

**PALM  
JEBEL ALI**

VILLA

A Z U R E  
B L U E

THE BEACH COLLECTION

**NAKHEEL**

NAKHEEL'S DESIGN VISION

“ WE ARE BUILDING A NEW REALITY  
FOR OUR PEOPLE, A NEW FUTURE  
FOR OUR CHILDREN, AND A NEW  
MODEL OF DEVELOPMENT. ”

H.H Sheikh Mohammed bin Rashid Al Maktoum  
UAE VICE-PRESIDENT, PRIME MINISTER, AND RULER OF DUBAI

Cities, as dreams, are built by desires.

Nakheel is a world-leading master developer, delivering award-winning projects united by the same endless pursuit of perfection. Nakheel creates new worlds to build a new happiness: not a passing and evanescent happiness, but something to leave behind, something that will inspire those who come after us. The pursuit of perfection and happiness is a real journey, culminating in the realisation of Palm Jebel Ali: a pinnacle of engineering, design excellence and Dubai living. This project is unlike any other; it symbolises a journey not just of a company, but of a nation.

A journey that will involve men, women, and families: all will desire to experience the wonder of colour, the music of emotion, the excellence of shape, and the

harmony of nature – the unprecedented and exclusive world of Palm Jebel Ali.

In bringing together leading designers with a variety of influences and experiences, two magnificent collections of distinctive villas have been created. With inspiration ranging from vernacular architecture to the sunlit coastal setting to ultra-luxurious materials, this combination of creative minds has ensured that each villa that lines the fronds of Palm Jebel Ali will have a truly unique style and character. Each home will offer an unrivalled living experience to its residents.

This is your home. This is Palm Jebel Ali.

Index

1. A CURATED COLLECTION

THE  
BEACH VILLAS

Serenity By The Sea

In a beach villa, a happy tomorrow arrives every day, every single dawn.

|                                  |   |       |
|----------------------------------|---|-------|
| Beachfront living at its finest  | — | P. 6  |
| An iconic neighbourhood          | — | P. 15 |
| Introducing the Beach Collection | — | P. 20 |

2. LIVE IN THE MASTERPIECE

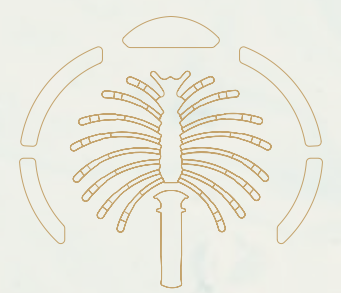
OWN A PIECE  
OF HISTORY

|                      |   |       |
|----------------------|---|-------|
| The Beach Collection | — | P. 28 |
| Villa Azure Blue     | — | P. 34 |

A CURATED COLLECTION

THE  
BEACH  
VILLAS

1



Serenity By The Sea

Beachfront living at its finest  
An iconic neighbourhood  
Introducing the Beach Collection

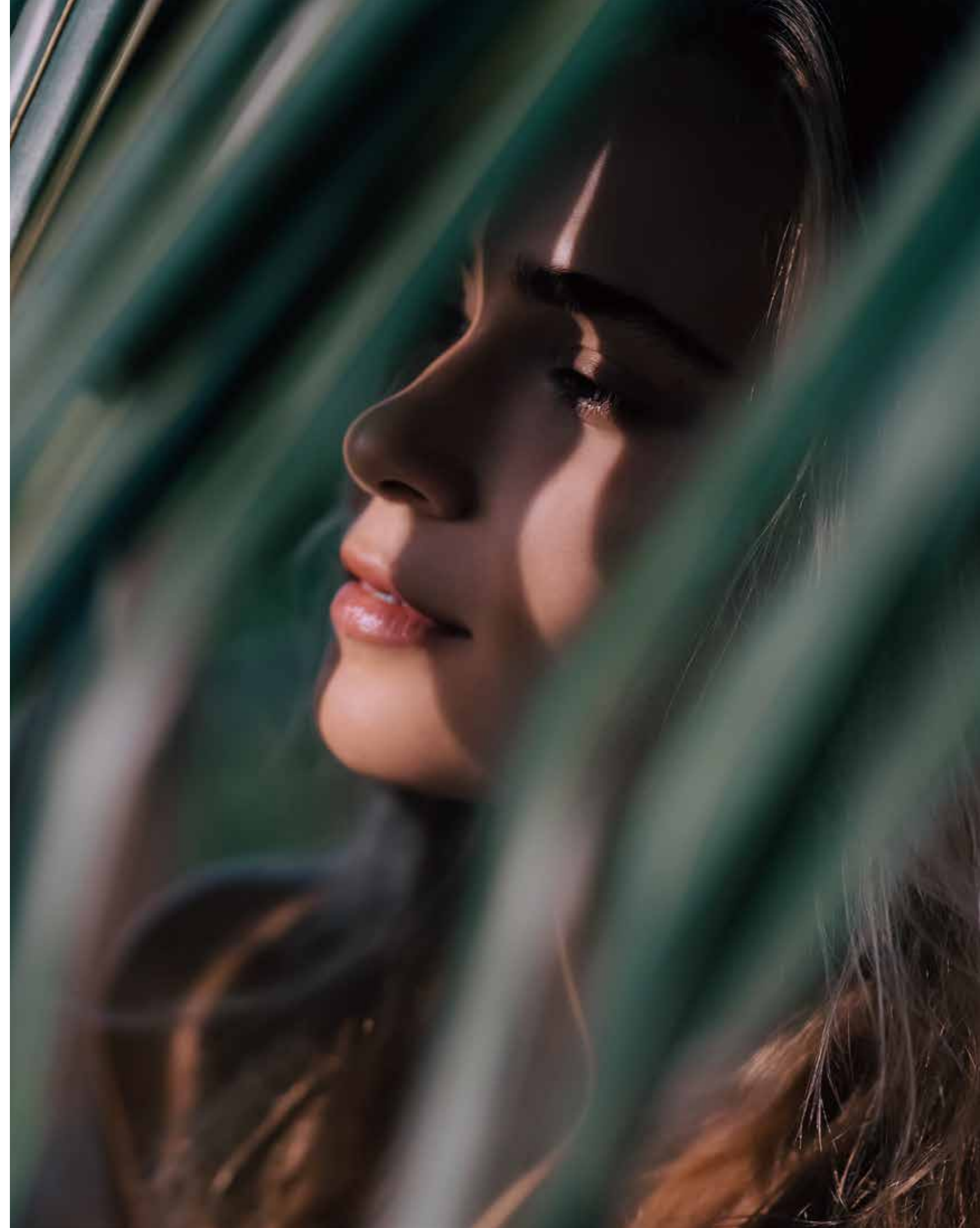
- P.6
- P.15
- P.20

— BEACHFRONT LIVING AT ITS FINEST

# SUN, SEA, SAND, & SOPHISTICATION

EDEN HAS A NEW ADDRESS.

Welcome to Palm Jebel Ali, a world-class lifestyle destination meticulously designed and impeccably curated, providing unrivalled luxury living to its residents.

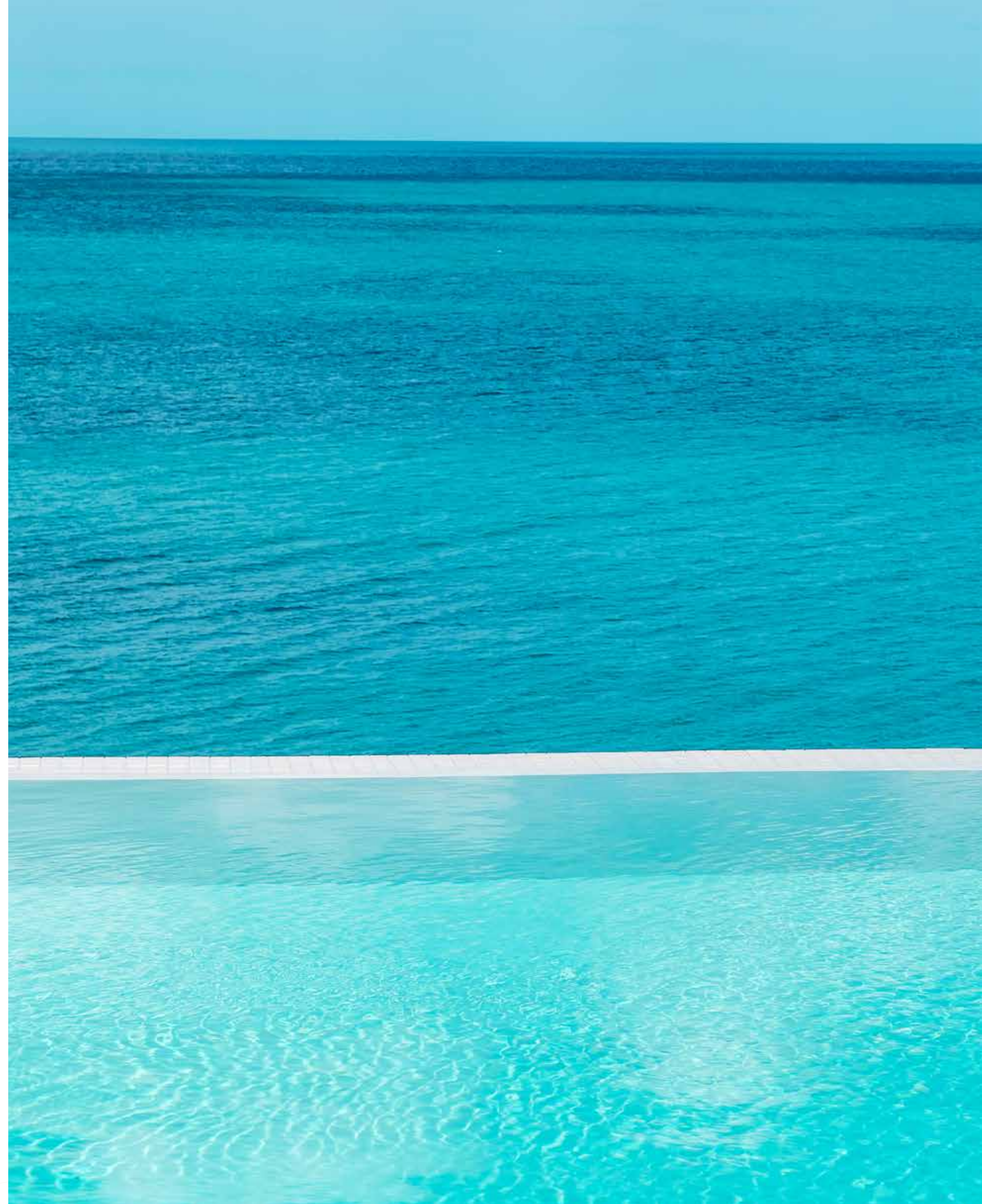


Live a life of **serenity and comfort** in Dubai's most coveted district, a true kaleidoscope born out of colourful greenery, azure waters, and pristine white sands.

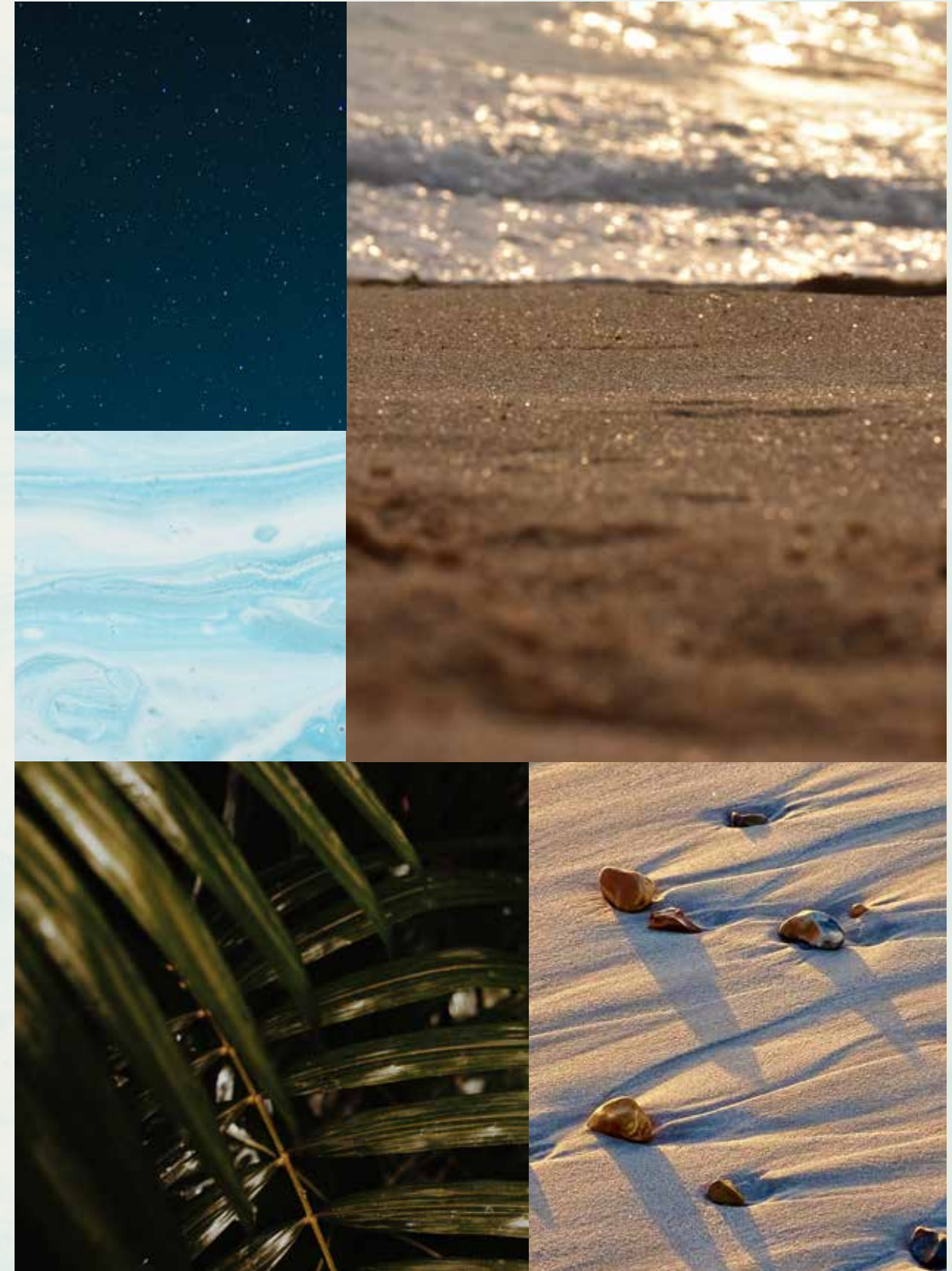
**LIVE IN HARMONY WITH NATURE, BETWEEN THE CITY AND THE SKY.**

Palm Jebel Ali rises from the sea to form a perfect paradisiacal archipelago. This masterpiece of luxury living offers a unique perspective on Dubai's skyline from a haven of tranquillity to boasting the longest coastline of any destination in Dubai. Palm Jebel Ali is located minutes away from the energy of the city, with excellent connectivity via Sheikh Zayed Road (E11) to other Dubai destinations or to Abu Dhabi. Palm Jebel Ali will be the feature destination of Dubai's rapidly developing southern urban centre. Spectacular properties and five-star amenities are skilfully woven together to create a highly desirable residential destination.





THE  
FRONDS  
BEACH COLLECTION







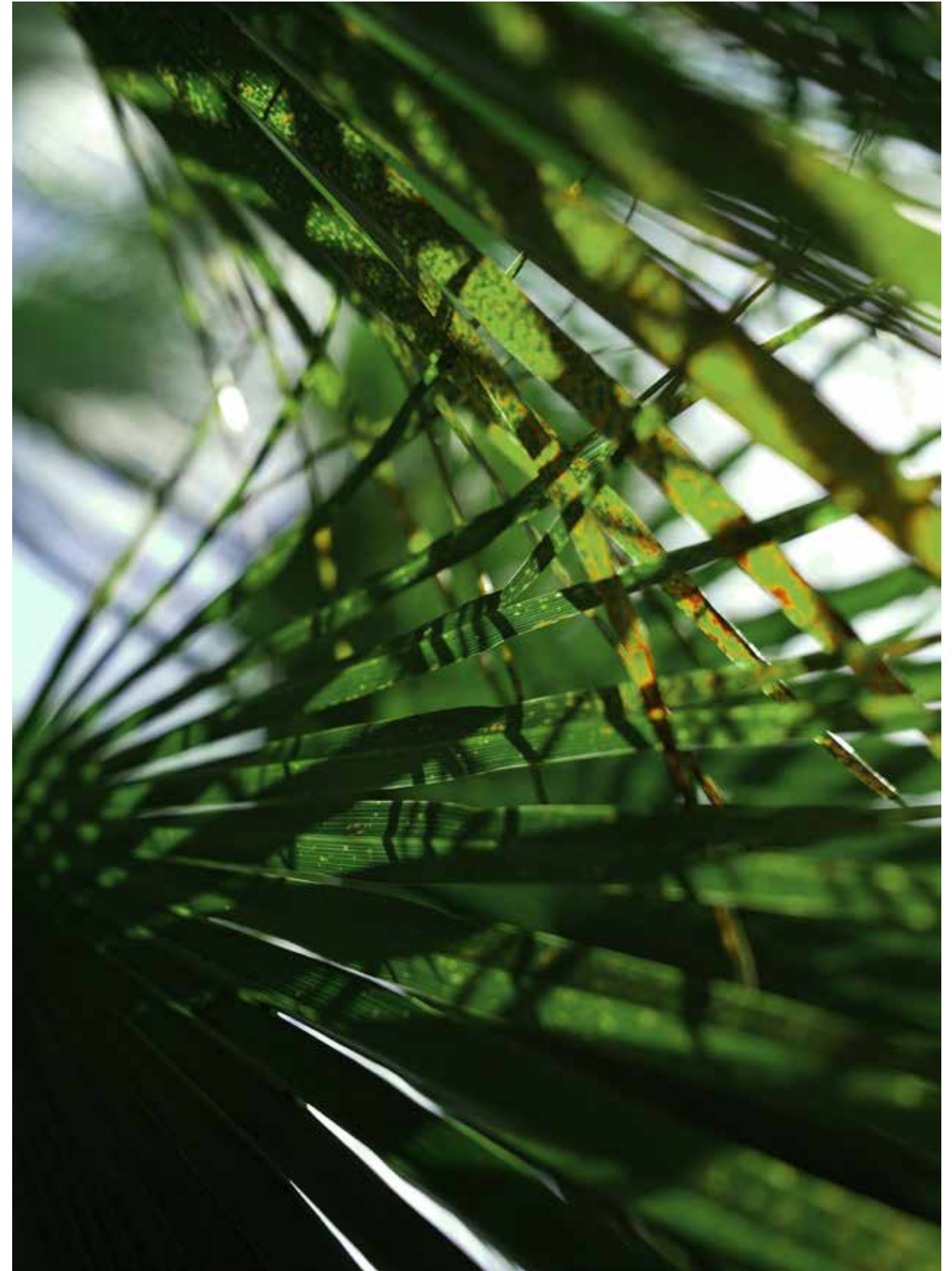
— FLOURISHING GREEN FRONDS

## AN ICONIC NEIGHBOURHOOD

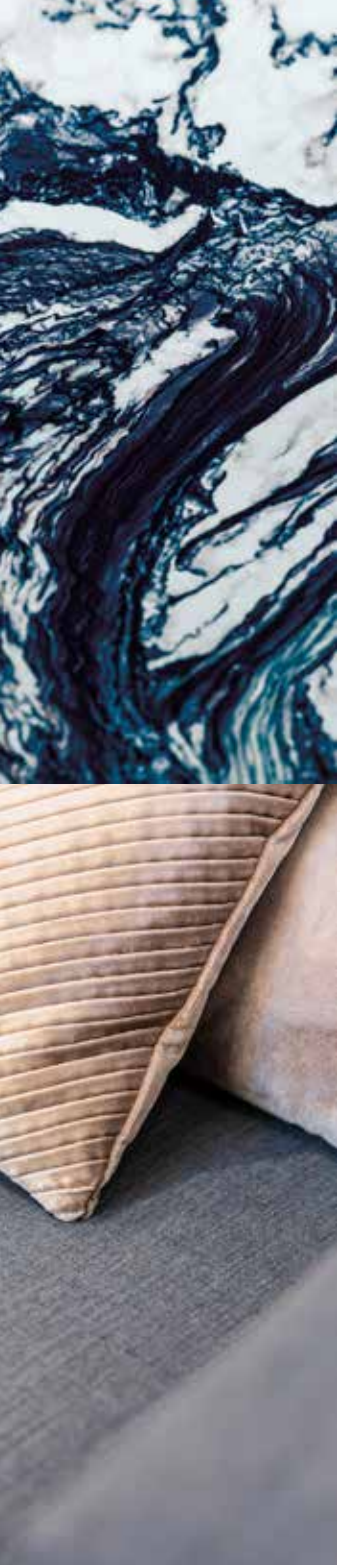
ARTFULLY DESIGNED, PRIVATE  
NEIGHBOURHOODS FOR SOPHISTICATED  
CITY LIVING.

Each exclusive frond forms its own thoughtfully planned private neighbourhood. Discover elegant streets painted in varying shades of green. Lush, layered flora merges with carefully curated foliage to create a perfectly harmonious residential landscape directly on the beachfront.

The frond community focuses on offering an active lifestyle, with wide walkable streets allowing pedestrians and bikers to access the beach through pocketed parks. The frond streetscape offers an intensely lush and fragrant landscape providing adequate shade coverage, with designated tree corridors alternating with street lighting and an additional layer of planting buffer to complete this idyllic verdant oasis.



Savour the refined, tropical atmosphere that surrounds you as you step out from your serene garden onto the sandy beach that lies at your doorstep. Enjoy the calming sounds of the waves and the openness of the sea for moments of pure relaxation.

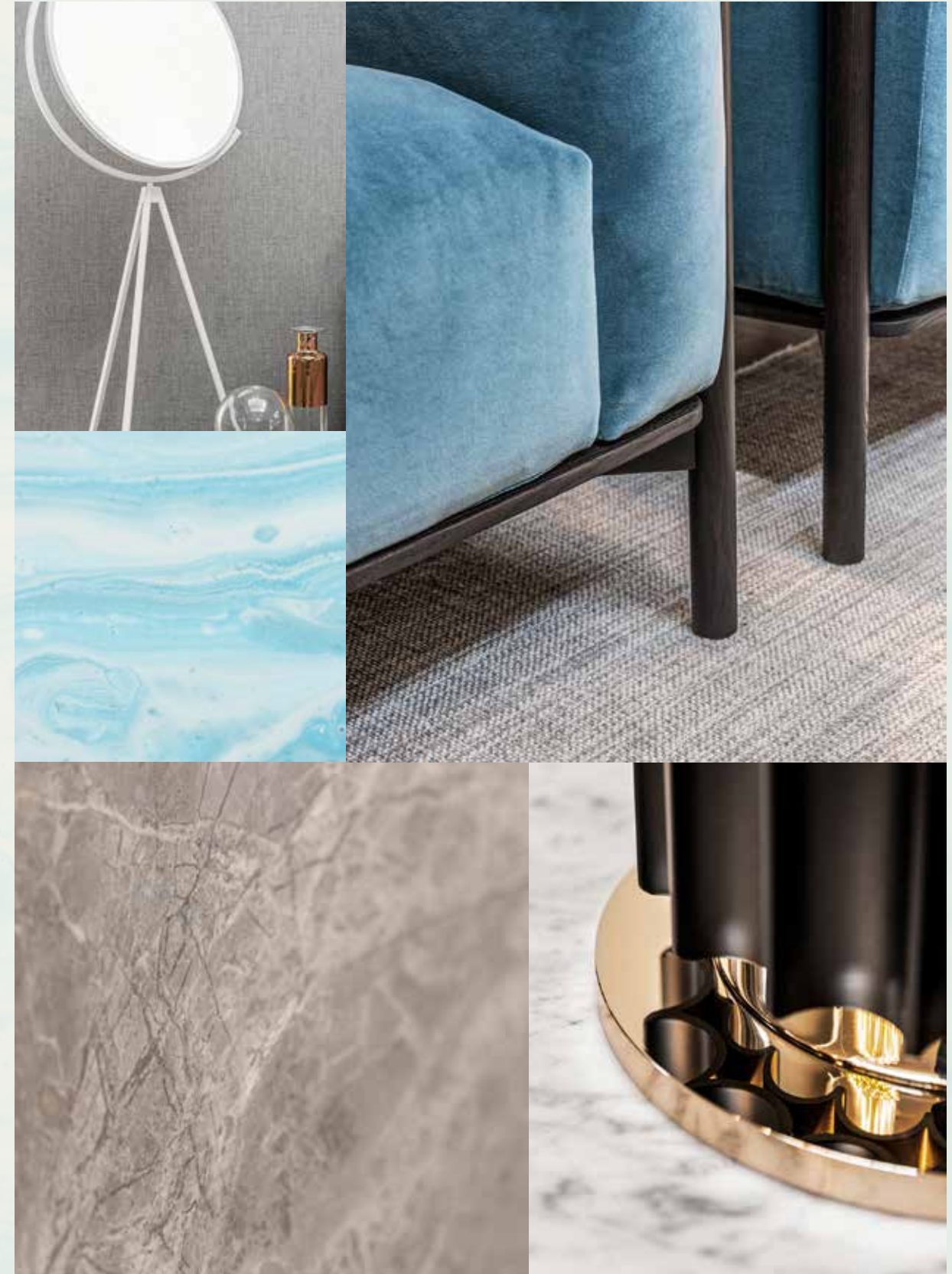


INTRODUCING THE BEACH COLLECTION

# CRAFTED WITH CARE

SOPHISTICATED STYLE AND PERFECT POISE.  
DISCOVER THE BLISSFUL [BEACH COLLECTION](#).

An inspired collection nestled in an idyllic setting.  
Relax as you listen to the sounds of calming water  
from the comfort of your enchanting beachfront  
terrace.



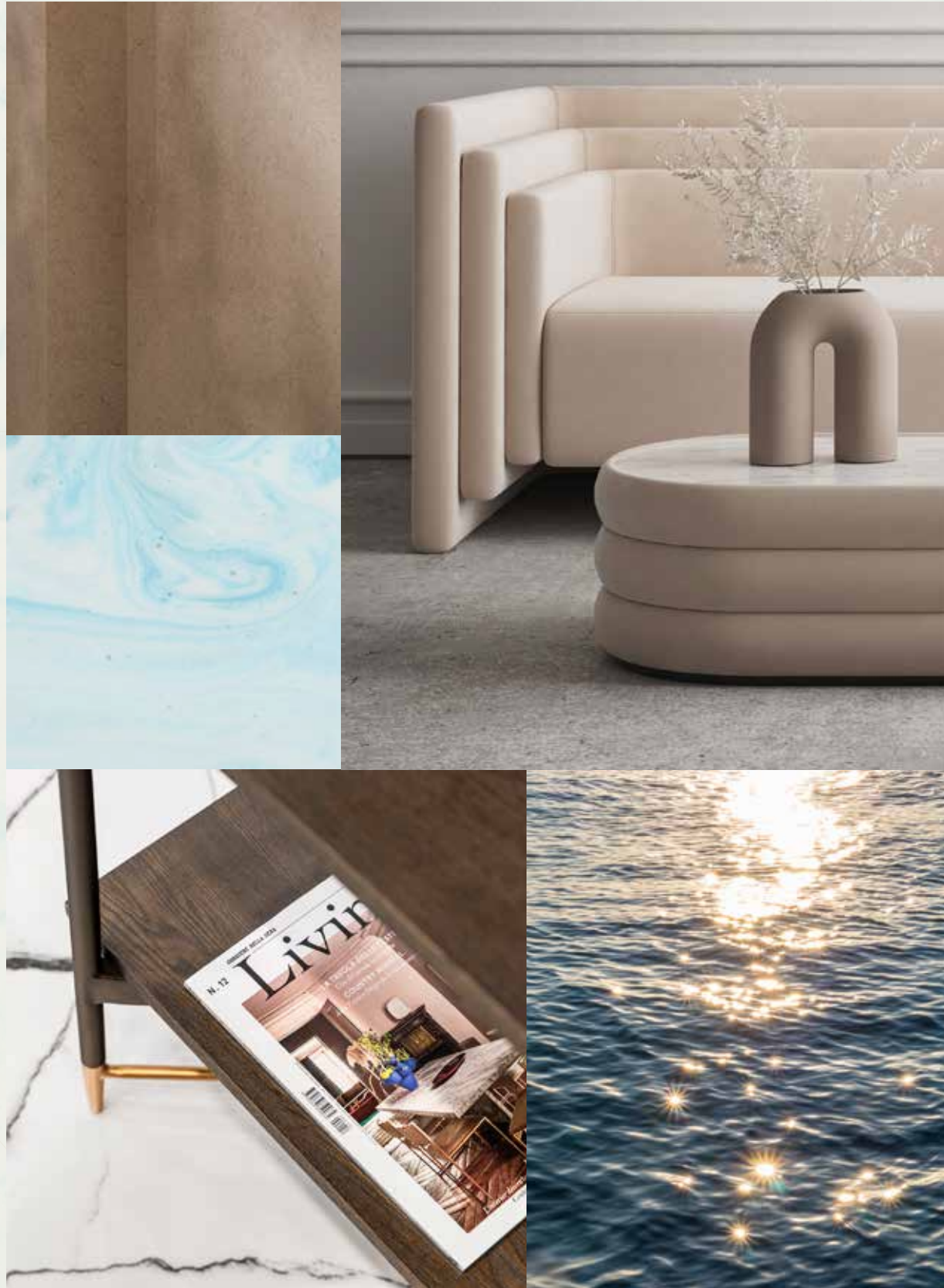
Exceptional design, a breathtaking beachfront location, and the tranquillity of an exclusive, private neighbourhood.

HOMES DESIGNED WITH **STYLISH FLAIR.**

The Beach Collection is for those who seek a home with a distinctly creative, contemporary design. Discover the wide range of unique architectural designs developed to accommodate a variety of lifestyles with thoughtful spacious layouts that ensure seamless indoor-outdoor living, designed to maximise views of the sea and integrate a feeling of outdoor and indoor harmony. Contemporary architecture achieves a timeless appeal. Villa finishes are unique to each villa, complementing its design and enhancing its key features.



EXCEPTIONAL DESIGN / LUXURIOUS BEACHSIDE ENVIRONMENT / BEACHFRONT LOCATION



LIVE IN A MASTERPIECE

OWN A PIECE OF

# HISTORY

2



Eight Unique Beach Villas

The Beach Collection  
Villa Azure Blue

— P.28  
— P.34

THE BEACH COLLECTION

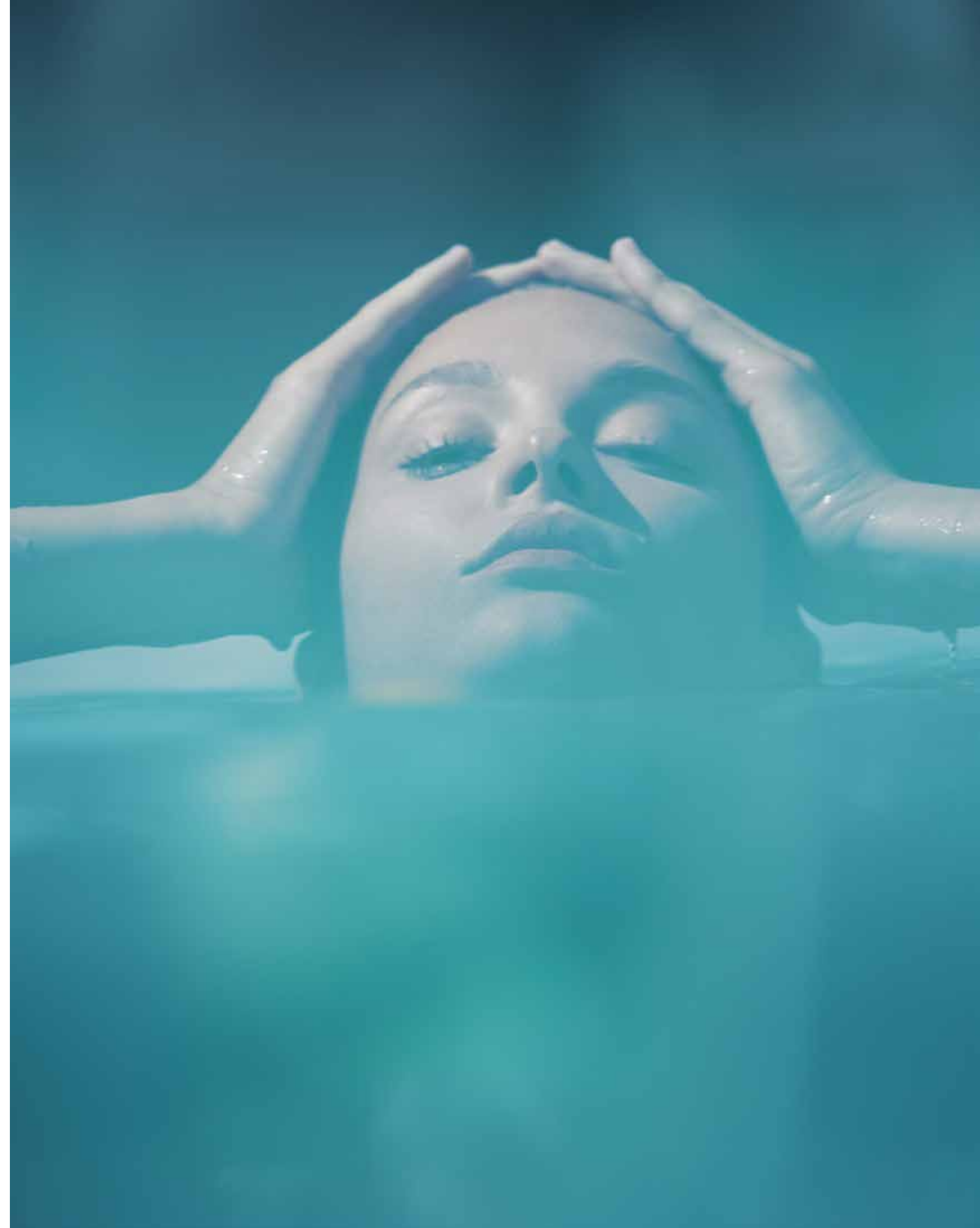
# WELCOMING WATERFRONT RESIDENCES

THE CONTEMPORARY **COMPOSITION** OF EACH STATEMENT VILLA HAS BEEN METICULOUSLY DESIGNED.

Imagine living an exclusive waterfront experience. Every day, every morning and every evening, watching and listening to the sea with its waves, its sinuous movements, its sparkling surface: the perfect blend, creating a harmonious landscape.

A gorgeous living space, up to six generous bedrooms with private ensuite bathrooms, lush greenery and colourful plants, the careful design of every detail, and – overall – the feeling of a continuous and open relationship between the indoors and outdoors.

In the Beach Villas, everyday life is a natural expression of harmony and perfection.

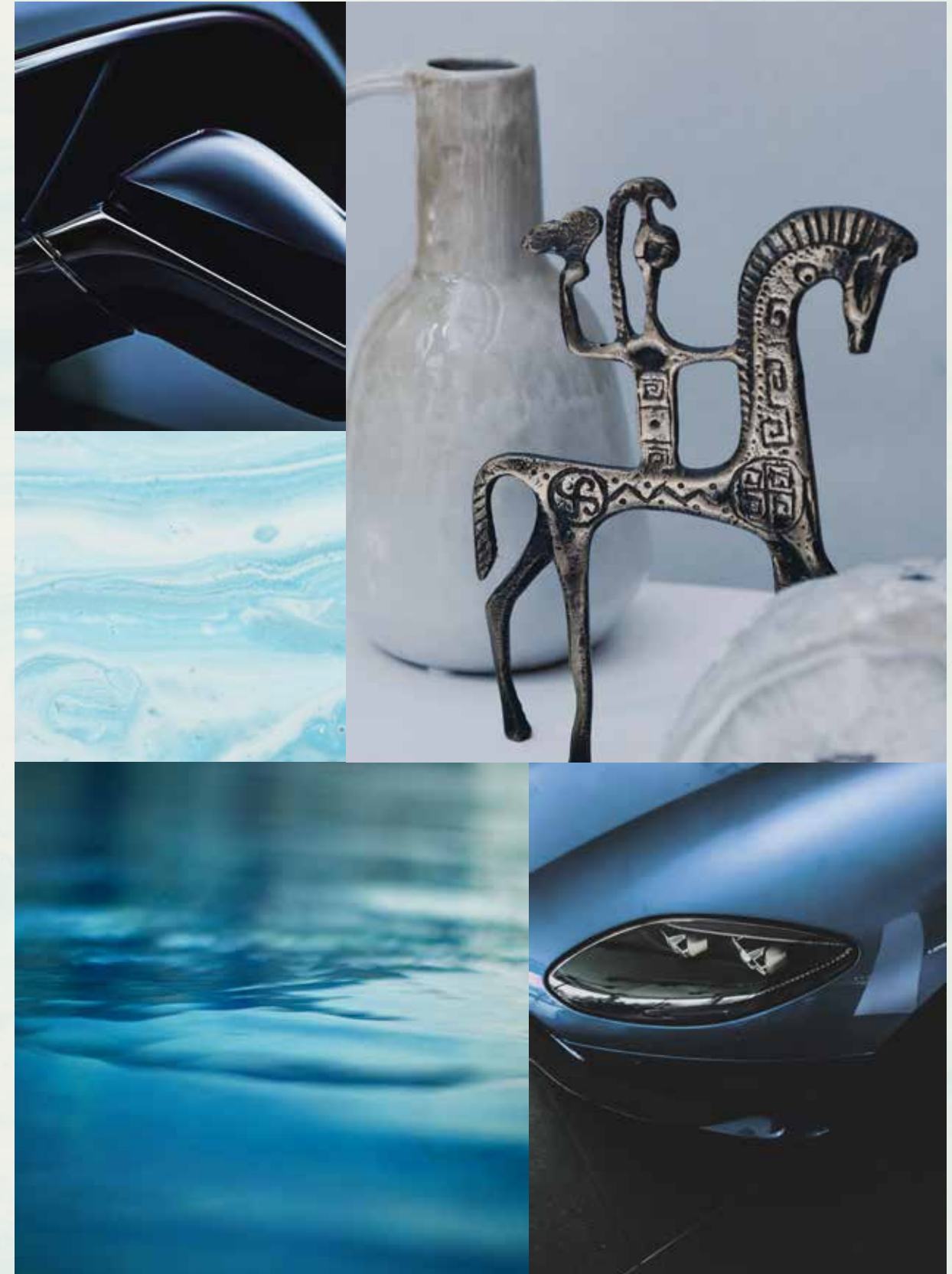




Located on the exclusive fronds, each residence enjoys **direct beach connectivity** in this serene, private neighbourhood.

TRUE LUXURY LIVING REFLECTS  
YOUR OWN DESIRES.

Choose an elegant home of the highest quality and enjoy an unrivalled lifestyle. Each villa will be unique and bespoke to realise individual needs and personal balance. We build happiness and prosperity for all our residents.





BEACH CONNECTIVITY / SERENE / PRIVATE

VILLA

# AZURE BLUE

Five-Bedroom Property

“We wanted to create a sophisticated, minimalistic and timeless home. The architectural details, layered textures and feature marbles have helped achieve the level of exclusiveness needed for this project.”

LW DESIGN GROUP - ARCHITECT

## VILLA AZURE BLUE

### A LUXURIOUS BLANK CANVAS THAT GLISTENS IN THE SUN

THIS EXCLUSIVE SEAFRONT RESIDENCE  
SHINES LIKE THE BRILLIANT WATERS OF THE  
CÔTE D'AZUR.

In this grand home, you will feel as though you are living high on the hills above Monaco or St. Tropez, overlooking the glittering blue sea of the Côte d'Azur. Soak up the sophisticated and glamorous atmosphere of the Riviera from this resort-inspired, minimalist villa with breathtaking water views. Make your mark on this streamlined home, where you will have the opportunity to add your own creative flair.



“The layout is very functional and harmonic, and the indoor spaces merge with the outdoor in a seamless flow. The quality of living is particularly enhanced by the light and connection with nature, with an emphasis on water views from all primary rooms.”

LW DESIGN GROUP - ARCHITECT



The elegant and neutral colour palette, which continues throughout this luminous home, creates an effortlessly sophisticated, refined ambience.

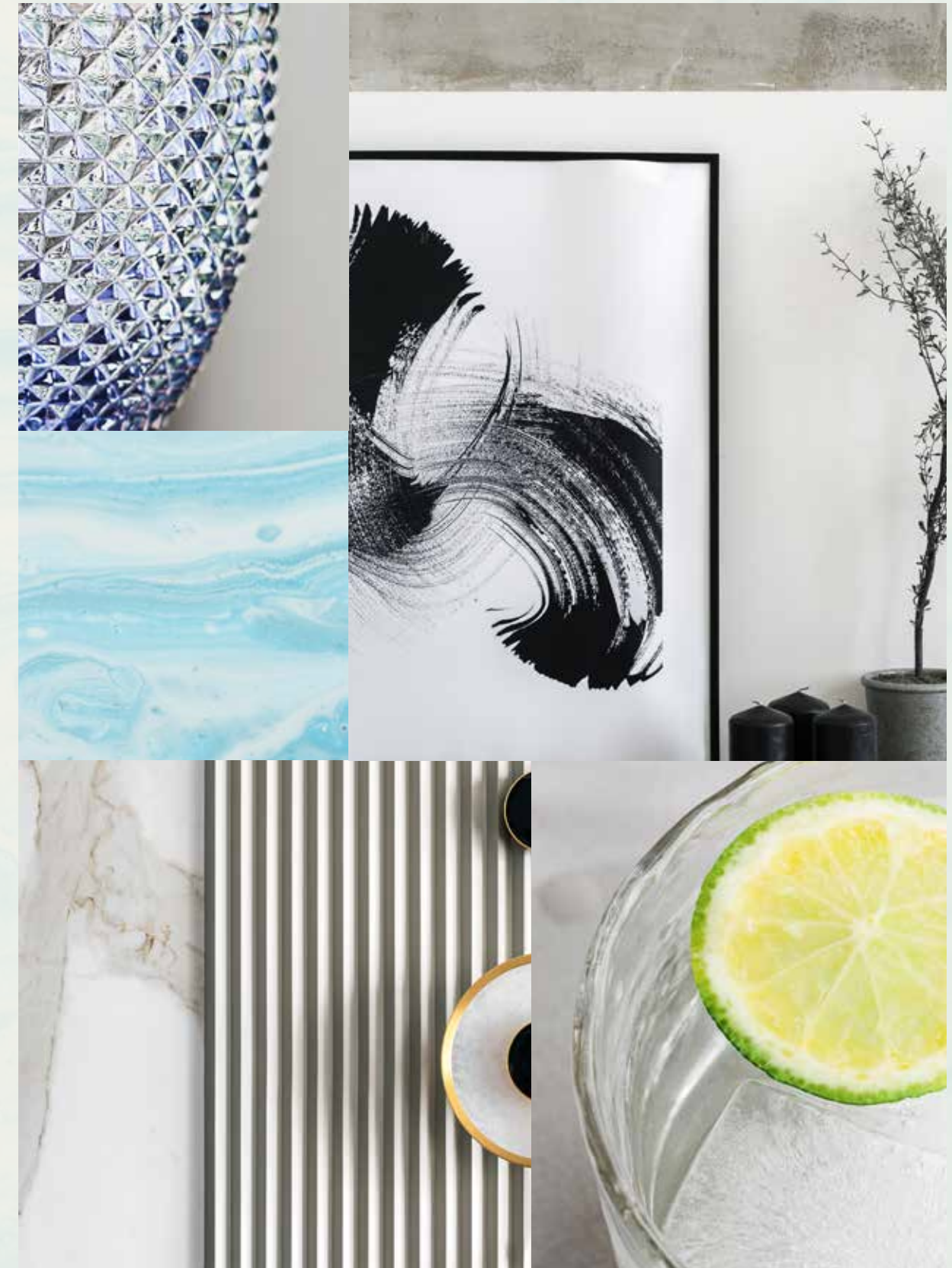


True **luxury** is the perfect balance of simplicity, creativity and high quality.

ARTISTRY AT ITS FINEST.

A life lived in this sublime villa is elevated to the next level. Sumptuous materials in muted tones decorate each room in a refined manner. Feel as though you are aboard a pristine yacht, sailing along the azure seas of the Riviera.

This is the ideal environment for adding your own personal touch, whether through vibrant pieces of fine art or delicate furniture.



Host a glamorous soiree with friends and family in this impeccable environment, where guests can move seamlessly between the flourishing garden and the lavish interiors. Sweeping water views paint the backdrop of every moment a breathtaking azure blue.



The flexibility offered by the open-plan space is ideal for contemporary living.

Each room is filled with an enhanced feeling of light and air.







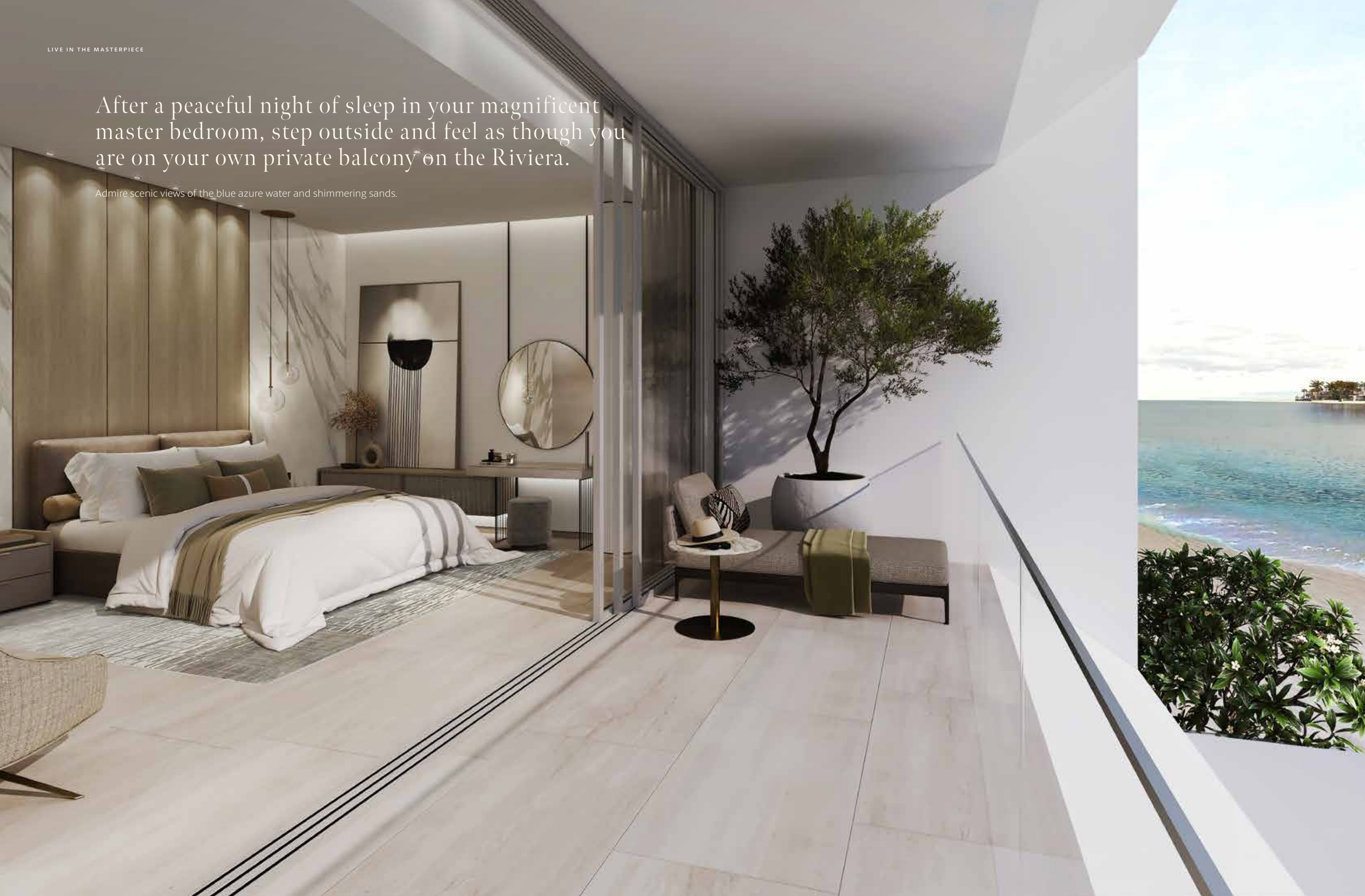
ENVISAGE SERENE EVENINGS SPENT WATCHING THE GLITTERING BLUE WAVES AS THEY DANCE IN THE DISTANCE OR COSY NIGHTS RELAXING BENEATH THE STARS. EACH MOMENT FEELS LIKE A PERFECT HOLIDAY IN THIS BEAUTIFUL BEACHFRONT RESIDENCE.

The captivating statement staircase, located at the heart of this home, becomes a gallery space for your art collection. Choose to display a spectacular sculpture in this exquisite marble setting.



After a peaceful night of sleep in your magnificent master bedroom, step outside and feel as though you are on your own private balcony on the Riviera.

Admire scenic views of the blue azure water and shimmering sands.





Enjoy a chic, luxurious **lifestyle** in this fabulous seafront home with European design influence.

**STYLE & PANACHE.**

The elegance of this home cannot be overstated. It is made for those who enjoy classic luxury. Add your own touches to the immaculately decorated neutral spaces as your personal style takes centre stage.

Relax in this radiant environment where every moment is imbued with serenity, calm and a breathless sense of wonder.

This is your personal retreat. The lavishly detailed  
bathrooms offer you a spa-like experience.

Feel as though you are staying in a luxury hotel every day.





GROUND FLOOR

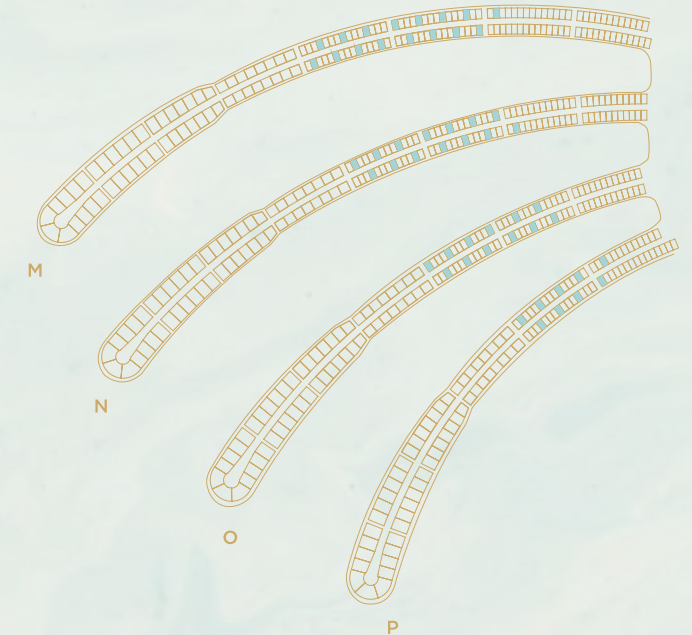


SECOND FLOOR



FIRST FLOOR

| FLOOR TYPE                       | SQ. M.        | SQ. FT.         |
|----------------------------------|---------------|-----------------|
| Ground Floor                     | 258.14        | 2,778.60        |
| Balcony / Terrace / Porch-GF     | 2.07          | 22.28           |
| First Floor Area                 | 246.67        | 2,655.13        |
| Balcony / Terrace - First Floor  | 39.94         | 429.91          |
| Second Floor Area                | 153.55        | 1,652.80        |
| Balcony / Terrace - Second Floor | 34.60         | 372.43          |
| Garage - Covered                 | 48.61         | 523.23          |
| <b>TOTAL BUILT-UP AREA</b>       | <b>783.58</b> | <b>8,434.38</b> |
| Garage with Pergola              | 0.0           | 0.0             |
| <b>TOTAL AREA</b>                | <b>783.58</b> | <b>8,434.38</b> |



Numbers, square footage and floor plans are approximate. Final dimensions, square footage and floor plans may vary and are subject to change without notice. The developer reserves the right to make revisions. Built-Up Area is measured in accordance with Dubai Land Department standards. Plans, artistic renderings, landscaping and images are for illustrative purposes only and are subject to change without notice. Landscape shown is indicative and not provided by the developer. Pool layout and configuration shown on floor plans are for general illustrative purposes only and are not provided by the developer. The Bespoke Edition Option offered to the buyer at additional price will include a standard pool offering.

INFO@NAKHEEL.COM  
800 NAKHEEL

THE BEACH COLLECTION

**PALM  
JEBEL ALI  
NAKHEEL**