

# CREEK VIEWS II









## WHERE THE PAST MEETS THE FUTURE

CREEK VIEWS FEATURES THE CITY'S REMARKABLE  
TRANSITION FROM TRADITIONAL VIEWS TO A  
CONTEMPRARY REINVENTED FUTURE.





CREEK VIEWS II







WHERE BOATS DRIFT ALONG THE  
BAY'S CALM WARM WATERS





LUXURY DEFINED BY A CAREFUL  
BALANCE OF CONNECTIVITY  
AND GENERAL AMBIANCE





NESTLED ON THE ICONIC DUBAI CREEK IN THE  
HEART OF HEALTHCARE CITY, TO WAKE YOU  
UP TO ALL THAT MATTERS.





SURROUND YOURSELF WITH  
PICTURE-PERFECT VIEWS







UNPRECEDENTED  
AMENITIES









OUTSTANDING ARRAY  
OF RETAIL











RISING UP 18 IMPRESSIVE STOREYS,  
CREEK VIEWS II IS THE NEW BENCHMARK  
FOR CONVENIENCE, PRACTICALITY,  
AND MODERNISM.







WITH 587 COMFORTABLE RESIDENTIAL UNITS, INCLUDING 116 STUDIOS, 436 ONE-BEDROOM APARTMENTS AND 35 TWO-BEDROOM APARTMENTS, CREEK VIEWS II IS ELEGANTLY DESIGNED WITH ULTRA-MODERN FINISHINGS AND SPECTACULAR, CONTEMPORARY INTERIOR ARTISTRY.



## LOCATION BENEFITS





1 DUBAI CREEK /  
AL KHAIL ROAD  
1 minute from Creek Views

2 DUBAI INT. AIRPORT  
9 minutes from Creek Views

3 WAFI MALL  
5 minutes from Creek Views

4 DOWNTOWN DUBAI / DUBAI MALL  
10 minutes from Creek Views

5 PALAZZO VERSACE HOTEL  
7 minutes from Creek Views

6 SHEIKH ZAYED ROAD  
5 minutes from Creek Views

7 AL JADDAF WATERFRONT  
8 minutes from Creek Views

8 DUBAI HEALTHCARE CITY /  
METRO STATION  
3 minutes from Creek Views

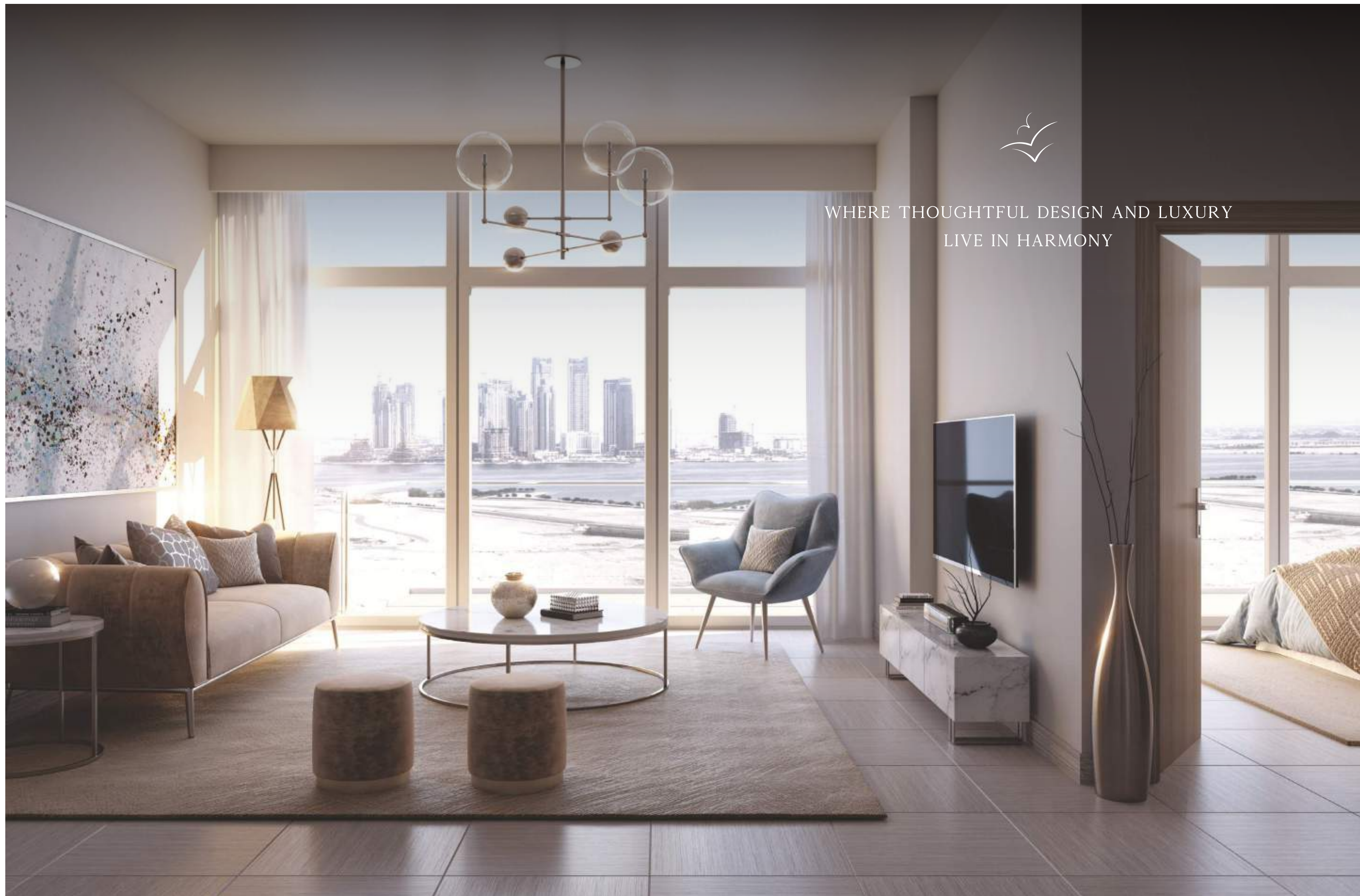
9 BUSINESS BAY / DIFC  
10 minutes from Creek Views

10 FESTIVAL CITY / IKEA  
8 minutes from Creek Views

11 BLUEWATERS  
23 minutes from Creek Views







WHERE THOUGHTFUL DESIGN AND LUXURY  
LIVE IN HARMONY

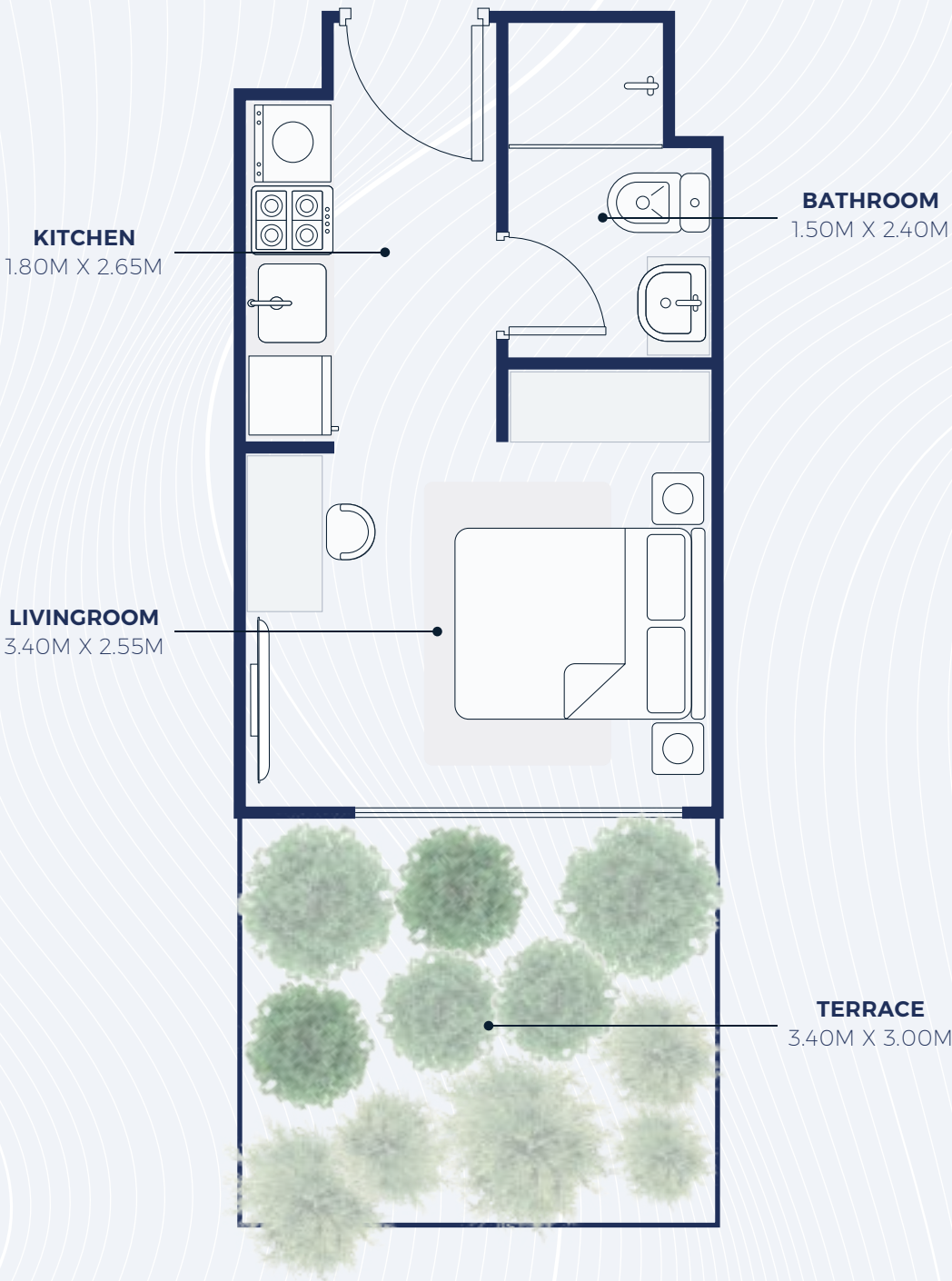






FLOORPLAN

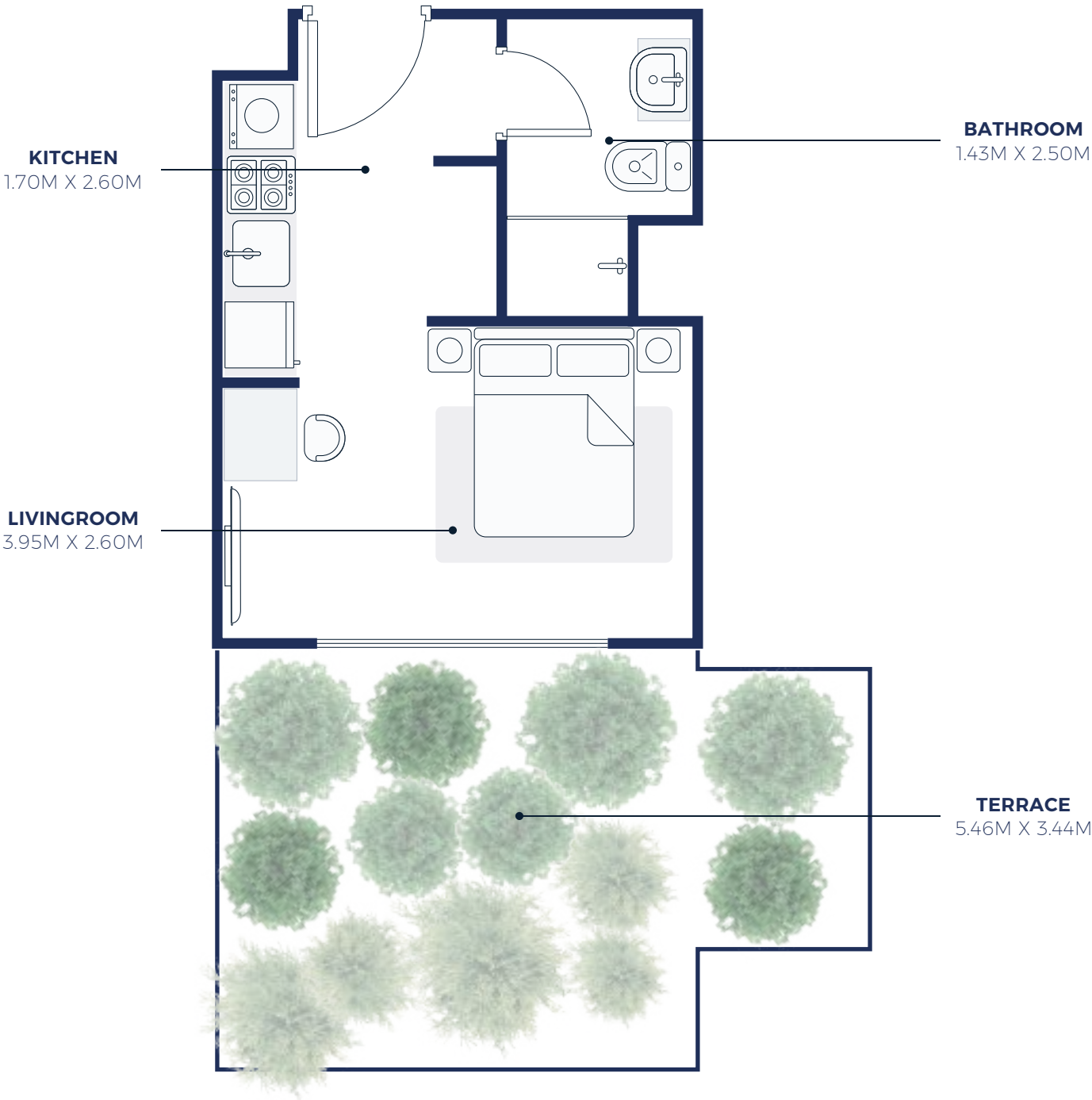
STD 1A (1st FLOOR)



SUIT AREA: 224.85 SQ.FT  
TOTAL AREA: 341.96 SQ.FT

FLOORPLAN

STD 2A (1st FLOOR)



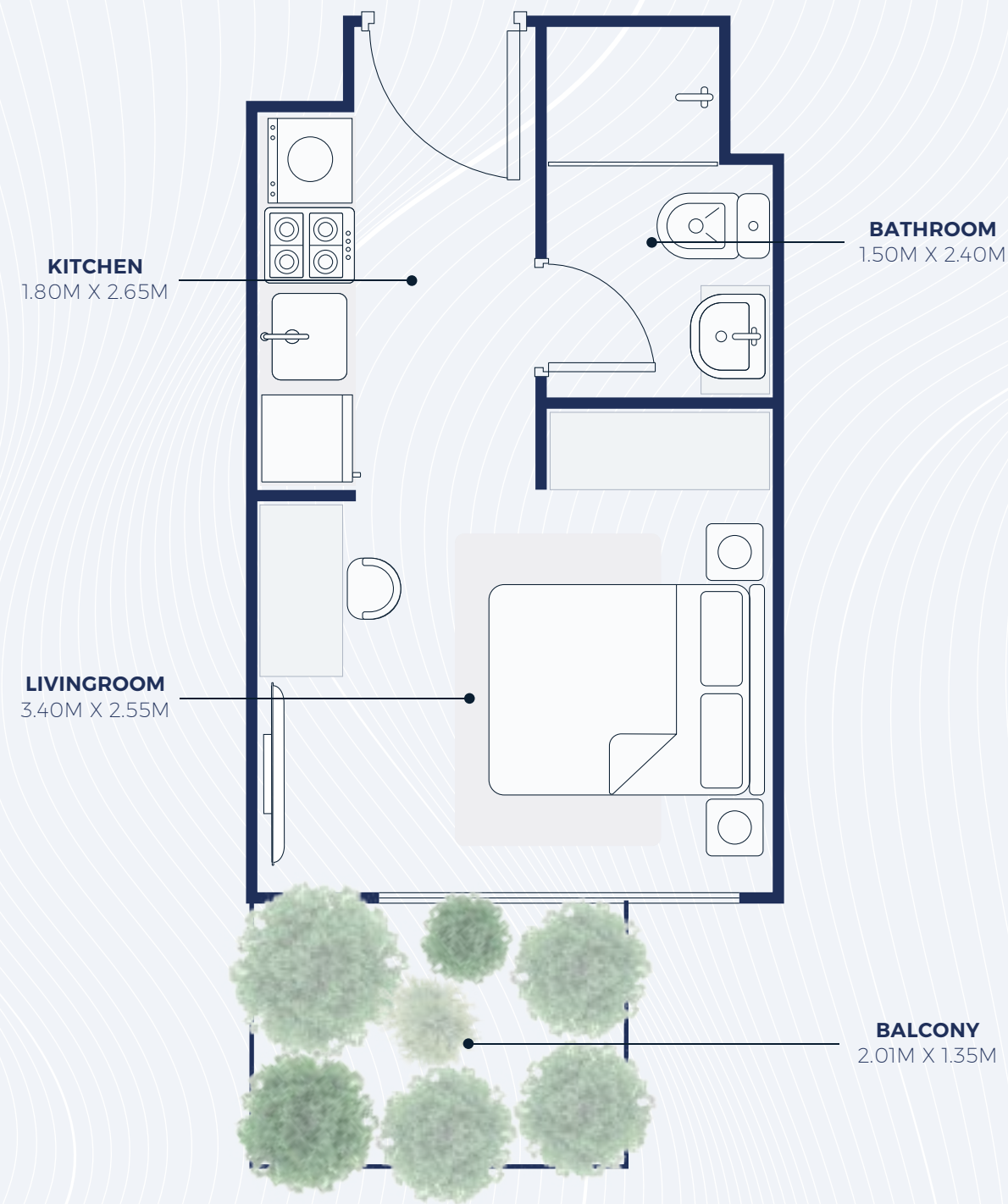
SUIT AREA: 239.92 SQ.FT  
TOTAL AREA: 436.58 SQ.FT





FLOORPLAN

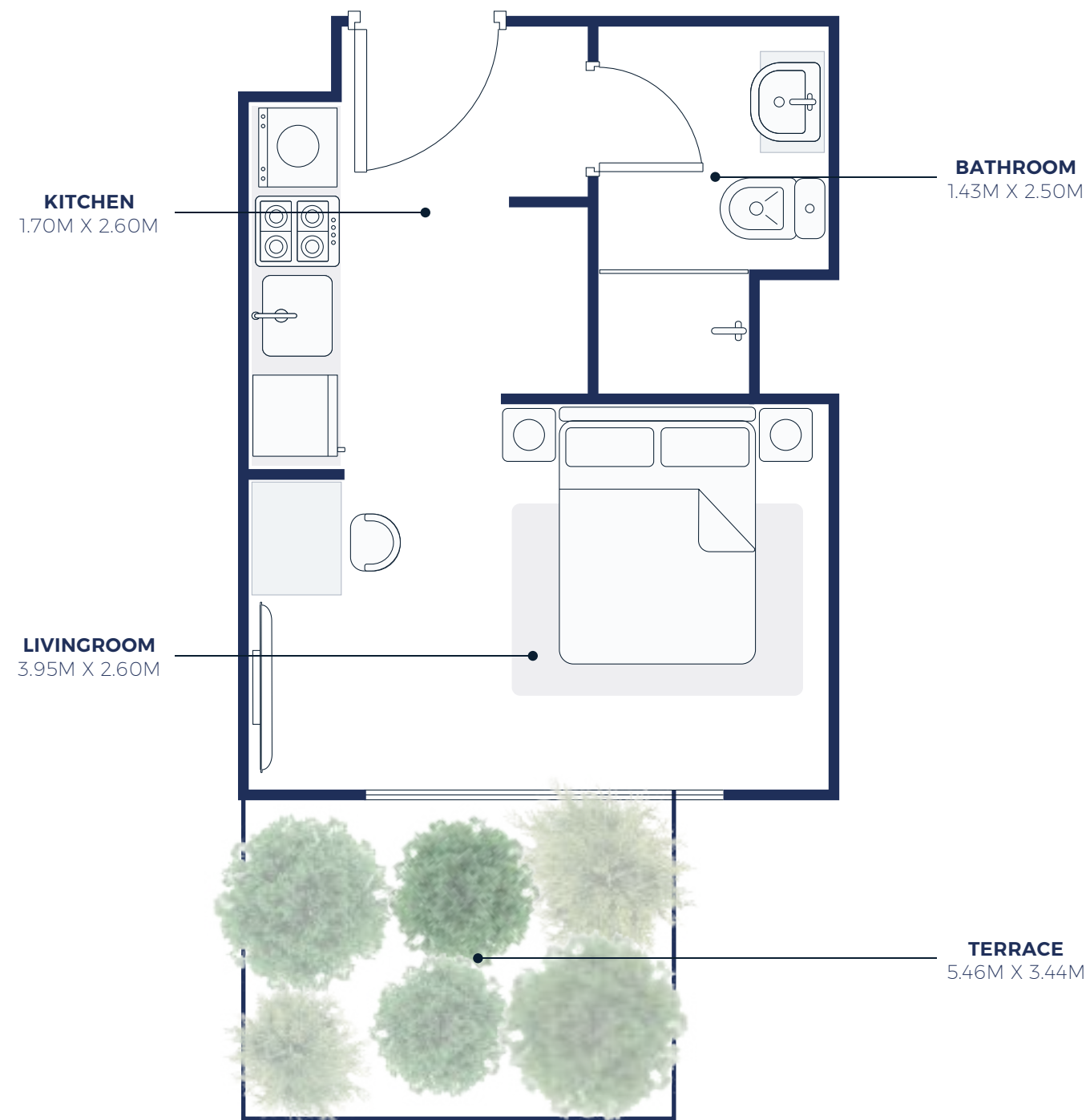
**STD 1B** (2nd to 18th Floor)



SUIT AREA: 224.31 SQ.FT  
TOTAL AREA: 256.50 SQ.FT

FLOORPLAN

**STD 2B** (2nd to 4th, 7th to 14th, 17th, 18th Floor)



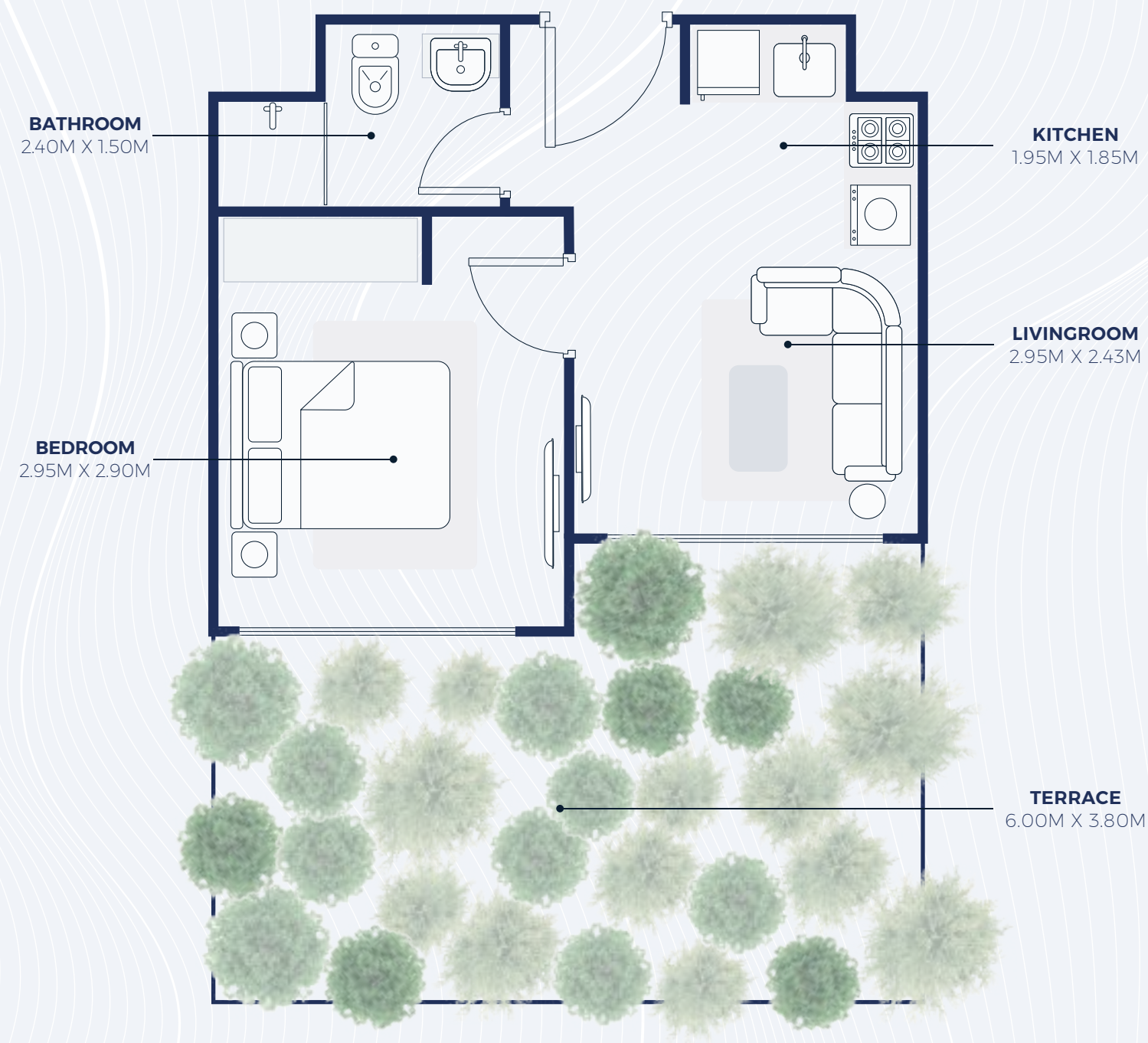
SUIT AREA: 239.81 SQ.FT  
TOTAL AREA: 274.47 SQ.FT





FLOORPLAN

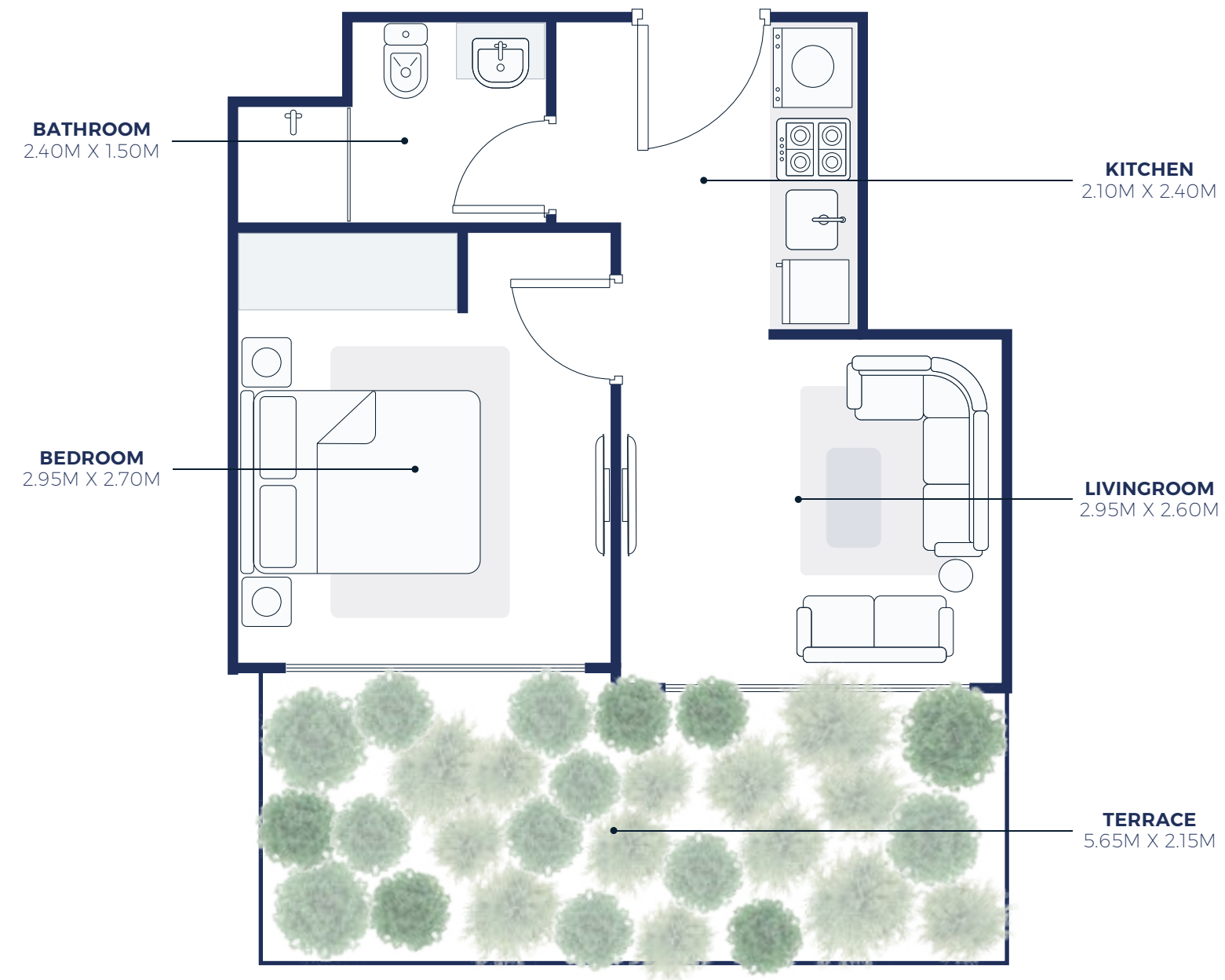
1BR 1A (1st FLOOR)



SUIT AREA: 324.10 SQ.FT  
TOTAL AREA: 550.57 SQ.FT

FLOORPLAN

1BR 2A (1st FLOOR)



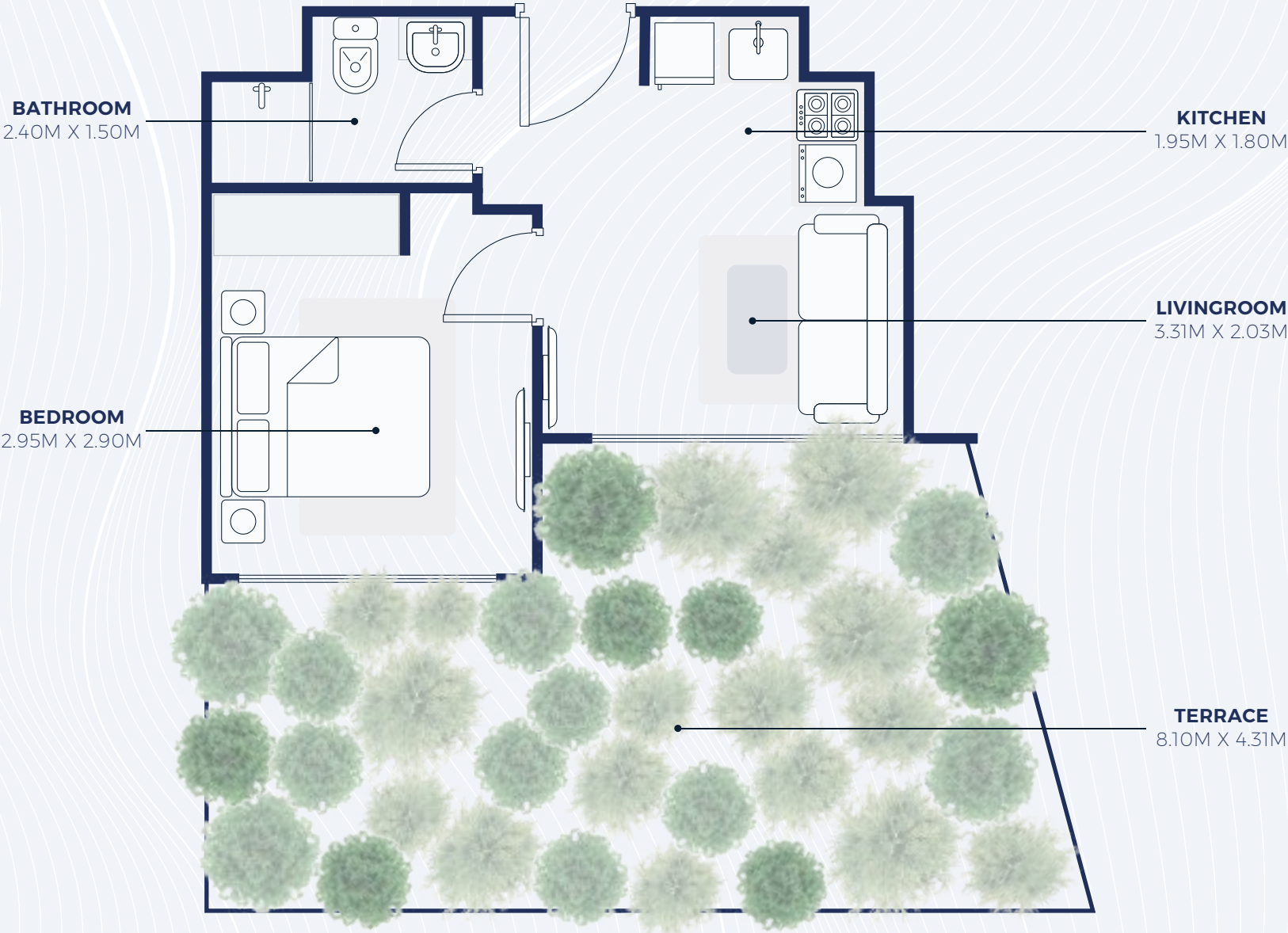
SUIT AREA: 317.31 SQ.FT  
TOTAL AREA: 447.56 SQ.FT





FLOORPLAN

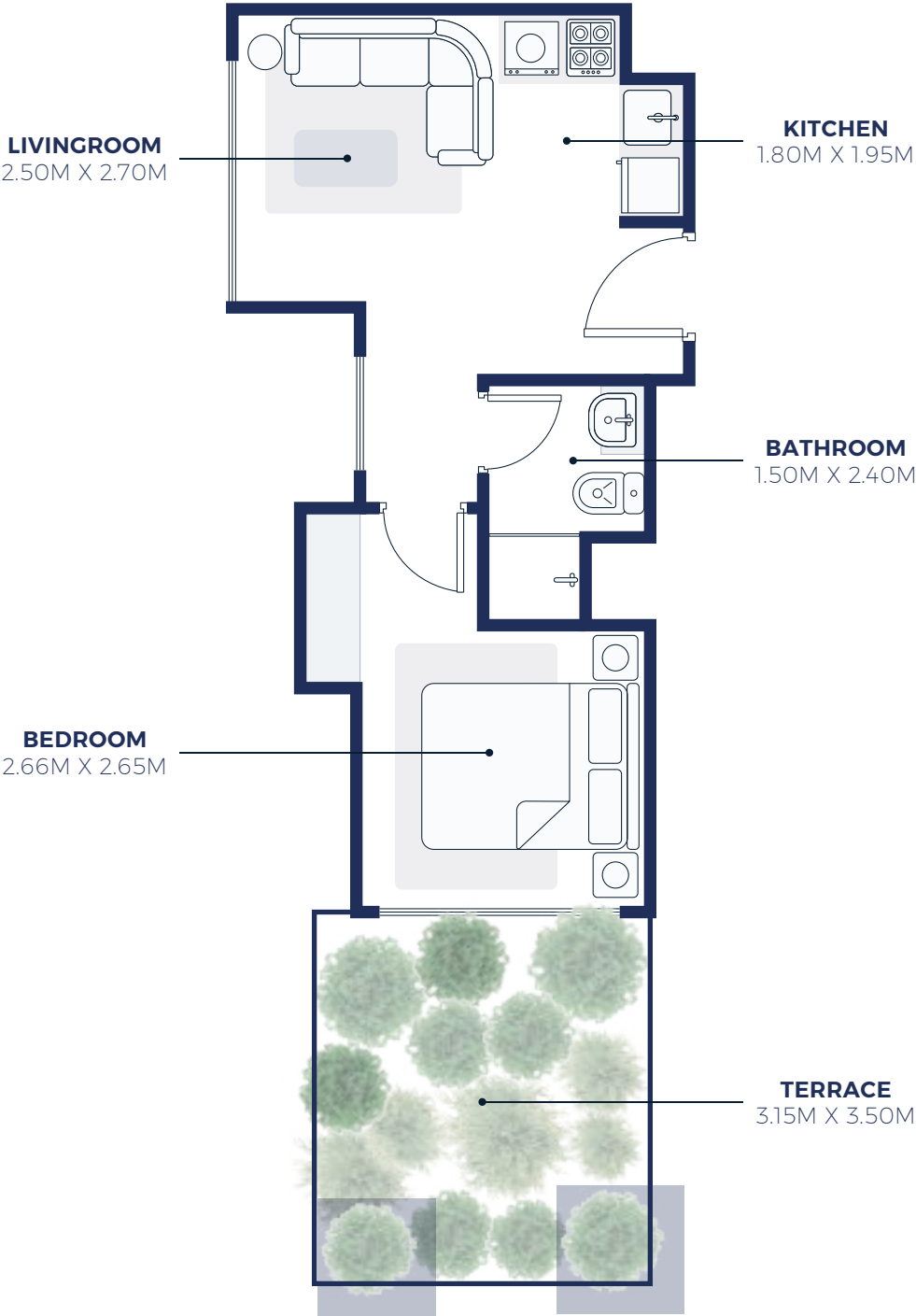
1BR 3A (1st FLOOR)



SUIT AREA: 315.16 SQ.FT  
TOTAL AREA: 632.37 SQ.FT

FLOORPLAN

1BR 4A (1st FLOOR)



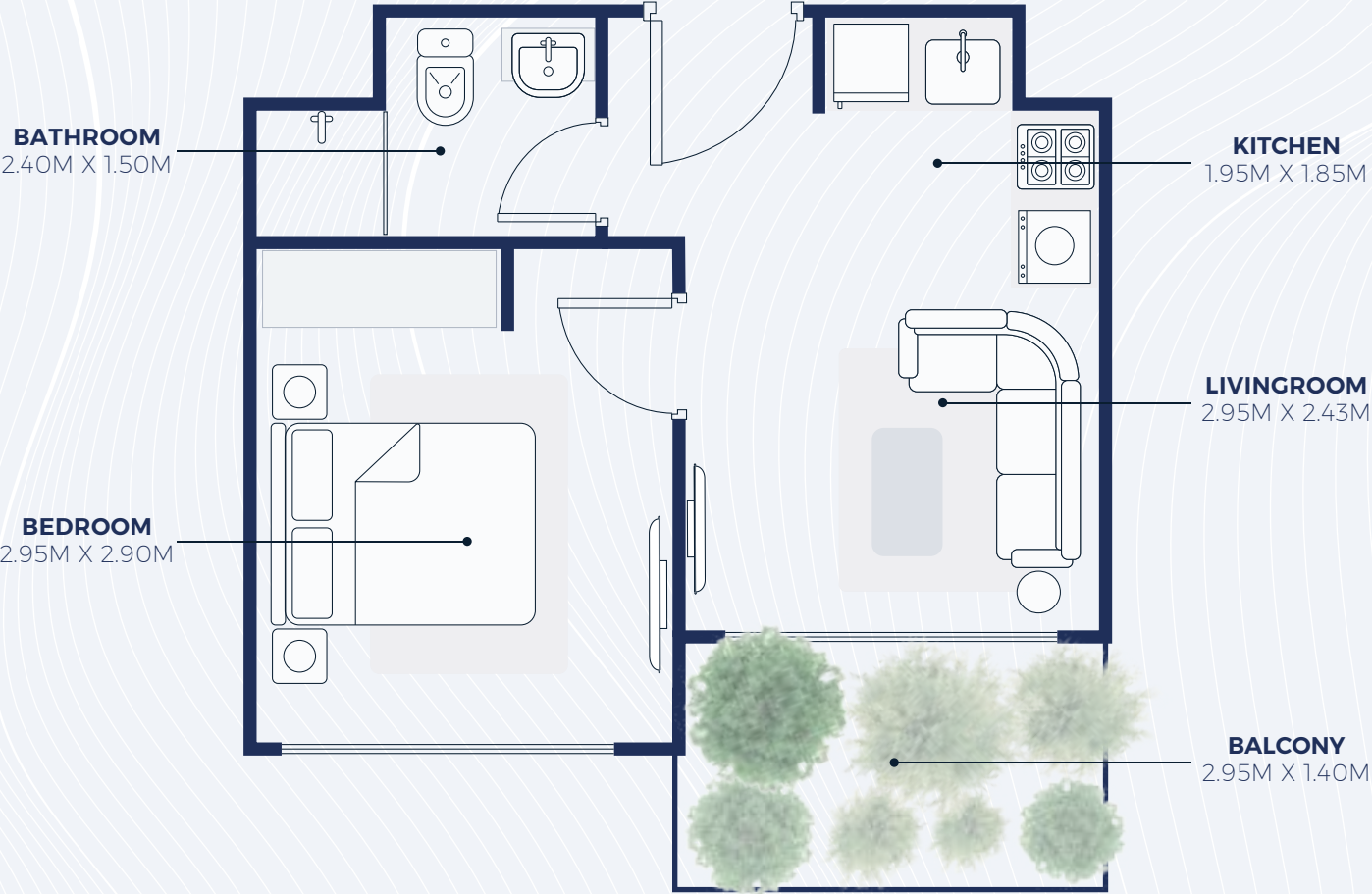
SUIT AREA: 345.62 SQ.FT  
TOTAL AREA: 468.66 SQ.FT





FLOORPLAN

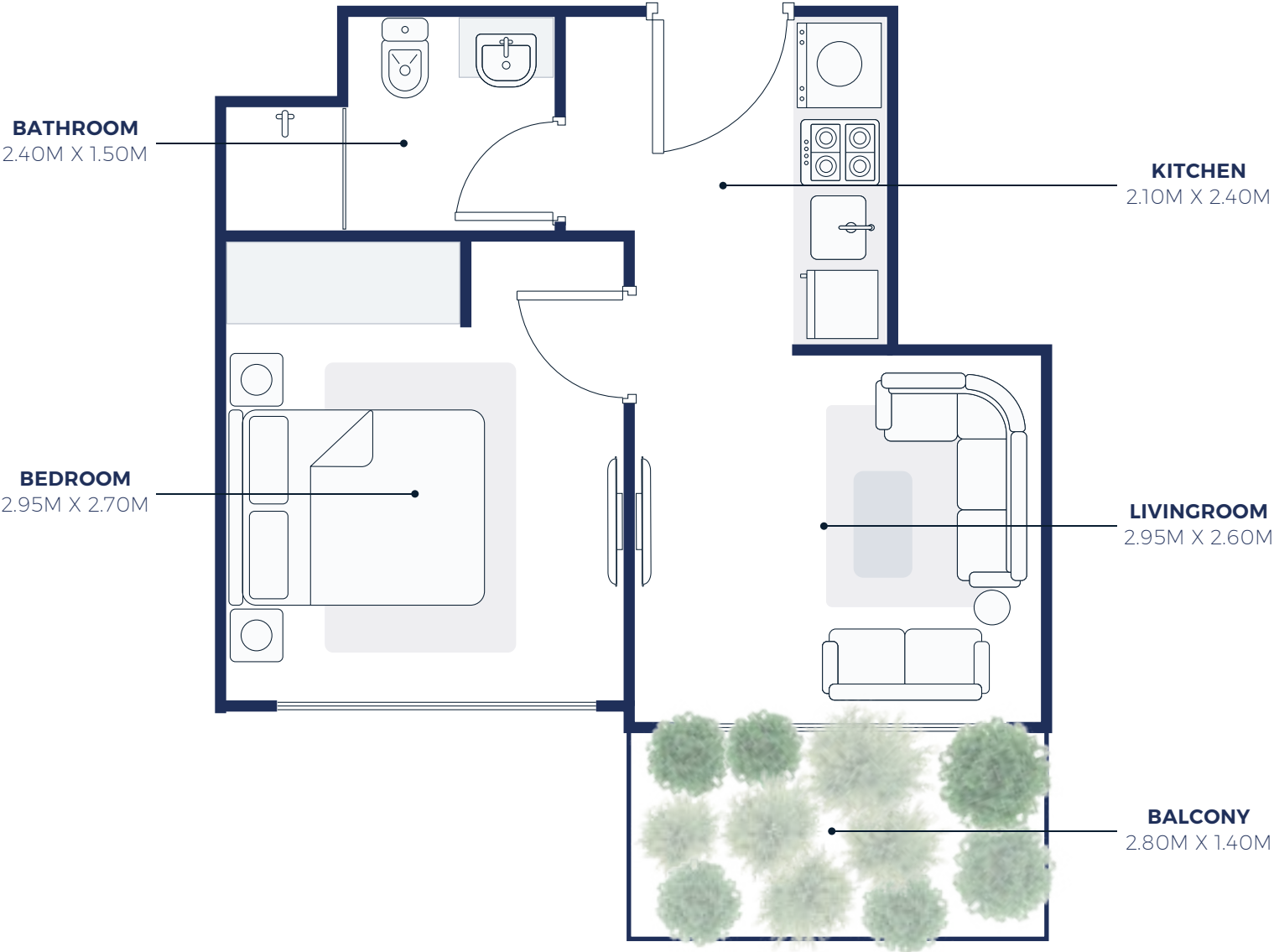
**1BR 1B** (2nd to 18th Floor)



SUIT AREA: 324.10 SQ.FT  
TOTAL AREA: 370.92 SQ.FT

FLOORPLAN

**1BR 2B** (2nd to 18th Floor)



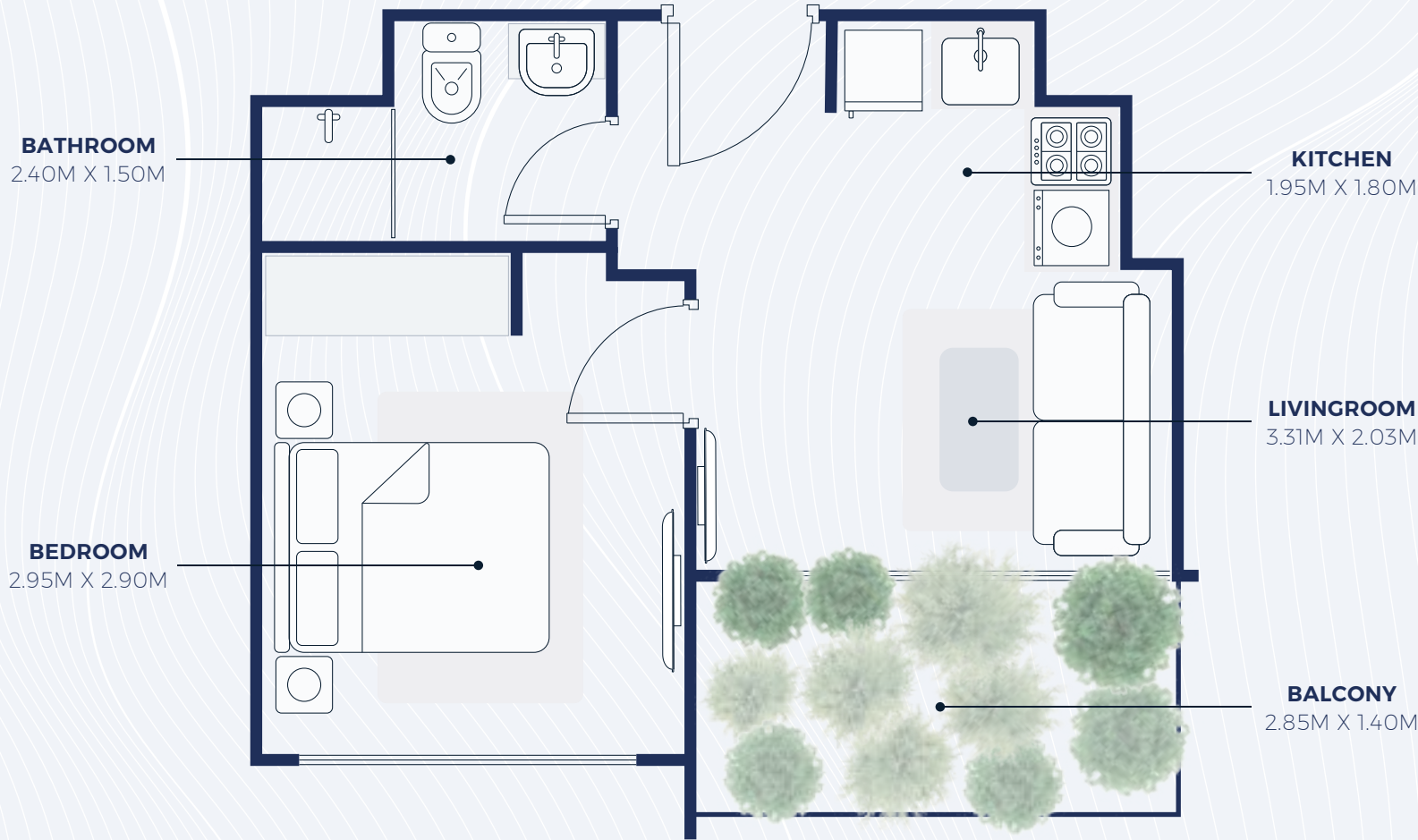
SUIT AREA: 316.78 SQ.FT  
TOTAL AREA: 360.91 SQ.FT





FLOORPLAN

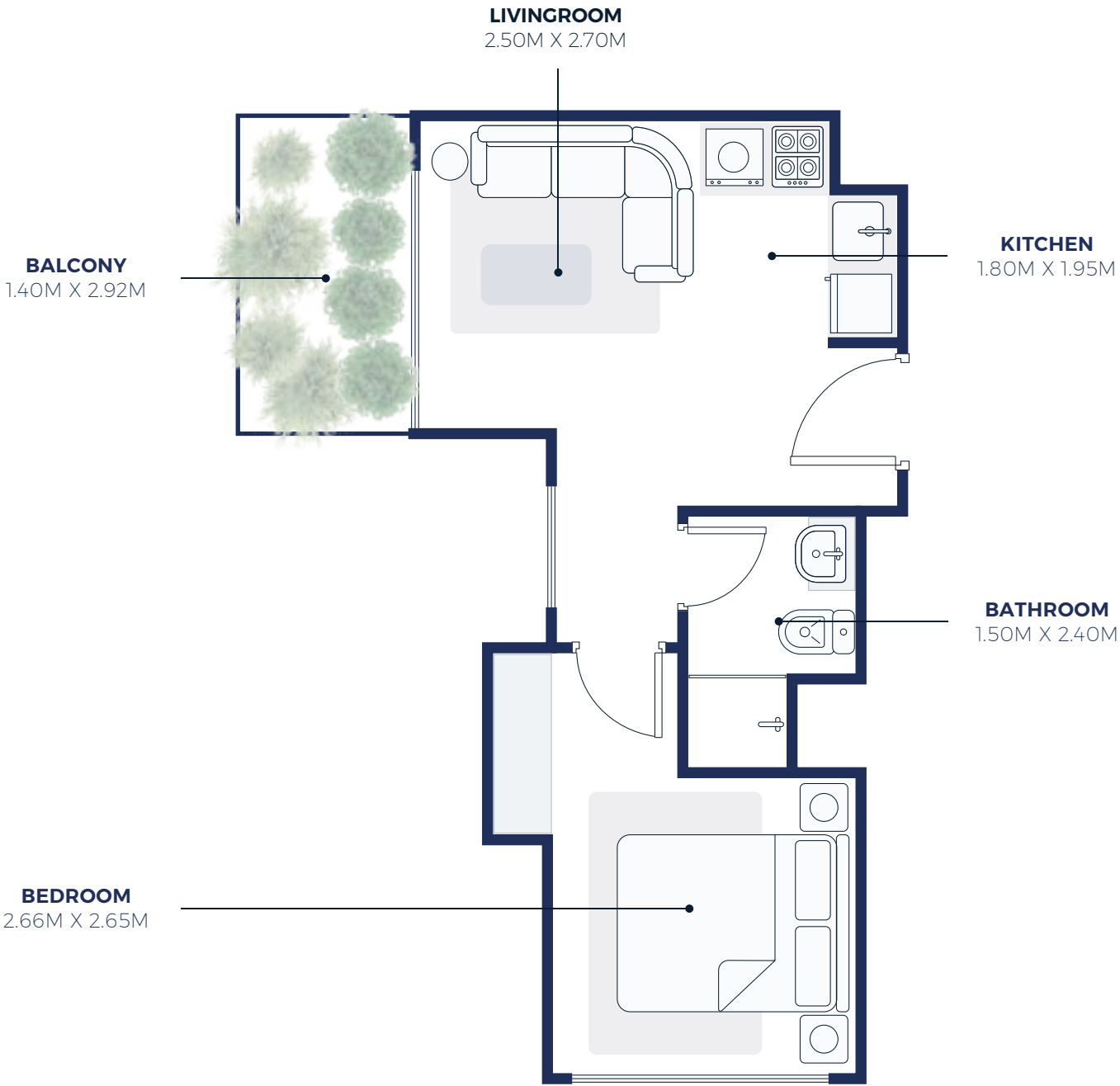
**1BR 3B** (2nd to 18th Floor)



SUIT AREA: 314.30 SQ.FT  
TOTAL AREA: 362.63 SQ.FT

FLOORPLAN

**1BR 4B** (2nd to 18th Floor)



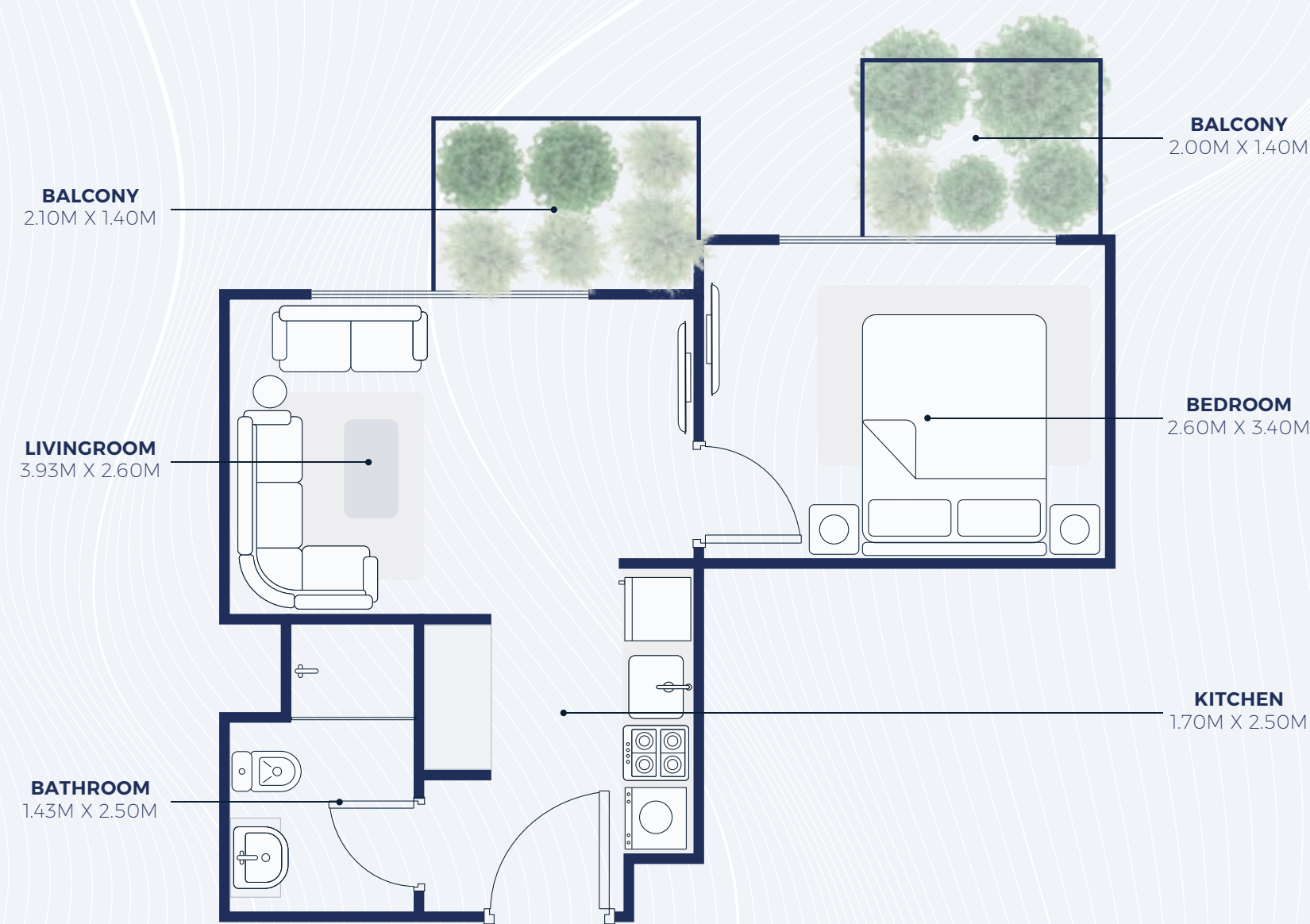
SUIT AREA: 346.16 SQ.FT  
TOTAL AREA: 393.95 SQ.FT





FLOORPLAN

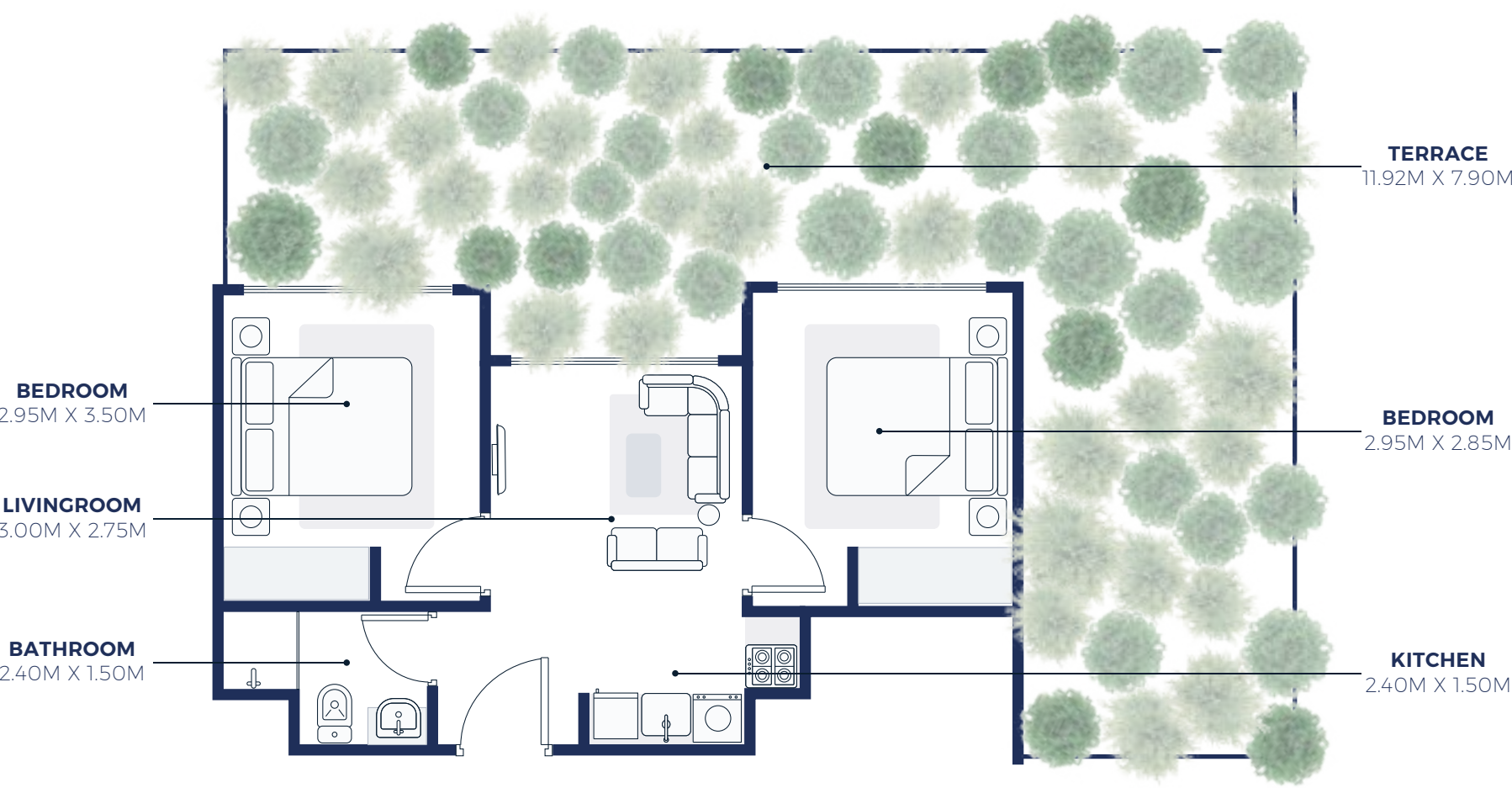
**1BR 5B** (5th,15th,6th,16th Floor)



SUIT AREA: 352.73 SQ.FT  
TOTAL AREA: 419.57 SQ.FT

FLOORPLAN

**2BR 1A** (1st FLOOR)



SUIT AREA: 462.41 SQ.FT  
TOTAL AREA: 994.1 SQ.FT

