

HYDE WALK  
BY IMTIAZ

**IMTIAZ**  
DEVELOPMENTS

# HYDE WALK

## BY IMTIAZ

Crafted for design enthusiasts, Hyde Walk by Imtiaz enriches Jumeirah Garden's panorama in Dubai. Positioned in the city's heart, it neighbors iconic landmarks like Museum of The Future, Burj Khalifa, Dubai Mall, Jumeirah Beach and many more promising a life of unparalleled convenience.

Hyde Walk by Imtiaz offers studios and 1 BHK. The ambiance is a blend of modern elegance and warmth, providing a tranquil retreat in bustling Jumeirah Garden. Each step within Hyde Walk isn't just a movement but a journey through Dubai's wonders. Discover a home harmonizing convenience, sophistication, and the true spirit of city living.





# IMTIAZ

DEVELOPMENTS

Imtiaz Developments is shaping Hyde Walk by Imtiaz with a clear vision: to offer more than just residences. Hyde Walk by Imtiaz is a testament to the commitment to providing a seamless blend of luxury and city living.

Imtiaz's goal is to create spaces that go beyond convenience, inviting residents to explore and enjoy the beauty of Dubai effortlessly. Hyde Walk is more than a home; it's an invitation to experience the vibrant and captivating essence of this beautiful city.



HYDE WALK  
by MIRA

## EVERY STEP IS A JOURNEY

Sheikh Zayed Road stands as a beacon for a dynamic community, symbolizing innovation and aspiration. Renowned for its strategic location and accessibility, this iconic thoroughfare has become a hub for dining, cultural experiences, and socializing. With its skyline views and proximity to key attractions, residents along Sheikh Zayed Road embrace a lifestyle that harnesses Dubai's boundless opportunities. The road's energy and connectivity make it an ideal choice for those seeking a vibrant living experience in the heart of the city.







## WALKING DISTANCE

Emirates Tower Metro Station	8 minute
Museum of The Future	10 minute
Dubai World Trade Center	10 minute
Dubai International Financial Center	8 minute
City Walk	7 minute
Coca-Cola Arena	7 minute
Burj Khalifa	10 minute
Dubai Mall	10 minute
La Mer beach	10 minute

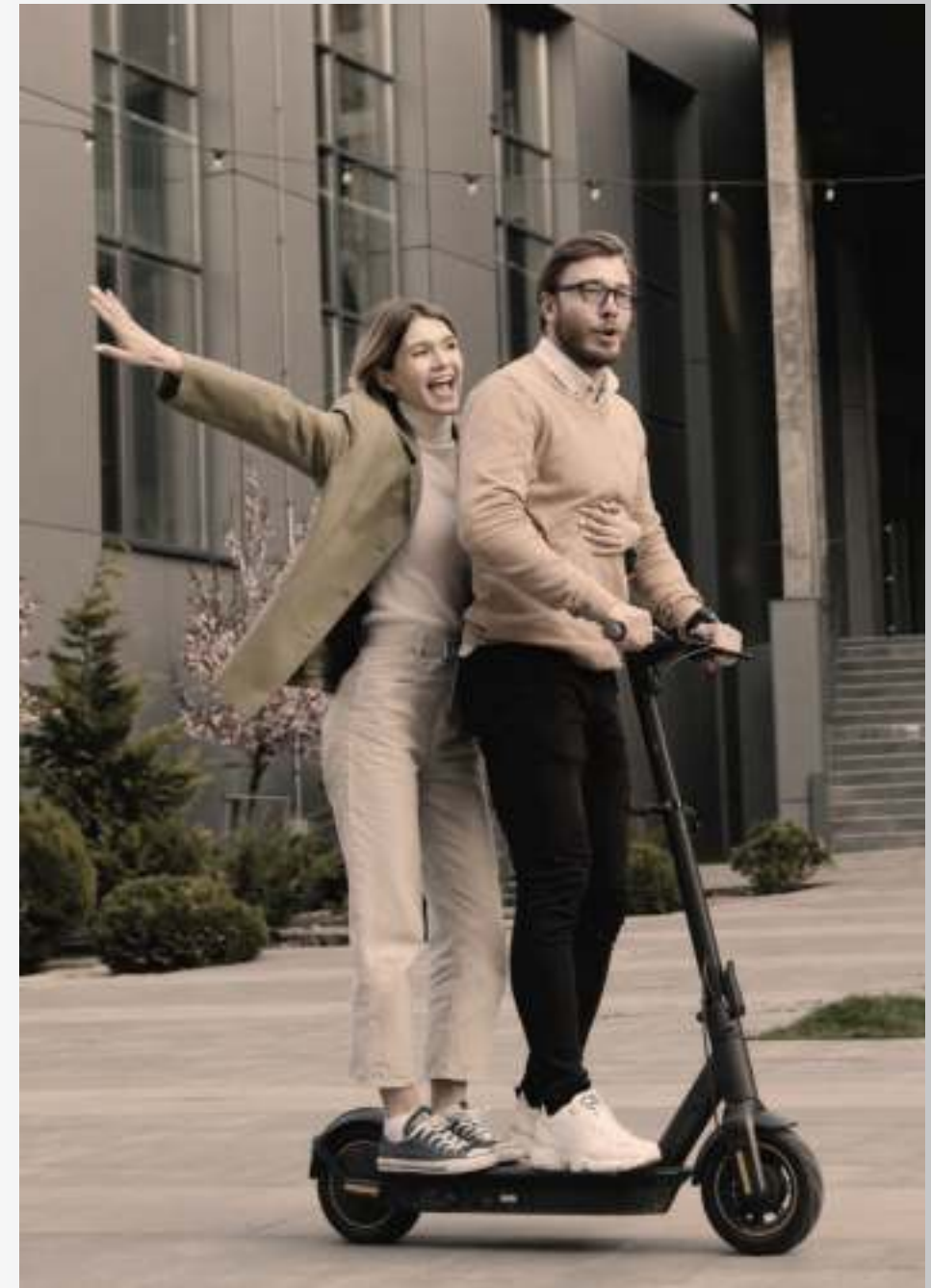




## THE JOURNEY BEGINS HERE

Hyde Walk by Imtiaz is strategically positioned, creating a lifestyle where the pulse of the city becomes an integral part of everyday life.

Beyond the landmarks, the convenience of having renowned restaurants and cafes within walking distance adds a layer of luxury and accessibility. This central location not only saves time but also allows residents to immerse themselves in the vibrant energy of the city without the need for extensive travel. Hyde Walk truly becomes the beating heart of Dubai, where every resident is not just a spectator but an active participant in the dynamic rhythm of this cosmopolitan metropolis.




DUBAI MALL/  
BURJ KHALIFA





EMIRATES  
TOWER METRO  
STATION/  
MUSEUM OF  
THE FUTURE



LA MER BEACH

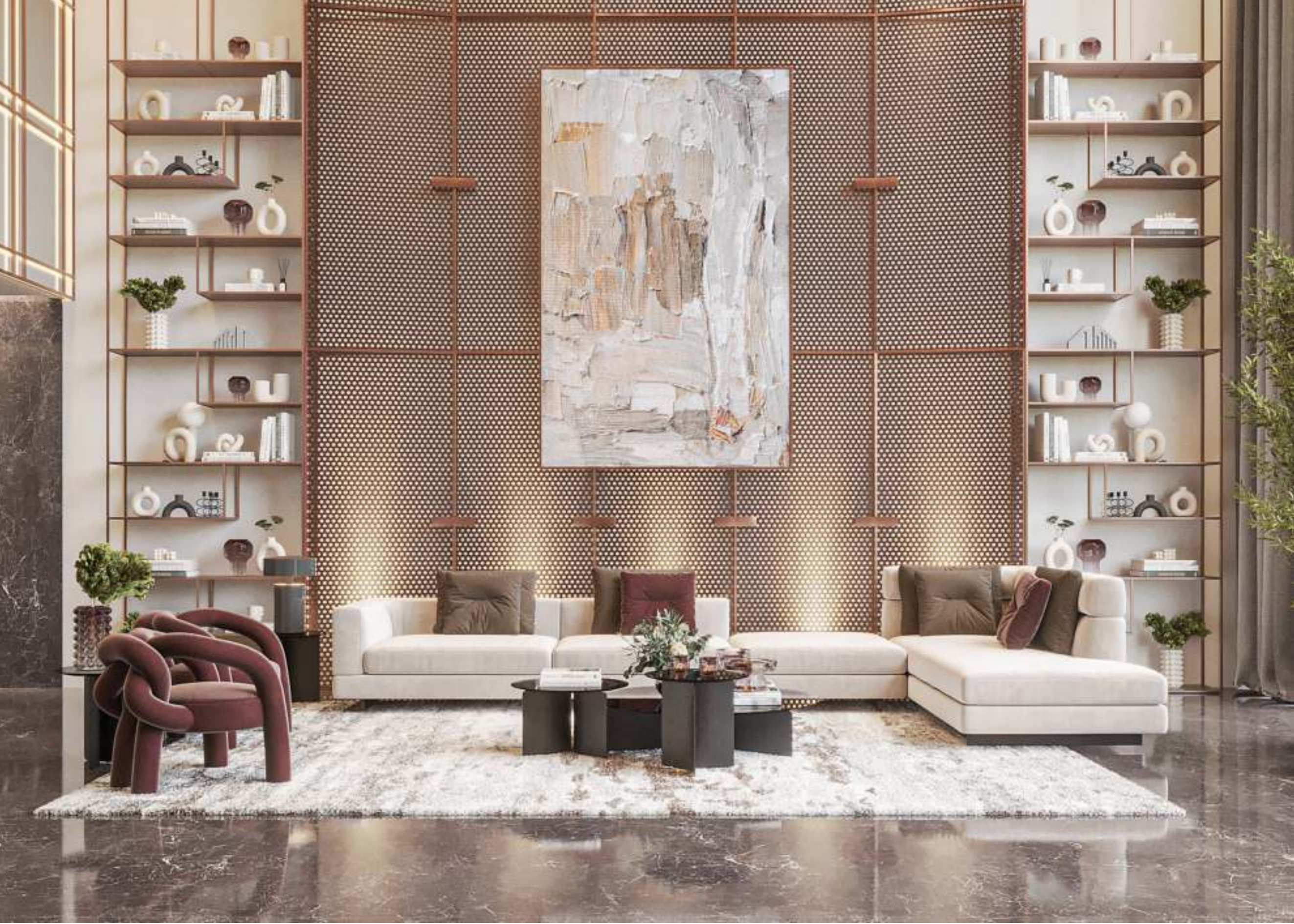
CITY WALK



## ENTER LIKE A STAR

After a day of exploring the city's delights, relishing exquisite cuisine, and capturing beautiful moments, returning home to Hyde Walk by Imtiaz is a star-studded experience. The entrance of the building is meticulously crafted, exuding a lavish ambiance that instantly makes you feel like a star. The design is not just visually stunning but also incredibly welcoming and comfortable, creating a grand finale to your day's adventures. Every arrival is a red-carpet moment, making your entrance as memorable as the experiences you've enjoyed in the vibrant city just beyond the doorstep.







IMTIAZ  
DEVELOPMENTS





## REFRESH AND RELAX

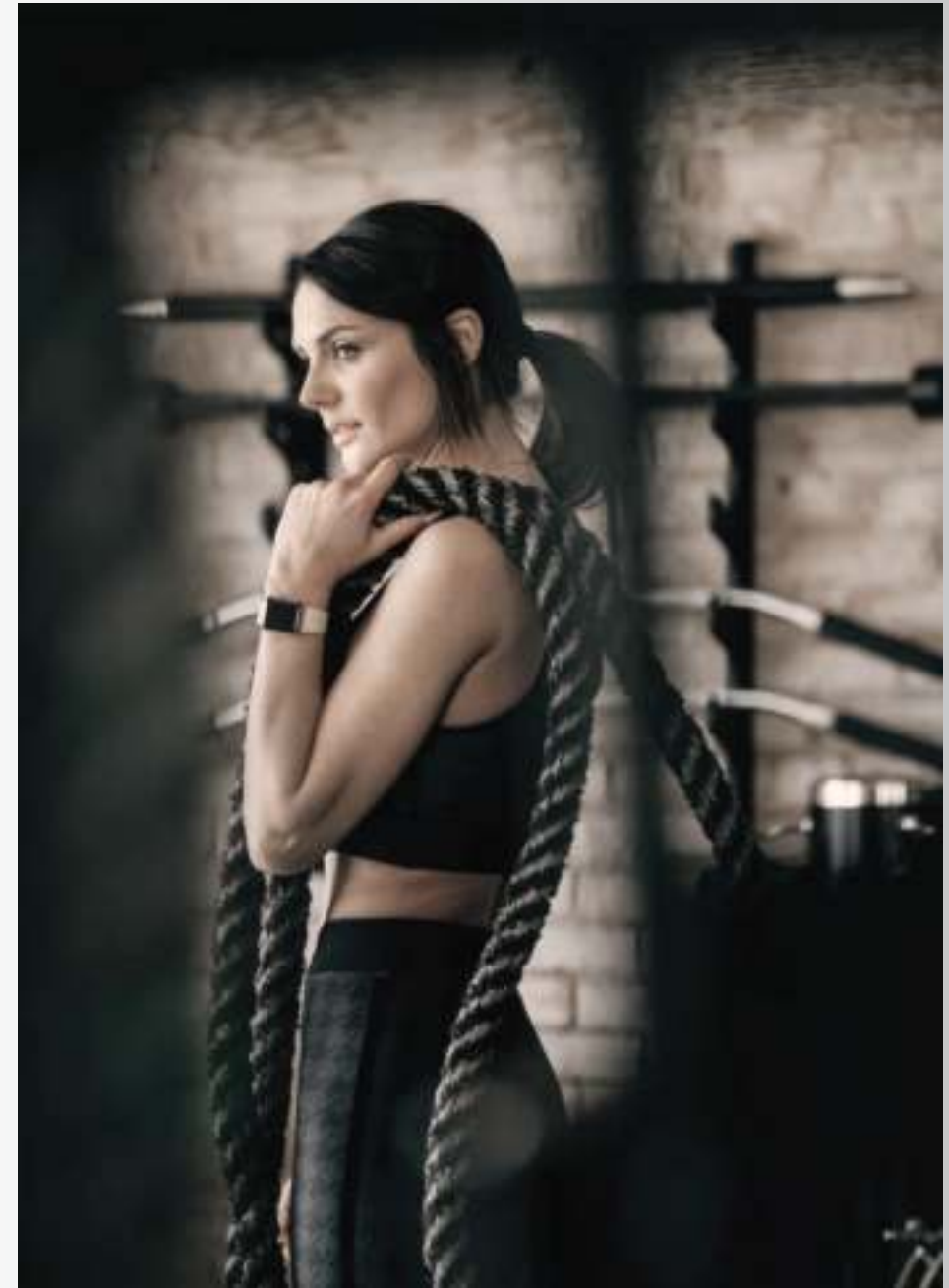
Nestled at the pinnacle of Hyde Walk, the pool deck offers an exquisite retreat. It features a shaded terrace, infinity pools for both families and adults and sun-loungers. This elevated sanctuary is not just a pool but an oasis of sophistication and relaxation. The Hyde Walk pool becomes the ultimate vantage point to witness the sunset over the iconic landmarks of Dubai. With its elevated design and serene ambiance, The Pool Club at Hyde Walk is destined to become the favored escape for residents, creating moments of tranquility against the dynamic backdrop of the city.

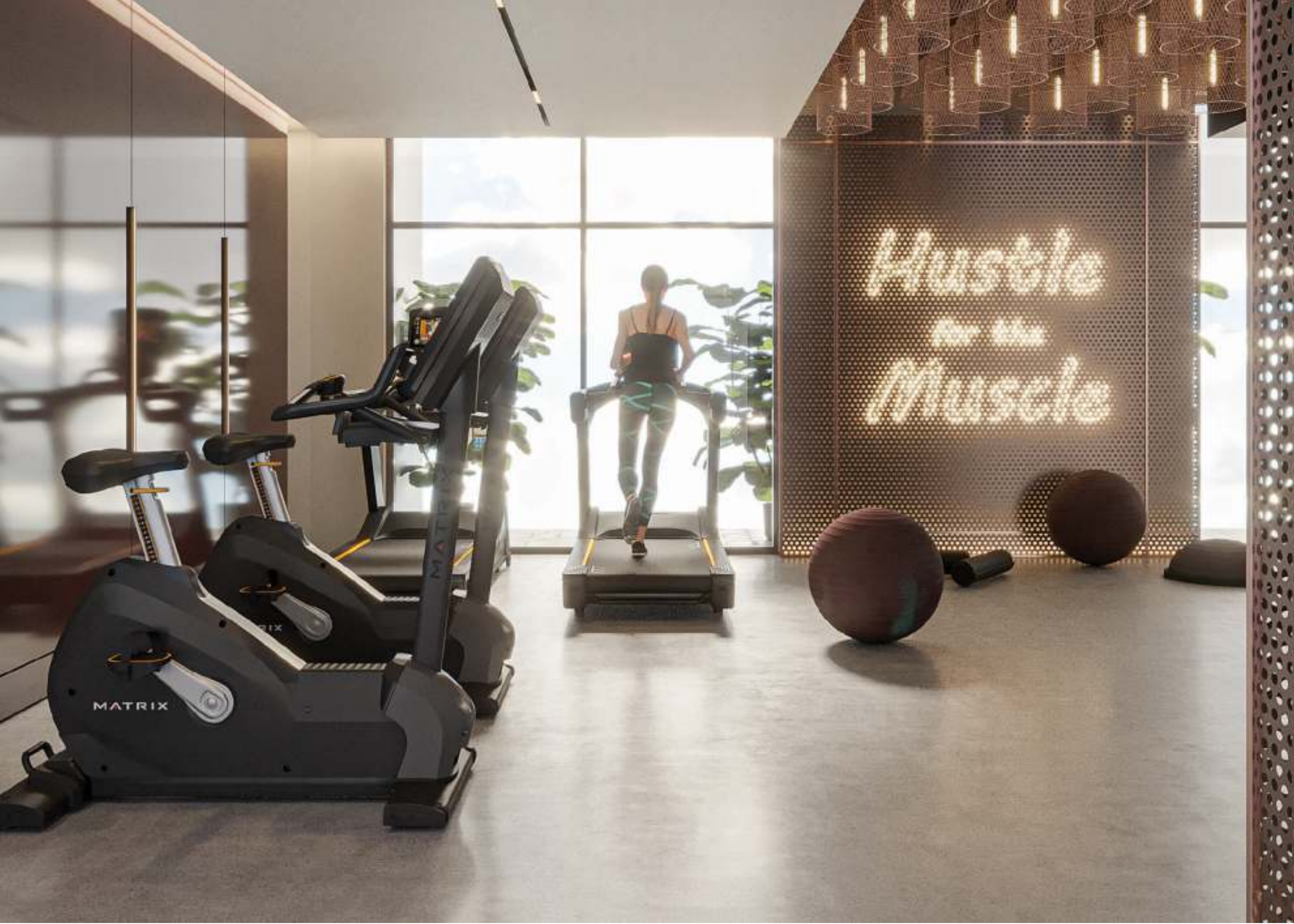




## STRENGTH IN STYLE

Hyde Walk's gym is not just a fitness space; it's a realm of wellness where strength meets luxury. This exclusive fitness center is designed for those who seek more than just a workout. With state-of-the-art equipment and a dynamic atmosphere, it provides an inviting space to sculpt and strengthen. Whether you're a fitness enthusiast or a beginner, Hyde Walk's gym is a place where health is nurtured in style, offering an elevated experience for residents to pursue their wellness goals with vigor and vitality.





MATRIX

Muscle  
to the  
Muscle





## HYDE CLUBHOUSE

Hyde Walk's Clubhouse is the epitome of refined leisure, where luxury meets recreation. This exclusive space serves as the social hub for residents, offering a haven of relaxation and sophisticated entertainment. With its chic design and an array of amenities, the Clubhouse becomes a versatile retreat for gatherings, celebrations, or simply unwinding in style. From elite events to casual meetups, Hyde Walk's Clubhouse is where the community comes together, fostering connections and creating a vibrant social pulse within the heart of this dynamic residence.







## THE RESIDENCES

Hyde Walk is curated to suit diverse lifestyles, presenting a meticulously designed array of living spaces. This includes stylish studios and contemporary 1-bedroom apartments, each crafted with a keen eye for detail. From the cozy charm of the studios to the modern elegance of the 1-bedroom apartments, Hyde Walk ensures that every home embodies a perfect blend of style and quality. Each residence is thoughtfully designed to create a living experience that is not only aesthetically pleasing but also attuned to the unique needs and preferences of its occupants.









## THE KITCHEN

Bathed in natural light pouring through floor-to-ceiling windows, Hyde Walk's kitchens redefine modern elegance. A play of contrasting elements, from sleek black accents to an elevated neutral palette, infuses sophistication into every detail, including ingenious storage solutions, top-notch appliances, and seamlessly integrated spaces. At the heart of each kitchen, a grand island becomes a focal point, inviting families to gather for moments of quality time. Whether it's shared meals, social occasions, or coffee breaks, Hyde Walk's kitchens are not just functional spaces but vibrant hubs where culinary artistry and communal connections flourish.





## SANITARY FACILITIES

Radiating freshness and functionality, Hyde Walk's bathrooms are designed as sanctuaries for self-care and relaxation. Warm finishes and intricate detailing create a welcoming ambiance, setting the stage for indulgent cleansing rituals.

Behind the scenes, subtle ambient lighting enhances the atmosphere, while ample hidden storage ensures a clutter-free space. The generous rain shower adds a touch of luxury, offering residents a seamless and rejuvenating experience as they embark on their daily routines. In every aspect, Hyde Walk's bathrooms epitomize a perfect blend of style and practicality.









# KEY FEATURES



ROOFTOP POOL



CLUB ROOM



FULLY FURNISHED



EXTRA VISITORS PARKING



FULLY EQUIPPED GYM



ELECTRIC VEHICLE  
RECHARGE STATION

