

JADE



DISTRICT 11

---

THE FIELDS

MOHAMMED BIN RASHID AL MAKTOUM CITY





Images used are for illustration proposes only

## WELCOME TO JADE AT THE FIELDS

—  
*Introduction*

JADE IS A SERENE SETTING AT THE FIELDS AND IN THE HEART OF MOHAMMED BIN RASHID AL MAKTOUM CITY, DISTRICT 11, INSPIRED BY THE GREENERY AND OPENNESS OF NATURE INFUSED WITH A SUBTLE ORIENTAL INFLUENCE.

Many myths and traditions surround the unique and valuable gemstone Jade, as it represents energy, beauty, creativity and harmony. For many years mankind has been fascinated by Jade due to its unique physical and philosophical properties, with special significance in the Far East.

Like the precious jewel, this tranquil community glows with rich deep green colours from the bountiful gardens. Here leafy foliage blows gently in the breeze and contemporary homes are embellished with high-quality stone and materials to inspire visions of luxury and refinement.



A peaceful, calming energy flows through Jade, a vibrant community full of excitement.



Rooted in luscious greenery, the Jade community feels like a world away from city life, providing an oasis of calm to nurture the mind, body and soul.

## THE FIELDS LOCATION MAP

—  
*Location*

NESTLED IN THE HEART OF MOHAMMED BIN RASHID AL MAKTOUM CITY, DISTRICT 11 AND JUST A STONE'S THROW FROM THE BUZZ OF DOWNTOWN DUBAI.

Being conveniently located next to the main arteries of Dubai's city centre and within the expansive Mohammed Bin Rashid Al Maktoum City, allows residents easy access to all highway routes, Downtown, community parks, shopping centres, schools and more. It is the only address you will ever want.







Welcome to the new name in Dubai luxury community living. The sprawling green gardens and picturesque landscaping of the Jade community is home to 360 spacious townhouses. Come home to Jade at The Fields.

TOWNHOUSES	Units	Size Sq. ft.
J3 (3-bedrooms)	66	2040
J4 (4-bedrooms)	174	2321
J4E (4-bedrooms, end units)	120	2663

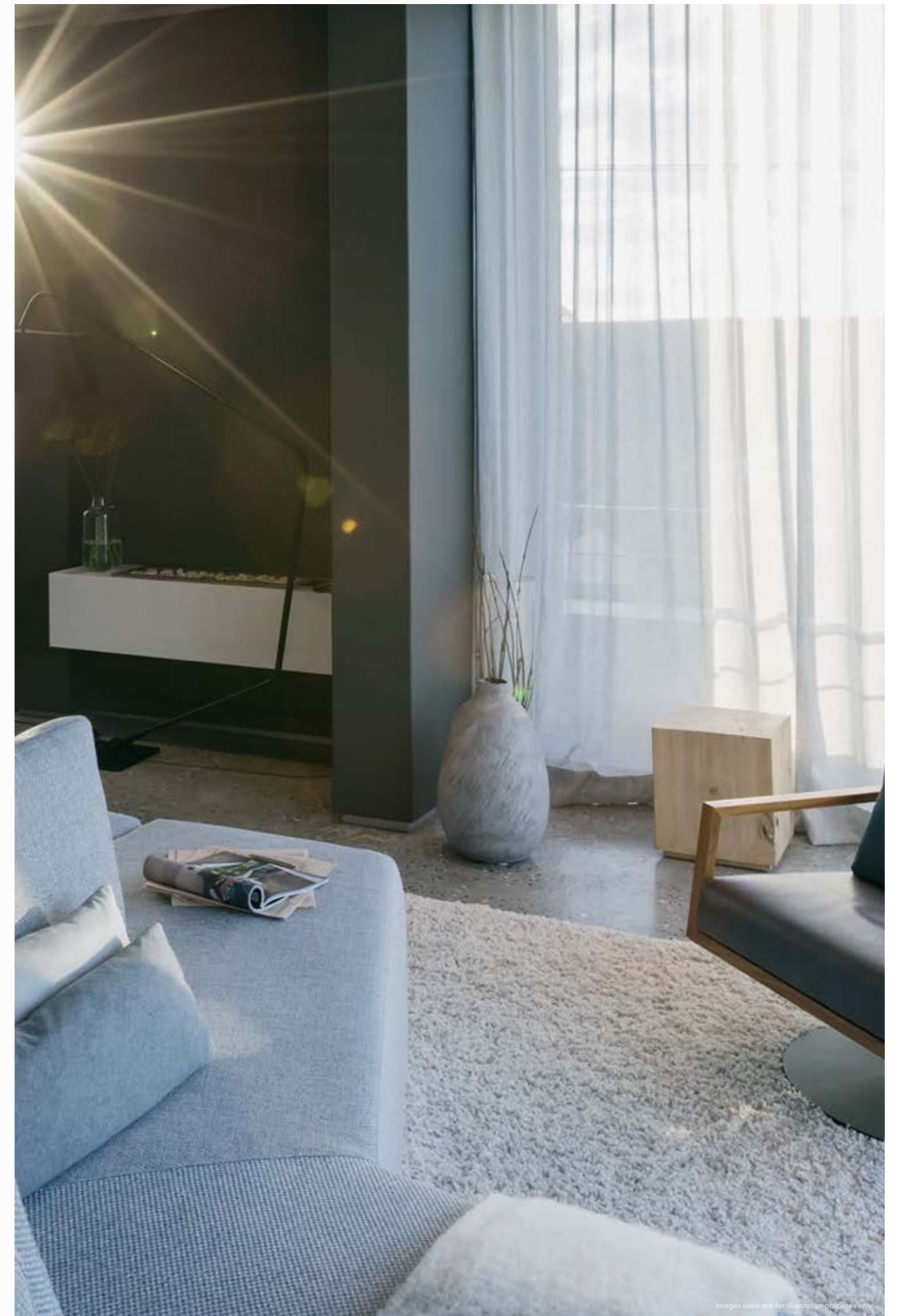


## NATURE AND ARCHITECTURE COMBINED

—  
*Layout*

EACH AND EVERY PROPERTY SHOWCASES  
THE VERY FINEST IN PREMIUM MATERIALS  
AND CONTEMPORARY LOOKS.

Jade seamlessly combines sleek design and  
modern appliances with open space and  
verdant colour schemes inspired by nature.





Images used are for illustration purposes only

Developed with modern designs in mind, these efficient homes offer easy-flow open-plan living for ultimate flexibility and maximum impression.



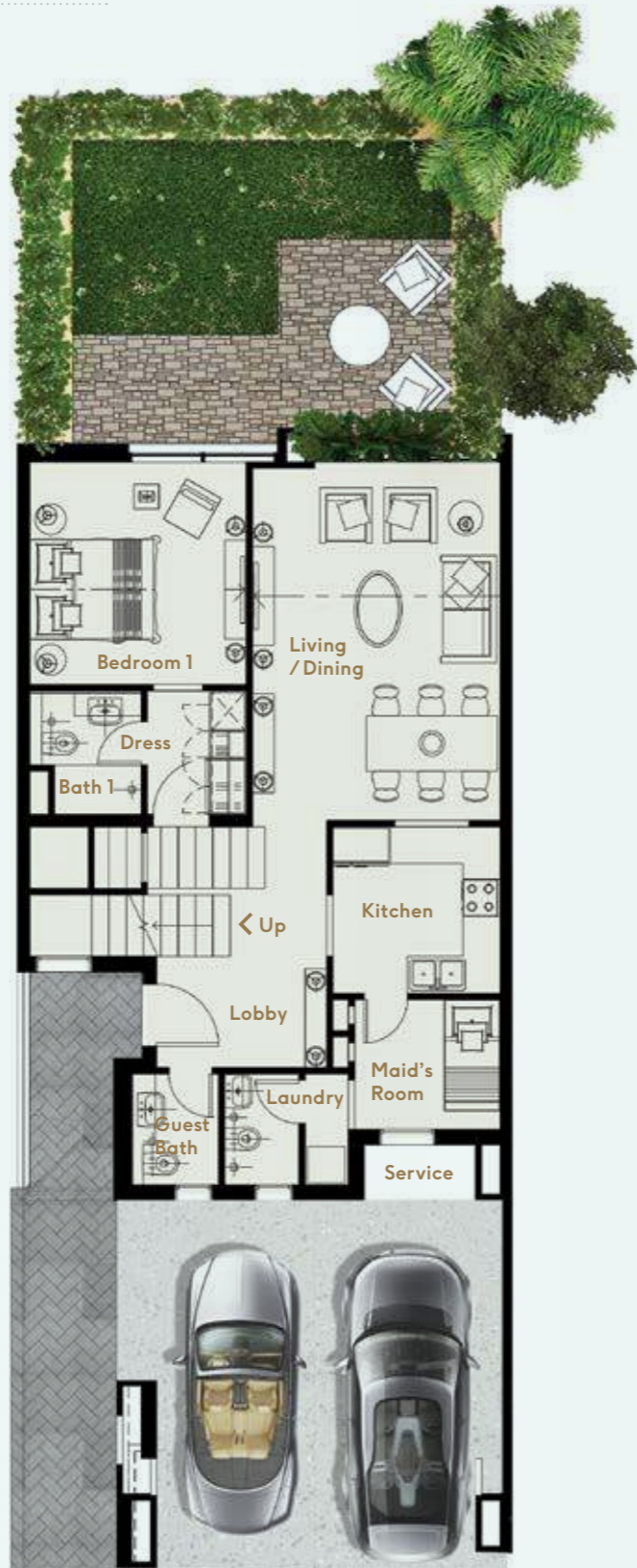
## J3 TOWNHOUSES

Contemporary and airy, with floor to ceiling windows, built to match your style and assure comfort.

J3 – TOWNHOUSE

Total Area  
2040sq.ft. (approx.)

Includes 3-bedrooms,  
family room and  
maid's room



J3 – GROUND FLOOR

Total Ground Floor Area  
928sq.ft. (approx.)



J3 – FIRST FLOOR

Total First Floor Area  
1112sq.ft. (approx.)





## J4 TOWNHOUSES

Spacious enclosed terraces and gardens both in the front and back of your home, allows your family to spread out, entertain and engage in outdoor activities.

J4 – TOWNHOUSE

Total Area  
2321sq.ft. (approx.)

Includes 4-bedrooms,  
family room and  
maid's room



J4 – GROUND FLOOR

Total Ground Floor Area  
963sq.ft. (approx.)



J4 – FIRST FLOOR

Total First Floor Area  
1358sq.ft. (approx.)







## J4E TOWNHOUSES

With a layout to suit you, our end unit homes provide extra garden space for big families to enjoy.

J4E – TOWNHOUSE

Total Area  
2683sq.ft. (approx.)

End unit that includes  
4-bedrooms, family room  
and maid's room



J4E – GROUND FLOOR

Total Ground Floor Area  
1073sq.ft. (approx.)



J4E – FIRST FLOOR

Total First Floor Area  
1610sq.ft. (approx.)





Images used are for illustration purposes only

## GREEN IS AT OUR HEART

—  
*Community  
Living*

THE SUPERB SENSE OF COMMUNITY LIVING IN JADE MEANS RESIDENTS AND VISITORS ALIKE ARE GUARANTEED A BLISSFUL COMBINATION OF A WARM, WELCOMING VIBRANCY AND SERENE ZEN-LIKE CALM.

In the Jade community, families thrive and friendships blossom. Join your neighbours in the public park for Tai Chi or Yoga classes which will stretch your muscles and focus your mind. Bring your children to the local Children's Vegetable Patch to plant, grow and harvest various vegetation and spend time in the great outdoors. Take a family stroll into our Community Centre to discover exciting foods and sparkling trinkets.

Wander to the Community Wellbeing Facility to learn how nature can help heal ailments and boost vitality. Speak to the knowledgeable staff experienced in traditional, natural remedies. Take a seat in the shaded courtyard and sip on a therapeutic herbal tea, specially blended to meet your health needs, or read a book in the perfectly-manicured minimalistic Zen Garden.



## THE DREAM OF LUXURY LIVING HAS NOW COME TRUE

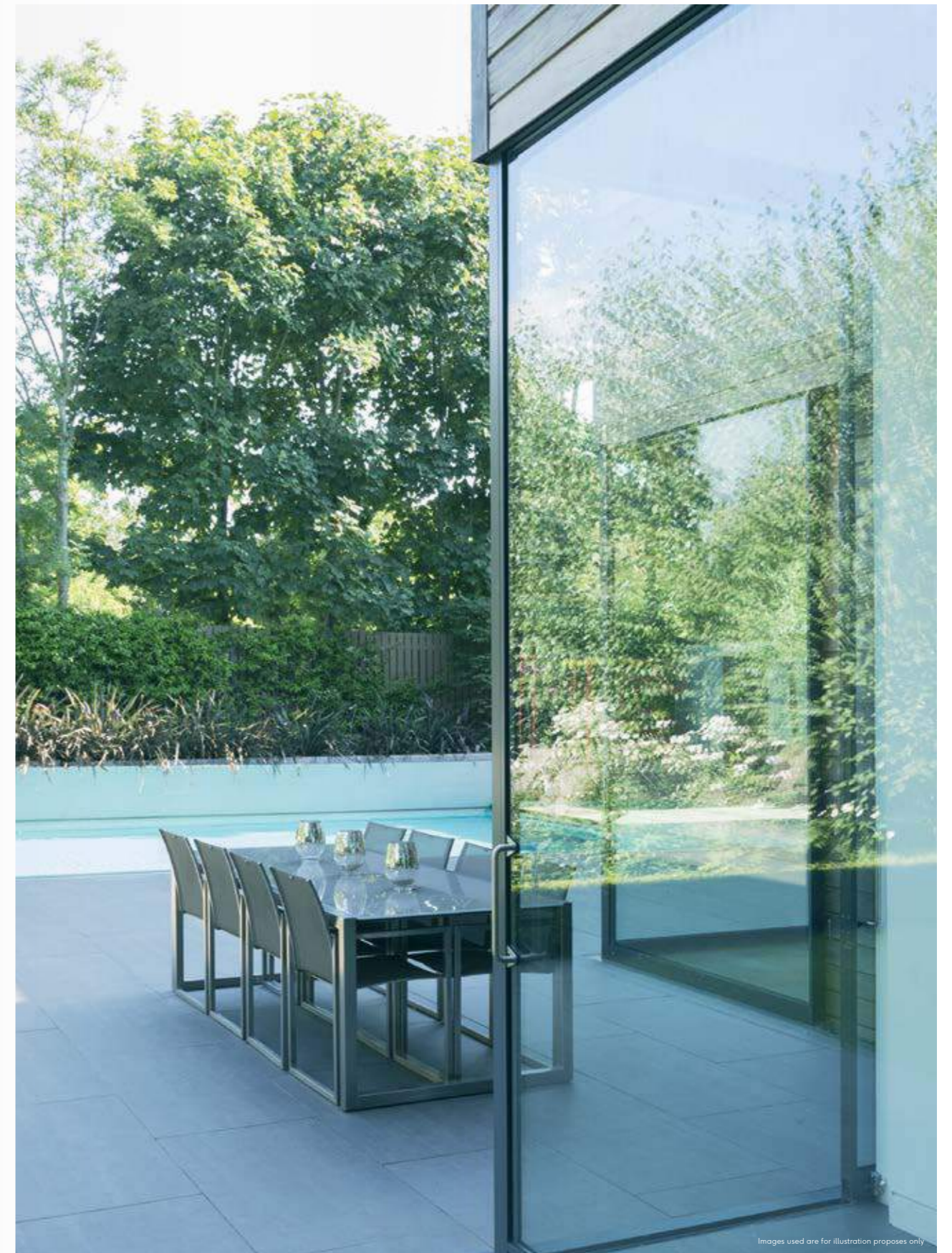
—  
*Developer  
and Contact  
Details*

OUR OBJECTIVE IS TO REDEFINE THE NOTION OF EXCELLENCE BY DEVELOPING LUXURY COMMUNITIES IN EVERY ASPECT AND EVERY DETAIL.

We are pleased to expand our success story following the enthusiastically received Millennium Estates community at Meydan City and soon to be home to over 800 families across 9 million sq.ft. of land.

Jade at The Fields, our latest creation, promises to continue our tradition of offering unparalleled value with our commitment to deliver. At Jade we aim to make luxury living, approachable, tangible and above all deliverable.

For more information contact 800-SPF [773]  
or [jade@thefields.ae](mailto:jade@thefields.ae)



Images used are for illustration purposes only

DEVELOPED BY



MASTER DEVELOPER



ESCROW ACCOUNT



SALES AGENT



Developer number: 946, Development number: 1612, Escrow account number: 278906, Agent ORN: 1021

IMPORTANT NOTICE: These materials and the features and amenities described and depicted in this brochure are based upon current development plans, which are subject to change without notice. No guarantee is made that the features, amenities and facilities depicted by artists' renderings or otherwise described will be provided, or if provided, will be of the same type, size or nature as described or depicted.

DEVELOPED BY



FOR MORE INFORMATION  
TEL: 800 SPF (773) OR EMAIL: [JADE@THEFIELDS.AE](mailto:JADE@THEFIELDS.AE)