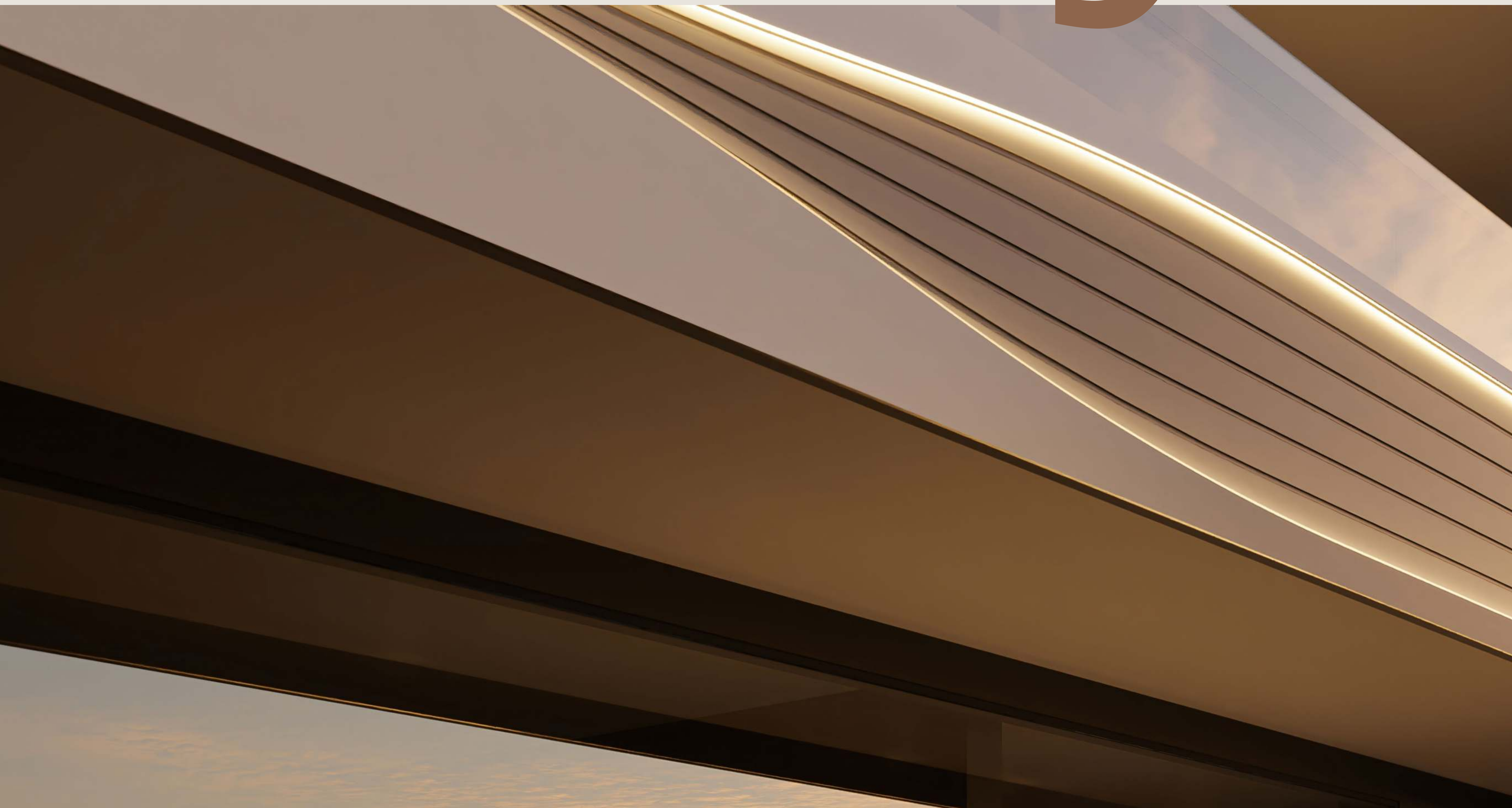


Galaxy*



JARDIN
ASTRAL

Jumeirah Garden City



LIFE IN THE GARDEN OF STARS

Jardin Astral is an ultra-luxury, garden facing, designer apartment complex, with 46 exclusive homes in the heart of Jumeirah Garden City: just under fifteen minutes from Dubai's most iconic urban centres.

Finely balanced between the vibrant life of the city and a calm, green, walkable community, and appointed with the most luxurious amenities, this is your home nestled in the best of many worlds. This is your Galaxy.



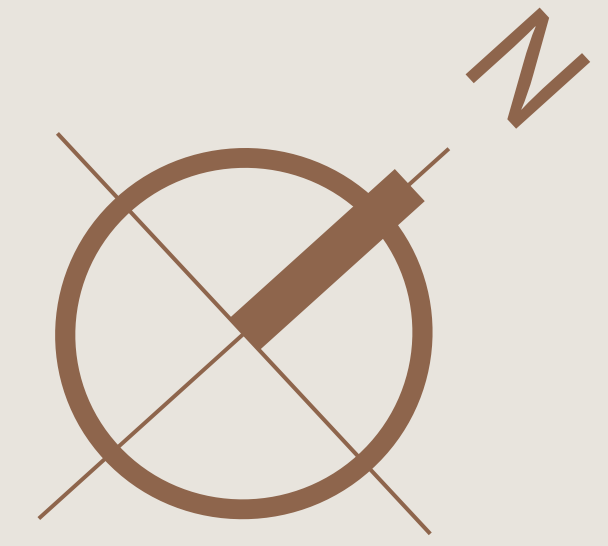
✦ Location

LIFE IN THE CENTRAL ORBIT

Living in Jardin Astral, you are a quick walk or short drive away from every landmark, and centers of activity. Downtown Dubai, International Airport (DXB), City Walk, World Trade Center, Jumeirah Beach, and more.



✦ Central Hub



JUMEIRAH GARDEN CITY

Jumeirah Garden City is the evergreen heart of Dubai, under visionary redevelopment for prime residential use. Its low-density master plan with great walkability, charming character, and large community parks attract the top tier of the city's global society and culture.



✦ Architecture

INSPIRED FLUIDIC DESIGN

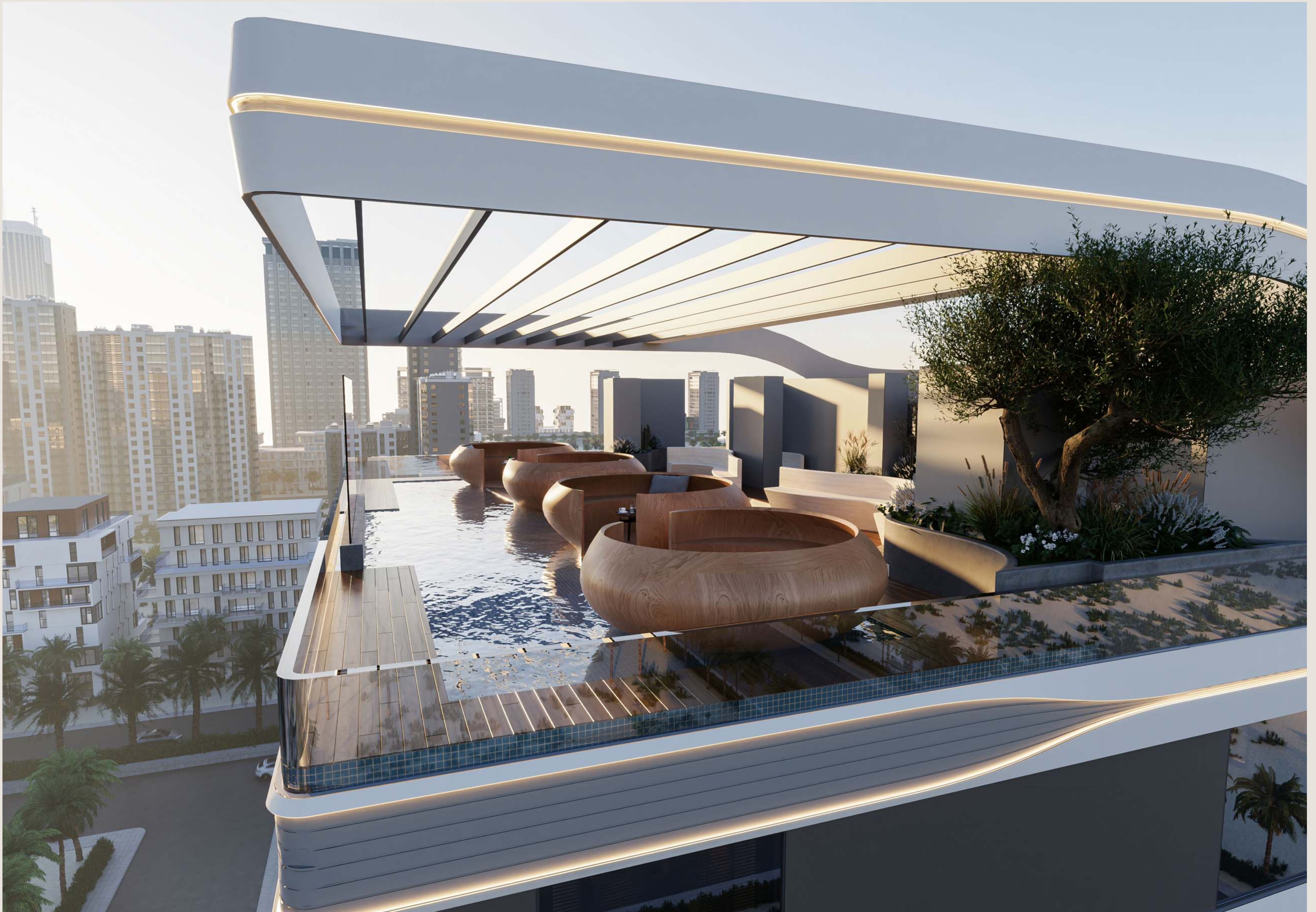
The exterior and interior lines forming Jardin Astral are inspired by the northern lights, comets and meteor showers: streaks of light, stellar curves and space-age fluidic contours echo some of the most contemporary global architectural design.





The distinct fluidic design encapsulates multilevel parking and eight floors of residence.





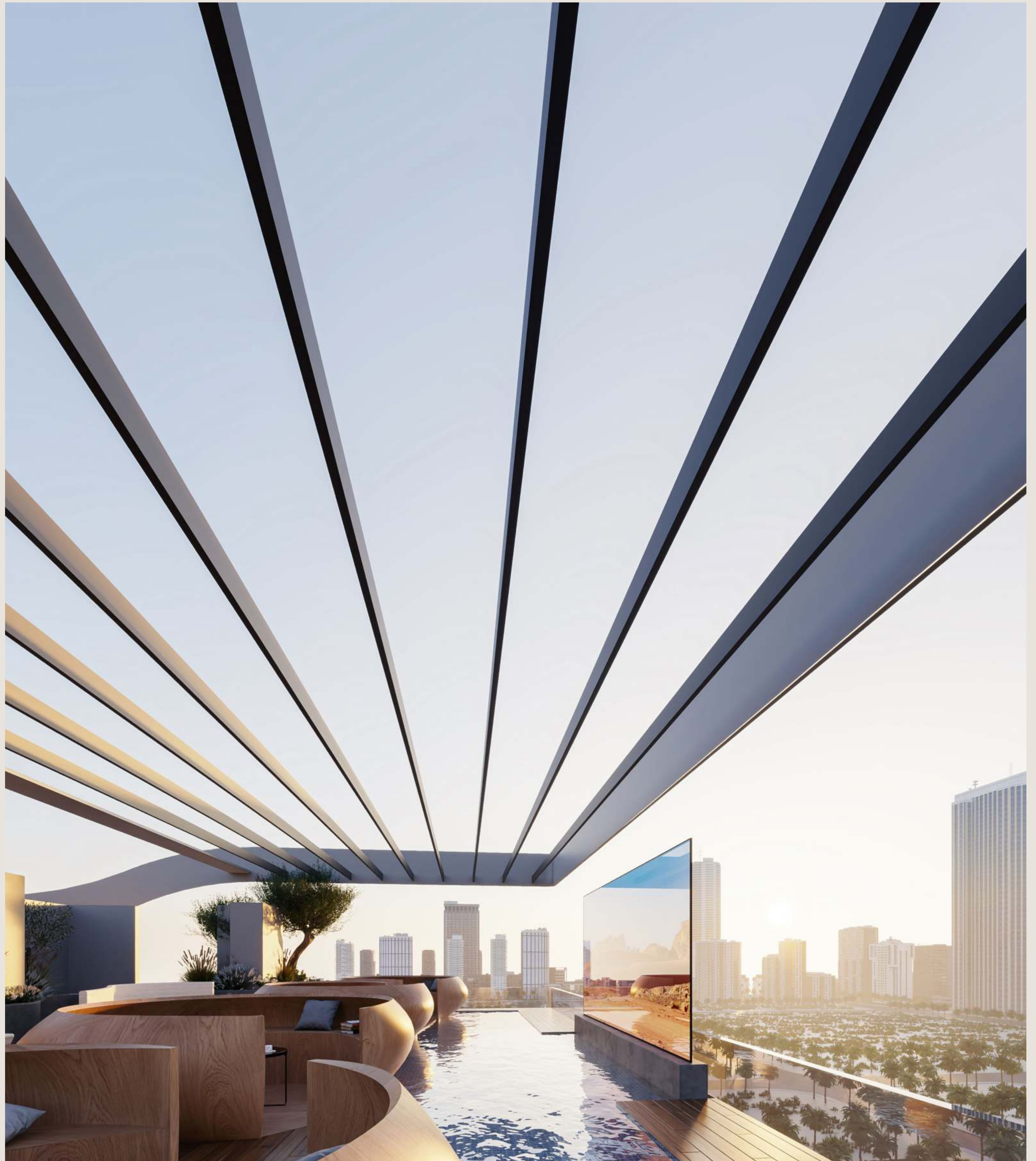
The Club House on the first floor with swimming pool and sunken seating and workstations offers a great view of the park.



✦ Leisure & Amenities

GARDEN OF STARS ON EARTH

This is a star-studded garden facing property: with a first floor club house, swimming pool/ sun deck for work and play, four exclusive apartments with large private terraces, and a rooftop gazebo with a starry night-time display.



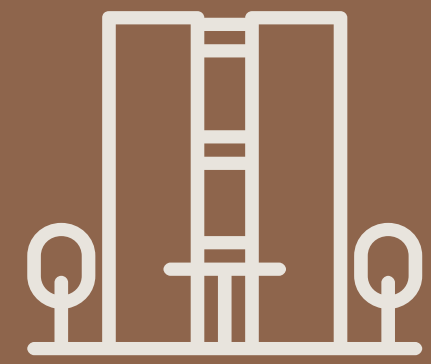


Rooftop Aqua Lounge/ Silent Cinema



View From Park Facing Apartment

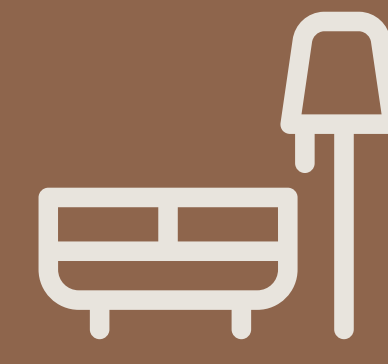
✦ Project Features



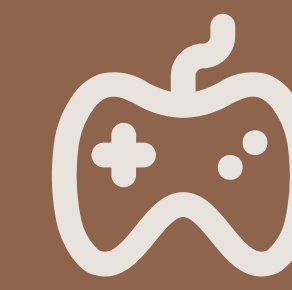
Facade Illumination



Central Hub



Club House



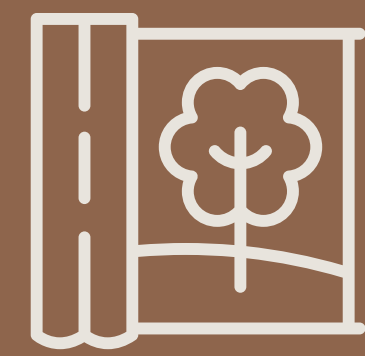
Work+Play Features



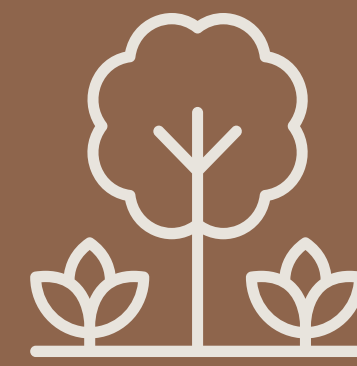
Smart Home
Integration



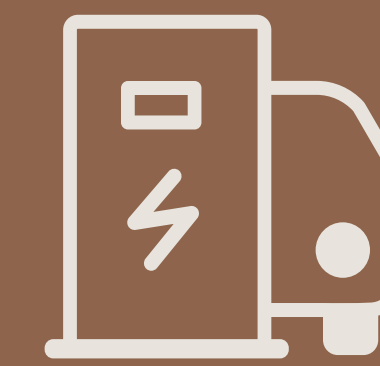
Starlit Lobby



Garden View
Options



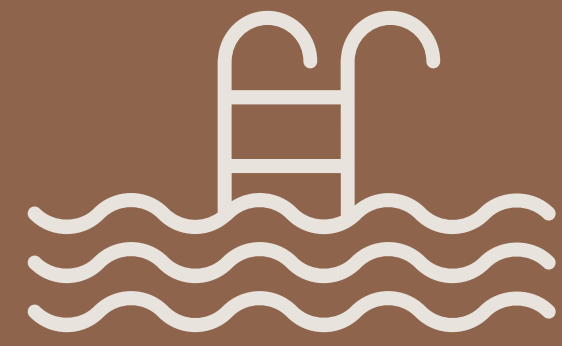
Apartments With
Private Terraces



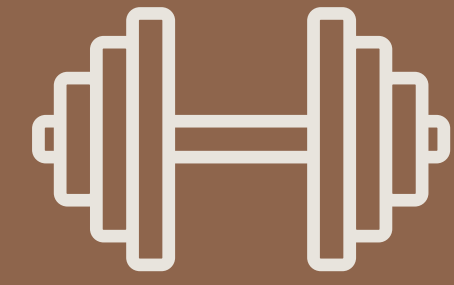
EV Charging
Stations



✦ Club House Features



Swimming Pool



Gym



Work Stations



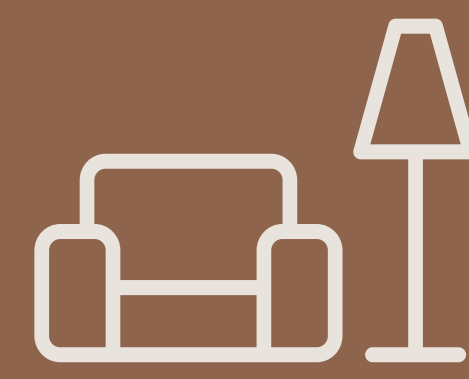
Silent Cinema



Juice Bar



Library



Lounges



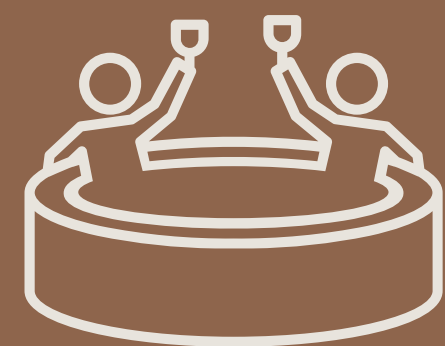
Sauna



Steam Bath



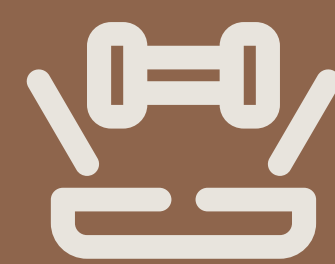
BBQ Area



Sunken Pool
Seating



Rooftop Aqua
Lounge



Digital Fitness



First Floor Swimming Pool/ Sun Deck

STYLE, LUXURY & RELIABILITY

The interiors are finished and fitted using top grade materials and surfaces, with great attention to detail. They are well-appointed with the latest technology and appliances by world-leading brands in flooring, kitchens, plumbing and electronics.



Club House Lounge



Club House Work Station



Lobby Reception



Lobby Entrance



Rooftop Gym



Digital Fitness

✦ Apartment Features



Fully Fitted Kitchen



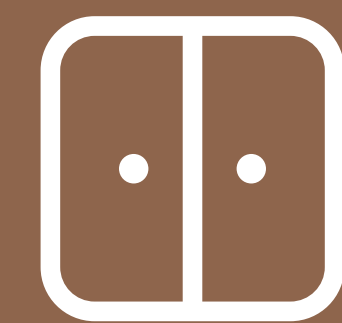
Bio Metric/ Finger
Print Main Door
Lock



Smart Home
Automation



Floor To Ceiling
Glass



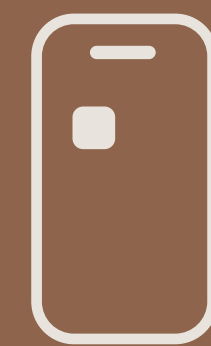
Fitted Wardrobes



Premium Branded
Kitchen Appliances



Luxury Range
Bath Fittings &
Sanitaryware



Mobile App



Biometric Door
Locks



Google Home



Thermostat Control





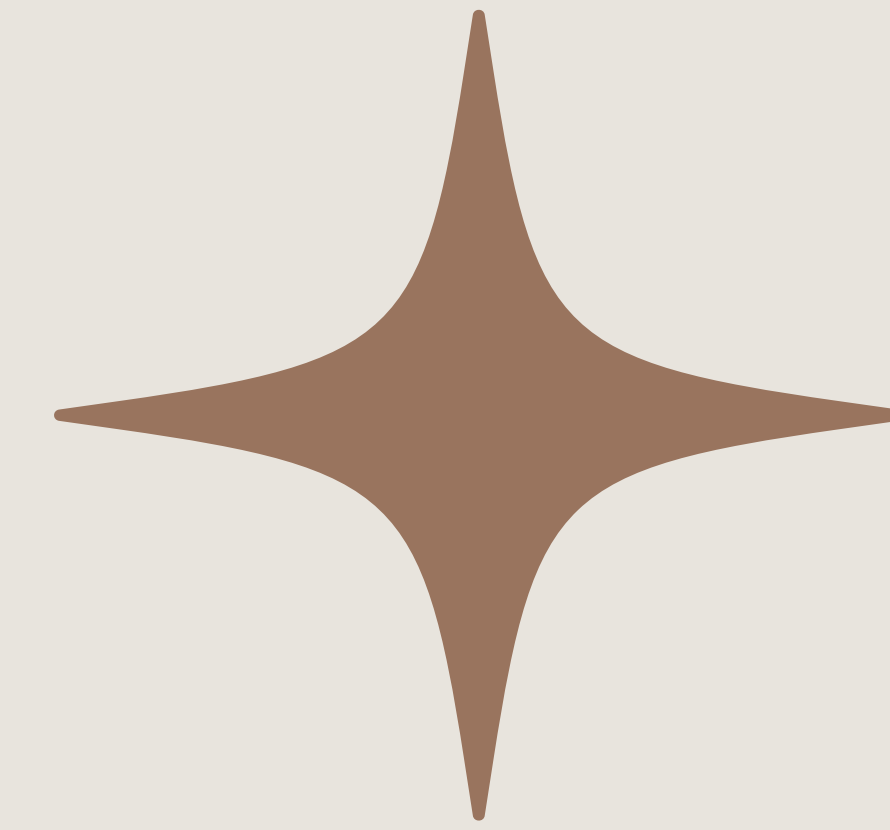








YOUR BEACON OF LIGHT, GUIDING YOU HOME



We're 30 years and counting. Established in Kerala, India, in 1994, we aren't simply developing residences, but designing flourishing communities. Our landmark is an iconic representation of the soul of Galaxy Builders: an anchor to our foundational truths, a beacon of light guiding you home. We vow to be ever-adapting, continually evolving and tirelessly crafting galaxies that resonate across generations.

