



KYOTO

BY ORO 24

CURATED
COMMUNITY
LIVING





AMENITIES



DRIVE-IN ENTRANCE /
DROP OFF



GRAND ENTRANCE
LOBBY



WATER FEATURE



MOVE IN/
MOVE OUT BAY



DELIVERY WORKERS
RESTING ZONE



JOGGING
TRACK



TERRACE BROOK



PADEL ON THE
WATER



BARBECUE
DECK



LANDSCAPE



OUTDOOR KIDS
PLAY AREA



INDOOR KIDS
PLAY AREA



VIRTUAL
GOLF



GAMING
ARCADE



BOWLING
ALLEY



BILLIARDS



40 METER
INFINITY POOL



LANDSCAPE POOL
DECK



CABANA
SEATING



OUTDOOR
CINEMA



KIDS
POOL



RAIN SHOWER
LOUNGE



MEDITATION
ZONE



SQUASH
COURT



RAINFOREST
DINING



HEALTH
CLUB



YOGA
DECK



ROOF TOP
LOUNGE



OBSERVATORY
LOUNGE



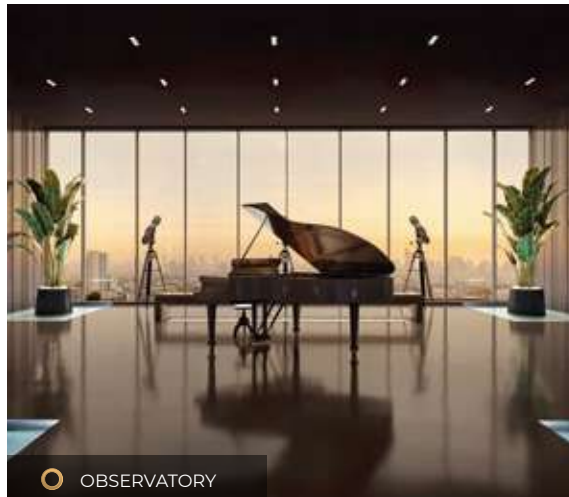
PARTY
HALL



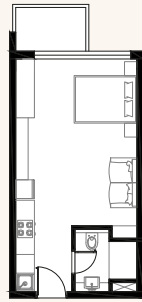
BUSINESS
CENTER



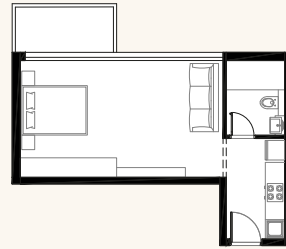
LIBRARY



○ STUDIO

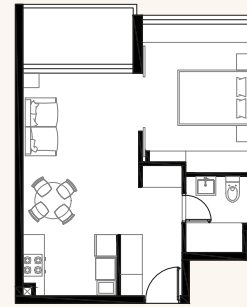


○ TYPE 1



○ TYPE 2

○ 1 BEDROOM

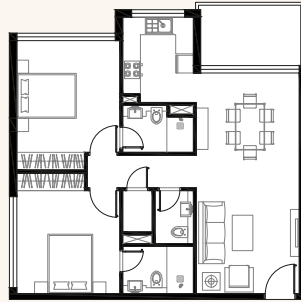


○ TYPE 1



○ TYPE 2

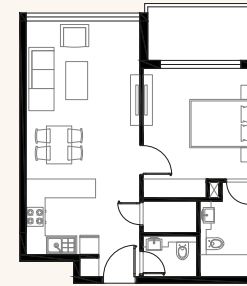
○ 2 BEDROOM



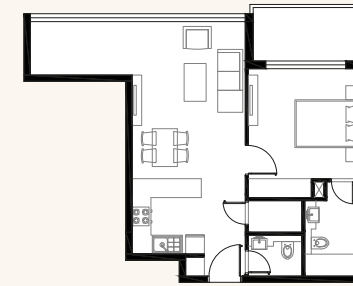
○ TYPE 1



○ TYPE 2

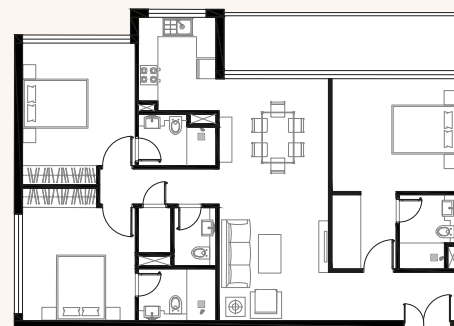


○ TYPE 3



○ TYPE 4

○ 3 BEDROOM



○ TYPE 1

ARJAN

CENTRALLY LOCATED



MAILLS

- MY CITY CENTRE - 5 MINS
- CIRCLE MALL - 10 MINS
- CITY CENTRE ME'AISEM - 10 MINS
- MALL OF THE EMIRATES - 15 MINS
- DUBAI HILLS MALL - 15 MINS
- MARINA MALL - 15 MINS
- AL BARSHA MALL - 15 MINS
- IBN BATTUTA MALL - 20 MINS
- NAKHEEL MALL - 20 MINS



MEDICAL FACILITIES

- NEURO SPINAL HOSPITAL - 5 MINS
- MEDICLINIC PARKVIEW HOSPITAL - 5 MINS
- ASTER CLINIC - 15 MINS
- SAUDI GERMAN HOSPITAL - 15 MINS
- AL ZAHRA HOSPITAL - 15 MINS
- MEDICLINIC MEADOWS - 20 MINS



SCHOOLS

- BLOOM WORLD ACADEMY - 5 MINS
- GEMS FOUNDERS SCHOOL - 5 MINS
- JSS INTERNATIONAL SCHOOL - 10 MINS
- SUNMARKE SCHOOL - 10 MINS
- ARCADIA SCHOOL - 10 MINS
- REPTON SCHOOL - 10 MINS
- NORD ANGLIA INTERNATIONAL SCHOOL - 10 MINS



AIRPORTS

- DUBAI INTERNATIONAL AIRPORT (DXB) - 30 MINS
- AL MAKTOUM INTERNATIONAL AIRPORT (DWC) - 30 MINS



BEACHES

- SUFOUH BEACH - 20 MINS
- MARINA BEACH - 20 MINS
- THE WALK - 25 MINS
- JBR - 25 MINS
- SUNSET BEACH - 25 MINS



COMMUNITY PARKS

- SABAT PARK - 10 MINS
- DOKHON PARK - 10 MINS
- SABAR PARK - 10 MINS
- BARSHA POND PARK - 15 MINS



MOTORWAYS

- AL HESSA ROAD - 10 MINS
- SHEIKH MOHAMMED BIN ZAYED ROAD - 10 MINS
- SHEIKH ZAYED ROAD - 20 MINS
- AL KHAIL ROAD - 10 MINS



ATTRACTIONS

- DUBAI MIRACLE GARDEN - 5 MINS
- DUBAI BUTTERFLY GARDEN - 5 MINS
- GLOBAL VILLAGE - 15 MINS

