

LIFESTYLE
**LANDMARK IN
THE HEART**



MARWA HEIGHTS

JUMEIRAH VILLAGE CIRCLE



MARWA HEIGHTS

—
by
New World Developments



WHO WE ARE?

Marwa Heights by New World Developments builds homes for you and your families for generations to enjoy and live happily. Our projects always stand for quality and luxury. We strictly follow the aspects like on time delivery and trust. We provide ultimate luxury which attracts the investors and residents alike. Our projects are in the best location. They are selected bearing in mind the ease of access and potential value of appreciation. We deliver solutions that match the global trends. Our unique ability to combine classic design principles and modern construction technology has led to the most innovative lifestyle improvement that has set us apart in the hearts and minds of hundreds of satisfied customers. We ensure to improve the customer experiences through constant innovation and understanding.



MARWA HEIGHTS



WELCOME TO **MARWA HEIGHTS**



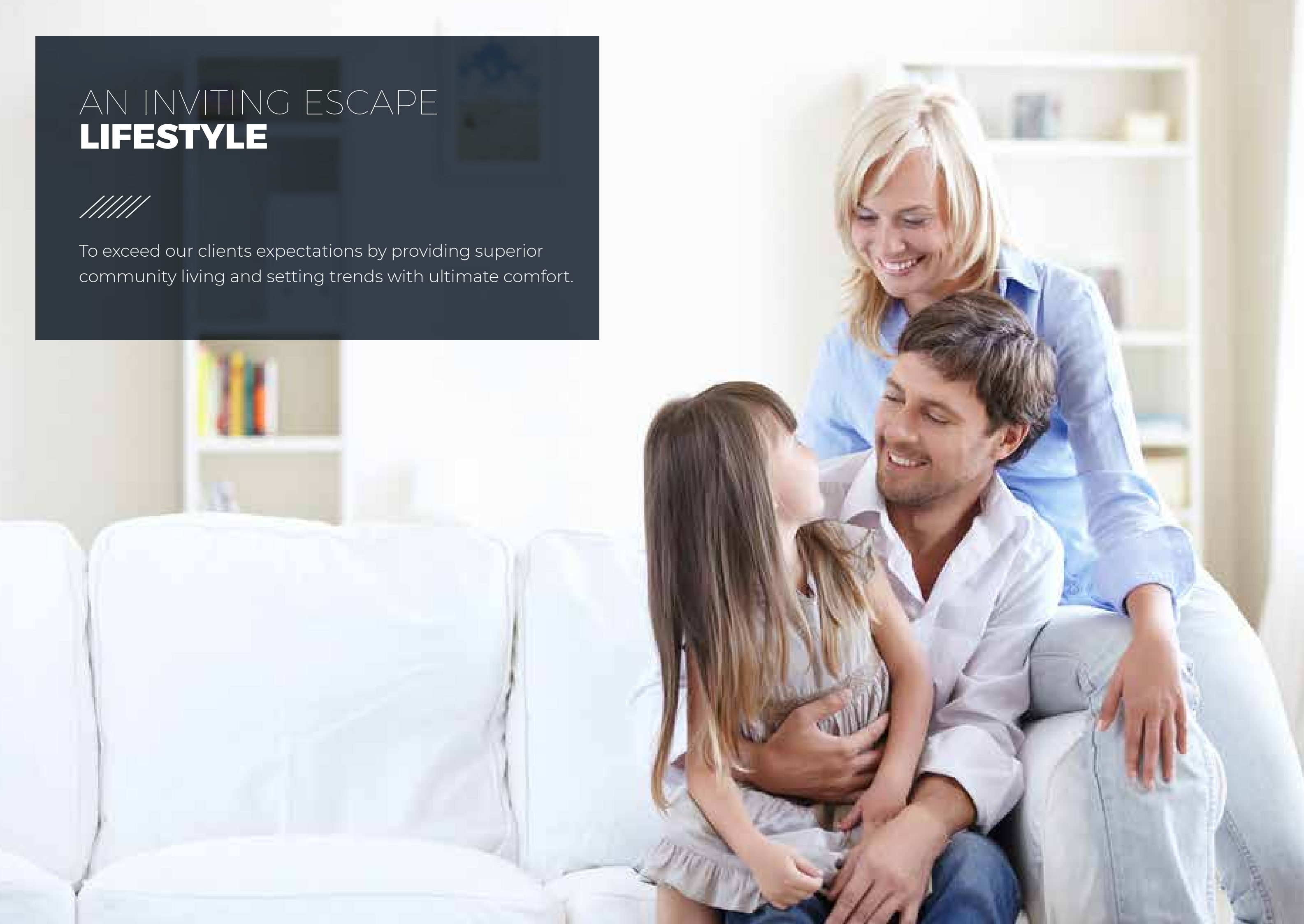
A design that imbibes elements of nature, spacious airy rooms and wider balconies. Marwa Heights comprises of one, two and three bedroom apartments.



AN INVITING ESCAPE **LIFESTYLE**



To exceed our clients expectations by providing superior community living and setting trends with ultimate comfort.





FACILITIES & AMENITIES



- ◈ Infinity pool
- ◈ Spacious lobby
- ◈ Luxurious rooftop amenities
- ◈ Multiple level of parking
- ◈ Retail areas on the ground floor
- ◈ Closed parking for each apartment





THE APARTMENTS



135
APARTMENTS

54
STUDIO

27
2 BEDROOM

36
1 BEDROOM

18
3 BEDROOM



LITTLE LUXURIES
THAT DEFINE YOUR ALCOVE.



NOT A HOME.

IT'S A UNIVERSE OF YOUR OWN.



FURNISHED

WITH BEAUTIFUL COUNTERTOPS.

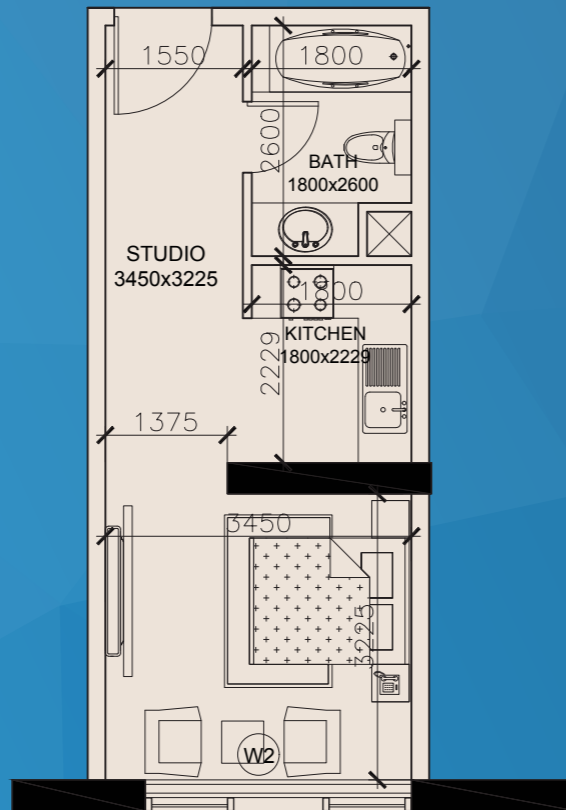
BLENDING SEAMLESSLY,
THE FINISHING TOUCH



THE APARTMENTS

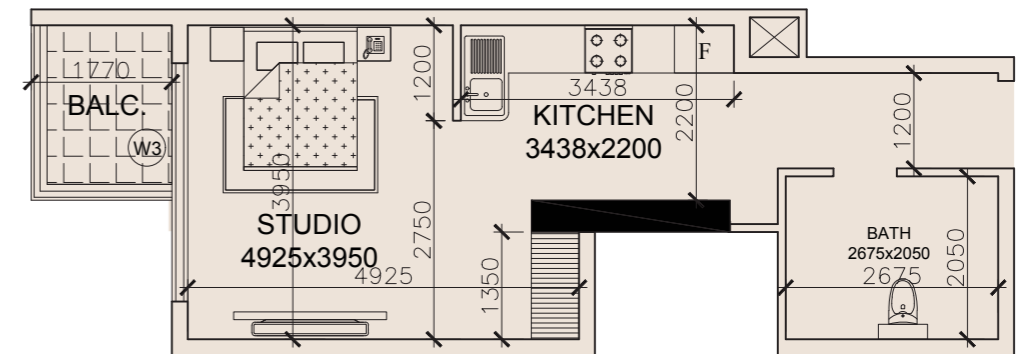


STUDIO



STUDIO-TYPE-"A"

NET AREA -	351.8 SQFT
BALCONY AREA -	0.0 SQFT
TOTAL AREA -	351.8 SQFT



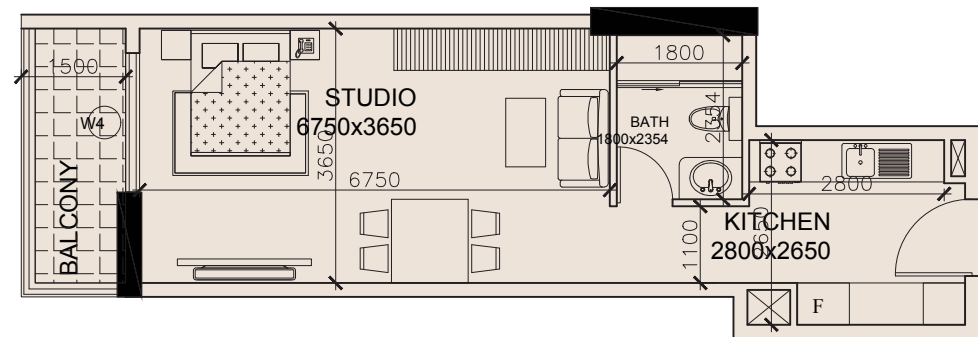
STUDIO -TYPE-"B"

NET AREA -	417.7 SQFT
BALCONY AREA -	43.8 SQFT
TOTAL AREA -	461.5 SQFT

THE APARTMENTS

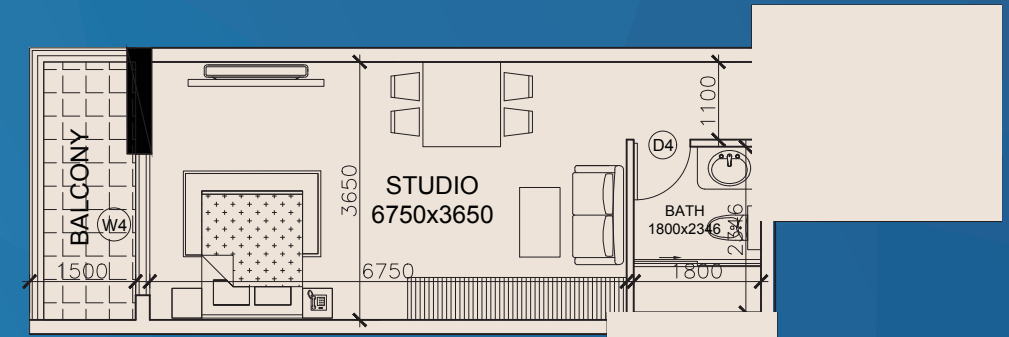


STUDIO



STUDIO -TYPE-"C"

NET AREA -	472.9 SQFT
BALCONY AREA -	65.7 SQFT
TOTAL AREA -	538.6 SQFT



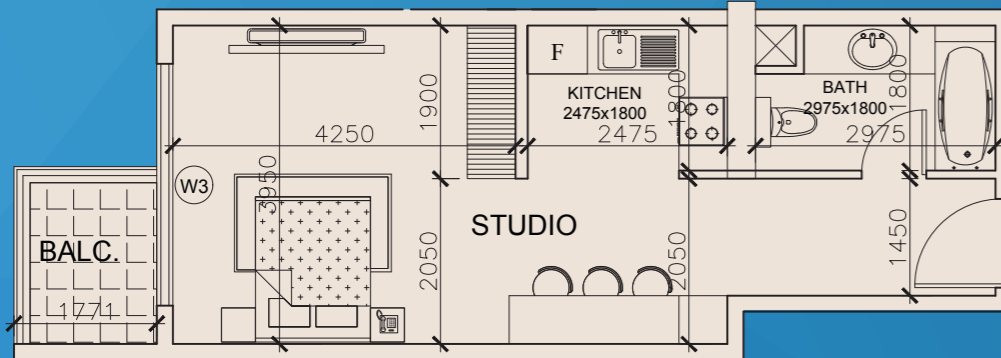
STUDIO -TYPE-"D"

NET AREA -	472.9 SQFT
BALCONY AREA -	65.7 SQFT
TOTAL AREA -	538.6 SQFT

THE APARTMENTS

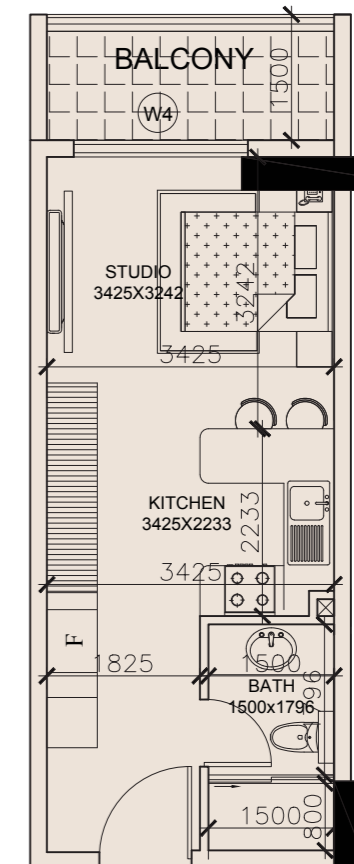


STUDIO



STUDIO-TYPE-"E"

NET AREA -	447.6 SQFT
BALCONY AREA -	43.8 SQFT
TOTAL AREA -	491.4 SQFT



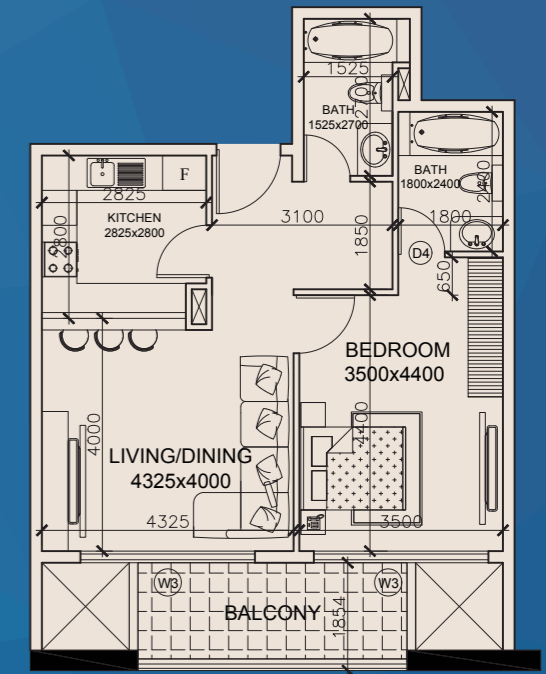
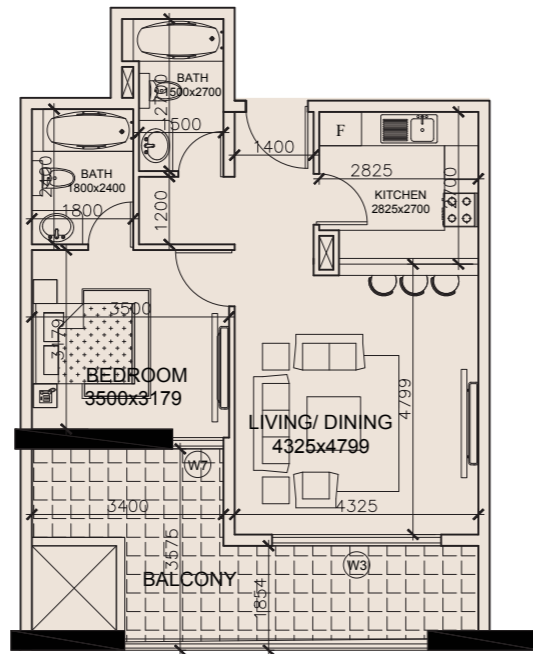
STUDIO-TYPE-"F"

NET AREA -	334.6 SQFT
BALCONY AREA -	60.1 SQFT
TOTAL AREA -	394.5 SQFT

THE APARTMENTS



1 BEDROOM



1 BHK -TYPE-"A"

NET AREA - 721.8 SQFT
BALCONY AREA - 130.2 SQFT
TOTAL AREA - 852.0 SQFT

1 BHK -TYPE-"B"

NET AREA - 688.4 SQFT
BALCONY AREA - 98.2 SQFT
TOTAL AREA - 786.5 SQFT

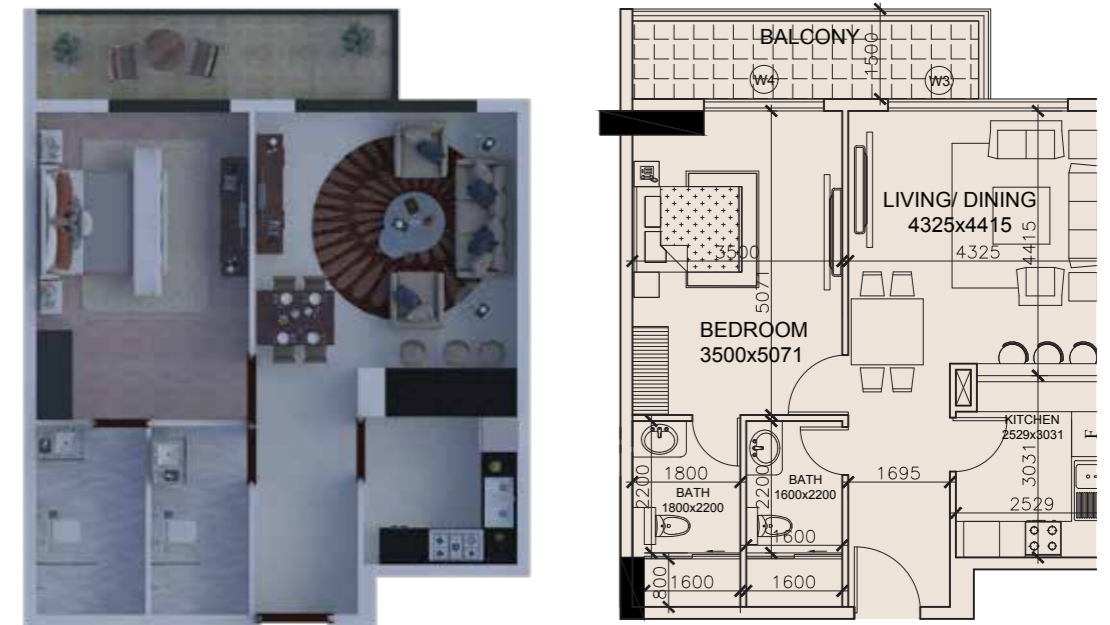
THE APARTMENTS

1 BEDROOM



1 BHK -TYPE-"C"

NET AREA - 646.7 SQFT
 BALCONY AREA - 88.0 SQFT
 TOTAL AREA - 734.7 SQFT



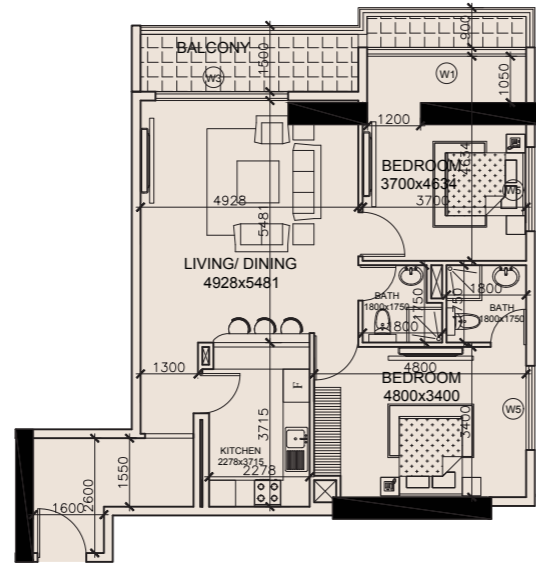
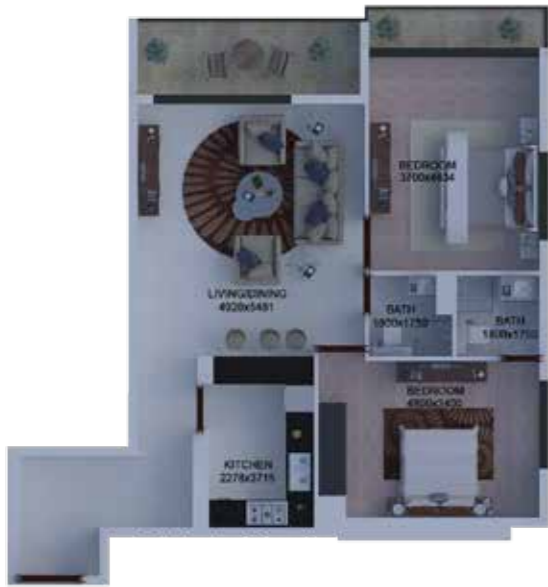
1 BHK -TYPE-"D"

NET AREA - 727.1 SQFT
 BALCONY AREA - 98.1 SQFT
 TOTAL AREA - 825.2 SQFT

THE APARTMENTS

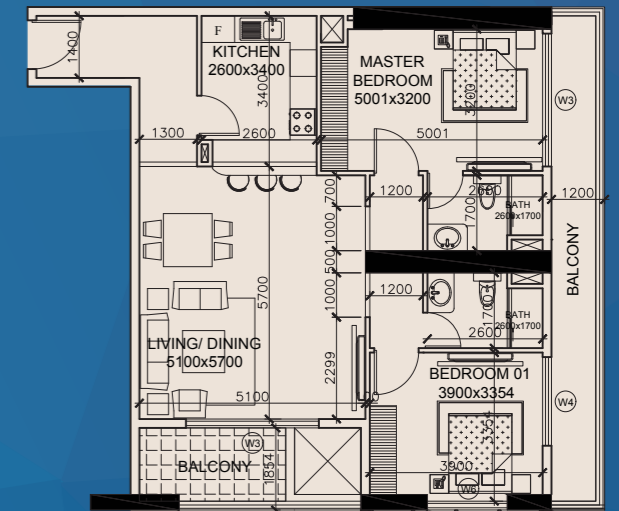
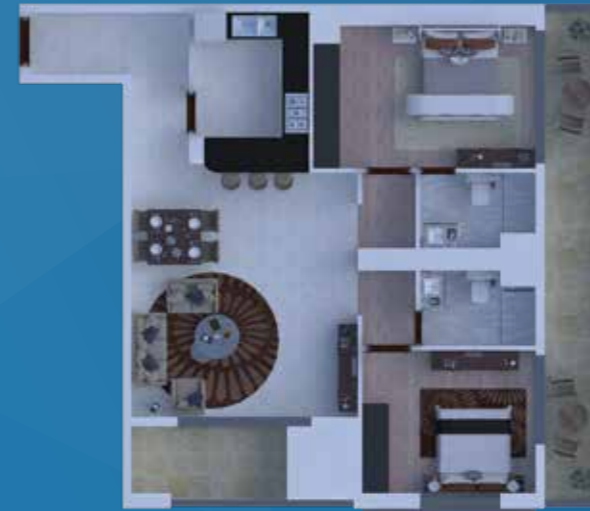


2 BEDROOMS



2 BHK -TYPE-"A"

NET AREA - 1034.2 SQFT
 BALCONY AREA - 121.6 SQFT
 TOTAL AREA - 1155.7 SQFT



2 BHK -TYPE-"B"

NET AREA - 1078.3 SQFT
 BALCONY AREA - 218.4 SQFT
 TOTAL AREA - 1296.7 SQFT

THE APARTMENTS

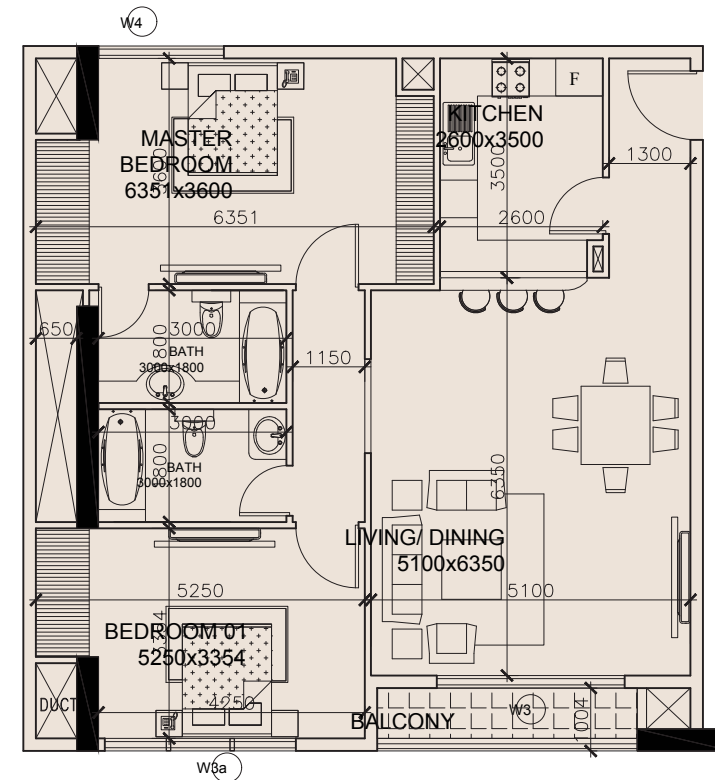


2 BEDROOMS



2 BHK -TYPE-"C"

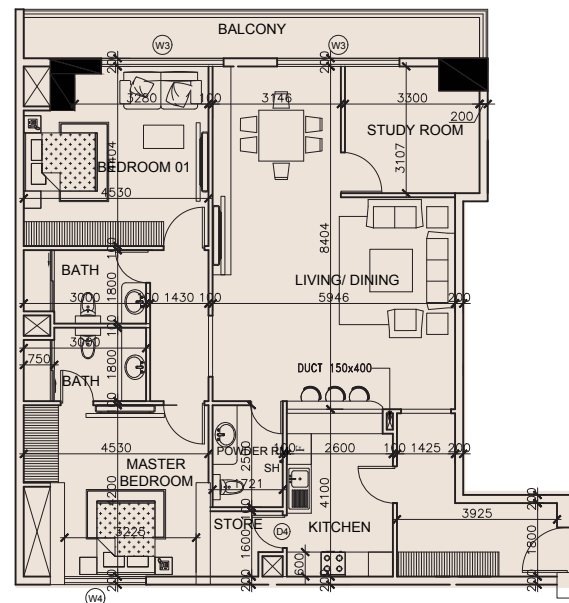
NET AREA - 1242.2SQFT
BALCONY AREA - 46.5 SQFT
TOTAL AREA - 1288.7 SQFT



THE APARTMENTS

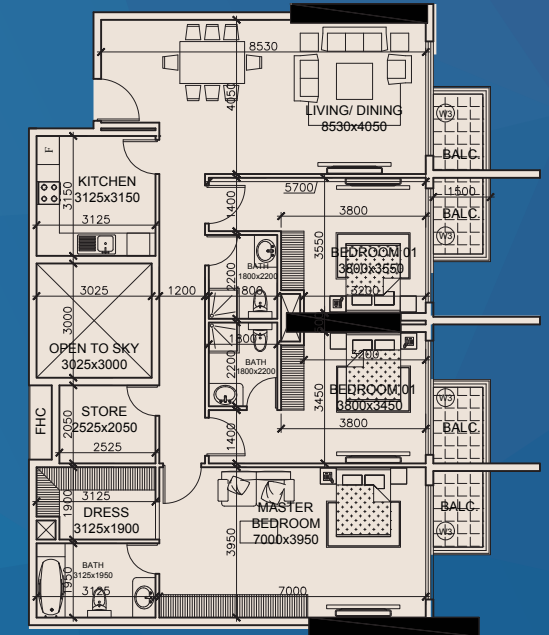


3 BEDROOMS



3 BHK -TYPE-"A"

NET AREA - 1587.2 SQFT
 BALCONY AREA - 149.5 SQFT
 TOTAL AREA - 1736.7 SQFT



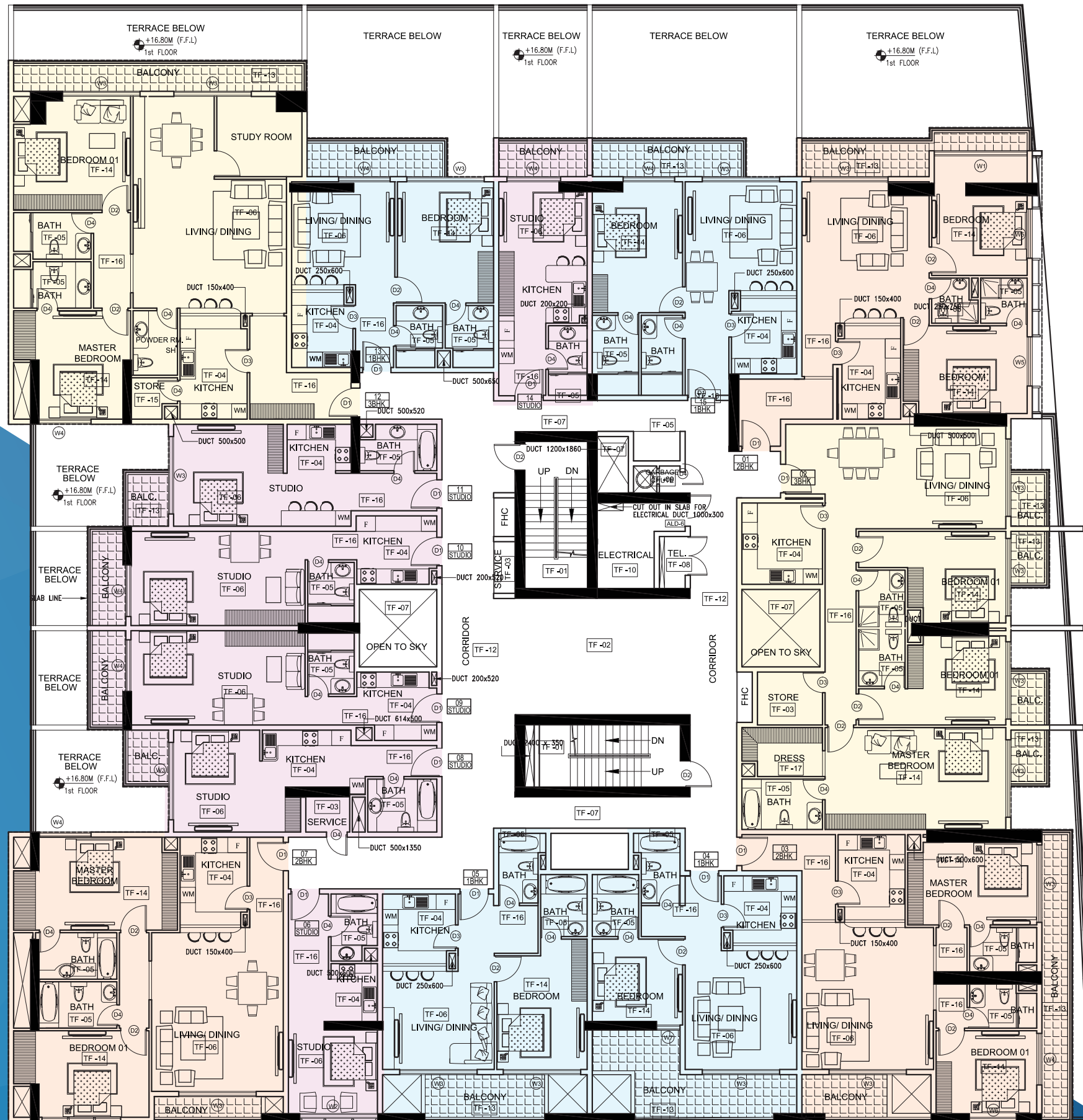
3 BHK -TYPE-"B"

NET AREA - 1630.2 SQFT
 BALCONY AREA - 148.5 SQFT
 TOTAL AREA - 1778.8 SQFT

ARCHITECTURAL FLOOR PLAN



- 3 BHK**
- 2 BHK**
- 1 BHK**
- STUDIO**





MARWA HEIGHTS

THIS IS LIVING, **THIS IS YOUR COMMUNITY**



JUMEIRAH VILLAGE CIRCLE AND TRIANGLE:

Jumeirah Village is a residential and commercial community featuring a mixture of Arabic and Mediterranean villas and stylish townhouses. Covering two distinct areas - the Triangle and the Circle - Jumeirah Village comprises a variety of residences, offices, commercial, retail, and leisure facilities, spread over 811 hectares. Jumeirah Village offers residents a real sense of community living. Coming soon to Jumeirah Village are two new Nakheel retail developments: Al Khail Avenue at Jumeirah Village Triangle and The Circle Mall at Jumeirah Village Circle.

THE CIRCLE MALL

The Circle Mall at Jumeirah Village Circle, covering one million sq ft, will have 200 shops, an anchor supermarket, two department stores, a multi-screen cinema and a variety of dining outlets including a food court. Strategically located between Sheikh Mohammed Bin Zayed Road, Al Khail Road and Hessa Street, The Circle Mall will serve hundreds of thousands of people living in Jumeirah Village and surrounding areas, and act as a new leisure destination for residents and tourists across the rest of Dubai.

AL KHAIL AVENUE

Al Khail Avenue at Jumeirah Village Triangle, located alongside Dubai's Al Khail Road, is a 3.6 million square foot retail, dining and entertainment hub with 350 shops, a multi-screen cinema and a diverse range of cafes and restaurants – some with outdoor dining areas. There will also be a multi-storey car park with 4,400 spaces. Al Khail Avenue will provide convenient, on-the-doorstep shopping and entertainment for people in Jumeirah Village, Jumeirah Park and other nearby communities, and a new destination for the residents and tourists across Dubai and the other emirates.



05

MINUTES

NEAREST HOSPITAL



05

MINUTES

NEAREST SCHOOL



12

MINUTES

EMIRATES GOLF CLUB



15

MINUTES

BURJ KALIFA



15

MINUTES

BURJ AL ARAB



18

MINUTES

PALM JUMEIRAH



18

MINUTES

MALL OF THE EMIRATES



25

MINUTES

NEAREST AIRPORT

COMPLETED PROJECTS



MARWA HOMES

JUMEIRAH VILLAGE CIRCLE, DUBAI



14

TOWNHOUSE

04

BEDROOMS

WITH MITSUBISHI HOME ELEVATOR

MARWA HOMES 2

JUMEIRAH VILLAGE CIRCLE, DUBAI



16

TOWNHOUSE

04

BEDROOMS

WITH MITSUBISHI HOME ELEVATOR

UPCOMING PROJECTS



MARWA HOMES 3

JUMEIRAH VILLAGE CIRCLE, DUBAI



14
TOWNHOUSE

04
BEDROOMS

WITH MITSUBISHI HOME ELEVATOR

MARWA HOMES 4

JUMEIRAH VILLAGE CIRCLE, DUBAI



12
TOWNHOUSE

04
BEDROOMS

WITH MITSUBISHI HOME ELEVATOR

UPCOMING PROJECTS



MARWA VIEWS

JUMEIRAH VILLAGE CIRCLE, DUBAI



Residential Building with Riverpool.