

ONE SANKARI

PRE-LAUNCH SALES PRESENTATION



SANKARI

PROJECT REGISTRATION NO. 1696

SANKARI

LIFE. ILLUMINATED.

Life. Illuminated.

We are exceptional. We are remarkable. And we deliver on our promise.

What sets us apart is our vision, our team and our resources.

We have a clear vision – one of no compromise and delivering on our promise. Sankari Properties is a legacy business, and our reputation is our pride.

Sankari is a collection of dedicated expert-professionals across all disciplines with strong track record in real estate. They are brought together by their passion to out-perform themselves.

Most importantly, where we thrive is that our projects are fully-funded. This gives us independence and ability to push the limits when it comes to quality of construction and time.

Mohammed Sankari
Chairman

Dr. Abdulkader Al Sankari
Founder



SANKARI PROPERTIES

From the pioneering spirit of the Sankari Family, creators of the iconic Paris Group, emerges Sankari Properties. With a legacy rooted in introducing a new approach to retail in the UAE in 1983, the group has grown to become one of the largest retail conglomerates in the region.

Now, Sankari Properties opens a new chapter, translating the family's commitment to excellence, integrity, and innovation into the realm of real estate.

At the heart of Sankari Properties is a team of experts, carefully handpicked to redefine real estate in the UAE. These industry luminaries, drawn from various disciplines, embody the linchpins of excellence. With their collective expertise, they are poised to create a legacy of distinction.

With our passionate team dedicated to surpassing expectations, we are reshaping the future, one remarkable property at a time.

SANKARI PROPERTIES TEAM



Led by the visionary and dynamic CEO, Mark Phoenix, Sankari Properties drives the transformation of the real estate sector in the UAE. He has gathered a team of experts who excel in their respective disciplines and are driving the vision of Sankari Properties.

MARK PHOENIX
CEO



MICHAEL TRIGG
DEVELOPMENT
DIRECTOR



JOSEPH PENSON
PROJECT DIRECTOR



**LILIANA
MOMCILOVIC**
DESIGN DIRECTOR



ANNA CHEUNG
SALES DIRECTOR



MEENAKSHI K
MARKETING
DIRECTOR



MONICA PUKALL
LEGAL DIRECTOR



FLAGSHIP PROJECT

As our first project, we wanted to make a statement – we are here to lead, not follow.

Our first and flagship project is located on the most prominent plot on Marasi Marina, that strategically overlooks Downtown Dubai and Dubai Creek.

Designed by Foster + Partners, this twin tower development boasts an exclusive collection of full- floor residences, everyone with a private swimming pool and truly expansive outdoor living spaces.

The cascading architectural design is conceived with opulent living in mind, with each and every home enjoying majestic views along the water towards the downtown city skyline.

Interior Designer, Portia Fox, has been handpicked to curate the living spaces where she brings her brings her experience in working with exclusive and expansive properties.



DESIGN PARTNERS

ARCHITECTURE
FOSTER + PARTNERS



INTERIOR DESIGN
PORTIA FOX





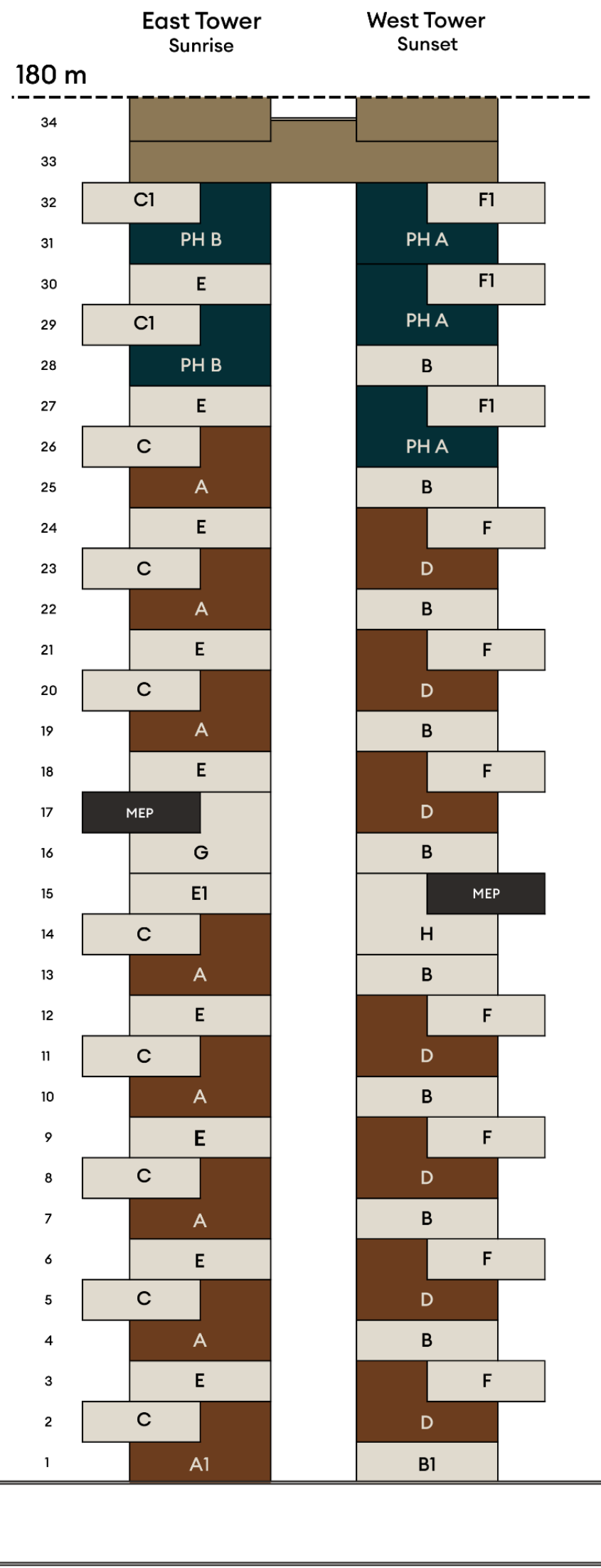
**SOARING 180M IN THE SKY, THIS
TWIN TOWER DEVELOPMENT
WILL HAVE THE MOST
STUNNING VIEWS IN THE
NEIGHBOURHOOD**

LOCATION





UPLIFTING A
NEIGHBOURHOOD
FULLY DESIGNED BY
FOSTER + PARTNERS



UNIT MIX

Residence Type	No. of Residences	Areas (SQ. FT.)	Areas (SQ. MT.)
3 Bedroom Residences	42	7,000 – 8,300	650 - 771
4 Bedroom Residences	15	9,250 – 9,500	860 - 882
5 Bedroom Residences	5	10,500	975
Ultra-Penthouse	1	32,000	3,000

Residence Features:

- Luxury Materials & Finishes
- Minimum 3.5m Ceiling Height to Living Areas
- Oversized Outdoor Living Areas
- Every Residence has a Private Swimming Pool

- Private Jacuzzi
- Oversized Parking Spaces
- Private Garages for Select Units







GROUND FLOOR



- Retail
- Cinema
- Outdoor Training
- Gym
- Lap Pool
- Staff
- Kids Room
- Golf Simulator
- Club House
- Tennis Court
- Padel Court
- Floating Villa Lobby

E=495375
N=278677

PODIUM 1 FLOOR

Cigar Lounge

Lounge + Meeting
Rooms

Private Dining

Entrance Lobby

Staff

Office

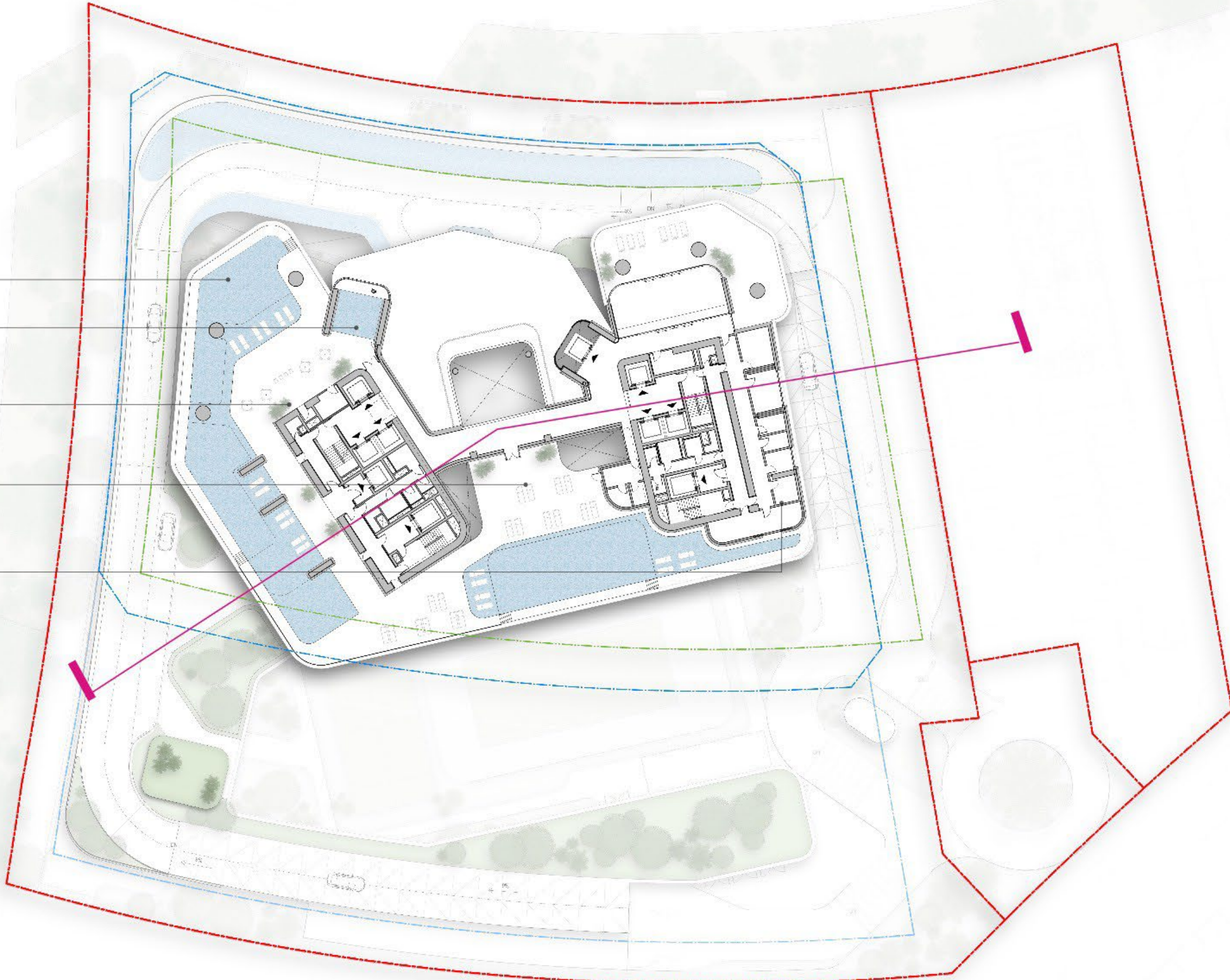
PH Lobby

Villa Drop-off



PODIUM 2 FLOOR

- Infinity Pool
- Jacuzzi
- Pool Bar
- Sun Terrace
- SPA



ABUNDANT AMENITIES WITH EXCLUSIVE ACCESS FOR RESIDENTS

GROUND FLOOR

Fitness Center/ Gym

Yoga and Pilates Studio

Outdoor Training Area

Golf Simulation Room

Indoor Lap Pool

Children's Play Room

Large Cinema Room

Gaming Room

Tennis & Padel Courts

PODIUM LEVEL 1

Private Dining Room

Cigar and Whiskey Lounge

Wine Cellar Board room

Business Lounge

Meeting Rooms

PODIUM LEVEL 2

Large Swimming Pool

Health and Wellbeing Spa

Salon

Terrace Lounge









MANAGED BY A 5-STAR HOTEL OPERATOR

THE SERVICES

24-hour Concierge Services

Valet Services

Housekeeping Services

24-hour Doorman and Security

Business Support Services Digital Key for

Apartment Dedicated Mobile Phone App

Automated Parking Entry for Residents Remote Call

Function for Elevators

A SNEAK PEEK OF THE INTERIOR DESIGN

- PORTIA FOX DESIGN













SANKARI

LIFE. ILLUMINATED.

THANK YOU

Disclaimer: The images, impressions, and representations in this brochure, including without limitation, exterior and interior decorations, artworks, materials, finishes, appliances, and furnishings, are artistically inspired solely for illustration purposes. This brochure is for marketing use only, and nothing in this brochure or in any other marketing or accompanying documentation or in any communications, whether written or oral, constitutes a promise, legal representation, or warranty by the seller in respect of One Sankari or any residences. Purchases are governed strictly by, and are subject to, contract terms. For certainty, the seller reserves the right to substitute materials, finishes, appliances, and other furnishings, without notice, for those of equal or higher quality (as determined by the seller), and all drawing features, fixtures, amenities, layouts, areas, dimensions, and other construction and design details may be revised at any time without notice. Stated areas may not indicate usable areas, and drawings are not to scale and may not reflect accurate areas or proportions.