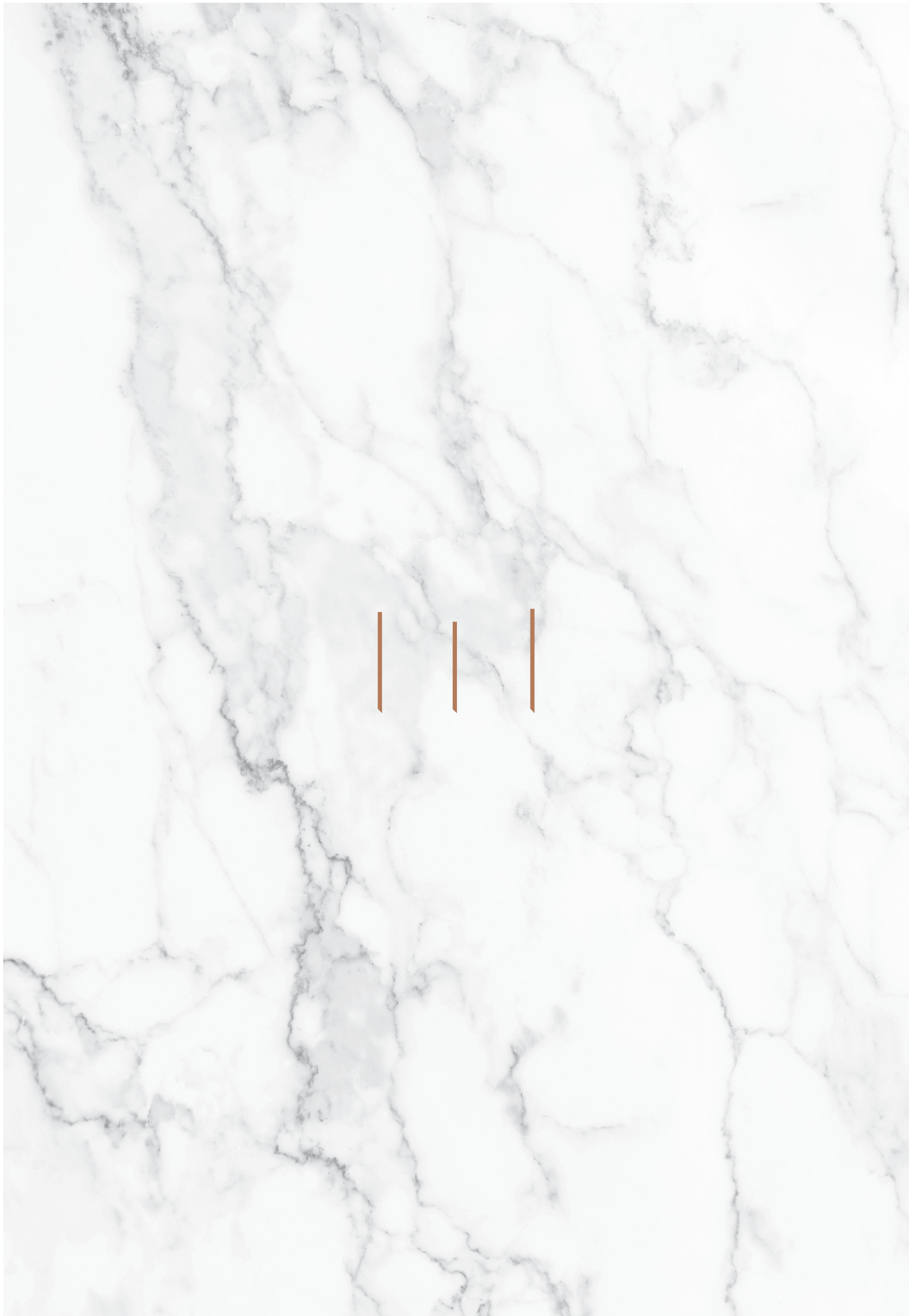




|||

OXFORD
212





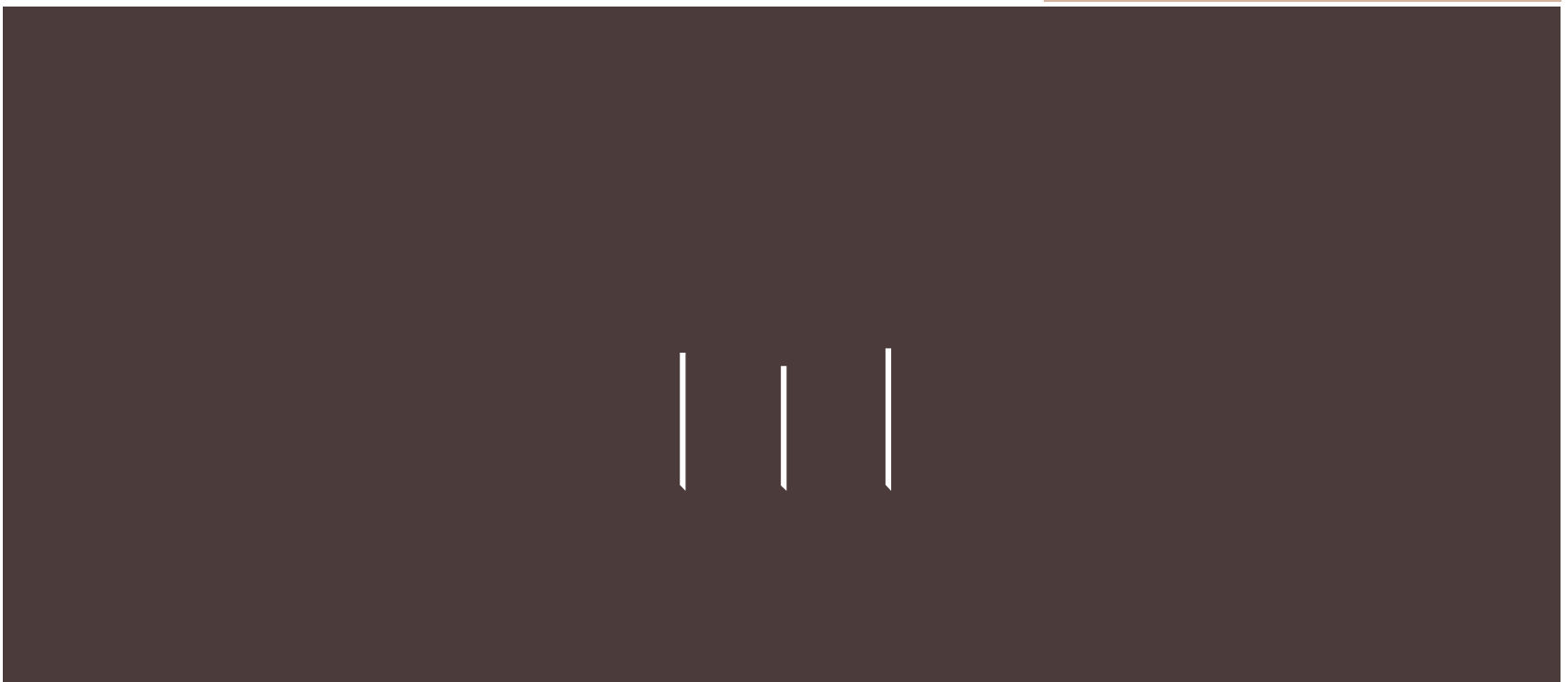




|||

"Luxury
is in each
detail."

-Hubert de Givenchy



Iman Developers

Established in 2016, Iman Developers was born out of pure ambition. In the pursuit of perfection, each residence, from the ground up, is a unique work of art. A combination of time-honored designs, cutting-edge technology, and international safety practices are employed to create homes that exceed the expectations of the clients. We strive to deliver not just a residence but a complete lifestyle.

We aspire to create a state-of-the-art living space that is luxurious and comfortable and worthy of being the perfect home.

Our comprehensive lifestyle guarantees the quality of your life. Our philosophy is to create not just empty spaces but blissful homes.

Your safety is our utmost priority which is ensured through our hazard control experts involved in the development of your luxurious haven. We do realize our commitment towards you hence we strive to make your journey free of discomfort.



Our projects



HANDOVER

2017

NUMBER OF UNITS

12 villas



HANDOVER

2018

NUMBER OF UNITS

103
apartments



OXFORD II
RESIDENCE

HANDOVER

2020

NUMBER OF UNITS

147
apartments



HANDOVER


2021

NUMBER OF UNITS

131
apartments

An aerial photograph of Dubai, United Arab Emirates, taken at dusk. The image shows a dense urban landscape with numerous skyscrapers and modern buildings. In the foreground, a complex multi-level highway interchange is visible, with several lanes of traffic. The sky is a deep, dark blue, and the city lights are beginning to glow. The overall atmosphere is one of a bustling, modern metropolis.

|||
**Dubai. An
unforgettable
destination for
cosmopolitan
living**

An aerial photograph of Dubai, United Arab Emirates, featuring the Burj Khalifa on the left, a complex highway interchange in the foreground, and a dense city skyline under a cloudy sky. A semi-transparent dark box is overlaid in the center, containing text.

One of the seven emirates that make up the United Arab Emirates, Dubai is home to nearly 200 nationalities and offers a truly memorable experience to all visitors. Whether it is by the banks of the Creek, or at the top of the Burj Khalifa - the world's tallest building, Dubai lives and breathes a sense of possibility and innovation. And with an unparalleled coastline, beautiful desert, and magnificent cityscapes, memories are just waiting to be made here.





'Home
isn't
a place,
It's a
feeling.'

-Cecilia Ahern



Centrally located



12 km

MALL OF THE
EMIRATES



16 km

PALM
JUMEIRAH



26 km

DUBAI
AIRPORT (DXB)



22 km

BURJ
KHALIFA



19 km

DUBAI
EXPO

Jumeirah Village Circle

Jumeirah Village Circle, situated in the heart of new Dubai, offers its residents with amenities required for a luxurious lifestyle in a tranquil setting.

Jumeirah Village Circle creates a sense of community, bringing contemporary facilities and amenities to a peaceful setting.

Situated along the Mohamed bin Zayed Road, JVC is in close proximity to Sports City, Arabian Ranches, Mall of the Emirates, and the Dubai World Central Airport. Parks, schools, shops, eateries, and other necessities promote convenient and self-contained living.

In addition to its convenient location to the largest international airport in the world, Jumeirah Village Circle offers significant opportunities for commerce as well. There are several neighboring communities including Motorcity, Emirates Hills, and Jumeirah Village Triangle.



Clinics & Hospitals



Hotels & hotel apartments



Malls and groceries



Schools & playschools



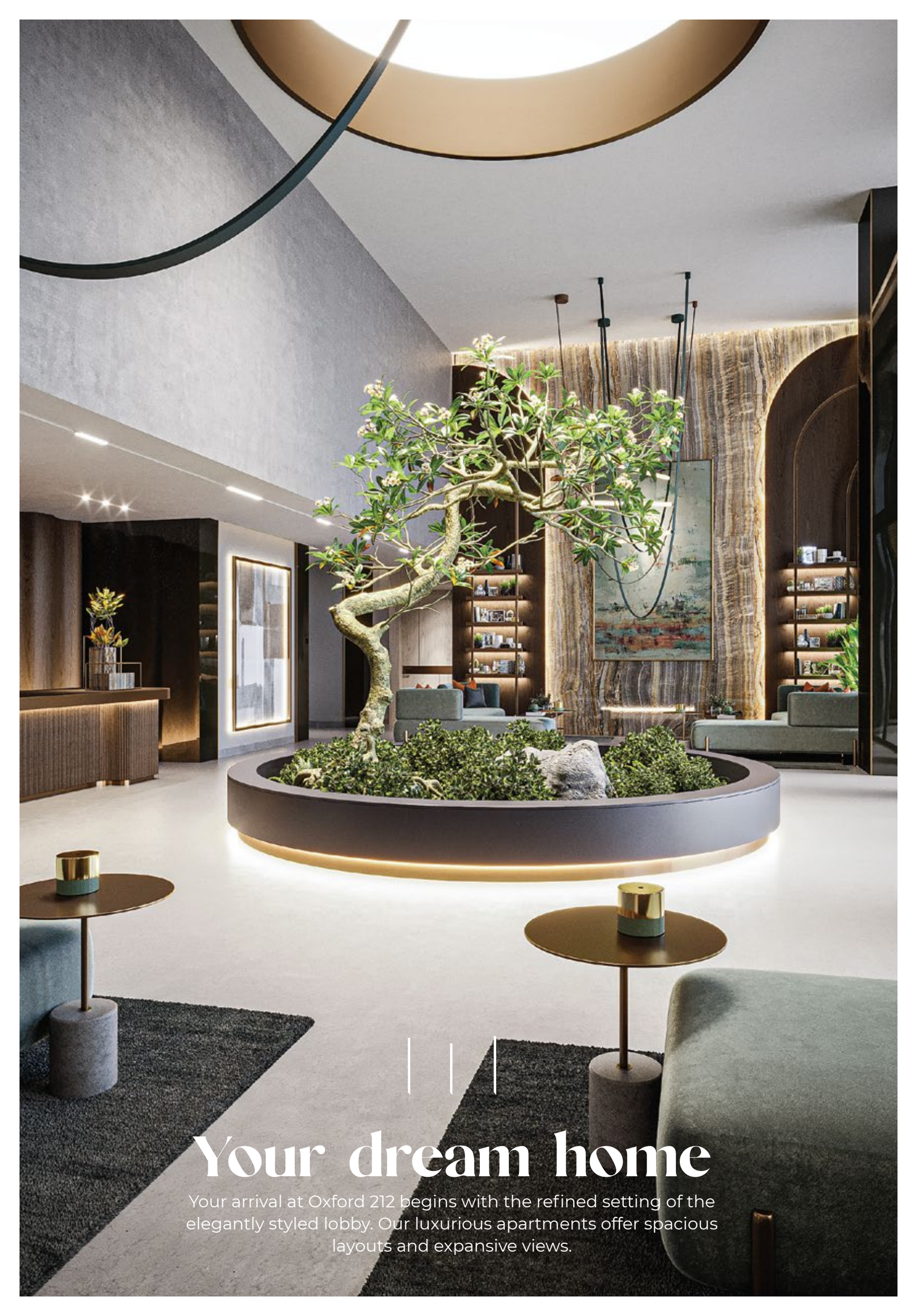
Parks & recreation







|||
OXFORD
212



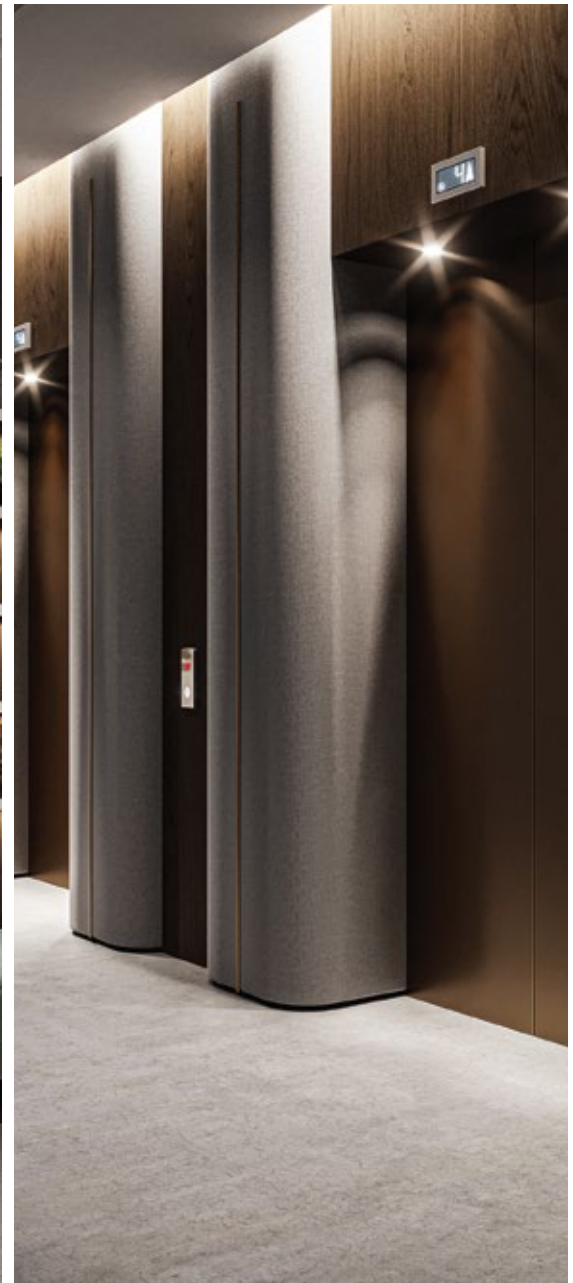
Your dream home

Your arrival at Oxford 212 begins with the refined setting of the elegantly styled lobby. Our luxurious apartments offer spacious layouts and expansive views.



Walk into luxury as the double height lobby spells elegance in every aspect.

Oxford 212 focuses on affordable luxury providing high-end finishes to our clients along with green open spaces, luxurious resort-style pool, kids play area, rooftop barbeque, plunge pools, double-height spacious lobby, gym with branded equipment, and smart homes.





Your home redefined

Oxford 212 is luxury living reinvented for the modern family. With attention to detail and exquisite materials, Oxford 212 will make your home - a paradise.

Oxford 212 radiates luxury in every corner of your home. Every room is planned keeping you and your family in mind. Careful attention has been given to the kitchen, bathrooms and storage areas. The bedrooms are airy with a sense of luxury and comfort making it a place you will wake up smiling.

Oxford 212 embodies a sense of premium living with opulence in every material. Welcome to your new address.



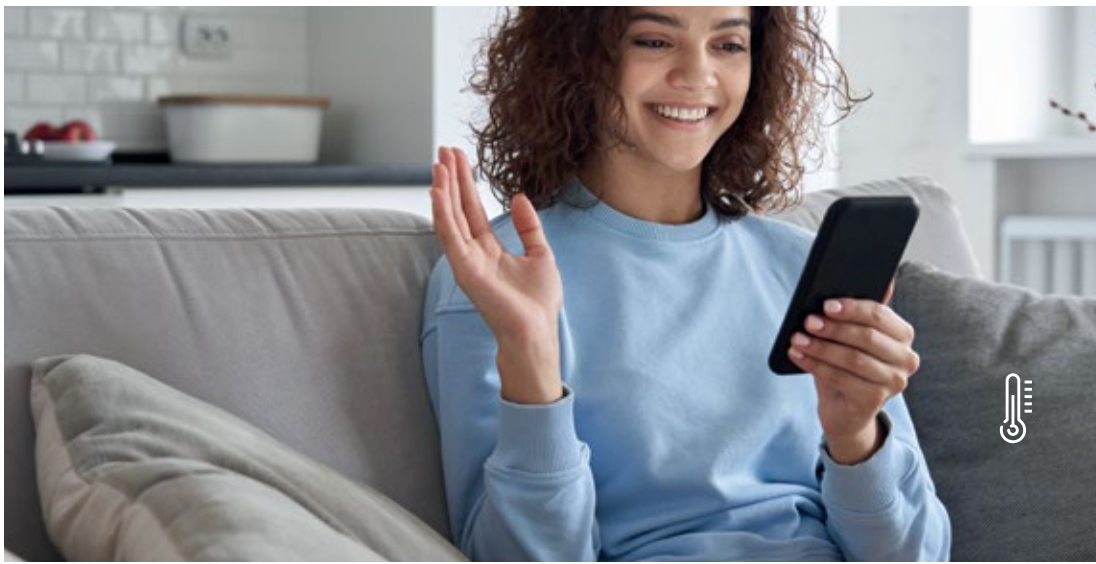


The smart way to live

Oxford 212 has dedicated smart spaces & amenities that define the project's focus on a smart lifestyle.



The building is equipped with a climate-controlled swimming pool and green spaces for yoga and relaxation. Our smart living facility allows you to experience intuitive home automation every day with a state-of-the-art plan.



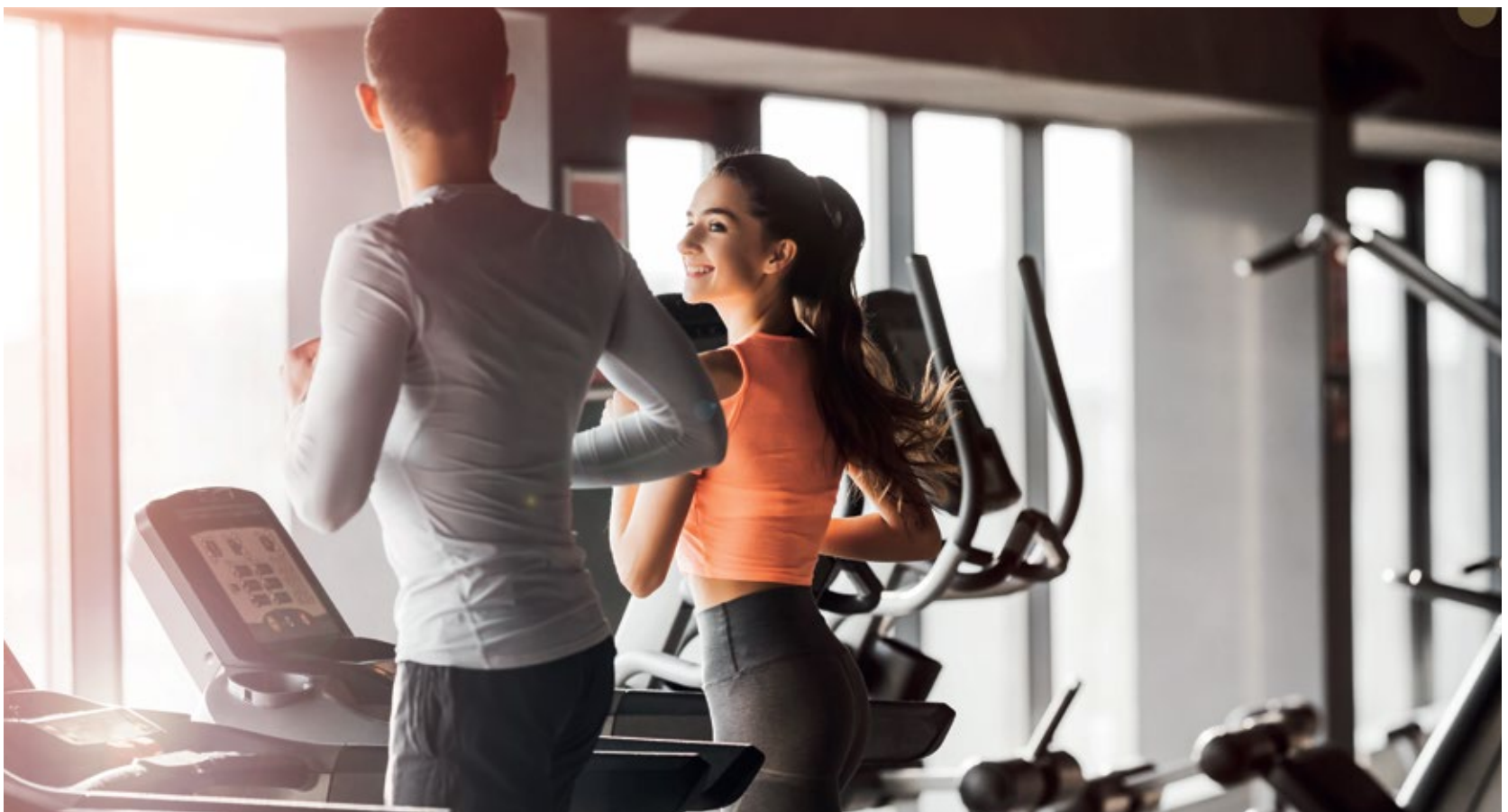
The building features intuitive smart lighting where you can create an aura by just brushing a switch. The smart shutters installed, enable ease and convenience for your everyday life as everything is at your fingertips and you can take control any time. With an intelligent eco cooling system in place, you can visualize your energy consumption and optimize what is necessary for green-living and creating an eco-friendly environment.



Resort style majestic pool









Fully equipped gym







**Majestic
pool**



**Rooftop
outdoor
cinema**



**Children's
play area**



**Rooftop
pool &
Barbecue
area**



Unwind, relax
and enjoy.

Amenities Plan

LEVEL ONE

- A** ADULT'S POOL AREA
- B** CABANA AND DECKS
- C** GARDEN AREA
- D** GYM
- E** LIFT LOBBY

ROOFTOP AREA

- F** BARBECUE AREA
- G** ROOFTOP POOL
- H** OUTDOOR CHILDREN'S PLAY AREA
- I** ROOFTOP OUTDOOR CINEMA





|||
OXFORD
212



The background is a light-colored marble with intricate, dark grey and black veins. Centered on this background is a logo consisting of the word "IMAN" in a dark green, serif font. Above the letter "I" are three horizontal lines of varying lengths, stacked vertically. Below "IMAN" is the word "DEVELOPERS" in a smaller, dark green, sans-serif font.

IMAN
DEVELOPERS