



PARK LANE

By Heilbronn

**HEILBRONN**

PROPERTIES

Lifestyle Stories



A person wearing a cap and jacket is sitting on a grassy hill, looking out over a vast, forested valley. A bicycle is parked on the grass to the right. The scene is framed by tree branches in the foreground, and the background shows a dense forest of trees with some autumnal colors. The overall atmosphere is peaceful and scenic.

WELCOME TO  
**PARK LANE**  
RESIDENCES

Lifestyle Stories



# WELCOME TO PARK LANE

## AN INVITATION TO UNPARALLELED ELEGANCE

Nestled in the vibrant Jumeirah Village Circle, Park Lane emerges as a sanctuary of luxury and comfort. This seven-story marvel, brought to life by Heilbronn developers, represents the epitome of refined living in Dubai. With a commitment to meticulous design and quality, Park Lane is not just a residence but a lifestyle destination for those who seek exclusivity.

**Prestigious Location:** Situated in the heart of Jumeirah Village Circle, offering a harmonious blend of urban energy and suburban tranquility.

**Diverse Living Spaces:** A selection of studios to three-bedroom apartments designed for modern living.

**Anticipated Arrival:** Promising to be a beacon of sophistication, with completion expected in Q4-2024.



## THE HEART OF NEW DUBAI

### A COMMUNITY LIKE NO OTHER

Jumeirah Village Circle stands as a testament to Dubai's vision of a community that embodies a holistic lifestyle. With its blend of urban convenience and green landscapes, JVC offers a dynamic setting that caters to all aspects of modern living.

Living in Harmony

- JVC's family-friendly environment and cultural diversity make it a vibrant place to live.
- Its strategic location ensures easy access to Dubai's major attractions and business hubs.

Community of

**NAKHEEL**

# PERFECTLY LOCATED

## A TRULLY CENTRAL LOCATION

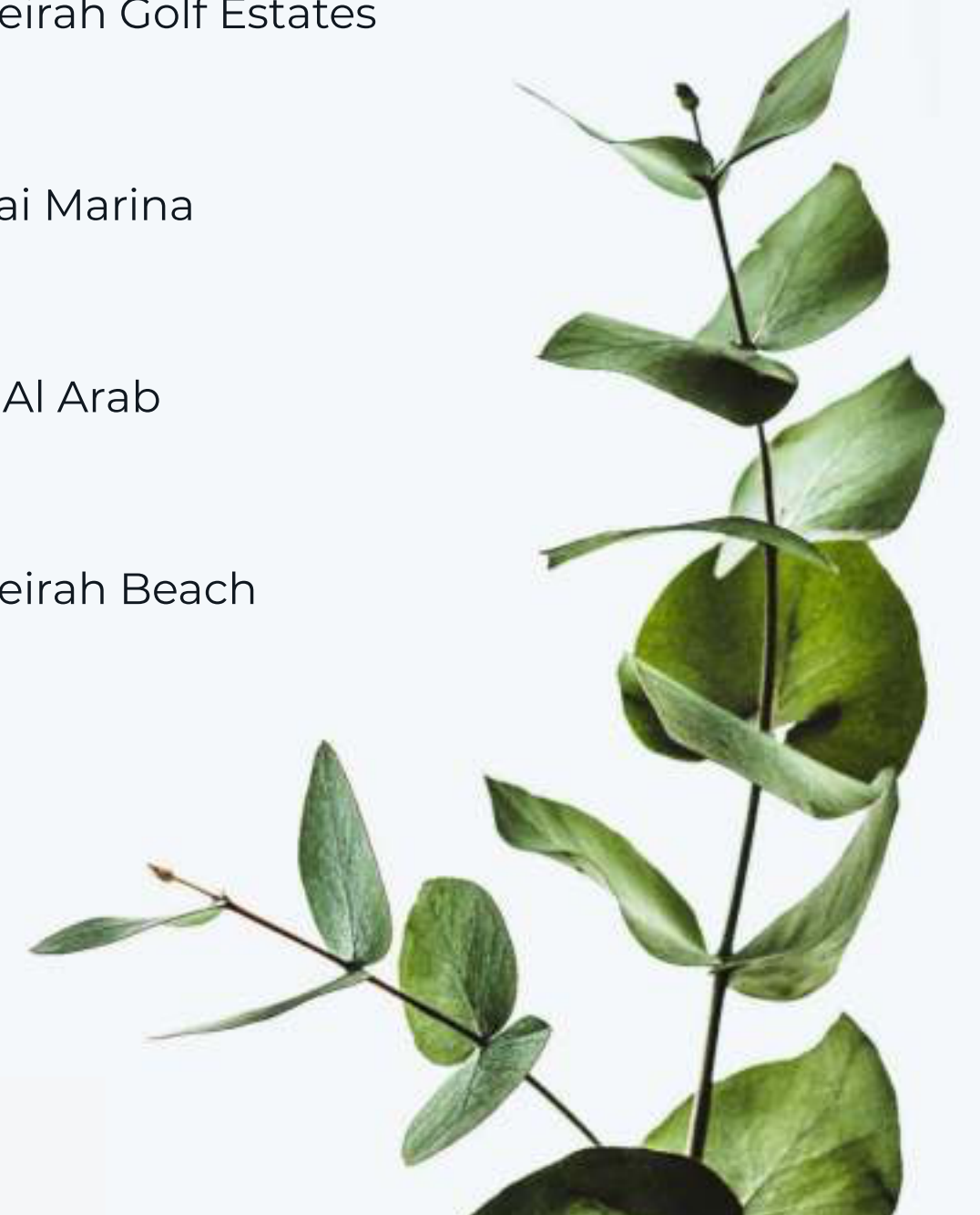
Park Lane is strategically positioned within JVC, ensuring residents enjoy both the serenity of suburban living and the conveniences of city life. Its proximity to essential destinations like malls, schools, and parks underscores Park Lane's appeal as an ideal home base.

The Crossroads of Convenience and Tranquility



- 03 MINUTES | Five Jumeirah Village Circle
- 07 MINUTES | Circle Mall
- 12 MINUTES | Dubai Hills Mall
- 15 MINUTES | Dubai Hills Golf Club
- 19 MINUTES | Mall of The Emirates
- 21 MINUTES | Nakheel Mall

- 19 MINUTES | Business Bay
- 19 MINUTES | Jumeirah Golf Estates
- 21 MINUTES | Dubai Marina
- 21 MINUTES | Burj Al Arab
- 21 MINUTES | Jumeirah Beach



# LIFESTYLE AND COMMUNITY LIVING

## ENVISIONING A VIBRANT LIFESTYLE

Park Lane is designed to foster a vibrant community life, where luxury amenities meet the warmth of a close-knit community. The development boasts a large swimming pool, a Padel Tennis court, and a dedicated yoga area, ensuring every day is filled with activities.

### Embracing Community Spirit

The ethos of Park Lane revolves around creating a lively and engaging community. From family gatherings in the rooftop garden to serene moments in the yoga and meditation areas, Park Lane provides diverse spaces for social and personal enrichment.





## ARCHITECTURAL EXCELLENCE

SINCE 2002

Founded in 2002, Heilbron has played a pivotal role in numerous prestigious construction projects across Dubai. The company specializes in the development of high-end luxury properties, particularly catering to billionaires' residences and mansions. Heilbron has established a strong presence by closely collaborating with VVIP clientele within and beyond the UAE. Heilbron's success is emblematic of Dubai's visionary progress under the wise leadership of His Highness Sheikh Mohammed Bin Rashid Al Maktoum, with the company's 22-year track record solidifying its standing as a leading luxury developer in the region. Heilbron has earned a reputation as one of the leading luxury developers in Dubai, supported by a robust financial foundation. Noteworthy projects include developments in Palm Island, Emirates Hills, Jebel Ali, Jumeirah Beach, JVC, Jumeirah Golf Estates, and Nad Al Sheba, among others.

**HEILBRONN**  
PROPERTIES  
Lifestyle Stories



# A REFLECTION OF METICULOUS PLANNING

Park Lane stands as a symbol of architectural excellence, with a modern facade that gracefully incorporates natural elements. The development's focus on quality materials and brands reflects its commitment to luxury and durability.



Schindler





## THE APARTMENTS

### DESIGNED FOR MODERN LIFESTYLES

The apartments at Park Lane are crafted with versatility and elegance in mind, offering a range of layouts from studios to three-bedroom units. Each space is designed to adapt to the evolving needs of its residents, providing a perfect backdrop for every phase of life.

### INFUSED WITH ELEGANCE AND COMFORT

Attention to detail is evident in every apartment at Park Lane, from the infusion of natural light and fresh air to the spacious rooms and modern kitchens. These features, combined with luxurious finishes, ensure a lifestyle of unparalleled comfort and sophistication.



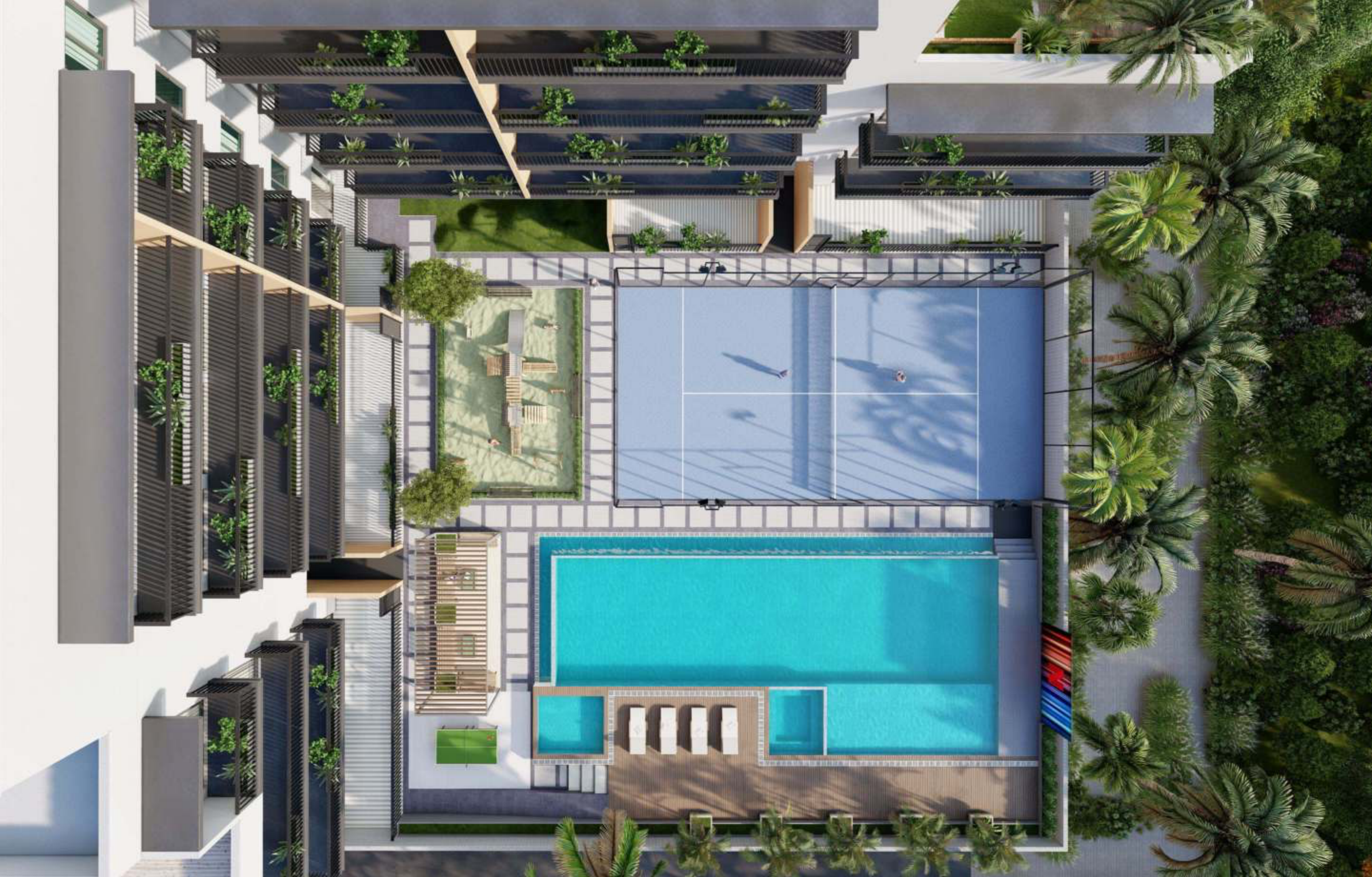
HEILBRONN



## SPACES FOR REJUVENATION AND SOCIALIZING

The development offers a myriad of spaces designed for personal wellness and social interaction, ensuring residents have ample opportunities to relax, exercise, and connect with neighbors.





## FITNESS, FUN, AND LEISURE

### A HAVEN OF WELLNESS AND ENJOYMENT

Park Lane is dedicated to providing a holistic lifestyle with amenities that cater to fitness, relaxation, and community engagement. From the panoramic fitness studio to the infinity pool and children's play area, there's something for everyone.

