

RESIDENCE 6 G+6

WATER HAS A NEW FRONT



MOHAMMED BIN RASHID
AL MAKTOUM CITY
DISTRICT ONE





District One Residences is a gated community, adorned with a glistening Crystal Lagoon and plush greenery. Right from spacious dwellings marked by aesthetic minimalism and smart functionality, our water-front apartments are bathed in natural light and imbue the charm of high-end, tranquil living.

THE ICONIC CRYSTAL LAGOON



THE ICONIC CRYSTAL LAGOON



THE ICONIC CRYSTAL LAGOON



ICONIC LOCATION



10 MINS
BUSINESS BAY



5 MINS
THE MEYDAN HOTEL



12 MINS
DIFC



15 MINS
BURJ AL ARAB



12 MINS
WORLD TRADE CENTRE



20 MINS
INTERNATIONAL AIRPORT



7 KM
Crystal Lagoon

8.4 KM Cycling & Running Track





60%
Green Cover



AMENITIES



Bicycle Track



Jogging Track



Supermarket



Pharmacy



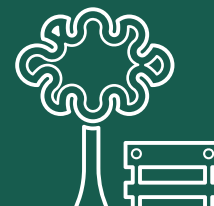
School



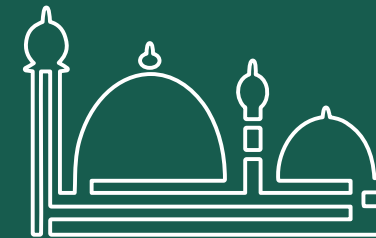
Crystal Lagoon
& Beachfront



Kids Play
Area



Parks



Mosque

DISTRICT ONE MASTERPLAN



TOWER LOCATION MAP

RESIDENCE 6
WATER HAS A NEW FRONT.

Disclaimer: The design layouts, dimensions, guidelines, visualizations, renderings, images and any other information as contained herein is provided for illustrative purposes only and subject to change at any time at the sole discretion of the Developer.

TOWER EXTERIOR



Disclaimer: The design layouts, dimensions, guidelines, visualizations, renderings, images and any other information as contained herein is provided for illustrative purposes only and subject to change at any time at the sole discretion of the Developer.

APARTMENT TOWER INTERIORS



APARTMENT TOWER INTERIORS



APARTMENT TOWER INTERIORS



G+6 Apartments - Residence 6

3rd to 6th Floor

1, 2 and 3 Bedroom Apartments



**MOHAMMED BIN RASHID
AL MAKTOUM CITY**

DISTRICT ONE

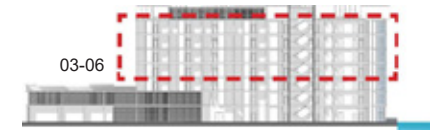
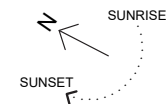
MEYDAN ONE



DUBAI SKYLINE

MEYDAN HOTEL

- 3 BEDROOM
- 2 BEDROOM
- 1 BEDROOM
- CRYSTAL LAGOON



Key Section

G+6 Apartments - Residence 6

2nd Floor

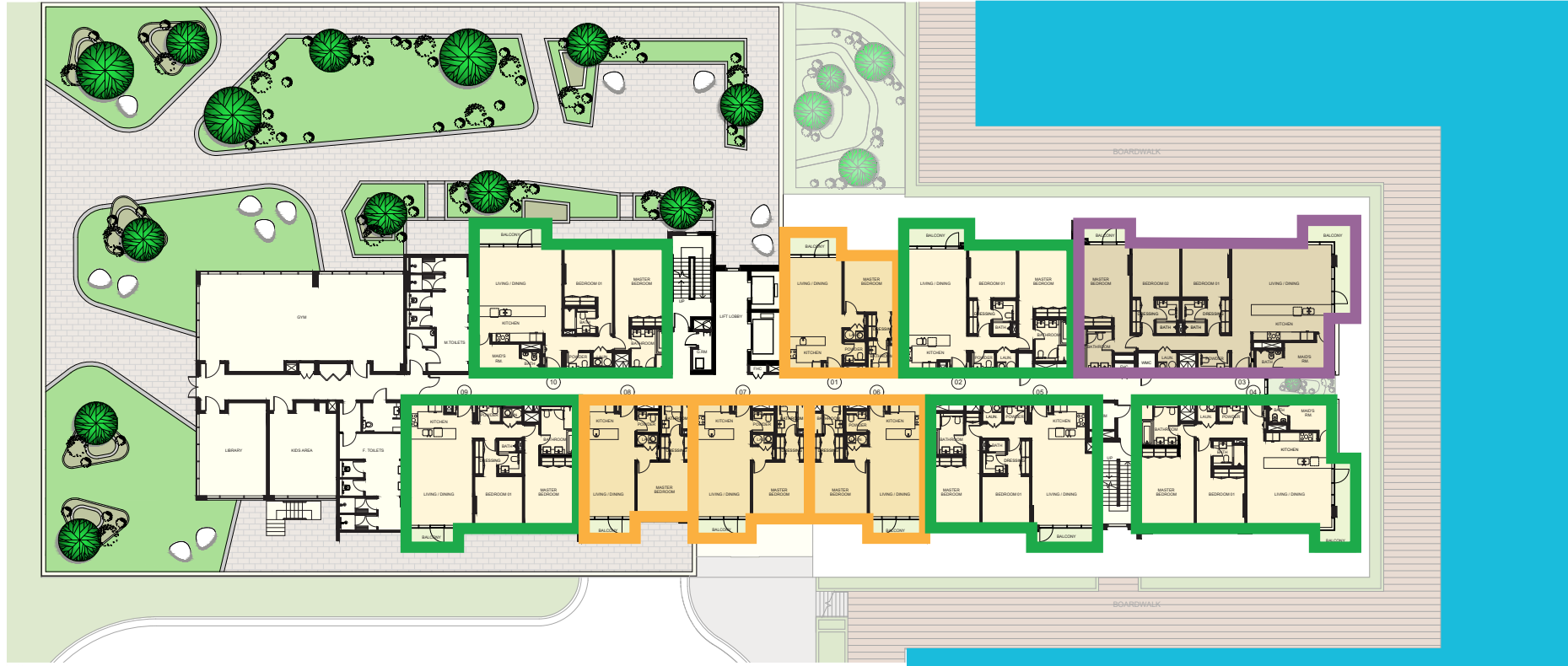
1, 2 and 3 Bedroom Apartments



MOHAMMED BIN RASHID
AL MAKTOUM CITY

DISTRICT ONE

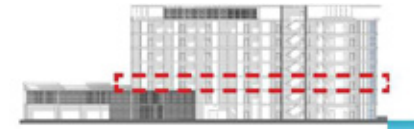
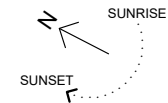
MEYDAN ONE



DUBAI SKYLINE

MEYDAN HOTEL

-  3 BEDROOM
-  2 BEDROOM
-  1 BEDROOM
-  CRYSTAL LAGOON



Key Section

G+6 Apartments - Residence 6

1st Floor

1, 2 and 3 Bedroom Apartments



**MOHAMMED BIN RASHID
AL MAKTOUM CITY**

DISTRICT ONE

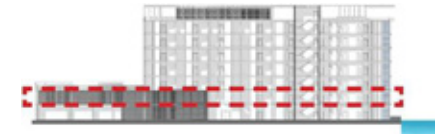
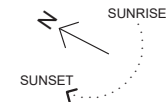
MEYDAN ONE



DUBAI SKYLINE

MEYDAN HOTEL

- 3 BEDROOM
- 2 BEDROOM
- 1 BEDROOM
- CRYSTAL LAGOON



Key Section

3 BEDROOM

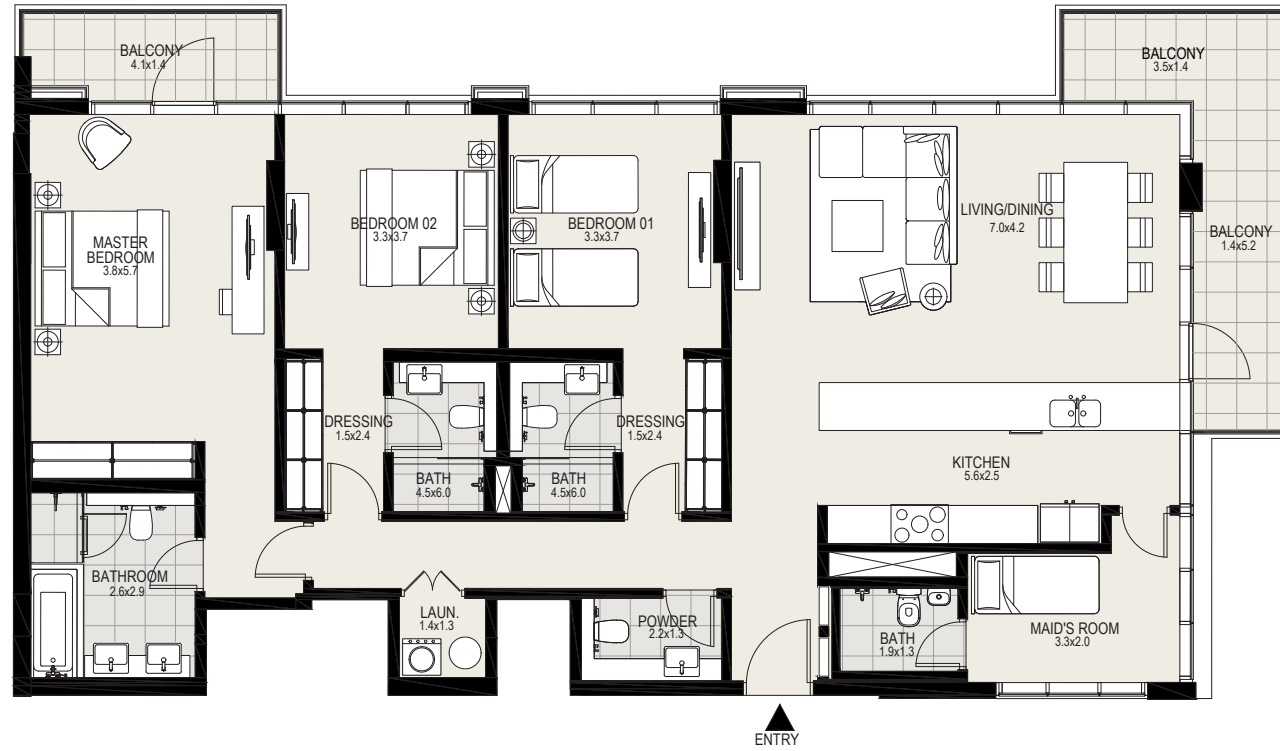
1ST TO 6TH FLOOR

Suite Area:	1731 sq. ft
Balcony Area:	195 sq. ft
Total Area:	1926 sq. ft



MOHAMMED BIN RASHID
AL MAKTOUM CITY

DISTRICT ONE



G+6
KEY PLAN

2 BEDROOM

1ST TO 6TH FLOOR

Suite Area: 1093 - 1305 sq. ft

Balcony Area: 54 -123 sq. ft

Total Area: 1162 - 1424 sq. ft



MOHAMMED BIN RASHID
AL MAKTOUM CITY

DISTRICT ONE



G+6
KEY PLAN

2 BEDROOM

1ST TO 6TH FLOOR

Suite Area: 1093 - 1305 sq. ft

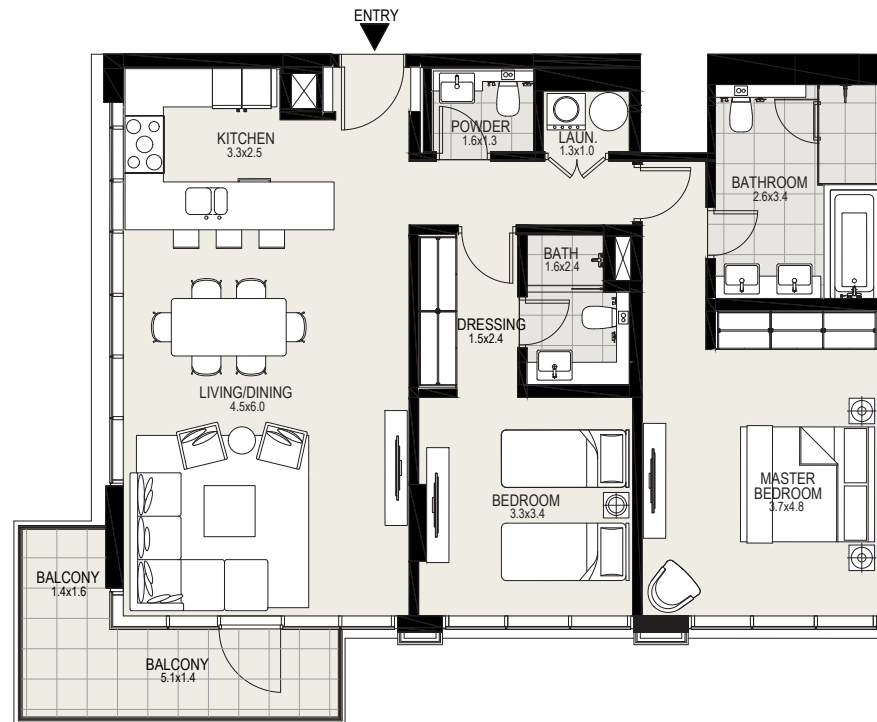
Balcony Area: 54 - 123 sq. ft

Total Area: 1162 - 1424 sq. ft



MOHAMMED BIN RASHID
AL MAKTOUM CITY

DISTRICT ONE

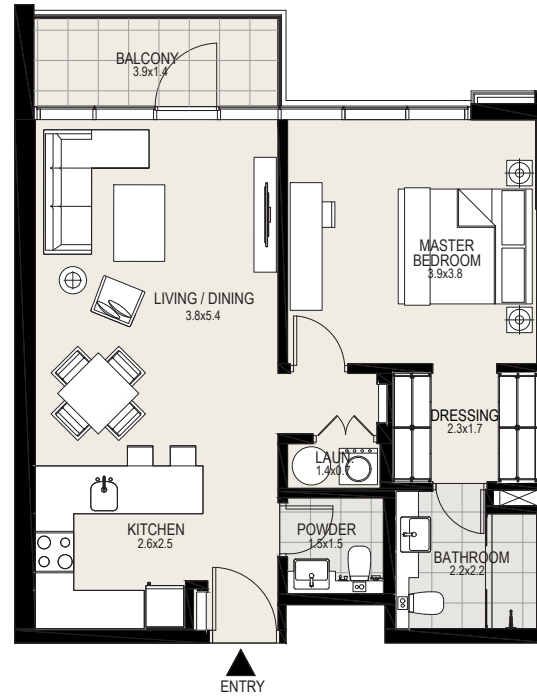


G+6
KEY PLAN

1 BEDROOM

1ST TO 6TH FLOOR

Suite Area:	703 - 712 sq. ft
Balcony Area:	61 sq. ft
Total Area:	764 - 773 sq. ft



G+6
KEY PLAN

G+6 Apartments - Residence 6

Ground Floor

1, 2 and 3 Bedroom Apartments



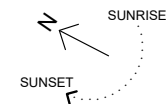
**MOHAMMED BIN RASHID
AL MAKTOUM CITY**

DISTRICT ONE

MEYDAN ONE



- 3 BEDROOM
- 2 BEDROOM
- 1 BEDROOM
- CRYSTAL LAGOON



Key Section

3 BEDROOM

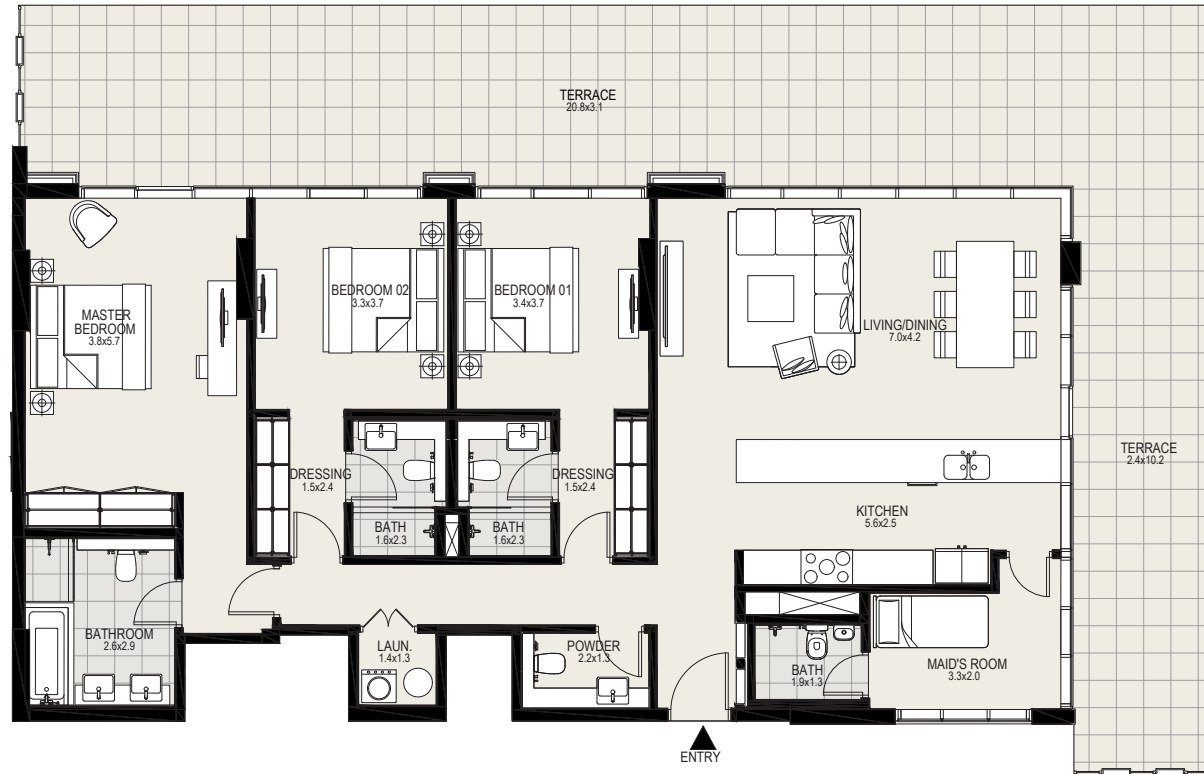


MOHAMMED BIN RASHID
AL MAKTOUM CITY

DISTRICT ONE

GROUND FLOOR

Suite Area	1729	sq. ft
Terrace Area	981	sq. ft
Total Area	2710	sq. ft



G+6
KEY PLAN

2 BEDROOM

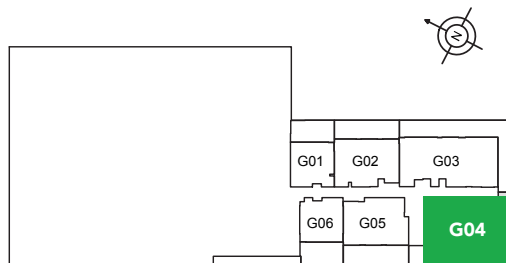
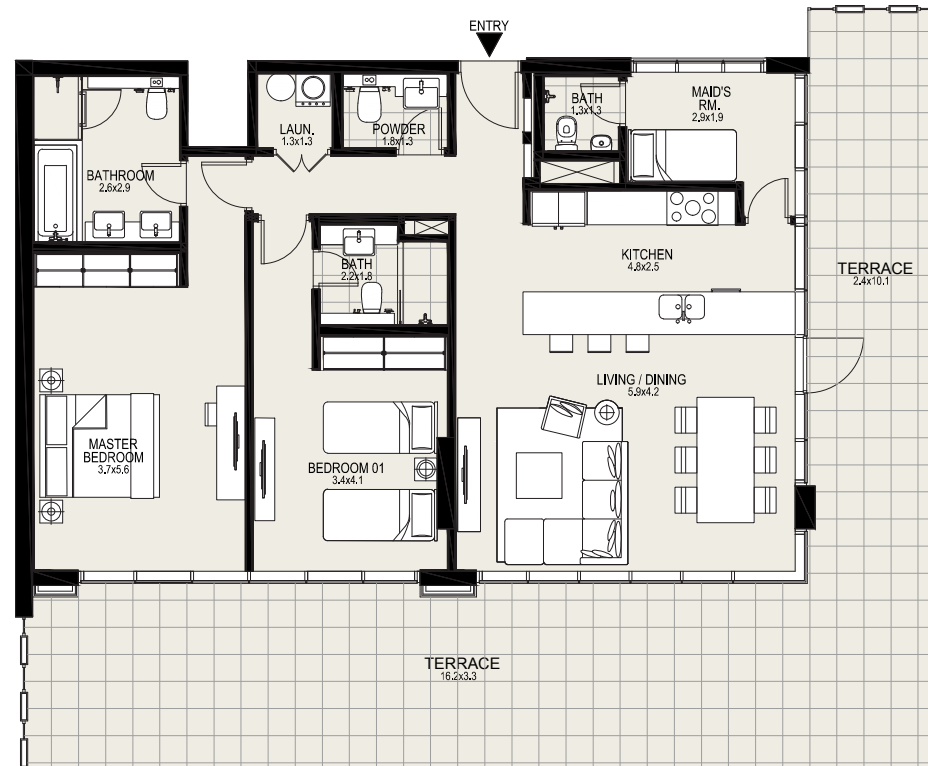


MOHAMMED BIN RASHID
AL MAKTOUM CITY

DISTRICT ONE

GROUND FLOOR

Suite Area	1304	sq. ft
Terrace Area	842	sq. ft
Total Area:	2147	sq.ft



G+6
KEY PLAN

2 BEDROOM

GROUND FLOOR

Suite Area: 1094 - 1105 sq. ft

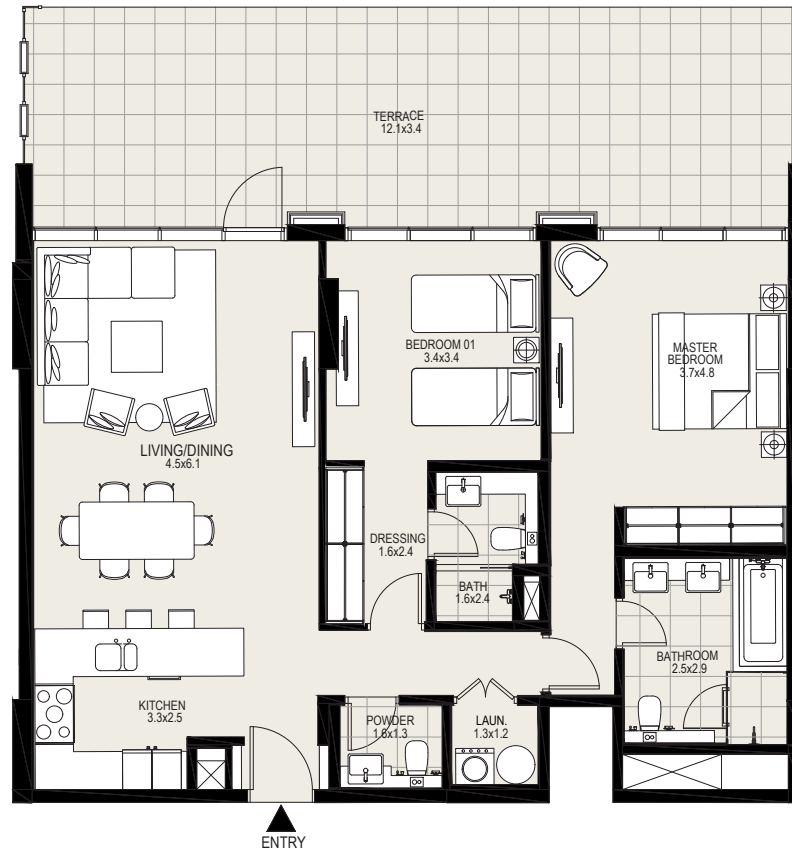
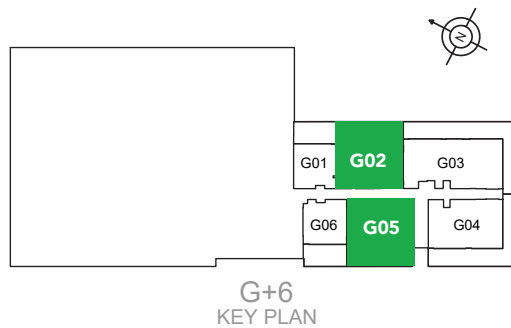
Balcony Area: 452 - 453 sq. ft

Total Area: 1546 - 1558 sq. ft



MOHAMMED BIN RASHID
AL MAKTOUM CITY

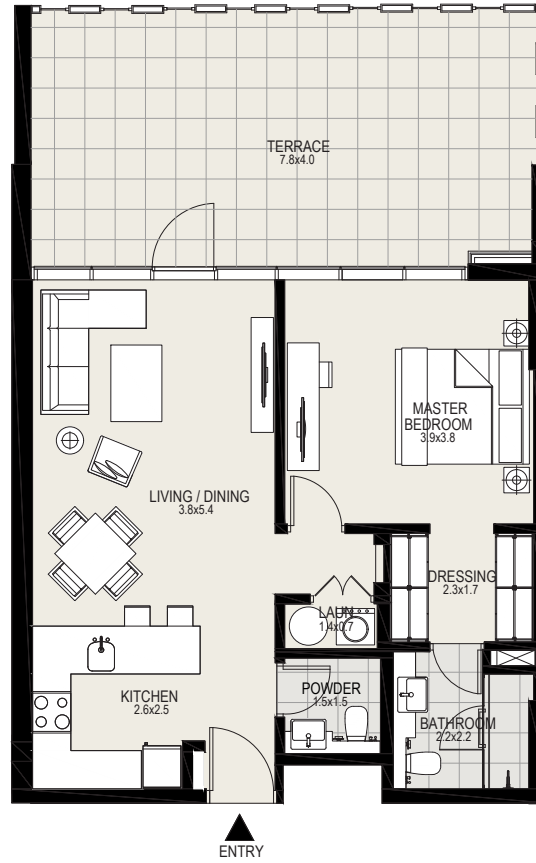
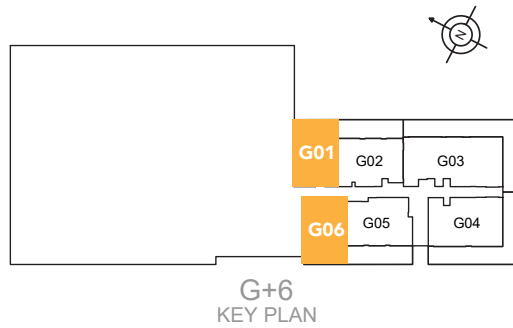
DISTRICT ONE



1 BEDROOM

GROUND FLOOR

Suite Area: 702 - 711 sq. ft
Balcony Area: 349 - 355 sq. ft
Total Area: 1051 - 1067 sq. ft



PAYMENT PLAN

BOOKING AMOUNT*	1ST INSTALMENT*	2ND INSTALMENT*	3RD INSTALMENT*
10%	5%	5%	5%
Upon Booking*	30-Oct-2019	10% Construction 30-MAR-2020	20% Construction 30-JUN-2020
4TH INSTALMENT*	5TH INSTALMENT*	6TH INSTALMENT*	FINAL INSTALMENT*
5%	10%	10%	50%
30% Construction 30-SEP-2020	40% Construction 30-DEC-2020	50% Construction 28-FEB-2021	On Completion 31-DEC-2021

*Terms & Conditions Apply.