

RISE RESIDENCES



Elevate your life
LIVE PLENTY



INDEX



01. _____ Rise Residences	06
02. _____ Location	14
03. _____ Lifestyle	30
04. _____ Amenities	36
05. _____ Architecture	58
06. _____ Residences	62
07. _____ Developer	80



01

RISE RESIDENCES

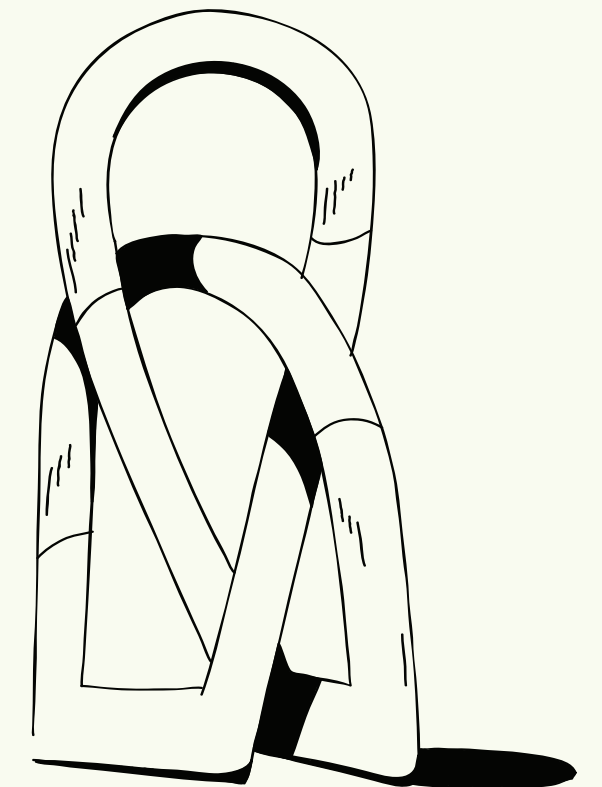
Discover Modern Living



EMBRACE THE BEST OF URBAN LIVING

Bask in the radiant sunlight of the stunning contemporary Rise Residences, offering stylish studios and spacious 1- and 2-bedroom apartments designed for the joy-seeking, urban trendsetters.

The building's chic and sophisticated design is enhanced by podium parking and ground-floor retail, creating an engaging ambiance.





Enhancing your residential sojourn, a plethora of convenient amenities beckon, including a state-of-the-art gymnasium and an invigorating swimming pool. Revel in picturesque vistas from expansive glass panels that revitalize and ignite creativity effortlessly.

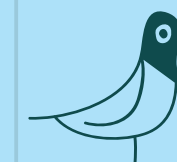


Embrace a centrally connected location where enthusiastic celebrations, shared moments of laughter and engaging interactions await.



02 LOCATION

Discover a Chic
and Vibrant Address





LIVE CONNECTED TO THE BEST OF DUBAI



In the pulsating core of the iconic global city, Rise Residences proudly stands as a vibrant and conveniently positioned gem in Jumeirah Village Circle.

Prepare to be enthralled by an urban oasis with a whimsical sanctuary amidst the city's bustling rhythm. This location creates a cheerful ambiance that fosters relaxed socializing and delightful get-togethers.

The community boasts vibrant eateries, leisure zones, pedestrian walkways and neighborhood attractions, promising a fulfilling lifestyle for metropolitans, trailblazers, and city slickers.



Immerse yourself in the buzz of city life while enjoying the tranquility of nature at this exceptional location.

A DYNAMIC COMMUNITY

Jumeirah Village Circle is a thriving community, brimming with a lively and energetic atmosphere that will invigorate residents and make them feel alive.

Strategically located near some of the city's most iconic landmarks and attractions, including top-rated schools, opulent hotels, and world-renowned medical centers, this neighborhood has everything a modern lifestyle demands. With its welcoming locals and multifaceted cultural scene, JVC is where everyone can feel at home and find their place in this dynamic and diverse community.



Neighborhood Map

LEISURE

- 1. Circle Mall
- 2. Al Khail Avenue
- 3. The Springs Souk

F&B

- 4. The Coffee Mug
- 5. Pide Keyfi (Turkish Bite)
- 6. Trattoria by Cinque
- 7. Il Forno Restaurant
- 8. Loui Restoran & Cafe

RETAIL

- 9. Spinneys
- 10. Nesto Hypermarket
- 11. All Day MiniMart
- 12. West Zone Supermarket
- 13. Aswaq Mart
- 14. Viva Supermarket

HOSPITALITY

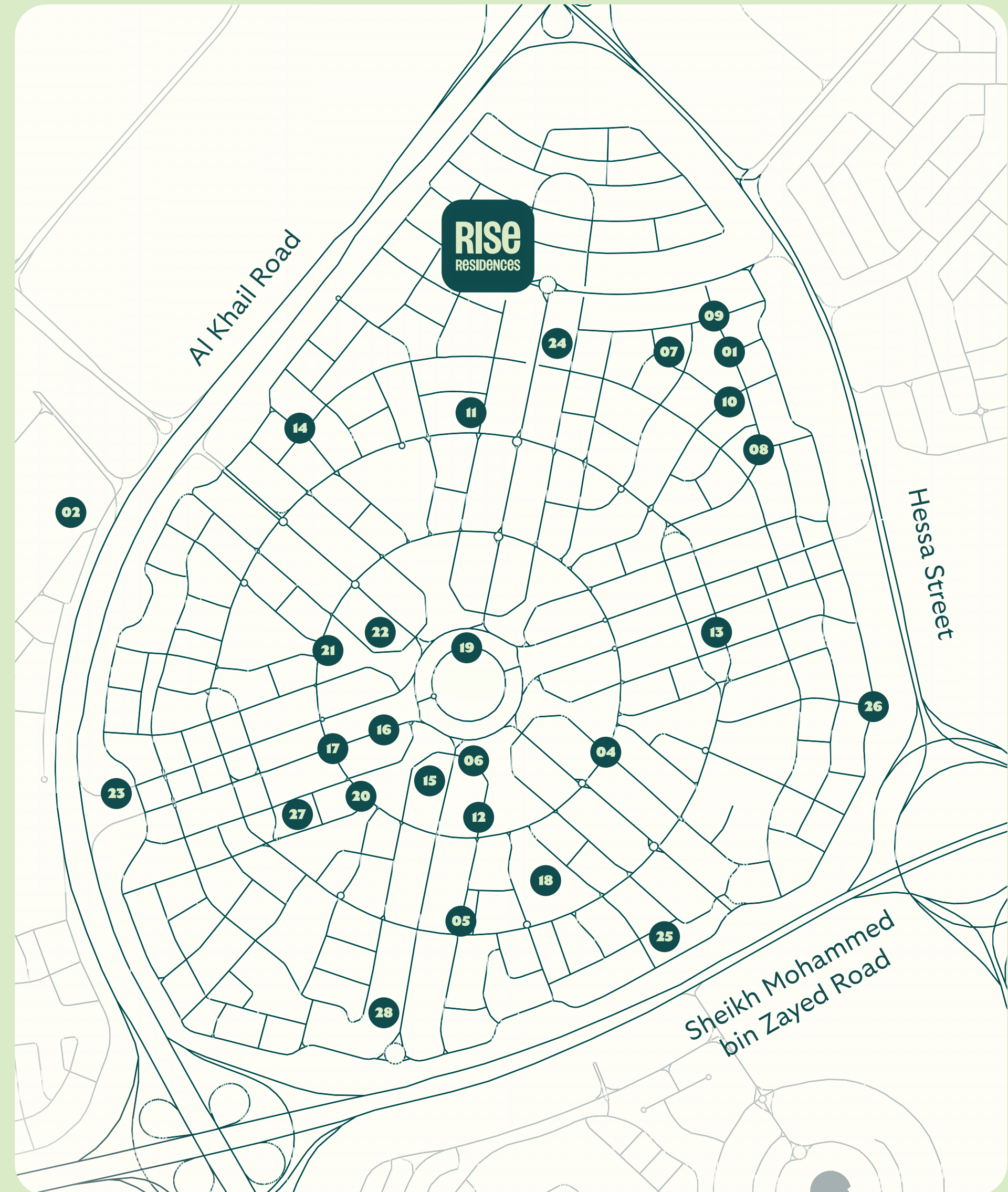
- 15. FIVE Hotel
- 16. The One Hotel
- 17. The First Collection

PARKS

- 18. Community Park
- 19. Le Gardin
- 20. Castle Park
- 21. Samer Park
- 22. Gardens at

CLINICS

- 23. Aster Clinic
- 24. Right Health Medical Centre
- 25. Oasis Dental Care Dubai
- 26. HealthHub
- 27. Magnum Clinic
- 28. Express Veterinary Clinic





SEAMLESSLY CONNECTED TO THE BEST

With seamless access via Al Khail Road, Sheikh Mohammed Bin Zayed Road and Hessa Street, this neighborhood embodies a trendy and cosmopolitan lifestyle, perfect for those seeking a dynamic and modern living experience.



Connectivity Map

COMMERCIAL

- 1. Dubai Media City
- 2. Dubai Knowledge Park
- 3. Business Bay
- 4. DIFC
- 5. Dubai Design District
- 6. Dubai Healthcare City

LEISURE

- 7. Dubai Marina Mall
- 8. Montgomerie Golf Club Dubai
- 9. Mall of the Emirates
- 10. Dubai Butterfly Garden
- 11. Dubai Miracle Garden
- 12. Trump International Golf Course
- 13. Dubai Autodrome
- 14. Global Village
- 15. IMG Worlds of Adventure
- 16. Kite Beach
- 17. Jumeirah Beach
- 18. The Green Planet
- 19. Dubai Mall
- 20. Ras Al Khor Wildlife Sanctuary

PARKS

- 21. Al Barsha Park
- 22. Safa Park
- 23. Dubai Safari Park
- 24. Zabeel Park

HOSPITALITY

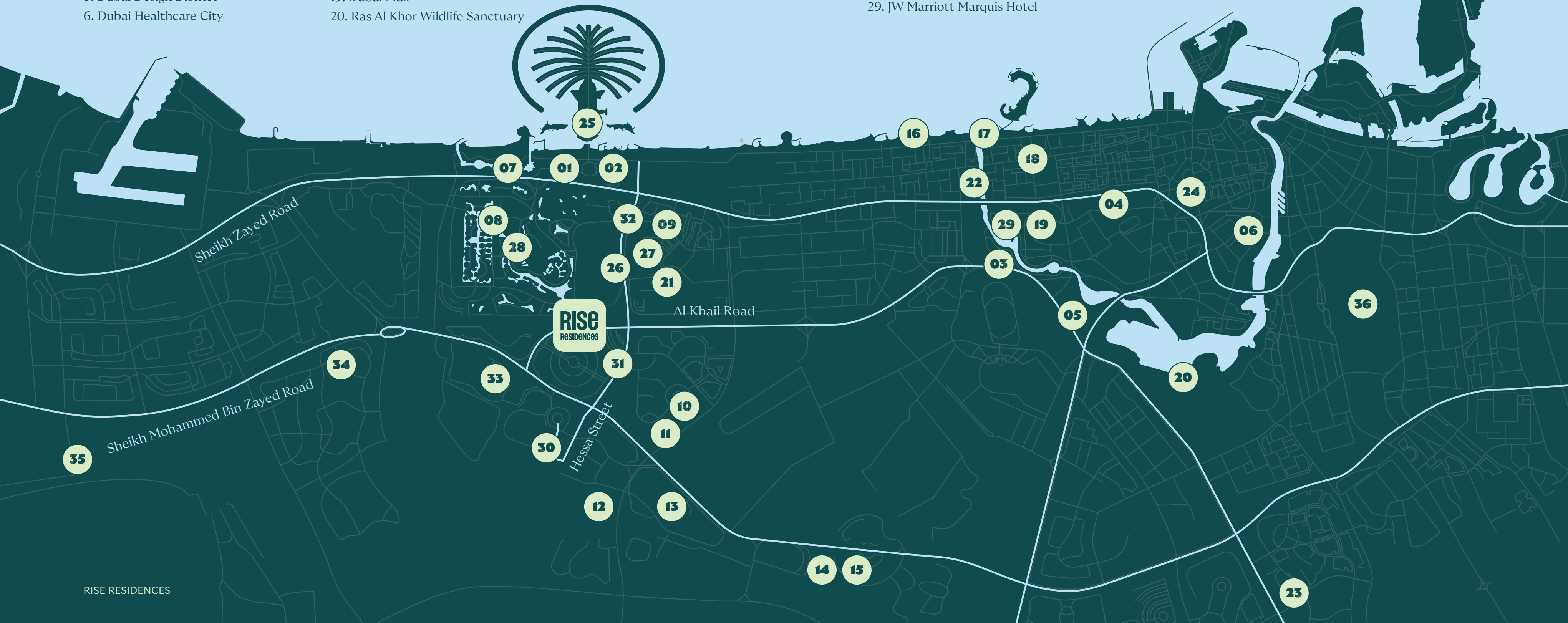
- 25. FIVE Palm Jumeirah Hotel
- 26. Novotel Dubai Al Barsha
- 27. Courtyard by Marriott Dubai
- 28. Address Montgomerie
- 29. JW Marriott Marquis Hotel

HEALTHCARE

- 30. Emirates Hospital Day Surgery
- 31. Right Health Medical Centre
- 32. Saudi German Hospital
- 33. Mediclinic Meaisem
- 34. NMC Royal Hospital

AIRPORTS

- 35. Al Maktoum International Airport
- 36. Dubai International Airport



Landmark Connectivity



Palm Jumeirah 16 min

16 min Dubai Marina

20 min Jumeirah Beach

23 min Burj Khalifa

25 min Museum of the Future

27 min Dubai Airport

15 min Dubai Expo City

RISE
RESIDENCES

Sheikh Zayed Road

Sheikh Mohammed Bin Zayed Road

Al Khail Road

Hessa Street



03

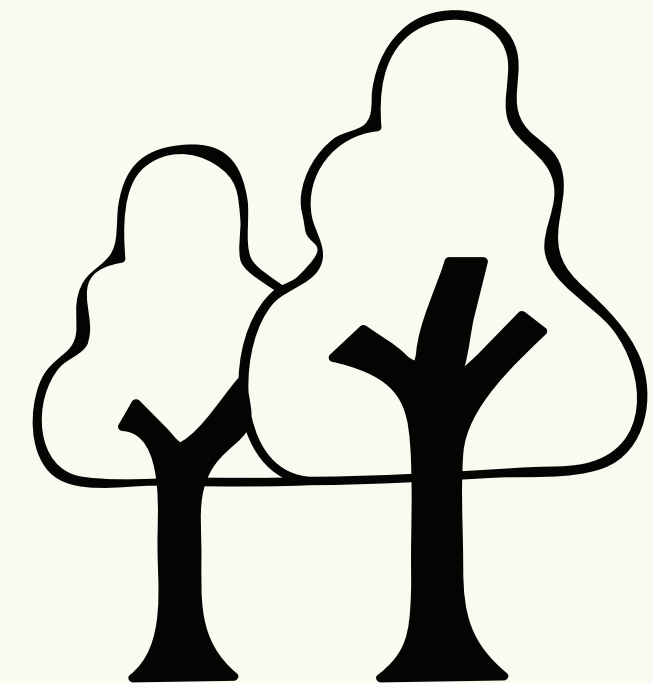
LIFESTYLE

Cosmopolitan Living at its Best



THE EPITOME OF TRENDY LIVING

Living in Rise Residences personifies an upscale and contemporary lifestyle, with a cutting-edge fitness center, an indulgent rooftop pool, a padel court, elevated gardens and an array of enthralling entertainment options steps away. In addition, the centrally connected location provides seamless access to the city's most exclusive amenities, making errands and dining out a breeze.



With everything conveniently located within the building or just a short walk away, residents can relish unmatched convenience and a truly cosmopolitan living experience.

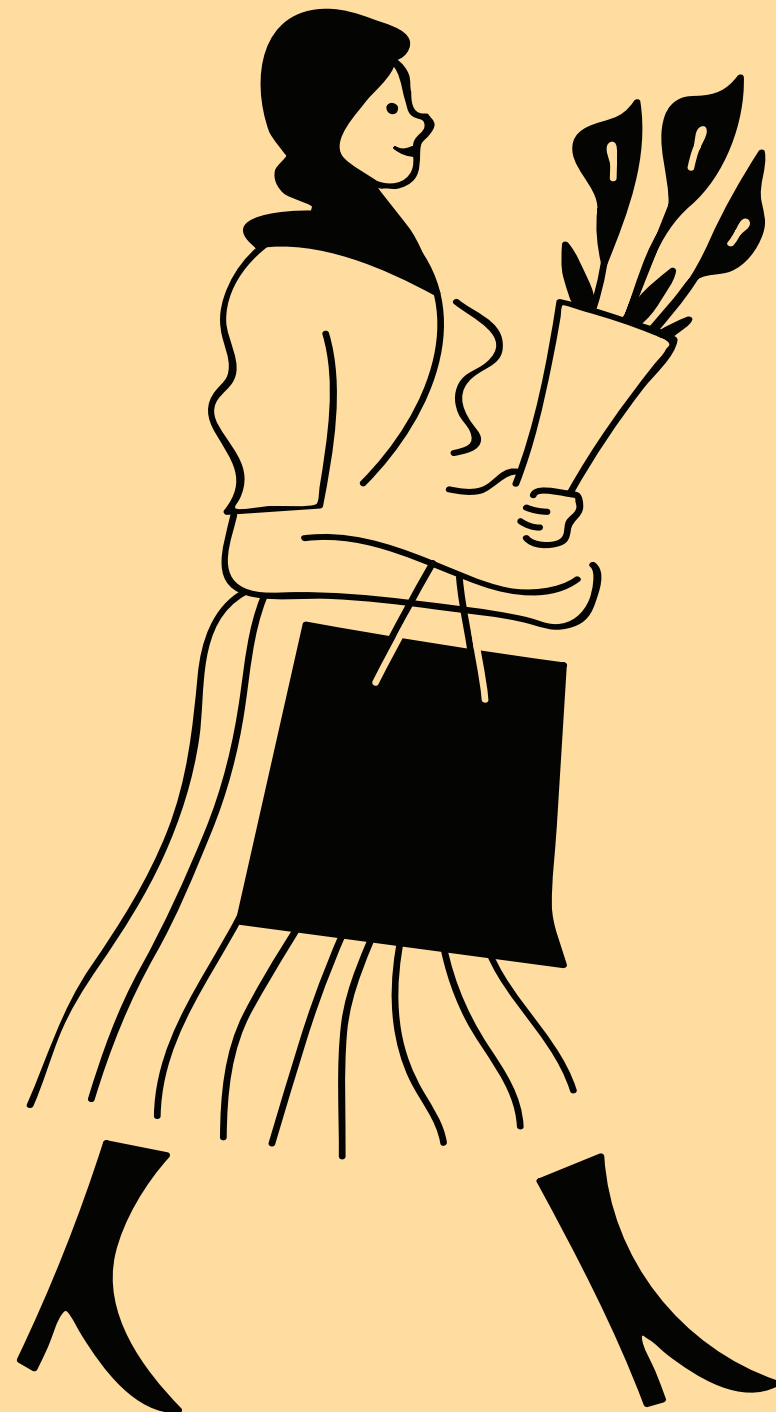


04 AMENITIES

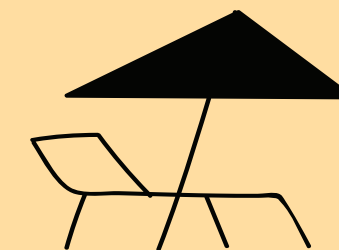
Elevate Your Lifestyle



INDULGENT EXTRAS FOR THE RESIDENTS



The amenities in this space are unrivaled and provide resort-style experiences to enhance personal and social well-being.



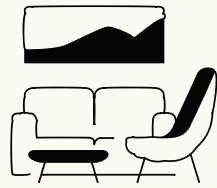
One can use the building's amenities, such as the elevated gardens, co-working and social spaces, rooftop terrace, rooftop gym, pool, padel court and other communal spaces, without ever leaving the building.



Retail

CONVENIENT SHOPPING AT YOUR FINGERTIPS

Experience the convenience of having a variety of shops and services just an elevator ride away. With ground-floor retail, everything you need is within reach.



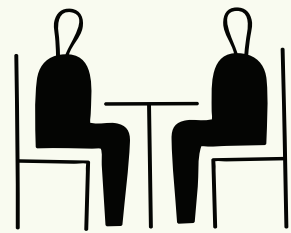
Lobby

A SOPHISTICATED FOYER

The lobby at Rise Residences is a sight to behold, with its stunning lighting fixtures, round-edged furniture, sleek design and carefully curated art pieces evoking a convivial and art-inspired atmosphere.

This multi-purpose space is perfect for gathering with friends and socializing, providing an enticing milieu for residents and guests alike.

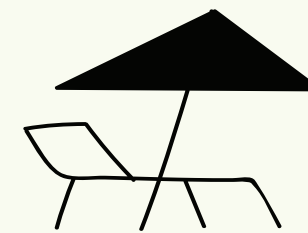




Co-working & Social Spaces

ENHANCE WORK AND SOCIAL LIFE

Step into our thoughtfully curated co-working and social spaces, where the seating areas are ingeniously crafted to create an ambiance of friendliness—delight in the perfect atmosphere, whether you're seeking casual camaraderie or serene moments of reflection. Unwind, relish, and forge connections where inspiration and relaxation intertwine seamlessly.

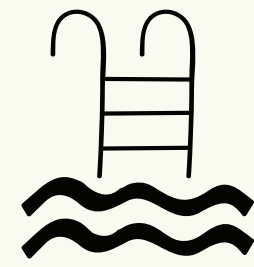


Rooftop Terrace

ENRICHED SERENITY: ROOFTOP BLISS AWAITS

Ascend to new heights of relaxation and rejuvenation on our exquisite rooftop terrace. Immerse yourself in a sanctuary of calm where the bustling city fades away and a sense of serenity takes over. Unwind amidst breathtaking panoramic views, enveloped in an ambiance that is nothing short of extraordinary.





Rooftop Swimming Pool

RELAX BY THE POOL

The swimming pool is an idyllic oasis, providing a refreshing respite for relaxation and unwinding on hot days.

You can take a relaxed, revitalizing dip, bask in the warm sun and relish the tranquil ambiance while lounging on the comfortable chairs, making it an ideal spot for a blissful retreat.

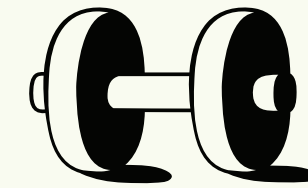




Steam Room

STEAMY SANCTUARY

This luxury space provides a therapeutic experience that blends fragrant natural wood and condensed steam, helping to lift the spirits and offering a way to escape from everything. What more can you ask for?

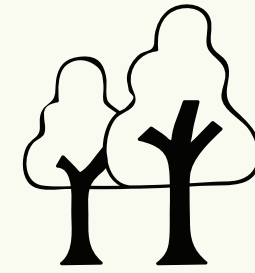


Rooftop Gymnasium

PUMP UP THE ENERGY

You can elevate your fitness and wellness game by utilizing the state-of-the-art gymnasium with modern exercise equipment. Stay on top of your health goals quickly and conveniently without ever having to leave the building.





Elevated Gardens

SCENIC GARDEN ESCAPES

Escape the hustle and bustle of the city and find peace in our tranquil terraced gardens, offering stunning views and lush greenery to soothe your soul. Relax, unwind and enjoy the perfect spot to entertain guests or find a quiet retreat from the busy urban lifestyle.

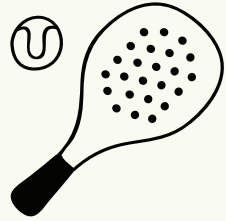


Jogging Track

FOR FITNESS ENTHUSIASTS

Embrace the electrifying lifestyle of Rise Residences as you take to the jogging track. Indulge in an energizing run that clears your mind and awakens your senses.





Padel Tennis

TAKE YOUR GAME TO THE NEXT LEVEL

Embrace your competitive spirit and elevate your game to new heights. Enjoy an immersive and dynamic recreational experience right at your doorstep, where you can engage in active and exhilarating games in your home.





05 ARCHITECTURE

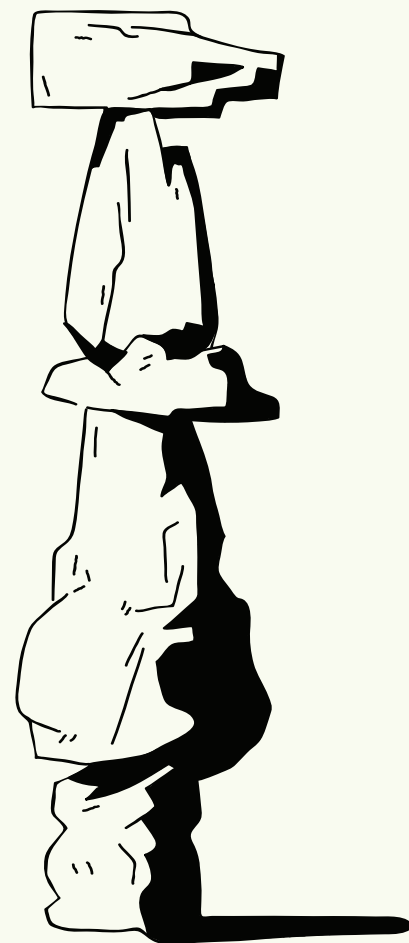
Contemporary Architecture



WITH SLEEK AESTHETICS

The contemporary architecture of Rise Residences is a true masterpiece. The sleek and classy structure features floor-to-ceiling windows with acoustic glazing, creating a tranquil retreat from the hustle and bustle of the city.

The remarkable structure features embody a harmonious fusion of elegance and practicality, heightening the overall appeal of the edifice.

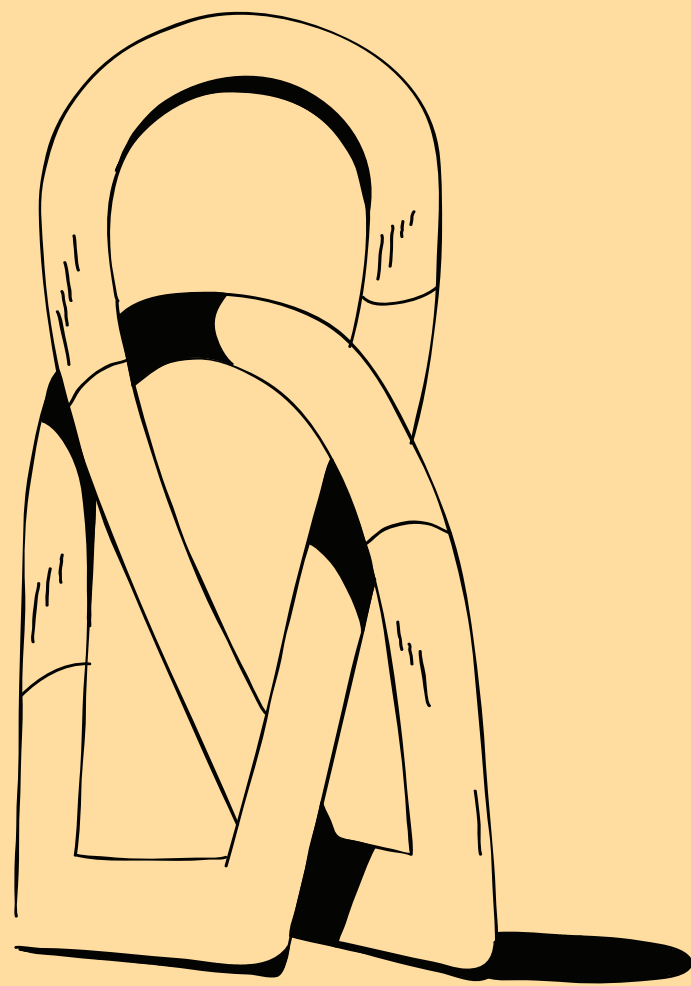


06 RESIDENCES

Urban Living at its Finest



EXCEPTIONAL HOMES WITH IMPECCABLE DESIGN



Experience the epitome of effortless living at Rise Residences, where exquisitely designed homes offer the ultimate living experience. Utility rooms and built-in storage spaces enhance the comforts and solve your often unanswered needs.

Embrace our delightful living environment's sociable charm and captivating allure, where every aspect has been carefully crafted to provide a cozy retreat.



Welcome home to a lifestyle that harmonizes beauty and functionality, elevating your senses to new heights.

Living Rooms

UNWIND IN COMFORT

At Rise Residences, relaxation and comfort take center stage in the design. The living rooms exude a convivial spirit and modern charm that is simply irresistible. These airy and smartly-designed living rooms create a warm and inviting atmosphere, ideally suited for peaceful relaxation and lively gatherings.

The generous sun-lit areas, adorned with floor-to-ceiling windows, frame mesmerizing views of the park and city, adding an extra touch of enchantment to your living experience.







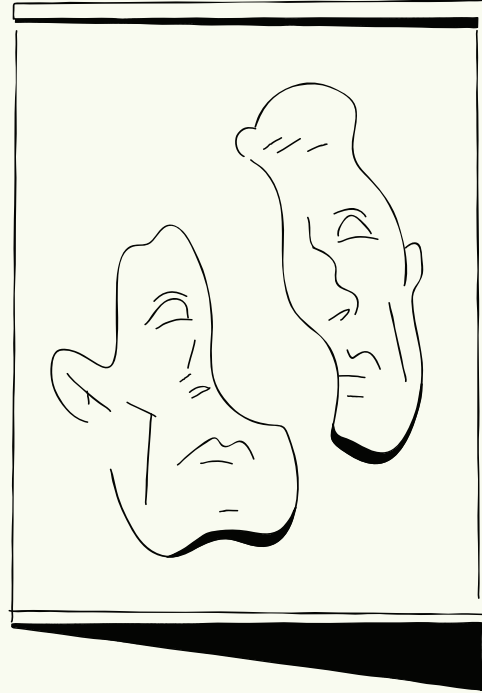
Kitchens

MODERN CULINARY SPACES

Experience the convenience and style of our tastefully designed kitchens at Rise Residences. With intelligent features, tasteful cabinetry and premium materials, meal preparation becomes effortless in premium fitted out kitchens that are equipped with high end Electrolux appliances. At Rise Residences, cooking is an enjoyable experience!

Whether you're hosting festive gatherings, enjoying joyful laughter, or engaging in warm conversations, our vibrant kitchens foster heart-warming connections.

Elevate your culinary experience in a space combines luxurious comfort and efficient functionality.



Bedrooms

SERENE BEDROOMS

The bedrooms are warm, comfortable and vogue with luminous spaces and open layouts that create a soothing vibe. Slip into a peaceful slumber in the serene bedrooms, where natural light and soft colors create a quiet and harmonious atmosphere.



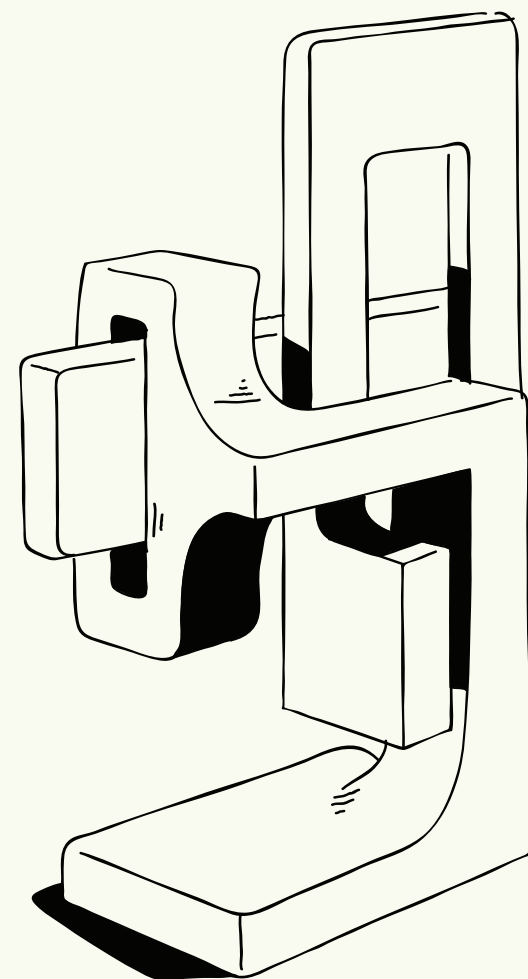




Bathrooms

SPA-INSPIRED BATHROOMS

The bathrooms exude class and character featuring custom vanities, elegant flooring, neutral tones and warm aesthetics.



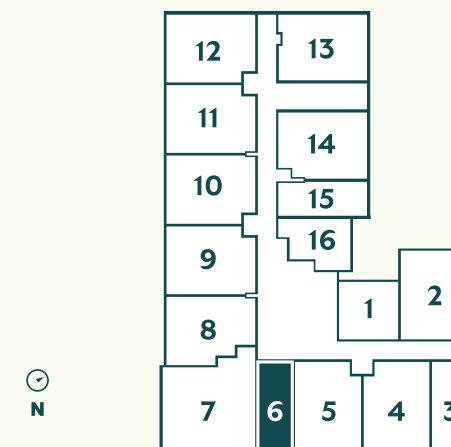
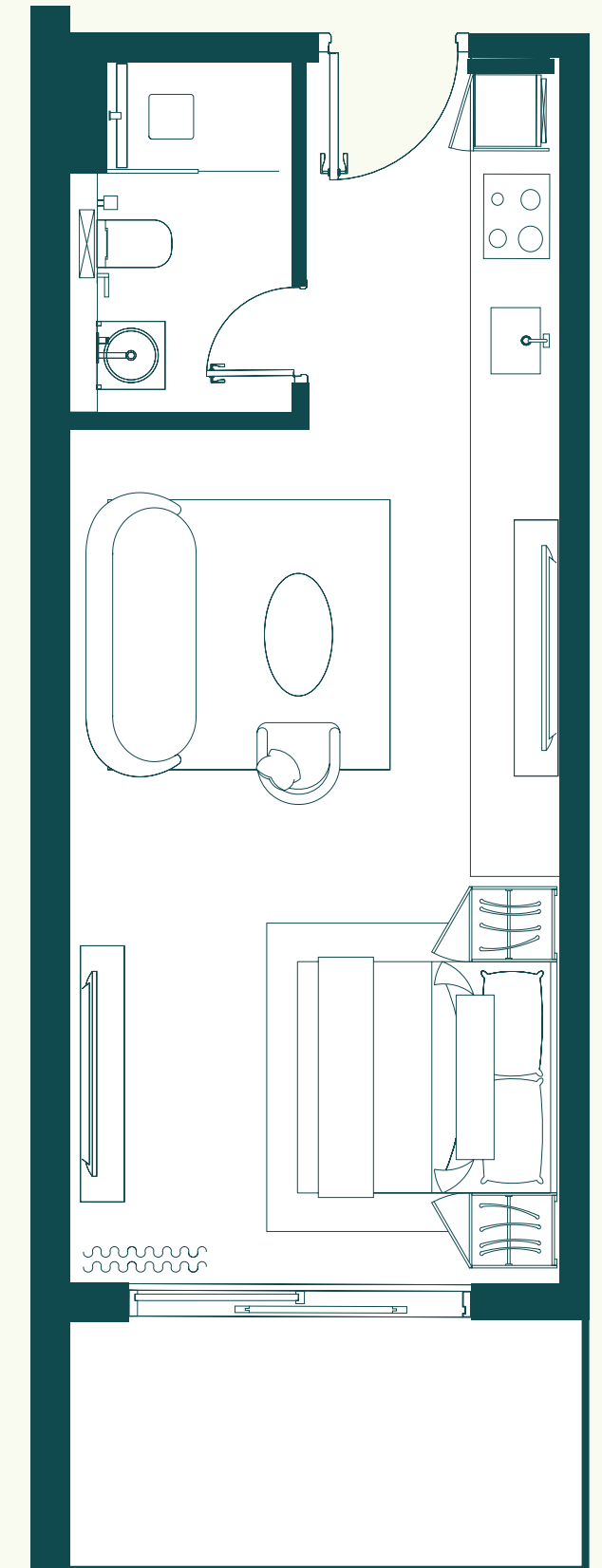
FLOORPLANS

STUDIO

Unit 206/906 418 Sq.ft

DIMENSIONS

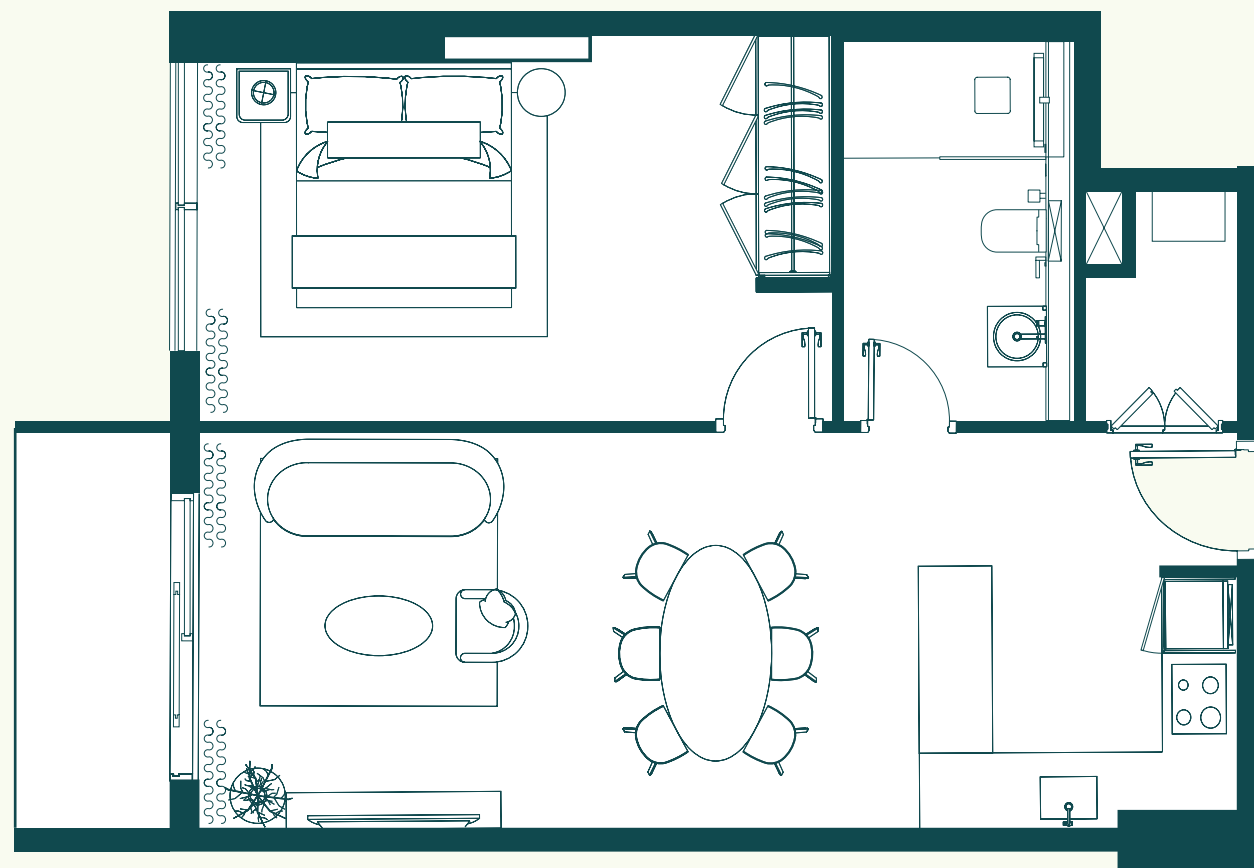
- ❶ INTERNAL AREA: 351.01 Sq.Ft. (32.61 Sq.M.)
- ❷ BALCONY AREA: 67.38 Sq.Ft. (6.26 Sq.M.)
- ❸ TOTAL AREA: 418.39 Sq.Ft. (38.87 Sq.M.)



1. All dimensions are in imperial and metric, and measured to structural elements and exclude wall finishes and construction tolerances. 2. All materials, dimensions, and drawings are approximate only. 3. Information is subject to change without notice at developer's absolute discretion. 4. Actual area may vary from the stated area. 5. Drawings not to scale. 6. All images used are for illustrative purposes only and do not represent the actual size, features, specifications, fittings, and furnishings. 7. The developer reserves the right to make revisions / alterations, at its absolute discretion, without any liability whatsoever.

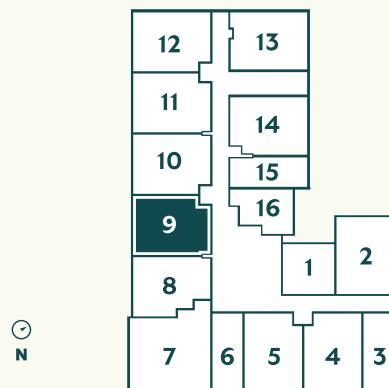
1 BED

Unit 209/909 711 Sq.ft



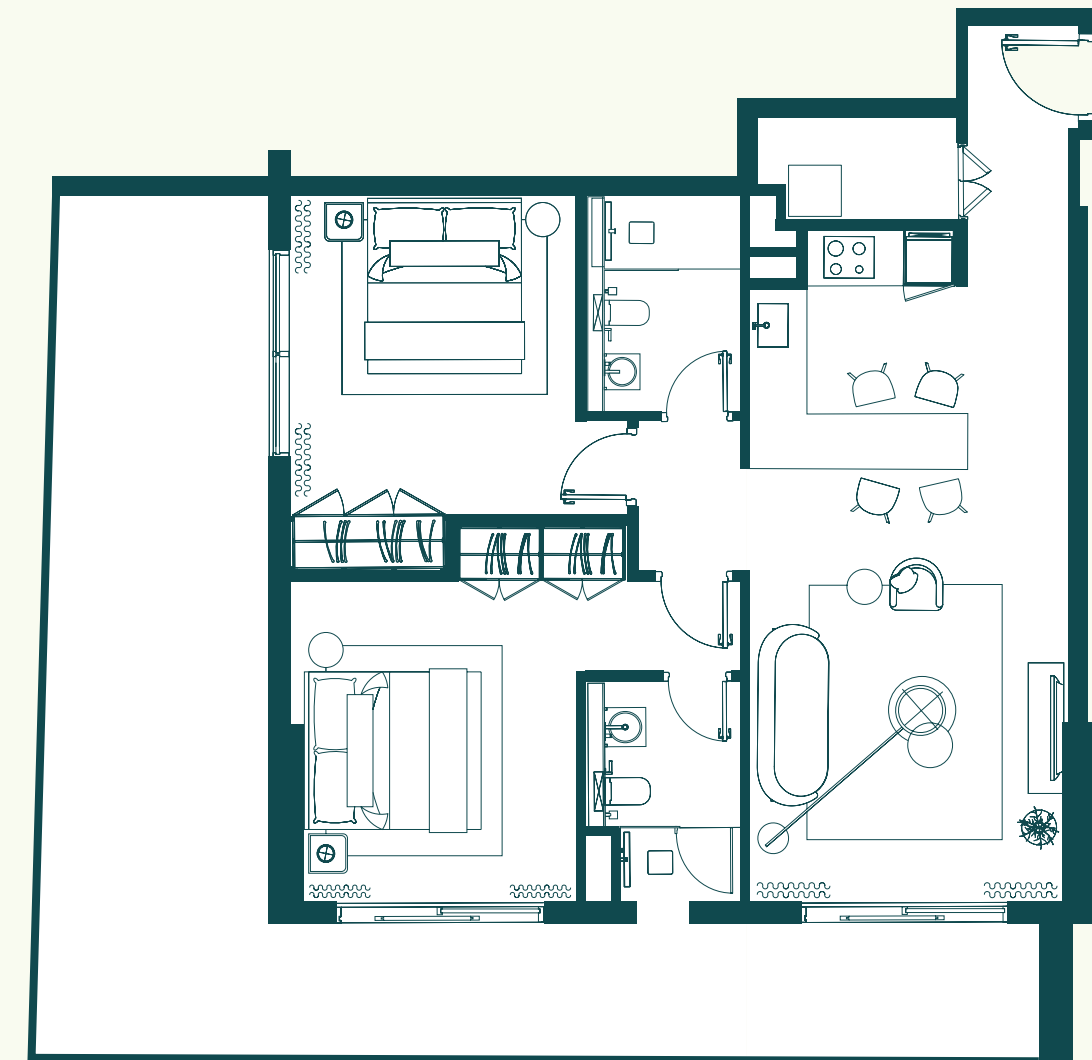
DIMENSIONS

- ❶ INTERNAL AREA: 635.29 Sq.Ft. (59.02 Sq.M.)
- ❷ BALCONY AREA: 76.10 Sq. Ft. (7.07 Sq.M.)
- ❸ TOTAL AREA: 711.39 Sq. Ft. (66.09 Sq.M.)



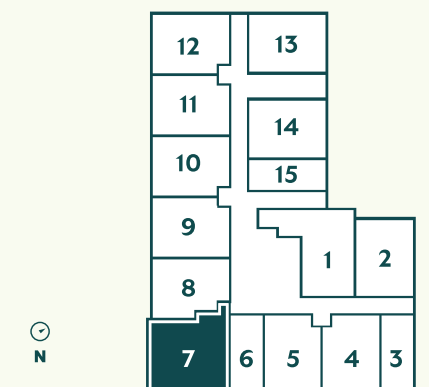
2 BED

Unit 107 1380 Sq.ft



DIMENSIONS

- ❶ INTERNAL AREA: 871.66 Sq.Ft. (80.98 Sq.M.)
- ❷ BALCONY AREA: 507.84 Sq.Ft. (47.18 Sq.M.)
- ❸ TOTAL AREA: 1379.50 Sq.Ft. (128.15 Sq.M.)





07 DEVELOPER

S&S

S&S is a boutique property developer driven by a profound dedication to building the ultimate living spaces without compromising on quality and firmly believes in the impact of the living environment on our quality of life.

Our unwavering commitment to preserving and enhancing residents' lifestyles sets us apart.

Renowned for our visionary approach, we create extraordinary developments like The White Palace, The Carla and Emtlak Townhouses. Our masterpieces are testaments to our pursuit of perfection. The White Palace is an enchanting oasis, seamlessly blending classical elegance with contemporary sophistication for an unrivaled living experience. The Carla and Emtlak Townhouses epitomize architectural brilliance, with every detail curated to harmonize with the surrounding landscape. These exceptional homes redefine modern luxury, offering residents a sanctuary of unparalleled beauty and tranquility.

Driven by our unwavering passion for excellence, we lead in sustainable development. Our unique projects celebrate architectural splendor while prioritizing environmental conservation, ensuring a greener and more sustainable future for future generations.

Glimpse into our collection of remarkable projects that have shaped our company's portfolio.

Our projects exemplify our commitment to excellence and innovation. Each property represents our unwavering dedication to creating exceptional spaces that redefine living.



THE WHITE PALACE

Dubai Silicon Oasis | 2012

Discover The White Palace, a symbol of sophisticated opulence in the dynamic Dubai Silicon Oasis.

This prestigious development showcases unparalleled architectural beauty presenting an unmatched living space for those with discerning tastes.



THE CARLA

Meydan | 2023

Nestled in the vibrant district of Meydan Avenue in Dubai, The Carla stands as the epitome of architectural brilliance. This architectural masterpiece embodies sophistication and elegance, a luxurious and contemporary low-rise building crafted with the utmost attention to detail.

Its sleek and contemporary design, adorned with floor-to-ceiling glass windows, captures the essence of modern elegance.



EMTILAK TOWNHOUSES

Al Furjan | 2022

Welcome to Emtilak Townhouses, a harmonious blend of luxury, sophistication, and tranquility in Dubai's vibrant Al Furjan community.

Emtilak Townhouses Phase 1 and Phase 2 offer an exceptional living experience for those who appreciate the finer things in life.