

ROKANE
G25



ROKANE G25

AN URBAN RESIDENTIAL BUILDING

Nestled amidst the vibrant landscape of Jumeirah Village Circle, ROKANE G25, low-rise structure exudes timeless elegance with a contemporary twist. Its classic design elements seamlessly blend with modern touches, creating a captivating facade that stands out in the bustling cityscape.

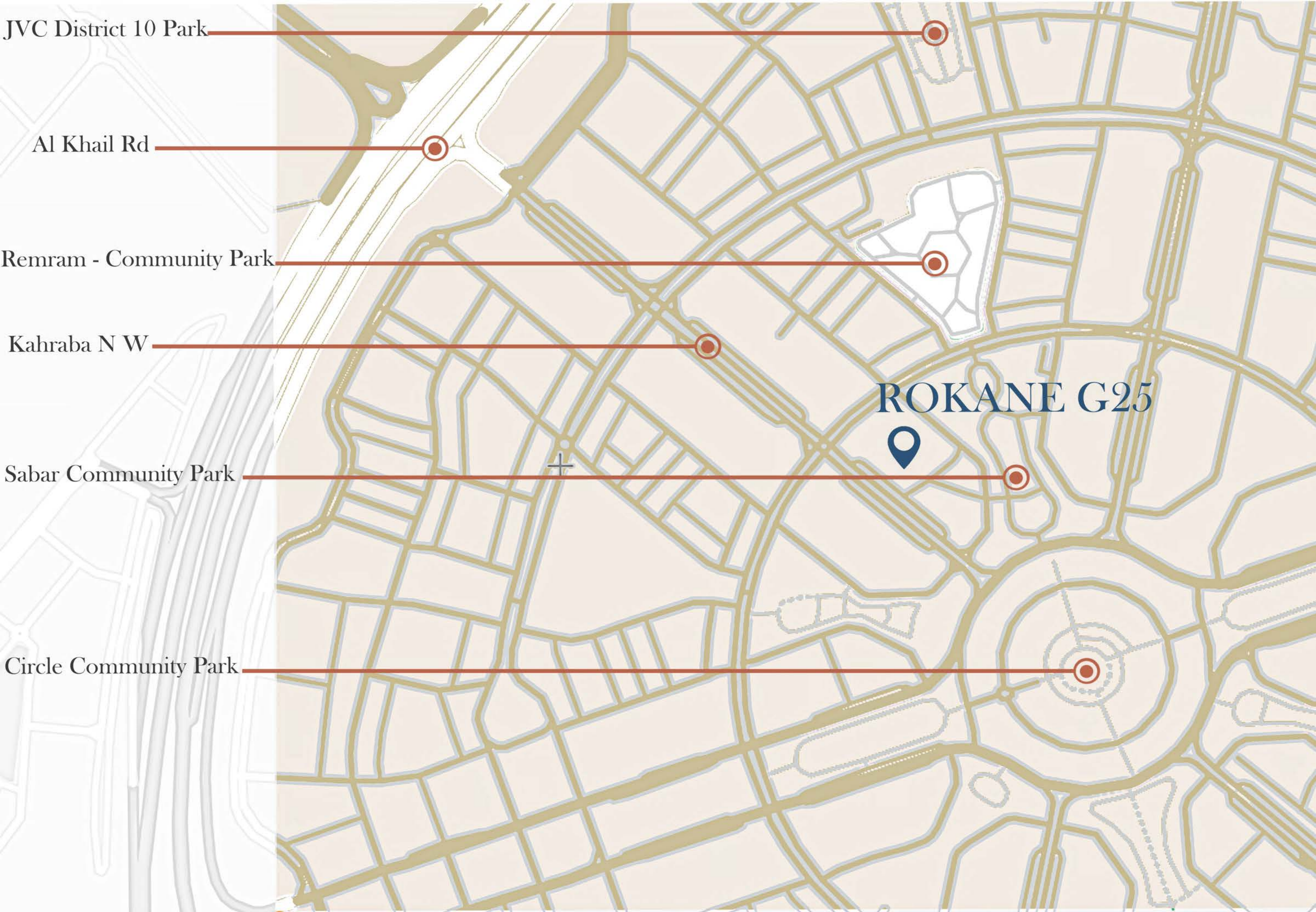
Crafted from high-quality materials, the building showcases a warm earth tones complemented by subtle metallic finishes create a welcoming ambiance that resonates with both tradition and innovation.



JUMEIRAH VILLAGE CIRCLE

Jumeirah Village Circle (JVC) in the heart of new Dubai offers a prime location with great connectivity to various parts of the emirate, making it a sought-after destination for both renters and buyers looking for affordable apartments and villas. Its popularity among investors is further boosted by its freehold status, competitive prices, and attractive rental yields.

Nakheel, the master developer behind JVC, has crafted a community known for its tranquil ambiance, complemented by lush gardens, parks, and a range of amenities. This blend of serene surroundings and modern conveniences makes JVC an attractive option for those seeking a balanced lifestyle in Dubai.



JVC District 10 Park

Al Khail Rd

Remram - Community Park

Kahraba N W

Sabar Community Park

Circle Community Park

ROKANE G25

JUMEIRAH VILLAGE CIRCLE



ROKANE G25

Located in a place where life is very convenient, ROKANE G25 is right across Al Khail Road, allowing for easy access when you step in and out of JVC

LOCATION MAP & DISTANCES



27 MINUTES
Academic City



18 MINUTES
IMG World Of Adventure



18 MINUTES
Falcon City Of Wonders



17 MINUTES
Global Village



30 MINUTES
Downtown Dubai
& Burj Khalifa



25 MINUTES
Museum Of the Future



40 MINUTES
Dubai International
Airport



30 MINUTES
Jumeirah Beach



20 MINUTES
Dubai Hills Mall



25 MINUTES
The Palm Jumeirah



COMMUNITY SERVICES

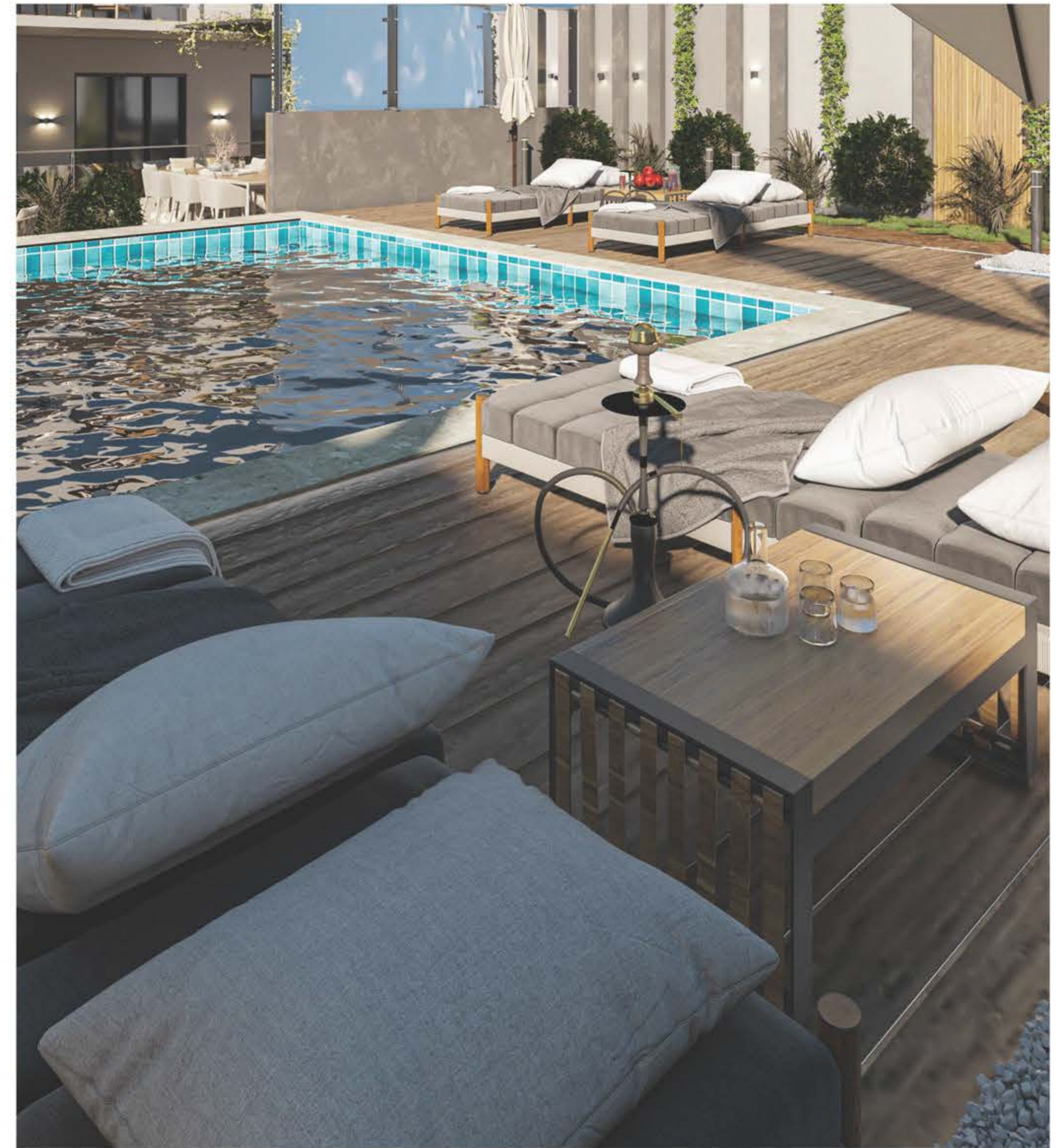
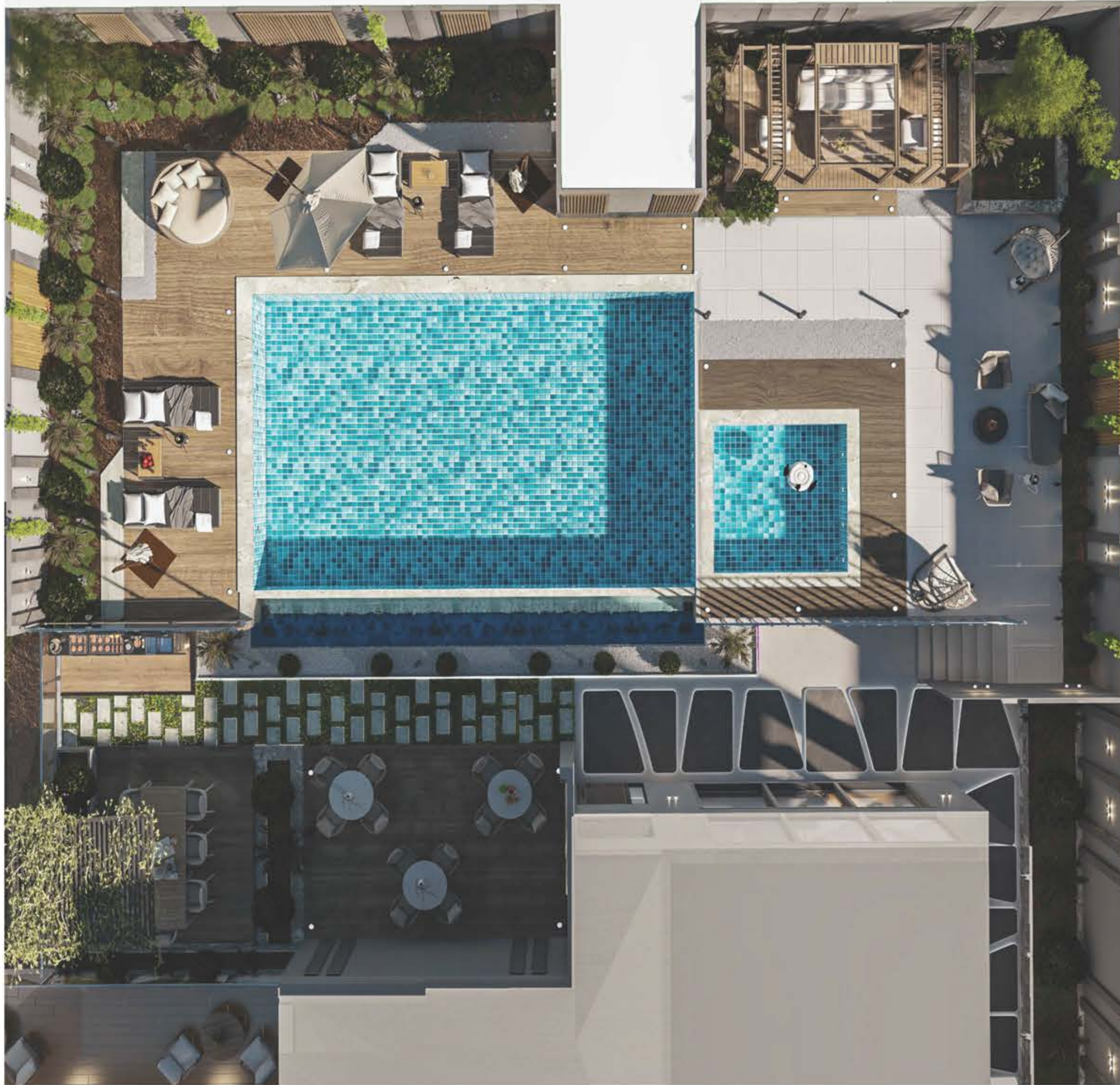
Look forward to a grand welcome and walk through the sophisticated hallways of the property's lobby area.



LIFT LOBBIES

At ROKANE G25, beautifully designed lobbies await you, and two elevators provide access to all floors of the building.





SWIMMING POOL

Indulge in life's beauty with a dip in ROKANE G25 leisure pools.



Sit and relax as you read a book on the bench, go for a stroll in the garden or just wander around - after a busy day of working hard , its good to slow down and recharge



LIVING ROOMS

Residents will enjoy bright and sunny living rooms with high ceilings and premium quality porcelain floor tiles throughout. Expansive open plan living and dining areas offer a wealth of customisation ideas and connect directly to a beautiful sunny terrace.



BEDROOMS

Studio apartments feature an open plan layout merging the living area with the bedroom which directly connects to the sunny private terrace. One bedroom properties offer a separate, stand-alone private master bedroom with an ensuite bathroom and fully-fitted wardrobes. Direct access to the terrace is also provided from the master bedroom.



BEDROOMS

Studio apartments feature an open plan layout merging the living area with the bedroom which directly connects to the sunny private terrace. One bedroom properties offer a separate, stand-alone private master bedroom with an ensuite bathroom and fully-fitted wardrobes. Direct access to the terrace is also provided from the master bedroom.



BATHROOMS

Timeless modern bathrooms offer spacious walk-in showers with tiled shower enclosures and branded wash basins in ensuite bathrooms.



KITCHENS

Beautiful open plan modern kitchens with neutral colour palettes provide the perfect environment for creating culinary delights and hosting family and guests.





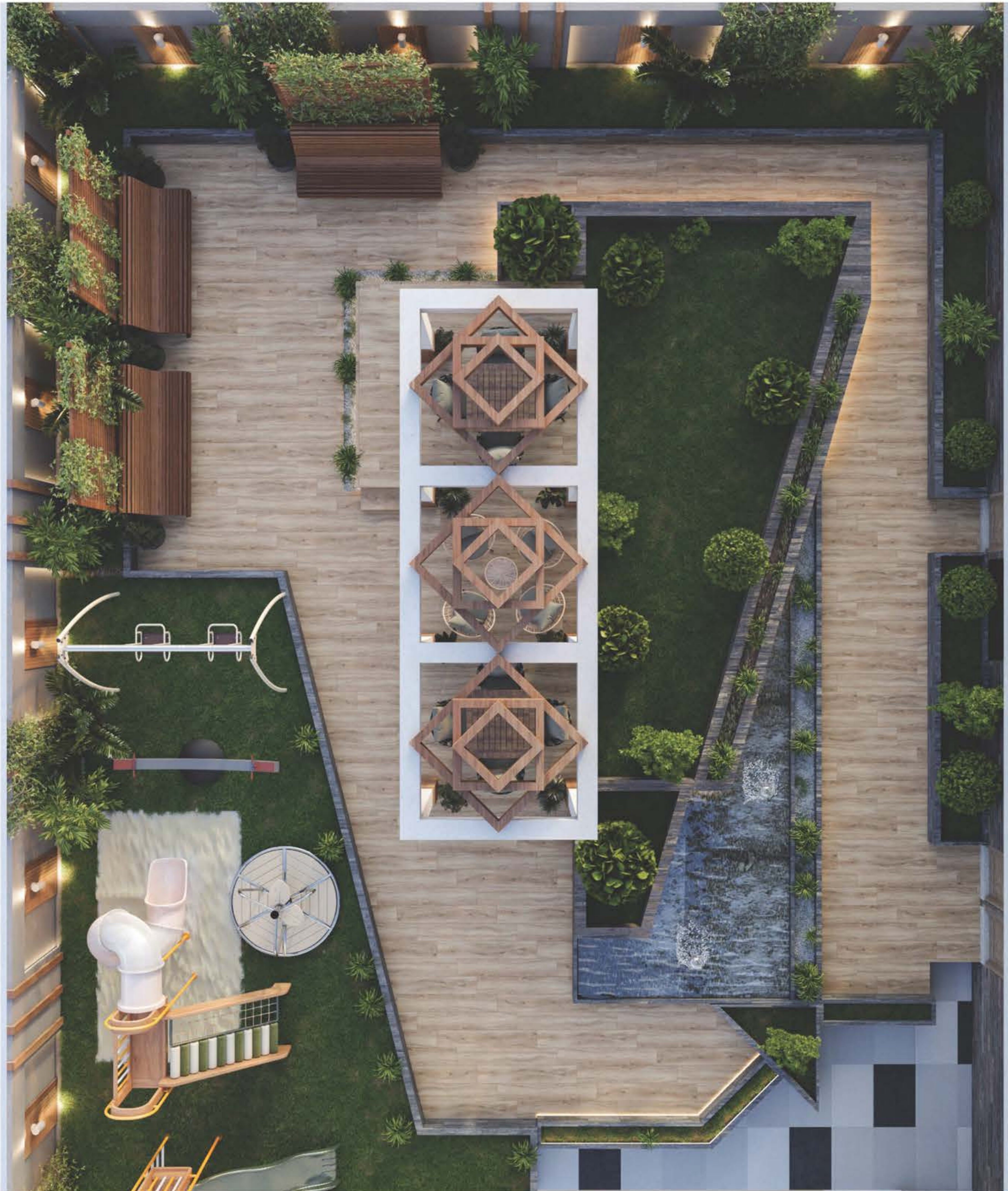
LANDSCAPE

Bask in the beauty of nature and the shimmer of city lights.

AMENITIES

Outdoor Facilities

- ADULT POOL
- KIDS WADING POOL
- FITNESS CENTER.
- GARDENS
- SOCIAL LOUNGE



LANDSCAPE

Bask in the beauty of nature and the shimmer of city lights.

AMENITIES

Outdoor Facilities

- OUTDOOR SETTING
- PERGOLA
- TOYS
- WATER AREA
- GREEN SPACES



