



ROSEMONT

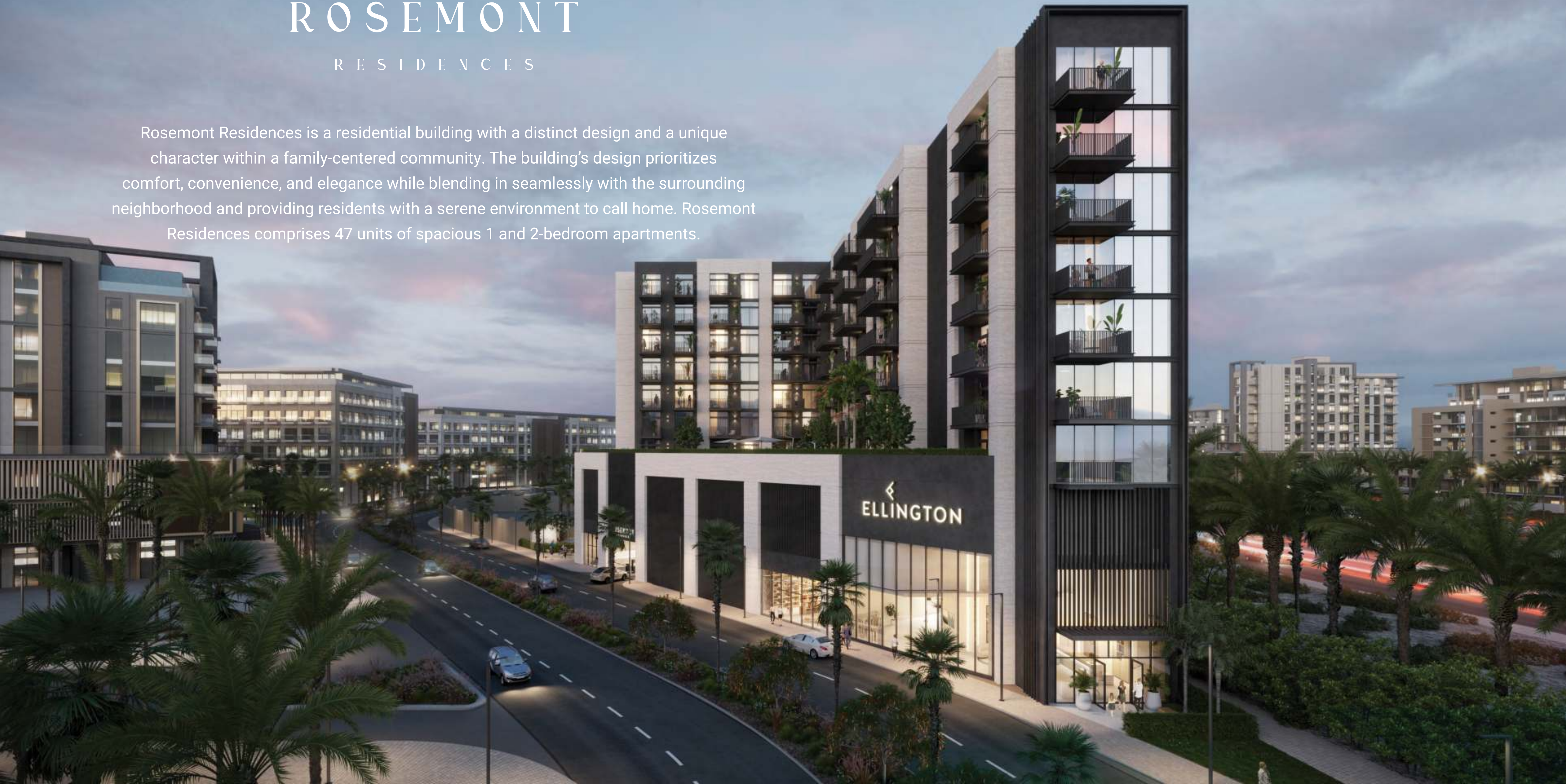
RESIDENCES

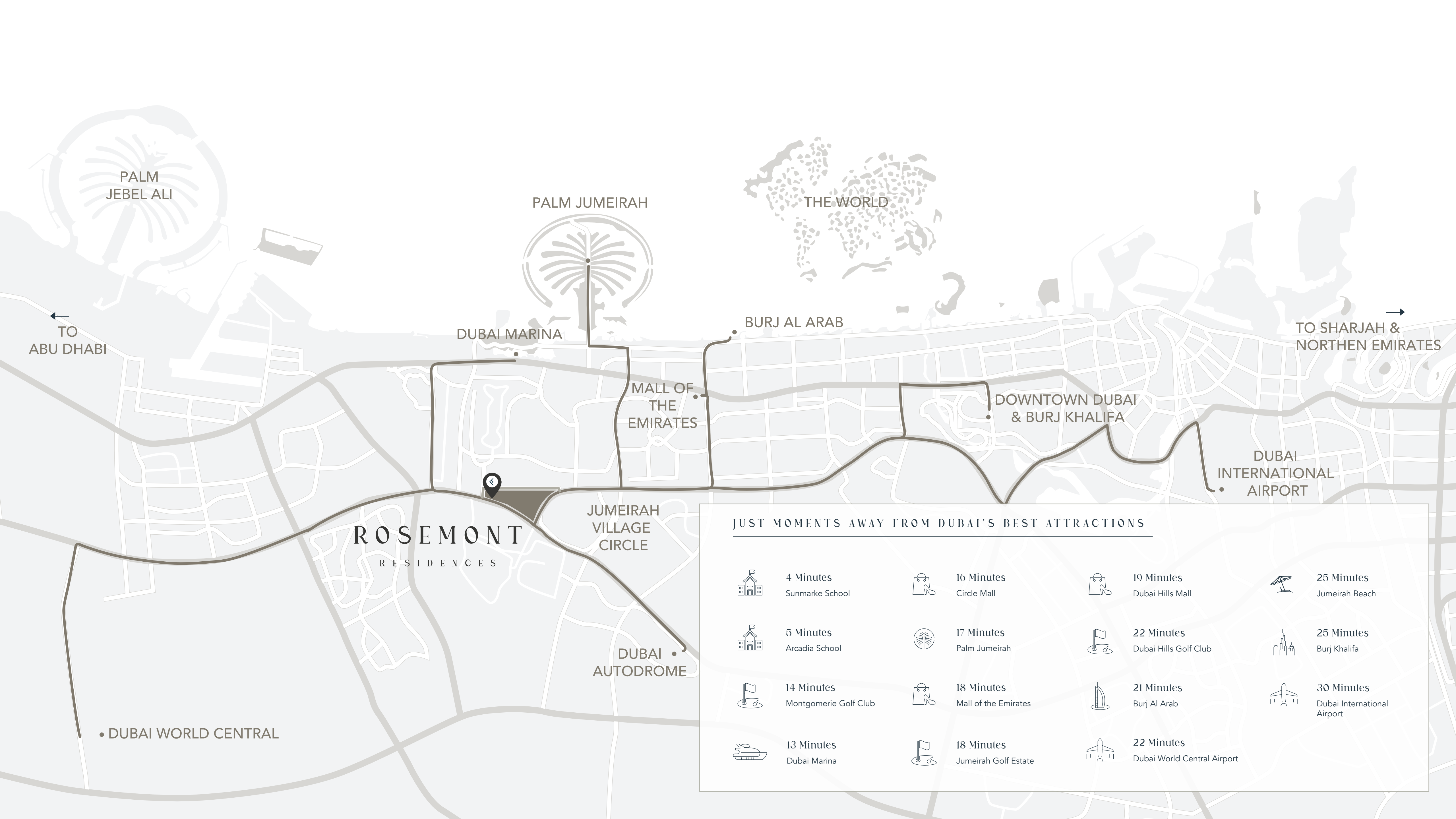
PROJECT BRIEF

ROSEMONT

RESIDENCES

Rosemont Residences is a residential building with a distinct design and a unique character within a family-centered community. The building's design prioritizes comfort, convenience, and elegance while blending in seamlessly with the surrounding neighborhood and providing residents with a serene environment to call home. Rosemont Residences comprises 47 units of spacious 1 and 2-bedroom apartments.





PALM JEBEL ALI

PALM JUMEIRAH



THE WORLD

TO ABU DHABI

DUBAI MARINA

BURJ AL ARAB

TO SHARJAH & NORTHERN EMIRATES

MALL OF THE EMIRATES

DOWNTOWN DUBAI & BURJ KHALIFA

DUBAI INTERNATIONAL AIRPORT

ROSEMONT RESIDENCES

JUMEIRAH VILLAGE CIRCLE

DUBAI AUTODROME

DUBAI WORLD CENTRAL

JUST MOMENTS AWAY FROM DUBAI'S BEST ATTRACTIONS



4 Minutes Sunmarke School



16 Minutes Circle Mall



19 Minutes Dubai Hills Mall



25 Minutes Jumeirah Beach



5 Minutes Arcadia School



17 Minutes Palm Jumeirah



22 Minutes Dubai Hills Golf Club



25 Minutes Burj Khalifa



14 Minutes Montgomerie Golf Club



18 Minutes Mall of the Emirates



21 Minutes Burj Al Arab



30 Minutes Dubai International Airport



13 Minutes Dubai Marina



18 Minutes Jumeirah Golf Estate



22 Minutes Dubai World Central Airport

JUMEIRAH VILLAGE TRIANGLE

Jumeirah Village Triangle is a distinctive family-friendly community surrounded by lush landscaped communal areas and parks. It is home to several mixes of villas, townhouses, and apartments with a thoughtful selection of entertainment and leisure options ideal for families.

Located in District 2 of Jumeirah Village Triangle
Rosemont Residences is close to Dubai Marina,
community parks, and international schools, yet away from
the hustle and bustle of the city.

- 01 Rosemont Residences
- 02 Community Parks
- 03 JVT Water Fountain
- 04 Arcadia School
- 05 JVT Pond
- 06 Soccer Field
- 07 Basketball Courts
- 08 Basketball Pitch
- 09 Tennis Courts
- 10 Sunmarke School
- 11 Supermarket
- 12 Al Khail Avenue Mall
- 13 Dog Park



DISTRICT

District 2

BUILDING CONFIGURATION

Ground Floor

2 Podium Floors

7 Residential Floors

UNIT TYPES

1 bedroom and 2 bedroom apartments

OWNERSHIP

Freehold

PARKING

1 parking space per apartment

ELEVATORS

2 passenger elevator

1 service elevator



ANTICIPATED
COMPLETION DATE

Q4 2025

ANTICIPATED
SERVICE CHARGE

AED 14 per sq.ft

SIZE RANGE PER
UNIT TYPE

1 Bedroom

From 798 sq. ft to 819 sq. ft

2 Bedrooms

From 1,024 sq. ft to 1,260 sq. ft

NUMBER OF UNITS
PER TYPE

1 bedroom = 19 units

2 bedrooms = 28 units



GROUND FLOOR
AMENITIES PLAN

- 01 MAIN ENTRANCE
- 02 LOBBY RECEPTION
- 03 LOBBY LOUNGE
- 04 LIBRARY WALL
- 05 COMMUNAL TABLE
- 06 LIFT LOBBY
- 07 VEHICULAR ENTRANCE / EXIT
- 08 PARKING FOR PEOPLE OF DETERMINATION
- 09 BICYCLE PARKING
- 10 DOG WASH AREA
- 11 DOG PARK



FIRST FLOOR AMENITIES PLAN

- 01 LEISURE AND LOUNGE POOL
- 02 POOL SUN LOUNGERS
- 03 OUTDOOR SHOWER
- 04 TOWEL STATION
- 05 ACCESS TO POOL DECK
- 06 OUTDOOR DINING AREA
- 07 COURTYARD
- 08 HERB GARDEN
- 09 KIDS PLAY AREA
- 10 OUTDOOR KIDS PLAY AREA
- 11 OUTDOOR LOUNGE AREA
- 12 FEMALE CHANGE ROOM
- 13 BATHROOM FOR PEOPLE OF DETERMINATION
- 14 MALE CHANGING ROOM
- 15 YOGA AREA
- 16 FITNESS STUDIO
- 17 LIFT LOBBY





ELLINGTON
PROPERTIES

ROSEMONT
RESIDENCES

BE WARMLY WELCOMED



DIVE INTO YOUR PERSONAL OASIS



UNLEASH YOUR POTENTIAL &
ELEVATE YOUR MIND



WHERE FUN & LEARNING
COME TOGETHER



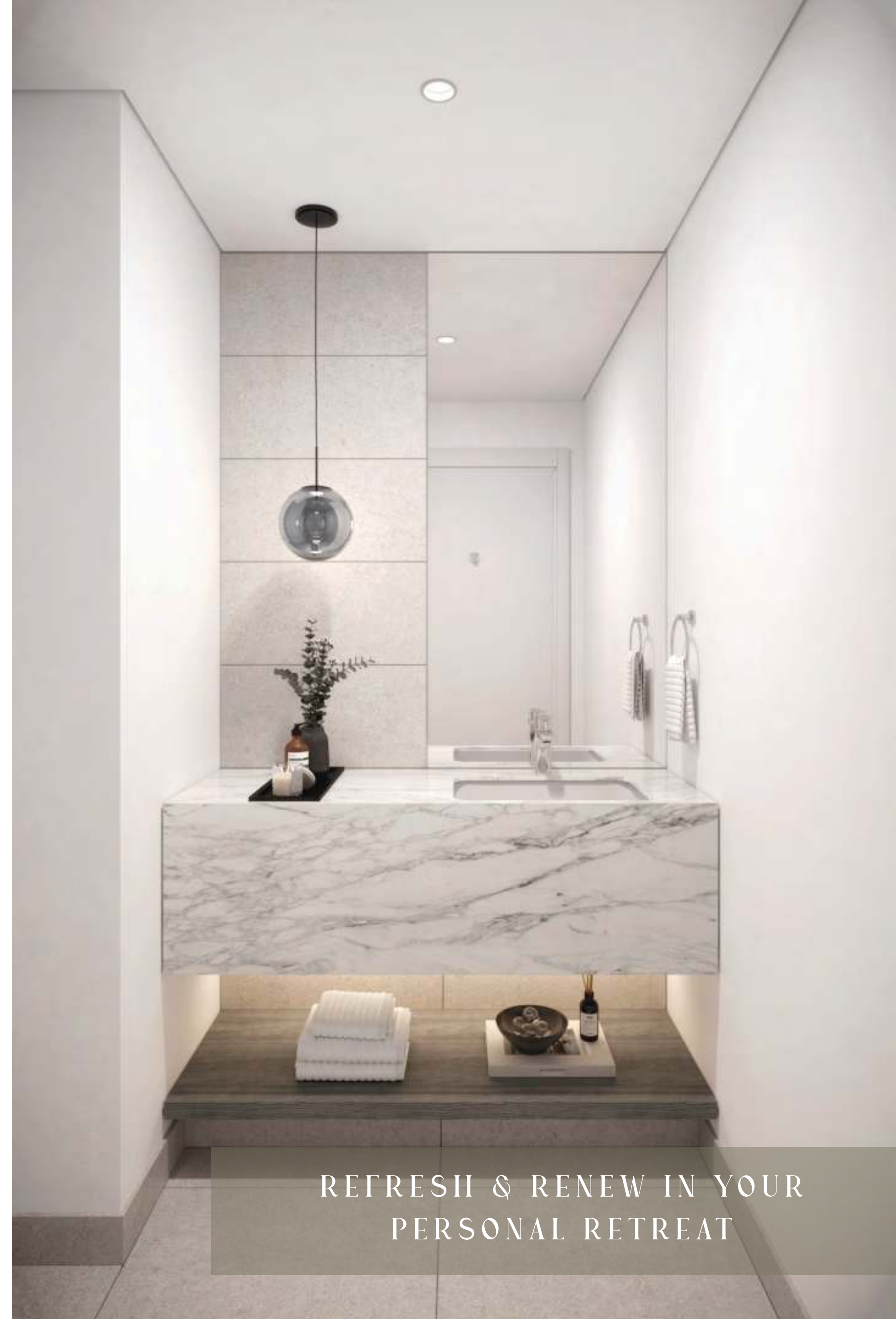
EMBRACE THE ELEGANCE OF
CONTEMPORARY LIVING



WHERE THE HEART OF THE HOME
MEETS THE ART OF COOKING



UNWIND IN SOPHISTICATED
& COMFORT

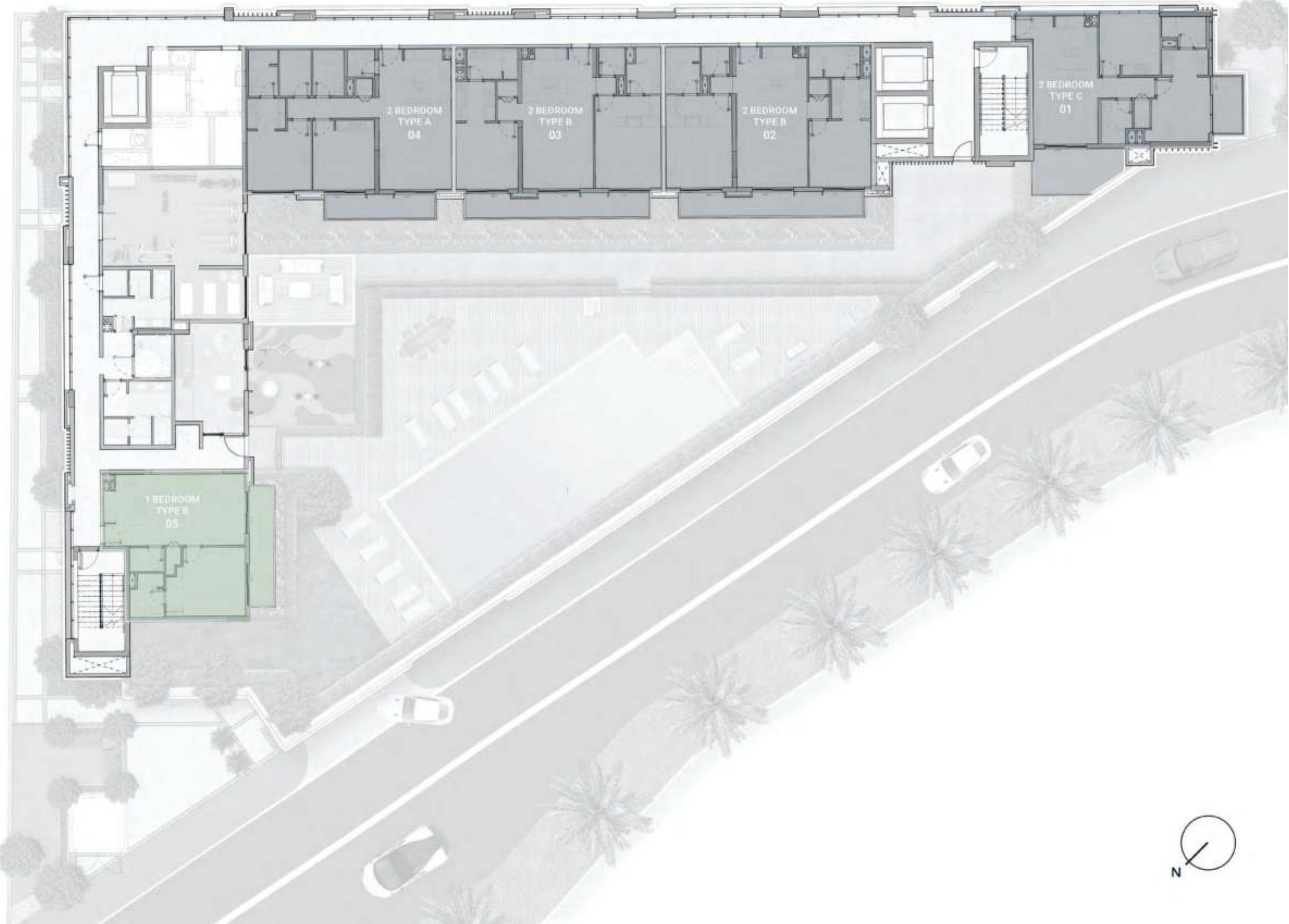


REFRESH & RENEW IN YOUR
PERSONAL RETREAT

TYPICAL PLAN

1ST FLOOR PLAN

-  1 BEDROOM APARTMENTS
-  2 BEDROOM APARTMENTS



TYPICAL PLAN

2ND - 7TH FLOOR PLAN

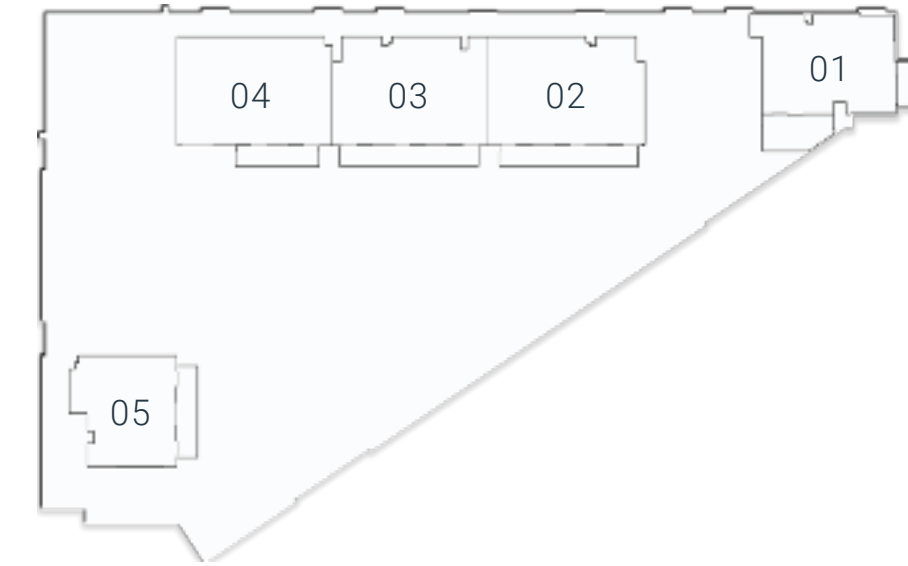
- 1 BEDROOM APARTMENTS
- 2 BEDROOM APARTMENTS



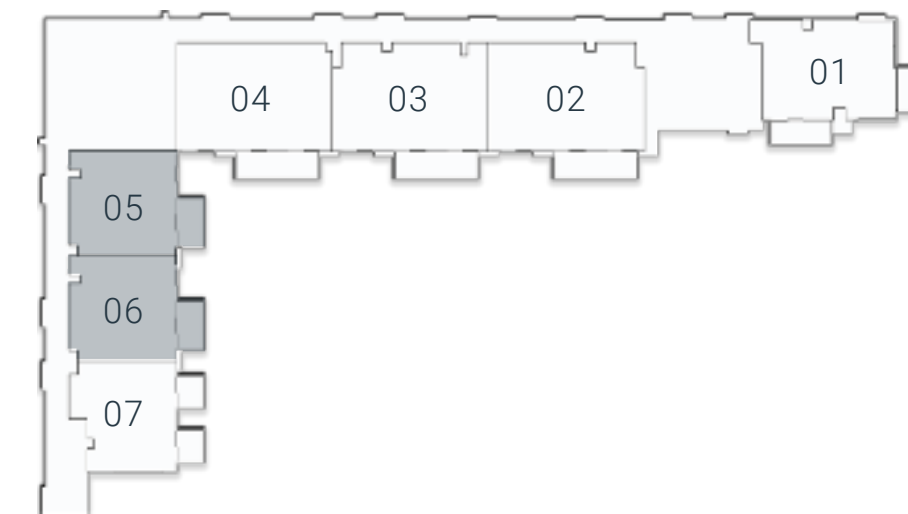
FLOOR PLAN



1ST Floor



2ND Floor - 7TH Floor

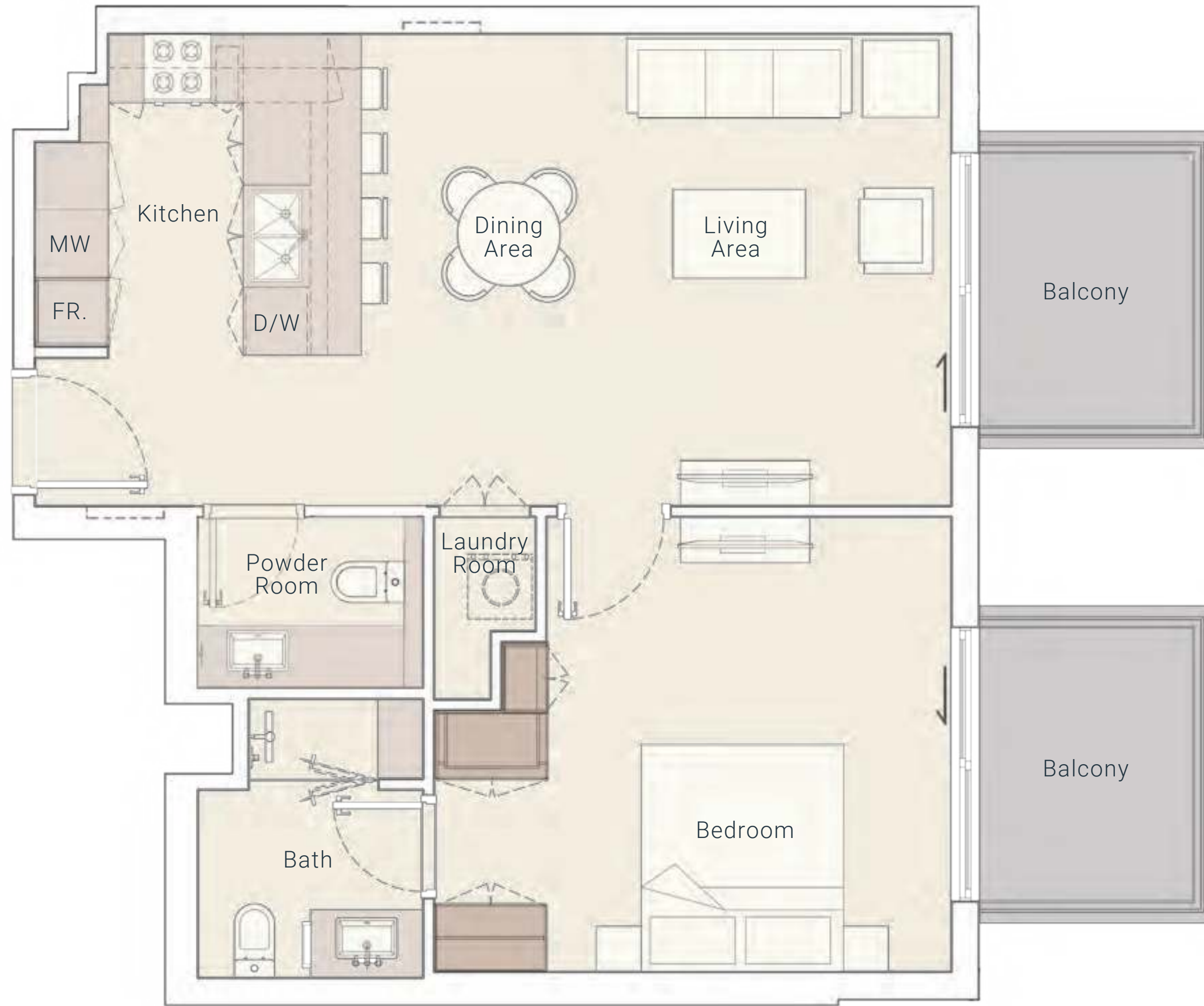


Internal Living Area 710.20 sq.ft.

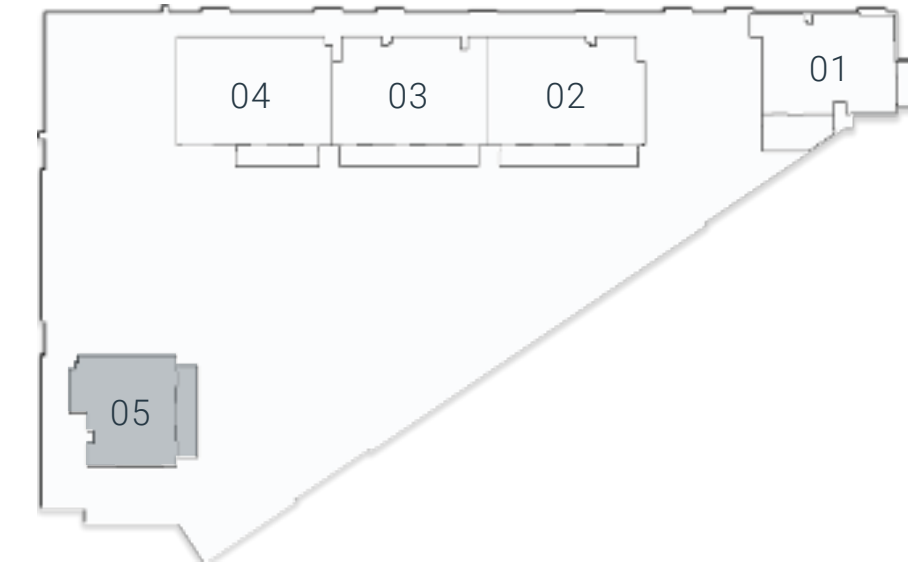
Outdoor Living Area 88.16 sq.ft.

Total Living Area 798.36 sq.ft.

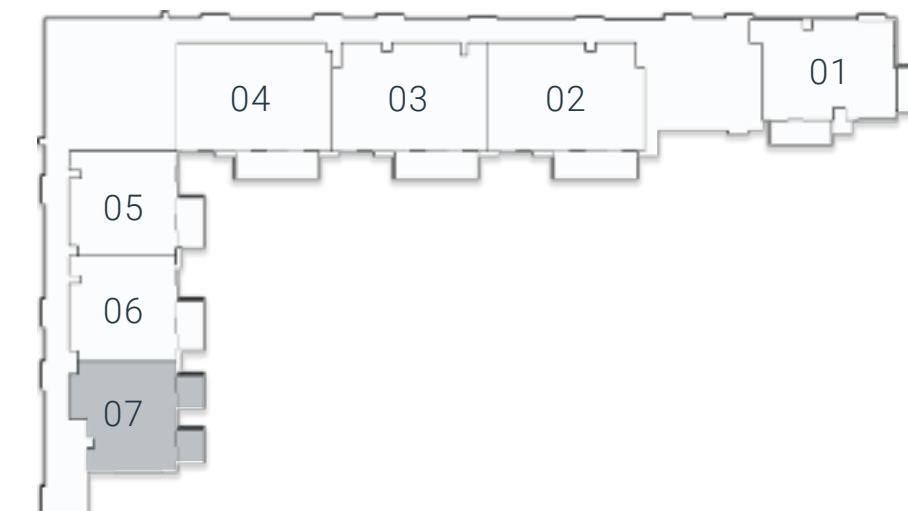
1 BEDROOM TYPE A



1ST Floor



2ND Floor - 7TH Floor



Internal Living Area 695.56 sq.ft.

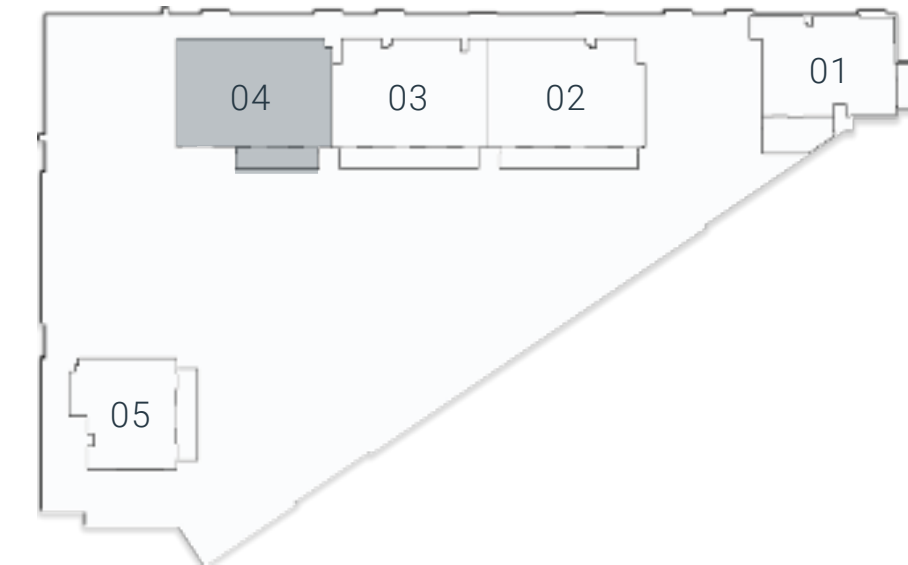
Outdoor Living Area 117.11 sq.ft.

Total Living Area 812.68 sq.ft.

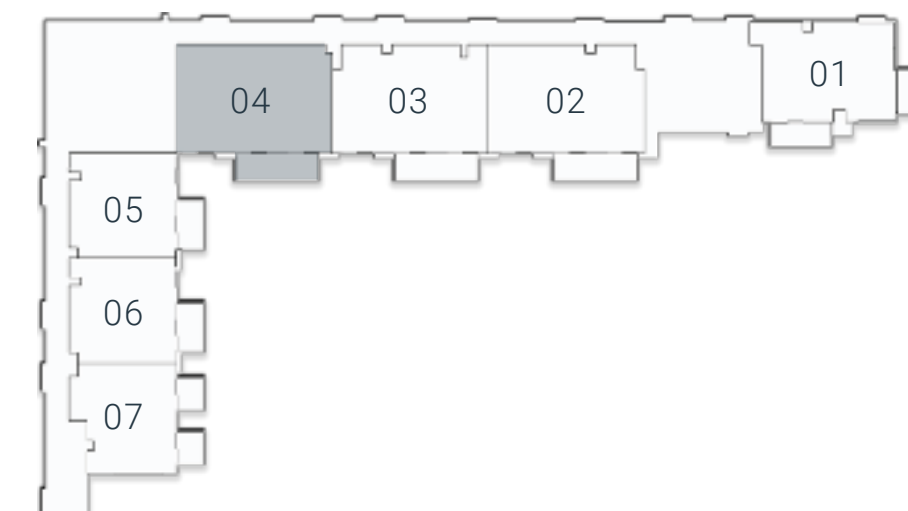
1 BEDROOM TYPE B



1ST Floor

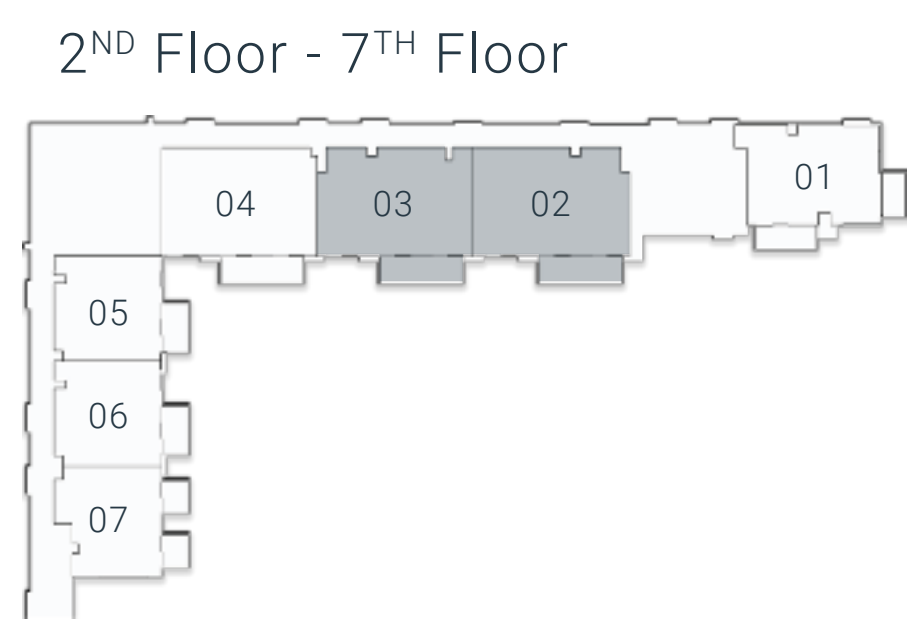
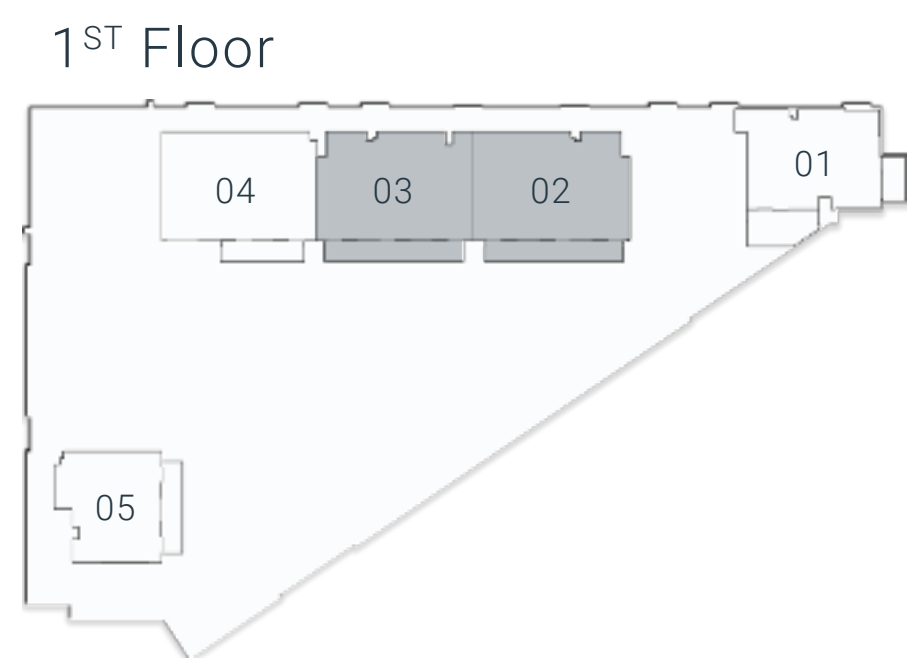
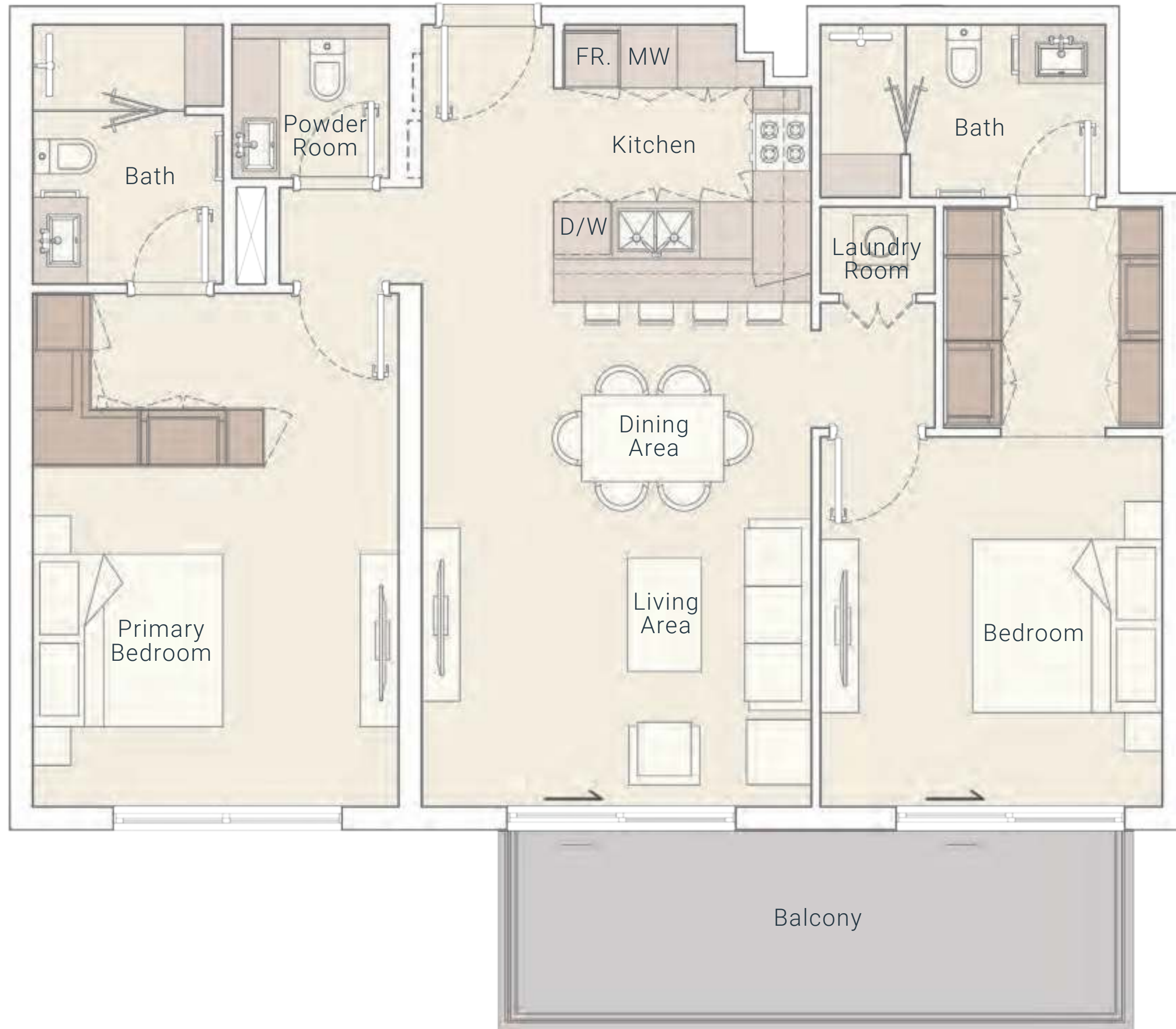


2ND Floor - 7TH Floor



Internal Living Area 1080.80 sq.ft.	Outdoor Living Area 147.36 sq.ft.	Total Living Area 1228.16 sq.ft.
-------------------------------------	-----------------------------------	----------------------------------

2 BEDROOM TYPE A



Internal Living Area 1073.81 sq.ft.

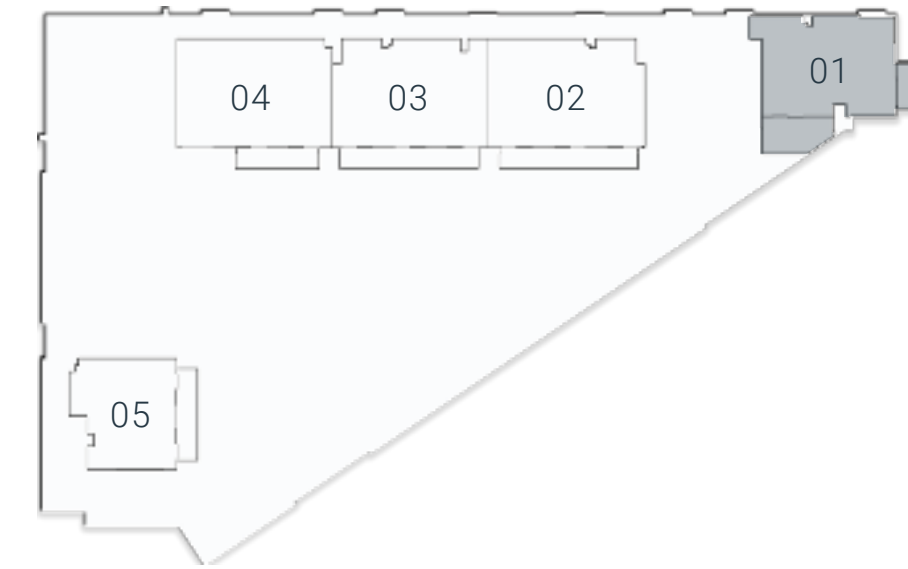
Outdoor Living Area 147.36 sq.ft.

Total Living Area 1221.17 sq.ft.

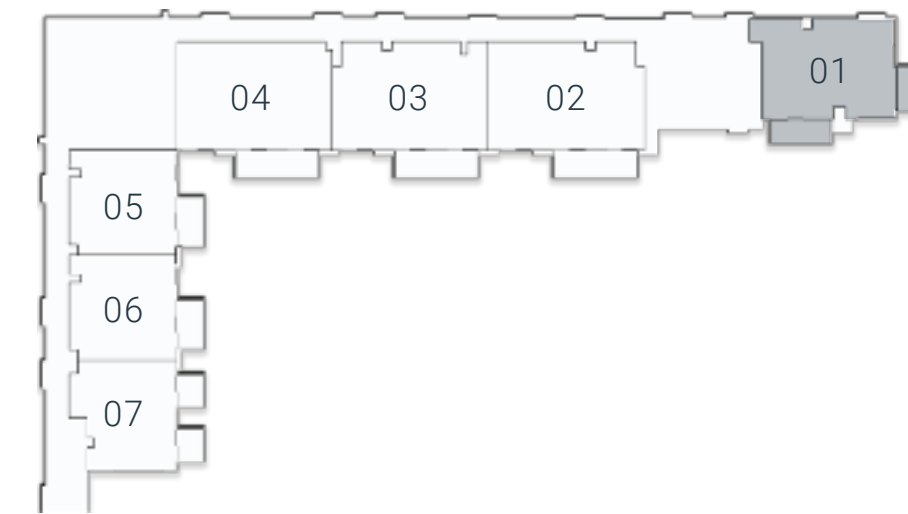
2 BEDROOM TYPE B



1ST Floor



2ND Floor - 7TH Floor



Internal Living Area 859.07 sq.ft.

Outdoor Living Area 165.55 sq.ft.

Total Living Area 1024.62 sq.ft.

2 BEDROOM TYPE C

PAYMENT PLAN

20%

At the time
of booking

10%

60 days after
the reservation

10%

120 days after
the reservation date

5%

On completion of 20%
construction of the project

5%

On completion of 30%
construction of the project

5%

On completion of 40%
construction of the project

5%

On completion of 50%
construction of the project

5%

On completion of 60%
construction of the project

5%

On completion of 70%
construction of the project

30%

On completion