

DUBAI LAND

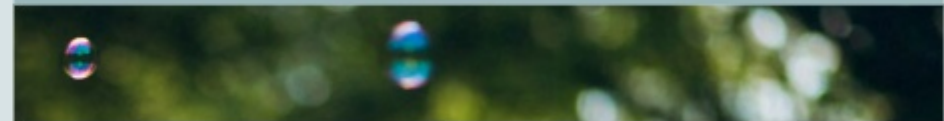


برج - رُكَّانُ  
RUKAN - TOWER



جوهر الحياة

THE ESSENCE  
OF LIFE



—  
YOUR FUTURE  
INVESTMENT

## REPORTAGE PROPERTIES

Since being established in 2014, Reportage Properties has aimed to provide innovative housing solutions by developing and delivering property in Abu Dhabi and Dubai which offer our investors outstanding value and are completed over a timely period. Reportage Properties is committed to creating homes with unrivalled standards of living from a household brand you can rely on. Reportage Prime is a subsidiary under the umbrella of Reportage Properties.

## ريپورتاج العقاريه

تهدف ريبورتاج العقارية، منذ تأسيسها في عام ٢٠١٤، إلى توفير حلول سكنية مبتكرة من خلال تطوير وتسليم المشاريع العقارية في أبوظبي ودبي والتي تقدم لمستثمريها قيمة فريدة من نوعها حيث يتم الالتزام بتسليم المشاريع العقارية في الموعد المحدد. تلتزم ريبورتاج العقارية بتصميم منازل ذات مستويات معيشية لا مثيل لها وتطمح لتكون علامة تجارية يمكنك الاعتماد عليها، ريبورتاج برايم هي شركة تابعة لريبورتاج العقارية.



## ABOUT DUBAI LAND

Dubailand stretches out across an immense 3 billion square feet in the heart of the city, making it the largest district in Dubai. The area was designed to be Dubai's entertainment hub and is divided between a vibrant mix of vast residential communities and popular leisure attractions. Well-known residential projects and communities such as Al Barari and Arabian Ranches fall within the district, as well as the anticipated upcoming mega-project of Mohammed Bin Rashid City.

## عن دبي لاند

تمتد دبي لاند على مساحة هائلة تبلغ 3 مليار قدم مربع في قلب المدينة، مما يجعلها أكبر منطقة في دبي، تم تصميم المنطقة لتكون مركزاً ترفيهياً في دبي وتنقسم إلى مزيج نابض بالحياة من المجتمعات السكنية الفسيحة وأماكن ترفيهية شهيرة. تقع المشاريع والمجتمعات السكنية المعروفة مثل البراري والمرايح العربية ضمن المنطقة، بالإضافة إلى المشروع الضخم المتوقع لمدينة محمد بن راشد.

## DUBAI'S ENTERTAINMENT HUB



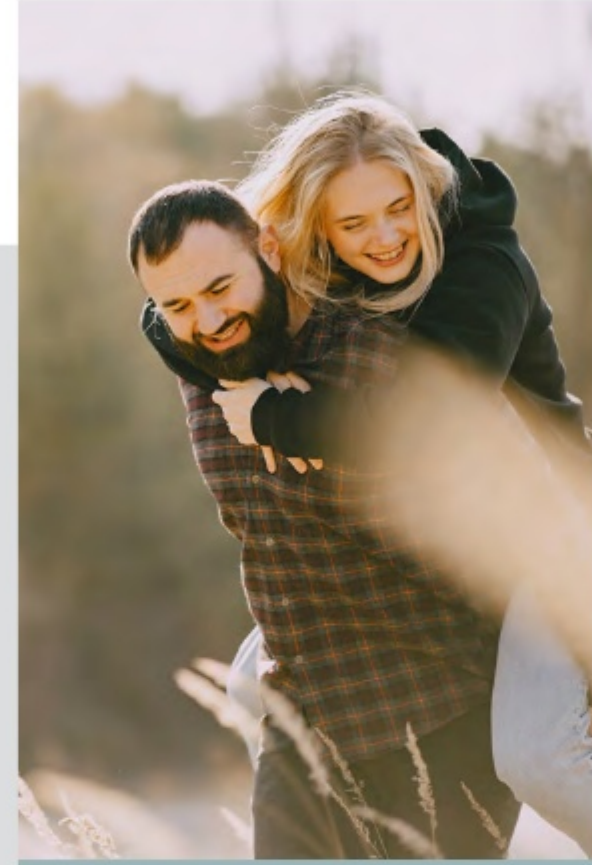
## PREMIUM LOCATION

Rukan Tower is in a completely well serviced community fully equipped to cater to the residents every need. Rukan Tower is surrounded by Rukan Lofts, large parks, shopping centres, cycling tracks and a swimming pool. Due to its location in Dubai Land, Rukan Tower also provides residents excellent connectivity to many other key areas such as Downtown Dubai, Dubai Creek Harbour and Dubai Marina.

## موقع متميز

يقع برج ركان في مجتمع يتمتع بخدمات ممتازة، مجهز بالكامل لتلبية كل احتياجات السكان. يحيط ببرج ركان، ركان لوفتس وحدائق كبيرة ومراكز التسوق ومسارات لركوب الدراجات ومسبح. بسبب موقعه في دبي لاند، يوفر برج ركان اتصالاً ممتازاً للسكان بالعديد من المناطق الرئيسية الأخرى مثل داون تاون دبي وميناء خور دبي ومرسى دبي.

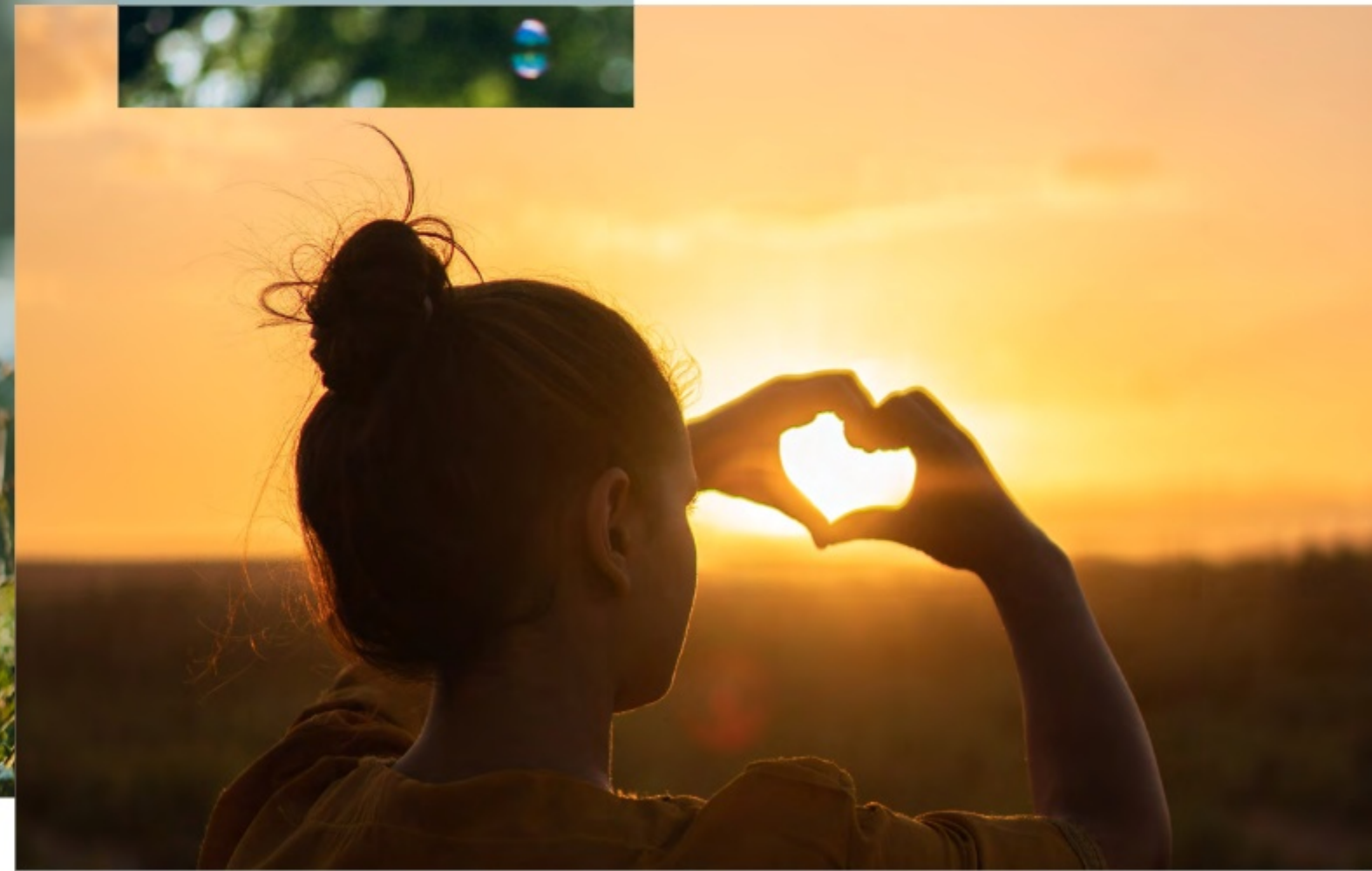
A PLACE  
YOU CAN CALL  
HOME





—  
WHERE TRAN  
QUILITY IS  
A WAY OF LIFE

RUKAN - TOWER



### سهولة الحركة لأهم المواقع

15 MINUTES | GLOBAL VILLAGE

20 MINUTES | MIRACLE GARDEN

15 MINUTES | HAMDAN SPORTS COMPLEXES

25 MINUTES | DUBAI INTERNATIONAL AIRPORT

15 MINUTES | IMG WORLDS OF ADVENTURE

25 MINUTES | MALL OF THE EMIRATES

20 MINUTES | BURJ KHALIFA/ DUBAI MALL

30 MINUTES | HAMDAN SPORTS COMPLEXES



STAY WELL CONNECTED





UNIQUE  
MASTER PLAN

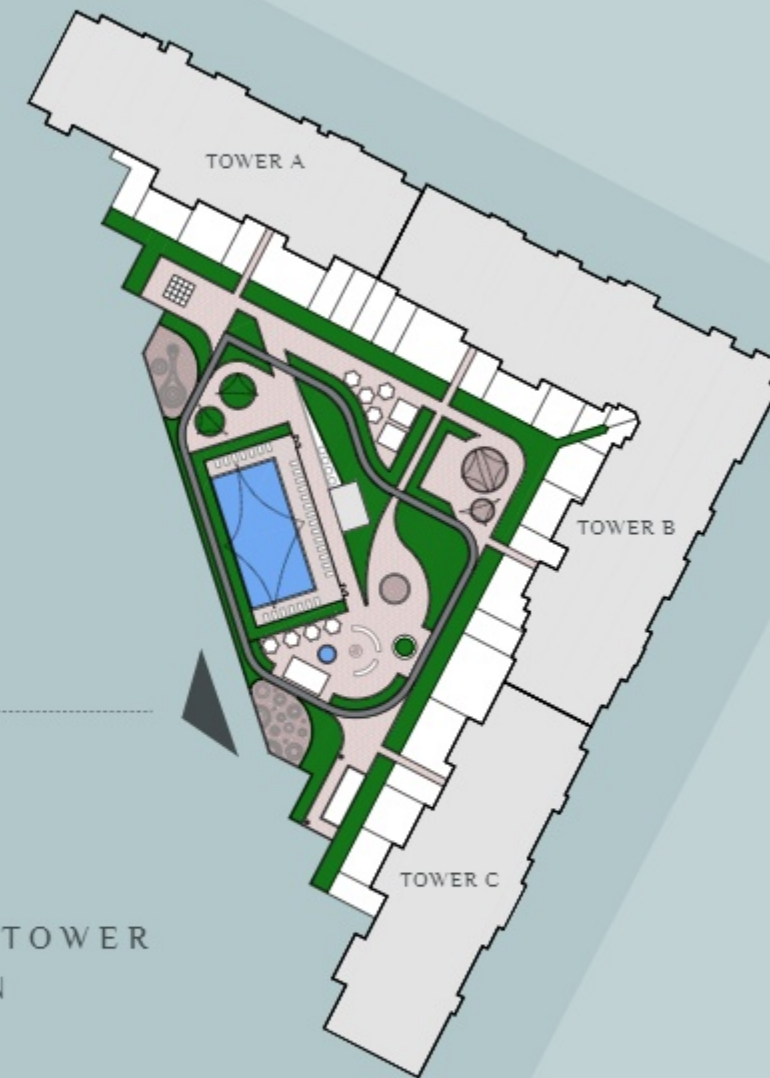


RUKAN TOWER COMMUNITY

A mid-rise residential building in a gated community with exceptional resort like facilities positioned conveniently right next to the Rukan Community entrance in Dubai Land. Rukan Tower is made up of three connected towers: Tower A, Tower B and Tower C which offer 608 apartments with various designs and area options.

مجتمع برج رُكان

مبنى سكني متوسط الارتفاع في مجتمع مسور يتمتع بخدمات استثنائية ويقع بشكل ملائم بجوار مدخل مجتمع ركان في دبي لاند. يتكون برج ركان من ثلاثة أبراج متصلة: برج A، برج B وبرج C والتي توفر 608 شقق بتصميمات مختلفة وخيارات عديدة للمساحات.



RUKAN - TOWER  
KEY PLAN





EXPERIENCE A  
HIGHER STANDARD  
OF LIVING

### RUKAN TOWER

A beautifully designed residential building providing you with the lifestyle you deserve. Rukan Tower offers exceptional facilities in Dubai Land, next to Arabian Ranches and is located in a unique location in the Rukan Community while presenting extraordinary views of the surrounding swimming pools and greenery.

### برج رُكان

مبنى سكني رائع مصمم ليوفر لك نمط الحياة الذي تستحقه. يوفر برج ركان مرافق استثنائية في دبي لاند ، بجانب المزارع العربية ، ويتمتع بموقع مميز في مجتمع روكان، بينما يقدم إطلالات استثنائية على المساح والمساحات الخضراء المحيطة.





RIGHT AT  
THE ENTRANCE  
OF RUKAN  
COMMUNITY

Rukan Tower's convenient location right at the entrance of Rukan Community provides easy access to residents and visitors alike coming into the community.

يوفر موقع برج ركان، الذي يقع عند مدخل مجتمع ركان، سهولة الحركة إلى السكان والزوار القادمين إلى المجتمع.





—  
YOUR  
COMFORT  
IS OUR  
PRIORITY



LIVING ROOM | SLEEK INTERIORS WITH CLEAN LINES, NEUTRAL TONES & METICULOUS FINISHES.



LIVING AT  
ITS BEST



Every apartment radiates with natural lighting and overlooks the Rukan Community to provide beautiful views to the residents of the surrounding areas from main roads, to pools, to villas.

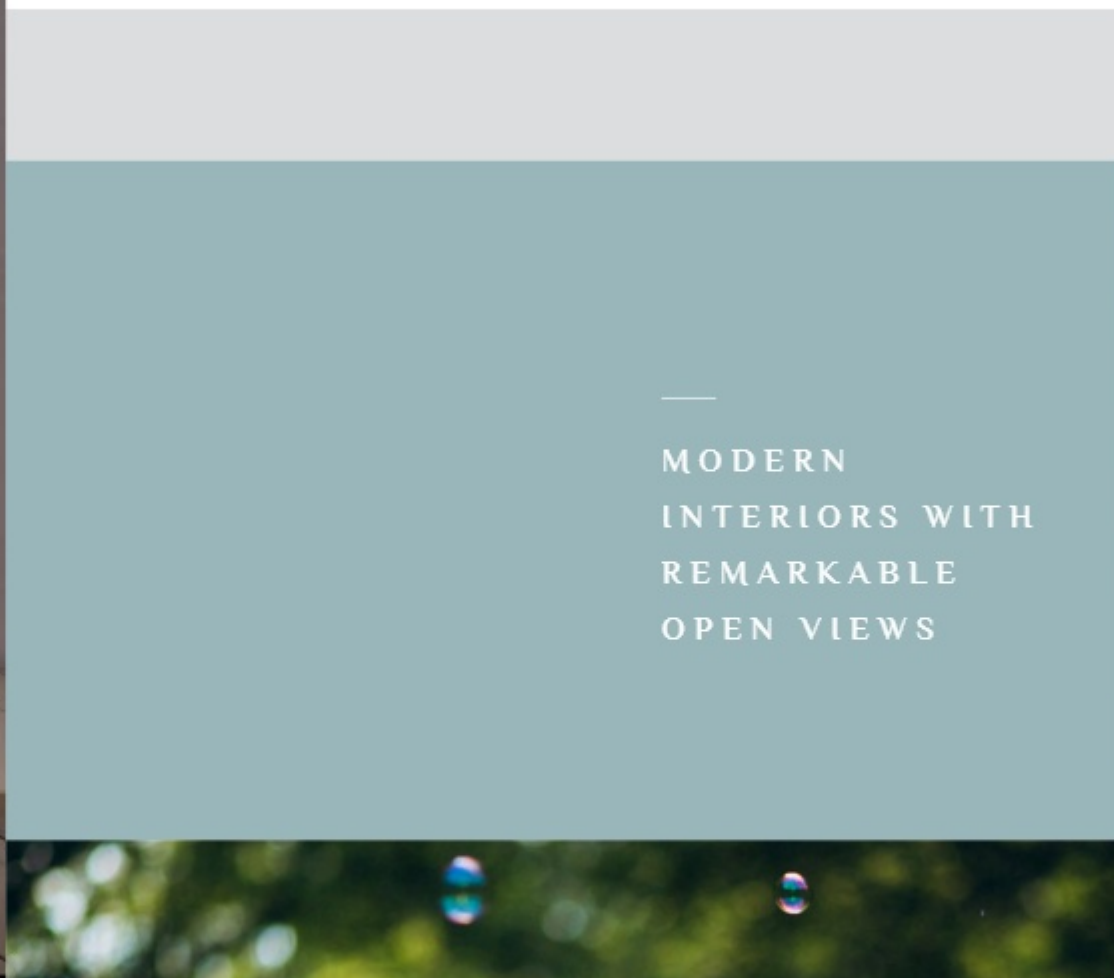
تمتع كل شقة بإضاءة طبيعية وتطل على مجتمع ركان لتوفير مناظر جميلة لسكان المناطق المحيطة من الطرق الرئيسية إلى حمامات السباحة وكذلك الفيلات.



BEDROOM | NATURAL LIGHT RADIATING THROUGH EVERY SPACE



STUDIO | UNIQUE DESIGNS WITH EXCEPTIONAL VIEWS



—  
MODERN  
INTERIORS WITH  
REMARKABLE  
OPEN VIEWS





—  
BE PART OF A  
CONNECTED  
COMMUNITY

RUKAN - TOWER



## AMENITIES AND FACILITIES

  
Landscape Gardens  
(Zen Garden, Art Garden,  
Yoga Garden and Planter Areas)  
حدائق المناظر الطبيعية

  
GYM  
صالة ألعاب رياضية


  
Mosque  
مسجد

  
Covered & Uncovered  
Parking Areas  
مواقف مغطاه / غير  
مغطاه للسيارات

  
Designated BBQ Areas  
مناطق مخصصة للشواء

  
12 Large Lifts  
١٢ مصعد كبير

  
Swimming pools  
مساح

  
Running tracks  
مسارات للجري

  
Private Terrace/Balcony  
شرفات خاصة

  
Pet Area  
منطقة لعب للحيوانات الأليفة





RUKAN - TOWER

## UNIT FEATURES

- Kitchen cabinets and countertops
- Balconies as per unit plan
- Built-in wardrobes in bedrooms
- Fully tiled bathrooms, in-suites, and guest toilets, wherever applicable
- Double glazed windows
- Central air conditioning

برج - رُكان  
RUKAN - TOWER

ريپورتاج العقارية  
**Reportage.**  
Properties

Abu Dhabi | Head Office  
Tamouh Tower  
27<sup>th</sup> Floor, Al Reem Island  
P.O. Box: 111949  
United Arab Emirates  
Phone: +971 2 204 3300  
info@reportageuae.com

Dubai Office  
Oberoi Centre  
3<sup>rd</sup> Floor, Business Bay  
P.O. Box: 27446  
United Arab Emirates  
Phone: +971 4 240 5556  
info@reportageuae.com

Escrow Account Details  
Account Name: Rukan Escrow  
Account No.: 002393135911  
IBAN No.: AE550070035911393101002  
Currency: AED  
Swift Code: ARAIAEAD

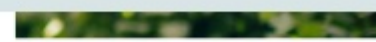
For more information, visit [reportageuae.com](http://reportageuae.com)  
or call 800 7755 2 | +971 50 244 1078







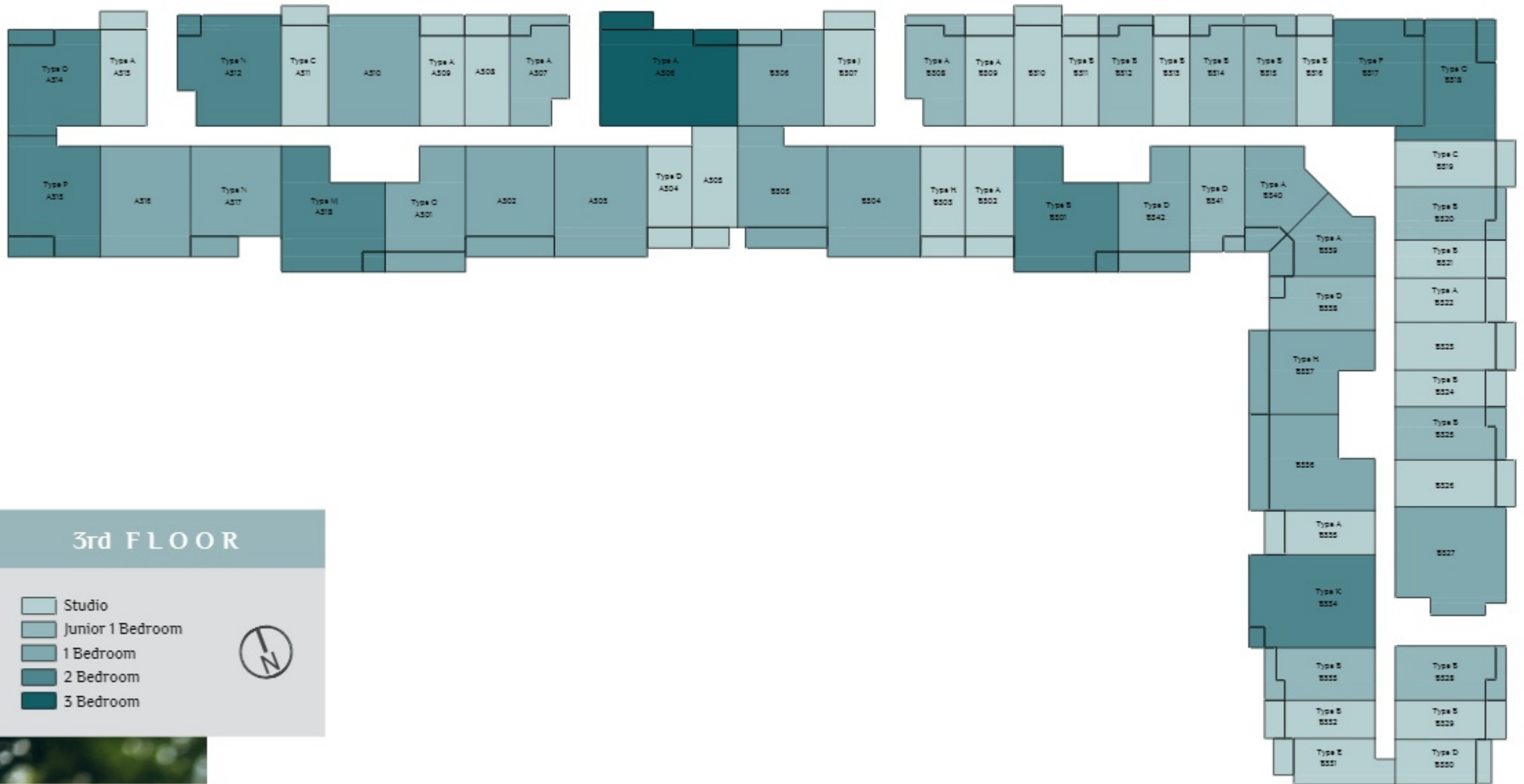
برج - رُكان  
RUKAN - TOWER







DISCLAIMER "All drawings and dimensions are approximates. Drawings are not to scale and are subjects to change without notice. The developer reserves the right to make revisions. The units are taken from the typical floor of the building and columns may vary in size depending on the floor level. The furnishings and accessories shown are for representation only. The length and width of the unit and balcony varies depending on which floor and which orientation the unit is located within the building to comply with the building authority regulations."



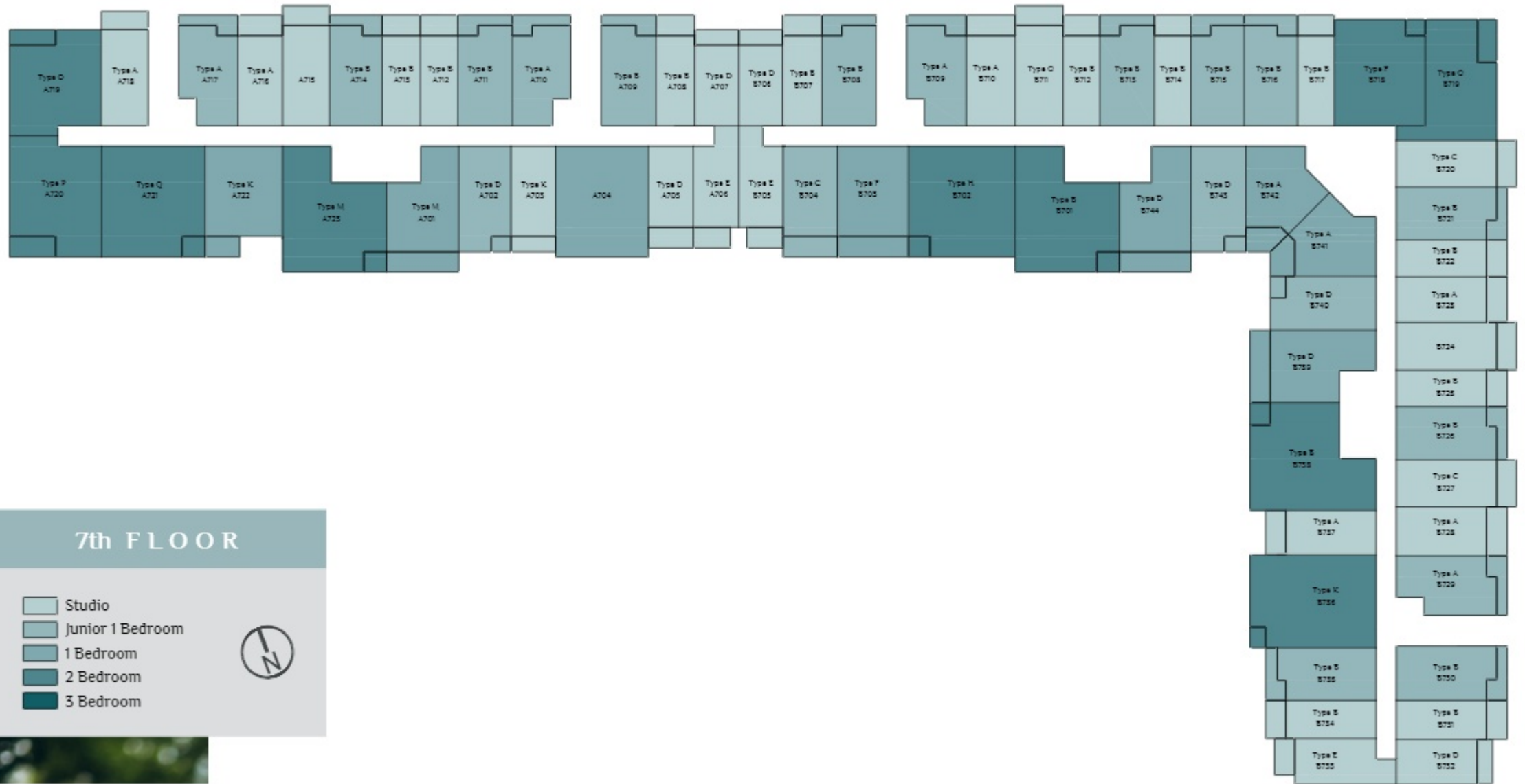
DISCLAIMER "All drawings and dimensions are approximates. Drawings are not to scale and are subjects to change without notice. The developer reserves the right to make revisions. The units are taken from the typical floor of the building and columns may vary in size depending on the floor level. The furnishings and accessories shown are for representation only. The length and width of the unit and balcony varies depending on which floor and which orientation the unit is located within the building to comply with the building authority regulations."







DISCLAIMER "All drawings and dimensions are approximates. Drawings are not to scale and are subjects to change without notice. The developer reserves the right to make revisions. The units are taken from the typical floor of the building and columns may vary in size depending on the floor level. The furnishings and accessories shown are for representation only. The length and width of the unit and balcony varies depending on which floor and which orientation the unit is located within the building to comply with the building authority regulations."







STUDIO TYPE - A



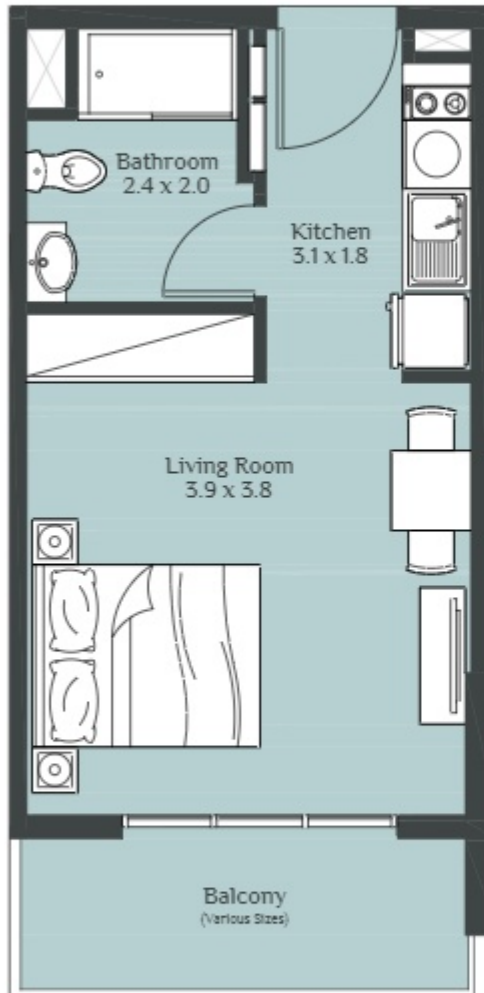
STUDIO TYPE - B



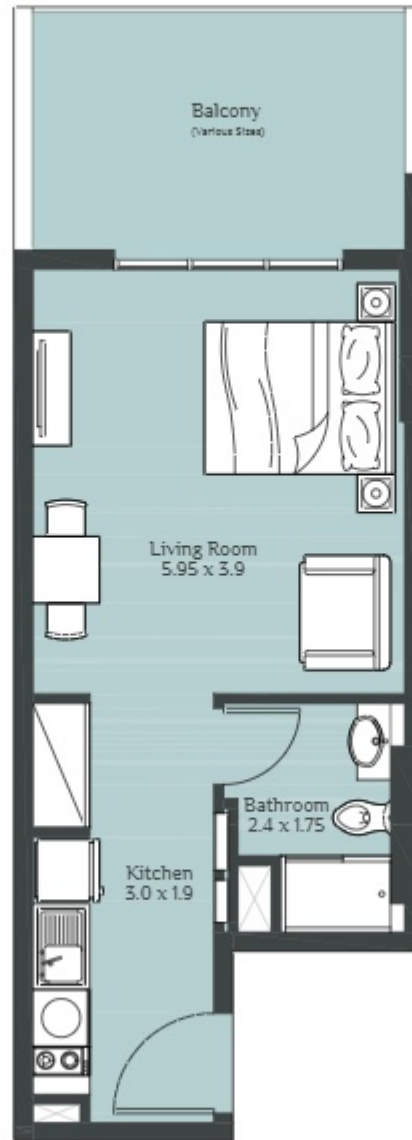
STUDIO TYPE - C



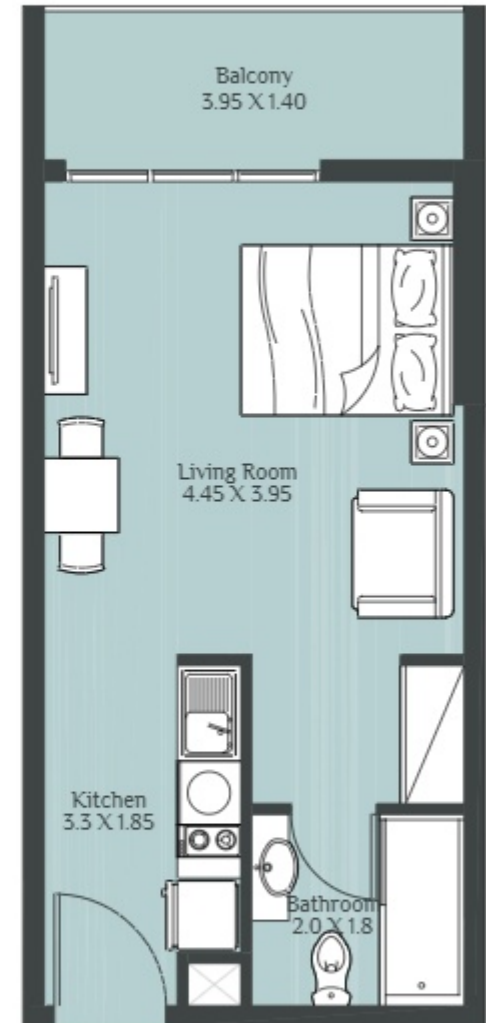
STUDIO TYPE - D



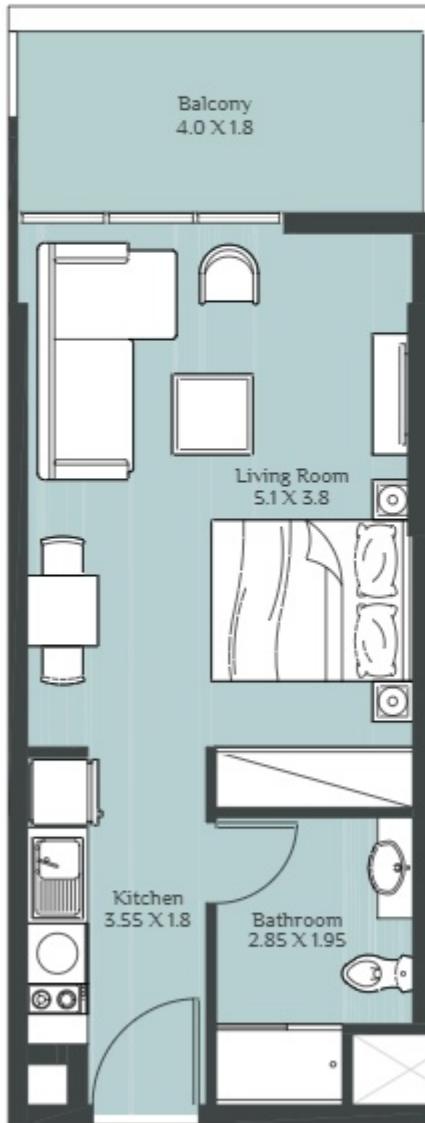
STUDIO TYPE - E



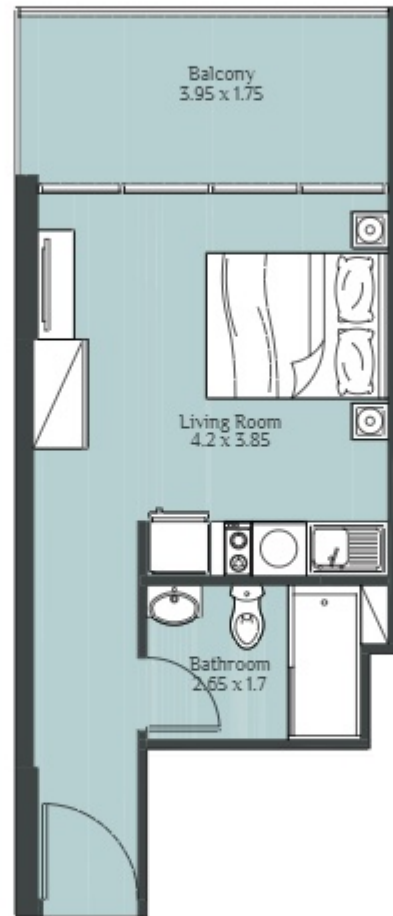
STUDIO TYPE - F



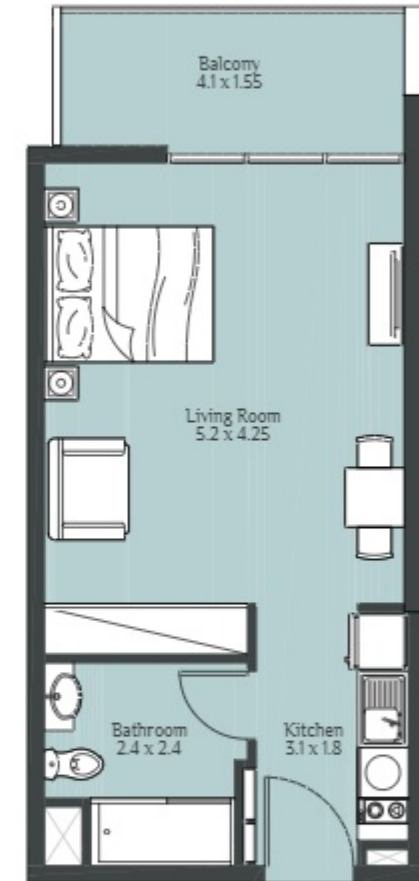
STUDIO TYPE - G



STUDIO TYPE - H



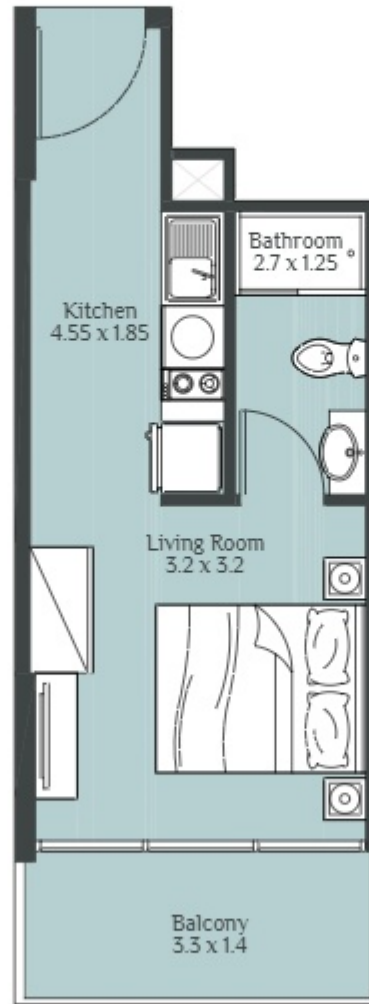
STUDIO TYPE - J



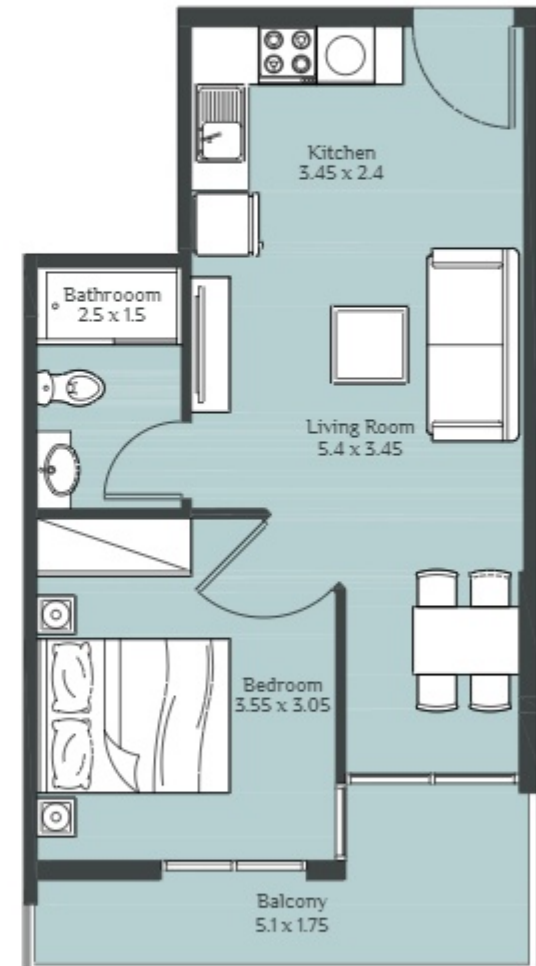
STUDIO TYPE - K



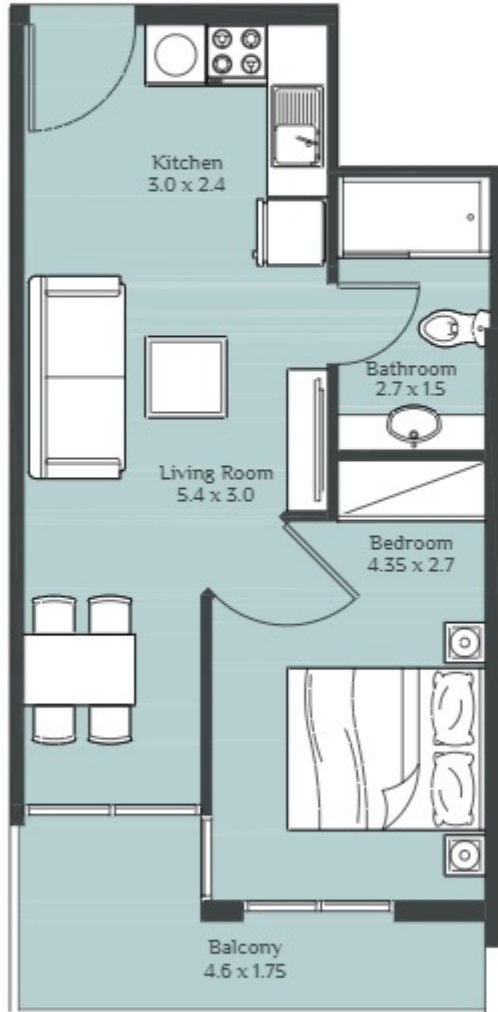
STUDIO TYPE - L



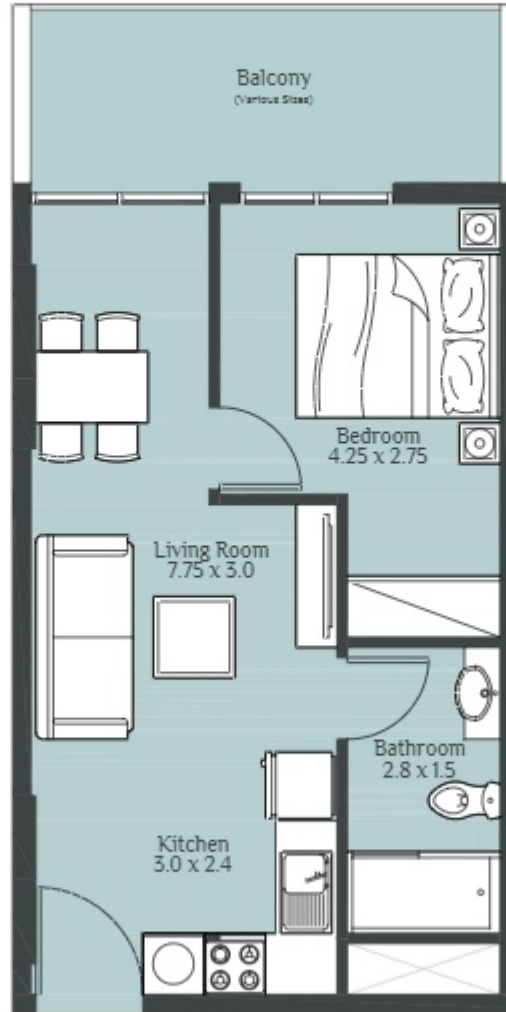
JUNIOR 1 BEDROOM TYPE - A



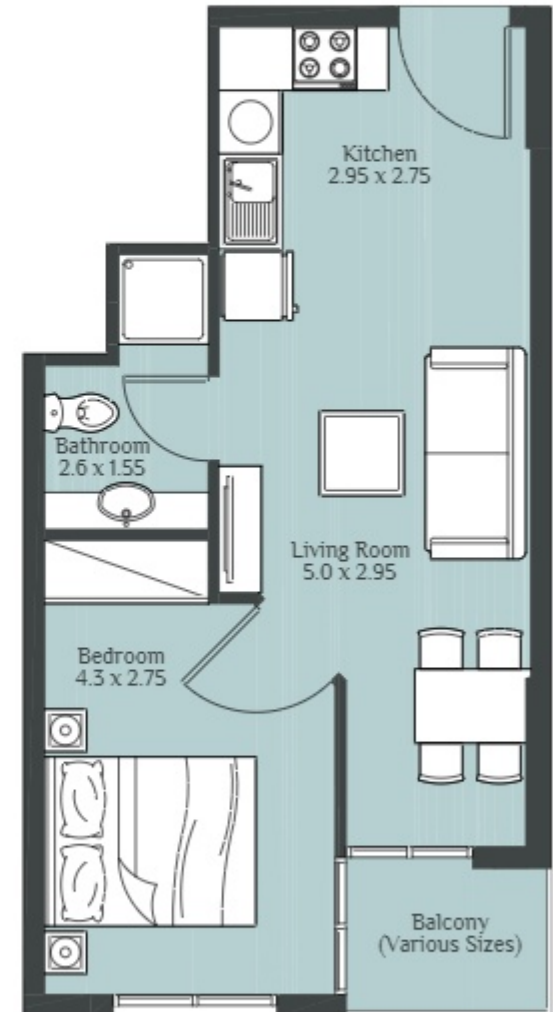
JUNIOR 1 BEDROOM TYPE - B



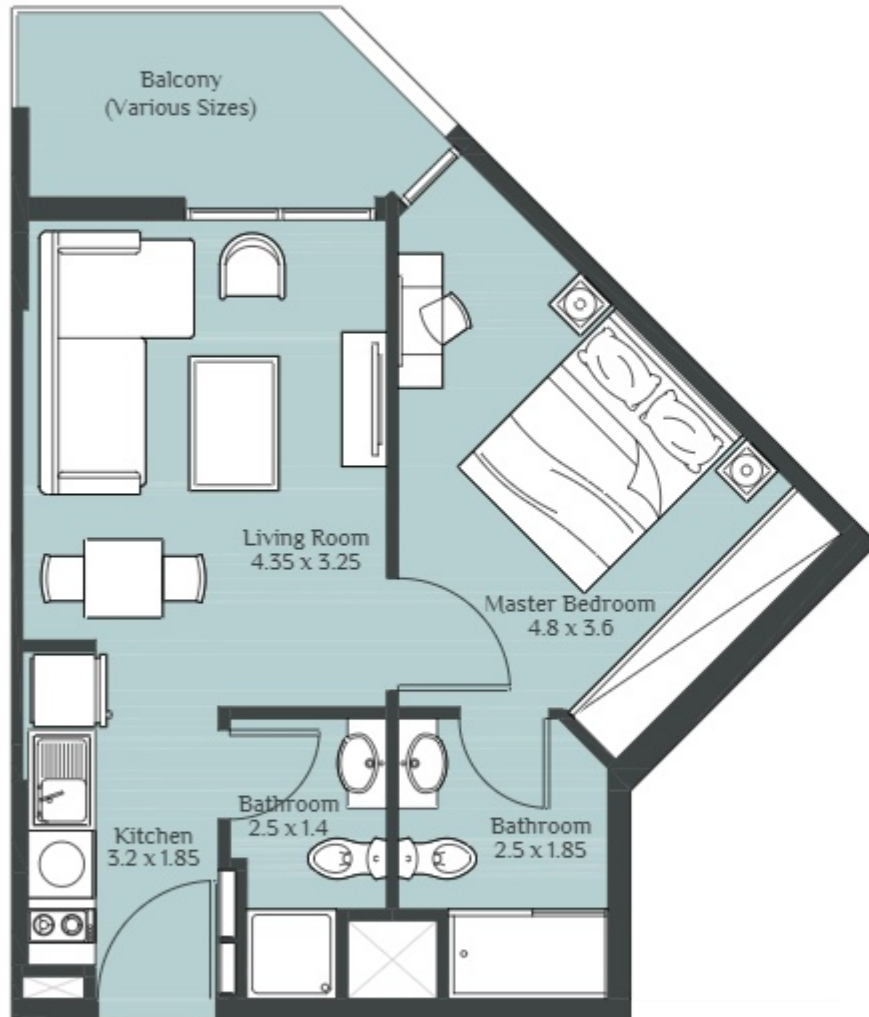
JUNIOR 1 BEDROOM TYPE - C



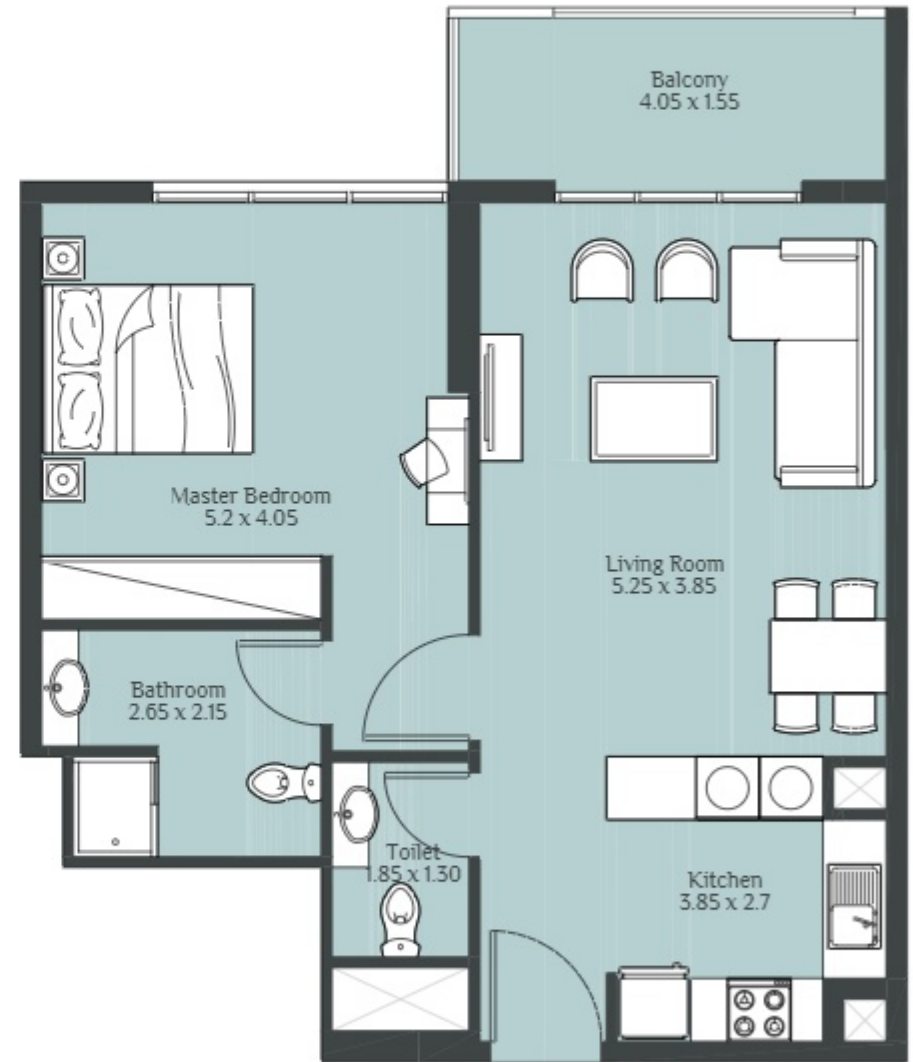
JUNIOR 1 BEDROOM TYPE - D



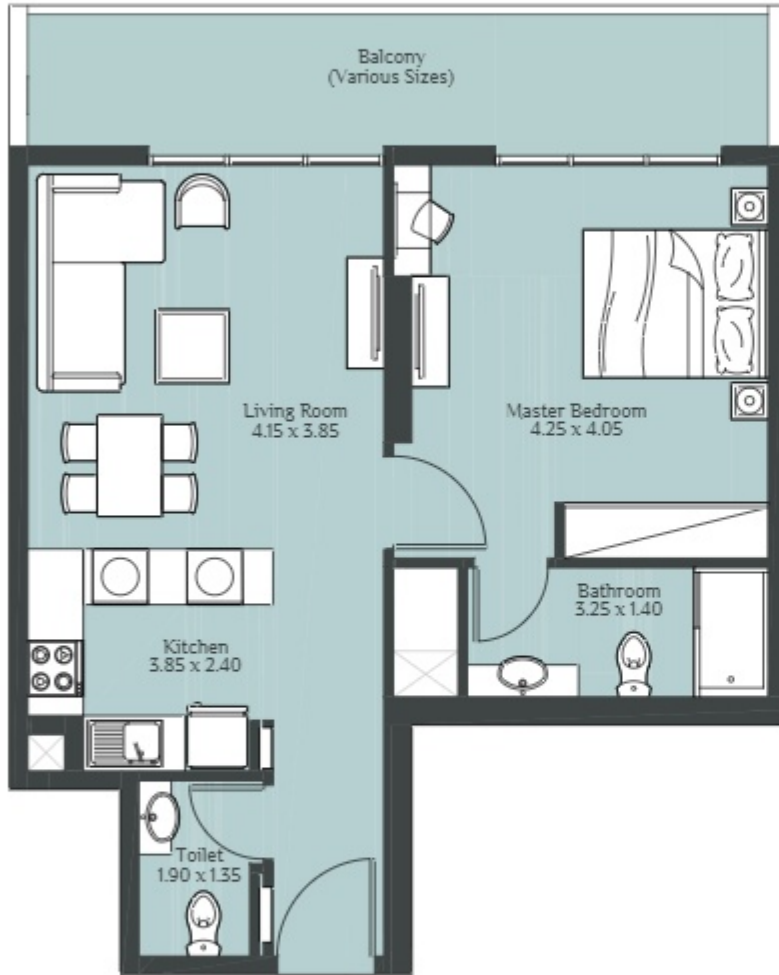
1 BEDROOM TYPE - A



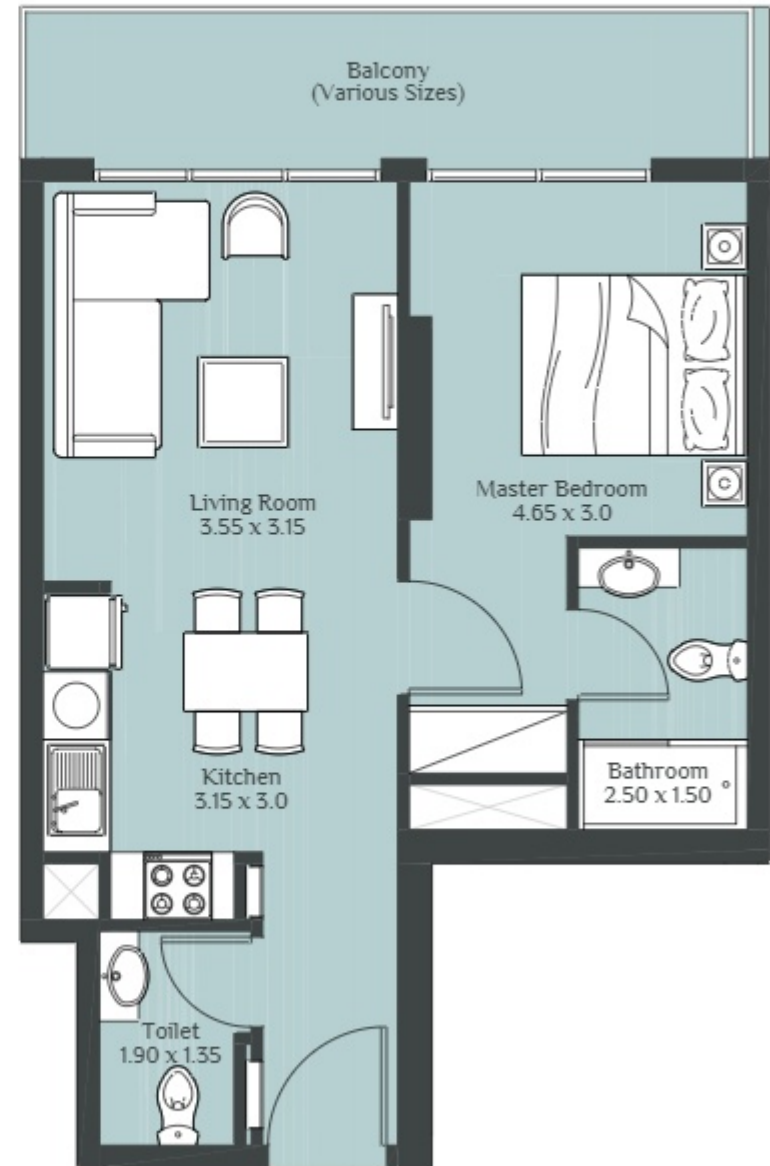
1 BEDROOM TYPE - B



1 BEDROOM TYPE - C

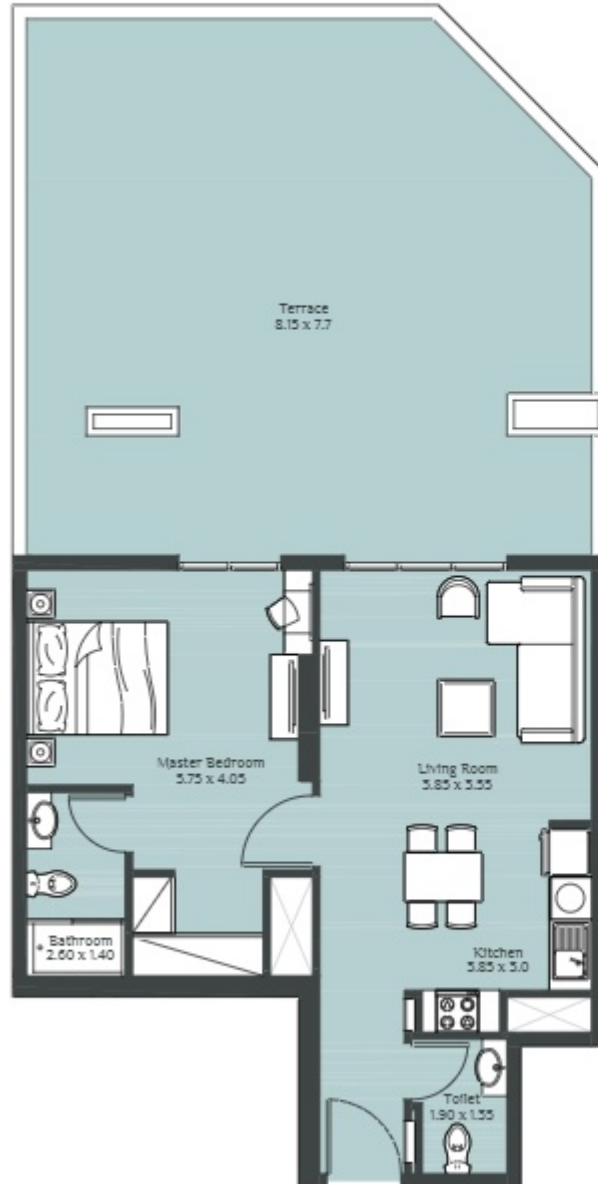


1 BEDROOM TYPE - D

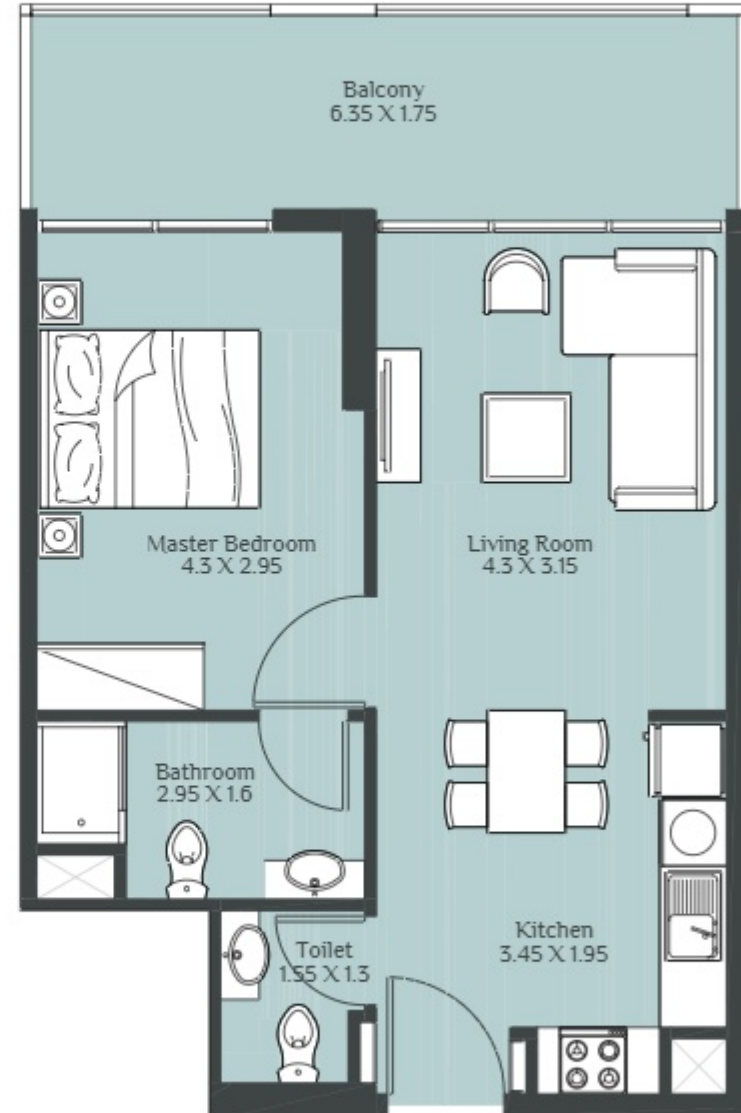




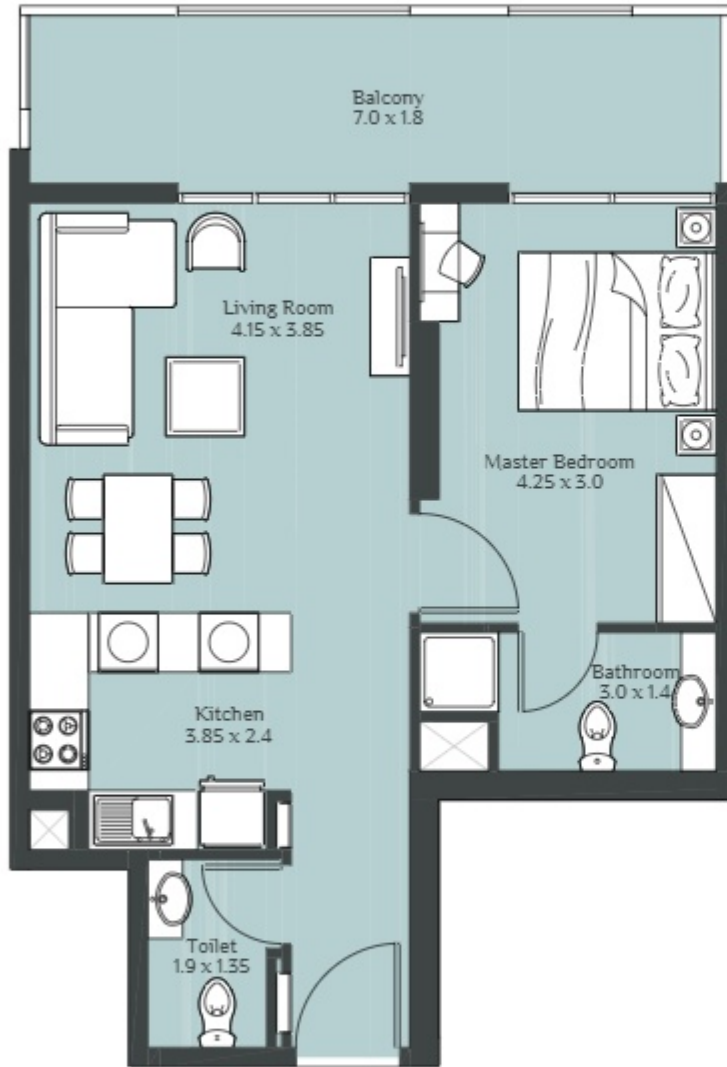
1 BEDROOM TYPE - E



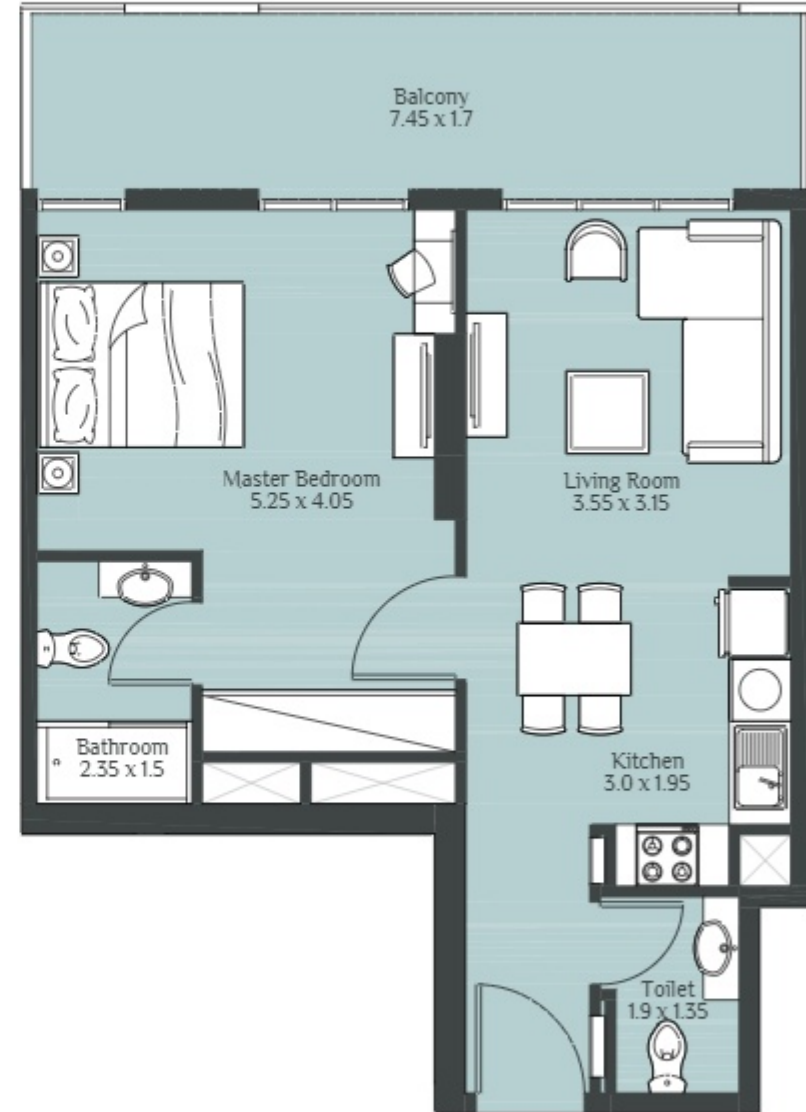
1 BEDROOM TYPE - F



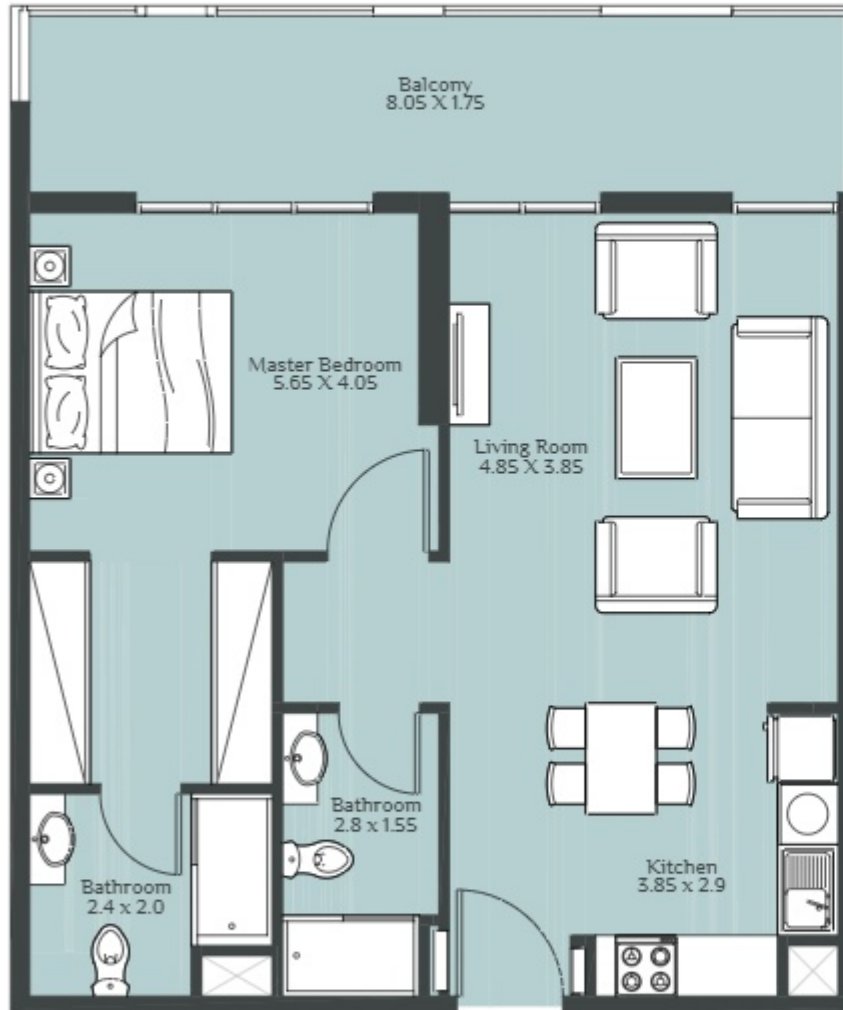
1 BEDROOM TYPE - G



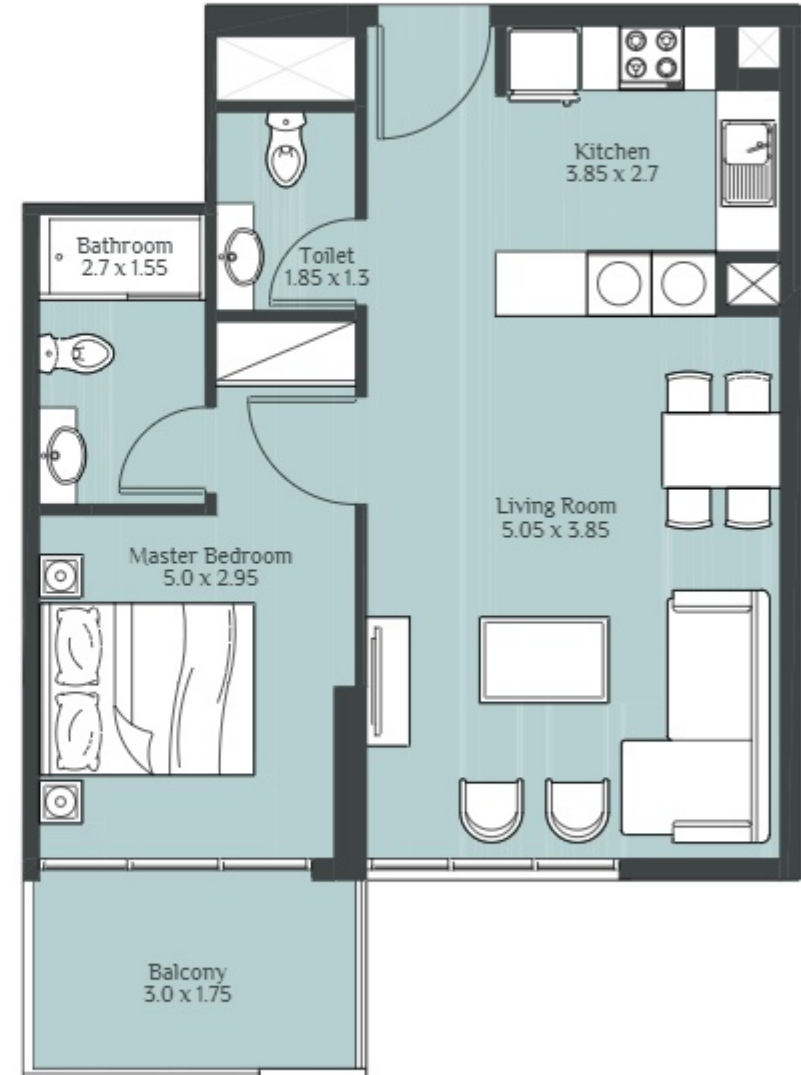
1 BEDROOM TYPE - H



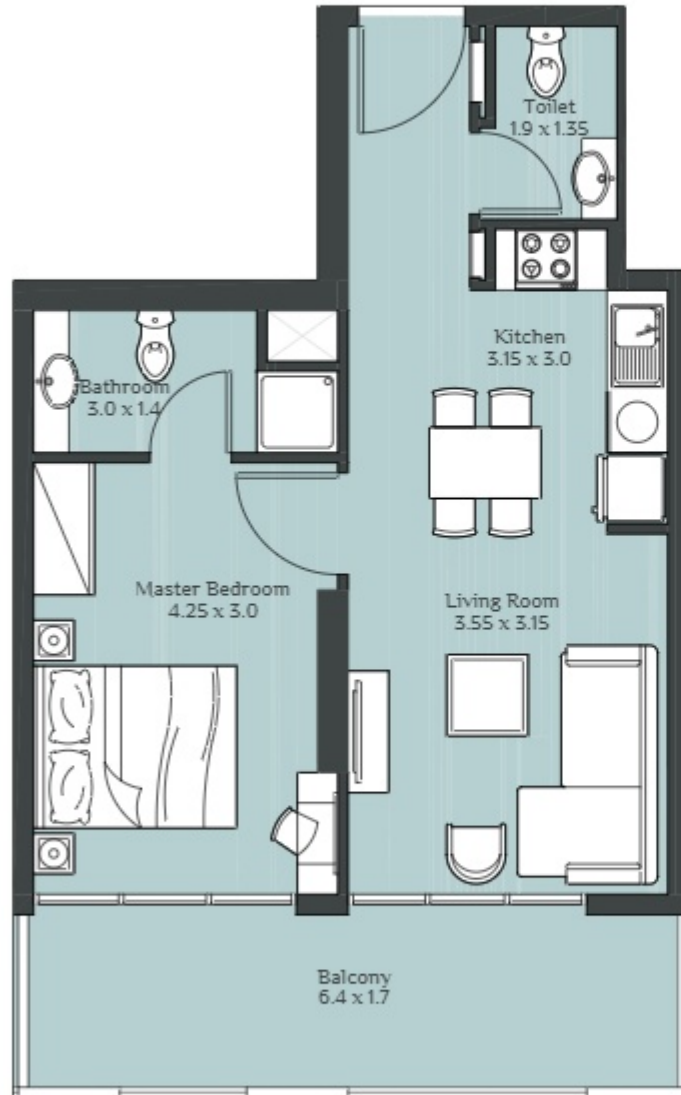
1 BEDROOM TYPE - J



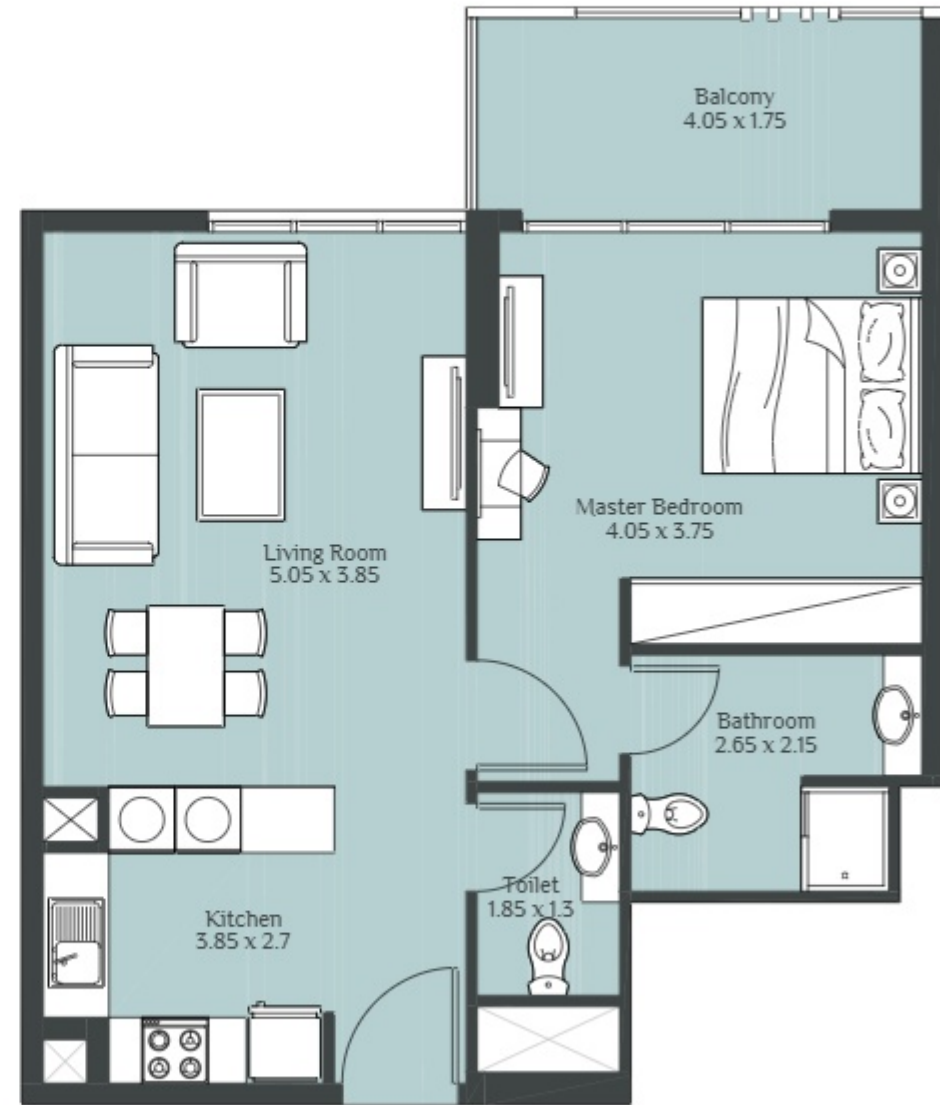
1 BEDROOM TYPE - K



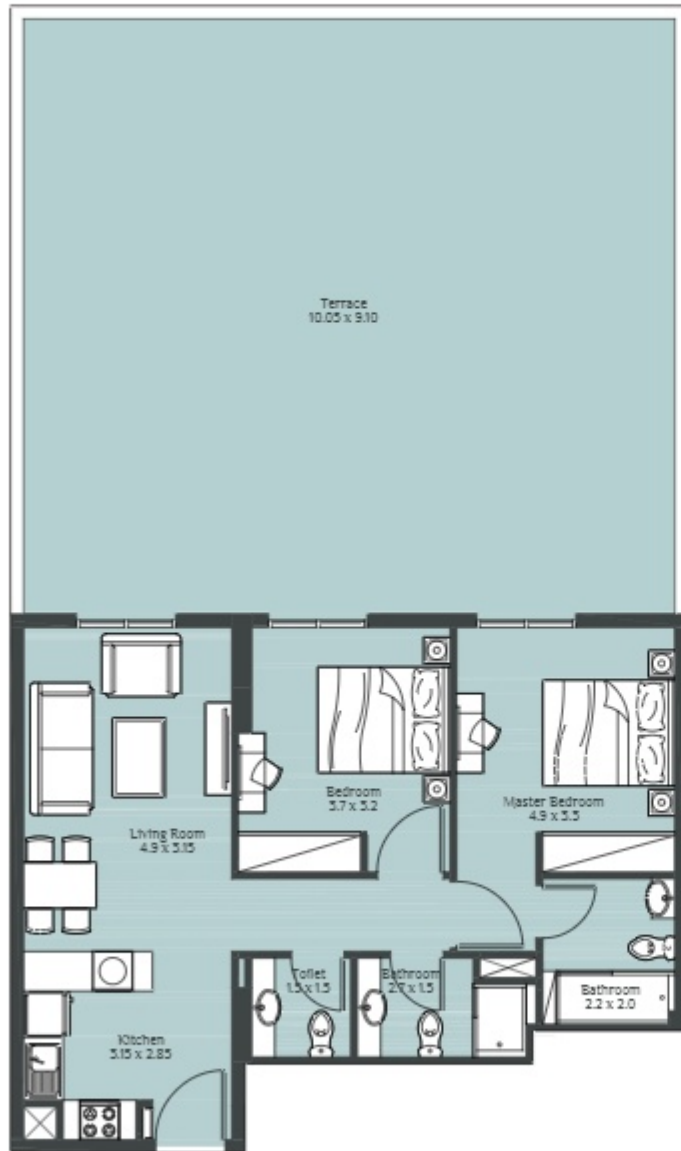
1 BEDROOM TYPE - M



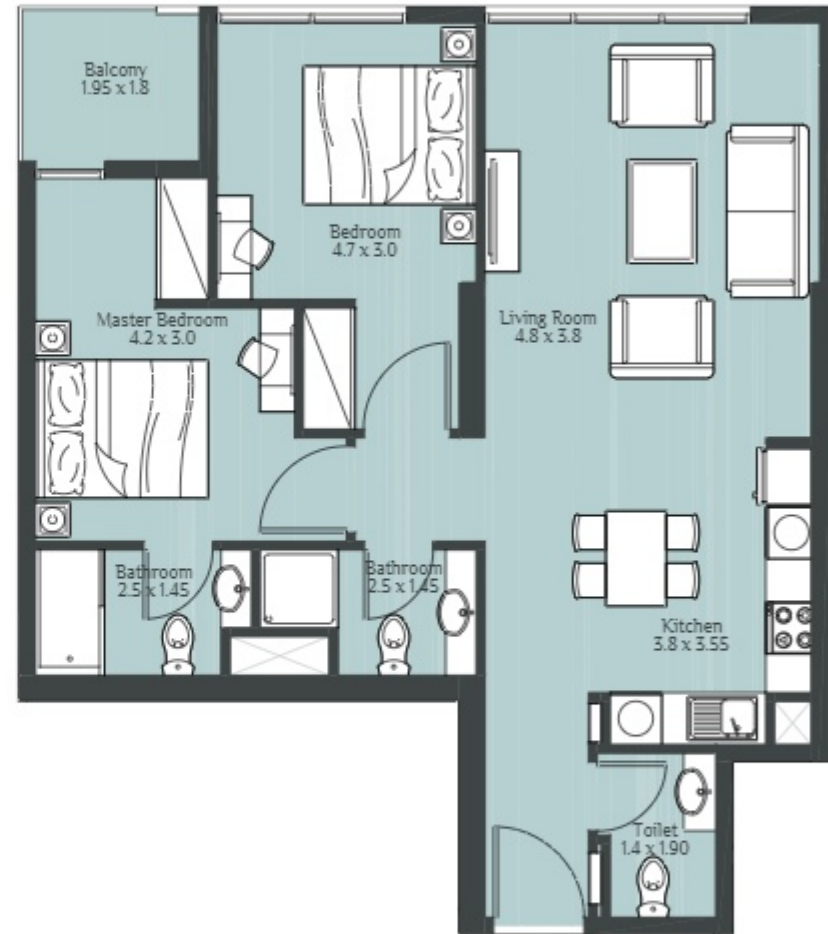
1 BEDROOM TYPE - N



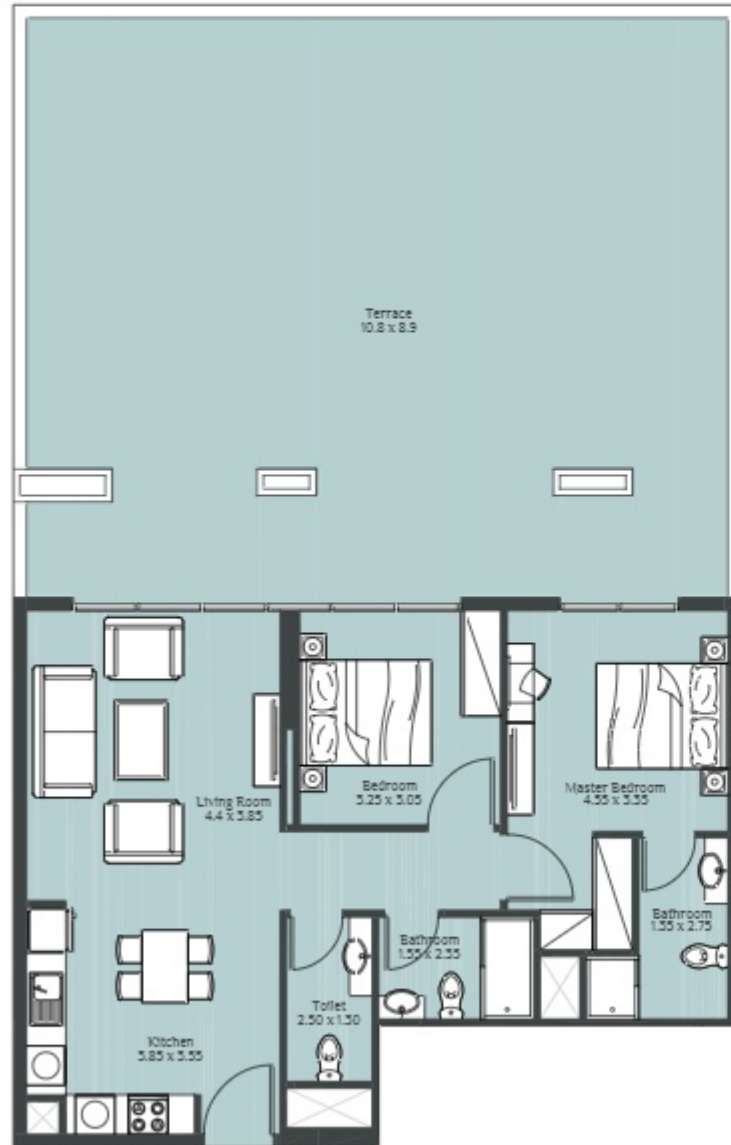
2 BEDROOM TYPE - A



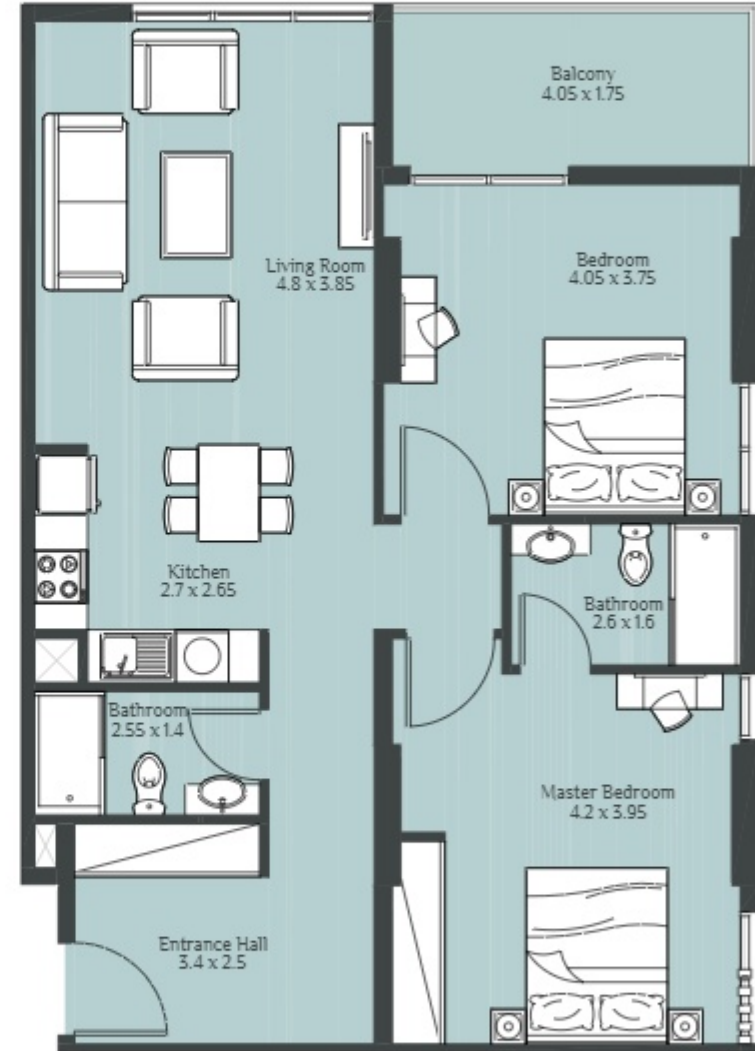
2 BEDROOM TYPE - B



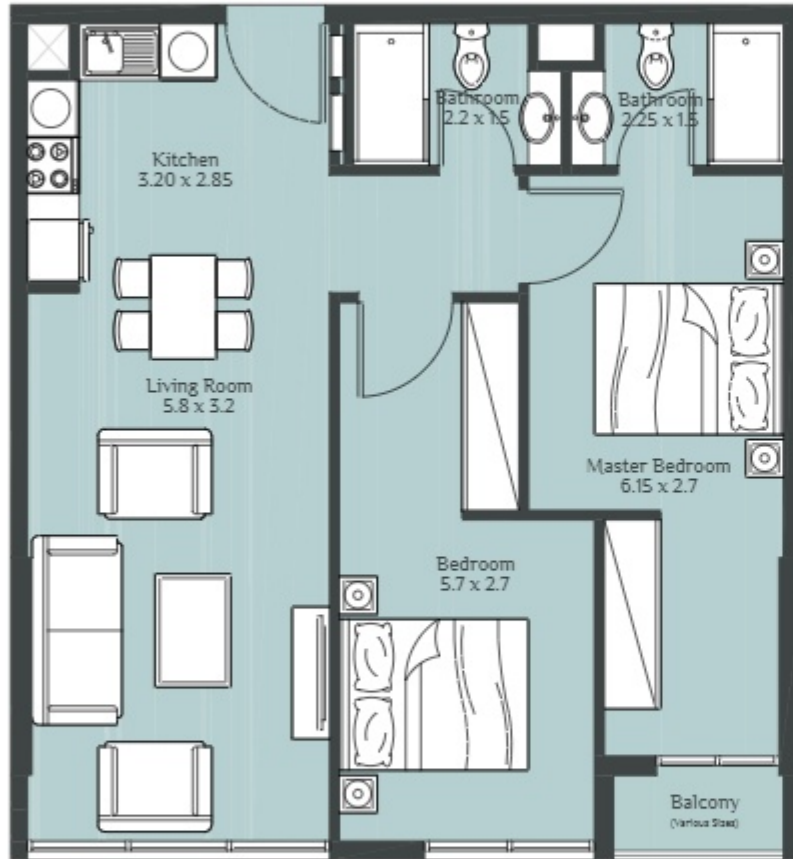
2 BEDROOM TYPE - C



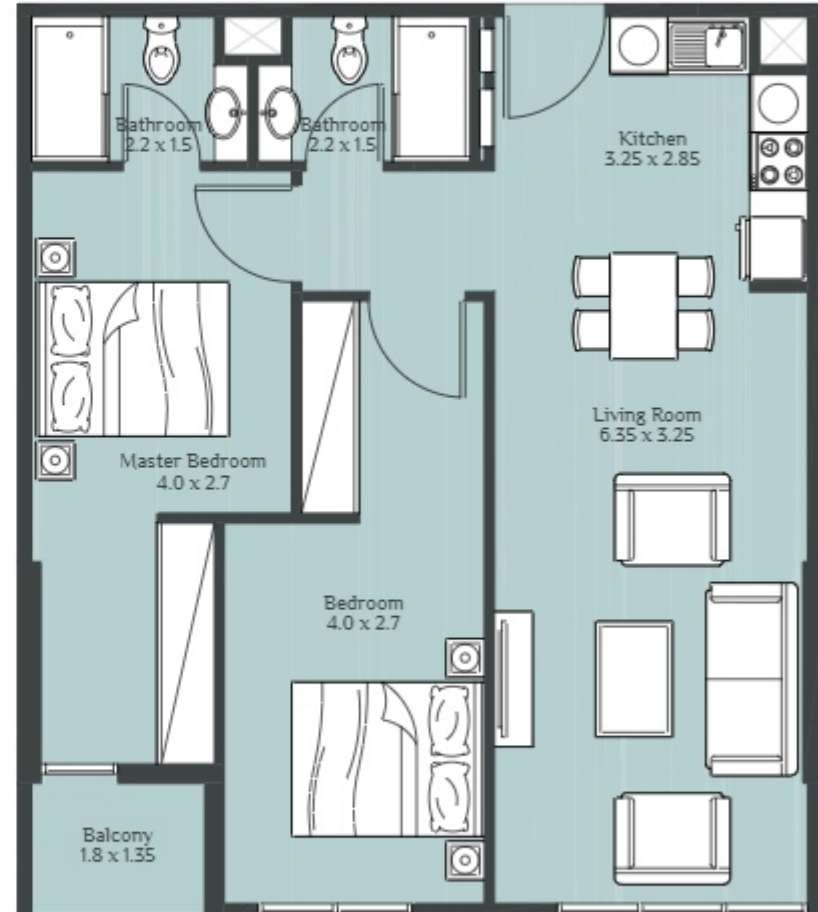
2 BEDROOM TYPE - D



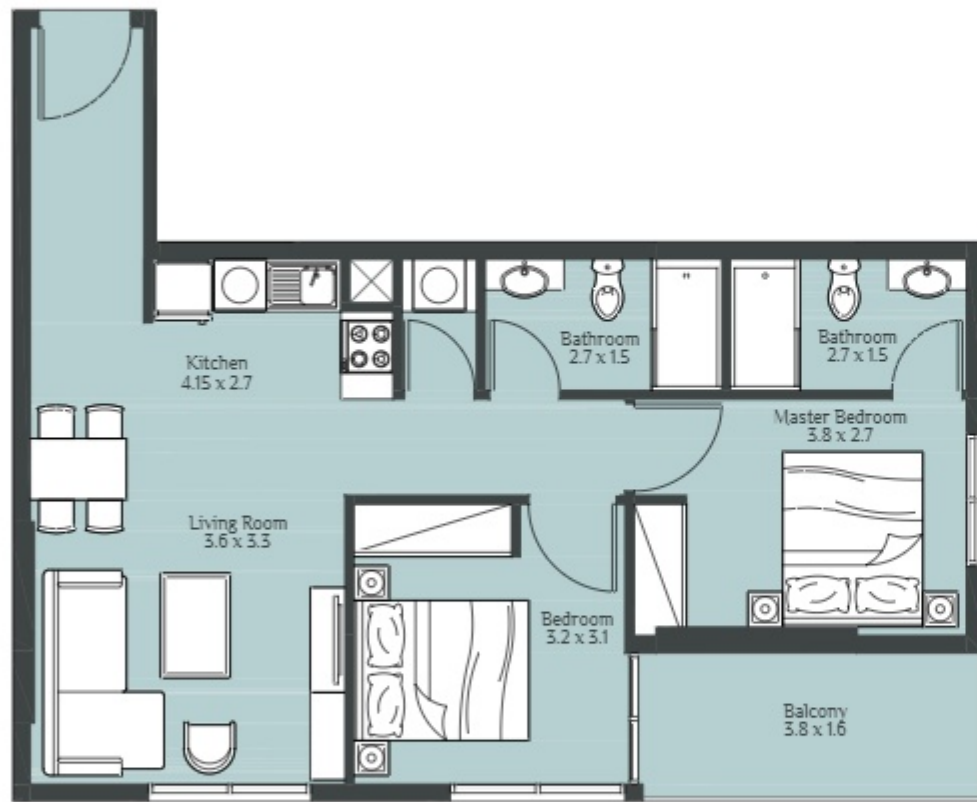
2 BEDROOM TYPE - E



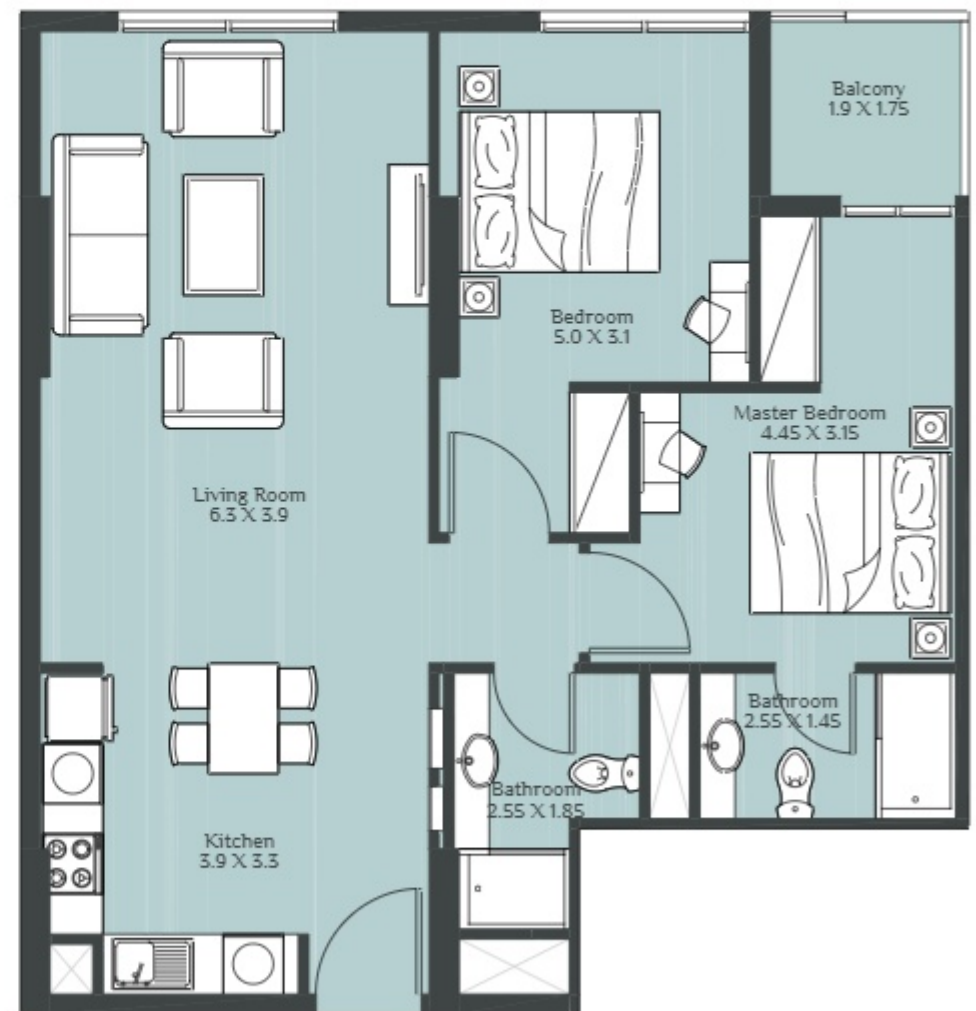
2 BEDROOM TYPE - F



2 BEDROOM TYPE - G

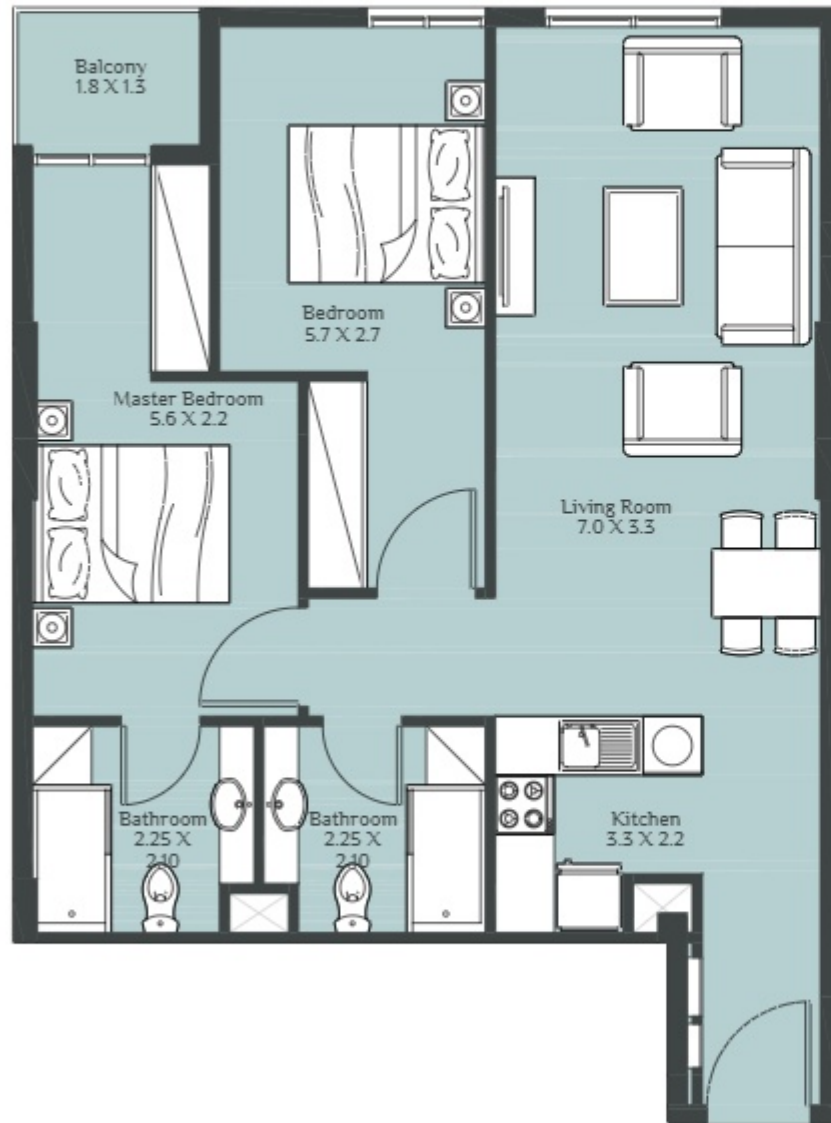


2 BEDROOM TYPE - H

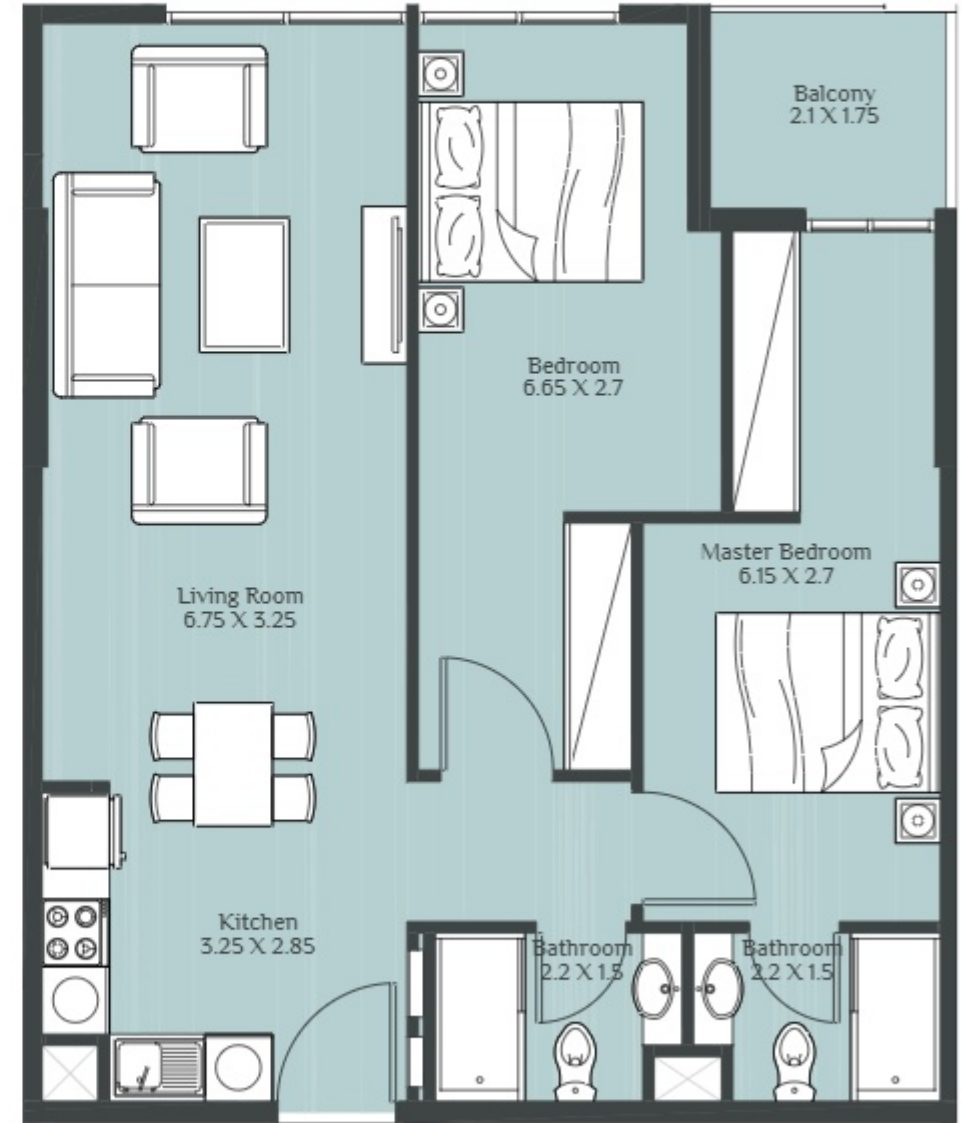




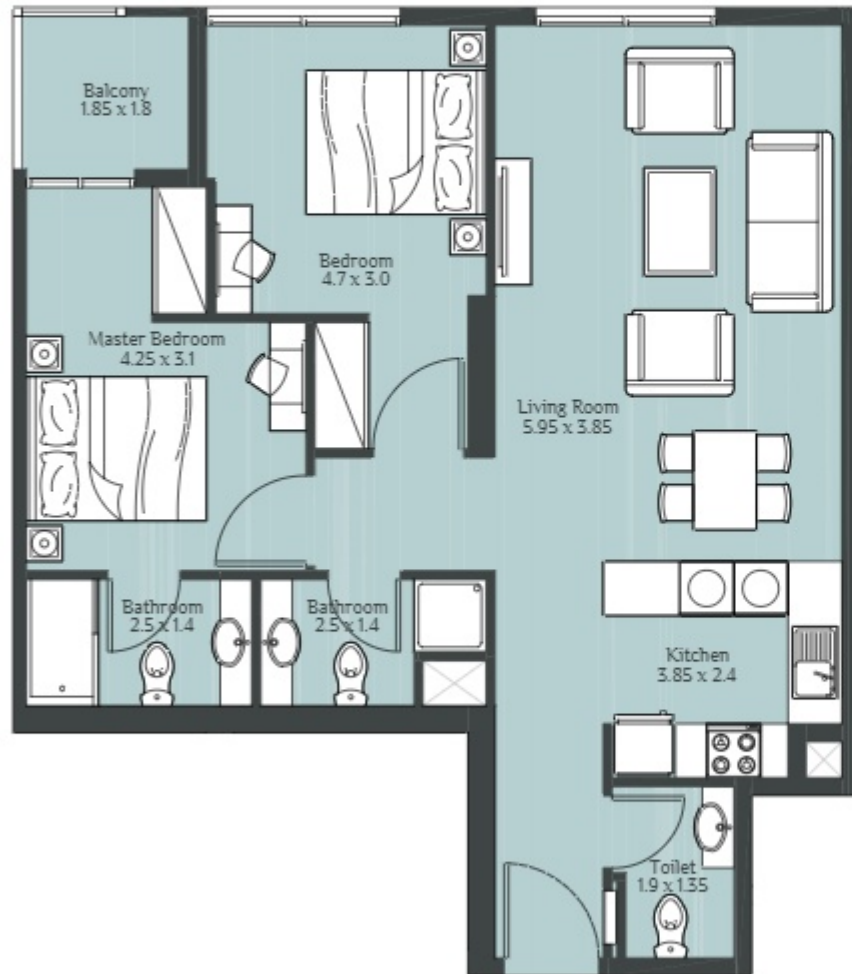
2 BEDROOM TYPE - K



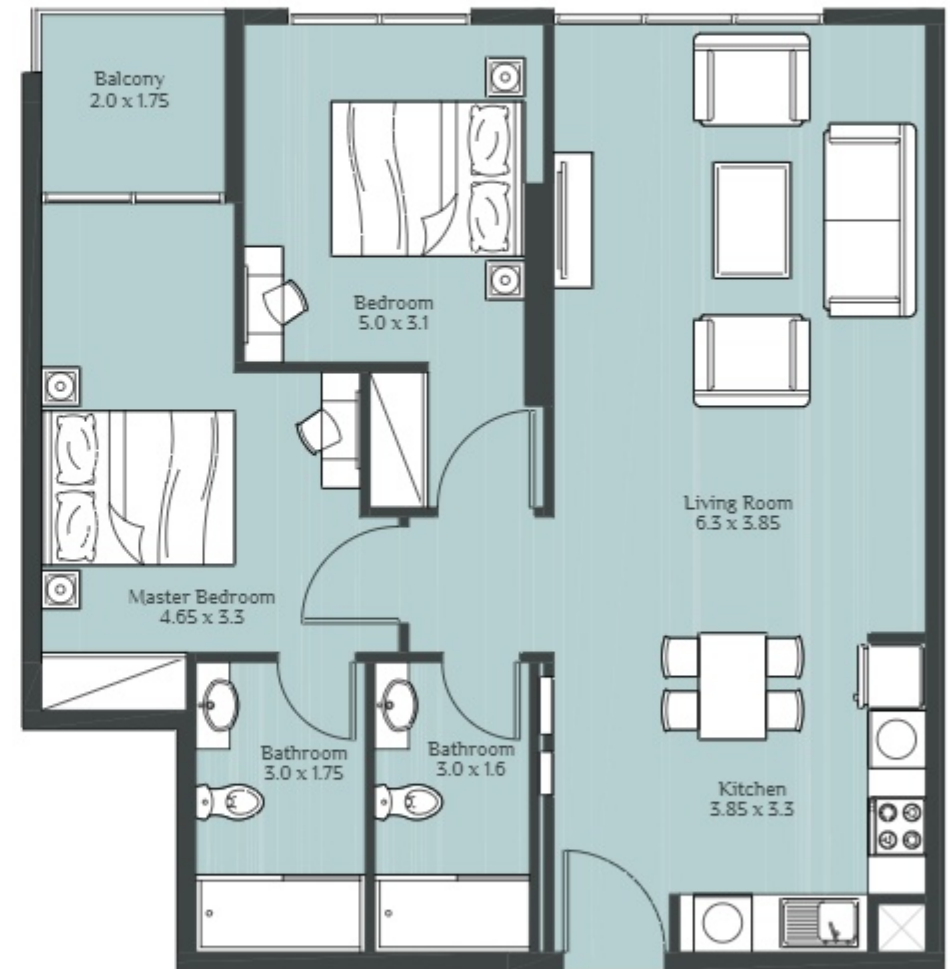
2 BEDROOM TYPE - L



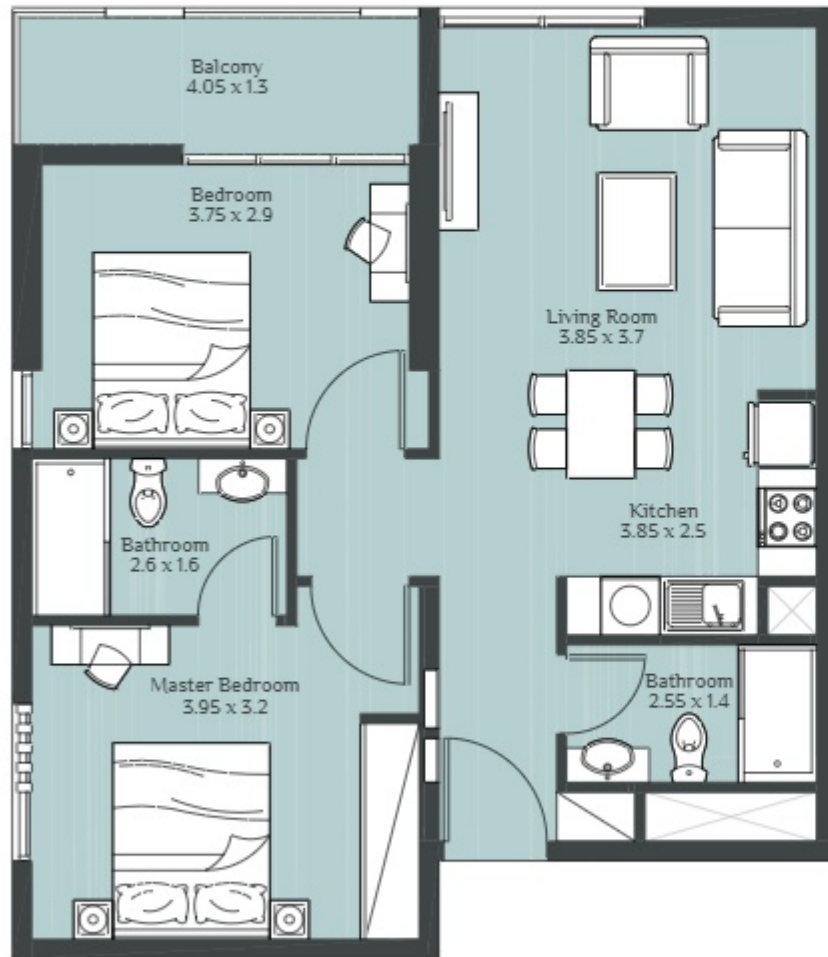
2 BEDROOM TYPE - M



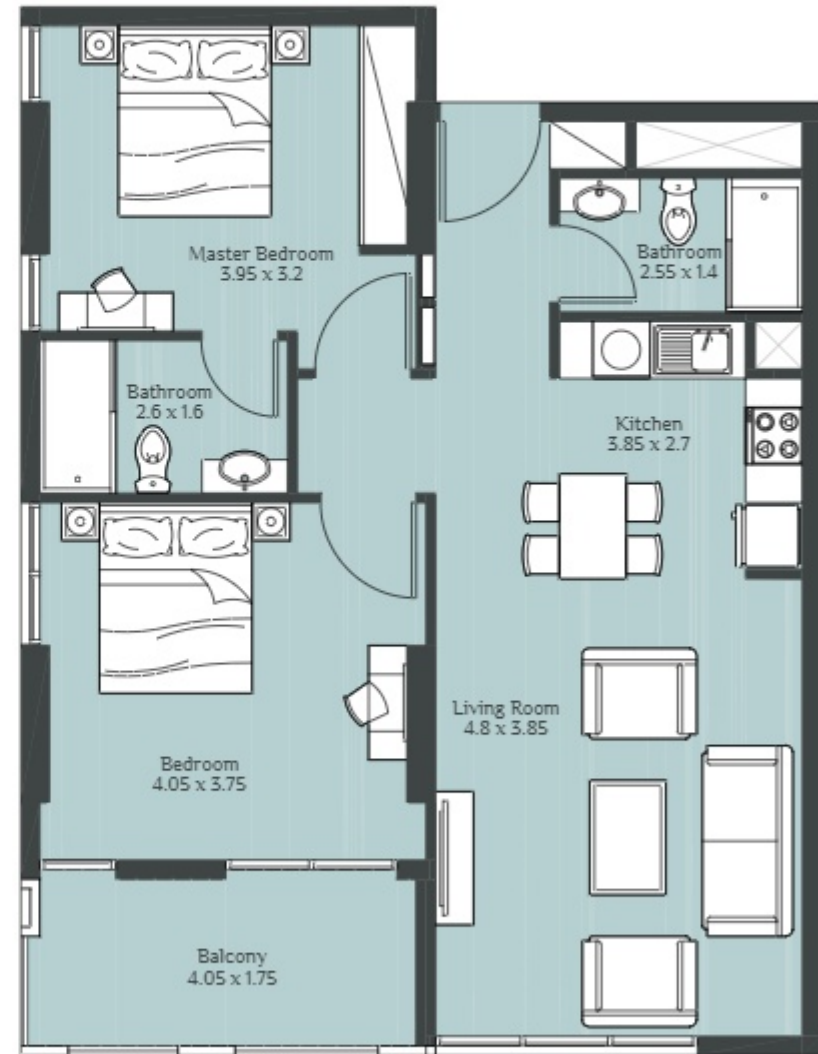
2 BEDROOM TYPE - N



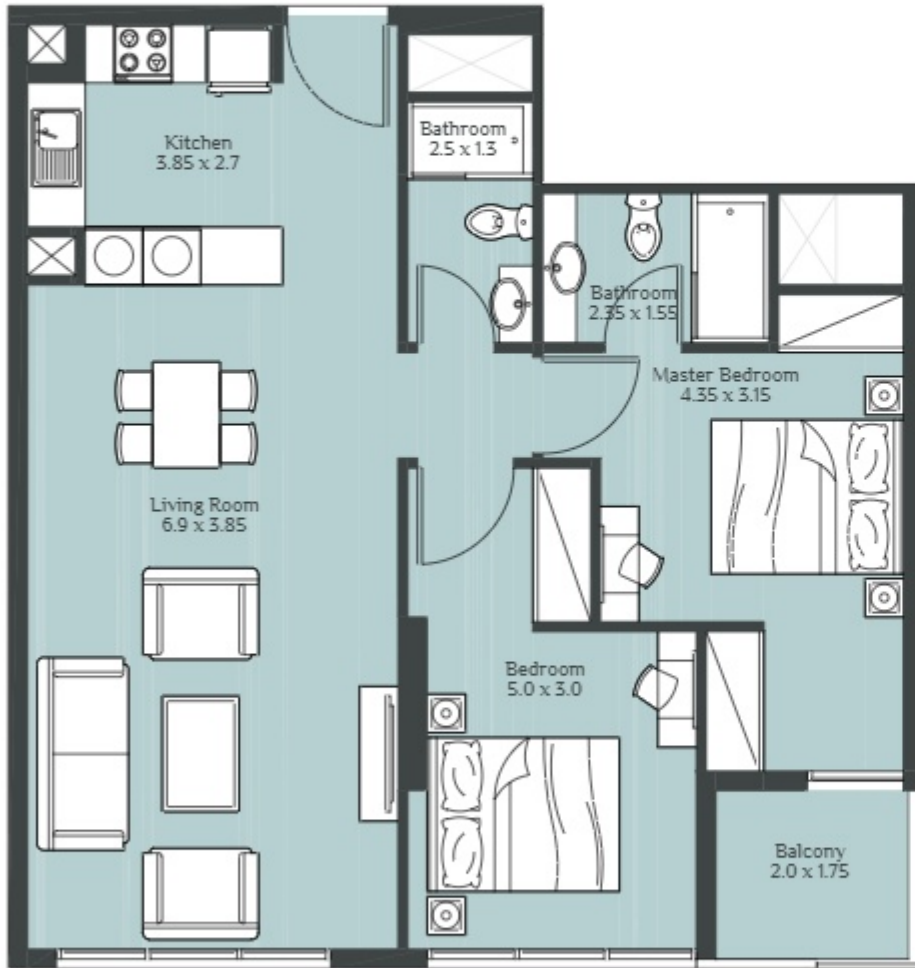
2 BEDROOM TYPE - O



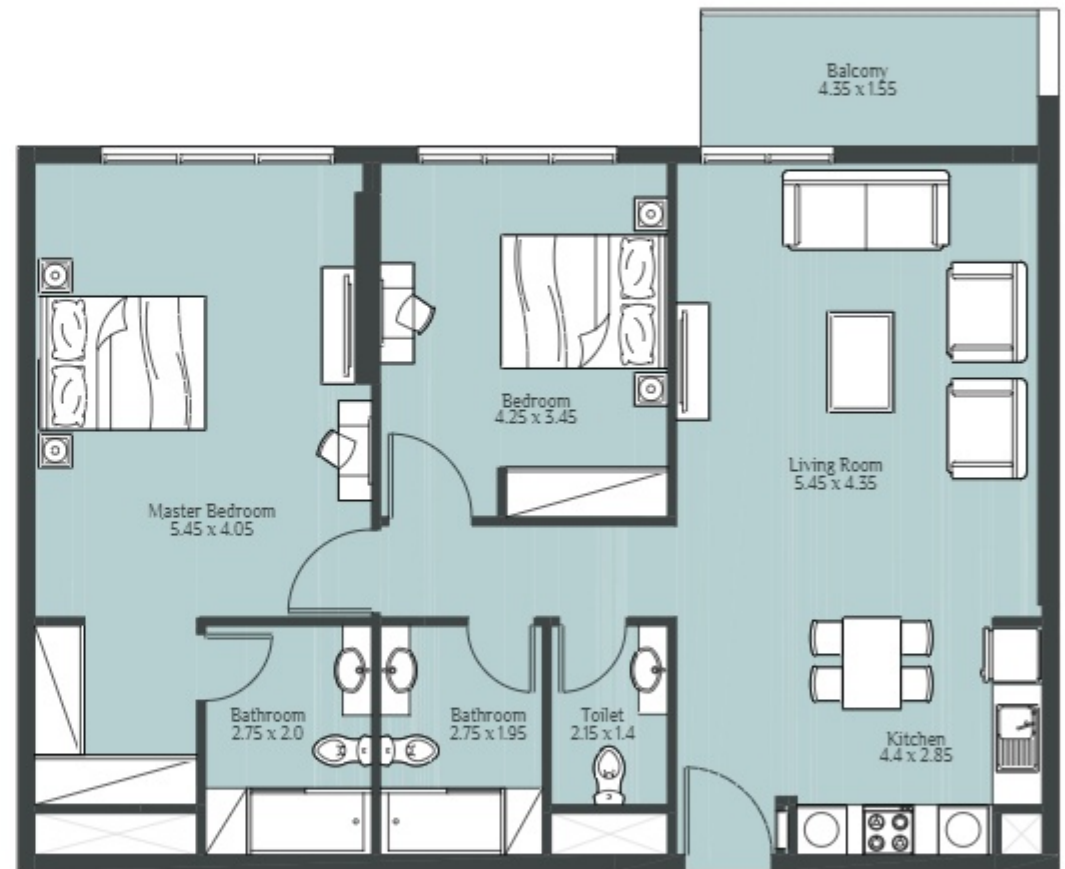
2 BEDROOM TYPE - P



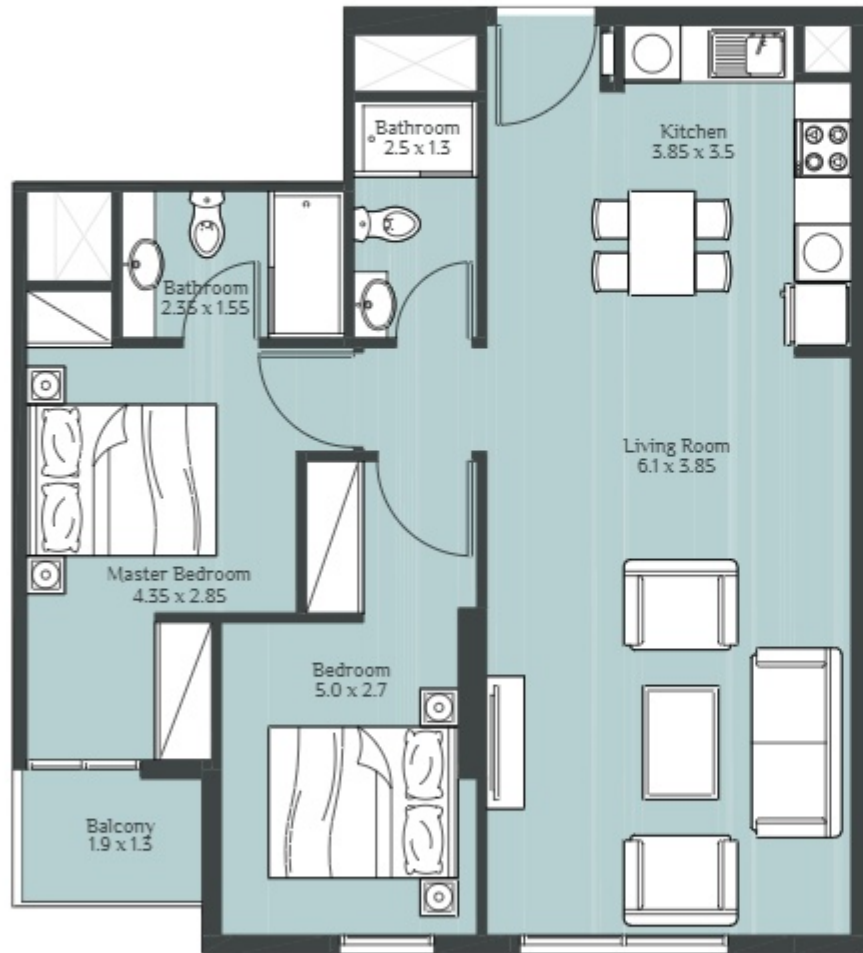
2 BEDROOM TYPE - Q



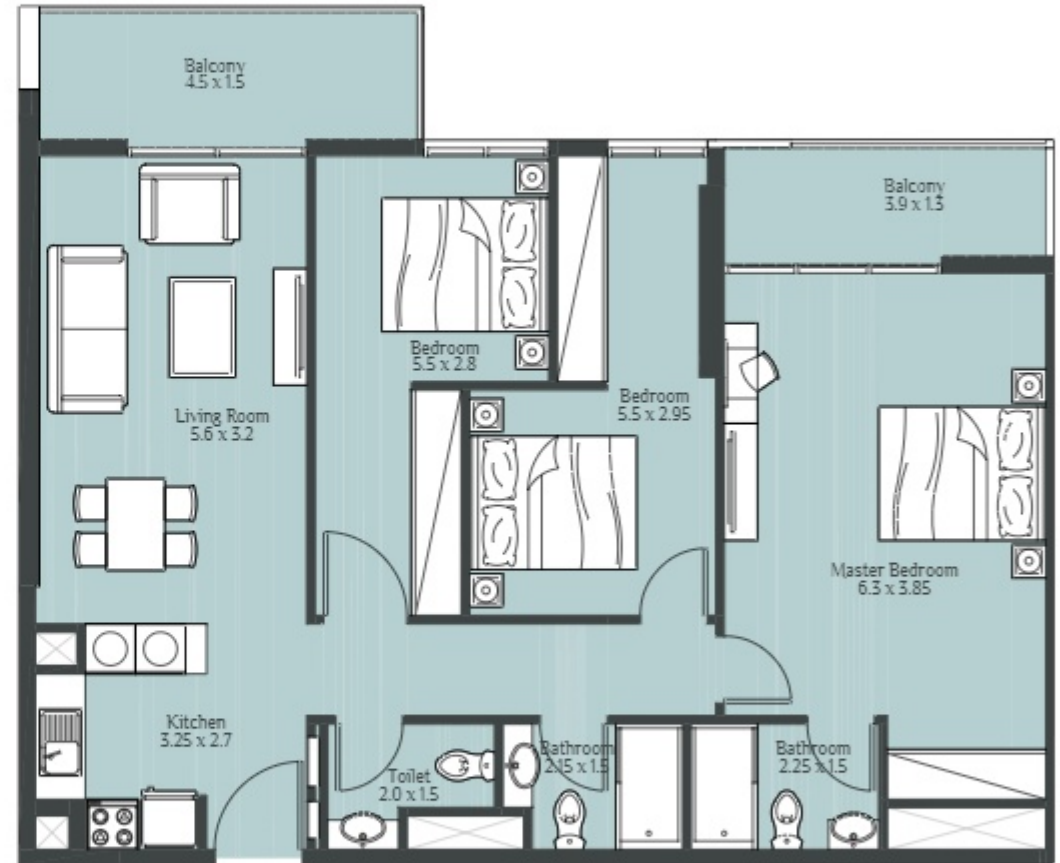
2 BEDROOM TYPE - R



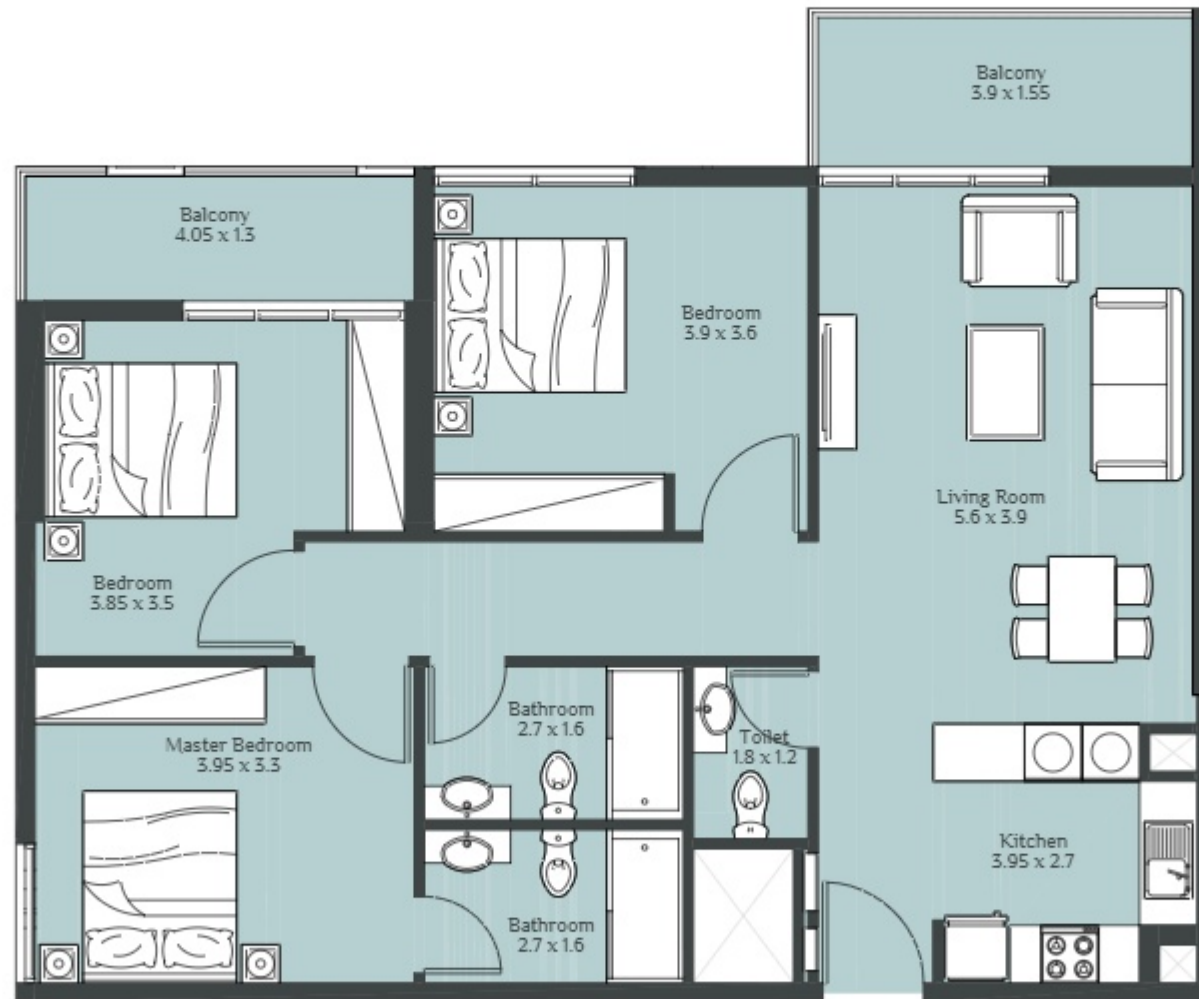
2 BEDROOM TYPE - S



3 BEDROOM TYPE - A



## 3 BEDROOM TYPE - B



ريپورتاج العقارية  
**Reportage.**  
Properties

---

Abu Dhabi | Head Office  
Tamouh Tower  
27<sup>th</sup> Floor, Al Reem Island  
P.O. Box: 111949  
United Arab Emirates  
Phone: +971 2 204 3300  
info@reportageuae.com

Dubai Office  
Oberoi Centre  
3<sup>rd</sup> Floor, Business Bay  
P.O. Box: 27446  
United Arab Emirates  
Phone: +971 4 240 5556  
info@reportageuae.com

Escrow Account Details  
Account Name: Rukan Escrow  
Account No.: 002393135911  
IBAN No.: AE550070035911393101002  
Currency: AED  
Swift Code: ARAIAEAD

---

For more information, visit [reportageuae.com](http://reportageuae.com)  
or call 800 7755 2 | +971 50 244 1078



برج - رُكان  
RUKAN - TOWER

**R.**