



# SLS

RESIDENCES  
THE PALM DUBAI

**ROYA**  
LIFESTYLE DEVELOPMENTS

*\*Disclaimer: This proprietary presentation contains privileged and confidential information. You are hereby notified that you should not physically, digitally, or verbally share, distribute, copy, or forward the contents of this presentation.*

## Located on the Western Crescent of the Palm





## SLS Residences Palm

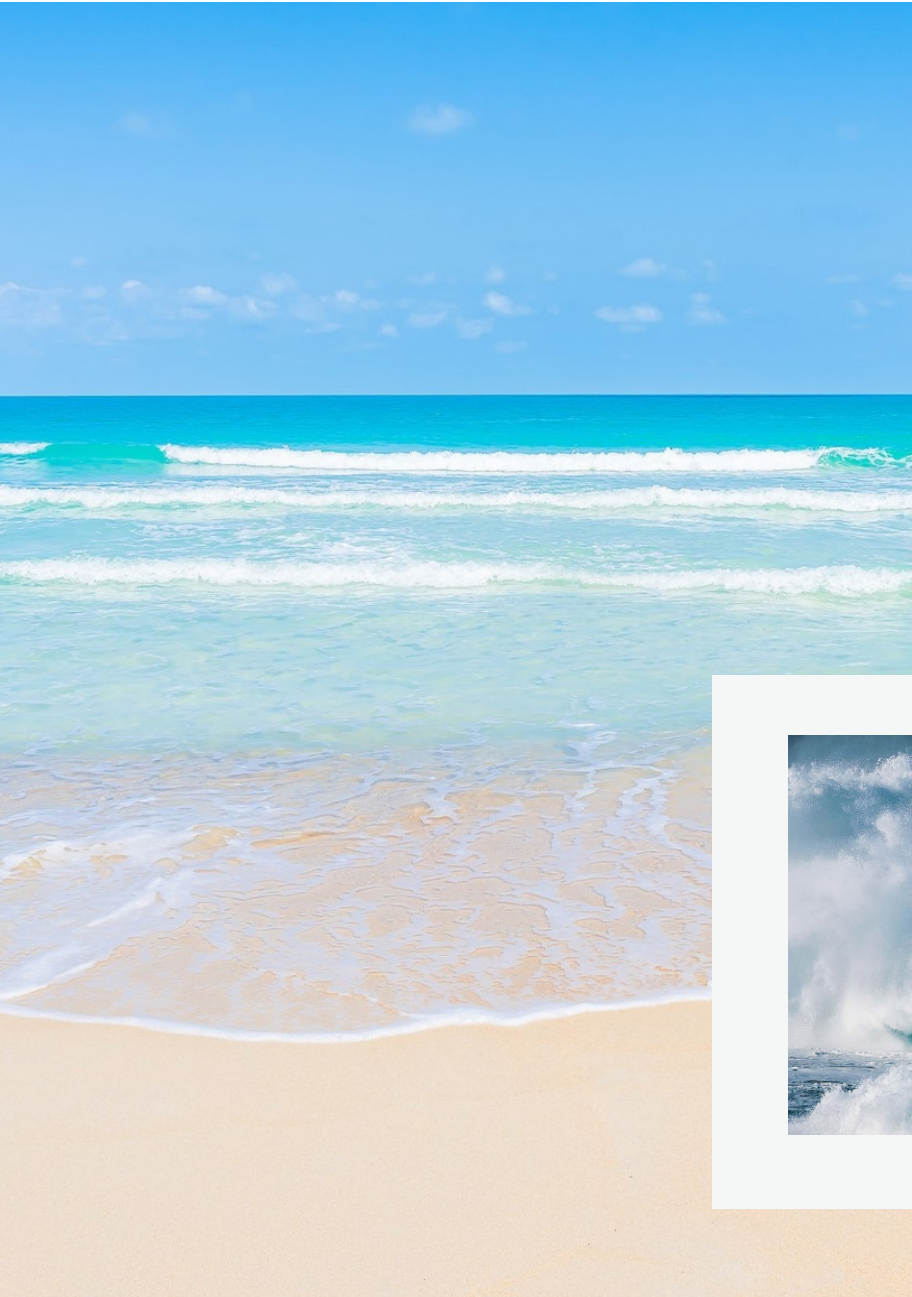
A unique collection of ultra luxury residences by SLS.

With hues of turquoise washing in from the Arabian Sea and soft golden touches of sand dunes all around, SLS Residences The Palm is a perfect mosaic of the Palm Jumeirah.

Elements of air, light, water and shadows are cohesively blended throughout the building, allowing it to transcend to life.

The residence is designed to depict motion, through wave resembling abstract shapes on its exterior.

The use of high ceilings in all units and the implementation of sustainable material creates a soft and ethereal essence throughout SLS Residences Palm. Enjoy a tranquil and endless 360-degree views of the sea.









Live the ultimate luxury lifestyle in  
Dubai with a five star global brand









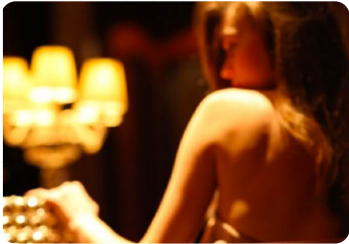








# World Class Amenities



Clubhouse - Residence Lounge



Private Dining - "Chef's Table"



Luxury Residence Pool



Music/Pod Cast Recording Studio



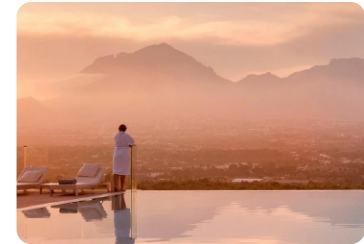
Fitness Center



High-end Games Room



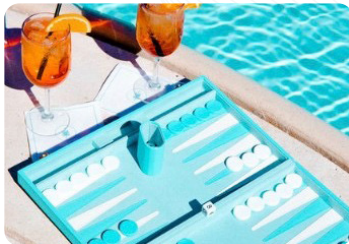
Private Screening Room



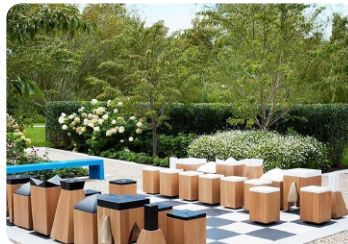
Health & Wellness Facility



Guesthouse/Suite



Pool-side & Beach Games



Outdoor Activities



Kids Club

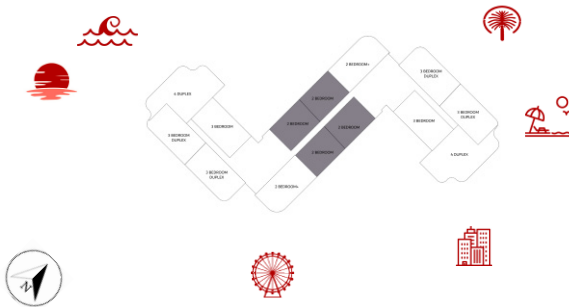
# SLS

RESIDENCES  
THE PALM DUBAI

## 2 BEDROOM TYPE 1

SUITE AREA	131.77 M <sup>2</sup>	1,418.00 SQFT
BALCONY AREA	23.78 M <sup>2</sup>	256.00 SQFT
<b>TOTAL SELLABLE AREA</b>	<b>155.55 M<sup>2</sup></b>	<b>1,674.00 SQFT</b>

**KEYPLAN**  
( GROUND FLOOR - 1ST - 2ND -  
3RD - 4TH -5TH - 6TH - 7TH - 8TH)



FLOOR PLAN 1. All dimensions are in imperial and metric, and measured from finish to finish excluding construction tolerances. 2. All materials, dimensions, and drawings are approximate only. 3. Information is subject to change without notice, at developer's absolute discretion. 4. Actual area may vary from the stated area. 5. Drawings not to scale. 6. All images used are for illustrative purposes only and do not represent the actual size, features, specifications, fittings, and furnishings. 7. The developer reserves the right to make revisions / alterations, at it's absolute discretion, without any liability whatsoever.



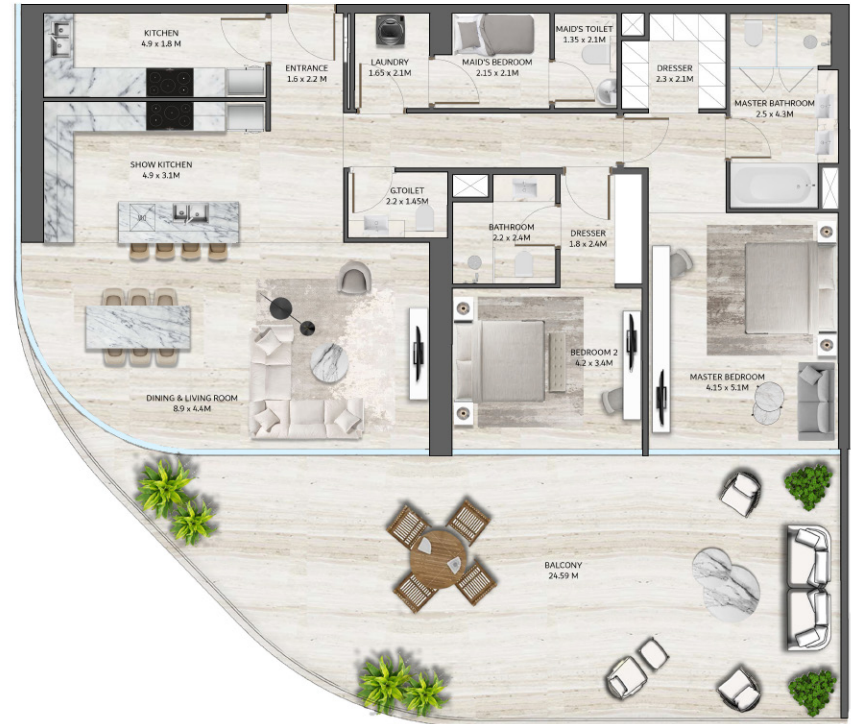
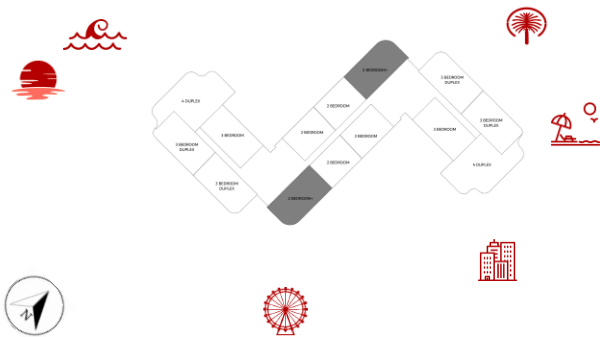
# SLS

RESIDENCES  
THE PALM DUBAI

## 2 BEDROOM TYPE 2

SUITE AREA	163.75 M2	1,763.00 SQFT
BALCONY AREA	24.59 M2	265.00 SQFT
TOTAL SELLABLE AREA	188.34 M2	2,027.00 SQFT

**KEYPLAN**  
( GROUND FLOOR - 1ST - 2ND -  
3RD - 4TH -5TH - 6TH - 7TH - 8TH)



FLOOR PLAN 1. All dimensions are in imperial and metric, and measured from finish to finish excluding construction tolerances. 2. All materials, dimensions, and drawings are approximate only. 3. Information is subject to change without notice, at developer's absolute discretion. 4. Actual area may vary from the stated area. 5. Drawings not to scale. 6. All images used are for illustrative purposes only and do not represent the actual size, features, specifications, fittings, and furnishings. 7. The developer reserves the right to make revisions / alterations, at it's absolute discretion, without any liability whatsoever.

# SLS

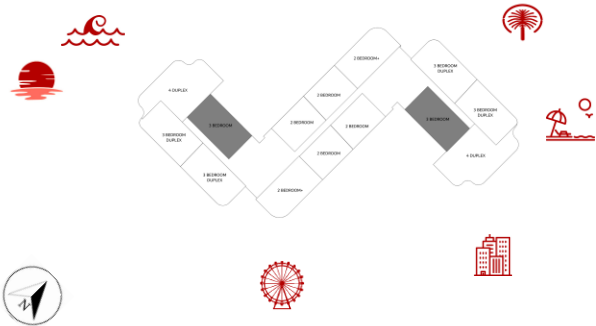
RESIDENCES  
THE PALM DUBAI

## 3 BEDROOM TYPE 1

SUITE AREA	174.53 M2	1,879.00 SQFT
BALCONY AREA	54.17 M2	583.08 SQFT
TOTAL SELLABLE AREA	228.7 M2	2,462.00 SQFT

### KEYPLAN

( GROUND FLOOR - 1ST - 2ND -  
3RD - 4TH -5TH - 6TH - 7TH - 8TH)



FLOOR PLAN 1. All dimensions are in imperial and metric, and measured from finish to finish excluding construction tolerances. 2. All materials, dimensions, and drawings are approximate only. 3. Information is subject to change without notice, at developer's absolute discretion. 4. Actual area may vary from the stated area. 5. Drawings not to scale. 6. All images used are for illustrative purposes only and do not represent the actual size, features, specifications, fittings, and furnishings. 7. The developer reserves the right to make revisions / alterations, at it's absolute discretion, without any liability whatsoever.



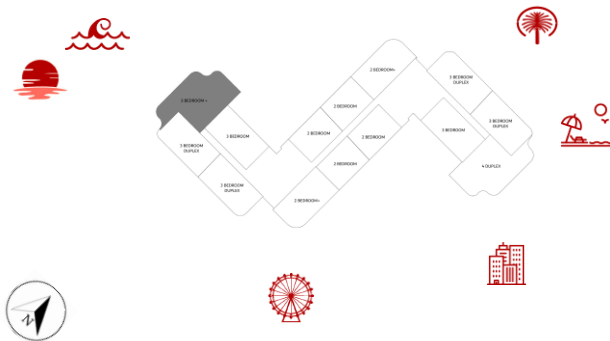
# SLS

RESIDENCES  
THE PALM DUBAI

## 3 BEDROOM TYPE 2

SUITE AREA	257.84 M2	2,775.00 SQFT
BALCONY AREA	72.55 M2	780.92 SQFT
TOTAL SELLABLE AREA	330.39 M2	3,555.92 SQFT

### KEYPLAN ( GROUND FLOOR - 1ST FLOOR )



FLOOR PLAN 1. All dimensions are in imperial and metric, and measured from finish to finish excluding construction tolerances. 2. All materials, dimensions, and drawings are approximate only. 3. Information is subject to change without notice, at developer's absolute discretion. 4. Actual area may vary from the stated area. 5. Drawings not to scale. 6. All images used are for illustrative purposes only and do not represent the actual size, features, specifications, fittings, and furnishings. 7. The developer reserves the right to make revisions / alterations, at it's absolute discretion, without any liability whatsoever.

# SLS

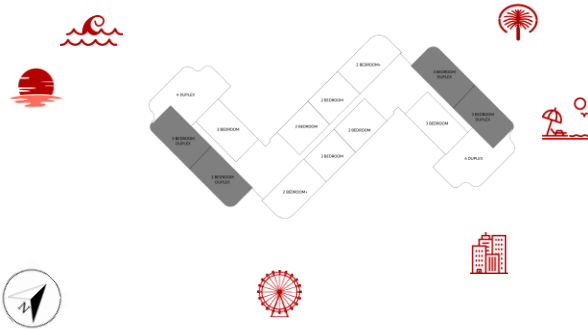
RESIDENCES  
THE PALM DUBAI

## 3 BEDROOM DUPLEX

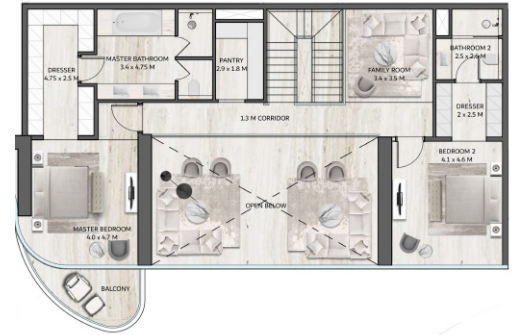
SUITE AREA	303.72 M2	3,269.00 SQFT
BALCONY AREA	86.8 M2	934.00 SQFT
TOTAL SELLABLE AREA	390.52 M2	4,204.00 SQFT

### KEYPLAN

( 2ND - 4TH - 6TH - 8TH )



LOWER LEVEL



UPPER LEVEL

FLOOR PLAN 1. All dimensions are in imperial and metric, and measured from finish to finish excluding construction tolerances. 2. All materials, dimensions, and drawings are approximate only. 3. Information is subject to change without notice, at developer's absolute discretion. 4. Actual area may vary from the stated area. 5. Drawings not to scale. 6. All images used are for illustrative purposes only and do not represent the actual size, features, specifications, fittings, and furnishings. 7. The developer reserves the right to make revisions / alterations, at its absolute discretion, without any liability whatsoever.





# SLS Residences Palm

## Unit mix

<b>Apartment Type</b>	<b>85 Simplex   25 Duplex   3 Penthouses</b>	
2 Bedroom	Simplex	60 Units
3 Bedroom	Simplex	25 Units
3 Bedroom	Duplex	16 Units
4 Bedroom	Duplex	9 Units
Penthouses	Duplex	3 Units
	<b>TOTAL</b>	<b>113 UNITS</b>





# SLS

RESIDENCES  
THE PALM DUBAI

**ROYA**  
LIFESTYLE DEVELOPMENTS

Welcome To the World of Luxury Living

Sheikh Zayed Road  
Phone: 800 ROYA  
Email: [info@roya.ae](mailto:info@roya.ae)