

# SAMANA CALIFORNIA 2

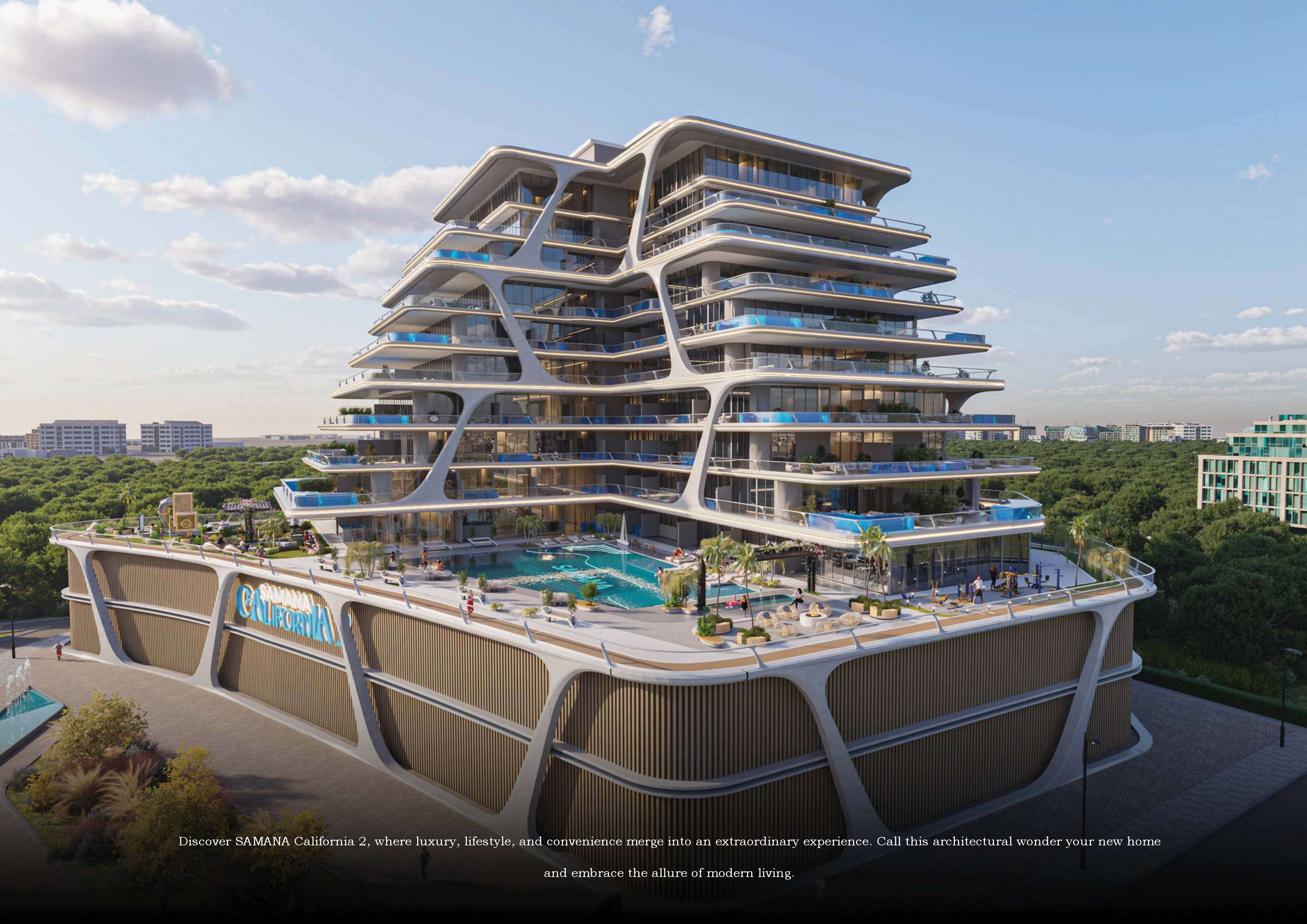
*The Rhythm of Life*

**SAMANA**  
DEVELOPERS



## *Elegance Meets Innovation*

Find your new home at SAMANA California 2, where luxury living meets modern convenience in the heart of the city. SAMANA California 2 offers you a unique blend of contemporary designs and serene surroundings. Every aspect of this residential property exudes elegance and comfort, promising an exceptional living experience.



Discover SAMANA California 2, where luxury, lifestyle, and convenience merge into an extraordinary experience. Call this architectural wonder your new home and embrace the allure of modern living.

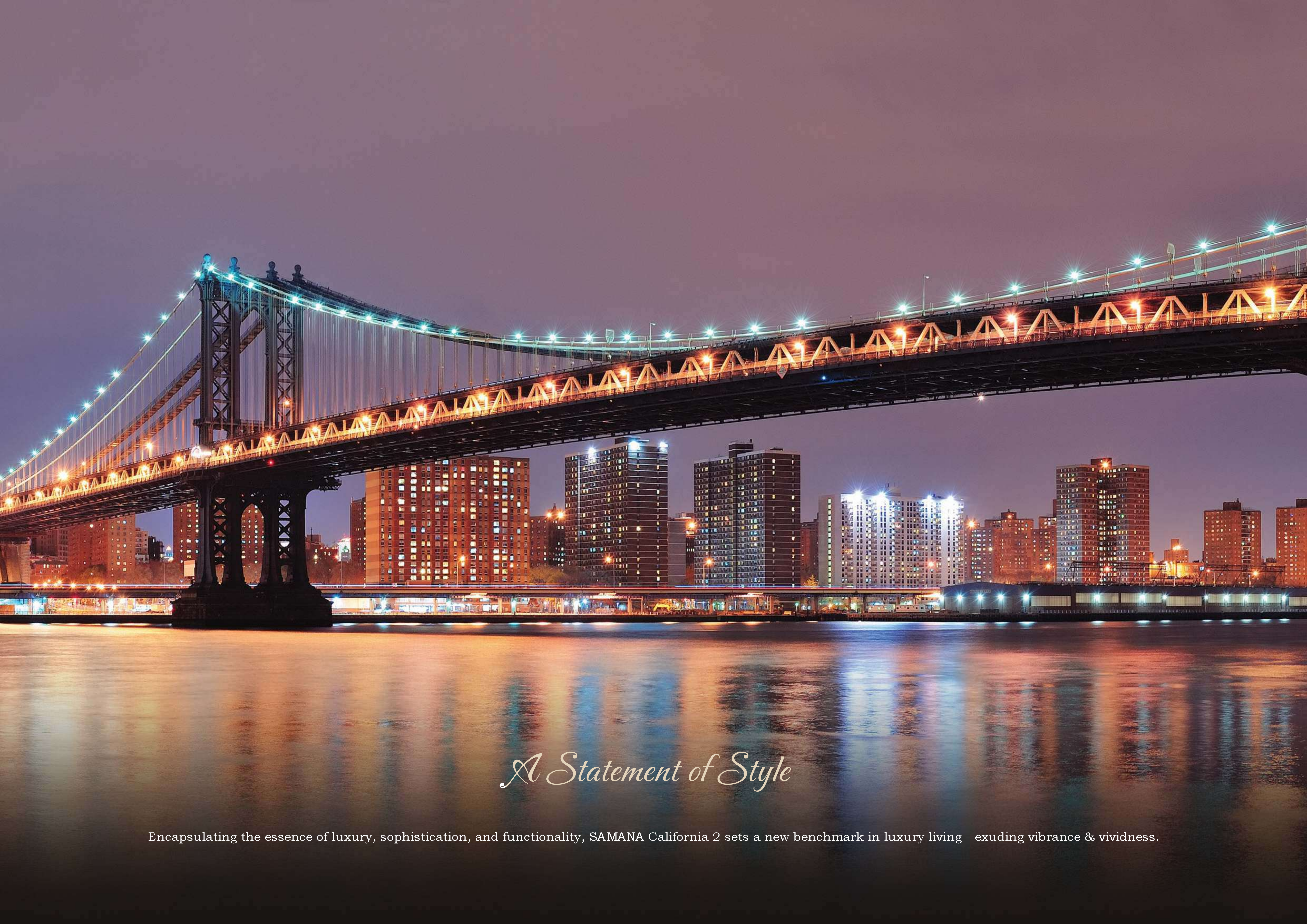
An aerial view of the Dubai skyline at dusk. The Burj Khalifa is the tallest building, reaching into a sky with scattered clouds. Other skyscrapers are illuminated, and a complex highway interchange is visible in the foreground.

## *Dubai as your Investment Hub*

*Dubai is a leading global investment hub, known for its strategic location, robust economy, and business-friendly environment. It has a diversified economy with a strong focus on real estate, tourism, and technology, which makes it an ideal destination for investment. The city's world-class infrastructure and amenities make it an attractive destination for both businesses and individuals. With the exclusive SAMANA California 2 by SAMANA Developers, investors have a golden opportunity to invest and maximize their ROI.*

## *Why Invest in Dubai?*

Among the Safest Cities in the World  
A Tourism Hub  
Business-friendly Environment  
Growing Real Estate Market  
Tax-free Environment  
Fast-growing Tourism Industry



*A Statement of Style*

Encapsulating the essence of luxury, sophistication, and functionality, SAMANA California 2 sets a new benchmark in luxury living - exuding vibrance & vividness.

# *Redefined Comfort*

SAMANA California 2 is designed for those who prefer leisure, lavishness, and a bit of extravagance in life. Featuring state-of-the-art apartments with spacious interiors inside and breathtaking views outside, SAMANA California 2 offers all the amenities that you desire from a luxurious lifestyle.





## *Embrace The Exquisite Charm*

Make a statement redefining luxury living and embrace the Californian lifestyle in Dubai with California 2. It features a design that complements your idea of exquisite living amidst a serene ambience.

An architectural rendering of a modern, multi-story residential building named SAMANA California 2. The building features a unique, sculptural design with curved, cantilevered balconies and a facade of vertical slats. The ground floor is a landscaped area with trees, a walkway, and a car. The sky is a clear blue with some light clouds. The overall aesthetic is clean, modern, and luxurious.

## *Luxurious Opulence*

Indulge in an array of thoughtfully curated amenities designed to enhance your lifestyle at SAMANA California 2. Dive into the refreshing pool, relax in the comfort of your private pool set perfectly within your apartment, rejuvenate at the state-of-the-art fitness center, and unwind in the meticulously landscaped gardens. Experience luxury at its best and embrace the opulence.







*Your Gateway to Ultimate Comfort*

A young man and woman are sitting in the cockpit of a boat, leaning towards each other and smiling. The man is wearing a black polo shirt, and the woman is wearing a black sleeveless top, sunglasses, and a straw hat with a black ribbon. The boat's interior features white vinyl seating with red piping and a dashboard with several analog gauges. The background shows a marina with other boats.

*Style & Substance*

SAMANA  
**CALIFORNIA 2**

# *Transition to Luxury Starts Here*

Elegance gets redefined in the heart of the city with SAMANA California 2 - where modernity meets sophistication. A towering marvel of architecture that captivates with its sleek lines and enchanting presence. It is a seamless blend of form and function, inviting you to explore the world within.



SAMANA  
CALIFORNIA 2

*Serenity Amidst the Bustle*



*Dive into Relaxation*



SAMANA  
CALIFORNIA 2

*Artistic Expression*



*Architectural Harmony*





*Breathing Life into Dreams*



# Amenities



Kids Play Area



A Luxurious & Large Leisure Pool Deck



Water Feature



Kids Pool



Main Pool



Full Health Club Indoor & Outdoor Gym



Apartments with Private Pools



Greenery



Jogging Track



Outdoor Cinema



Outdoor Lounge



Sauna & Steam Room



*Vibrant Living*



*A World of Lavish Comforts*



CALIFORNIA

*Immaculate Style*



SAMANA  
CALIFORNIA 2

*Embodying Sophistication*

SAMANA  
CALIFORNIA 2



*Impeccably Stylish*



SAMANA  
CALIFORNIA 2

*Embodiment of Aesthetics*





*Signature Living Spaces*



*A Masterpiece of Comfort*





*Best in Design & Functionality*



*An Impression of Excellence*



LET'S  
DO  
THIS

*Your Fitness Haven*

*Unit Layout*

**SAMANA**  
**CALIFORNIA 2**

**SAMANA**  
**CALIFORNIA 2**





**Studio**  
WITH POOL



**1 BR**  
WITH POOL



**1 BR**  
WITH POOL





# 2 BR Duplex

WITH POOL



BURJ KHALIFA

BURJ AL ARAB

MALL OF EMIRATES

ATLANTIS THE PALM, DUBAI

Palm Jumeirah  
نخلة الجميرة

AL BARSHA 1  
البرشاء 1

BARSHA HEIGHTS

AL BARSHA  
البرشاء

JUMEIRAH VILLAGE CIRCLE  
قرية جميرا  
الداخيرية

Ain Dubai  
Dubai Hor  
Temporarily C

DUBAI EYE

DUBAI MARINA  
دبي مارينا



Parkside  
Apartment

Expo Backpackers

IBN BATTUTA MALL



AL FURJAN

ECOS Dubai Hotel  
at Al Furjan

JEBEL ALI VILLAGE  
قرية جبل علي

The Manor by JA

Premier Inn Dubai  
Investments Park

NMC Royal Hospital, DIP  
مستشفى ان ام دبي

Guru Nanak  
Darbar Gurudwara

Besto  
Hypermarket-Jabel Ali  
تسكو هايبرمارك

JEBEL ALI

Carrefour

*Samana California 2 lies between Sheikh Zayed Road and Sheikh Mohammed Bin Zayed Road. It provides you with easy access to the prime destinations of the city.*

Ibn Battuta Mall	0-5 min
Dubai Eye	0-5 min
Dubai Marina	0-5 min
Blue Waters	0-5 min
Beach JBR	0-5 min
Jumeirah Lake Towers	0-5 min
Emirates Golf Club	5-10 min
Burj Khalifa	5-10 min
Dubai Mall	5-10 min
Global Village	10-15 min
IMG World	10-15 min
Dubai Airport	15-20 min

