



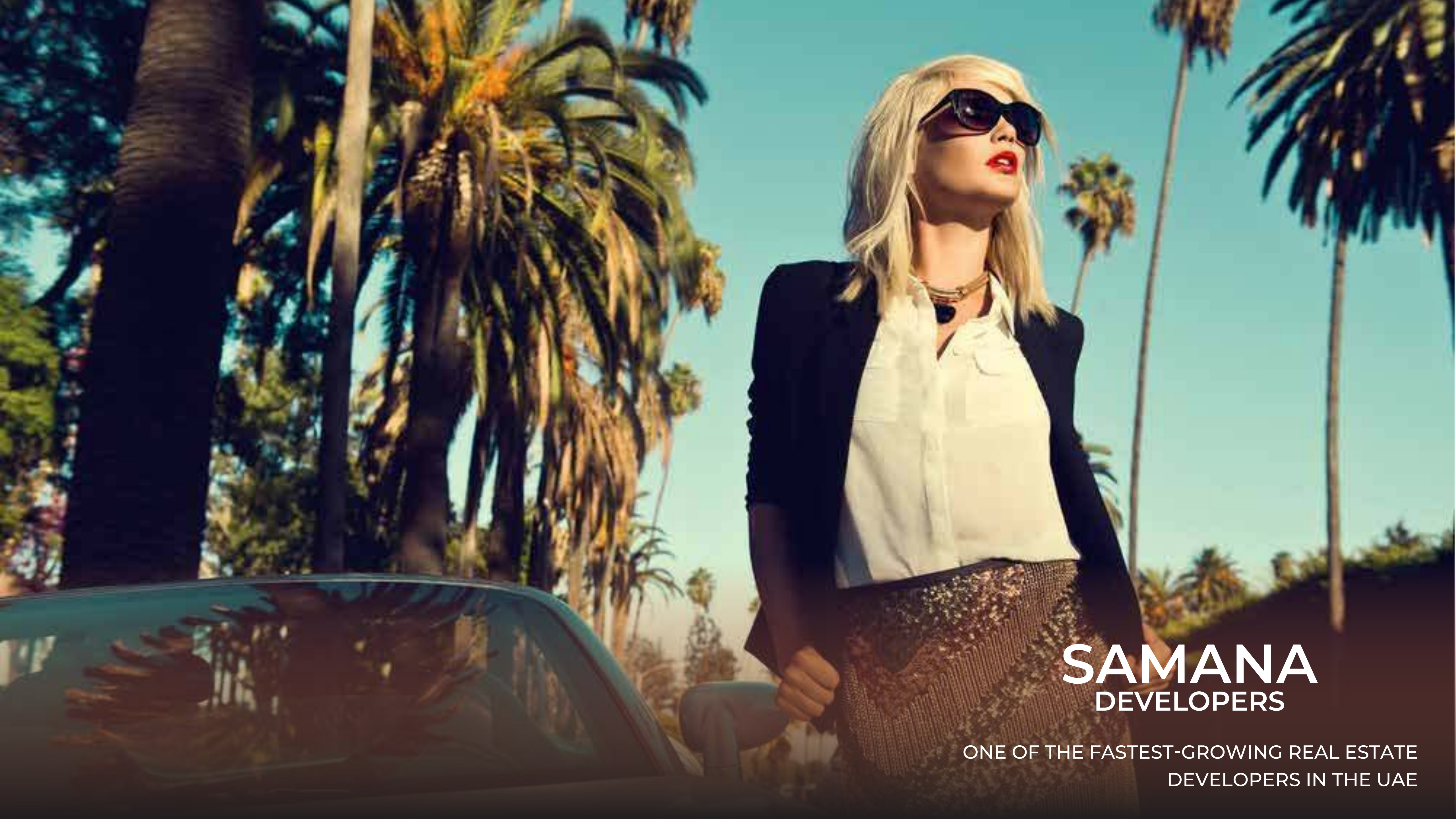
SAMANA
DEVELOPERS

The Rhythm of Life

SAMANA
CALIFORNIA



Welcome to the bustling city life and find your peace amid the chaos with – SAMANA California by SAMANA Developers. Nestled in the heart of Dubai's prime location, this opulent property offers an unparalleled luxury living experience. With its sleek contemporary design and breathtaking panoramic views of the city skyline, it exudes sophistication and grandeur.



SAMANA

DEVELOPERS

ONE OF THE FASTEST-GROWING REAL ESTATE
DEVELOPERS IN THE UAE



SAMANA
CALIFORNIA

A PROJECT BY AN AWARD WINNING DEVELOPER



SAMANA CALIFORNIA

The Rhythm of Life

Immerse yourself in a captivating fusion of Californian lifestyle and Dubai's cosmopolitan allure to experience a truly unique and extraordinary living environment. Nestled in one of the prime locations in Dubai - Al Furjan, SAMANA California captures the essence of California's vibrant elegance and brings it to the heart of this bustling city.

From the modish architecture to the futuristic interior design, SAMANA California reflects luxury in its finest form. Its proximity to iconic landmarks and renowned destinations ensures a cosmopolitan lifestyle while maintaining an oasis of tranquility within its secure gated community. At SAMANA California, every moment is filled with possibilities, where modern convenience seamlessly intertwines with everyday living.

DUBAI AS YOUR INVESTMENT HUB

Dubai is a leading global investment hub, known for its strategic location, robust economy, and business-friendly environment. It has a diversified economy with a strong focus on real estate, tourism, and technology, which makes it an ideal destination for investment. The city's world-class infrastructure and amenities make it an attractive destination for both businesses and individuals. And with the exclusive SAMANA California by SAMANA Developers, investors have a golden opportunity to invest and maximize their ROI.

WHY INVEST IN DUBAI?

- Among the Safest Cities in the World
- A Tourism Hub
- Business-friendly Environment
- Growing Real Estate Market
- Tax-free Environment
- Fast-growing Tourism Industry



Live in the heart of the city and enjoy world-class amenities at SAMANA California



Kids Pool



Full Health Club Indoor & Outdoor Gym



Greenery



Jogging Track



Outdoor Cinema



A Luxurious & Large Leisure Pool Deck



Sauna & Steam Room



Barbeque Area



Kids Play Area



Main Pool



Private Pools Inside Apartments



Water Fall Feature



Splash Pad for Kids



Rooftop Tennis Padel Court



Live the Bliss



Comfort, Opulence & Refinement



Invigorate Your Senses



Immaculately Stylish



Built for Shaping Memories



Dwell in Fun



Open Cinema



A Time to Unwind



SAMANA
CALIFORNIA

Timeless Beauty



Reflecting Sophistication



Enchanting Ambiance



Impressive Design



Rooftop Amenities



Stylishly Stunning



Top Notch Facilities



Live the Thrill



Exquisite Living



Classy And Contemporary



Architectural Marvel



Modern Grandeur



Radiating Timeless Charm



SAMANA
CALIFORNIA









STUDIO WITH POOL



1 BEDROOM WITH POOL



2 BEDROOM WITH POOL



2 BEDROOM DLX WITH POOL



Awards & Recognitions

DESIGN MIDDLE EAST AWARD 2019



BEST PROJECT OF THE YEAR 2022



DESIGN MIDDLE EAST AWARD 2022



TOP POPULAR DEVELOPER 2023



EXCELLENCE IN AFFORDABLE LUXURY IN REAL ESTATE AWARD 2020



SUSTAINABLE PROJECT OF THE YEAR AWARD



EMERGING CEO OF THE YEAR AWARD

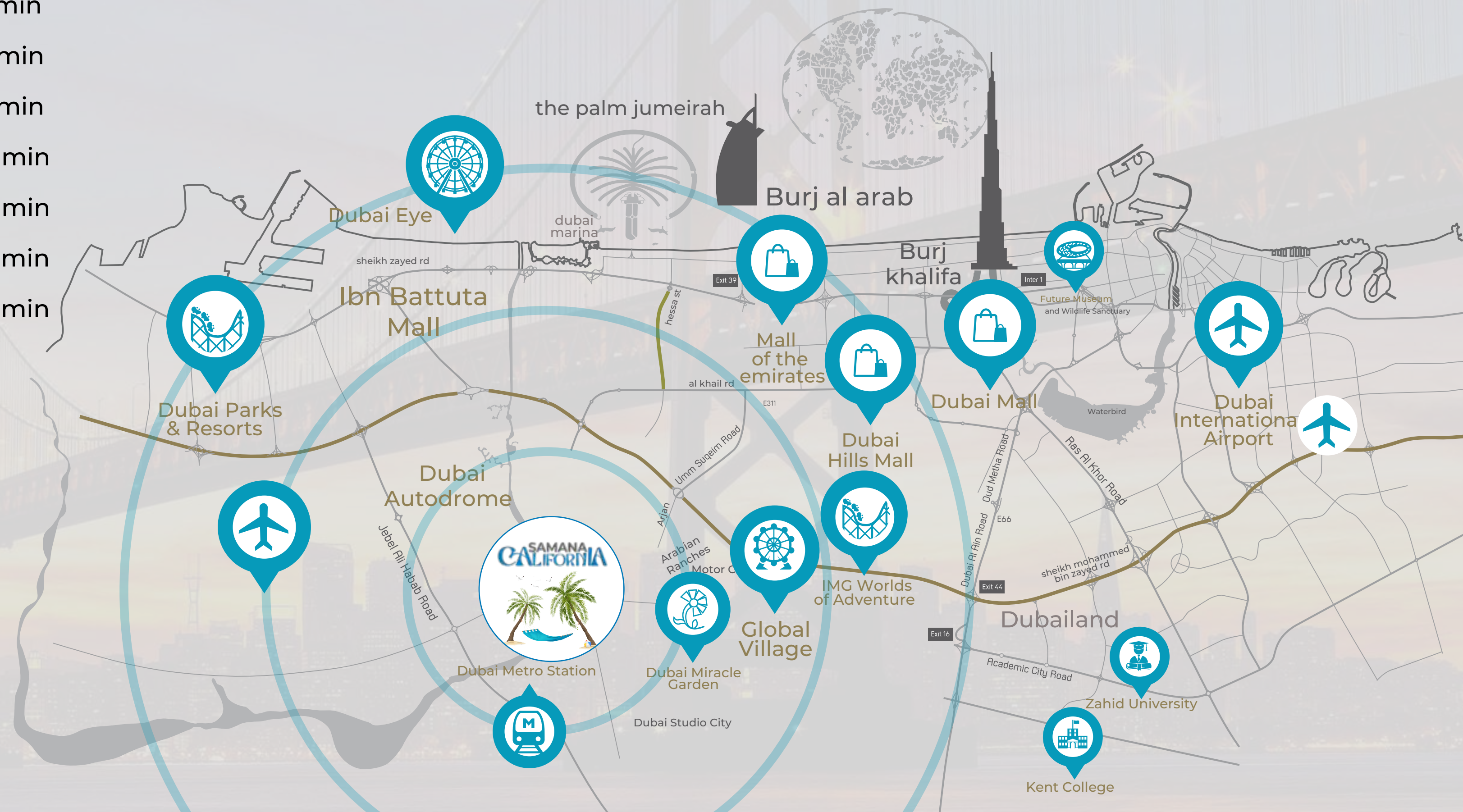


Easy Access to All Facilities

SAMANA CALIFORNIA IS LOCATED AT AL FURJAN, WHICH LIES BETWEEN SHEIKH ZAYED ROAD AND SHEIKH MOHAMMED BIN ZAYED ROAD. AL FURJAN PROVIDES YOU WITH EASY ACCESS TO THE PRIME DESTINATIONS OF THE CITY.

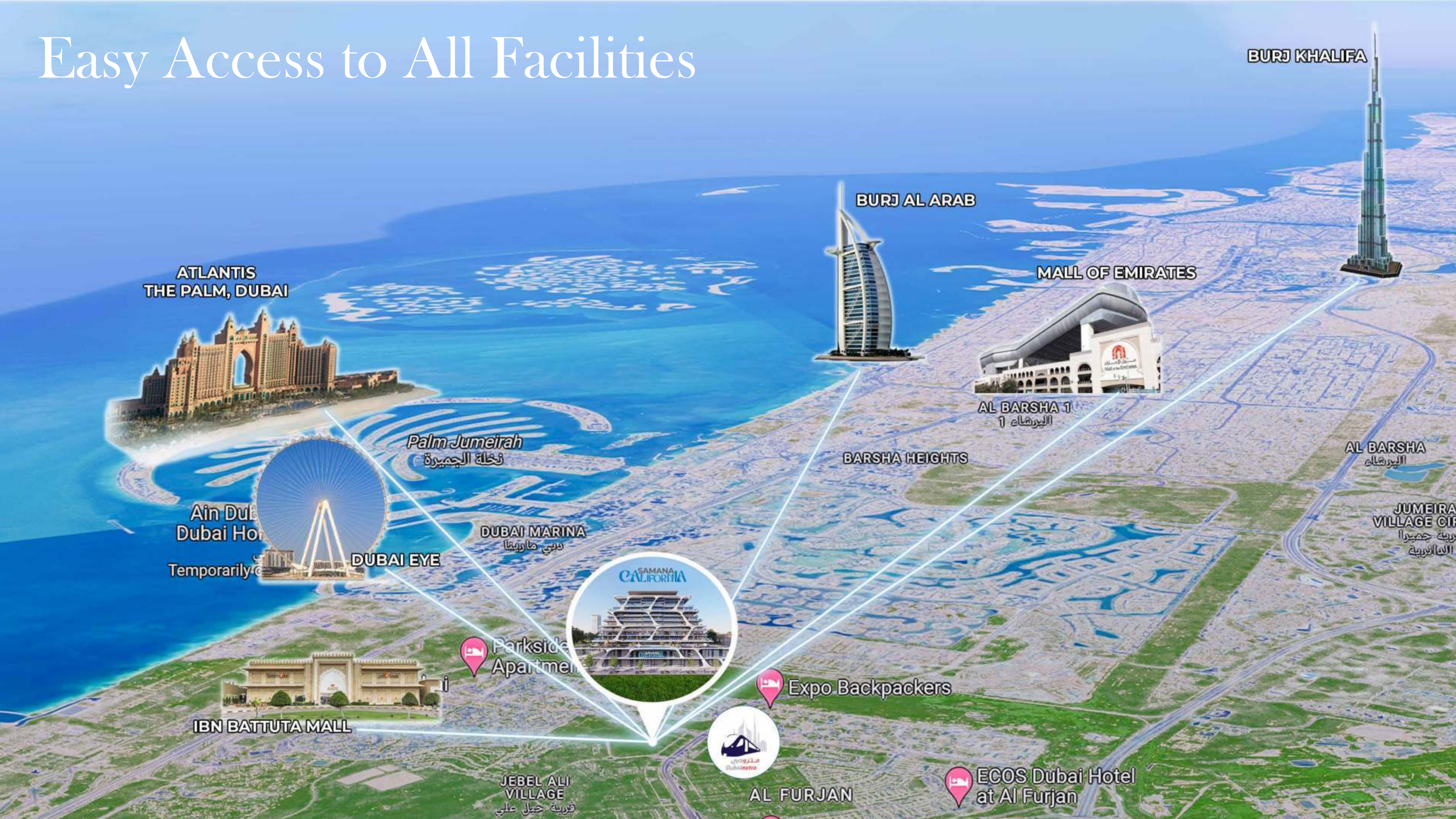
- The Arbor School 7 min
- Chubby Cheeks Nursery 8 min
- The University of Balamand 11 min
- Ibn Battuta Mall 11 min
- Dubai Marina 16 min
- Beach JBR 16 min
- Jumeirah Lake Towers 17 min
- Emirates Golf Club 17 min

- Knowledge Park 18 min
- The Els Club 19 min
- Global Village 20 min
- IMG World 20 min
- Down Town 20 min
- Burj Khalifa 20 min
- Dubai Mall 20 min



*All distances are approximate. Addresses are indicative and used for marketing purpose.

Easy Access to All Facilities



ATLANTIS
THE PALM, DUBAI

BURJ KHALIFA

BURJ AL ARAB

MALL OF EMIRATES

AL BARSHA 1
البرشاء 1

BARSHA HEIGHTS

AL BARSHA
البرشاء

JUMEIRA
VILLAGE CITY
قرية جميرا
البلدية

Palm Jumeirah
نخلة الجميرة

Ain Dubai
Dubai Hotel
Temporarily Closed

DUBAI EYE

DUBAI MARINA
دبي مارينا

IBN BATTUTA MALL

Parkside
Apartments

Expo Backpackers

ECOS Dubai Hotel
at Al Furjan

AL FURJAN

JEBEL ALI
VILLAGE
قرية جبل علي

SAMANA
CALIFORNIA

