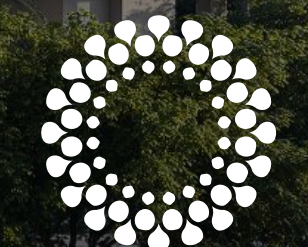


سدر ريزيدنسز
SIDR RESIDENCES

Live in the new centre of Dubai's future

مَن تَطَوِير
DEVELOPED BY



مدينة إكسبو دبي
EXPO CITY DUBAI

Live in the new centre of Dubai's future at Sidr Residences - a contemporary, urban village in Expo City Dubai. Inspired by the Sidr tree, known for its resilience and shade, Sidr Residences offers a lifestyle that combines eco-friendly apartments within a connected, environmentally aware community.

Comprising three towers, close to the conveniences of Expo Downtown and Expo's commercial area, within walking distance to the metro and at the doorstep of Al Maktoum International Airport, Sidr is an ideal location for future-ready living.

Sidr Residences is designed for residents who value cutting-edge technology and sustainability within a smart city environment. With home automation features across a 5G-connected site, Sidr offers a premium living experience for those seeking innovation without compromising on comfort or convenience.

سدر ريزيدنسز
SIDR RESIDENCES

في مدينة إكسبو دبي
AT EXPO CITY DUBAI

Expo City Dubai
master plan



Expo City Dubai master plan: Overview

Launched by His Highness Sheikh Mohammed bin Rashid Al Maktoum, Vice President and Prime Minister of the UAE and Ruler of Dubai, the new master plan for Expo City Dubai places the site of the former World Expo at the new centre of Dubai's future.

A global model for urban excellence, it reaffirms the city's role as a focal point on the 2040 Urban Master Plan as it becomes a hub for the key sectors driving the delivery of the Dubai Economic Agenda (D33).

The city will cover a total of 3.5sqkm, embracing a gradual phased development that will adapt to evolving needs. Expo City will be home to 35,000 residents and 40,000 professionals.

The master plan represents an unparalleled opportunity for businesses, investors and developers looking to take advantage of Expo City's prime location and world-class environment in the high-growth Dubai South area.



An integrated, connected city

Surrounded by a world-class network of highways and served by a dedicated metro station, Expo City's location in the high-growth Dubai South area offers easy access to Al Maktoum International Airport, Jebel Ali Port and the Dubai Logistics Corridor, with Dubai Exhibition Centre at the doorstep.

ABU DHABI



Abu Dhabi International Airport (AUH)

Palm Jebel Ali

Jebel Ali Port

Dubai Marina

Palm Jumeirah

Burj Al Arab

Burj Khalifa

DIFC

SHARJAH



Al Maktoum International Airport (DWC)

Dubai Exhibition Centre

DIP

5 mins.

10 mins.

15 mins.

25 mins.

35 mins.

50 mins.

Dubai Metro

Dubai International Airport (DXB)

Meydan



سدر ريزيدنسز SIDR RESIDENCES

في مدينة إكسبو دبي
AT EXPO CITY DUBAI

Larger-than-average one- to four-bedroom apartments

Floor-to-ceiling windows and spacious balconies

Panoramic terraces with stunning views of Al Wasl Plaza, Terra and the UAE Pavilion

Smart living of tech-enabled 5G-connected environments with home automation





سيدر ريزيدنسز
SIDR RESIDENCES

في مدينة إكسبو دبي
AT EXPO CITY DUBAI

Swimming pools, children's splash pad, pool decks, cabanas and spa pools

Nature-inspired kids' play areas

سدر ريزيدنسز
SIDR RESIDENCES

في مدينة إكسبو دبي
AT EXPO CITY DUBAI

Community gardening available
at the podium level, integrated
into the landscape amenities

Outdoor dining spaces, open-air
paved areas, ideal for barbecues
and get-togethers



سدر ريزيدنسز SIDR RESIDENCES

في مدينة إكسبو دبي
AT EXPO CITY DUBAI

15-minute walkable urban
community with convenient
access to key landmarks and easy
connectivity to Dubai Metro

Convenience stores, retail and
F&B options



سدر ريزيدنسز
SIDR RESIDENCES

في مدينة إكسبو دبي
AT EXPO CITY DUBAI

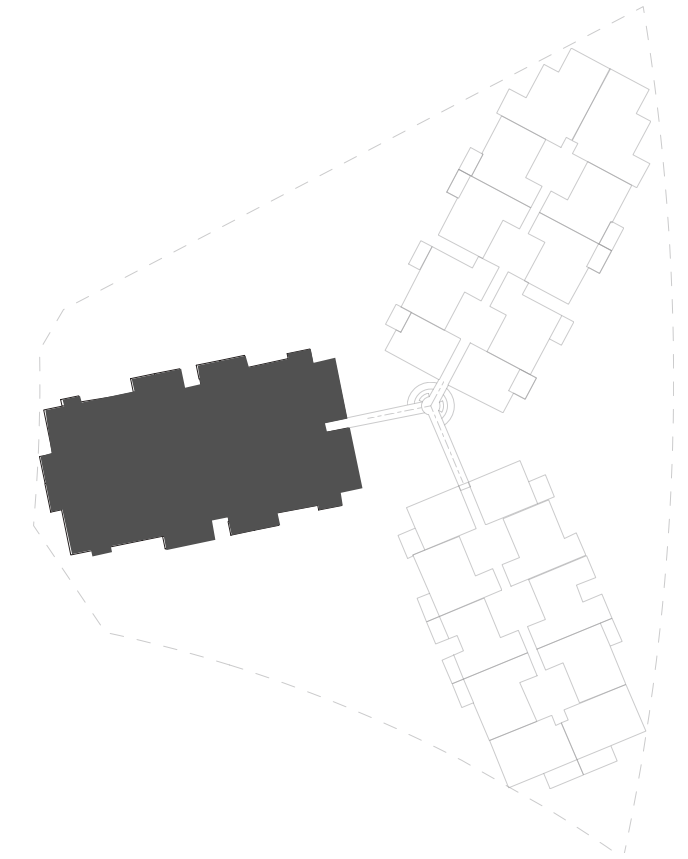
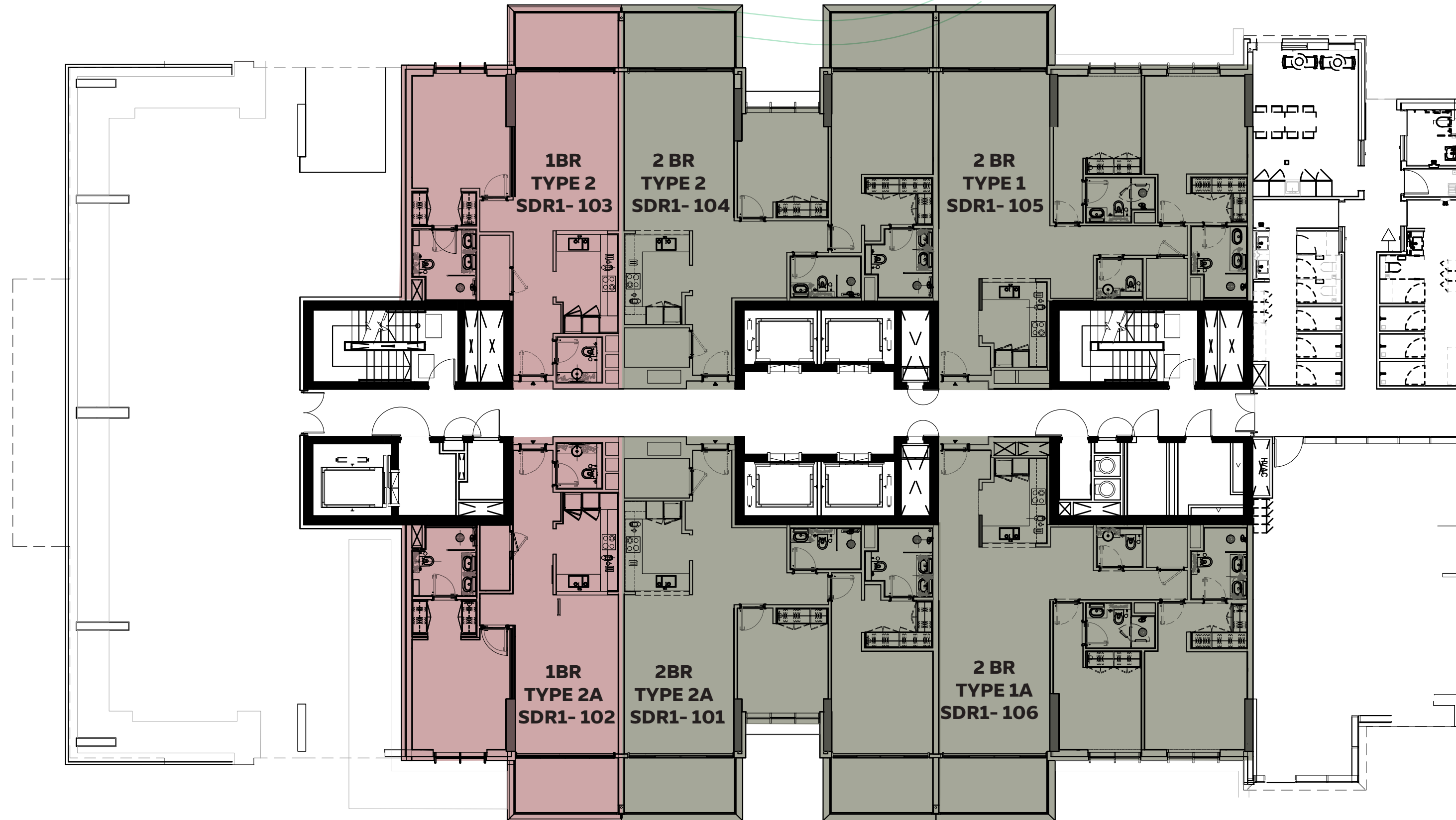
Function rooms, reading
rooms, social spaces and
meditation pods

Kids' toy library



Sidr Residences 1 - floor plans

سدر ريزيدنسز
SIDR RESIDENCES



SIDR RESIDENCES 1 1ST FLOOR

- 1BR TYPE 2 / TYPE 2A
- 2BR TYPE 1 / TYPE 1A
2BR TYPE 2 / TYPE 2A

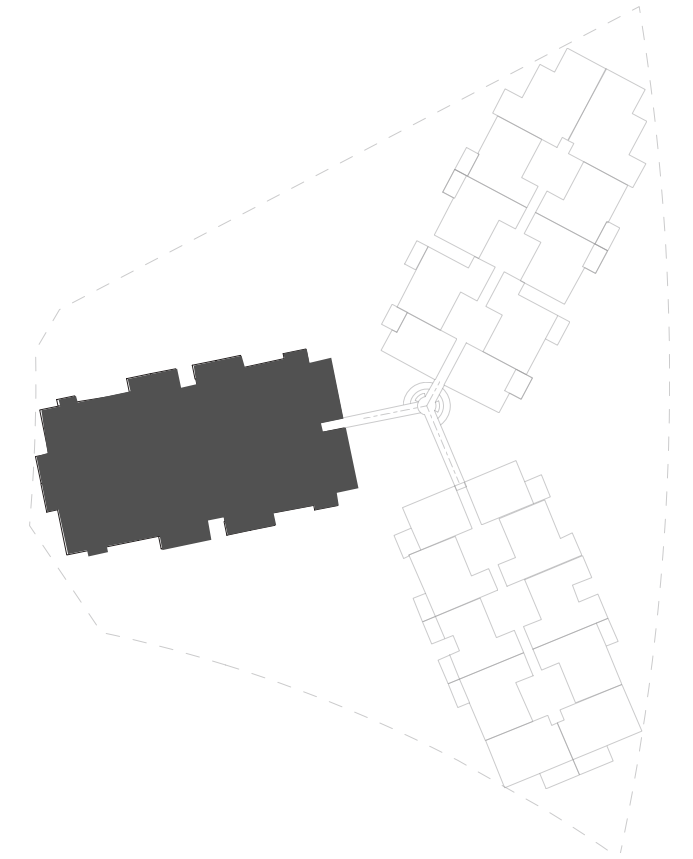
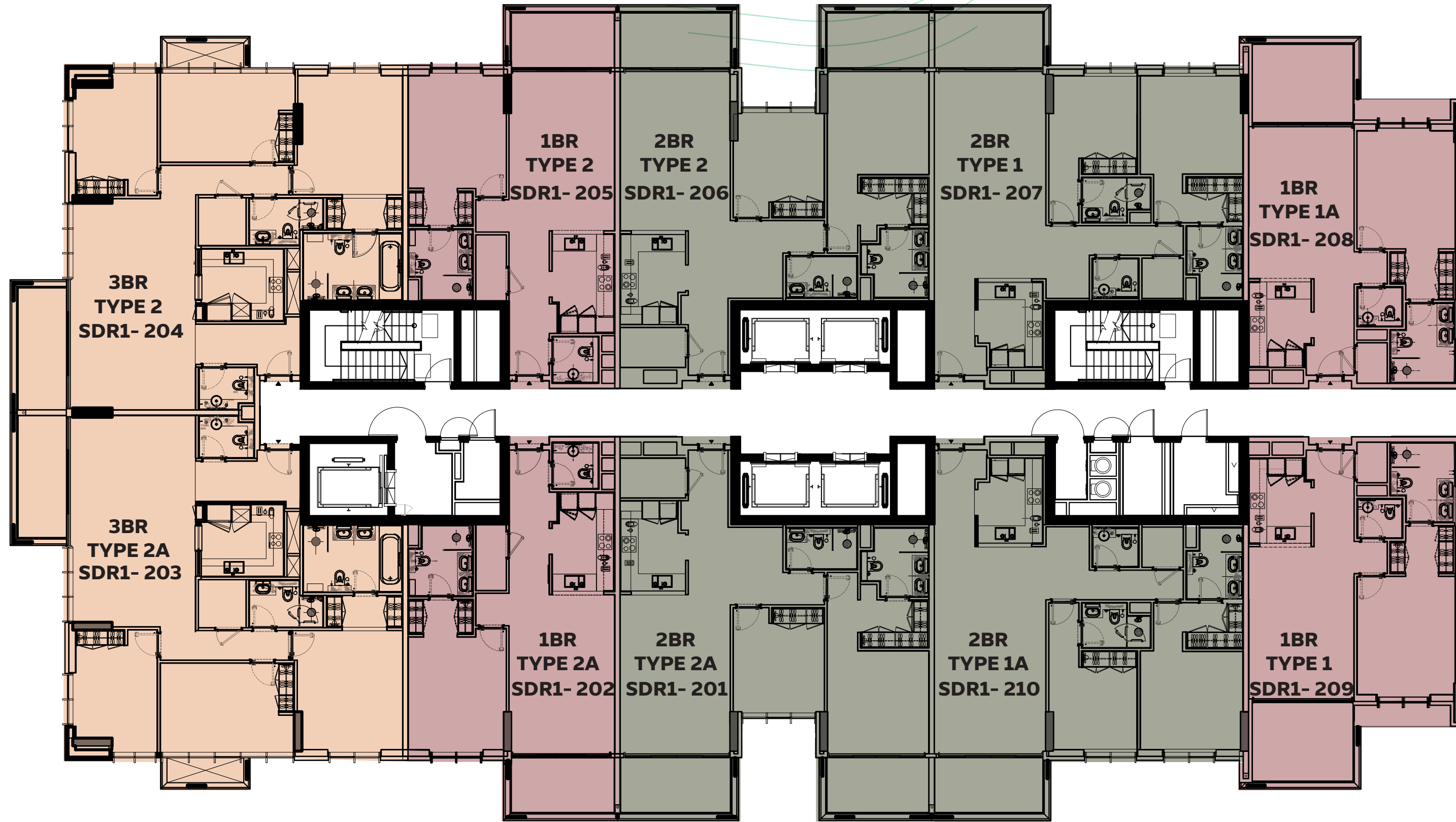
DEVELOPED BY



1. All room dimensions are in metric and measured to structural elements, and exclude wall finishes and construction tolerances. 2. All dimensions have been provided by our consultant architects. 3. All materials, dimensions, drawings, features and amenities, are approximate at the time of printing. 4. Actual area may vary from stated area. 5. Drawings are not to scale E&OE. 6. The developer reserves the right to make revisions to the floor plans and any features, materials, dimensions, drawings, and amenities mentioned on this plan and in the brochure without notice. 7. Unit plans may exist in mirrored version.

Sidr Residences 1 - floor plans

سدر ریزیدنسز
SIDR RESIDENCES



SIDR RESIDENCES 1
TYPICAL FLOORS
FROM 2ND TO 15TH FLOOR

- 1BR TYPE 1 / TYPE 1A
1BR TYPE 2 / TYPE 2A
- 2BR TYPE 1 / TYPE 1A
2BR TYPE 2 / TYPE 2A
- 3BR TYPE 2 / TYPE 2A

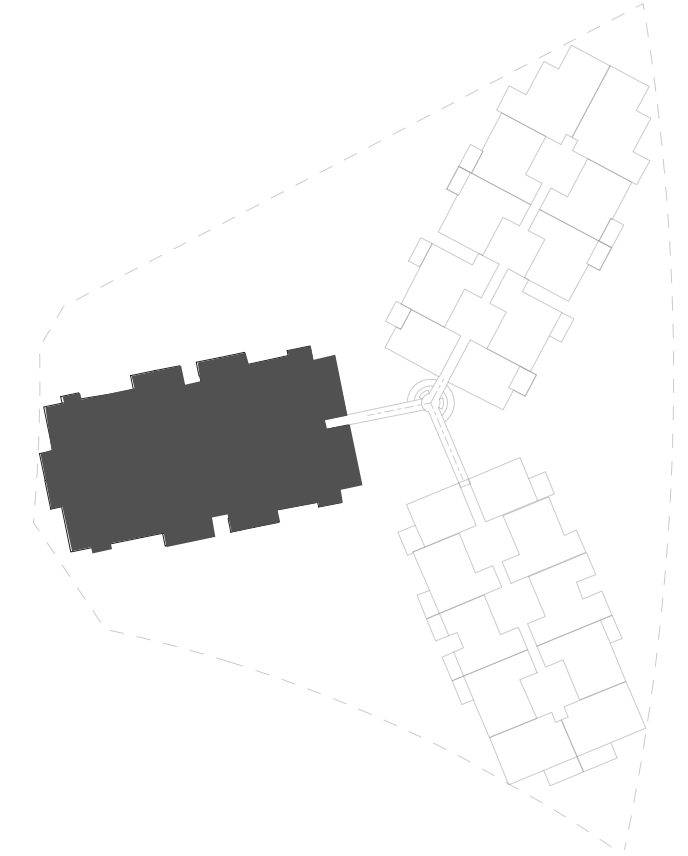
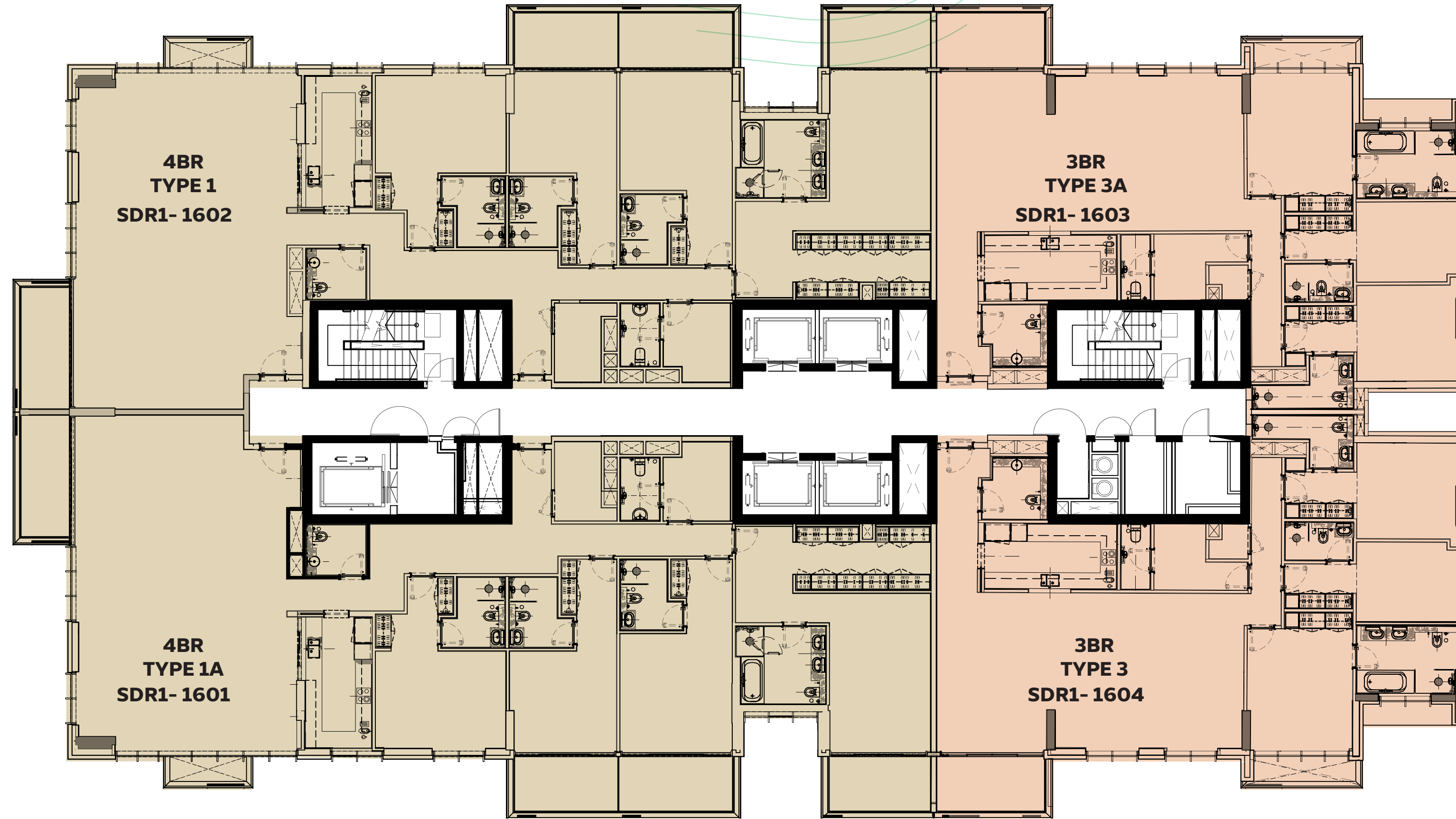
DEVELOPED BY



1. All room dimensions are in metric and measured to structural elements, and exclude wall finishes and construction tolerances. 2. All dimensions have been provided by our consultant architects. 3. All materials, dimensions, drawings, features and amenities, are approximate at the time of printing. 4. Actual area may vary from stated area. 5. Drawings are not to scale E&OE. 6. The developer reserves the right to make revisions to the floor plans and any features, materials, dimensions, drawings, and amenities mentioned on this plan and in the brochure without notice. 7. Unit plans may exist in mirrored version.

Sidr Residences 1 - floor plans

سدر ریزیدنسز
SIDR RESIDENCES

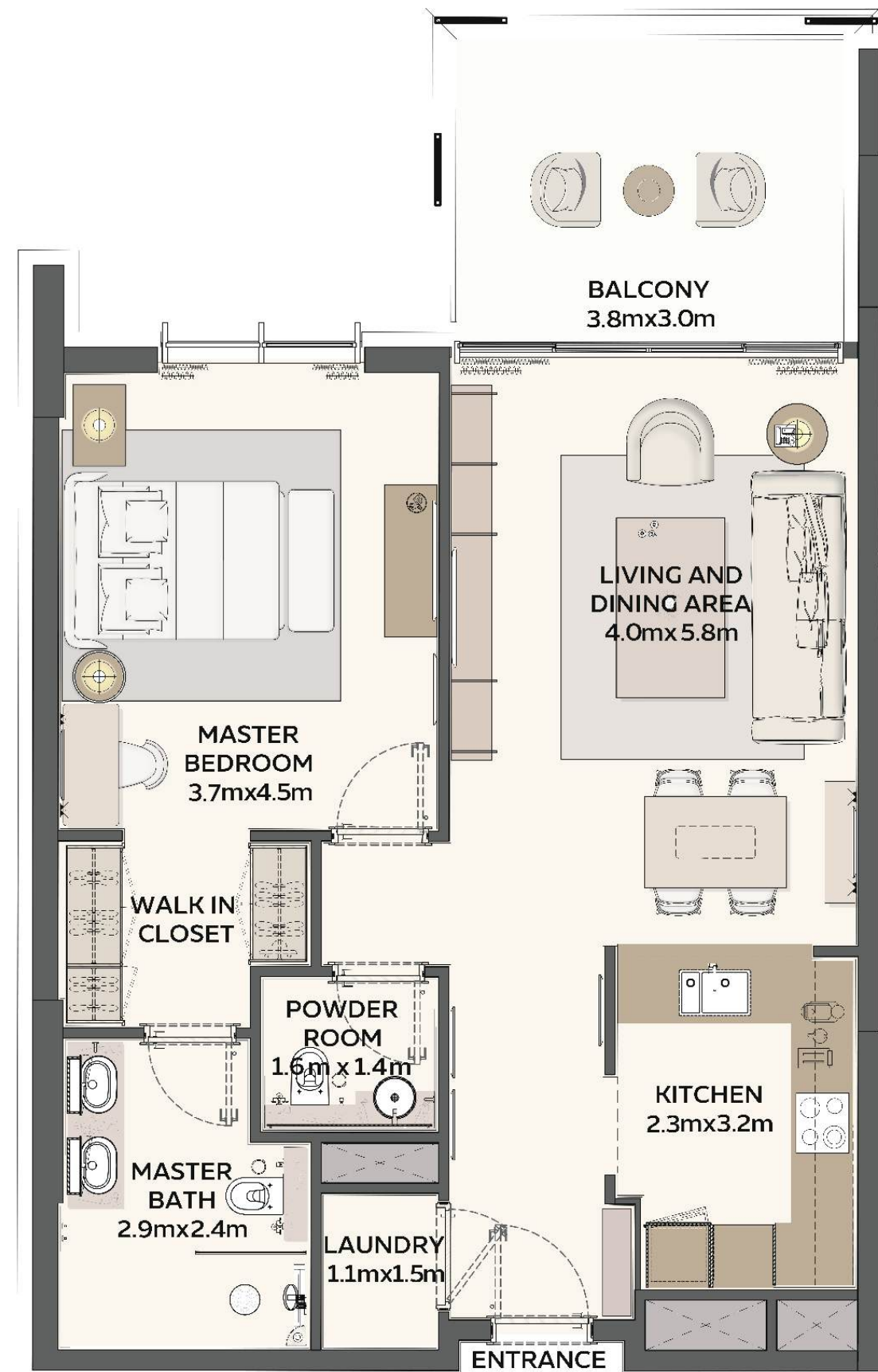


SIDR RESIDENCES 1
16TH FLOOR

- 3BR TYPE 3 / TYPE 3A
- 4BR TYPE 1 / TYPE 1A

Sidr Residences 1 - unit plans

سدر ريزيدنسز
SIDR RESIDENCES

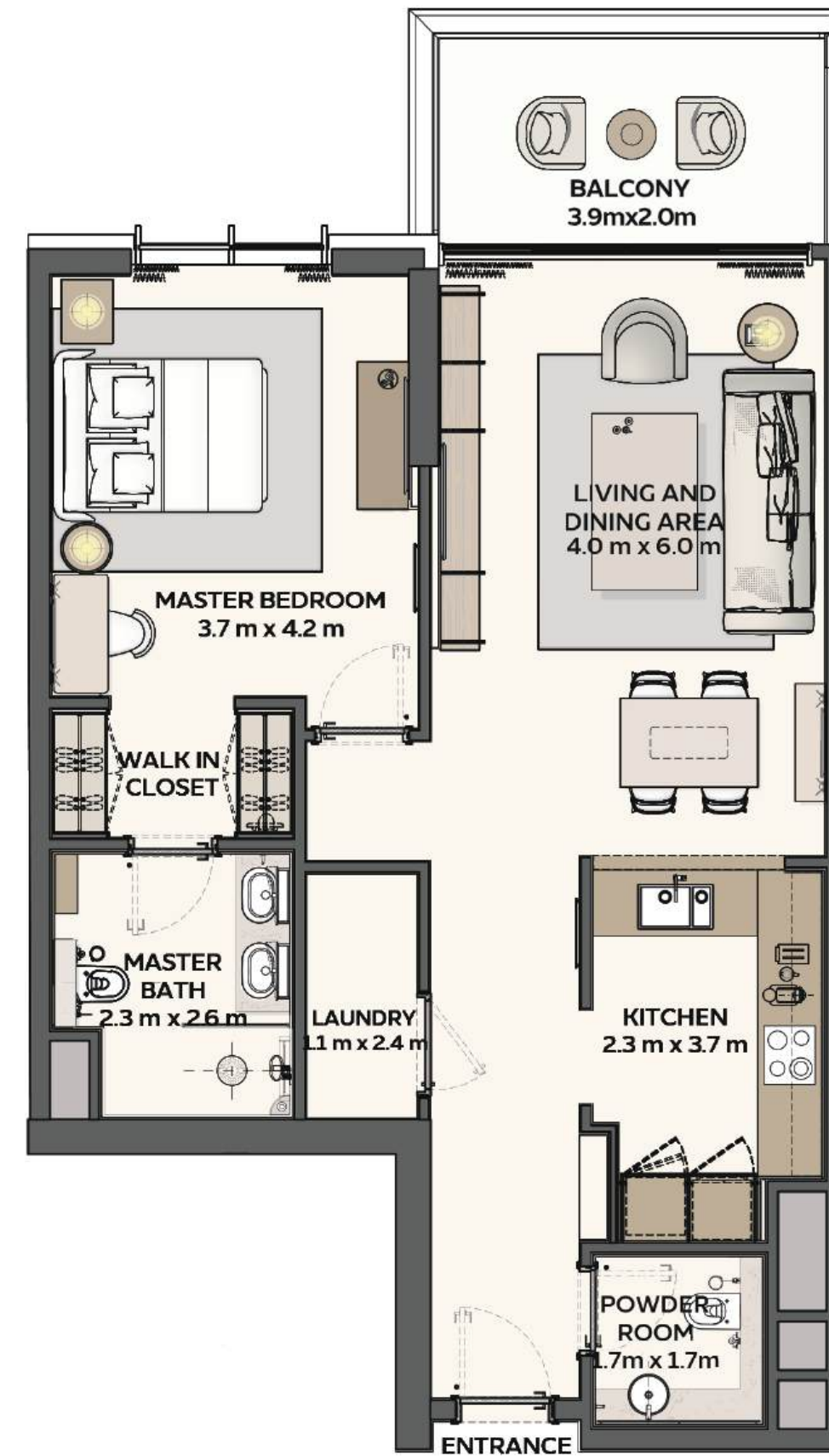


1 BEDROOM TYPE 1

Net Area starting from:
78.74 sqm / 847.55 sqft

Balcony Area starting from:
12.65 sqm / 136.16 sqft

Total Area starting from:
91.39 sqm / 983.71 sqft



1 BEDROOM TYPE 2

Net Area starting from:
83.30 sqm / 896.63 sqft

Balcony Area starting from:
8.86 sqm / 95.37 sqft

Total Area starting from:
92.16 sqm / 992.00 sqft

DEVELOPED BY



1. All room dimensions are in metric and measured to structural elements, and exclude wall finishes and construction tolerances. 2. All dimensions have been provided by our consultant architects. 3. All materials, dimensions, drawings, features and amenities, are approximate at the time of printing. 4. Actual area may vary from stated area. 5. Drawings are not to scale E&OE. 6. The developer reserves the right to make revisions to the floor plans and any features, materials, dimensions, drawings, and amenities mentioned on this plan and in the brochure without notice. 7. Unit plans may exist in mirrored version.

Sidr Residences 1 - unit plans

سدر ريزيدنسز
SIDR RESIDENCES



2 BEDROOM TYPE 1

Net Area starting from:
118.70 sqm / 1277.68 sqft

Balcony Area starting from:
9.28 sqm / 99.89 sqft

Total Area starting from:
127.98 sqm / 1377.57 sqft

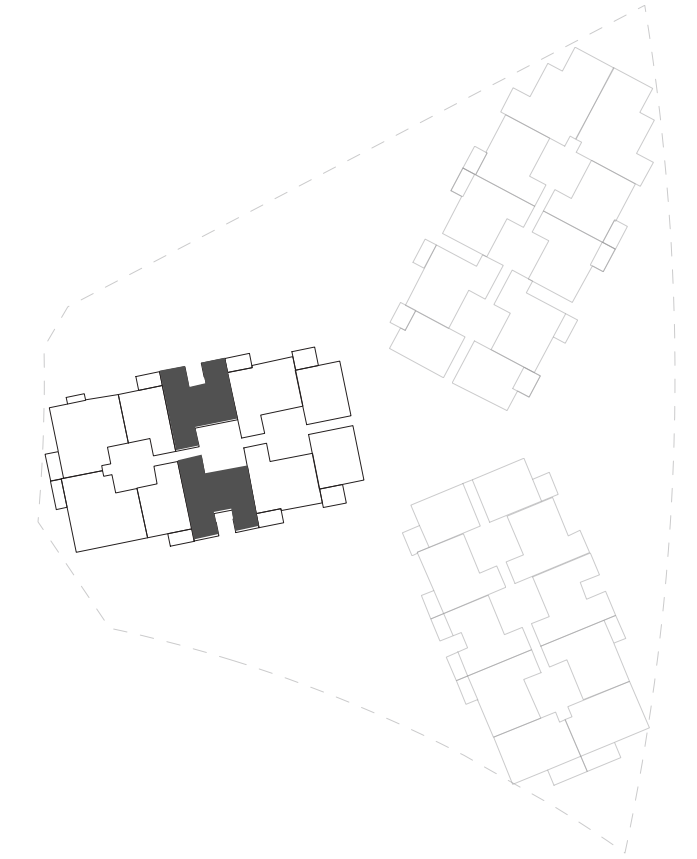
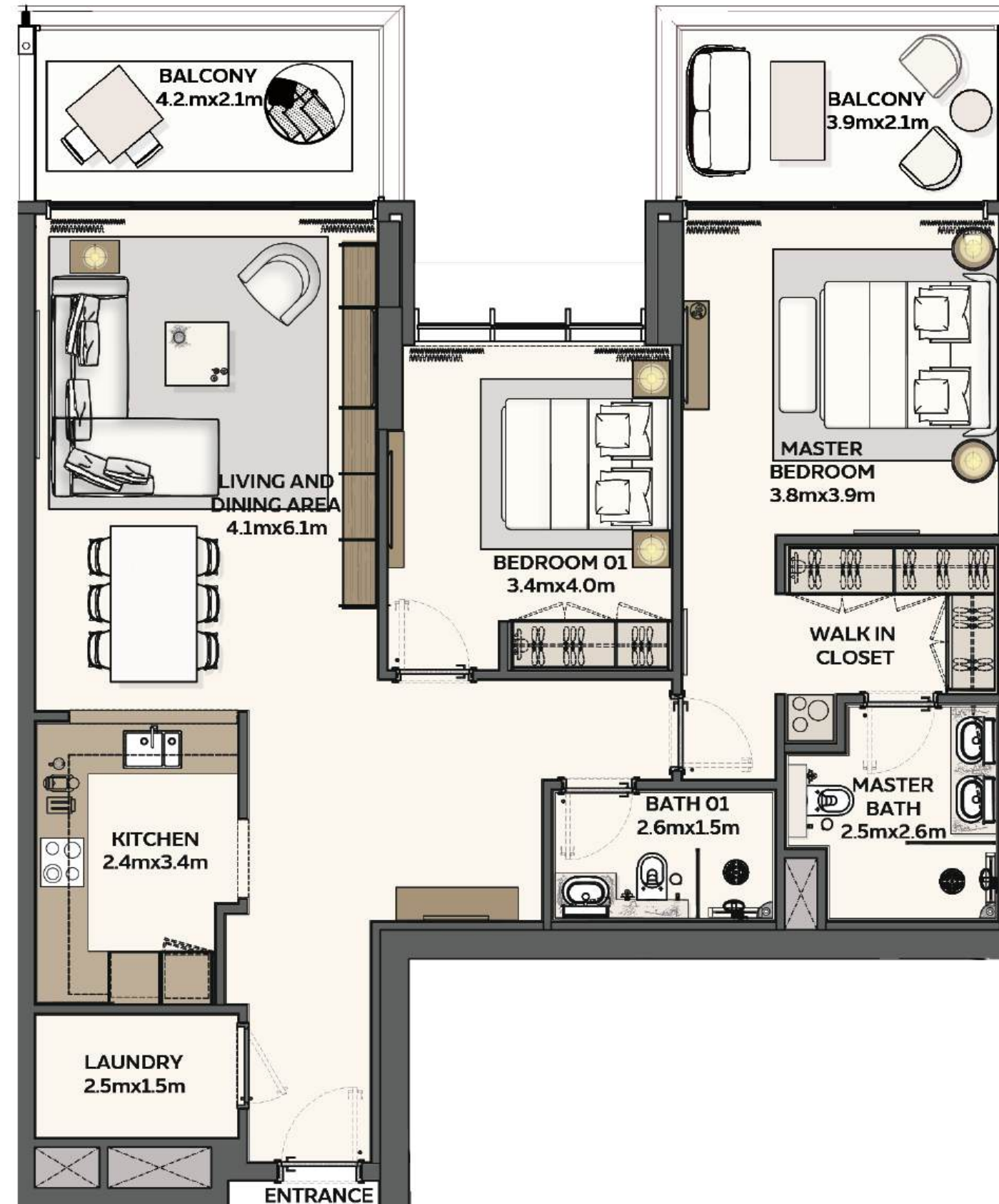
DEVELOPED BY



1. All room dimensions are in metric and measured to structural elements, and exclude wall finishes and construction tolerances. 2. All dimensions have been provided by our consultant architects. 3. All materials, dimensions, drawings, features and amenities, are approximate at the time of printing. 4. Actual area may vary from stated area. 5. Drawings are not to scale E&OE. 6. The developer reserves the right to make revisions to the floor plans and any features, materials, dimensions, drawings, and amenities mentioned on this plan and in the brochure without notice. 7. Unit plans may exist in mirrored version.

Sidr Residences 1 - unit plans

سدر ريزيدنسز
SIDR RESIDENCES



2 BEDROOM TYPE 2

Net Area starting from:
114.26 sqm / 1229.88 sqft

Balcony Area starting from:
18.19 sqm / 195.80 sqft

Total Area starting from:
132.45 sqm / 1425.68 sqft

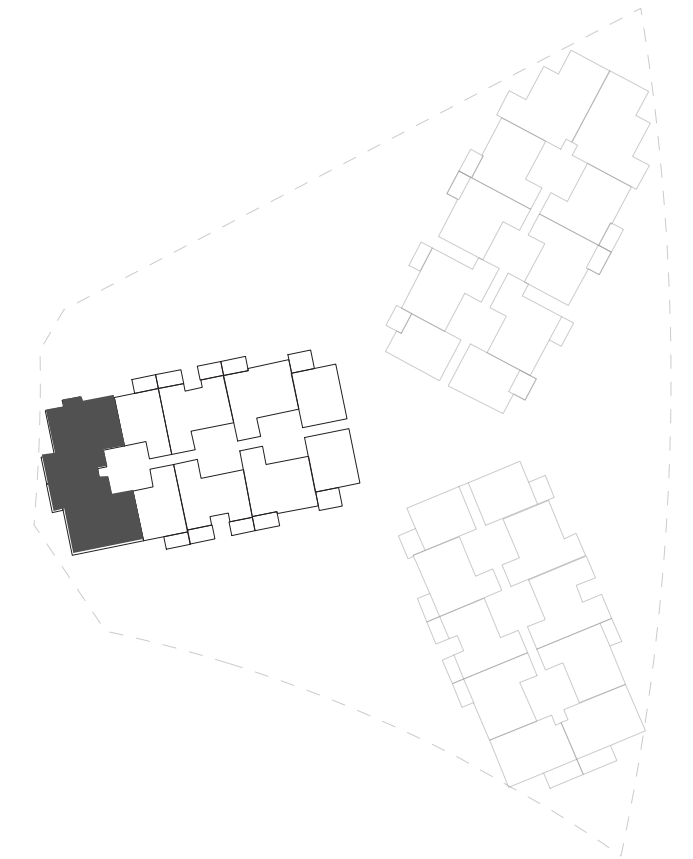
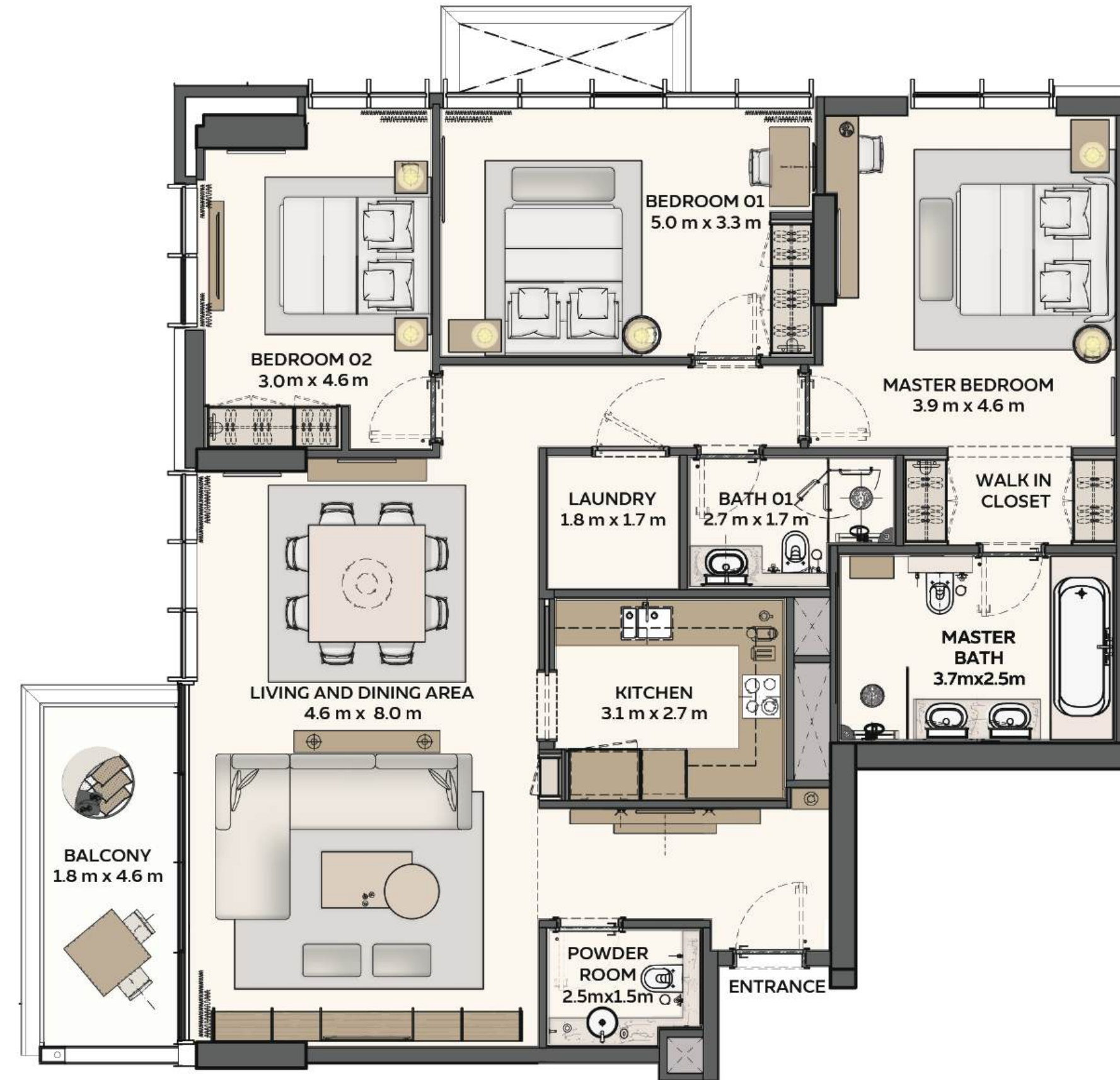
DEVELOPED BY



1. All room dimensions are in metric and measured to structural elements, and exclude wall finishes and construction tolerances. 2. All dimensions have been provided by our consultant architects. 3. All materials, dimensions, drawings, features and amenities, are approximate at the time of printing. 4. Actual area may vary from stated area. 5. Drawings are not to scale E&OE. 6. The developer reserves the right to make revisions to the floor plans and any features, materials, dimensions, drawings, and amenities mentioned on this plan and in the brochure without notice. 7. Unit plans may exist in mirrored version.

Sidr Residences 1 - unit plans

سدر ريزيدنسز
SIDR RESIDENCES



3 BEDROOM TYPE 2

Net Area starting from:
148.26 sqm / 1595.86 sqft

Balcony Area starting from:
9.22 sqm / 99.24 sqft

Total Area starting from:
157.48 sqm / 1695.10 sqft

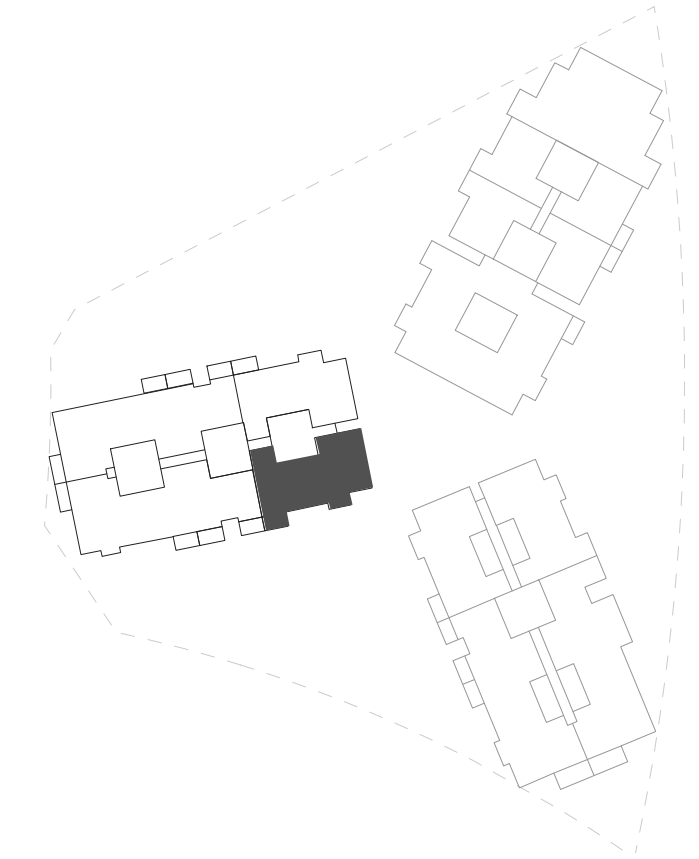
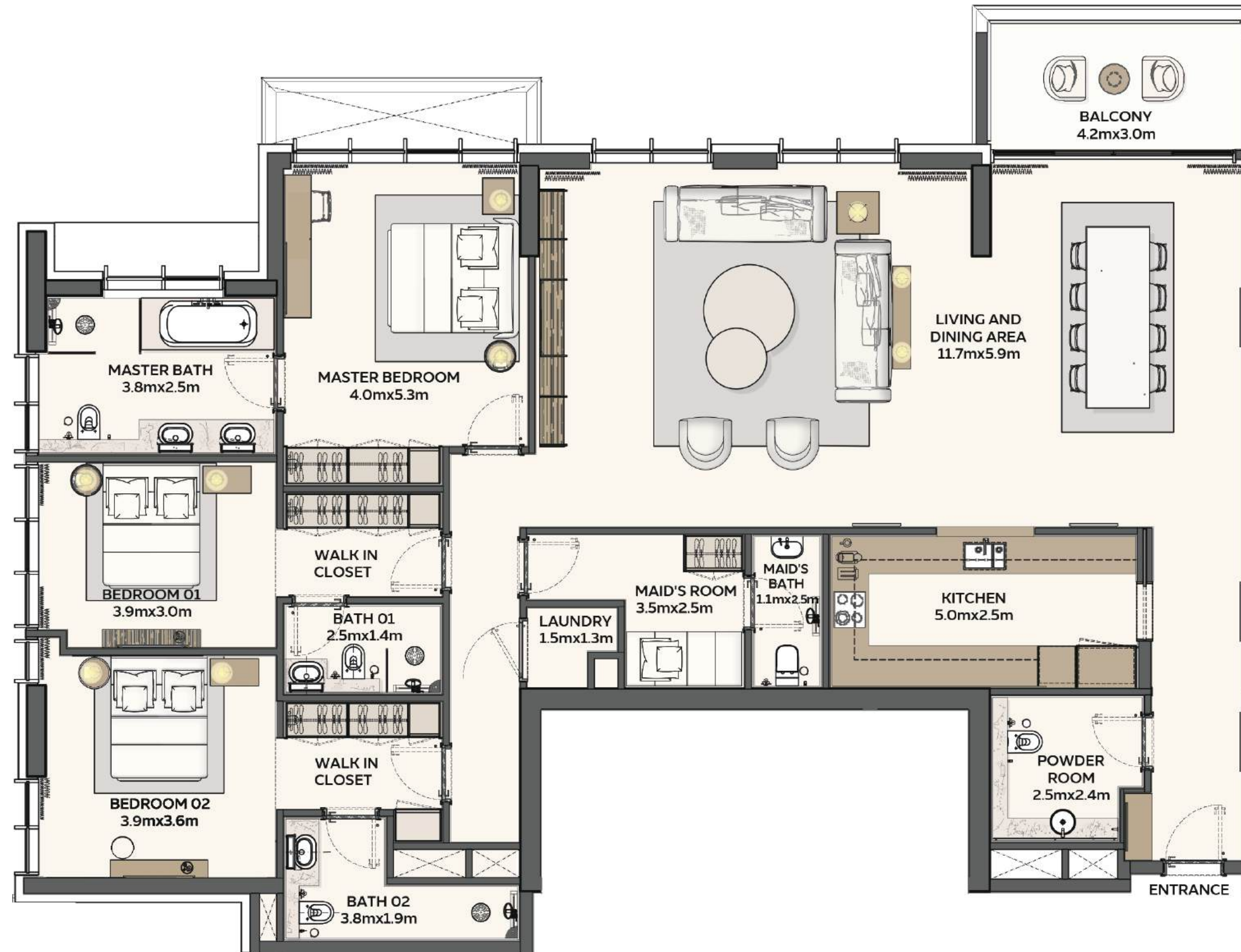
DEVELOPED BY



1. All room dimensions are in metric and measured to structural elements, and exclude wall finishes and construction tolerances. 2. All dimensions have been provided by our consultant architects. 3. All materials, dimensions, drawings, features and amenities, are approximate at the time of printing. 4. Actual area may vary from stated area. 5. Drawings are not to scale E&OE. 6. The developer reserves the right to make revisions to the floor plans and any features, materials, dimensions, drawings, and amenities mentioned on this plan and in the brochure without notice. 7. Unit plans may exist in mirrored version.

Sidr Residences 1 - unit plans

سدر ريزيدنسز
SIDR RESIDENCES



3 BEDROOM TYPE 3

Net Area starting from:
213.02 sqm / 2292.93 sqft

Balcony Area starting from:
9.28 sqm / 99.89 sqft

Total Area starting from:
222.30 sqm / 2392.82 sqft

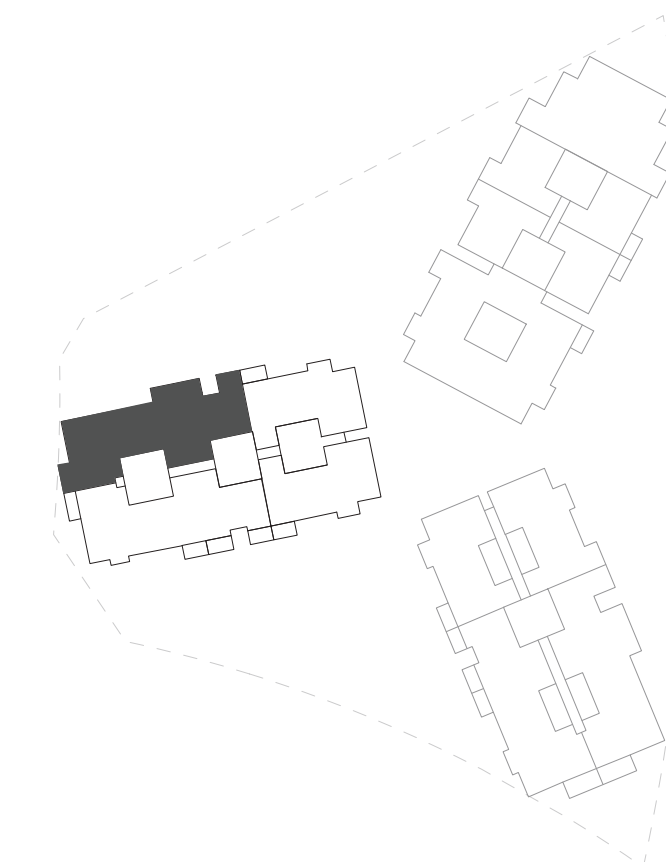
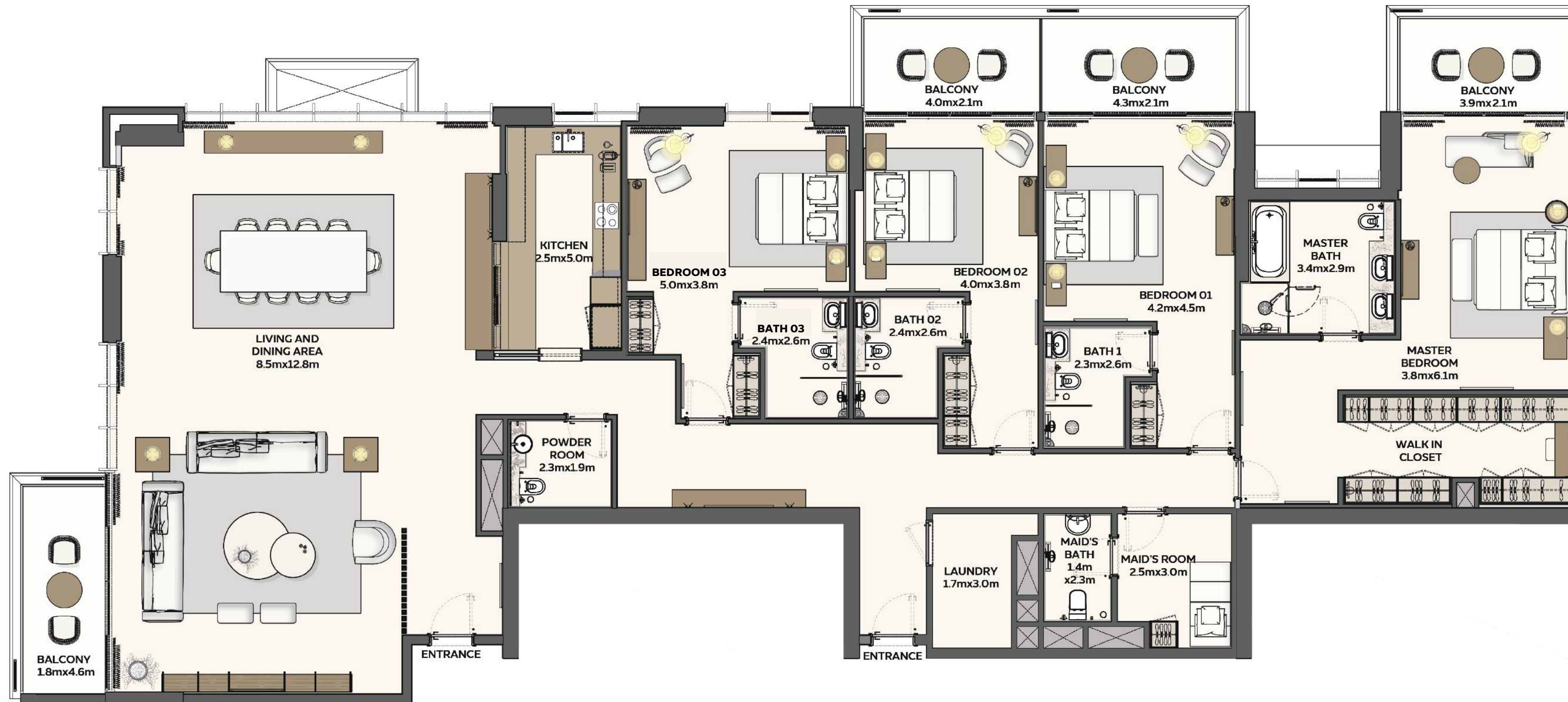
DEVELOPED BY



1. All room dimensions are in metric and measured to structural elements, and exclude wall finishes and construction tolerances. 2. All dimensions have been provided by our consultant architects. 3. All materials, dimensions, drawings, features and amenities, are approximate at the time of printing. 4. Actual area may vary from stated area. 5. Drawings are not to scale E&OE. 6. The developer reserves the right to make revisions to the floor plans and any features, materials, dimensions, drawings, and amenities mentioned on this plan and in the brochure without notice. 7. Unit plans may exist in mirrored version.

Sidr Residences 1 - unit plans

سدر ريزيدنسز
SIDR RESIDENCES



4 BEDROOM
TYPE 1

Net Area starting from:
346.92 sqm / 3734.22 sqft

Balcony Area starting from:
36.19 sqm / 389.55 sqft

Total Area starting from:
383.11 sqm / 4123.76 sqft



1. All room dimensions are in metric and measured to structural elements, and exclude wall finishes and construction tolerances. 2. All dimensions have been provided by our consultant architects. 3. All materials, dimensions, drawings, features and amenities, are approximate at the time of printing. 4. Actual area may vary from stated area. 5. Drawings are not to scale E&OE. 6. The developer reserves the right to make revisions to the floor plans and any features, materials, dimensions, drawings, and amenities mentioned on this plan and in the brochure without notice. 7. Unit plans may exist in mirrored version.

Community features

سدر ريزيدنسز
SIDR RESIDENCES
في مدينة إكسبو دبي
AT EXPO CITY DUBAI



Apartment types:

One- to four-bed units and loft apartments, with options for minor modifications to accommodate accessibility requirements



Larger-than-average apartments:

Floor-to-ceiling windows and spacious balconies



Panoramic terraces:

Stunning views of Al Wasl Plaza, Terra and the UAE Pavilion



Smart living:

Tech-enabled, 5G-connected environments with home automation



Swimming pools:

Adult and kids' pools, splash pad, pool decks, cabanas and spa pools



Clubhouse:

Function rooms, reading rooms, social spaces and meditation pods



Gyms and kids' play areas:

Fitness spaces and nature-inspired play areas for healthy, happy residents



Library pods:

Promote recycling and book-sharing as part of the community's values



Community gardening:

Available at podium level, integrated into landscaped amenities



Kids' toy library:

Encourages recycling, sustainability and sharing



Outdoor dining spaces:

Family-friendly, open-air paved areas, ideal for barbecues and get-togethers



15-minute walkable urban community:

Access to convenience stores, retail and F&B options and key landmarks, with easy connectivity to Dubai Metro

Connectivity highlights

A harmonious environment that balances human needs and environmental stewardship, Sidr Residences offers breathtaking views within a convenient, walkable community

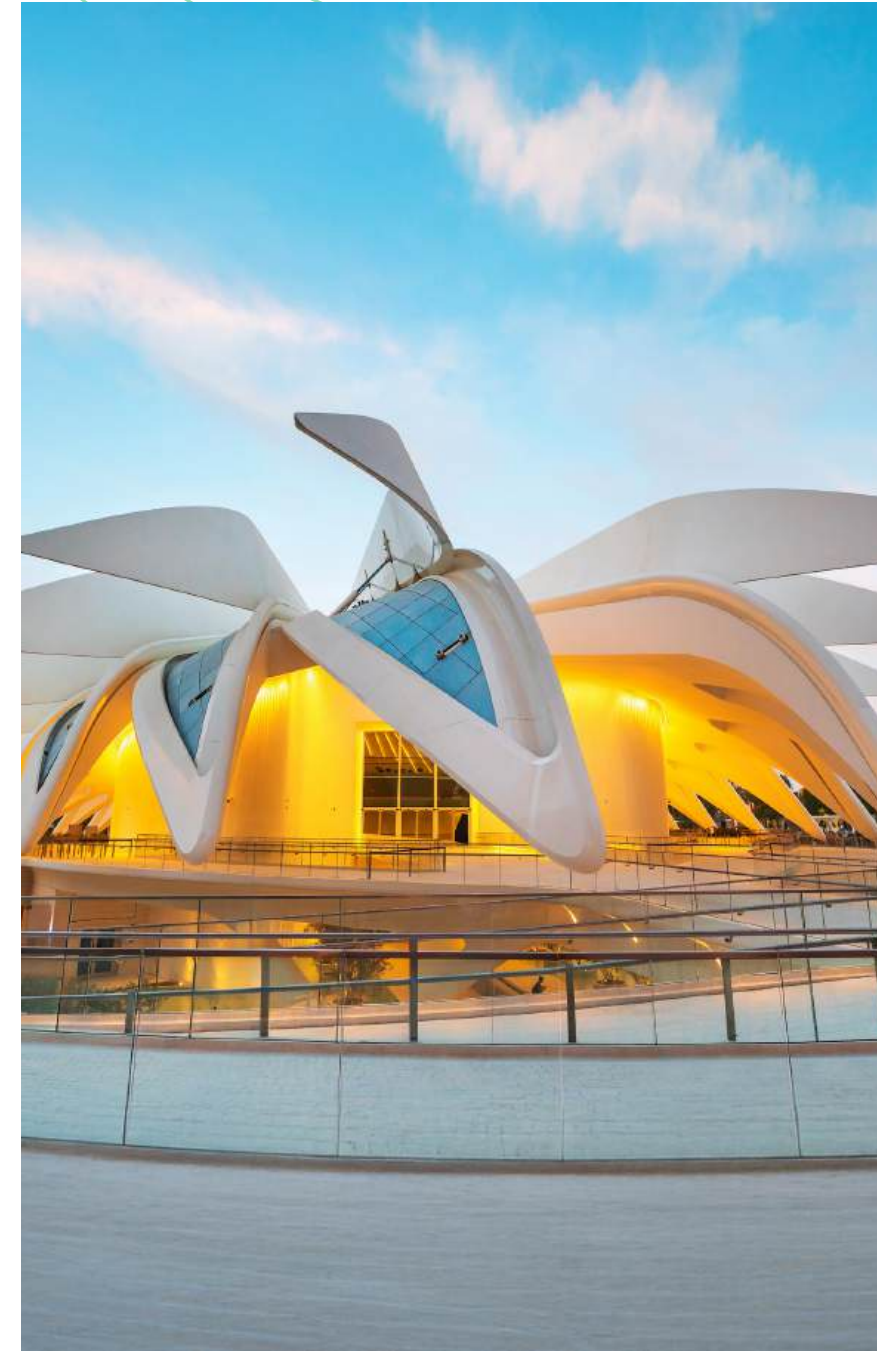
سدر ريزيدنسز
SIDR RESIDENCES
في مدينة إكسبو دبي
AT EXPO CITY DUBAI



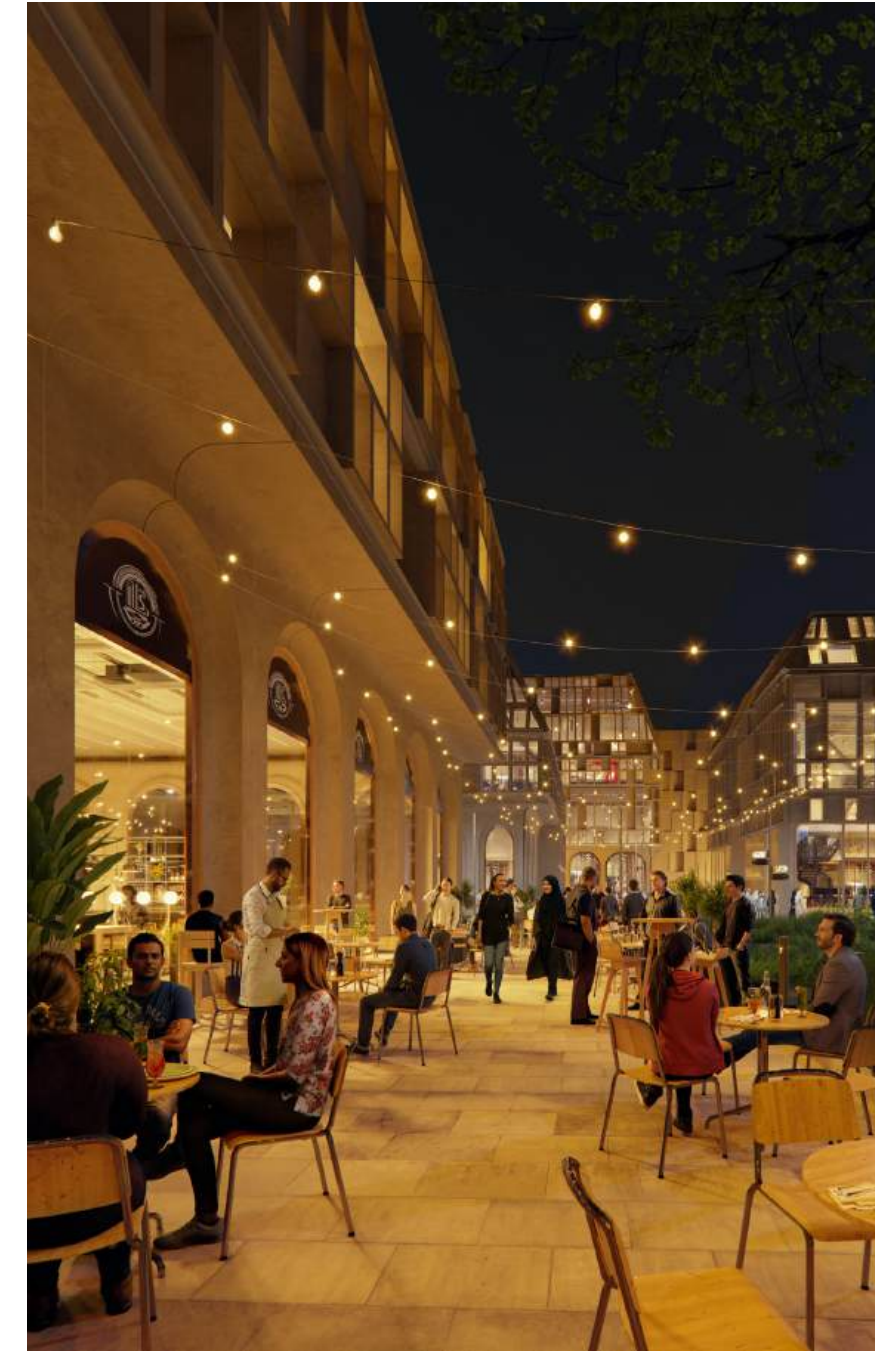
Within easy reach of the community square, offices, theatre, 5-star hotel, the Expo City market and numerous restaurants and retail outlets



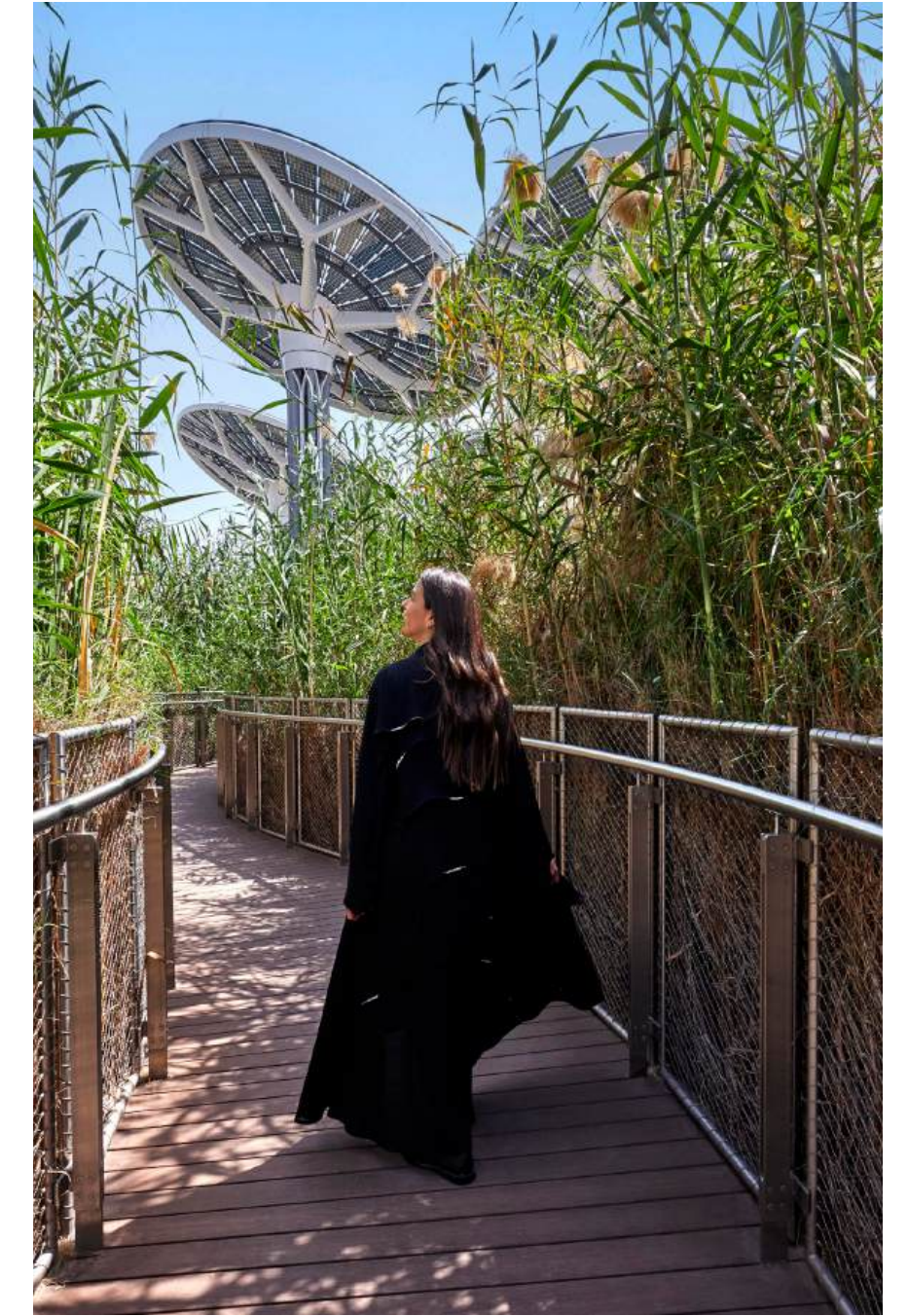
Five minutes from Al Wasl Plaza with its outdoor performances and immersive projections



Direct access to the UAE Pavilion via the lush Ghayath Trail



Bordering Expo Business offering prime connections to high-end professional opportunities as well as extensive dining and retail options



Sweeping outlooks across Al Wasl Plaza, the UAE Pavilion and Terra, with views of Surreal water feature from higher floors