



STERLING

OMNIYAT®



THE STERLING



A PARADISE FOR
CONNOISSEURS OF
THE EXCEPTIONAL

S





Shimmering &
BRILLIANT

LINGERING IN THE GOLDEN GLEAM. LIFE, WHAT IS IT BUT A DREAM?

THE EXPRESSION OF INFINITUDE

The Sterling by Omniyat is a stunning residential project in the heart of Dubai, nestled between the Burj Khalifa District and the amazing Dubai Water Canal.

With a façade featuring a chrome finish, the Sterling's platinum twin towers stand out as the gems of Dubai, mirroring the life of the city and glistening with its lights and stars in the darkness of night.

THE STERLING EXTERIOR DUSK





THE STERLING EXTERIOR DAYTIME

THROUGH THE LOOKING GLASS

Enter a fantastical world of perfection, a wonderland of architectural expression, functional design, sparkling beauty and endless possibilities.

Look within and experience the illustriousness that is Omniyat's guarantee. From the minute to the grand, each detail is carefully designed and selected to impress and dazzle the discerning perfectionist in you.

Look beyond and behold the most amazing city at your fingertips, the city of wonders, radiance, glamour and extravagant sophistication.



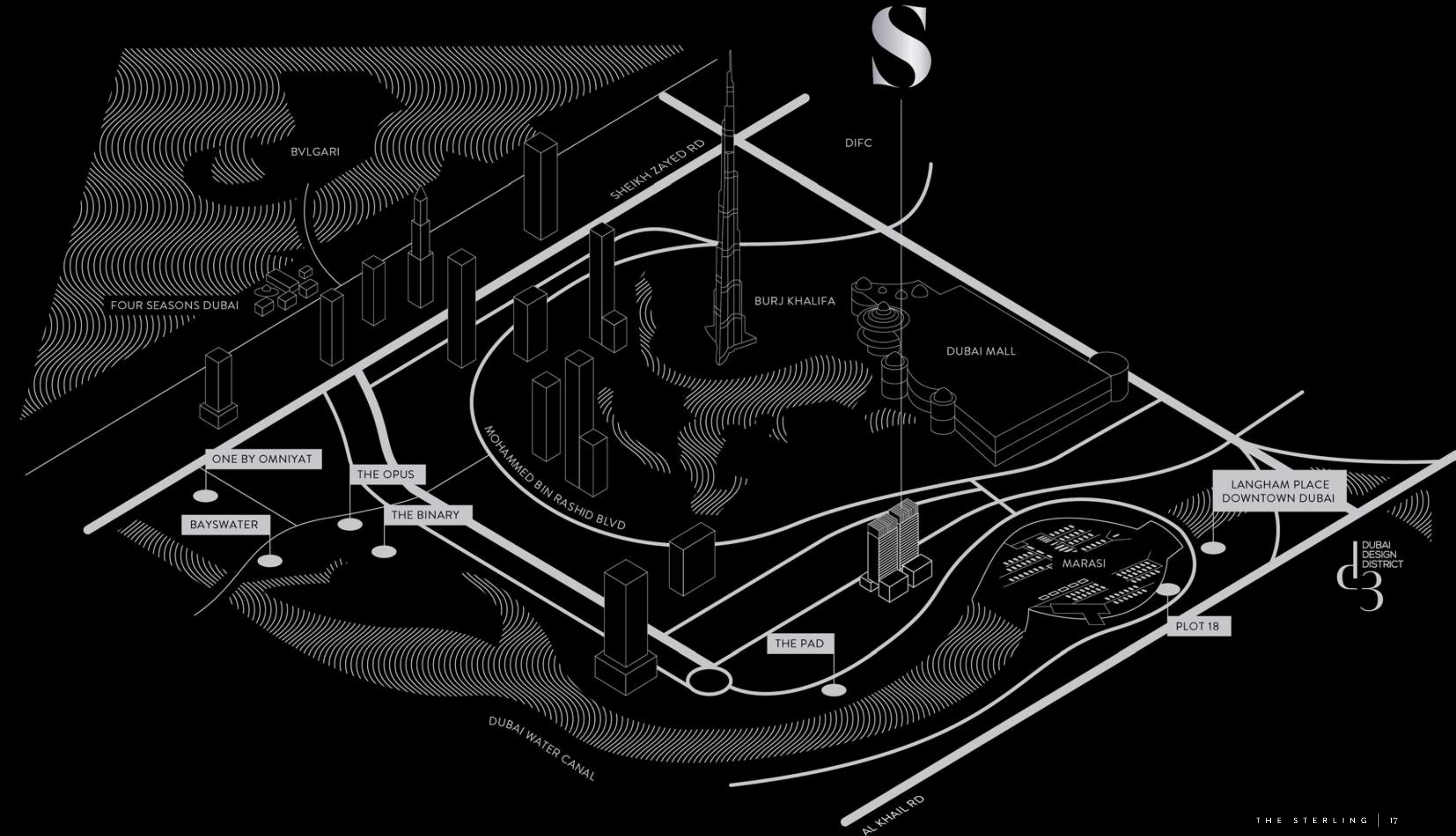
The centre of **EVERYTHING**

DUBAI HAS BECOME ONE OF THE MOST PROGRESSIVE AND IMPRESSIVE GLOBAL CITIES. IT'S WHERE BUSINESS, LUXURY SHOPPING AND AMAZING ARCHITECTURE CONVERGE WITH A MYRIAD OF CULTURES AND A BUOYANT NIGHT-LIFE.



The Sterling LOCATION

THE STERLING OFFERS THE MOST MOMENTOUS DESIGN AND LIFESTYLE EXPRESSIONS OF THE CITY. IT'S PERFECTLY LOCATED IN THE HEART OF BURJ KHALIFA DISTRICT, AT THE DAZZLING DUBAI WATER CANAL, AND ADJACENT TO BUSTLING DOWNTOWN DUBAI.



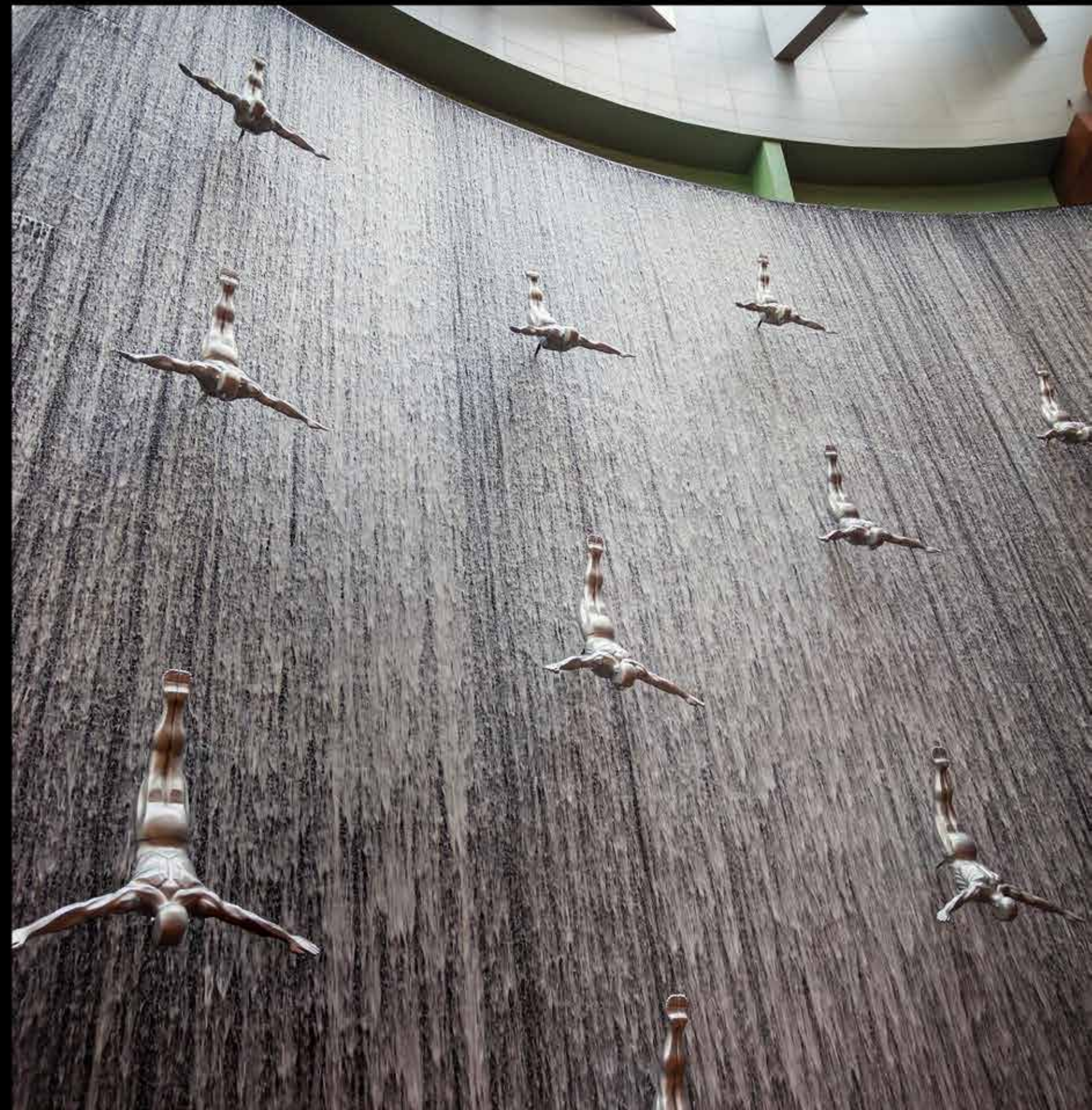


FASHION CAPITAL AND ENTERTAINMENT CENTRAL

Just across the street from The Sterling is the world's largest shopping centre, the Dubai Mall, with more than 1,200 shops, over 80 of the most coveted luxury brands and a myriad of restaurants and cafes. The number of visitors per year exceeds 80 million.

The Sterling is superbly located close to the world's most visited boulevard, the Sheikh Mohammed Bin Rashid Boulevard, curving through the heart of Downtown Dubai. It circles the world's tallest building with the highest outdoor observation deck, the Burj Khalifa with its lake, park and the world famous Dubai fountain. The exotic promenade is lined with chic restaurants and cafes, adorned with works of art and hosts spectacular events and extravaganzas.

Within the most prestigious square kilometer in the world is the Dubai Opera, a radiant centre that brings culture, art and music to life, as well as a plethora of brilliant luxury hotels, like The Palace and Armani Hotel, offering the finest dining experiences, celebrity-style nightlife and endless entertainment options in a magical setting.





FASHION

**FASHION IS ART, YOU ARE
THE CANVAS, AND DUBAI IS
YOUR STUDIO**

HIGH END RETAIL



**STYLE IS A STATEMENT,
AND SHOPPING IS AN
ART FORM.**

When you're at The Sterling, you're a part of the members-only club where you can express and perfect your style and shopping skills every day.

The Sterling's location, in between Chanel and Hermes, right next to Cartier and Bvlgari, just around the corner from Louboutin, La Perla and Prada, a step from Vuitton and Ferrari, is essential for indulging in the platinum Dubai lifestyle where shopping is a way of life.

The choices are infinite and always within your reach in the city that has become the global fashion capital. Here Fashion Week lasts all year long.



DELICIOUS MARVELS FROM AROUND THE WORLD AND DRAMATIC NIGHTLIFE.

Your choices are limitless, as are the culinary styles, delicacies and breath-taking settings, such as the world's highest restaurant, the At.mosphere, at the pinnacle not only of the legendary Burj Khalifa but also of gourmet indulgence, ultra sophisticated nightlife enjoyment and celebrity VIP events.

In the neighboring Dubai International Financial Centre you can sample innovative gastronomy at Zuma, culinary art Italian-style at the prestigious Roberto's or go for a French flavour explosion at La Petite Maison.

After you've indulged your inner gourmand, head out for some awe-inspiring cosmopolitan nightlife that is Dubai's signature style.



FOOD

**NO PLACE FOR
BOREDOM AND ROUTINE
IN THIS CITY**

CULINARY DELIGHTS





CANAL

HAPPINESS IS A JOURNEY...
THE JOURNEY IS THE
DESTINATION

WATERFRONT LIFESTYLE



EVERY DAY IS SPECIAL WHEN YOUR HOME IS ON THE WATER CANAL

Dubai's stunning yacht club and parkland development link Business Bay with the Arabian Gulf. The possibilities are endless... as is your freedom to explore all the wonders that life brings you.

A marvel to delve into is the Marasi Business Bay, a new waterfront development, designed around entertainment and leisure experiences, which embraces the longest promenade in the Emirates, spanning 12 kilometers, unique water homes, floating restaurants, luxury retail options and five splendid marinas with 1,250 berths.



Exquisite LIVING


THE MEMBERS-ONLY RESIDENTIAL
DEVELOPMENT. THE STERLING MIRRORS
THE DETERMINED PERSONALITY, THE
DIGNIFIED SUCCESS AND THE REACH-FOR-
THE-STARS ATTITUDE OF ITS RESIDENTS.





You've ARRIVED

TAKE PRIDE IN HOW FAR YOU'VE COME AND HAVE FAITH IN HOW FAR YOU CAN GO. THE STERLING EMBODIES THE SUPERSTAR SPIRIT OF DUBAI, THE CITY WHERE EVERYTHING IS POSSIBLE, WHERE FANTASY BECOMES REALITY.





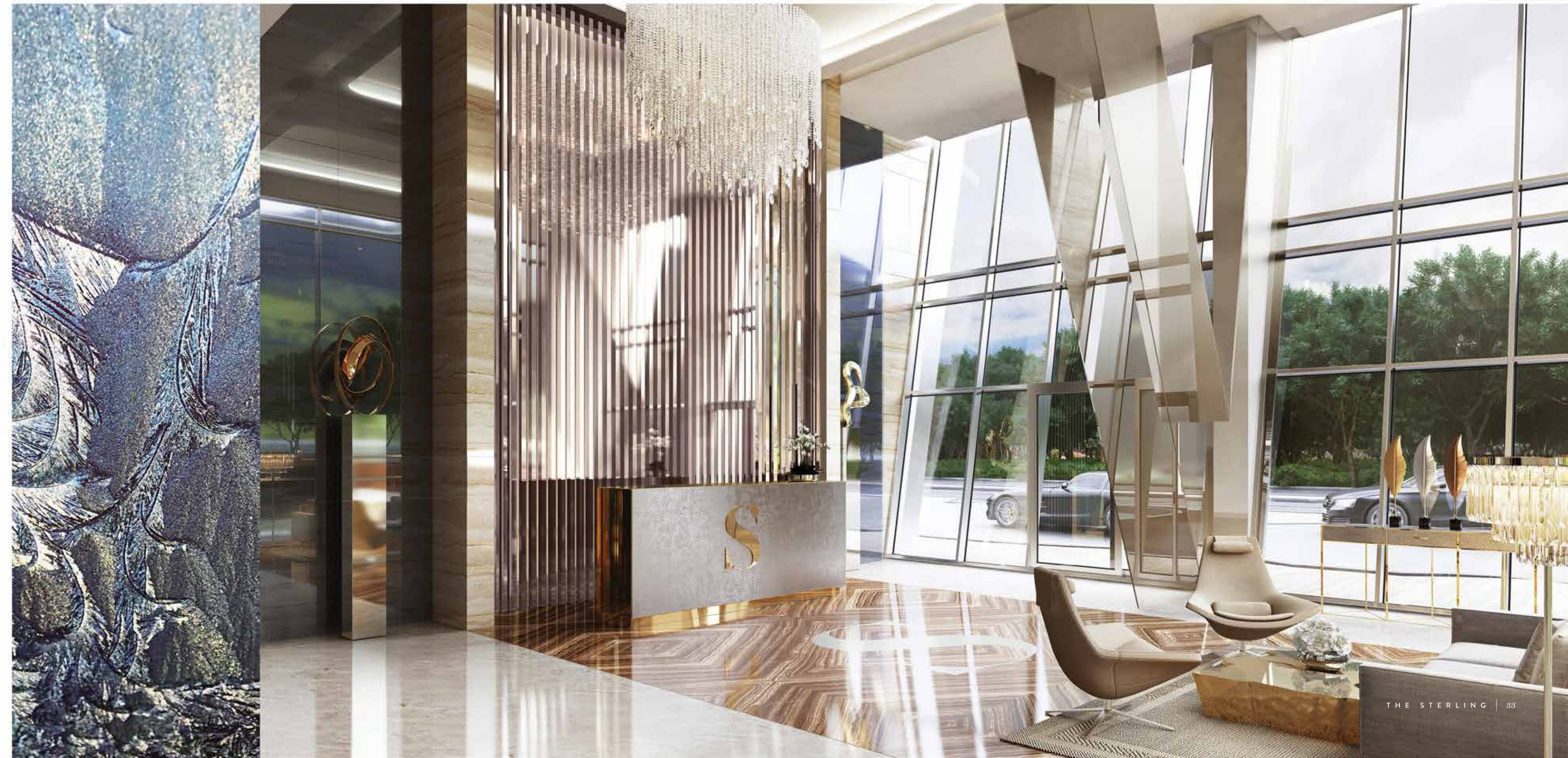
PERMANENT RED CARPET ARRIVAL

We roll out the red carpet for you, every day and night. Because coming home to The Sterling is always a memorable affair, a delightful reprieve from the clamor and tumult of the world. The landscaped arrival, the valet parking and 24-hour security are just a small part of your exclusive Sterling membership and special welcome-home reception.



THE DIFFERENCE BETWEEN ORDINARY AND EXTRA-ORDINARY IS JUST THAT LITTE “EXTRA”.

Our special effort will make a great first impression and an indelible effect. Designer furniture, natural light and rich material welcome you to your splendid home. Controlled access and concierge service means you never have to worry about anything and everything is possible.





Spellbinding DESIGN

CREATE THE IDEAL RESIDENCE. THIS IS WHERE EMBLEMATIC
INTERIOR DESIGN AND THE FINEST MATERIALS MEET
CAPACIOUS ROOMS AND MODERN TECHNOLOGY.





ELEGANCE IS BEAUTY THAT NEVER FADES

At The Sterling you can expect only perfection ... always.
All aspects of this landmark development exude the grandeur that is Omniyat's guarantee. From minute to mighty, each detail reflects amaranthine beauty, sophisticated elegance and the refined style of its residents.





DESIGNED AROUND THE THINGS THAT MATTER... FOOD, FUN, LIFE

Functional design combines with superb material to create the perfect environment for you to indulge all your nourishment, aesthetic and celebration needs.

Whether it's preparing a delectable meal, sampling delicacies from around the world with your loved ones, hosting a glamorous dinner or just enjoying your morning coffee in peace, this part of your home is designed for delicious home-made happiness.



THE STERLING OPEN KITCHEN





THE LAND OF REVERIE

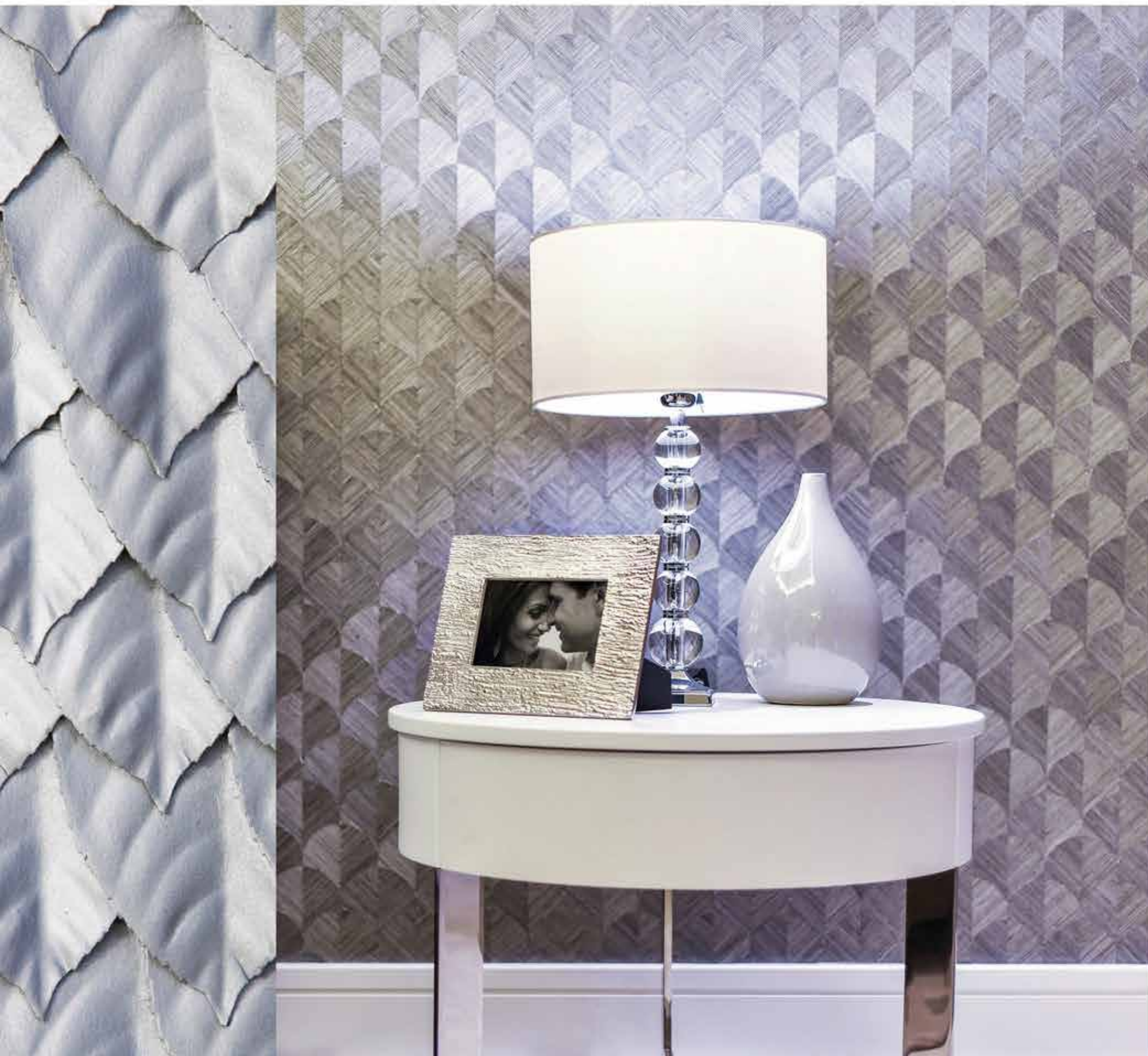
Disconnect from the world outside and enter an opulent sanctuary, with plush beds, his and hers spot lit walk-in wardrobes and dreamy views.

The luxuriant design of The Sterling's bedroom creates an oasis for your reverie and the perfect repose ambiance. It will lull you gently to sleep with the lights of Dubai gleaming through the windows and provide serenity when the sun rises on the horizon above the shimmering waters of Dubai Water Canal.



WALK - IN HIS AND HER CLOSETS

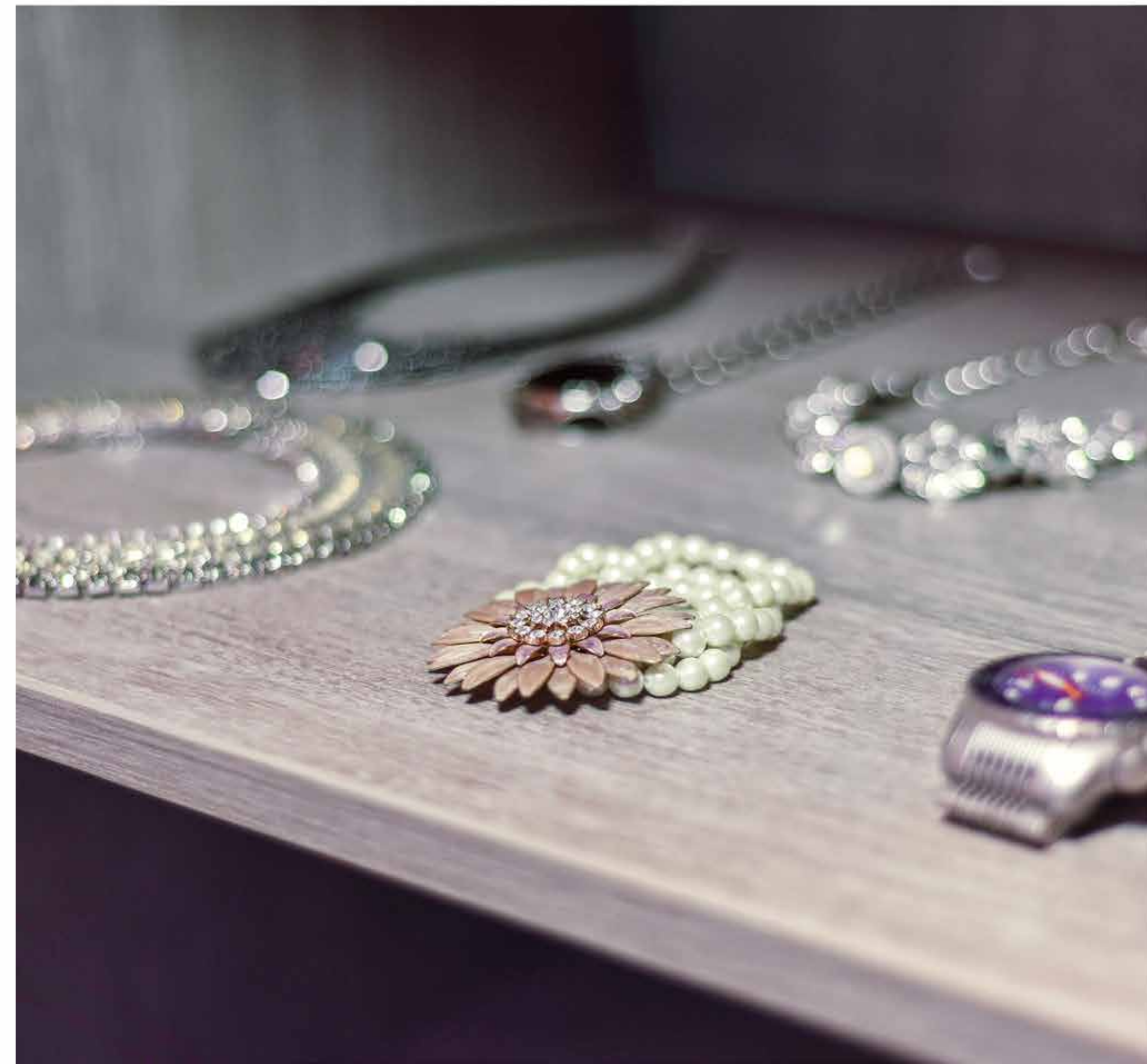




SIMPLICITY IS THE KEY TO ELEGANCE

Elegance is always in style at The Sterling, where each detail is carefully chosen to dazzle the demanding aesthete's luxuriant lifestyle.

Salon lighting, carefully chosen patterns and colors, singular elements and details of refinement in each residence reflect The Sterling's timeless elegance and spellbinding design.



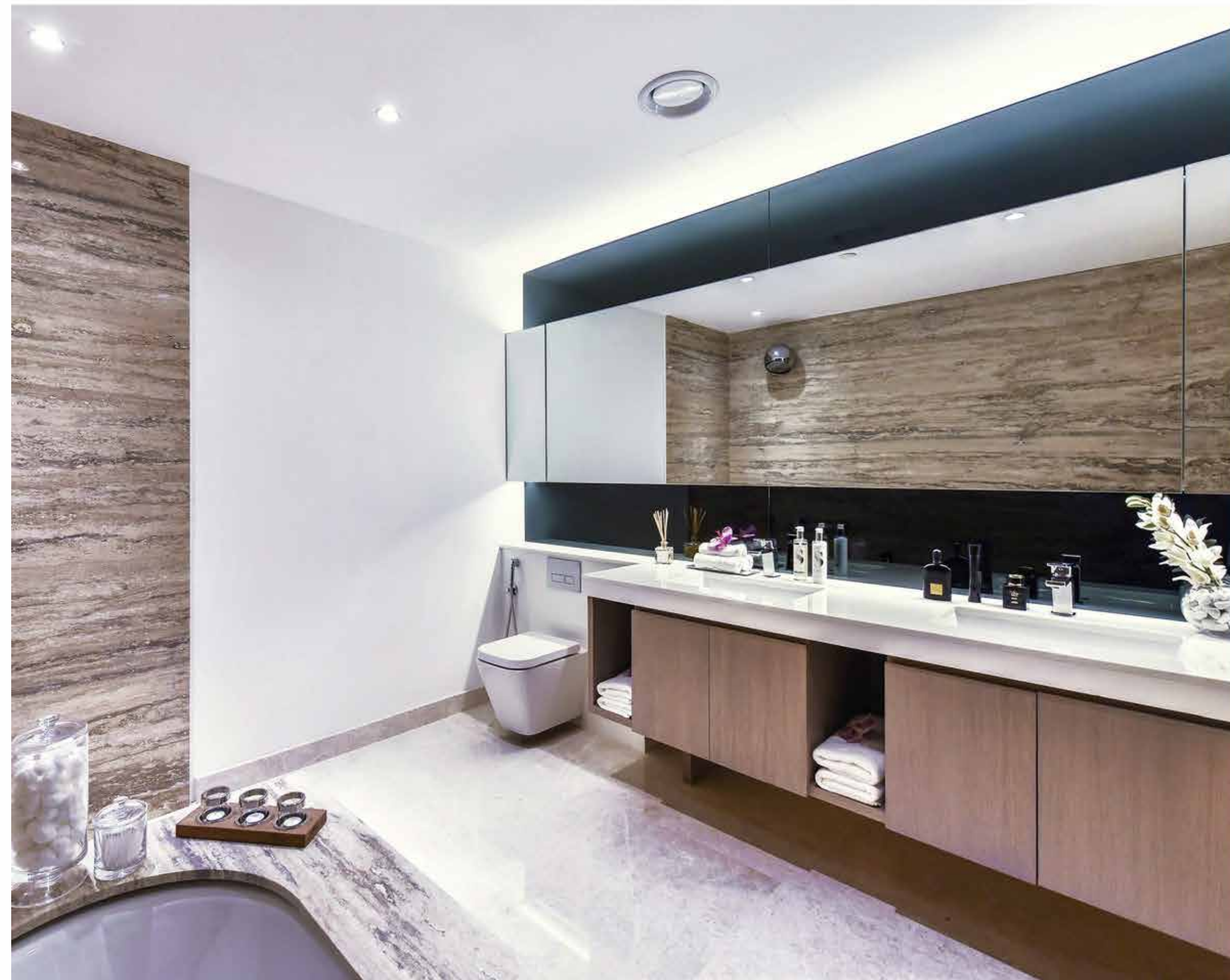


RELAX, IT DOESN'T GET MUCH BETTER THAN THIS

Lush materials, intelligent components and a healthy dose of ostentatious ingredients combine to create a blissful climate to unwind, rejuvenate and refresh yourself in the utmost comfort and peace of mind.

Ameliorate your physical and spiritual dimensions through daily rituals in a clean, clear and pure environment that will wash the world away, pamper your body and relax your mind.

SPACIOUS BATH AND SHOWER



YOU ARE EXACTLY WHERE YOU'RE SUPPOSED TO BE

The palatial penthouses exude high-altitude attitude, and include four luxuriant bedrooms, double height living room ceilings, grandiose ornate terraces and thrilling views of the Burj Khalifa, the Dubai Mall, Dubai Water Canal and the Marasi Business Bay.

From up here you can contemplate the radiance of Dubai, survey the sumptuousness around you and enjoy the fruit of your success.

PENTHOUSE DINING AREA





EMINENCE AND DISTINCTION

Relax like royalty or entertain with majesty in the formidable living room, with sky-high ceilings, full measure glass doors and windows, affording you and your guests a sensational view over the enchanting Dubai Canal.

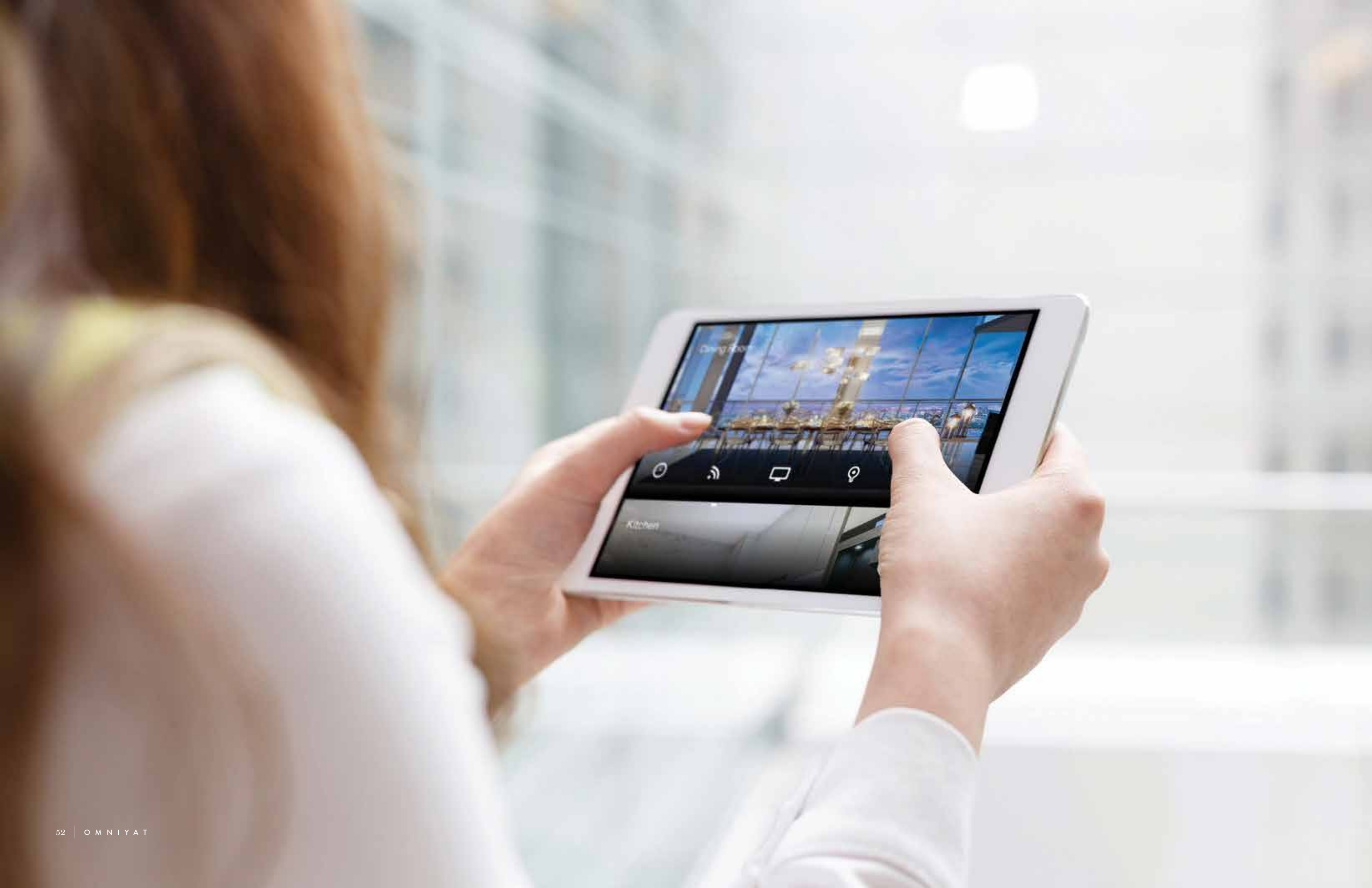


STIRRING AND MAGNIFICENT

The sprawling city of Dubai spreads beneath the penthouse balcony, so you can joyously celebrate the morning sun rising, from this top-of-the-world spot or enjoy the golden hour at dusk while sipping an ambrosial cocktail in your private ultra-refined rooftop lounge.

PENTHOUSE LIVING ROOM





GOVERN WITH A LIGHT TOUCH

Home automation involves control and automation of lighting, ventilation, air-conditioning, curtains, appliances, security and technology.

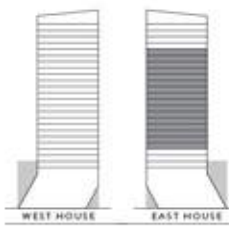
Your stylish residence at The Sterling comes equipped with cutting-edge sensors and switches connected to an intelligent and intuitive central hub that allows you to control all aspects of your environment, at all times, with a few touches and swipes.



S M A R T H O M E A U T O M A T I O N

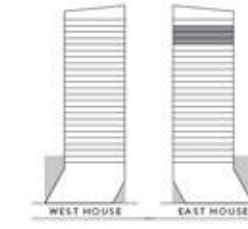


Levels LAYOUT



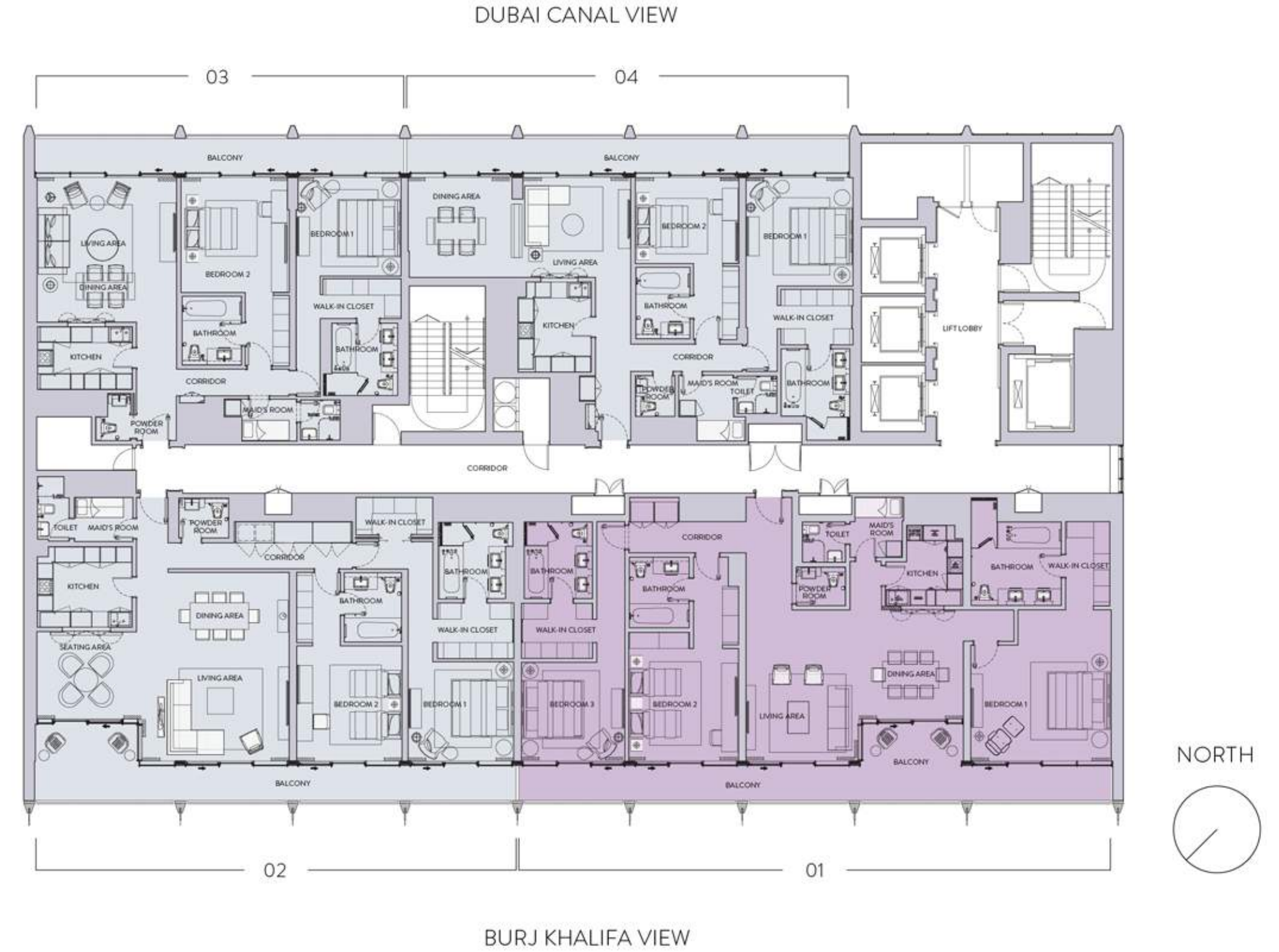
- STUDIO
- 1 BEDROOM
- 2 BEDROOM
- 3 BEDROOM

EAST HOUSE LEVELS 5-20

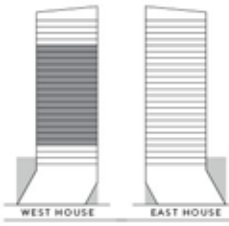


- STUDIO
- 1 BEDROOM
- 2 BEDROOM
- 3 BEDROOM

EAST HOUSE LEVELS 21-23



**WEST HOUSE
LEVELS 5-20**



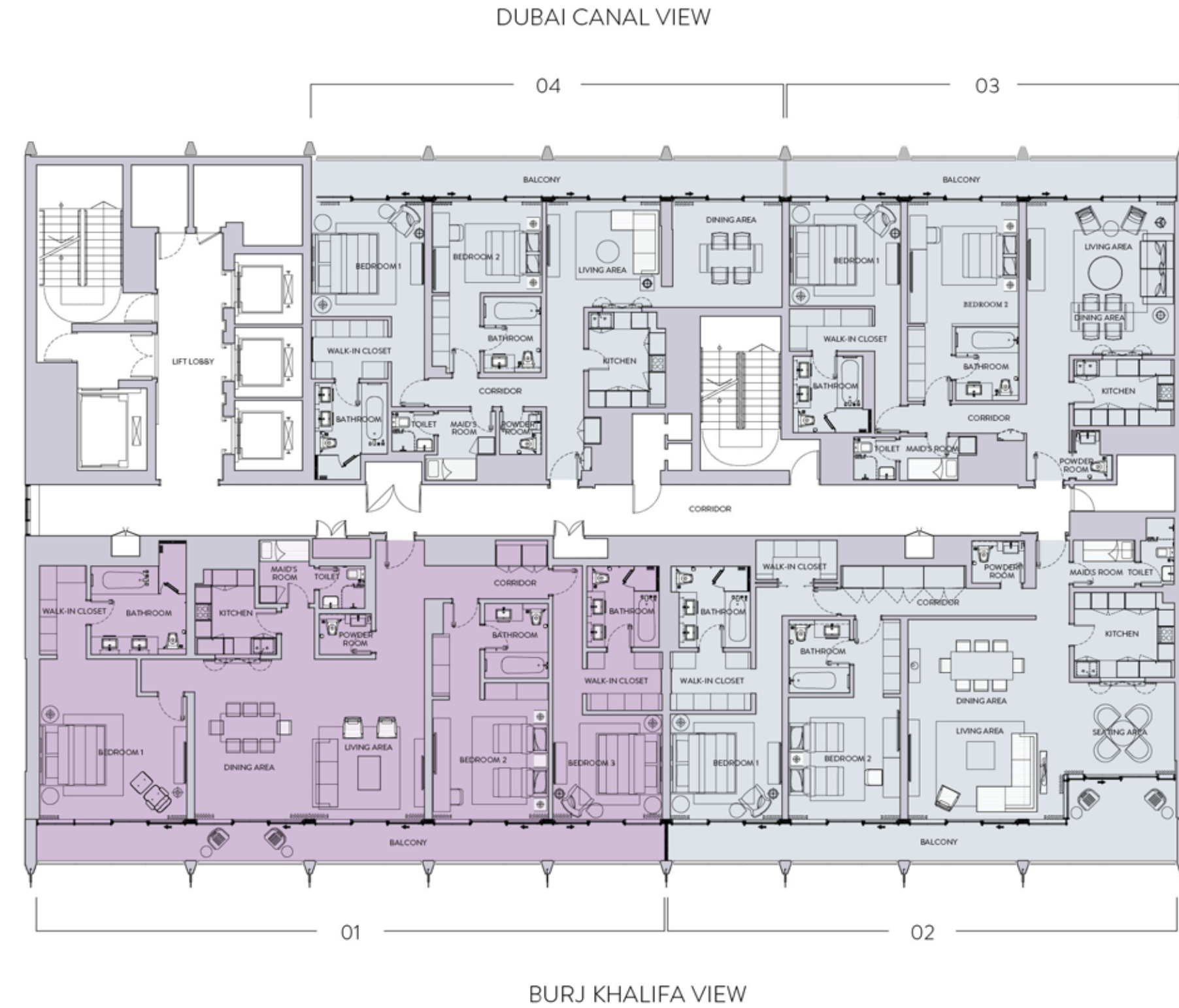
- STUDIO
- 1 BEDROOM
- 2 BEDROOM
- 3 BEDROOM



**WEST HOUSE
LEVELS 21-23**

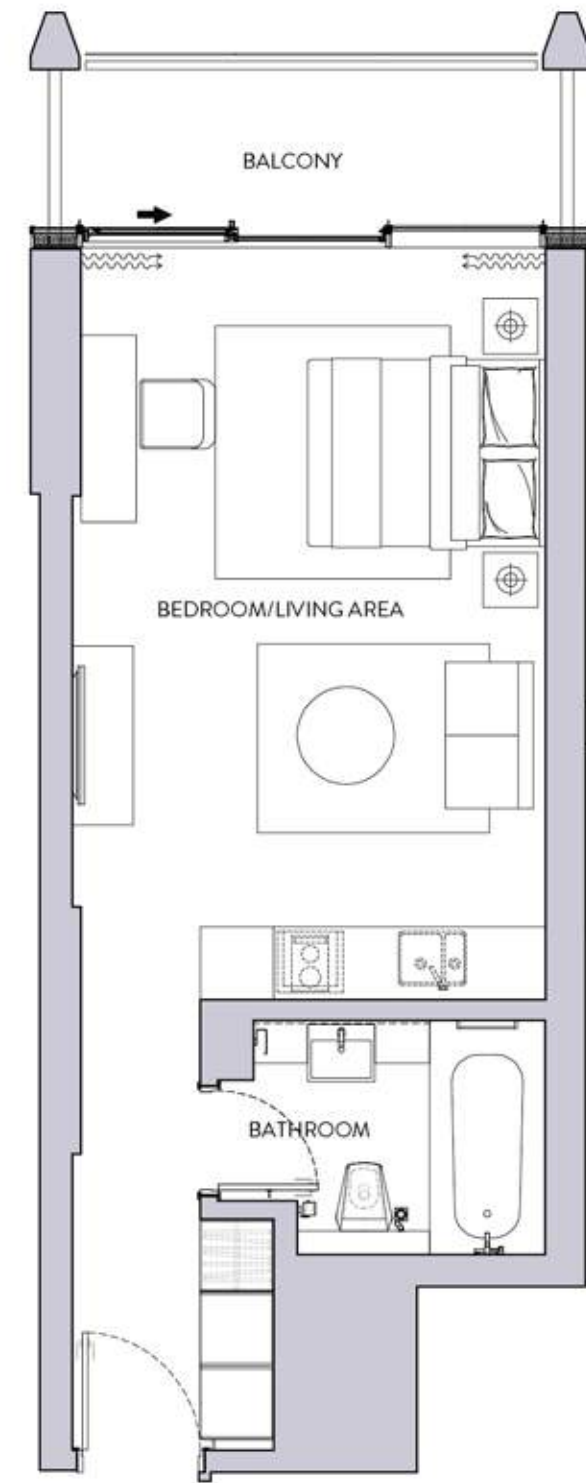


- STUDIO
- 1 BEDROOM
- 2 BEDROOM
- 3 BEDROOM

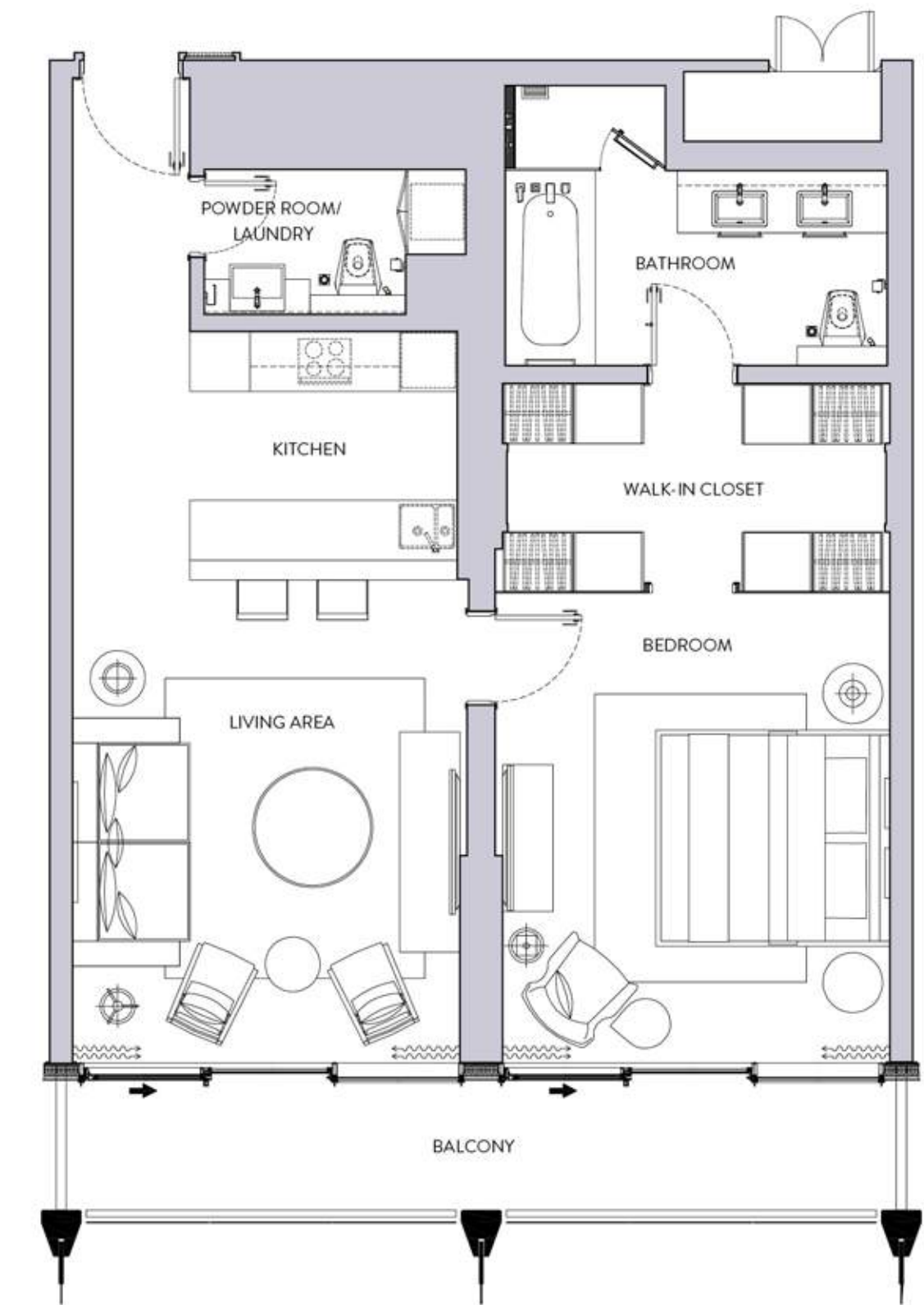


Residences LAYOUT

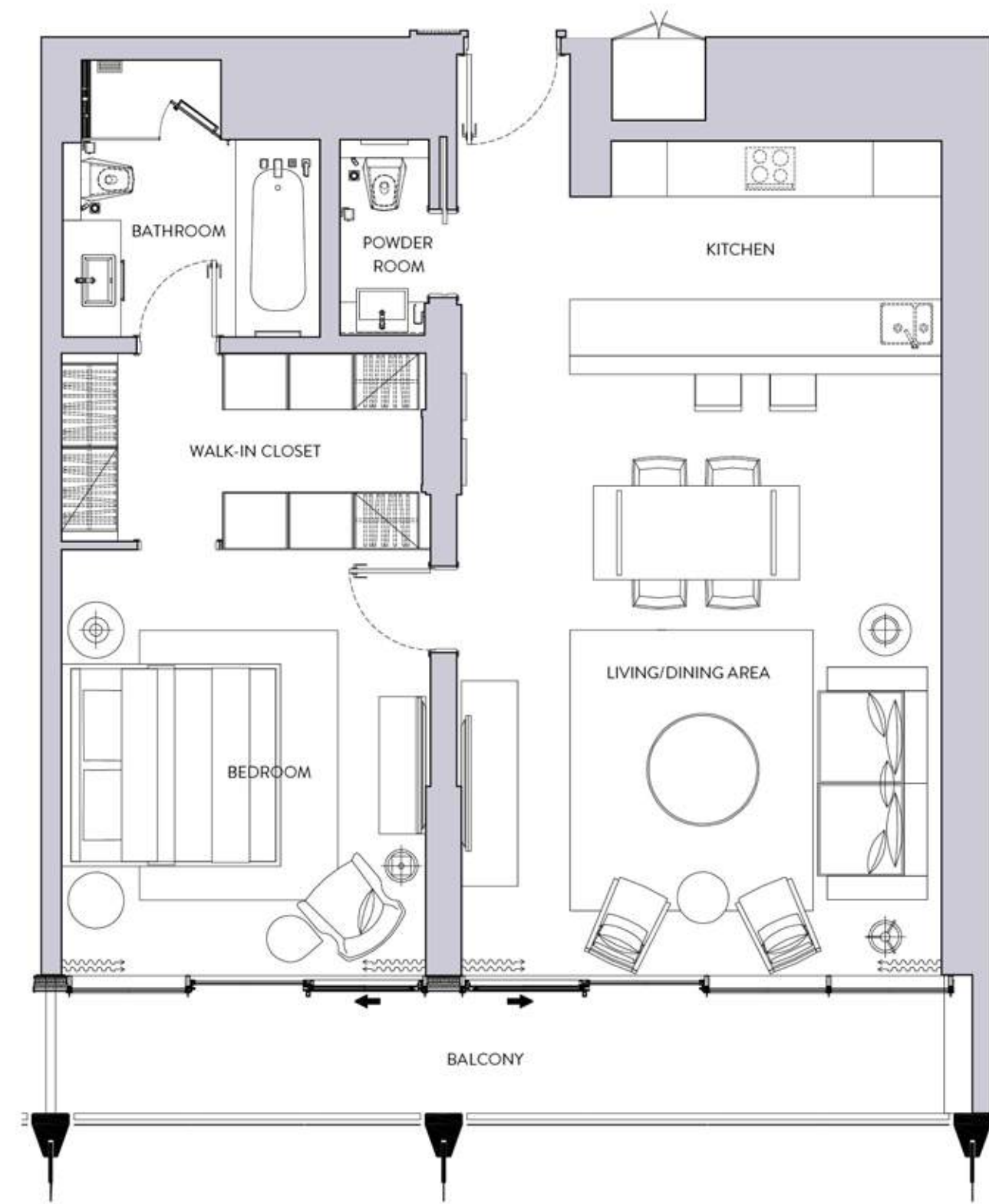
STUDIO



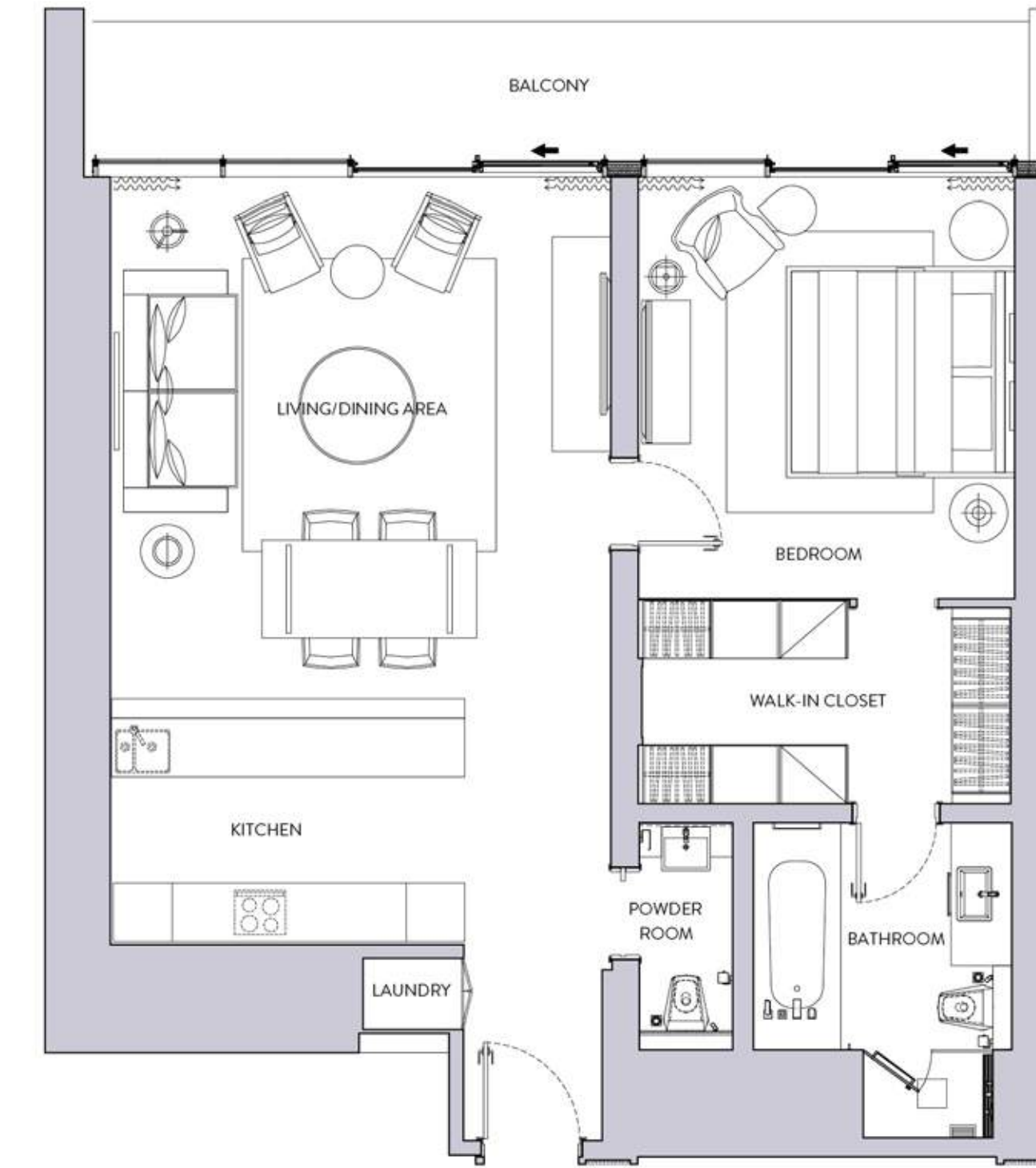
ONE BEDROOM
TYPE - A



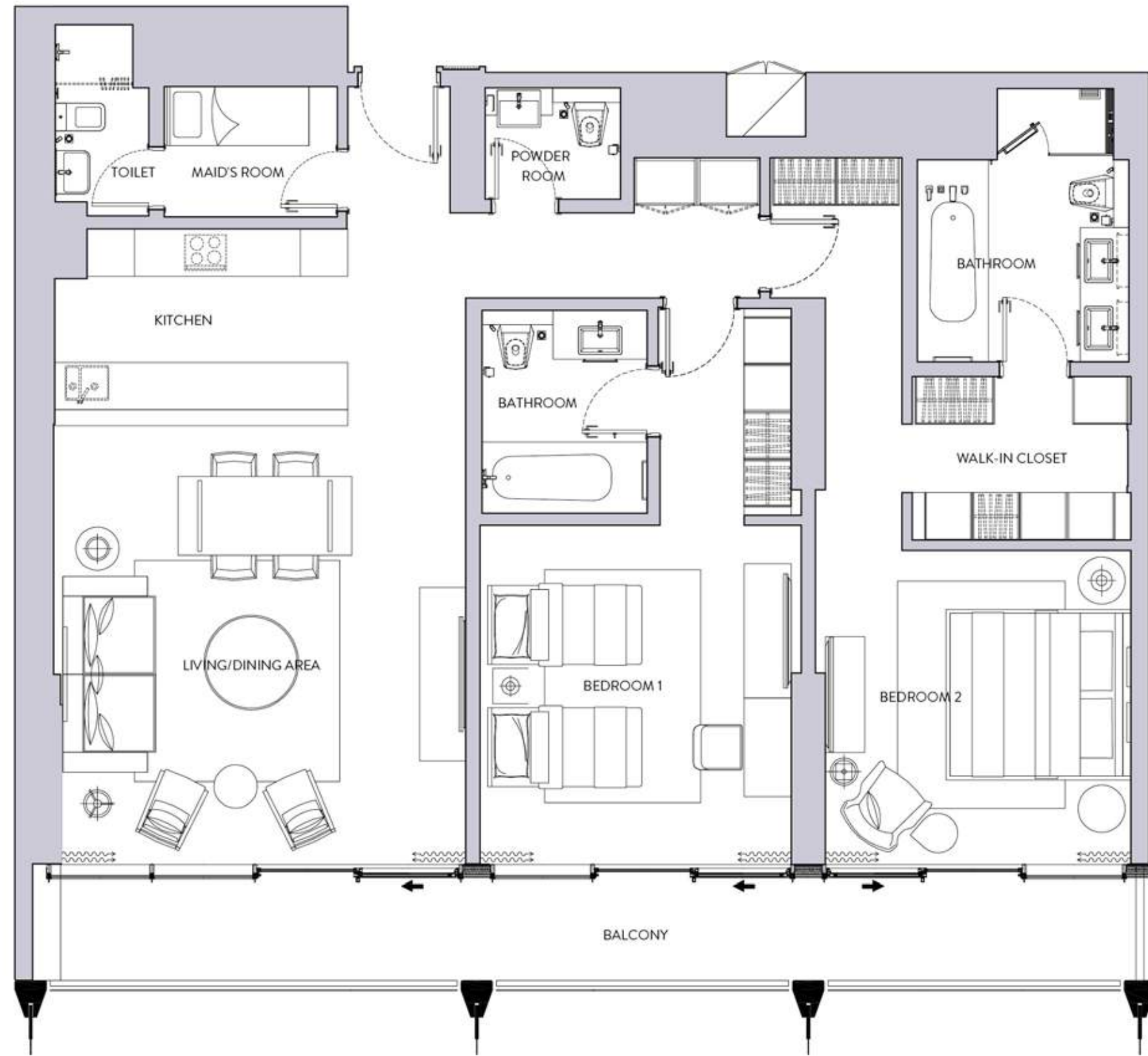
ONE BEDROOM
TYPE – B1



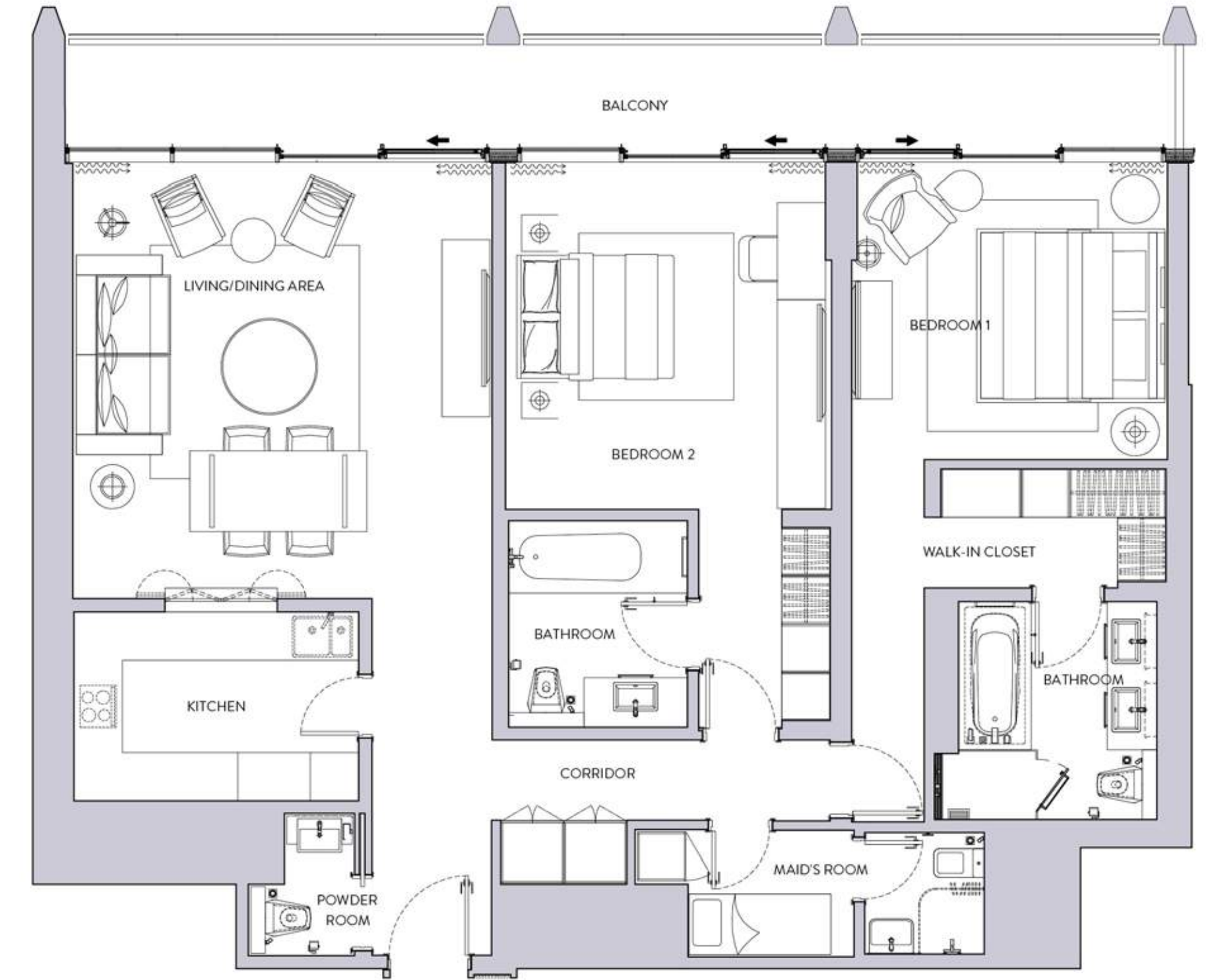
ONE BEDROOM
TYPE – B2



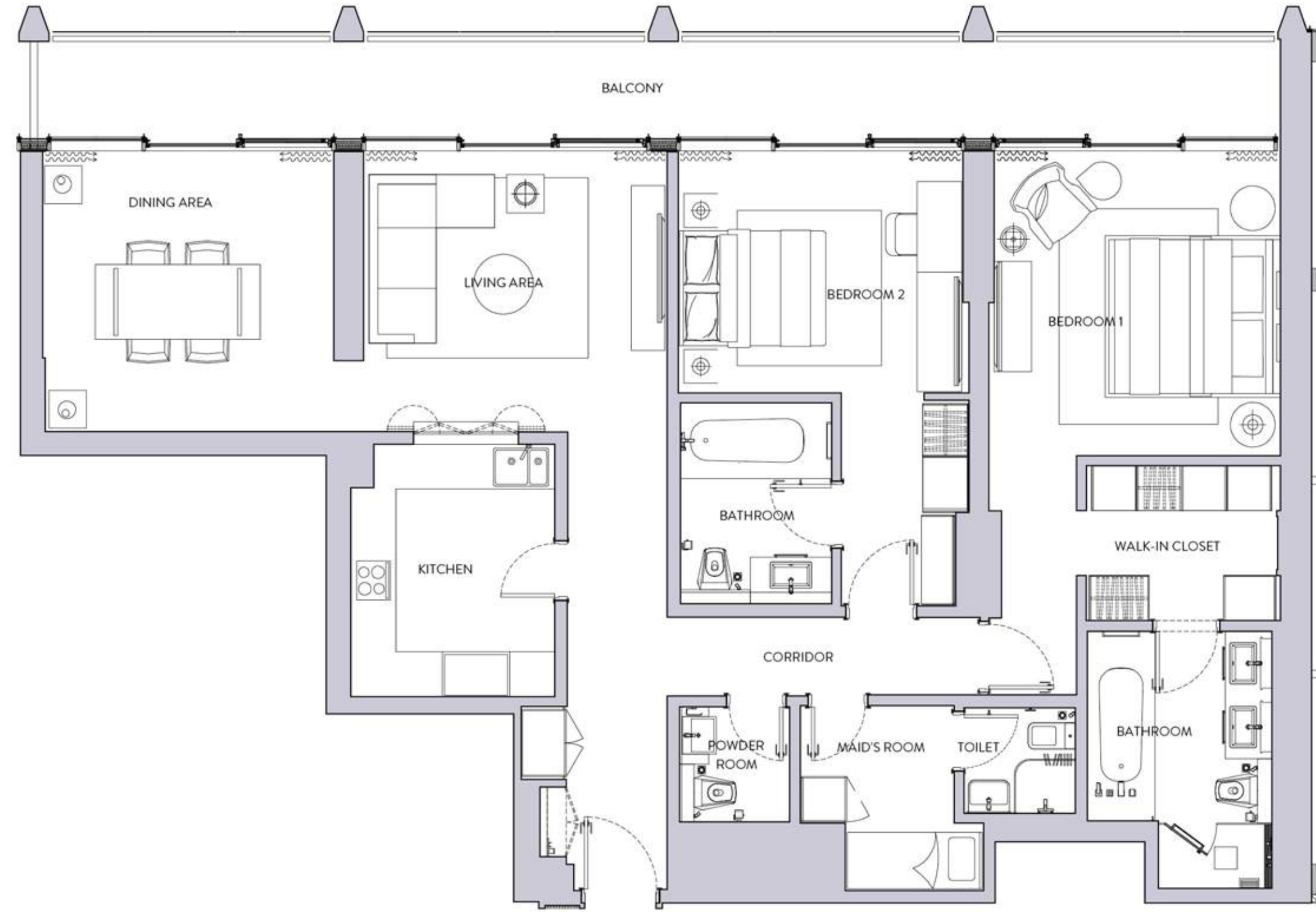
TWO BEDROOM
TYPE – A1



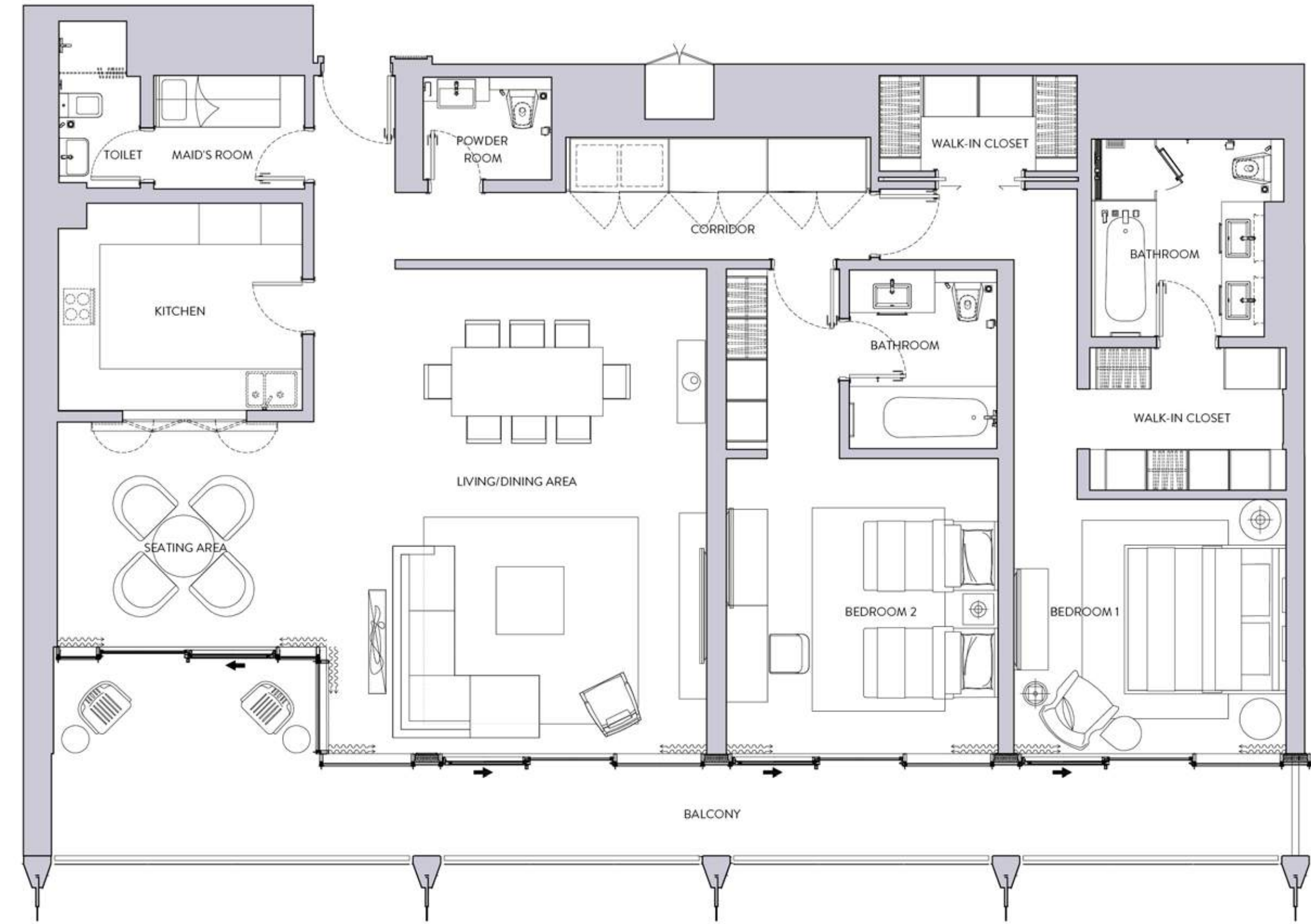
TWO BEDROOM
TYPE – A2

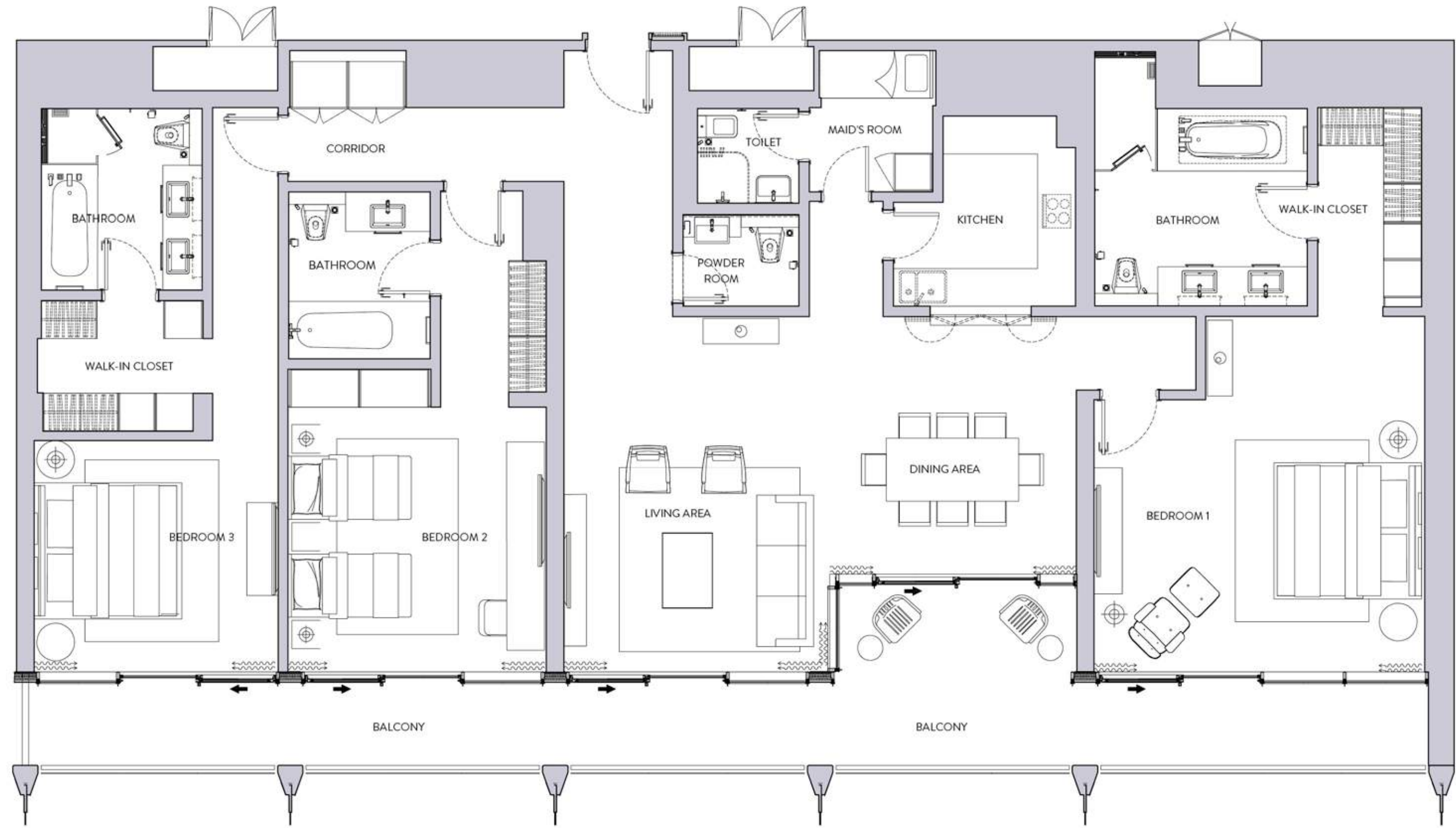


TWO BEDROOM
TYPE – B

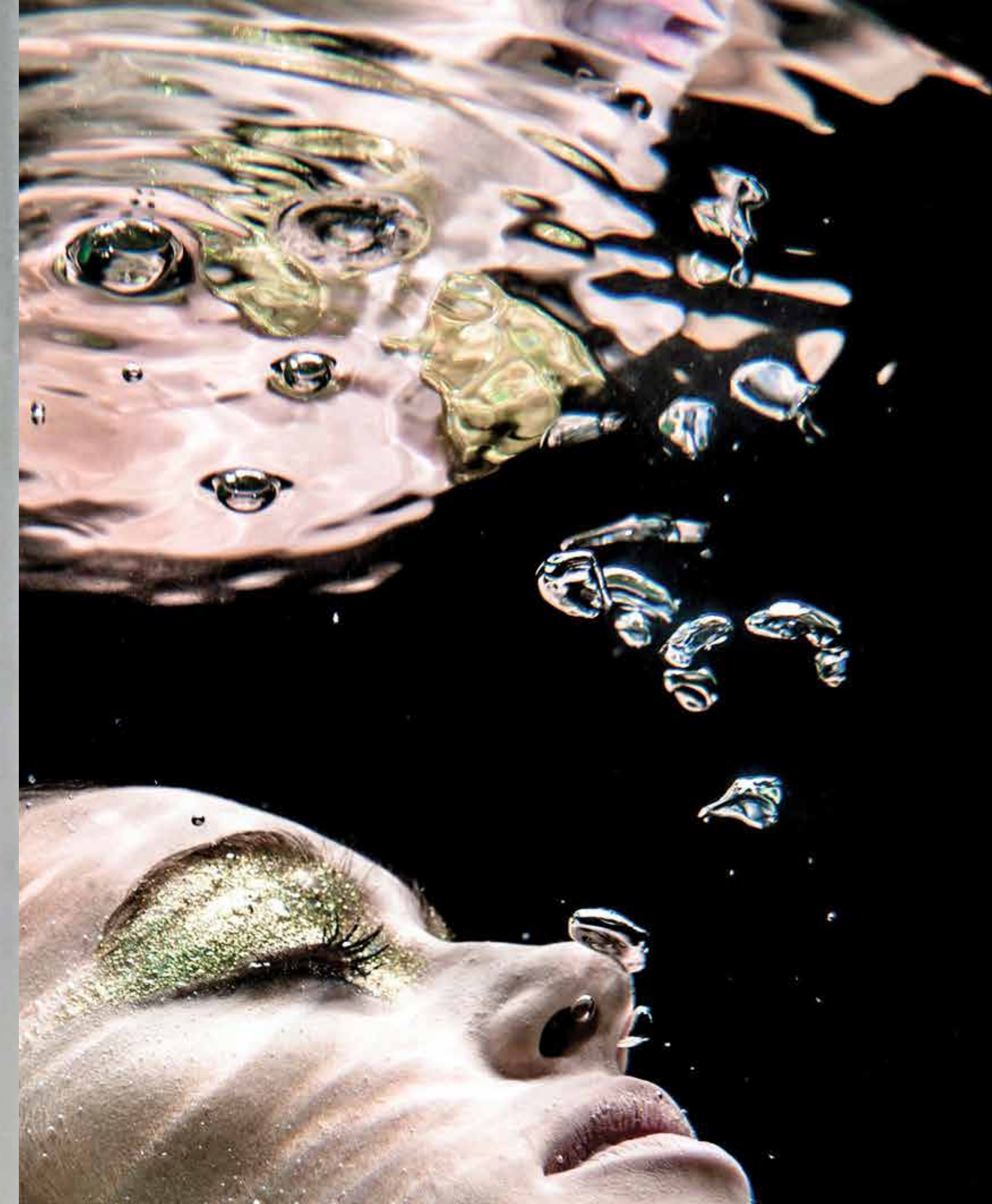


TWO BEDROOM
TYPE – C





THREE BEDROOM



A-list
AMENITIES

WHEN LUXURIES BECOME NECESSITIES. THE STERLING PROVIDES THE ESSENTIALS OF HAPPINESS COMFORTS THAT COSSET, NOURISH AND ENRICH.

POOLSIDE PARADISE

What do you need to be on cloud nine?

Whether it's cooling off in ultra-marine waters, reveling with family and good friends, cocktails in hand, swaying to the music or meditating alongside shimmering waves and setting desert sun, The Sterling's two beguiling lagoons are the perfect scene.

Each of The Sterling's towers has its own pool platform, with everything you need to feel heavenly. Enjoy spacious cabanas, limpid waters, impeccable service, relaxing music and a stunning Dubai belvedere.

LUXURIOUS SWIMMING POOL





SERENITY NOW

Grab your swimsuit and favorite book, the only company you need to lounge around in the exquisite cabanas.

Bask in the glorious Dubai sun and swim your way to a zen state of mind in glistening, translucent, refreshing waters.

Enjoy the platinum things in life while watching the sun go down over swaying palm trees and The Sterling's reflecting façade.



POOL LOUNGE EVENING



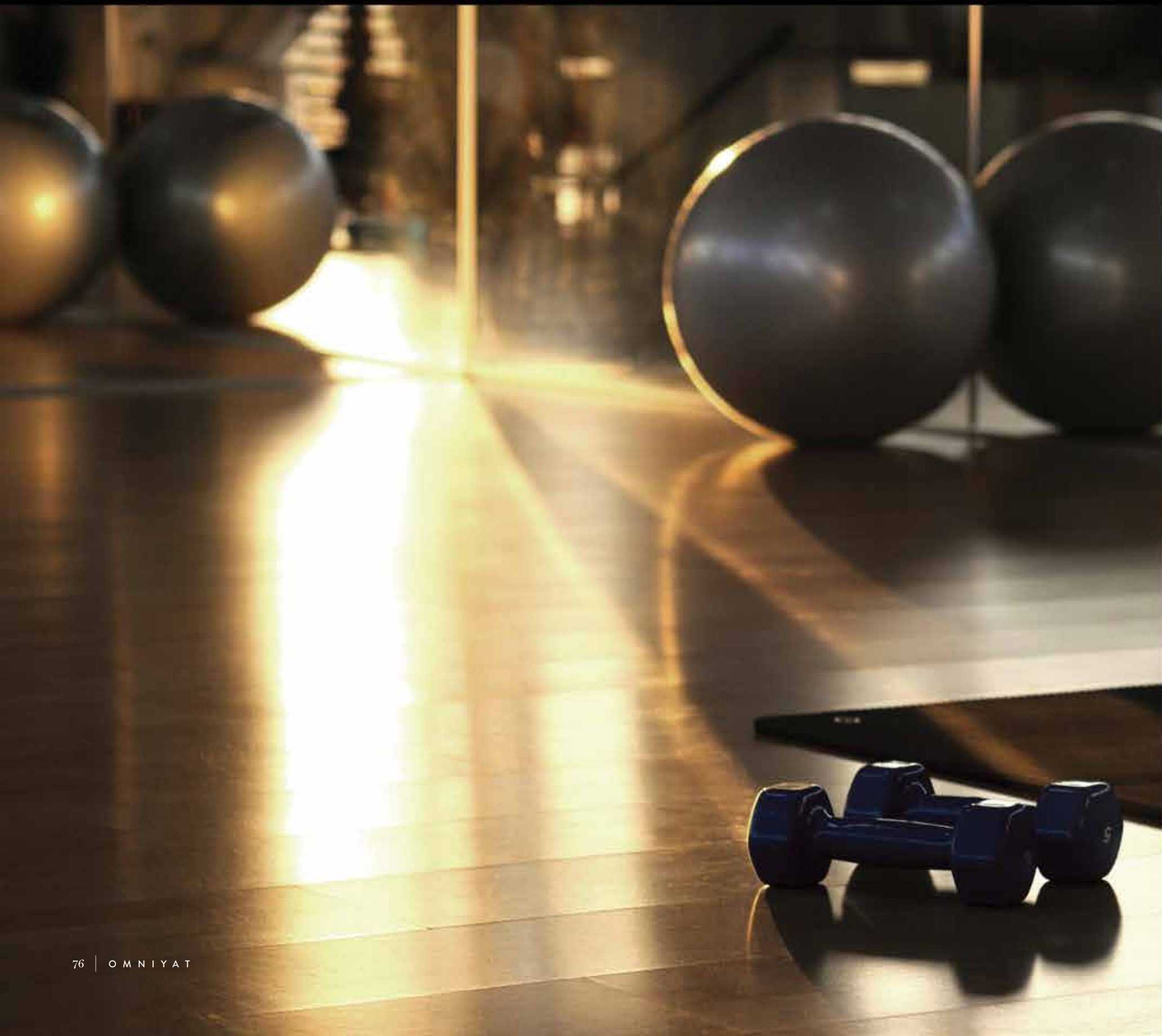


CHERISH YOURSELF

Lay the groundwork for happiness and maintain your most priceless possession in The Sterling's luxurious wellness centre.

We provide everything you can think of to restore your balance, nourish your body and feed your soul, in a setting that contextualize peace of mind, tranquility and services that guarantee phenomenal pampering.





IF IT DOESN'T CHALLENGE YOU, IT WON'T CHANGE YOU

Build your strength and stamina, sharpen your focus and challenge your limits in the gym accoutered with state-of-the-art equipment, persistent personal trainers that help you stay inspired and an ambiance that injects adrenaline, drive and vigor.

Whether you favor the dynamics of cardio training, the arduousness of weight-lifting, the elasticity that comes with floor exercises, the core building of pilates or the benefits of yoga practice, The Sterling's gym caters to each and every preference.



S T A T E - O F - T H E - A R T G Y M





Bespoke SERVICES

WE SEE THINGS YOUR WAY. TRUST US TO SEE THINGS
FROM YOUR PERSPECTIVE, TO ANTICIPATE YOUR NEEDS
AND FULFILL YOUR WISHES.

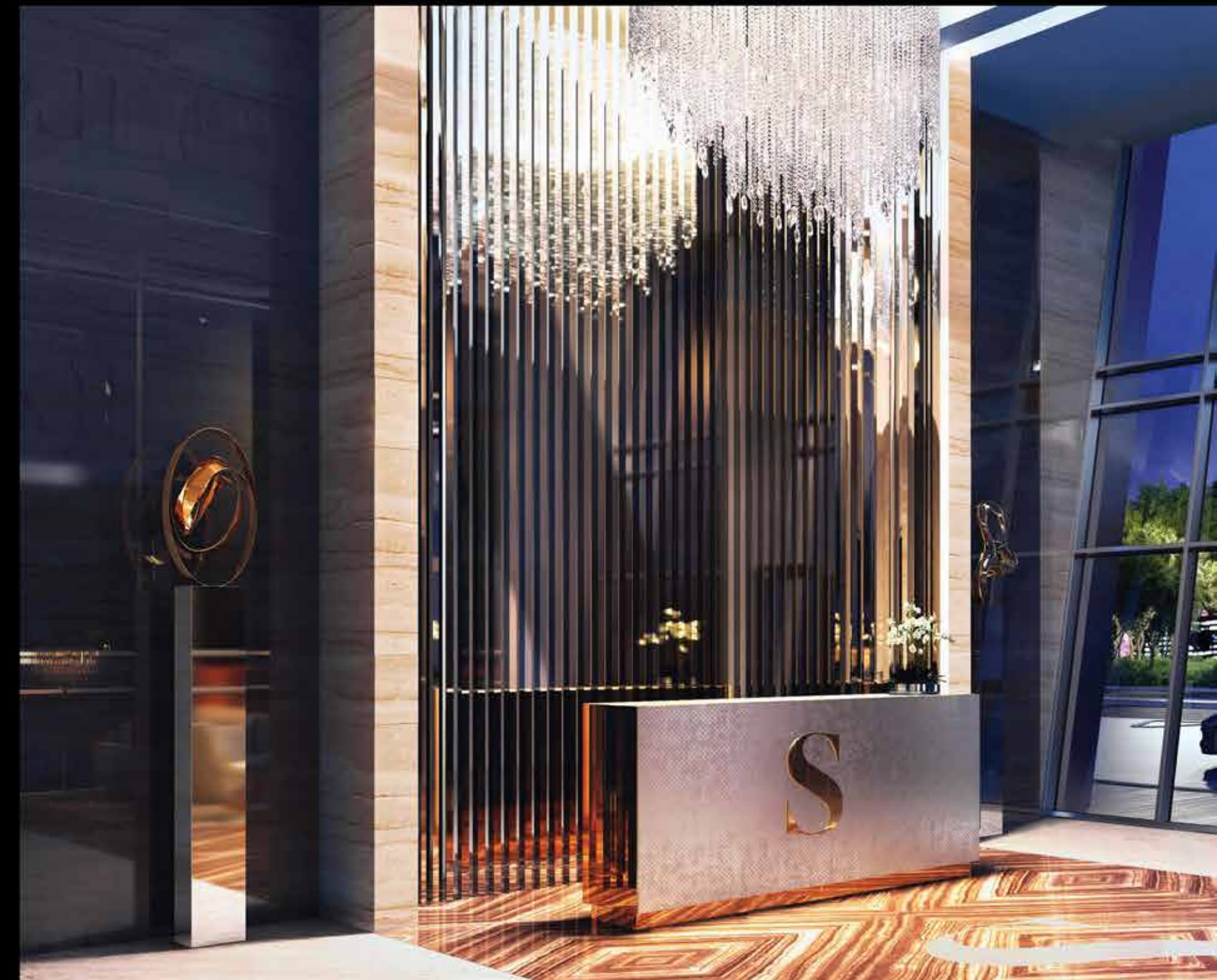


TAILOR-MADE TO SUIT YOU

We always provide more than you expect, with bespoke services, custom-made to answer all your demands.

The Sterling's exclusive residential membership comes with an extensive range of platinum services, arranged with conscientiousness, integrity, discretion and superior execution.

You can rely on us completely, for all your requirements, interests, desires and objectives, because we see things your way at The Sterling.





Life transformed **INTO ART**

A DESIRE TO ALWAYS LEAD THE WAY AND REACH FOR THE STARS. FROM EXTRAVAGANT SOPHISTICATION TO GLAMOUROUS STYLE, OMNIYAT STRIVES FOR EXCELLENCE IN EVERYTHING.



OMNIYAT CREATES BEAUTIFUL AND INSPIRING ENVIRONMENTS

Omnijat creates living canvases of residential, commercial, hospitality and retail spaces – that offer an inimitable premium experience.

We approach the design, development and management of

each Omnijat property as if it were a unique work of art. Just as there is no mistaking a Picasso or a Van Gogh, there is no mistaking that you are anywhere but in an Omnijat property. We nurture and maintain close relationships with the world's leading architects, engineers, interior designers and artists.

Each project is unique, designed to create a superior return on investment and to give every home owner the Omnijat guarantee of living in a bespoke space that reflects their personality, achievements and ambitions.





LANGHAM PLACE DOWNTOWN DUBAI

The Langham Group have amassed an impressive array of awards for excellence in the field of luxury hospitality, including the award for the World's Most Popular Luxury Hotel Brands, in 2015.

Omnivyat, Dubai's most prestigious and respected developer has strategically partnered with this eminent international hotel operator to add Langham Place Downtown Dubai to its portfolio of trophy assets a modern embodiment of the immaculate Langham style and tradition. The 167 hotel rooms and 239 fully-serviced five star residences; ranging from deluxe to one, two and three bedroom suites, and duplex penthouses is currently under construction.



THE PAD

Built with a unique slant angle of 6.5 degree, and coupled with a stunning façade to illuminate the Burj Khalifa district, The Pad is home to one of Dubai's most luxurious furnished apartments, for those who want to live, work and play Miami-style.



THE OPUS

This is the building that never sleeps. The Opus by Omniyat is the first foray into Dubai by the world-famous architect Dame Zaha Hadid and a destination in its own right. With an organic void right at the heart of the building it is an architectural wonder made of engineering at its most impressive. Located in Dubai's Burj Khalifa district, The Opus combines a variety of residences and a design hotel operated by the leading hotelier group ME by Melia Hotels International.



ONE PALM

Crafted for the most privileged of the privileged few.

On the world's premier man-made island, this is where every man is an island. Designed by the award winning New Yorker firm SOMA Architects, ONE is an eye-catching architectural statement that draws reality to the ethereal. Japanese interior design firm Super Potato harnesses imagination through their tactile approach of utilizing different materials. Every unit becomes a statement of personal taste and rigor furnished by high-end design.

S