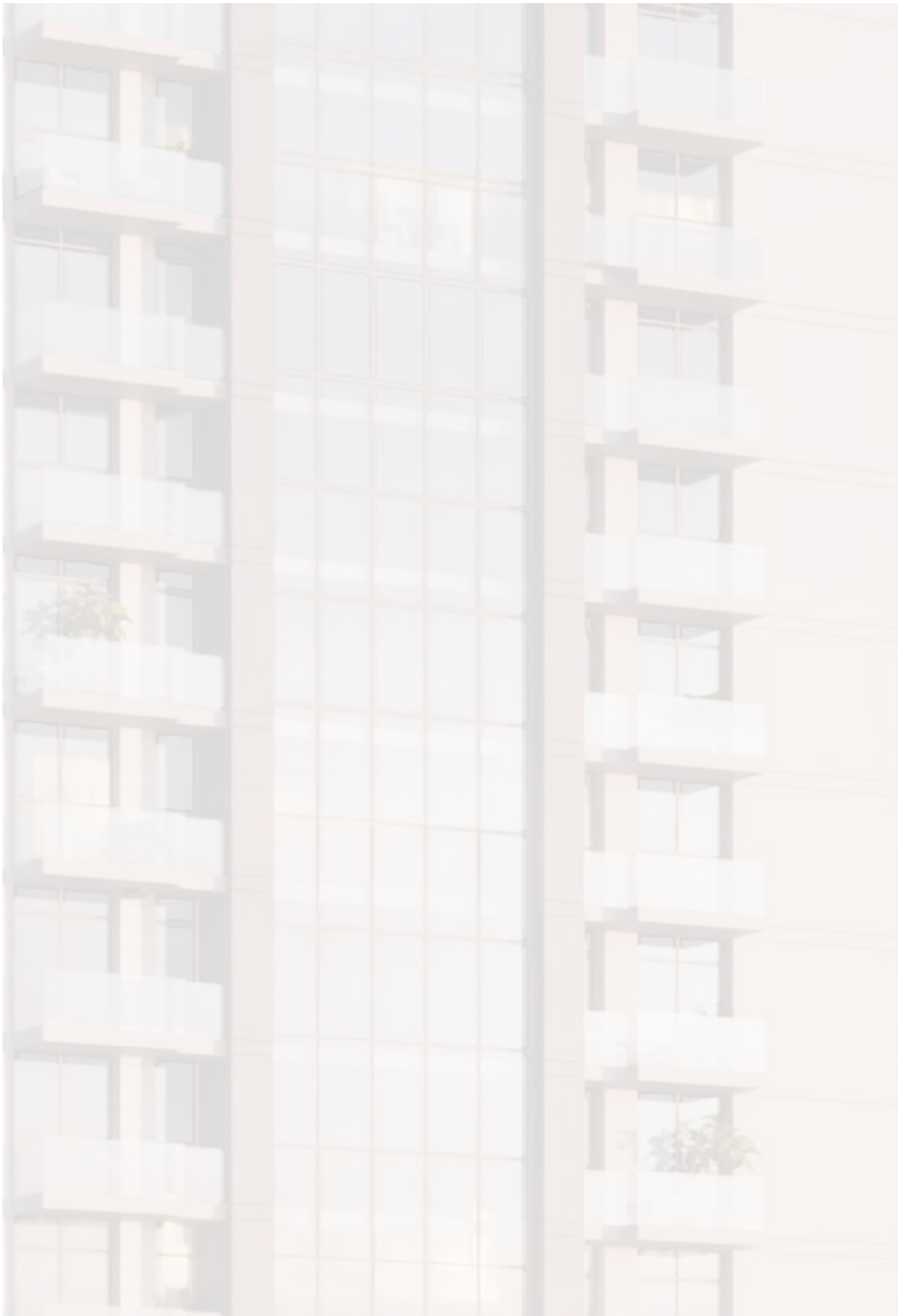
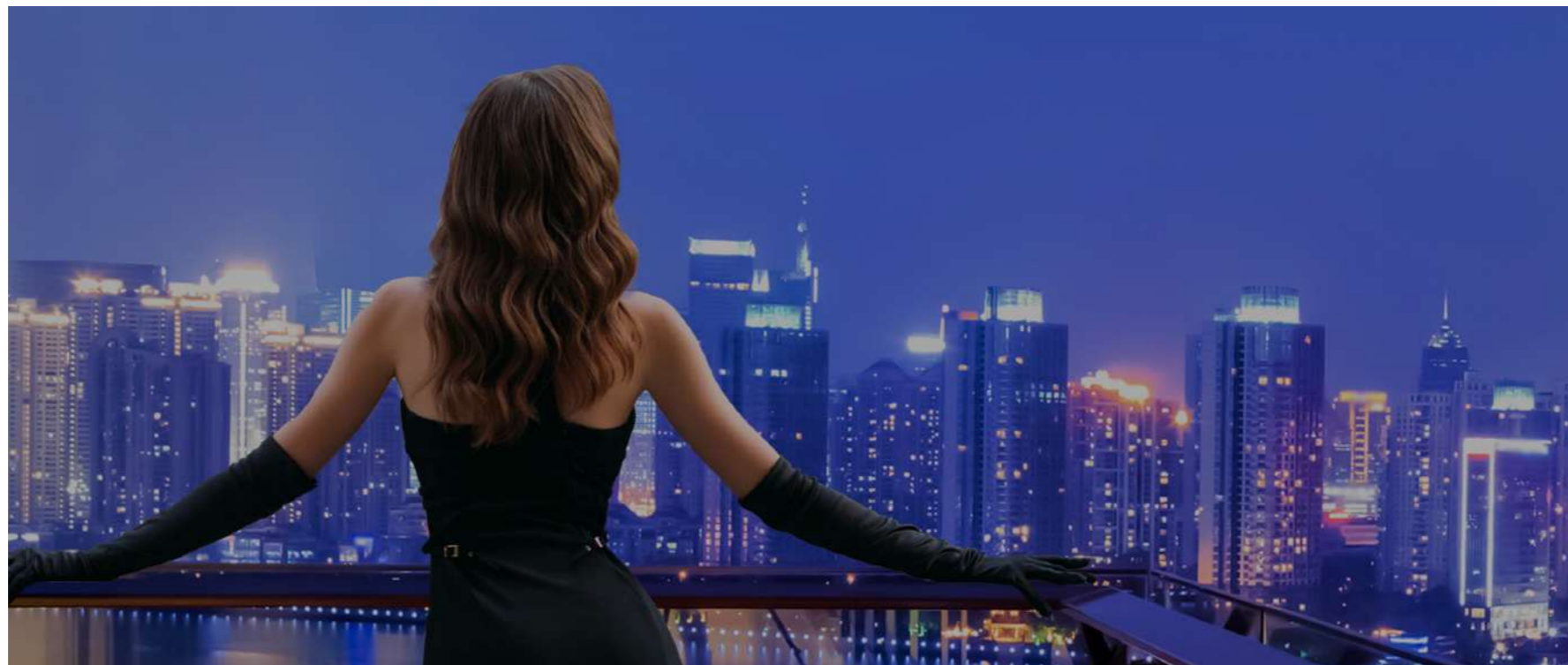




VITA GRANDE
by
METEORA



THE SKYLINE OF JUMEIRAH VILLAGE CIRCLE HAS A NEW COMPANION



VITA GRANDE

Rising over 250 feet above the Village Parks at North-East of Lazuward, the 19 Storey Vita Grande will be ready for handover by the 4th quarter of 2024!

DISCOVER GRAND

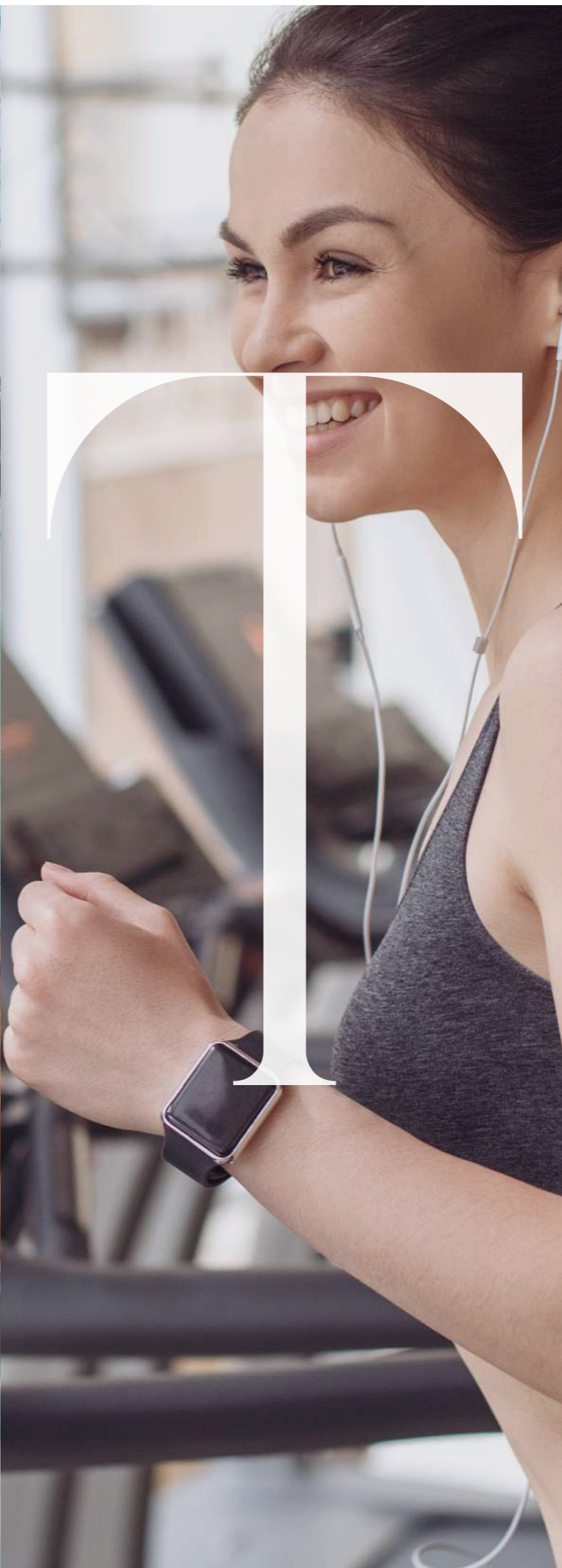
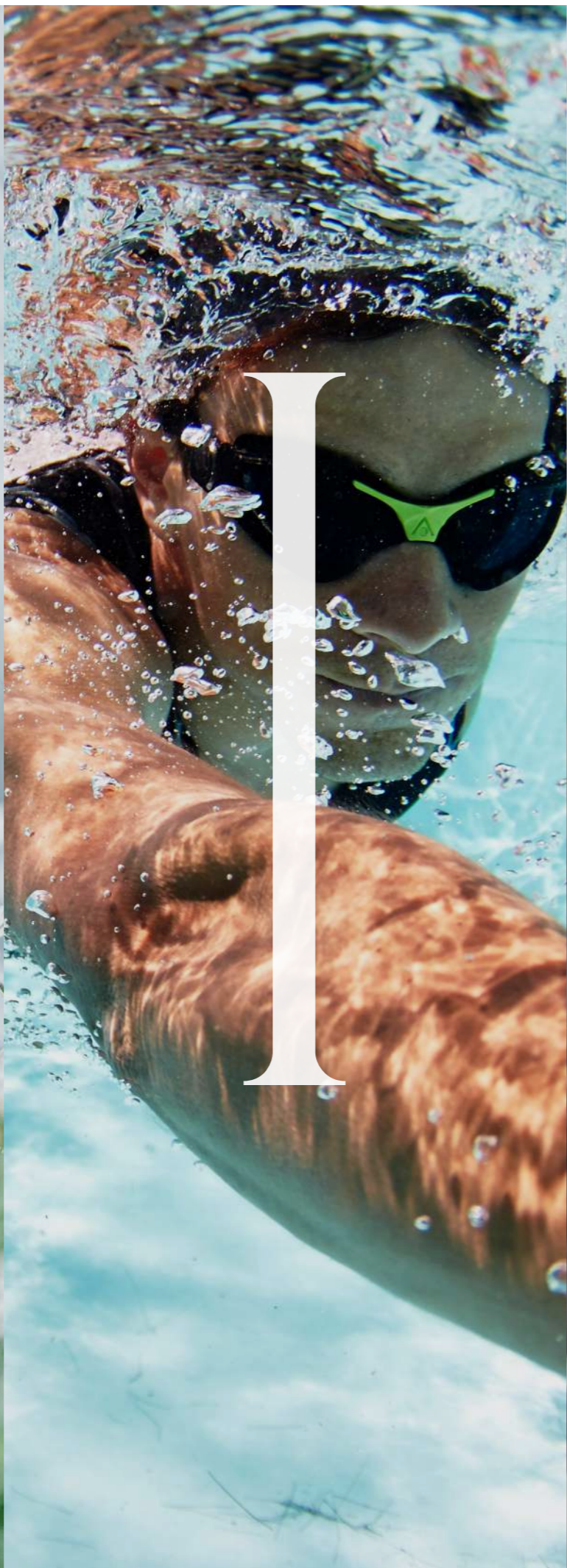
Every building tells a story. Ours tells three. The open and airy podium design of the newly launched Vita Grande, connects your spirits to its predecessors - The East Crest and 7 Park Central launched and sold successfully in the market. In the boutique living spaces and across the spacious 1 bedroom layouts and a premium amenity lineup that makes it easy to stay close to home, a classic layout and custom details pay homage to Meteora's ethos of Elevated Privileges.





A MODERN VISION FOR LIFE IN THE URBAN

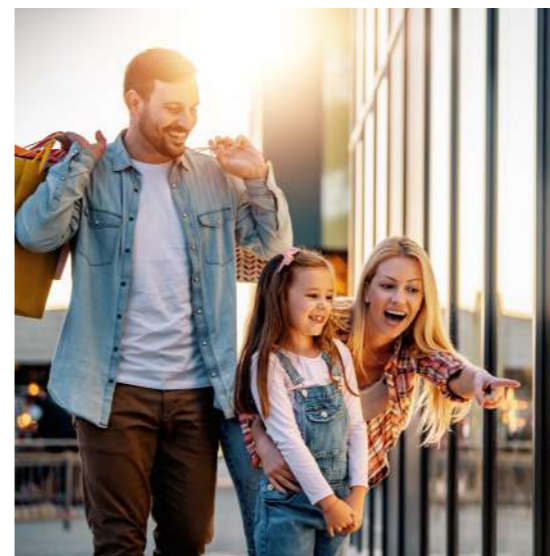
The Residences at Vita Grande are designed for flexible, family living, premium interior finishes, top of the line amenities, a generous private outdoor space, baths crafted for timeless durability - all of this in a multi-cultural community becoming popular by the day for its parks and urban village culture.





LIFE + STYLE

Make the most of life in the urban village with the help of a curated array of resident indulgences. Indoor and outdoor escapes combined with modern concierge-style conveniences, allowing you to enjoy your day with ease.





EXPERIENCE THE HARMONY OF MODERN LIVING

Step out of your door and you walk into the heart of an urban capital boasting silver skyscrapers, green parks, couture avenues, cultural institutions, museums from the future, the city turns urban legends into your neighbours - close to all, but set just enough apart. This urban oasis is an ideal place to call home.



THE VILLAGE THE PARKS AND YOU!

The neighbourhood offers a wealth of opportunities for walking, playing, and getting in shape, including numerous gyms, boutique fitness venues, playgrounds, athletic fields, and several of Dubai's best parks.



An ideal community for families, Jumeirah Village Circle also hosts international schools, town and country clubs, community centre and medical facilities.

Those who like to indulge in physical activities, can make use of the community sports and leisure amenities like football and cricket pitches, tennis courts, croquet lawns, swimming pools as well as jogging and cycling trails.

Children can make use of beautiful and green play areas, game areas and cycling tracks. Being a pet friendly community, it also houses veterinary clinics in its vicinity.

Moving from the urban streetscape to the calming green parks, you are bound to acknowledge the energies and distinct characters of the buildings in your path, morphing to the surroundings.

You'll feel connected amid the awe-inspiring towers of The First Collection, Five Jumeirah Village Hotel, The Marriott Residences and HE Hotels in this landscape of a single choreographed gesture.



THE GRANDE LIFE

From its shimmering exterior of glass and stainless steel to the oasis-like calm of its entrance, every level of this modern tower conveys quality without compromise. A modern structure advanced using contemporary materials, the building angles toward exceptional views creating the perfect setting for the indoor-outdoor comforts that define the standards of urban living.

The remarkable sunsets that color the parks and the village will warm the residences at Vita Grande by METEORA.



Blending ideally proportioned rooms, fine engineering, quality materials and versatile planning, Meteora has reinvented premium living for our times!





Thoughtfully considered with modern design and awe-inspiring views for relaxing, reflecting and entertaining, the living-room features a panoramic view and opens onto a gracious balcony with expansive vistas.



With exquisite lighting, ample countertops and generous space, the kitchens at Vita Grande by METEORA combine craftsmanship with ingenuity, providing a sleekly designed backdrop for epicurean activity.







Gracious and elegant, these primary bedrooms epitomize elevated living with panoramic details, providing a welcome respite from the energetic excitement of urban living.





The bathrooms at Vita Grande are designed for calm, rest, and energizing relaxation with porcelain tiles spanning the floors and transitioning to glass-enclosed showers.





Vita Grande's fully landscaped podium-level courtyard invites residents to rejuvenate their souls. Sunlight highlights the flora and fauna growing in unique planters aside from pristinely carved and integrated benches.

The niceties at Vita Grande are exceptional and essential for elevated living. Amenities abound to stir your senses while serving your needs. The tranquil swimming pool pavilion is set within a comfortable-height space for most.

In addition to the swimming pavilion, Vita Grande offers a rich set of amenities designed to enhance everyday. There are a range of resident-only facilities for unwinding within the comfort of your home, including a state of the art fitness center and a colorful play area for the building's youngest set along with an outdoor cinema experience.



In the Community

SCHOOLS

Kids World Nursery
Ladybird Nursery

HOSPITALS/ CLINICS

Magnum Family Medical Centre
Right Health Karama Medical Centre

SHOPPING

Circle Mall

SUPERMARKETS

Spinneys
Choitrams
West Zone Fresh
Aswaaq Mart
All Day MiniMart
Holiday Minimart

In the Neighbourhood

SCHOOLS

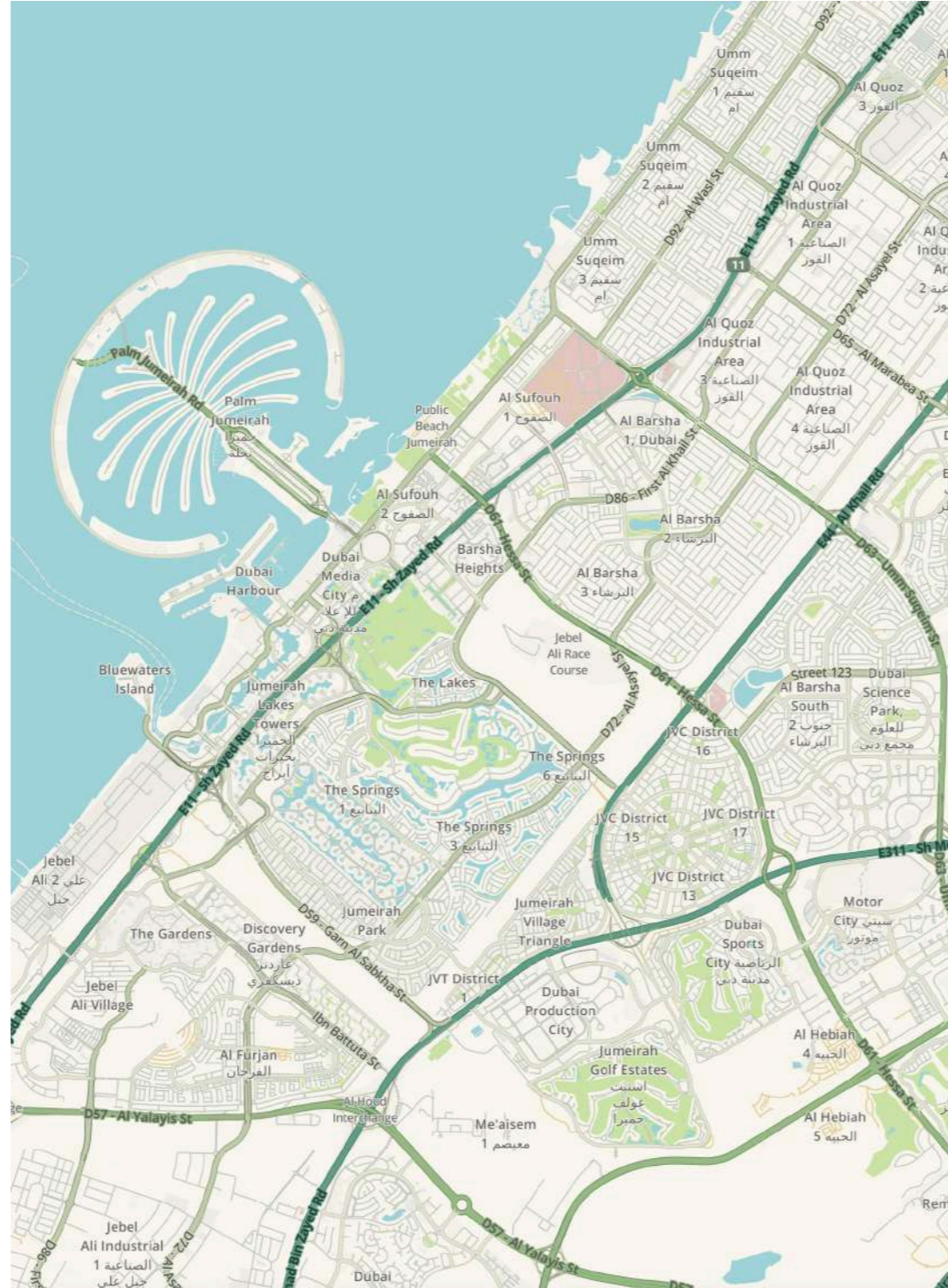
Gems United - Dubai Sports City - 5 Mins
Nord Anglia - Al Barsha South - 5 Mins
Gems World Academy - Al Barsha South - 5 Mins
Dubai British School - Emirates Hills - 7 Mins
Dubai International Academy - Emirates Hills - 7 Mins

MALLS

Al Khail Avenue Mall - JVC - 2 Mins
Mall of the Emirates - Al Barsha 1 - 15 Mins
Al Barsha Mall - Al Barsha 2 - 7 Mins
City Centre Al Barsha - Al Barsha South - 5 Mins

HOSPITALS / CLINICS

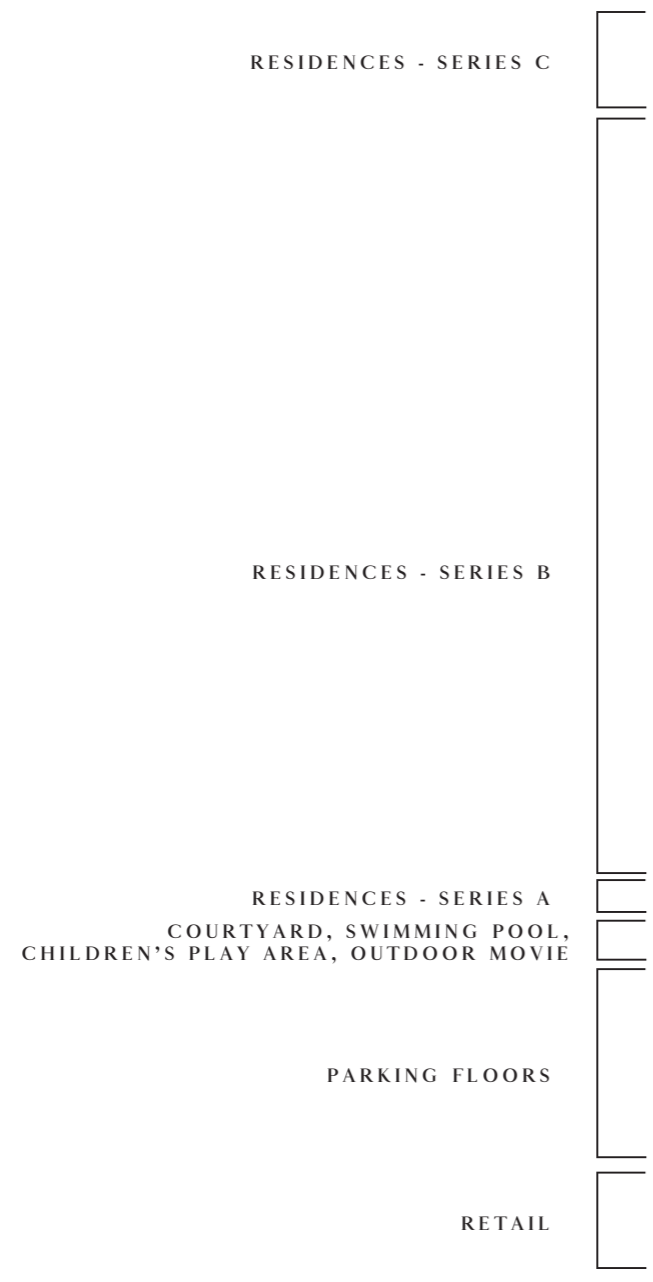
Emirates Hospital Day Surgery - Motor City - 5 Mins
Mediclinic Park View Hospital - Al Barsha Sth - 5Min
Saudi German Hospital - Al Barsha Sth - 5Mins



THE CENTRE OF EVERYTHING NEW

Jumeirah Village Circle is a world within itself, but right outside, all of Dubai is at your fingertips. JVC's pivotal location makes experiencing Dubai easy. Touted as Dubai's first ever Village Neighbourhood, Jumeirah Village Circle sits next to Jumeirah Village Triangle, Al Barsha South, Dubai Sports City and Motor City - right in the heart of what is often referred to as the New Dubai, built as the ultimate landscape of society, culture and commerce.





**KIDS+ADULTS
SWIMMING
POOL / GYM /
CHILDREN'S PLAY
AREA / OUTDOOR
MOVIE THEATRE
/ DEDICATED
RETAIL LEVEL /
ENTERTAINMENT
ZONE / WIDE
PLANK WHITE
OAK FLOORING
/ OVERSIZE
WINDOWS /
MARBLE KITCHEN
COUNTERTOPS
/ CUSTOM
CABINETS /
PORCELAIN
BATHROOM
FLOOR TILES /
CUSTOM VANITIES
AND MIRRORS
WITH INTEGRATED
LIGHTING**

Meteora has managed to instill remarkable warmth and privacy into each of the 118 residences spanning 15 floors. Multiple panoramic exposures, generous high ceilings and scale make a grand statement - yet still maintains a personal feel.

A

SERIES

1 Bedroom
1 Bathroom
1 Powder Room
700 - 990 sq.ft.

SOAK IN THE
VIBES OF THE
PODIUM LIFE

Disclaimer: 1. All room dimensions are measured to structural elements and exclude wall finishes and construction tolerances. 2. All dimensions have been provided by our consultant architects. 3. All materials, dimensions and drawings are approximate. Information is subject to change without notice. 4. Actual suite area may vary from the stated area. Drawings not to scale. The developer reserves the right to make revisions. 5. Calculation of suite area is measured as the area bounded by the centre line of demising or partition walls separating one unit from another unit, the exterior face of all exterior walls, and the exterior face of the corridor wall enclosing the adjoining unit. 6. Calculation of balcony area is measured as the area bounded by the centre line of demising or partition walls separating one unit from another unit, the outmost face of the enclosing guard and the external face of the adjoining balcony. 7. The units are measured at typical floor in the building. Columns may vary in size depending on the floor level. 8. For each unit type, unit sizes and details might be slightly different. Please refer to the sales and purchase agreement for the actual size of each specific unit.

01
FLOOR

101, 102, 103, 104,
105, 106
UNITS



A1
TYPE

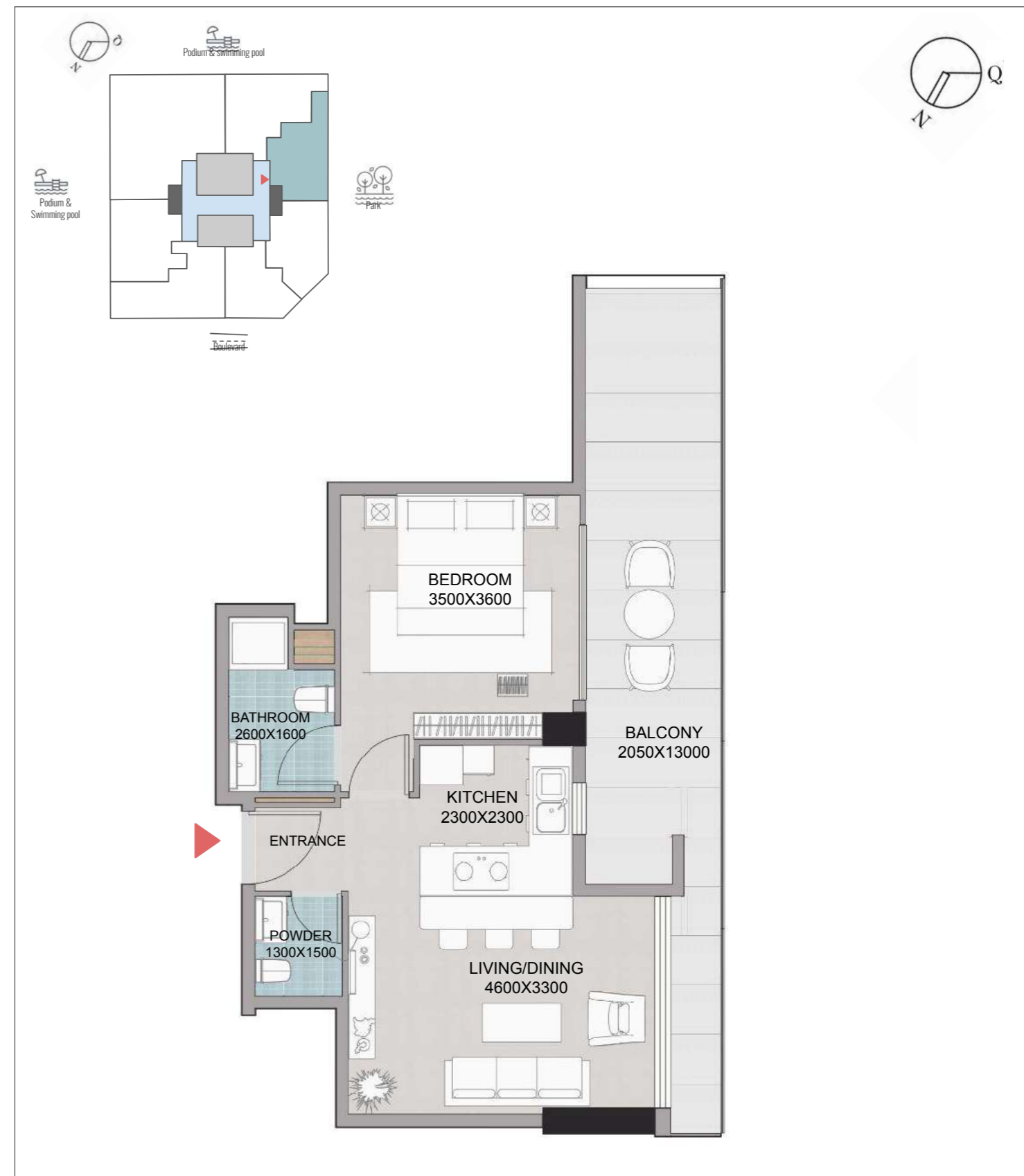
01
FLOOR

101
UNIT

968
AREA sq.ft.
APT 678 + BAL 290

VIEW
PARK,
PODIUM

Disclaimer: 1. All room dimensions are measured to structural elements and exclude wall finishes and construction tolerances. 2. All dimensions have been provided by our consultant architects. 3. All materials, dimensions and drawings are approximate. Information is subject to change without notice. 4. Actual suite area may vary from the stated area. Drawings not to scale. The developer reserves the right to make revisions. 5. Calculation of suite area is measured as the area bounded by the centre line of demising or partition walls separating one unit from another unit, the exterior face of all exterior walls, and the exterior face of the corridor wall enclosing the adjoining unit. 6. Calculation of balcony area is measured as the area bounded by the centre line of demising or partition walls separating one unit from another unit, the outmost face of the enclosing guard and the external face of the adjoining balcony. 7. The units are measured at typical floor in the building. Columns may vary in size depending on the floor level. 8. For each unit type, unit sizes and details might be slightly different. Please refer to the sales and purchase agreement for the actual size of each specific unit.



A2
TYPE

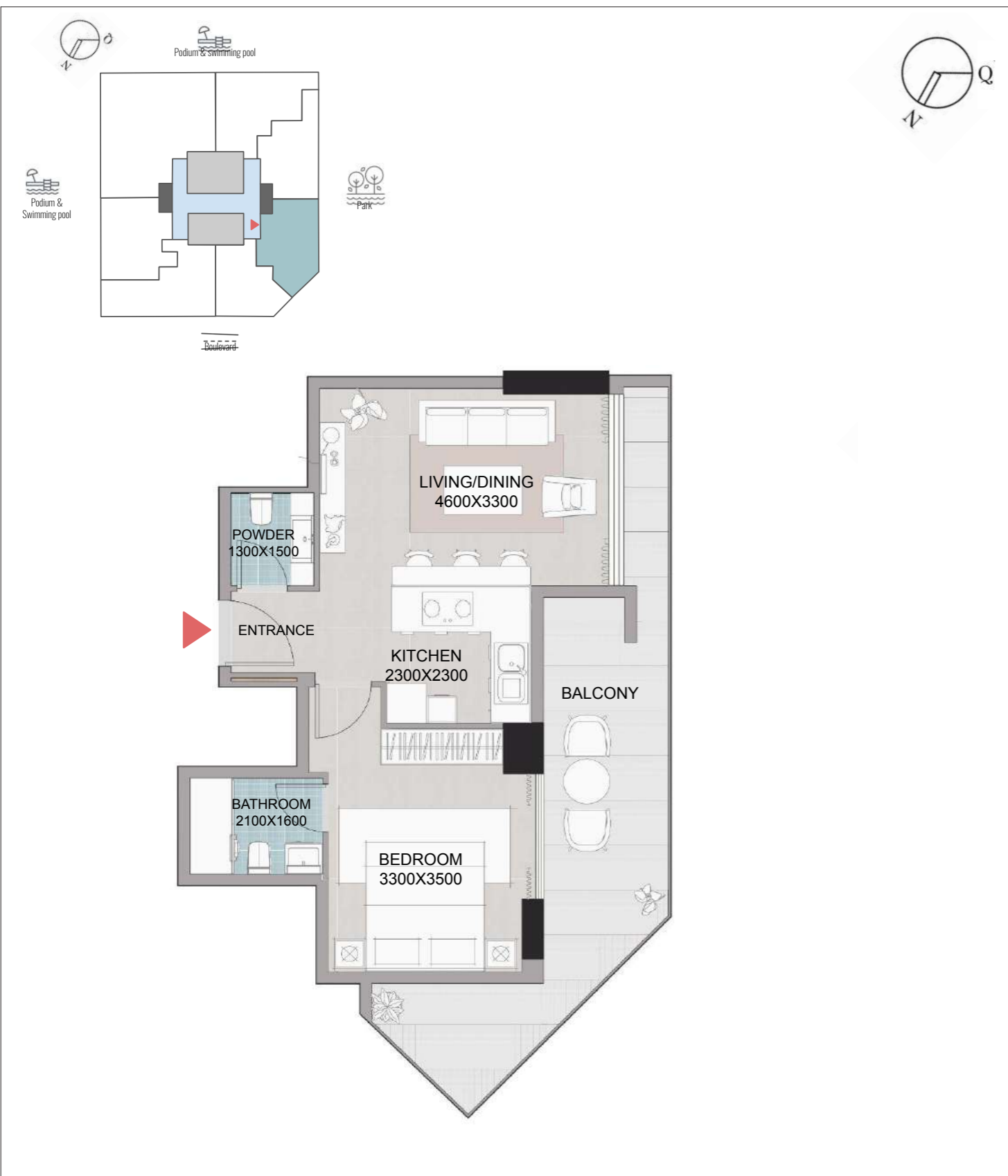
01
FLOOR

102
UNIT

785
AREA sq.ft.
APT 538 + BAL 247

VIEW
PARK,
PODIUM

Disclaimer: 1. All room dimensions are measured to structural elements and exclude wall finishes and construction tolerances. 2. All dimensions have been provided by our consultant architects. 3. All materials, dimensions and drawings are approximate. Information is subject to change without notice. 4. Actual suite area may vary from the stated area. Drawings not to scale. The developer reserves the right to make revisions. 5. Calculation of suite area is measured as the area bounded by the centre line of demising or partition walls separating one unit from another unit, the exterior face of all exterior walls, and the exterior face of the corridor wall enclosing the adjoining unit. 6. Calculation of balcony area is measured as the area bounded by the centre line of demising or partition walls separating one unit from another unit, the outmost face of the enclosing guard and the external face of the adjoining balcony. 7. The units are measured at typical floor in the building. Columns may vary in size depending on the floor level. 8. For each unit type, unit sizes and details might be slightly different. Please refer to the sales and purchase agreement for the actual size of each specific unit.



A3
TYPE

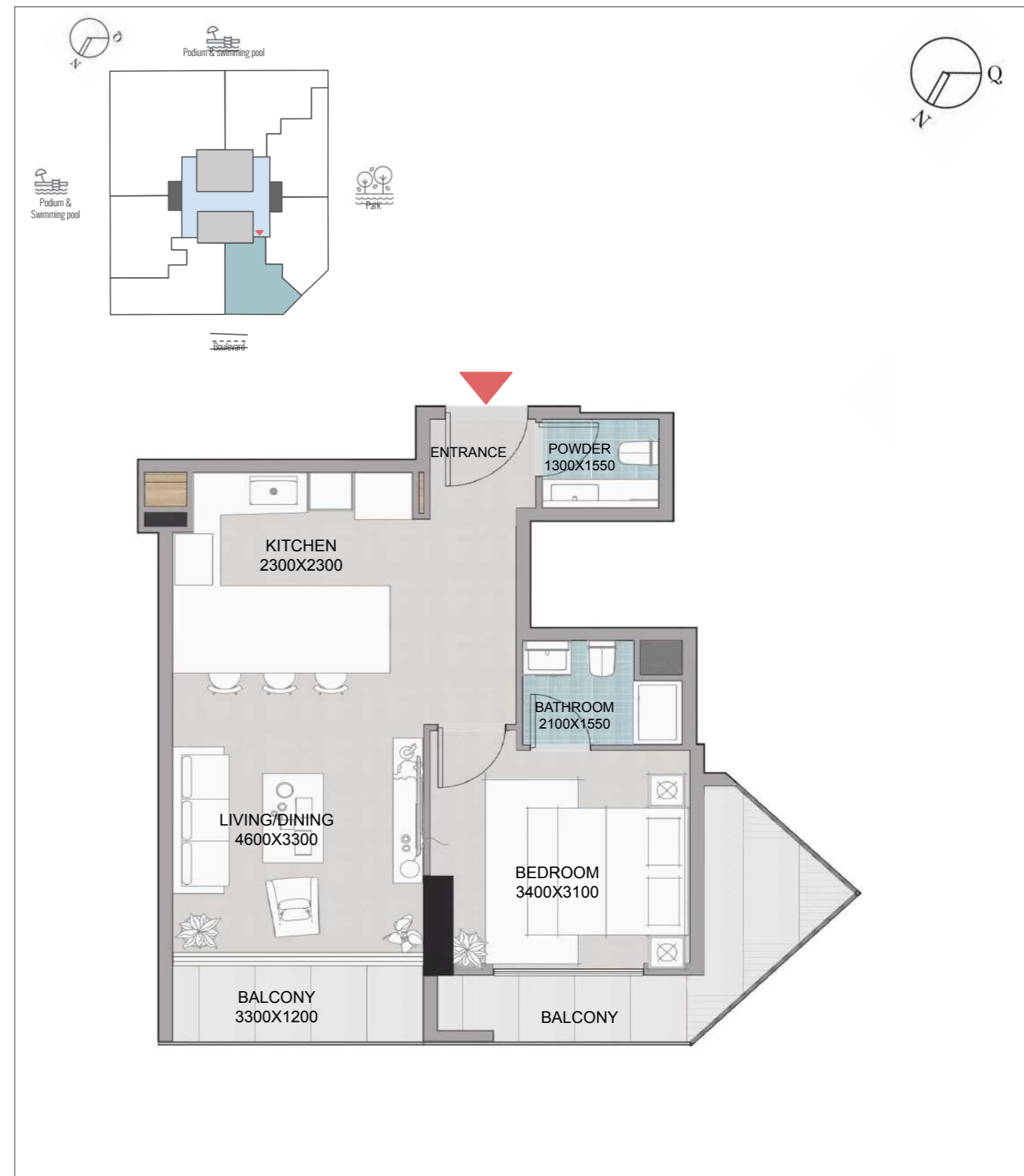
01
FLOOR

103
UNIT

763
AREA sq.ft.
APT 548 + BAL 215

VIEW
PARK,
BOULEVARD

Disclaimer: 1. All room dimensions are measured to structural elements and exclude wall finishes and construction tolerances. 2. All dimensions have been provided by our consultant architects. 3. All materials, dimensions and drawings are approximate. Information is subject to change without notice. 4. Actual suite area may vary from the stated area. Drawings not to scale. The developer reserves the right to make revisions. 5. Calculation of suite area is measured as the area bounded by the centre line of demising or partition walls separating one unit from another unit, the exterior face of all exterior walls, and the exterior face of the corridor wall enclosing the adjoining unit. 6. Calculation of balcony area is measured as the area bounded by the centre line of demising or partition walls separating one unit from another unit, the outmost face of the enclosing guard and the external face of the adjoining balcony. 7. The units are measured at typical floor in the building. Columns may vary in size depending on the floor level. 8. For each unit type, unit sizes and details might be slightly different. Please refer to the sales and purchase agreement for the actual size of each specific unit.



A4
TYPE

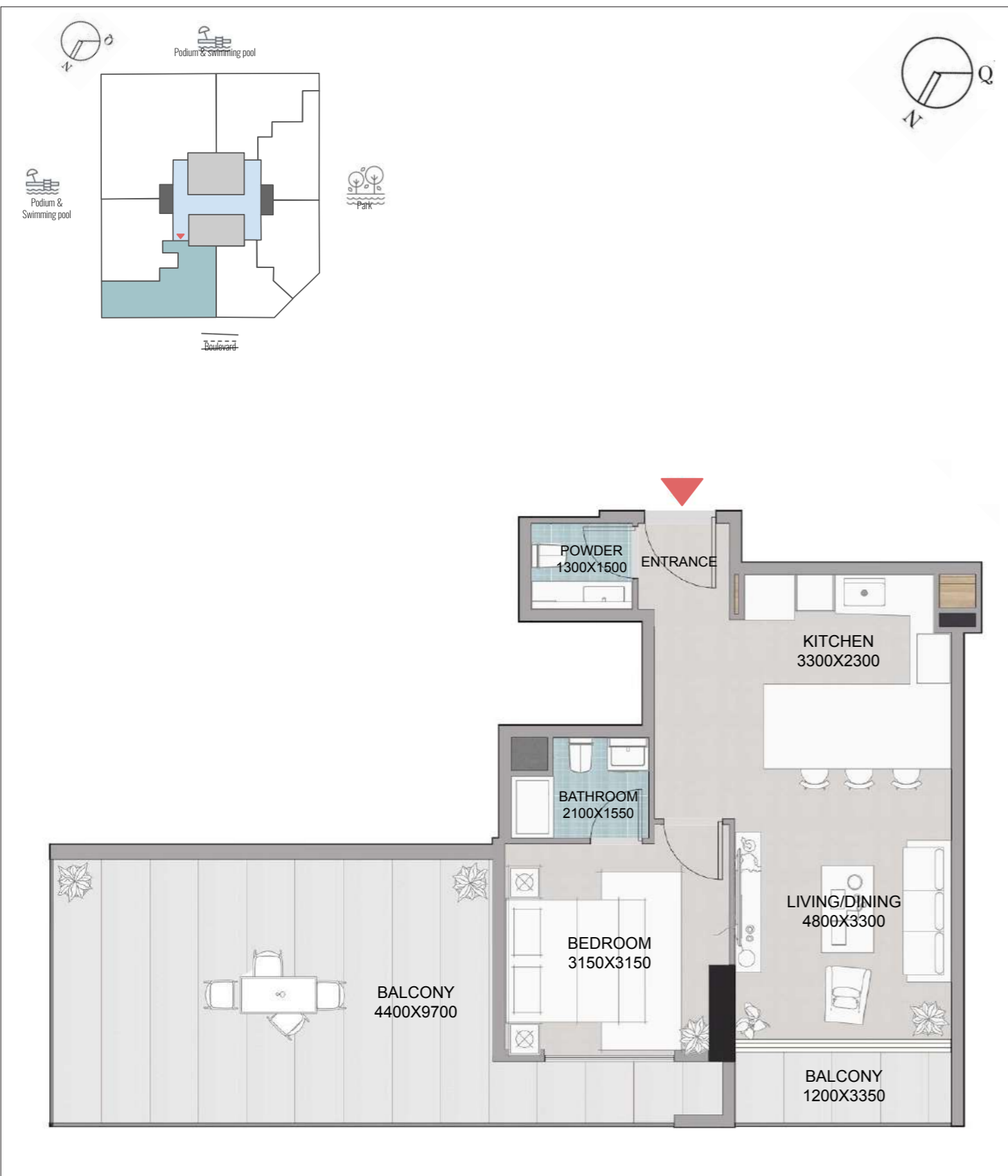
01
FLOOR

104
UNIT

700
AREA sq.ft.
APT 570 + BAL 130

VIEW
PARK,
BOULEVARD

Disclaimer: 1. All room dimensions are measured to structural elements and exclude wall finishes and construction tolerances. 2. All dimensions have been provided by our consultant architects. 3. All materials, dimensions and drawings are approximate. Information is subject to change without notice. 4. Actual suite area may vary from the stated area. Drawings not to scale. The developer reserves the right to make revisions. 5. Calculation of suite area is measured as the area bounded by the centre line of demising or partition walls separating one unit from another unit, the exterior face of all exterior walls, and the exterior face of the corridor wall enclosing the adjoining unit. 6. Calculation of balcony area is measured as the area bounded by the centre line of demising or partition walls separating one unit from another unit, the outmost face of the enclosing guard and the external face of the adjoining balcony. 7. The units are measured at typical floor in the building. Columns may vary in size depending on the floor level. 8. For each unit type, unit sizes and details might be slightly different. Please refer to the sales and purchase agreement for the actual size of each specific unit.



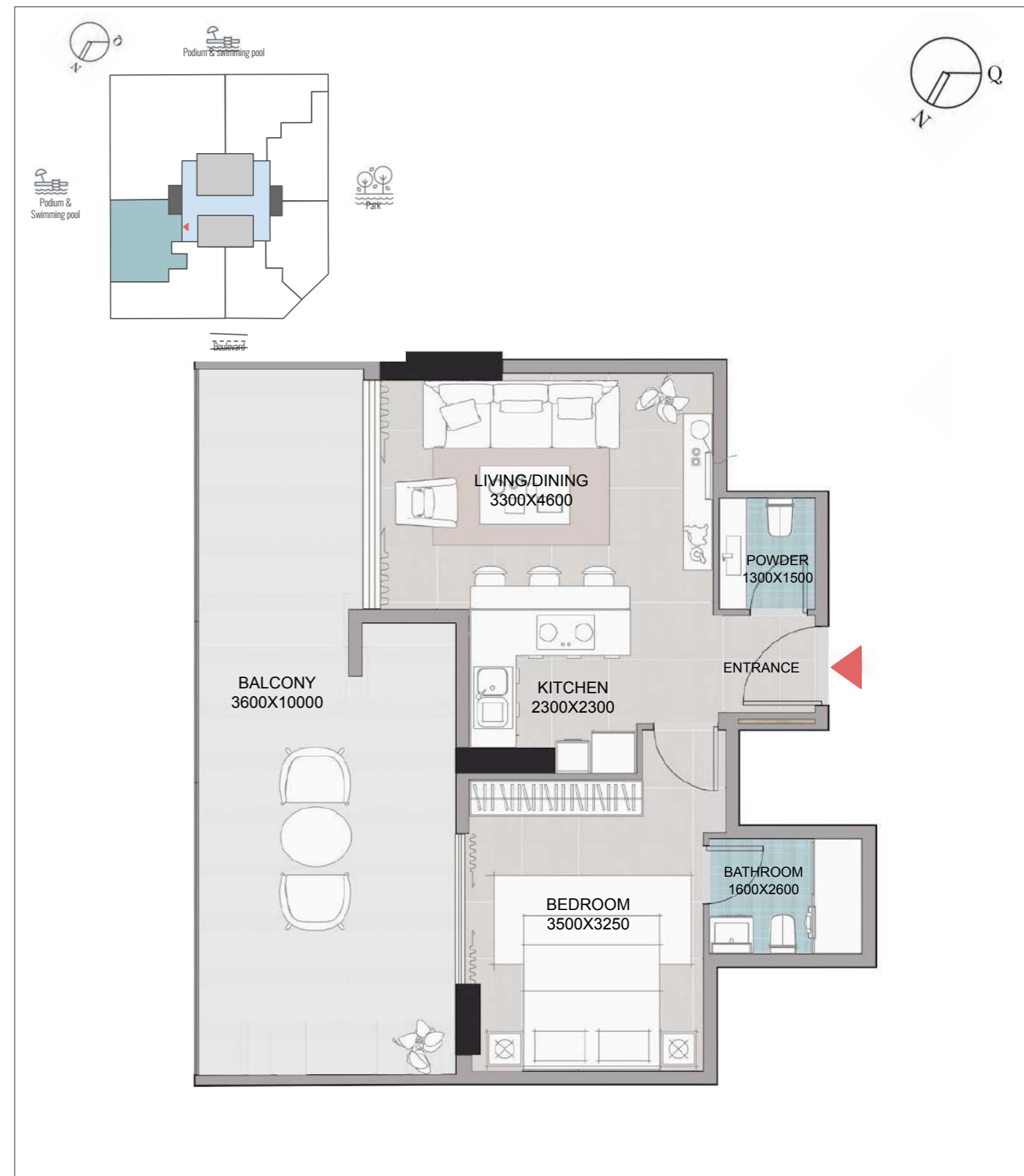
A5
TYPE

01
FLOOR

105
UNIT

990
AREA sq.ft.
APT 570 + BAL 420

VIEW
PODIUM,
BOULEVARD



A6
TYPE

01
FLOOR

106
UNIT

883
AREA sq.ft.
APT 549 + BAL 334

VIEW
PODIUM

Disclaimer: 1. All room dimensions are measured to structural elements and exclude wall finishes and construction tolerances. 2. All dimensions have been provided by our consultant architects. 3. All materials, dimensions and drawings are approximate. Information is subject to change without notice. 4. Actual suite area may vary from the stated area. Drawings not to scale. The developer reserves the right to make revisions. 5. Calculation of suite area is measured as the area bounded by the centre line of demising or partition walls separating one unit from another unit, the exterior face of all exterior walls, and the exterior face of the corridor wall enclosing the adjoining unit. 6. Calculation of balcony area is measured as the area bounded by the centre line of demising or partition walls separating one unit from another unit, the outmost face of the enclosing guard and the external face of the adjoining balcony. 7. The units are measured at typical floor in the building. Columns may vary in size depending on the floor level. 8. For each unit type, unit sizes and details might be slightly different. Please refer to the sales and purchase agreement for the actual size of each specific unit.

Disclaimer: 1. All room dimensions are measured to structural elements and exclude wall finishes and construction tolerances. 2. All dimensions have been provided by our consultant architects. 3. All materials, dimensions and drawings are approximate. Information is subject to change without notice. 4. Actual suite area may vary from the stated area. Drawings not to scale. The developer reserves the right to make revisions. 5. Calculation of suite area is measured as the area bounded by the centre line of demising or partition walls separating one unit from another unit, the exterior face of all exterior walls, and the exterior face of the corridor wall enclosing the adjoining unit. 6. Calculation of balcony area is measured as the area bounded by the centre line of demising or partition walls separating one unit from another unit, the outmost face of the enclosing guard and the external face of the adjoining balcony. 7. The units are measured at typical floor in the building. Columns may vary in size depending on the floor level. 8. For each unit type, unit sizes and details might be slightly different. Please refer to the sales and purchase agreement for the actual size of each specific unit.

B

SERIES

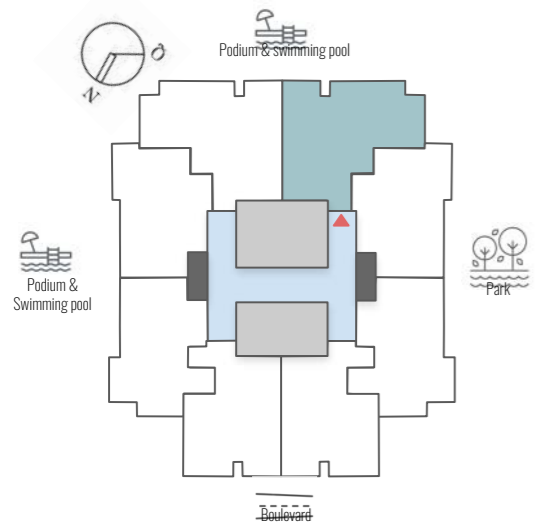
1 Bedroom
1 Bathroom
1 Powder Room
644 - 785 sq.ft.

SERENE LIVING
WITH EXPANSIVE
VIEWS

Disclaimer: 1. All room dimensions are measured to structural elements and exclude wall finishes and construction tolerances. 2. All dimensions have been provided by our consultant architects. 3. All materials, dimensions and drawings are approximate. Information is subject to change without notice. 4. Actual suite area may vary from the stated area. Drawings not to scale. The developer reserves the right to make revisions. 5. Calculation of suite area is measured as the area bounded by the centre line of demising or partition walls separating one unit from another unit, the exterior face of all exterior walls, and the exterior face of the corridor wall enclosing the adjoining unit. 6. Calculation of balcony area is measured as the area bounded by the centre line of demising or partition walls separating one unit from another unit, the outmost face of the enclosing guard and the external face of the adjoining balcony. 7. The units are measured at typical floor in the building. Columns may vary in size depending on the floor level. 8. For each unit type, unit sizes and details might be slightly different. Please refer to the sales and purchase agreement for the actual size of each specific unit.

02-14
FLOORS

X02, X03, X04, X05,
X06, X07, X08
UNITS



B1
TYPE

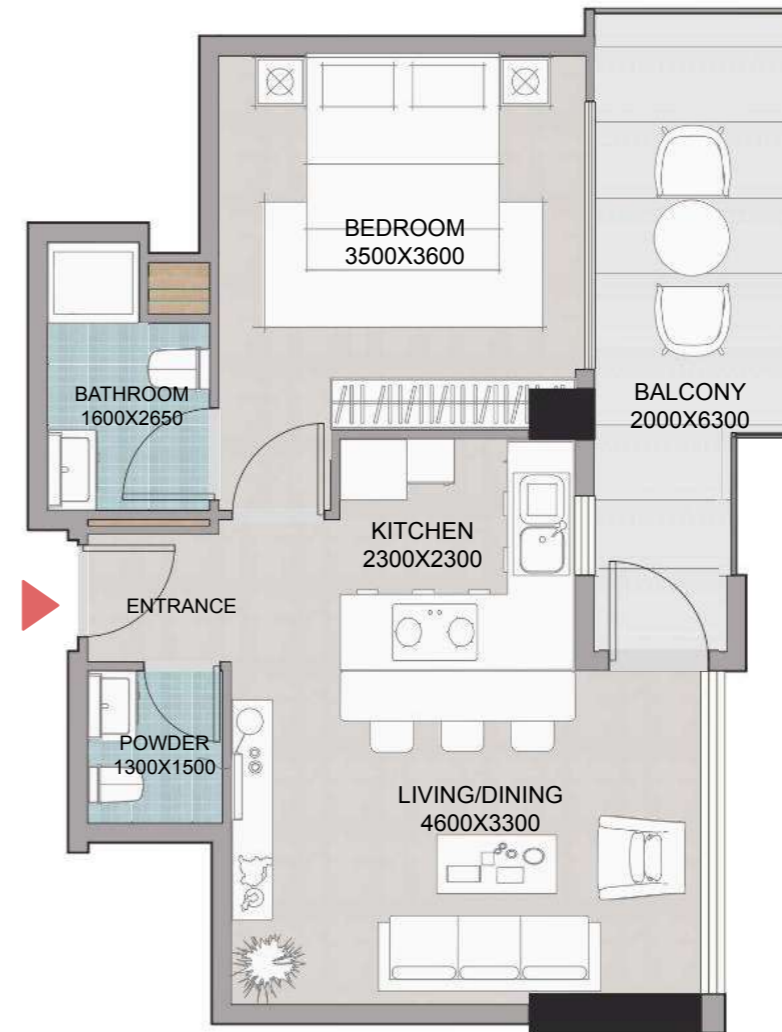
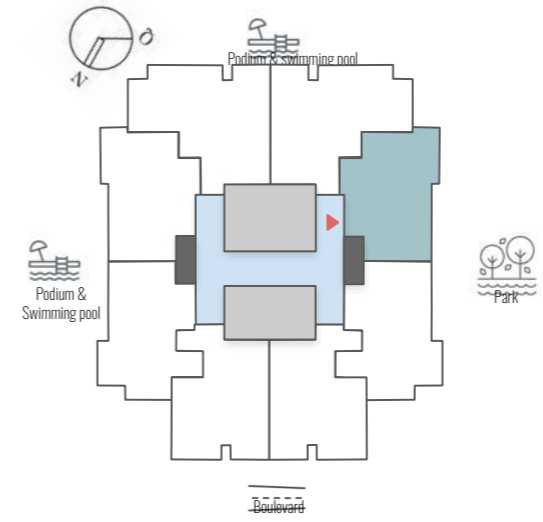
02-14
FLOOR

X01
UNIT

785
AREA sq.ft.
APT 678 + BAL 107

VIEW
PODIUM,
PARK (PARTIAL)

Disclaimer: 1. All room dimensions are measured to structural elements and exclude wall finishes and construction tolerances. 2. All dimensions have been provided by our consultant architects. 3. All materials, dimensions and drawings are approximate. Information is subject to change without notice. 4. Actual suite area may vary from the stated area. Drawings not to scale. The developer reserves the right to make revisions. 5. Calculation of suite area is measured as the area bounded by the centre line of demising or partition walls separating one unit from another unit, the exterior face of all exterior walls, and the exterior face of the corridor wall enclosing the adjoining unit. 6. Calculation of balcony area is measured as the area bounded by the centre line of demising or partition walls separating one unit from another unit, the outmost face of the enclosing guard and the external face of the adjoining balcony. 7. The units are measured at typical floor in the building. Columns may vary in size depending on the floor level. 8. For each unit type, unit sizes and details might be slightly different. Please refer to the sales and purchase agreement for the actual size of each specific unit.



B2
TYPE

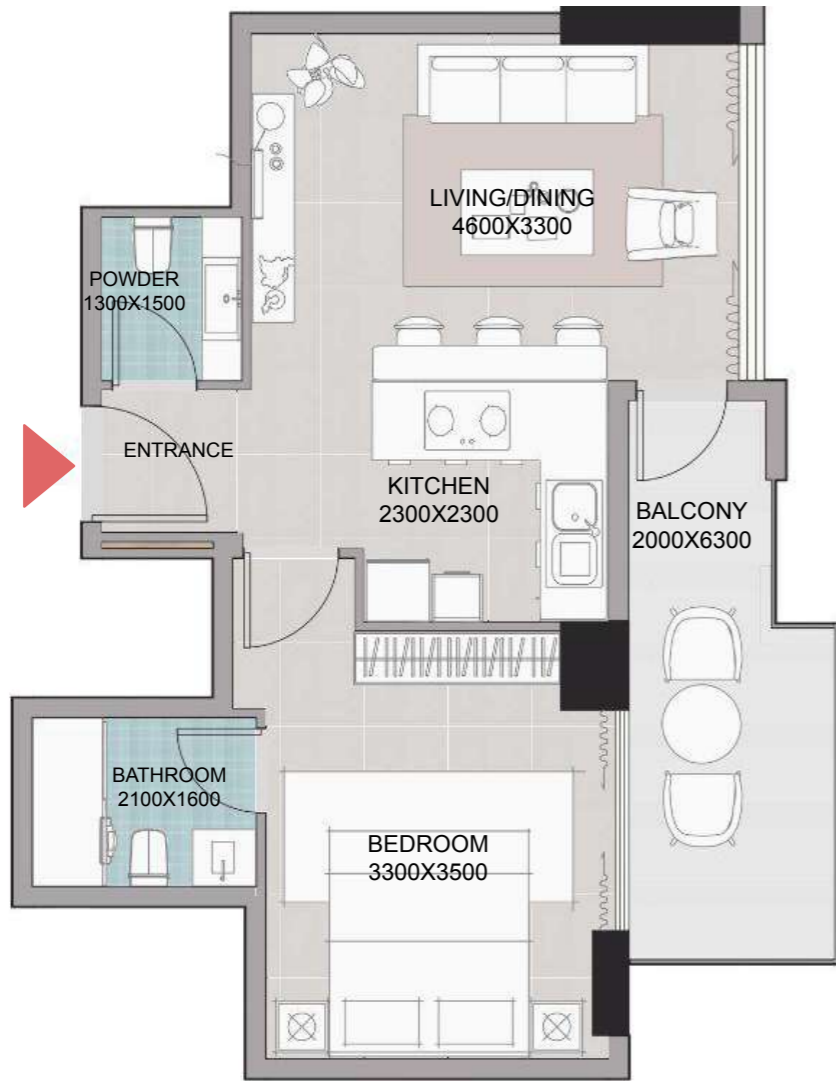
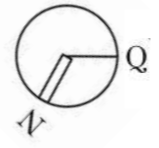
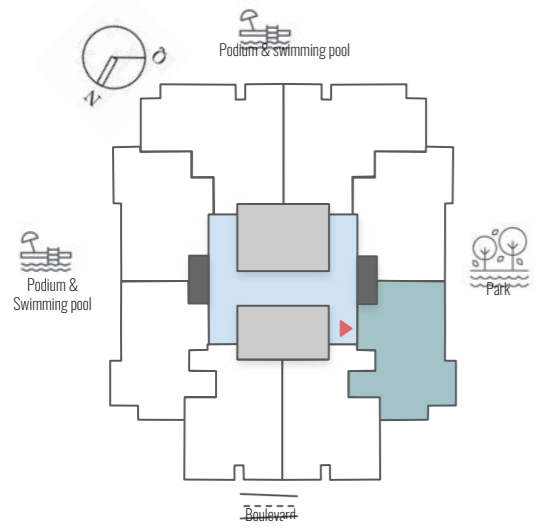
02-14
FLOOR

X02
UNIT

667
AREA sq.ft.
APT 549 + BAL 118

VIEW
PARK

Disclaimer: 1. All room dimensions are measured to structural elements and exclude wall finishes and construction tolerances. 2. All dimensions have been provided by our consultant architects. 3. All materials, dimensions and drawings are approximate. Information is subject to change without notice. 4. Actual suite area may vary from the stated area. Drawings not to scale. The developer reserves the right to make revisions. 5. Calculation of suite area is measured as the area bounded by the centre line of demising or partition walls separating one unit from another unit, the exterior face of all exterior walls, and the exterior face of the corridor wall enclosing the adjoining unit. 6. Calculation of balcony area is measured as the area bounded by the centre line of demising or partition walls separating one unit from another unit, the outmost face of the enclosing guard and the external face of the adjoining balcony. 7. The units are measured at typical floor in the building. Columns may vary in size depending on the floor level. 8. For each unit type, unit sizes and details might be slightly different. Please refer to the sales and purchase agreement for the actual size of each specific unit.



B3
TYPE

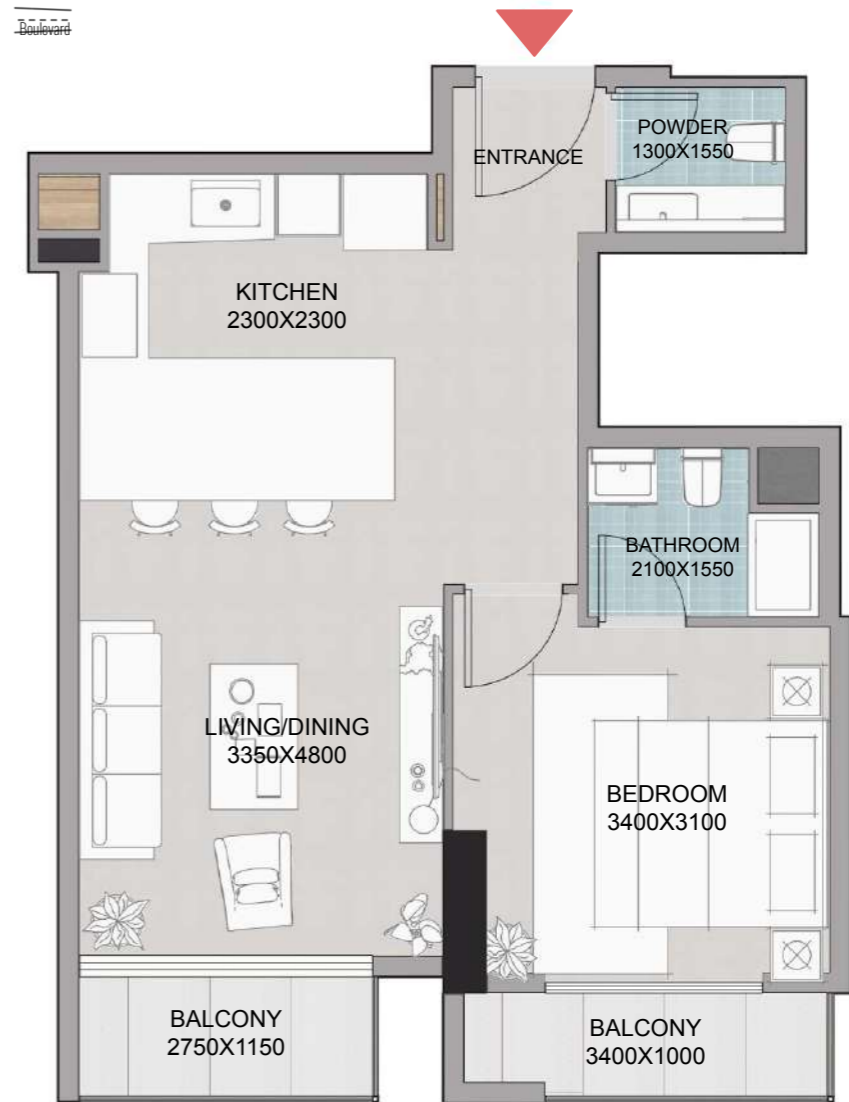
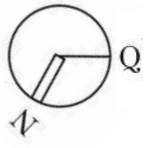
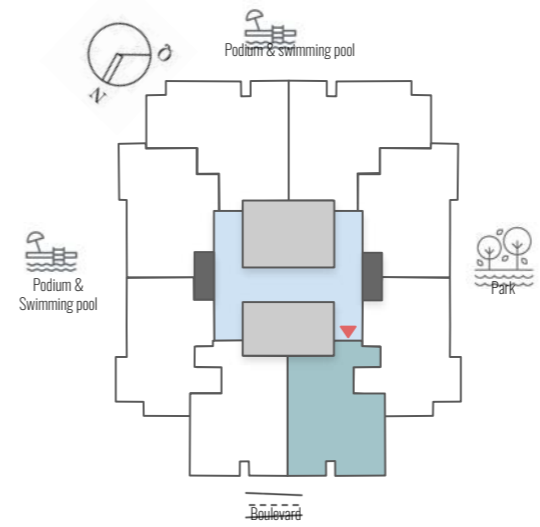
02-14
FLOOR

X03
UNIT

644
AREA sq.ft.
APT 548 + BAL 96

VIEW
PARK,
BOULEVARD

Disclaimer: 1. All room dimensions are measured to structural elements and exclude wall finishes and construction tolerances. 2. All dimensions have been provided by our consultant architects. 3. All materials, dimensions and drawings are approximate. Information is subject to change without notice. 4. Actual suite area may vary from the stated area. Drawings not to scale. The developer reserves the right to make revisions. 5. Calculation of suite area is measured as the area bounded by the centre line of demising or partition walls separating one unit from another unit, the exterior face of all exterior walls, and the exterior face of the corridor wall enclosing the adjoining unit. 6. Calculation of balcony area is measured as the area bounded by the centre line of demising or partition walls separating one unit from another unit, the outmost face of the enclosing guard and the external face of the adjoining balcony. 7. The units are measured at typical floor in the building. Columns may vary in size depending on the floor level. 8. For each unit type, unit sizes and details might be slightly different. Please refer to the sales and purchase agreement for the actual size of each specific unit.



B4
TYPE

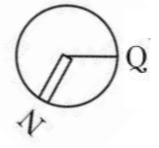
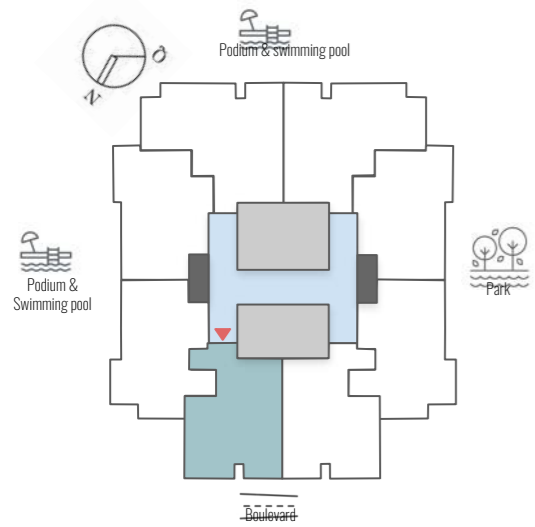
02-14
FLOOR

X04
UNIT

645
AREA sq.ft.
APT 570 + BAL 75

VIEW
PARK (PARTIAL),
BOULEVARD

Disclaimer: 1. All room dimensions are measured to structural elements and exclude wall finishes and construction tolerances. 2. All dimensions have been provided by our consultant architects. 3. All materials, dimensions and drawings are approximate. Information is subject to change without notice. 4. Actual suite area may vary from the stated area. Drawings not to scale. The developer reserves the right to make revisions. 5. Calculation of suite area is measured as the area bounded by the centre line of demising or partition walls separating one unit from another unit, the exterior face of all exterior walls, and the exterior face of the corridor wall enclosing the adjoining unit. 6. Calculation of balcony area is measured as the area bounded by the centre line of demising or partition walls separating one unit from another unit, the outmost face of the enclosing guard and the external face of the adjoining balcony. 7. The units are measured at typical floor in the building. Columns may vary in size depending on the floor level. 8. For each unit type, unit sizes and details might be slightly different. Please refer to the sales and purchase agreement for the actual size of each specific unit.



B5
TYPE

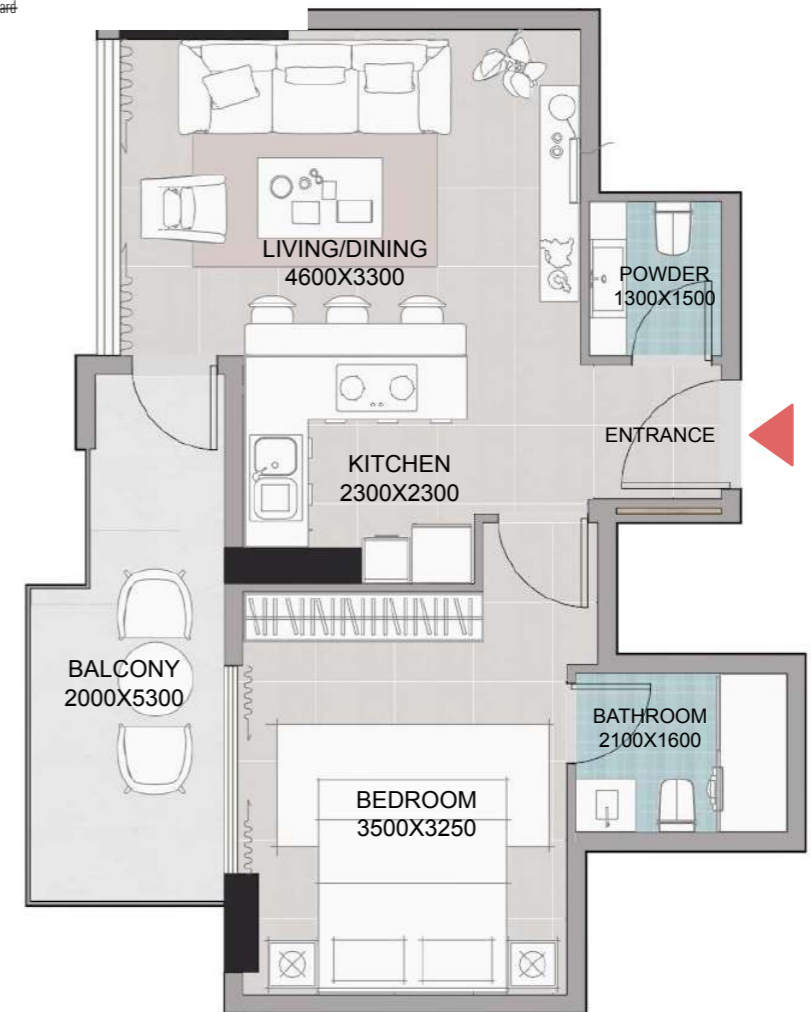
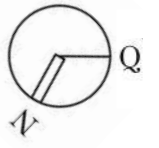
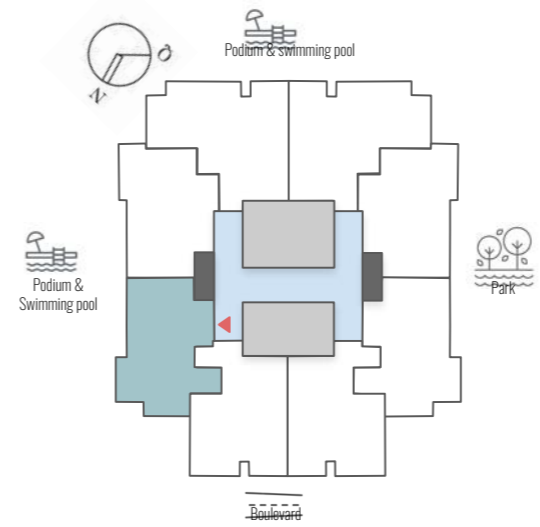
02-14
FLOOR

X05
UNIT

645
AREA sq.ft.
APT 570 + BAL 75

VIEW
BOULEVARD

Disclaimer: 1. All room dimensions are measured to structural elements and exclude wall finishes and construction tolerances. 2. All dimensions have been provided by our consultant architects. 3. All materials, dimensions and drawings are approximate. Information is subject to change without notice. 4. Actual suite area may vary from the stated area. Drawings not to scale. The developer reserves the right to make revisions. 5. Calculation of suite area is measured as the area bounded by the centre line of demising or partition walls separating one unit from another unit, the exterior face of all exterior walls, and the exterior face of the corridor wall enclosing the adjoining unit. 6. Calculation of balcony area is measured as the area bounded by the centre line of demising or partition walls separating one unit from another unit, the outmost face of the enclosing guard and the external face of the adjoining balcony. 7. The units are measured at typical floor in the building. Columns may vary in size depending on the floor level. 8. For each unit type, unit sizes and details might be slightly different. Please refer to the sales and purchase agreement for the actual size of each specific unit.



B6
TYPE

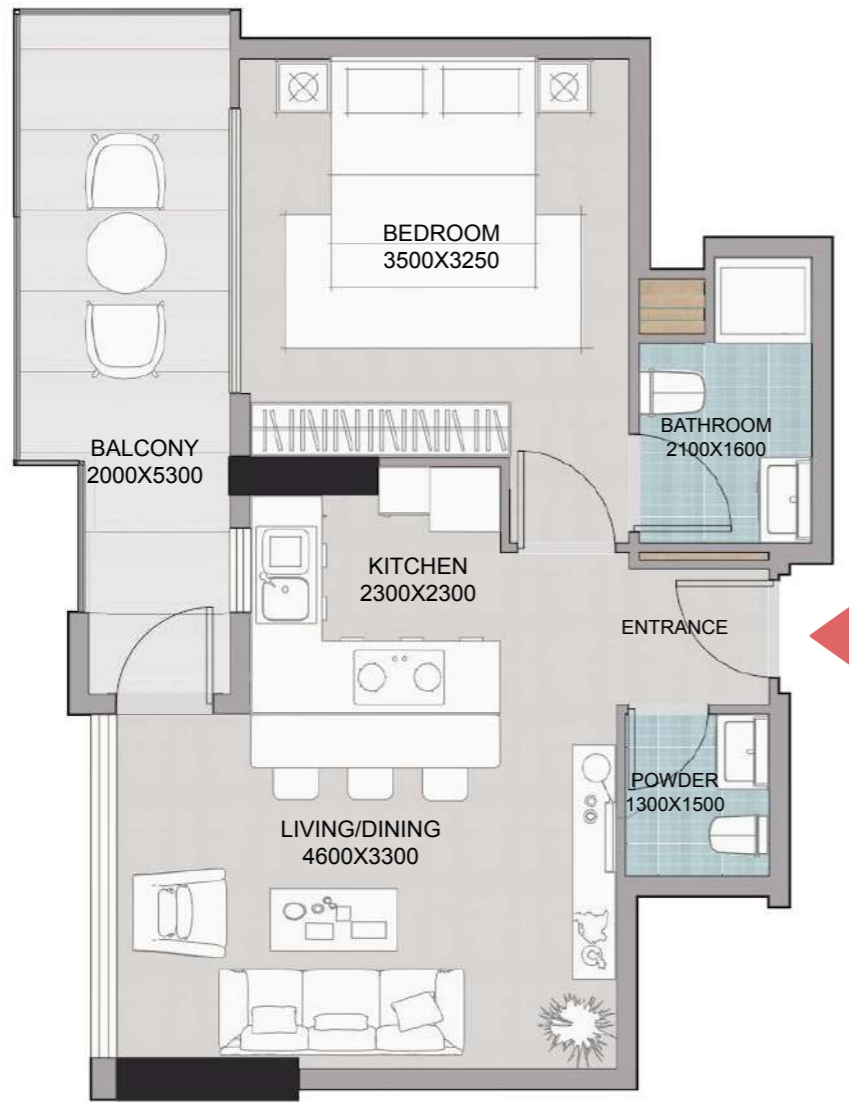
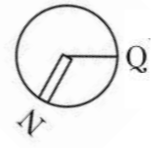
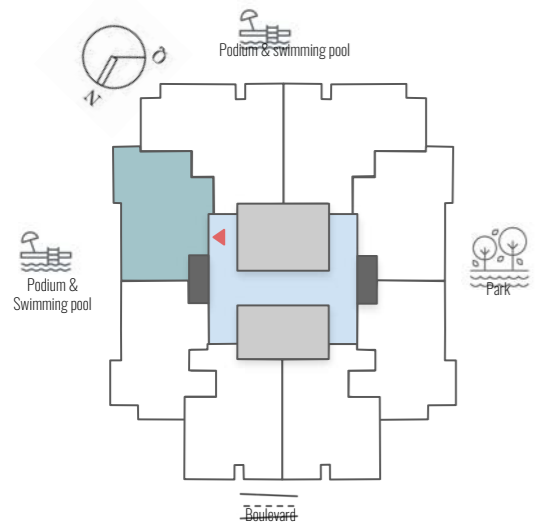
02-14
FLOOR

X06
UNIT

644
AREA sq.ft.
APT 548 + BAL 96

VIEW
PODIUM

Disclaimer: 1. All room dimensions are measured to structural elements and exclude wall finishes and construction tolerances. 2. All dimensions have been provided by our consultant architects. 3. All materials, dimensions and drawings are approximate. Information is subject to change without notice. 4. Actual suite area may vary from the stated area. Drawings not to scale. The developer reserves the right to make revisions. 5. Calculation of suite area is measured as the area bounded by the centre line of demising or partition walls separating one unit from another unit, the exterior face of all exterior walls, and the exterior face of the corridor wall enclosing the adjoining unit. 6. Calculation of balcony area is measured as the area bounded by the centre line of demising or partition walls separating one unit from another unit, the outmost face of the enclosing guard and the external face of the adjoining balcony. 7. The units are measured at typical floor in the building. Columns may vary in size depending on the floor level. 8. For each unit type, unit sizes and details might be slightly different. Please refer to the sales and purchase agreement for the actual size of each specific unit.



B7
TYPE

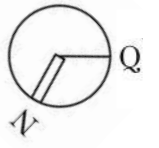
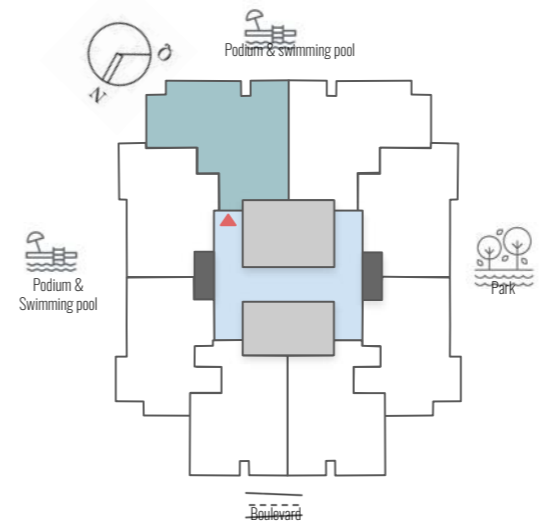
02-14
FLOOR

X07
UNIT

667
AREA sq.ft.
APT 549 + BAL.118

VIEW
PODIUM

Disclaimer: 1. All room dimensions are measured to structural elements and exclude wall finishes and construction tolerances. 2. All dimensions have been provided by our consultant architects. 3. All materials, dimensions and drawings are approximate. Information is subject to change without notice. 4. Actual suite area may vary from the stated area. Drawings not to scale. The developer reserves the right to make revisions. 5. Calculation of suite area is measured as the area bounded by the centre line of demising or partition walls separating one unit from another unit, the exterior face of all exterior walls, and the exterior face of the corridor wall enclosing the adjoining unit. 6. Calculation of balcony area is measured as the area bounded by the centre line of demising or partition walls separating one unit from another unit, the outmost face of the enclosing guard and the external face of the adjoining balcony. 7. The units are measured at typical floor in the building. Columns may vary in size depending on the floor level. 8. For each unit type, unit sizes and details might be slightly different. Please refer to the sales and purchase agreement for the actual size of each specific unit.



B8
TYPE

02-14
FLOOR

X08
UNIT

785
AREA sq.ft.
APT 678 + BAL.107

VIEW
PODIUM

Disclaimer: 1. All room dimensions are measured to structural elements and exclude wall finishes and construction tolerances. 2. All dimensions have been provided by our consultant architects. 3. All materials, dimensions and drawings are approximate. Information is subject to change without notice. 4. Actual suite area may vary from the stated area. Drawings not to scale. The developer reserves the right to make revisions. 5. Calculation of suite area is measured as the area bounded by the centre line of demising or partition walls separating one unit from another unit, the exterior face of all exterior walls, and the exterior face of the corridor wall enclosing the adjoining unit. 6. Calculation of balcony area is measured as the area bounded by the centre line of demising or partition walls separating one unit from another unit, the outmost face of the enclosing guard and the external face of the adjoining balcony. 7. The units are measured at typical floor in the building. Columns may vary in size depending on the floor level. 8. For each unit type, unit sizes and details might be slightly different. Please refer to the sales and purchase agreement for the actual size of each specific unit.



SERIES

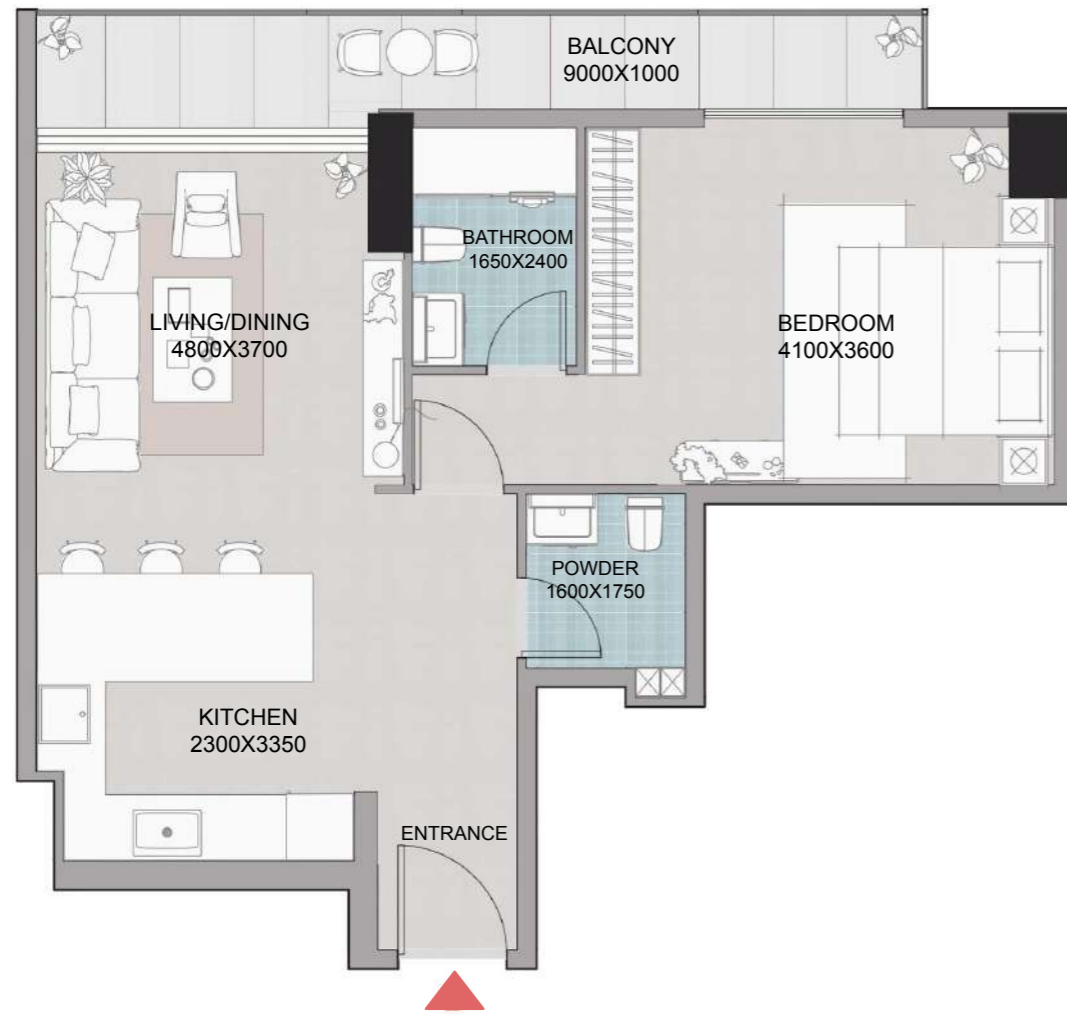
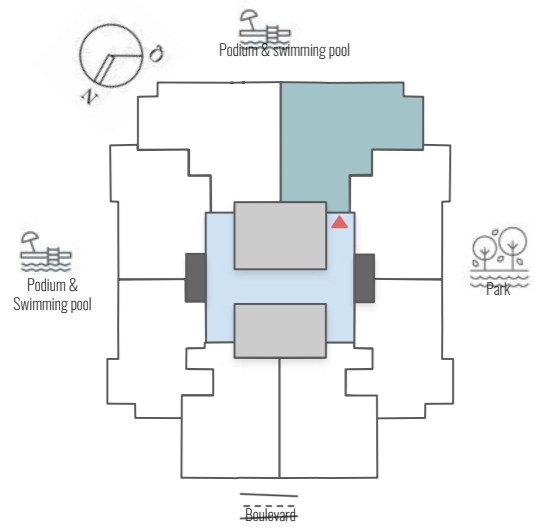
1 Bedroom
1 Bathroom
1 Powder Room
644 - 785 sq.ft.

SPECTACULAR
LIVING
AT 250 FEET

Disclaimer: 1. All room dimensions are measured to structural elements and exclude wall finishes and construction tolerances. 2. All dimensions have been provided by our consultant architects. 3. All materials, dimensions and drawings are approximate. Information is subject to change without notice. 4. Actual suite area may vary from the stated area. Drawings not to scale. The developer reserves the right to make revisions. 5. Calculation of suite area is measured as the area bounded by the centre line of demising or partition walls separating one unit from another unit, the exterior face of all exterior walls, and the exterior face of the corridor wall enclosing the adjoining unit. 6. Calculation of balcony area is measured as the area bounded by the centre line of demising or partition walls separating one unit from another unit, the outmost face of the enclosing guard and the external face of the adjoining balcony. 7. The units are measured at typical floor in the building. Columns may vary in size depending on the floor level. 8. For each unit type, unit sizes and details might be slightly different. Please refer to the sales and purchase agreement for the actual size of each specific unit.

15
FLOOR

1501, 1502, 1503,
1504, 1505, 1506,
1507, 1508
UNITS



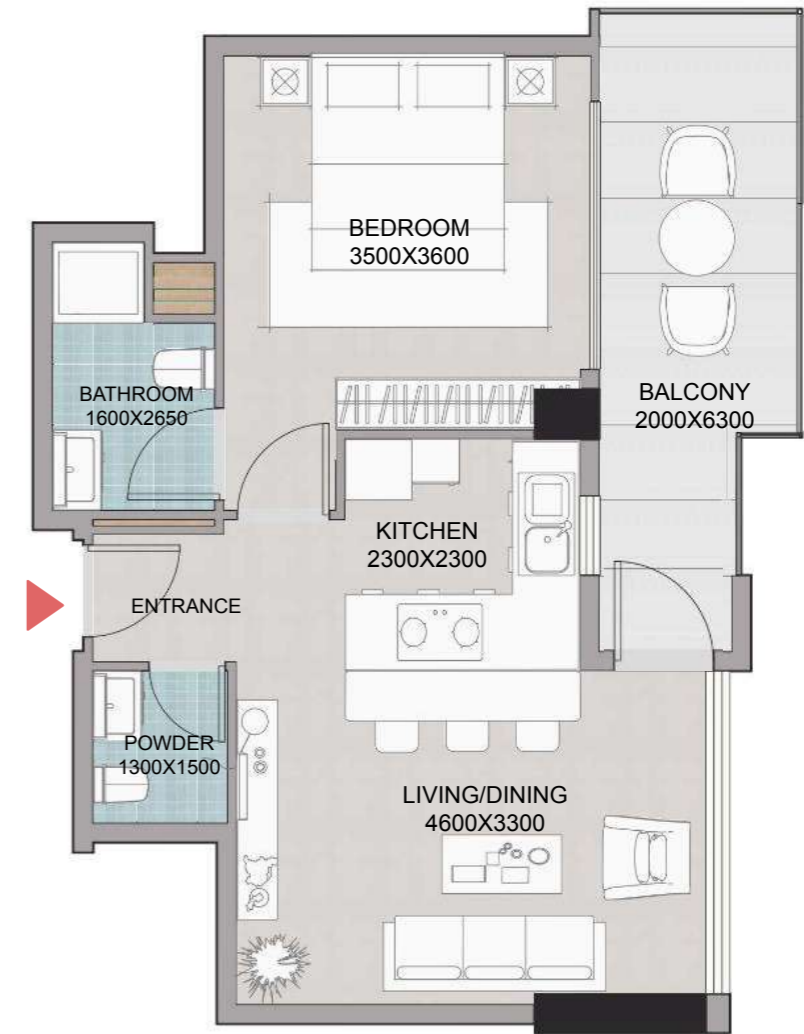
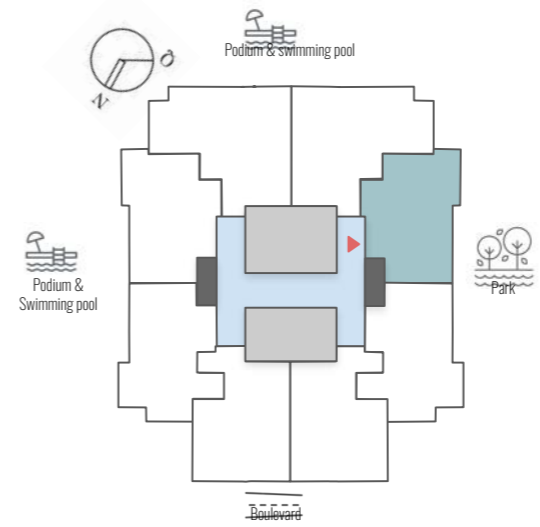
C1
TYPE

15
FLOOR

1501
UNIT

774
AREA sq.ft.
APT 678 + BAL.96

VIEW
PODIUM,
PARK (PARTIAL)



C2
TYPE

15
FLOOR

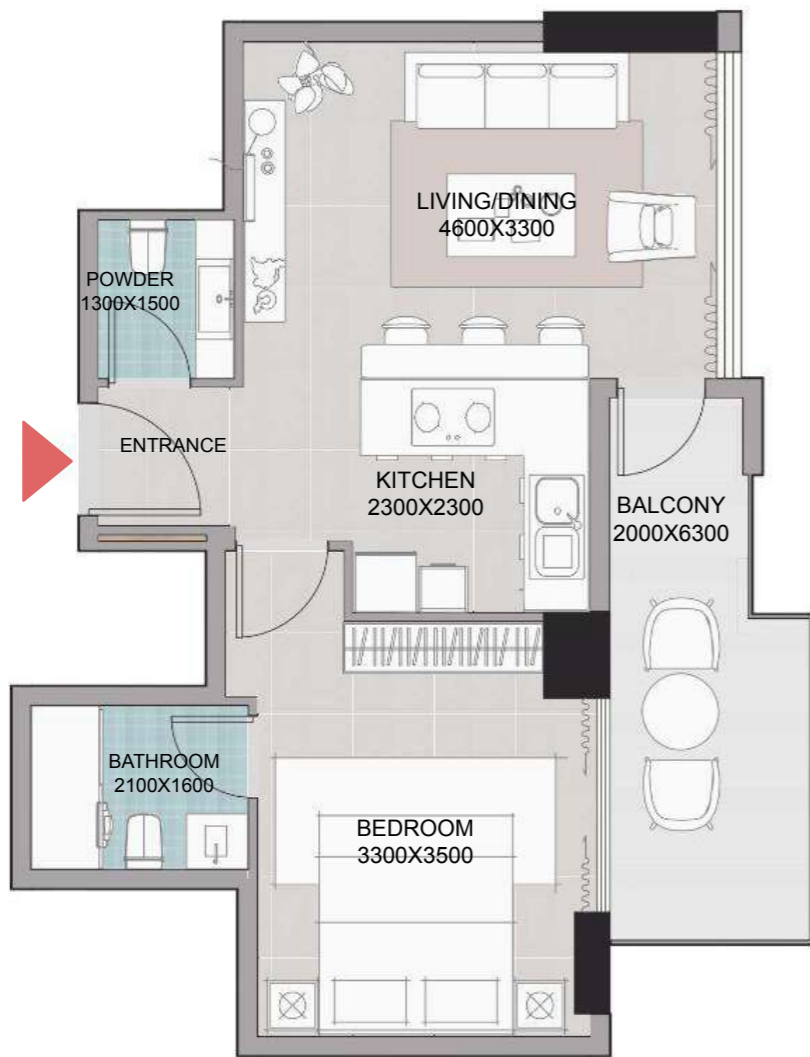
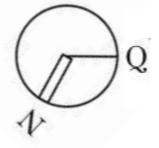
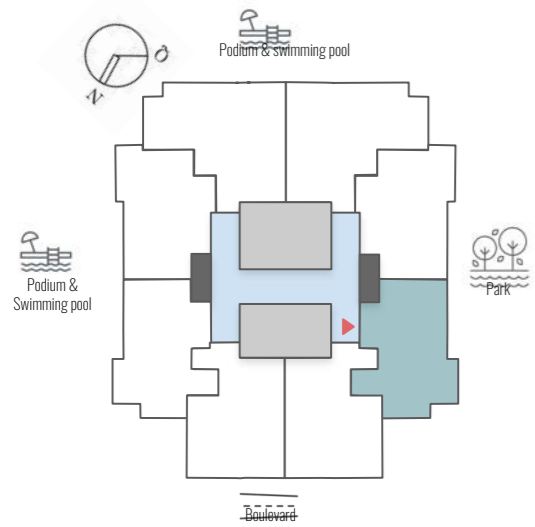
1502
UNIT

667
AREA sq.ft.
APT 549 + BAL.118

VIEW
PARK

Disclaimer: 1. All room dimensions are measured to structural elements and exclude wall finishes and construction tolerances. 2. All dimensions have been provided by our consultant architects. 3. All materials, dimensions and drawings are approximate. Information is subject to change without notice. 4. Actual suite area may vary from the stated area. Drawings not to scale. The developer reserves the right to make revisions. 5. Calculation of suite area is measured as the area bounded by the centre line of demising or partition walls separating one unit from another unit, the exterior face of all exterior walls, and the exterior face of the corridor wall enclosing the adjoining unit. 6. Calculation of balcony area is measured as the area bounded by the centre line of demising or partition walls separating one unit from another unit, the outmost face of the enclosing guard and the external face of the adjoining balcony. 7. The units are measured at typical floor in the building. Columns may vary in size depending on the floor level. 8. For each unit type, unit sizes and details might be slightly different. Please refer to the sales and purchase agreement for the actual size of each specific unit.

Disclaimer: 1. All room dimensions are measured to structural elements and exclude wall finishes and construction tolerances. 2. All dimensions have been provided by our consultant architects. 3. All materials, dimensions and drawings are approximate. Information is subject to change without notice. 4. Actual suite area may vary from the stated area. Drawings not to scale. The developer reserves the right to make revisions. 5. Calculation of suite area is measured as the area bounded by the centre line of demising or partition walls separating one unit from another unit, the exterior face of all exterior walls, and the exterior face of the corridor wall enclosing the adjoining unit. 6. Calculation of balcony area is measured as the area bounded by the centre line of demising or partition walls separating one unit from another unit, the outmost face of the enclosing guard and the external face of the adjoining balcony. 7. The units are measured at typical floor in the building. Columns may vary in size depending on the floor level. 8. For each unit type, unit sizes and details might be slightly different. Please refer to the sales and purchase agreement for the actual size of each specific unit.



C3
TYPE

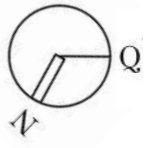
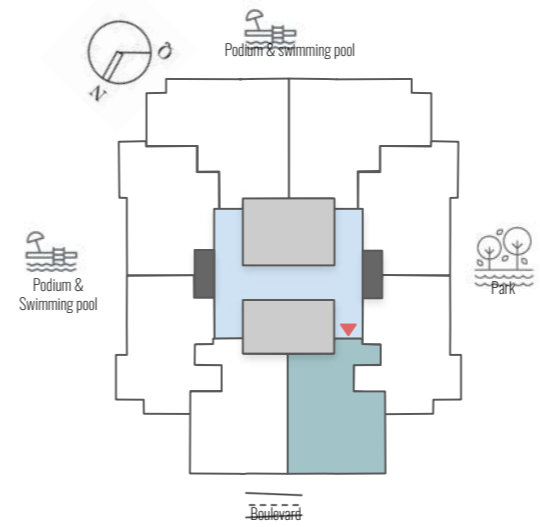
15
FLOOR

1503
UNIT

644
AREA sq.ft.
APT 548 + BAL 96

VIEW
PARK,
BOULEVARD

Disclaimer: 1. All room dimensions are measured to structural elements and exclude wall finishes and construction tolerances. 2. All dimensions have been provided by our consultant architects. 3. All materials, dimensions and drawings are approximate. Information is subject to change without notice. 4. Actual suite area may vary from the stated area. Drawings not to scale. The developer reserves the right to make revisions. 5. Calculation of suite area is measured as the area bounded by the centre line of demising or partition walls separating one unit from another unit, the exterior face of all exterior walls, and the exterior face of the corridor wall enclosing the adjoining unit. 6. Calculation of balcony area is measured as the area bounded by the centre line of demising or partition walls separating one unit from another unit, the outmost face of the enclosing guard and the external face of the adjoining balcony. 7. The units are measured at typical floor in the building. Columns may vary in size depending on the floor level. 8. For each unit type, unit sizes and details might be slightly different. Please refer to the sales and purchase agreement for the actual size of each specific unit.



C4
TYPE

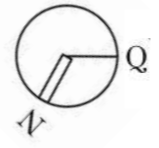
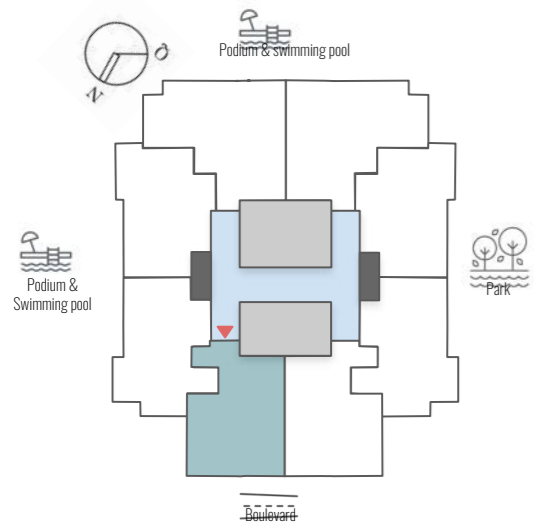
15
FLOOR

1504
UNIT

645
AREA sq.ft.
APT 570 + BAL 75

VIEW
PARK (PARTIAL),
BOULEVARD

Disclaimer: 1. All room dimensions are measured to structural elements and exclude wall finishes and construction tolerances. 2. All dimensions have been provided by our consultant architects. 3. All materials, dimensions and drawings are approximate. Information is subject to change without notice. 4. Actual suite area may vary from the stated area. Drawings not to scale. The developer reserves the right to make revisions. 5. Calculation of suite area is measured as the area bounded by the centre line of demising or partition walls separating one unit from another unit, the exterior face of all exterior walls, and the exterior face of the corridor wall enclosing the adjoining unit. 6. Calculation of balcony area is measured as the area bounded by the centre line of demising or partition walls separating one unit from another unit, the outmost face of the enclosing guard and the external face of the adjoining balcony. 7. The units are measured at typical floor in the building. Columns may vary in size depending on the floor level. 8. For each unit type, unit sizes and details might be slightly different. Please refer to the sales and purchase agreement for the actual size of each specific unit.



C5
TYPE

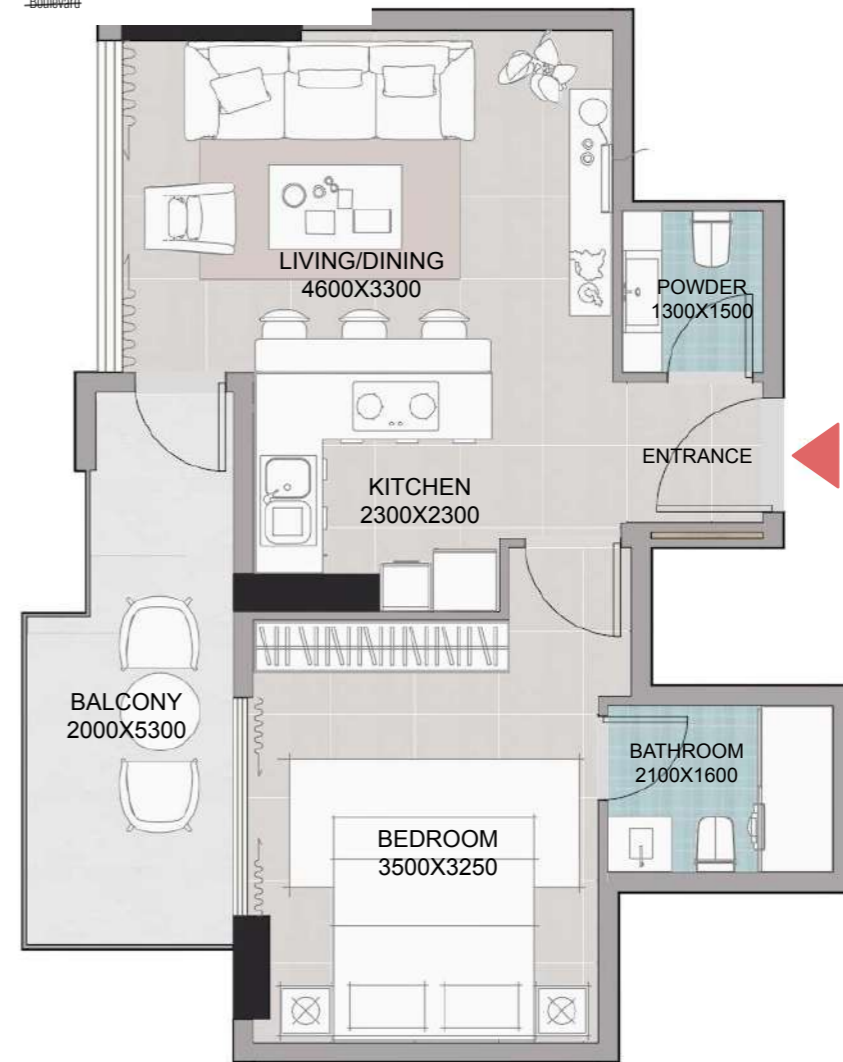
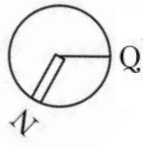
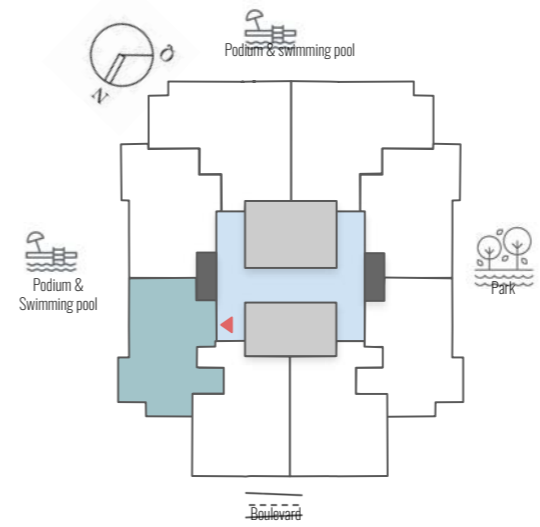
15
FLOOR

1505
UNIT

645
AREA sq.ft.
APT 570 + BAL 75

VIEW
BOULEVARD

Disclaimer: 1. All room dimensions are measured to structural elements and exclude wall finishes and construction tolerances. 2. All dimensions have been provided by our consultant architects. 3. All materials, dimensions and drawings are approximate. Information is subject to change without notice. 4. Actual suite area may vary from the stated area. Drawings not to scale. The developer reserves the right to make revisions. 5. Calculation of suite area is measured as the area bounded by the centre line of demising or partition walls separating one unit from another unit, the exterior face of all exterior walls, and the exterior face of the corridor wall enclosing the adjoining unit. 6. Calculation of balcony area is measured as the area bounded by the centre line of demising or partition walls separating one unit from another unit, the outmost face of the enclosing guard and the external face of the adjoining balcony. 7. The units are measured at typical floor in the building. Columns may vary in size depending on the floor level. 8. For each unit type, unit sizes and details might be slightly different. Please refer to the sales and purchase agreement for the actual size of each specific unit.



C6
TYPE

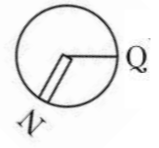
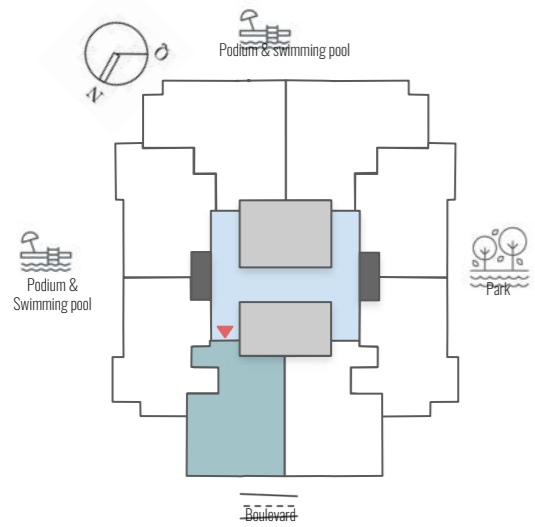
15
FLOOR

1506
UNIT

644
AREA sq.ft.
APT 548 + BAL 96

VIEW
PODIUM

Disclaimer: 1. All room dimensions are measured to structural elements and exclude wall finishes and construction tolerances. 2. All dimensions have been provided by our consultant architects. 3. All materials, dimensions and drawings are approximate. Information is subject to change without notice. 4. Actual suite area may vary from the stated area. Drawings not to scale. The developer reserves the right to make revisions. 5. Calculation of suite area is measured as the area bounded by the centre line of demising or partition walls separating one unit from another unit, the exterior face of all exterior walls, and the exterior face of the corridor wall enclosing the adjoining unit. 6. Calculation of balcony area is measured as the area bounded by the centre line of demising or partition walls separating one unit from another unit, the outmost face of the enclosing guard and the external face of the adjoining balcony. 7. The units are measured at typical floor in the building. Columns may vary in size depending on the floor level. 8. For each unit type, unit sizes and details might be slightly different. Please refer to the sales and purchase agreement for the actual size of each specific unit.



C7
TYPE

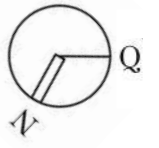
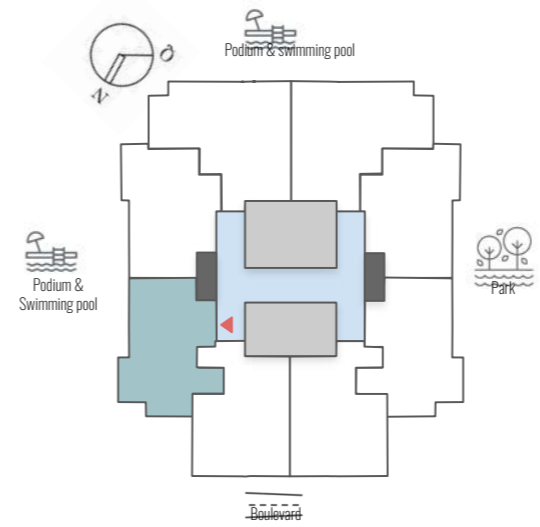
15
FLOOR

1507
UNIT

667
AREA sq.ft.
APT 549 + BAL.118

VIEW
PODIUM

Disclaimer: 1. All room dimensions are measured to structural elements and exclude wall finishes and construction tolerances. 2. All dimensions have been provided by our consultant architects. 3. All materials, dimensions and drawings are approximate. Information is subject to change without notice. 4. Actual suite area may vary from the stated area. Drawings not to scale. The developer reserves the right to make revisions. 5. Calculation of suite area is measured as the area bounded by the centre line of demising or partition walls separating one unit from another unit, the exterior face of all exterior walls, and the exterior face of the corridor wall enclosing the adjoining unit. 6. Calculation of balcony area is measured as the area bounded by the centre line of demising or partition walls separating one unit from another unit, the outmost face of the enclosing guard and the external face of the adjoining balcony. 7. The units are measured at typical floor in the building. Columns may vary in size depending on the floor level. 8. For each unit type, unit sizes and details might be slightly different. Please refer to the sales and purchase agreement for the actual size of each specific unit.



C8
TYPE

15
FLOOR

1508
UNIT

785
AREA sq.ft.
APT 678 + BAL.107

VIEW
PODIUM

Disclaimer: 1. All room dimensions are measured to structural elements and exclude wall finishes and construction tolerances. 2. All dimensions have been provided by our consultant architects. 3. All materials, dimensions and drawings are approximate. Information is subject to change without notice. 4. Actual suite area may vary from the stated area. Drawings not to scale. The developer reserves the right to make revisions. 5. Calculation of suite area is measured as the area bounded by the centre line of demising or partition walls separating one unit from another unit, the exterior face of all exterior walls, and the exterior face of the corridor wall enclosing the adjoining unit. 6. Calculation of balcony area is measured as the area bounded by the centre line of demising or partition walls separating one unit from another unit, the outmost face of the enclosing guard and the external face of the adjoining balcony. 7. The units are measured at typical floor in the building. Columns may vary in size depending on the floor level. 8. For each unit type, unit sizes and details might be slightly different. Please refer to the sales and purchase agreement for the actual size of each specific unit.



A PROJECT BY

METEORA

DEVELOPERS

www.meteoradevelopers.com

