



DUBAI

**JUMEIRAH LAKES TOWERS
THE RESIDENCES**

**ARE YOU
READY?**

HAVE YOU HEARD?

**THE ORIGINAL LIFESTYLE HOSPITALITY BRAND HAS FOUND
A HOME IN W RESIDENCES DUBAI - JUMEIRAH LAKES TOWERS.**

This is where the world-renowned W energy meets elevated living. Born from the vibrant spirit of New York City, The Residences offer the same 24/7 pulse found in iconic W destinations across the globe.

Get ready for a curated lifestyle that seamlessly blends music, fashion, design, and culinary artistry
- all within the comfort of your own home.





THE SECRET'S OUT

CHANGE TO THE EXTRAORDINARY

Extraordinary is a state of mind. Imagine having a permanent behind-the-scenes pass to the cutting-edge, exciting and new, with your own personal retreat just steps away for relaxation.

Come for the stylised residential living, global resonance and magnetism. Stay for the bold attitude that isn't afraid to celebrate individuality while challenging the norms of life and nature around us.





**DYNAMIC.
SPACIOUS.
STYLISH.**

**THE BEACON WHERE FASHION MEETS
FINESSE AND MUSIC MEETS MUSE.**

Welcome to W living - where every day is an invitation to redefine the extraordinary.

THE LAW OF MAGNETISM

The Residences effortlessly embodies the law of magnetism, drawing in the most discerning individuals with its unmatched blend of luxury, lifestyle and location. These residences fuse bold design, with the brand's signature sophistication creating a living experience that captivates and attracts global trendsetters.





BREATHTAKING ARCHITECTURE BY MAD ARCHITECTS

Under the visionary leadership of Ma Yansong, MAD Architects continues to push the boundary of design, redefining urban landscapes with an organic, futuristic aesthetic. MAD's projects evoke a sense of harmony between the built environment and the natural world, making MAD Architects a global leader in contemporary design.





DESIGN MEETS VIEWS

As you ascend through this innovative space, each floor reveals panoramic views that capture the essence of Dubai's dynamic cityscape and the serene waters below, offering a sensory journey unlike any other.

Gaze out from the expansive windows and behold the majestic JLT skyline, a testament to Dubai's towering architectural marvels that punctuate the horizon with their sleek silhouettes.

Witness the elegance of Emirates Hills, Meadows, Lakes, and Jumeirah Islands, where luxury residences blend seamlessly with lush greenery, creating an oasis of serenity amidst the bustling cityscape.

Indulge in privileged views of the renowned Emirates Golf Course and the Montgomerie, where verdant fairways and shimmering lakes beckon.





BRIGHT LIGHTS, BRIGHT CITY

Step into the JLT lifestyle, where every corner leads you to walkable community living. Explore a plethora of dining options, from global culinary delights to local favourites, all nestled within the soaring skyscrapers of the district. Here you'll find yourself immersed in a melting pot of cultures, where work, leisure and relaxation seamless blend together.



BREATHING LIFE INTO THE CITY

Enjoy proximity to iconic landmarks such as the Marina, Palm Jumeirah, and Emirates Hills, where retail therapy, golfing, shopping, and leisure activities await. The promise of a desirable work-live-play environment within walking distance is on the horizon. Strategically located with direct access to main routes, including our own access to the ring road, navigating in and out of JLT is a breeze - no need to circle around, just seamless connectivity at your fingertips.



STEP UP, STEP INSIDE

Come inside and you'll discover a world where expected excellence meets unexpected playfulness in design. From the premium materials meticulously curated to the considered attention to detail in every interior finishing, craftsmanship reigns supreme. The Residences are designed with spaciousness in mind, providing ample room to live, work, and play.



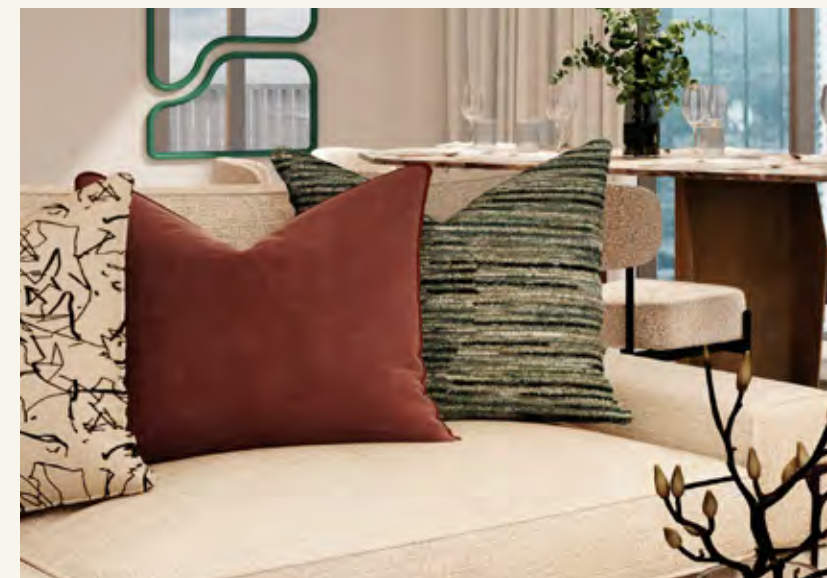




LIVING

The interiors, crafted by the renowned LW Design, exude modern elegance with thoughtfully curated features.

The living rooms feature high ceilings, creating a sense of openness and grandeur, while floor-to-ceiling double-glazed vision panels allow for abundant natural light and uninterrupted views. Private balconies offer a seamless indoor-outdoor living experience. The floors are adorned with patterned tiles, adding both texture and sophistication to the space. A blend of premium materials and open, airy design creates a warm ambiance, perfect for both relaxation and entertaining.





DINING

As part of the W philosophy, scale is manipulated to create juxtapositions that elevate the overall experience. Each detail is intentional, with colour used as a material to evoke emotions and create a sense of vibrancy.



Kitchen

KITCHEN

The kitchens are a perfect blend of style and functionality, featuring stoneware countertops that add a timeless elegance. Custom made cabinetry finished in sleek oak veneer, complements the modern aesthetic while providing ample storage. Equipped with premium Smeg appliances, these kitchens are designed for both everyday convenience and gourmet cooking.





Master Bedroom



BEDROOM

The bedrooms offer a serene and inviting retreat, with soft tones herringbone patterned floors that evoke comfort and relaxation. Generously sized with large windows that allow natural light to flow in, the design blends elegance and functionality, making it a perfect sanctuary for rest and relaxation.



Master Bathroom

BATHROOM

Elegantly designed bathrooms combine modern luxury with serene minimalism. The sleek lines of the freestanding bathtub are perfectly complemented by the warm tones of the oak veneer cabinetry, with marble effect porcelain countertops. Spacious walk-in shower, matte black fixtures, and softly lit mirrors bring a sense of calm and openness. Herringbone-patterned flooring completes this delicate blend of flirty and functional.

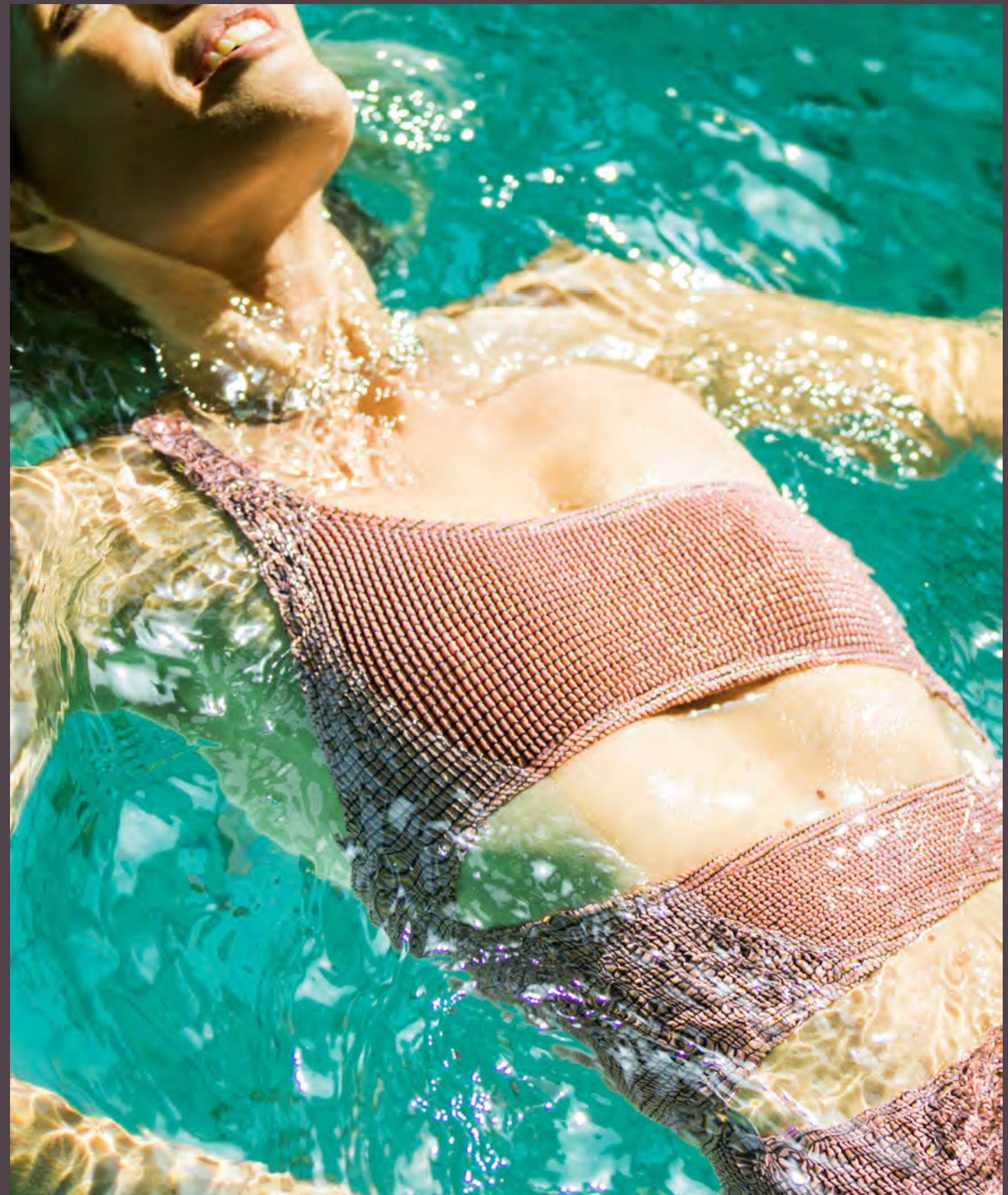




Private Balcony

MORE THAN YOU WANT, IS WHAT YOU NEED

Indulge in an unparalleled array of top-notch amenities at W Residences Dubai - Jumeirah Lakes Towers, designed to foster community ties, ignite creative energy and cater to your every desire.
A world of endless possibilities is available 24/7 - Whatever/Whenever® Service.



WHATEVER, WHENEVER®

Be welcomed into a seamless arrival experience with Whatever/Whenever® concierge service. Step into luxury as you enter the double-height W Living Room, designed to provide a grand arrival experience that sets the tone for elevated living.



W Living Room



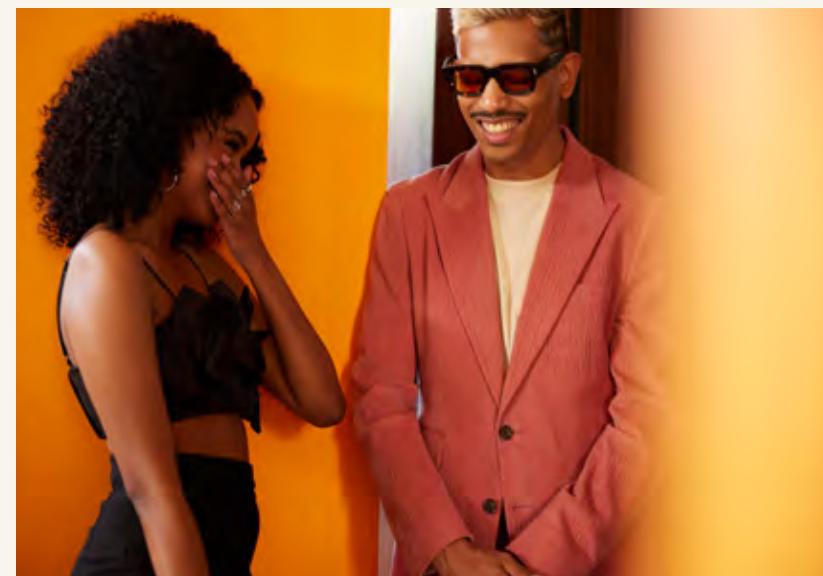
W Living Room



W Living Room

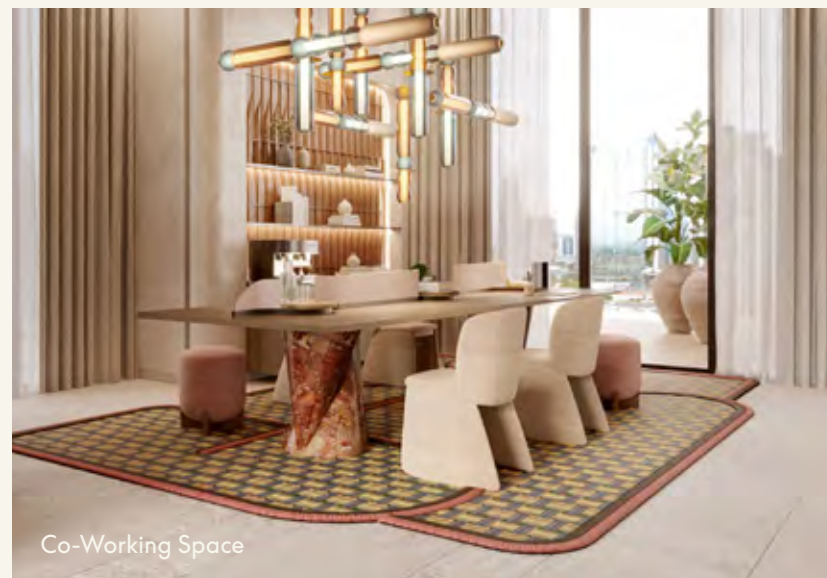
W LIVING ROOM

The heart of the W community lies in the Living Room, a dynamic gathering spot where residents and invited guests come together to connect and collaborate. By day, it serves as a neighbourhood creative hub, while by night, it transforms into a lively social hotspot buzzing with energy.





Residence Lounge / Games Room



Co-Working Space

WORK HARD, PLAY HARD

Indulge in recreation and entertainment at the Residence Lounge, Games Room, and Sound Suite, where residents can unwind with a variety of leisure activities.



FIT Gym

SWEAT IT OUT

Reach your peak in the fully-equipped FIT Gym, find your flow in the FIT Yoga and Pilates Studio, and unwind in the luxurious changing rooms complete with rejuvenating sauna and steam facilities. For the ultimate indulgence, book a tranquil Treatment Room if you're in the mood for a massage.



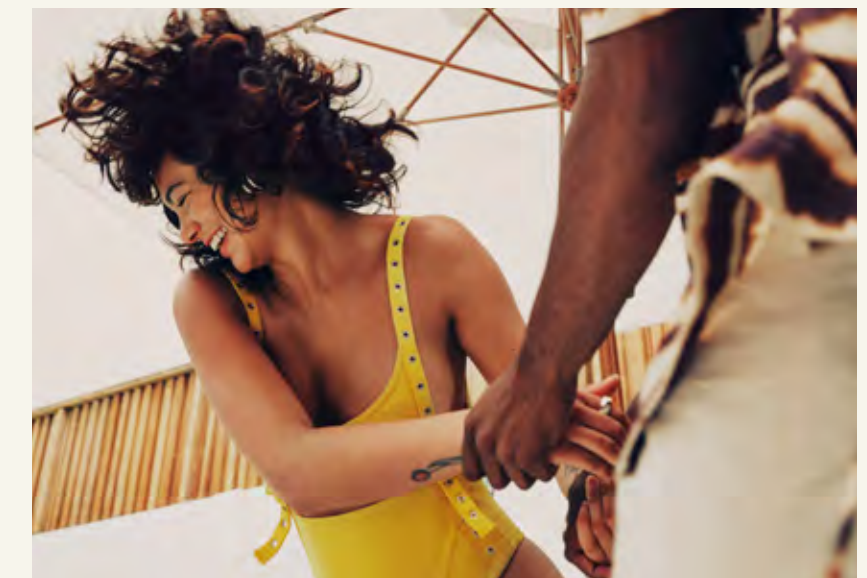
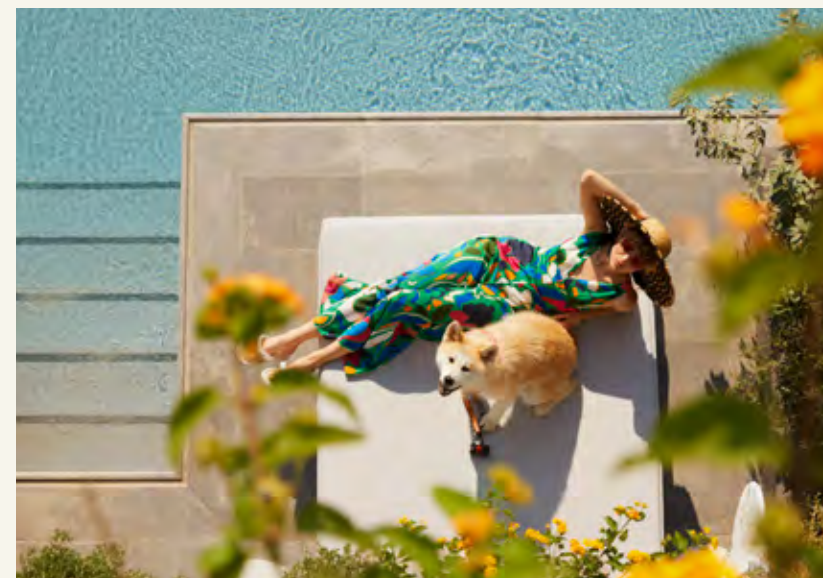
Wellness





WHEN IN WET® DECK

Escape to the WET® Deck, featuring an in-pool Jacuzzi and shallow deck with day beds, perfect for lounging and soaking up the sun. Celebrate special occasions in style with private events and DJ sets (subject to availability).





BBQ Pods & Kids Play Area



BETTER TOGETHER

Experience the pinnacle of outdoor living at W Residences Dubai - Jumeirah Lakes Towers where landscaped terraces, BBQ PODS and intimate seating areas offer the perfect setting for relaxation or socialising.

GROUND FLOOR AMENITIES

- | | | | |
|---|----------------|---|----------------------------------|
| 1 | Valet Drop-Off | 4 | W Living Room |
| 2 | Welcome Zone | 5 | Music Corner |
| 3 | Coffee Bar | 6 | Flexible & Private Meeting Rooms |



AMENITY FLOOR

- | | | | |
|----|-----------------------------|----|----------------------------------|
| 1 | WET® Deck | 12 | Male Changing Rooms |
| 2 | WET® Deck Day Beds | 13 | Female Changing Rooms |
| 3 | WET® Deck Jacuzzi | 14 | Sauna and Steam Rooms |
| 4 | Outdoor Co-Working Zone | 15 | Residence Lounge |
| 5 | Kids and Teens Area | 16 | Games Room |
| 6 | Barbecue Pods | 17 | Multi-Purpose Space |
| 7 | Outdoor Fitness Area | 18 | Exhibition Kitchen |
| 8 | FIT Ice Pods | 19 | Zoom Rooms |
| 9 | FIT Gym | 20 | Flexible & Private Meeting Rooms |
| 10 | FIT Yoga and Pilates Studio | 21 | Screening Room |
| 11 | Treatment Room | 22 | Sound Suite |





JUST ASK AND CONSIDER IT DONE

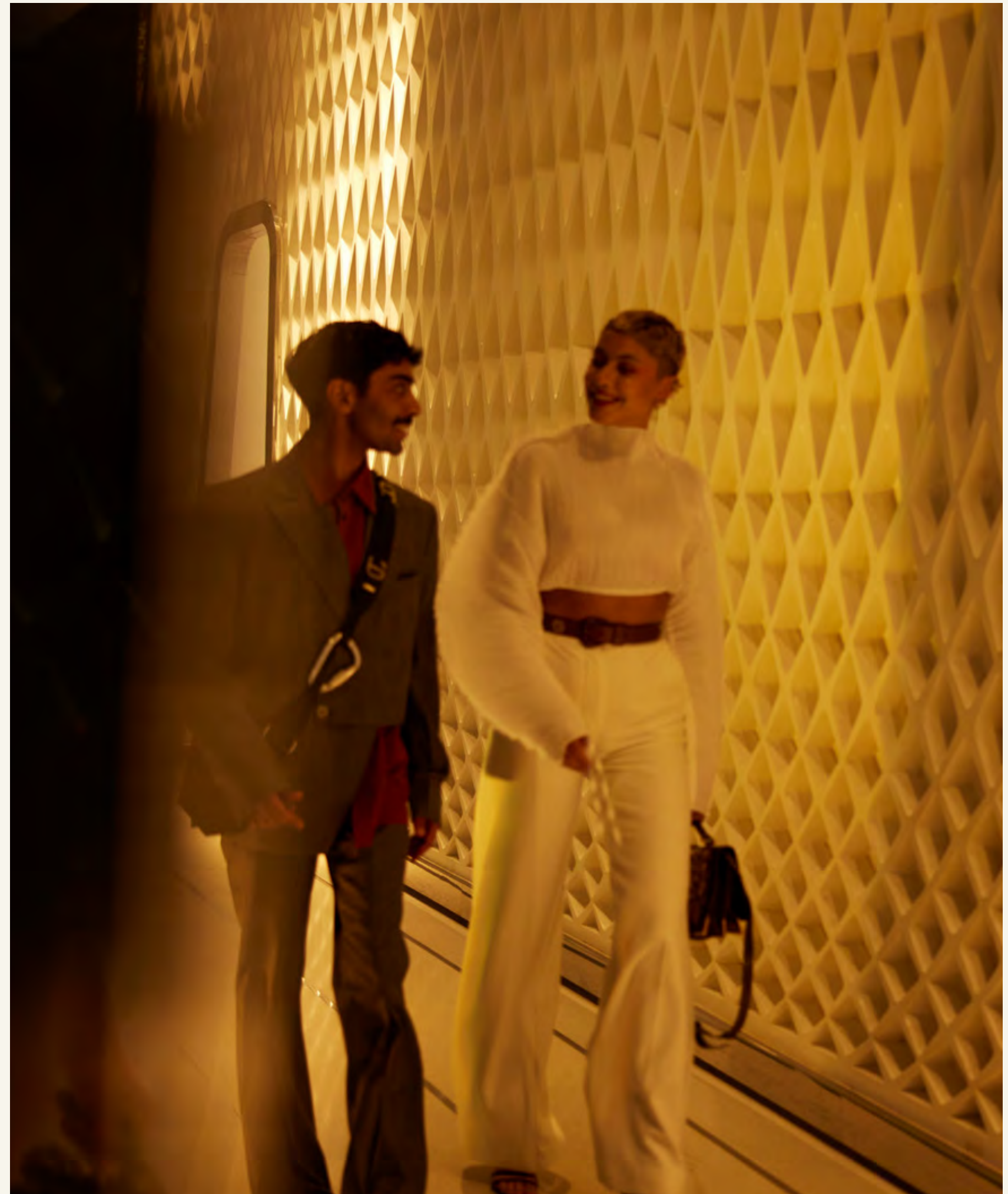
No request is too big, no detail too small. Whether you need housekeeping, hairdressing, a refreshing drink, or that perfect table on short notice, our Whatever/Whenever® service is ready to make it happen. Just ask, and we'll deliver.

- Airline/Private Air Reservations
- Shopping Information
- Airport/Ground Transportation Arrangements
- Ordering Floral Arrangements
- Activity Arrangements
- Coordinate Delivery Services
- Automobile Rental Reservations
- Limousine/Car Service Reservations
- Trash Removal
- Hotel and Guest Suite Reservations
- Reserving Golf Tee Times
- Restaurant Information/ Reservations
- Tour Information & Reservations
- Spa & Salon Reservations
- Move-in Coordination
- Valet Parking
- Pet Care/Kennel Information
- 24/7 Security
- Theatre & Entertainment Information
- Doorman/Porter Services
- Common Area Housekeeping
- Common Area Maintenance
- Package Delivery

A LA CARTE

À la carte services may be provided to residences as part of our Whenever/Wherever® Concierge Services, and are typically provided and coordinated by third parties not affiliated with W Residences.

- Housekeeping Services
- Grocery Shopping
- Laundry/Dry Cleaning
- Alterations Services
- Travel & Vacation Planning
- In-Residence Dining/Catering
- Personal Chef Services
- Personal Trainer
- In-home Spa Treatments/ Services
- Nanny/Child Care Services





ONVIA

An Exclusive Platform for The Residences Owners

DESIGNED FOR LIFE

The Residences offer a lifestyle experience that goes well beyond what you've ever imagined. Rooted in the fine art of hospitality, ONVIA provides a unique point of view on residential living, amenities, experiences, and more – each one designed to take you beyond your imagination.

- Elevated Marriott Bonvoy™ status for Residence Owners
- Preferred Residence Owner rates for select hotels within the global Marriott Bonvoy™ portfolio
- Special offerings and preferred access on voyages with The Ritz-Carlton Yacht Collection
- Exclusive offers on culinary experiences when at home and within the local community
- A focus on wellness, including spa and treatment offerings
- Access to a world-class accredited concierge service

SEAMLESS CONNECTIVITY

2

minutes from
Sheikh Zayed Road

4

minutes from
nearby Metro Station

7

minutes from
Dubai Marina Mall

9

minutes from
Dubai Marina, JBR, Bluewaters

10

minutes from
Ibn Battuta Mall

14

minutes from
Mall of the Emirates

20

minutes from
Dubai Mall

30

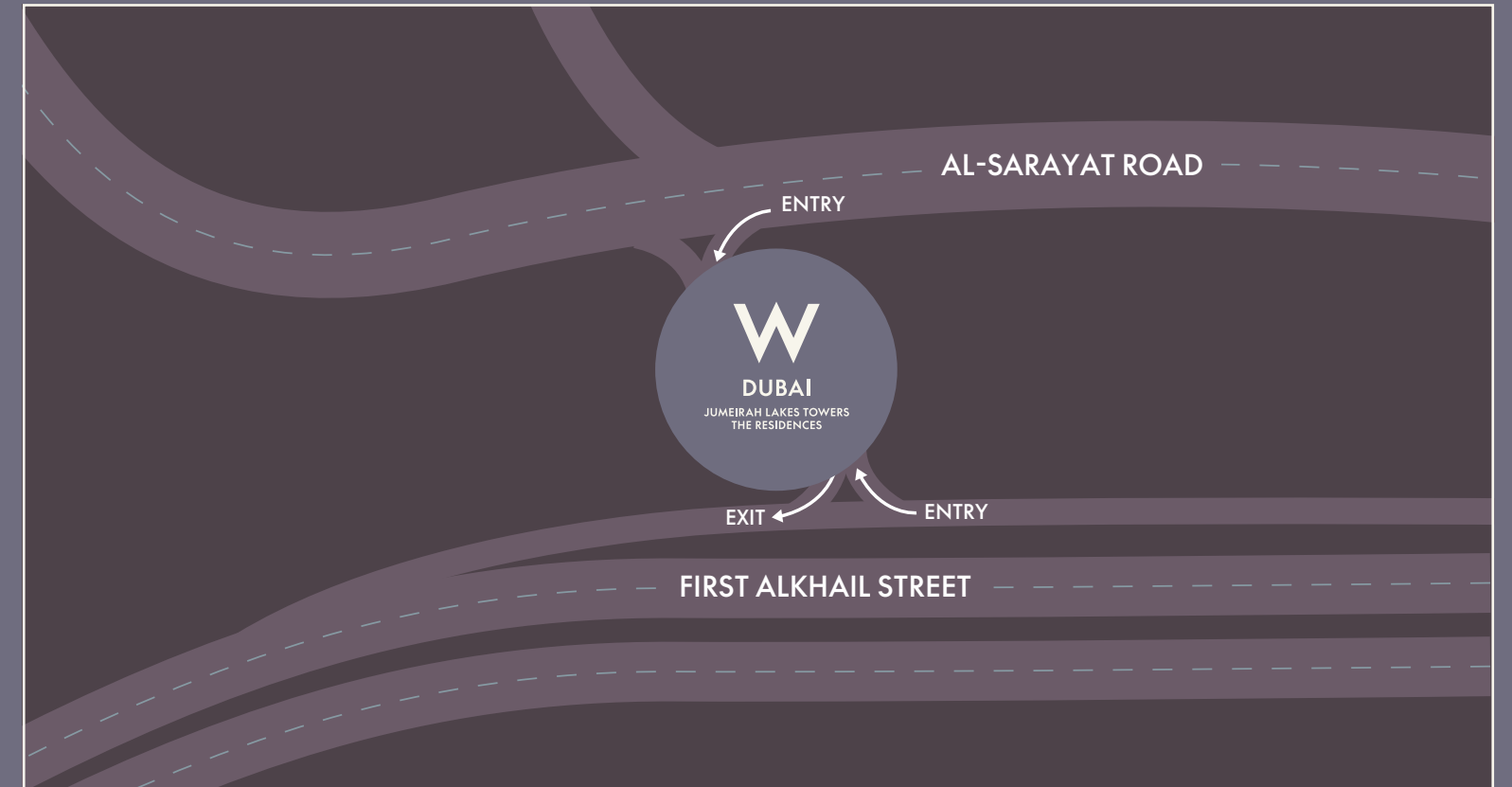
minutes from
Al Maktoum International Airport

30

minutes from
Dubai International Airport

W Residences Dubai - Jumeirah Lakes Towers places you at the heart of JLT's vibrant lifestyle. Diverse restaurants, iconic landmarks like Dubai Marina, Palm Jumeirah, JBR and Bluewaters are all just steps away. With convenient access to major routes, exploring the wider city is effortless.

Whether it's a quick trip to the beach or a night out downtown, your adventures start the moment you step out the door.



THE MAGIC MAKERS

From visionary developers to renowned architects, project managers, designers, sales professionals and marketers, every aspect of the W Residences Dubai - Jumeirah Lakes Towers experience is curated by the best in the industry.





A TRAIL OF LUXURY TRADEMARKS

Signature Developers is a pioneering Dubai-based development company with a rich legacy of innovation and exceptional quality. Their commitment to luxury, diligence, and growth shines through in every project they undertake.

W Residences Dubai - Jumeirah Lakes Towers is a testament to Signature Developers' visionary leadership, redefining opulent living. Each facet is meticulously curated to surpass expectations, ensuring W Residences Dubai - Jumeirah Lakes Towers stands as a pinnacle of contemporary living, showcasing unparalleled craftsmanship and sophistication.

Signature Developers' portfolio boasts other remarkable projects:

Signature Mansions, Jumeirah Golf Estates:

A limited-edition residential enclave blending community living and private seclusion, featuring 19 villas that harmoniously combine community, serenity, and architectural beauty.

The Residences, JLT:

A celebration of timeless aesthetics, offering carefully designed havens of privacy. These residences strike a balance between modern technology and timeless grace, characterised by thoughtful details, flowing design, and a calming palette that fosters a profound sense of comfort and belonging.

The 118, Downtown:

A unique collection of 28 residences, each occupying an entire floor, including two iconic duplex penthouses. Situated near prestigious five-star establishments and a short walk from The Dubai Mall, The 118 provides easy access to the city while offering a peaceful escape high above.



THE PARTNERS

mad

MAD Architects is a visionary design firm known for its innovative and organic approach to architecture. Founded by Ma Yansong, the studio emphasizes harmony between nature and urban life, creating iconic structures that challenge conventional aesthetics and promote sustainable living. Their projects often feature fluid forms and immersive environments, redefining the landscape of modern architecture.

SHUAA

SHUAA is a dynamic development manager specializing in creating transformative real estate projects. With a keen focus on innovation and sustainability, SHUAA expertly navigates the development process from concept to completion. Their dedicated team collaborates with stakeholders to ensure each project not only meets market demands but also enhances community value. Committed to excellence, SHUAA is shaping the future of real estate development with a strategic vision and a passion for quality.

LW

LW Design is a leading architectural and design firm celebrated for its innovative and timeless solutions across various sectors. With a commitment to creativity and functionality, the team at LW Design collaborates closely with clients to bring their visions to life, crafting spaces that inspire and elevate experiences. Renowned for their attention to detail and a deep understanding of market trends, LW Design seamlessly blends aesthetic appeal with practicality, making a lasting impact in the world of design.

mirage

Mirage is a leading international consultancy with over 25 years of experience in development management, project management, multi-disciplinary design, and cost consultancy. Founded in 1997 in Dubai, Mirage have successfully completed over 100 leisure and mixed-use developments across the Middle East, Africa, and beyond, covering 6.4 million m² with an estimated value of \$14 billion.

DEVMARK

Established as the UAE's most experienced development marketing & sales consultancy, Devmark specialises in partnering with developers to expedite the sale of their projects and maximise their return on investment. Led by Sean McCauley, CEO & Richard Aybar, Managing Director, Devmark leverages extensive market knowledge, a developer-centric approach, and integrated sales and marketing processes to drive success for their clients.

Freedm

Freedm is a global, award-winning, creative agency. With an international expert team, Freedm represents a diverse collective of creative and strategic specialists who provide real estate developers with marketing and creative strategy, that translates into powerful return on investment.

