



# WADI

VILLAS

BY ARISTA PROPERTIES  
DISTRICT 11 MEYDAN



ARISTA  
PROPERTIES



ARISTA PROPERTIES

*Excellence* in crafting environments  
that elevate and redefine the experience of distinctive living.



WADI  
VILLAS

BY ARISTA PROPERTIES  
DISTRICT 11 MEYDAN

WADI  
VILLAS

BY ARISTA PROPERTIES  
DISTRICT 11 MEYDAN

ARISTA PROPERTIES

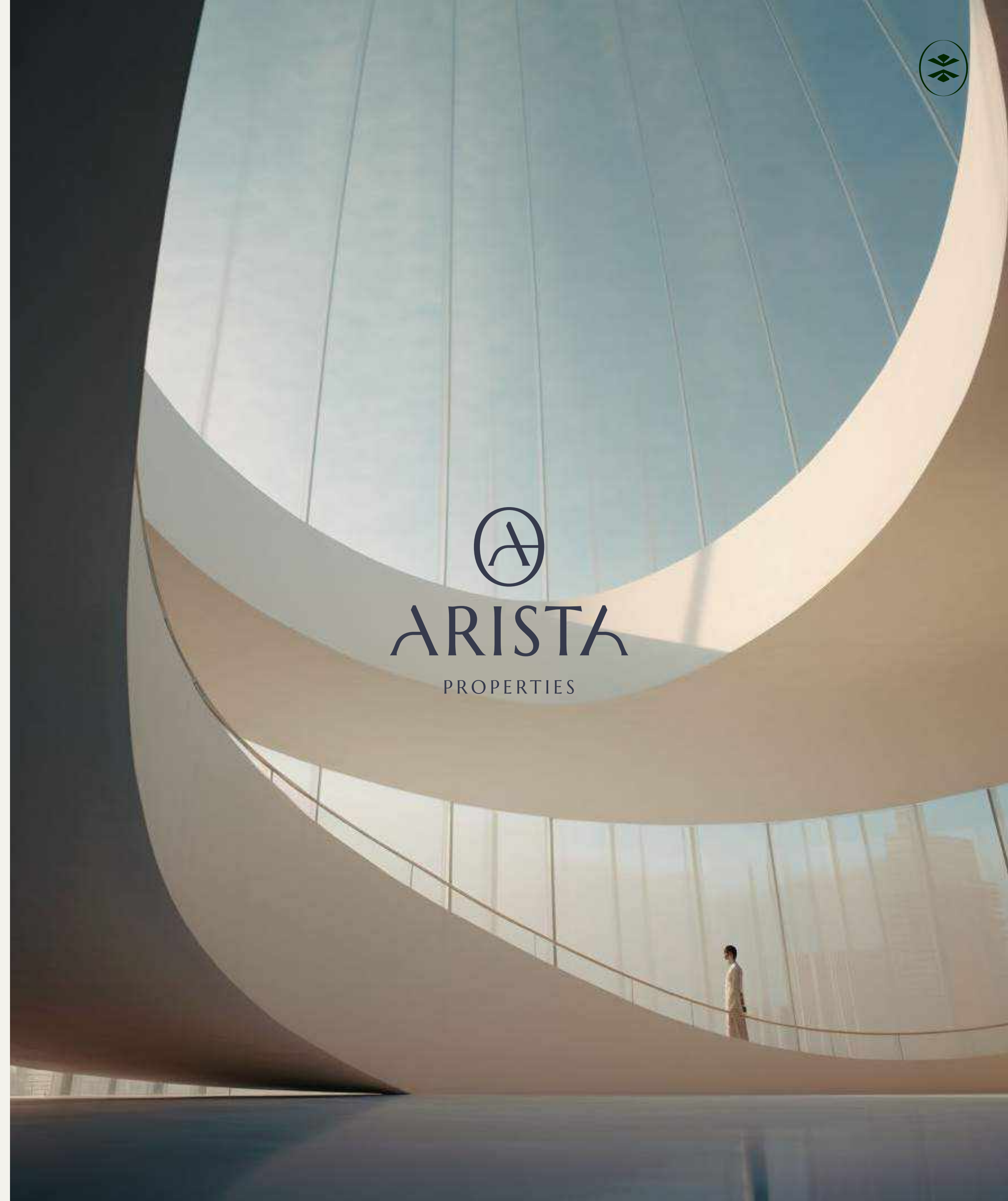
REDEFINING INNOVATION

Arista Properties is poised to cater to the nuanced residents who desire for the extraordinary.

Upholding an exceptional standard of quality, Arista Properties' residences are set to be an exquisite blend of premium finishes, functional floor layout, and innovative solutions. Each residence a testament to the art of value-based aesthetics seamlessly integrated with the science of efficient engineering.



  
ARISTA  
PROPERTIES





## INTRODUCTION

In the heart of Dubai's unique landscape an oasis beckons, offering a rare opportunity to reside where water flows through the landscape connecting you to the essence of life.

A vibrant, residential enclave where luxury, nature, and a distinguished community converge, offering a rejuvenating living experience in a class of its own, in the midst of one of the world's most vibrant cities. Where every sense is revered and embraced by architecture that harmonises seamlessly with the environment.

Be part of this journey redefining the concept of luxury living.

WADI

VILLAS

BY ARISTA PROPERTIES  
DISTRICT 11 MEYDAN



LOCATION

Coveted by many, *owned* by few.



WADI  
VILLAS

BY ARISTA PROPERTIES  
DISTRICT 11 MEYDAN



LOCATION



WILDLIFE SANCTUARY  
12 minutes away

BUSINESS BAY  
15 minutes away

DUBAI INTERNATIONAL AIRPORT  
20 minutes away

BURJ KHALIFA  
20 minutes away

DUBAI WORLD TRADE CENTRE  
20 minutes away

JUMEIRAH BEACH  
20 minutes away



**WADI**  
VILLAS  
BY ARISTA PROPERTIES  
DISTRICT 11 MEYDAN

**SCHOOLS**

- 1. LLFPM
- 2. British Orchard Nursery - Liwan (DSO)
- 3. Mazaya 25
- 4. Zayed University UAE
- 5. The Indian International School, DSO
- 6. GEMS Wellington Academy
- 7. Arabian Kids Academy
- 8. Khalfan Bin Kharbash Quran School
- 9. Dubai Schools Nad Al Sheba
- 10. Fifth Dimension Elementary School
- 11. Repton School Dubai
- 12. International School of Creative Science - Nad Al Sheba
- 13. American School of Creative Science - Nad Al Sheba
- 14. Kings' School Nad Al Sheba
- 15. GEMS Modern Academy
- 16. Yellow Frames Art Studio

**MALLS**

- 17. Aswaaq Mall - Nad Al Sheba
- 18. Silicon Central Mall
- 19. Avenue Mall - Nad Al Shiba
- 20. The Arch Mall

**FITNESS**

- 21. Football Field
- 22. Fitness First Dubai Silicon Oasis
- 23. District GYM
- 24. GEMS Modern Academy Athletics Field & Football Playground

 PARKS

 MOSQUES



VILLAS

Iconic homes *nestled* amidst nature.



WADI  
VILLAS

BY ARISTA PROPERTIES  
DISTRICT 11 MEYDAN

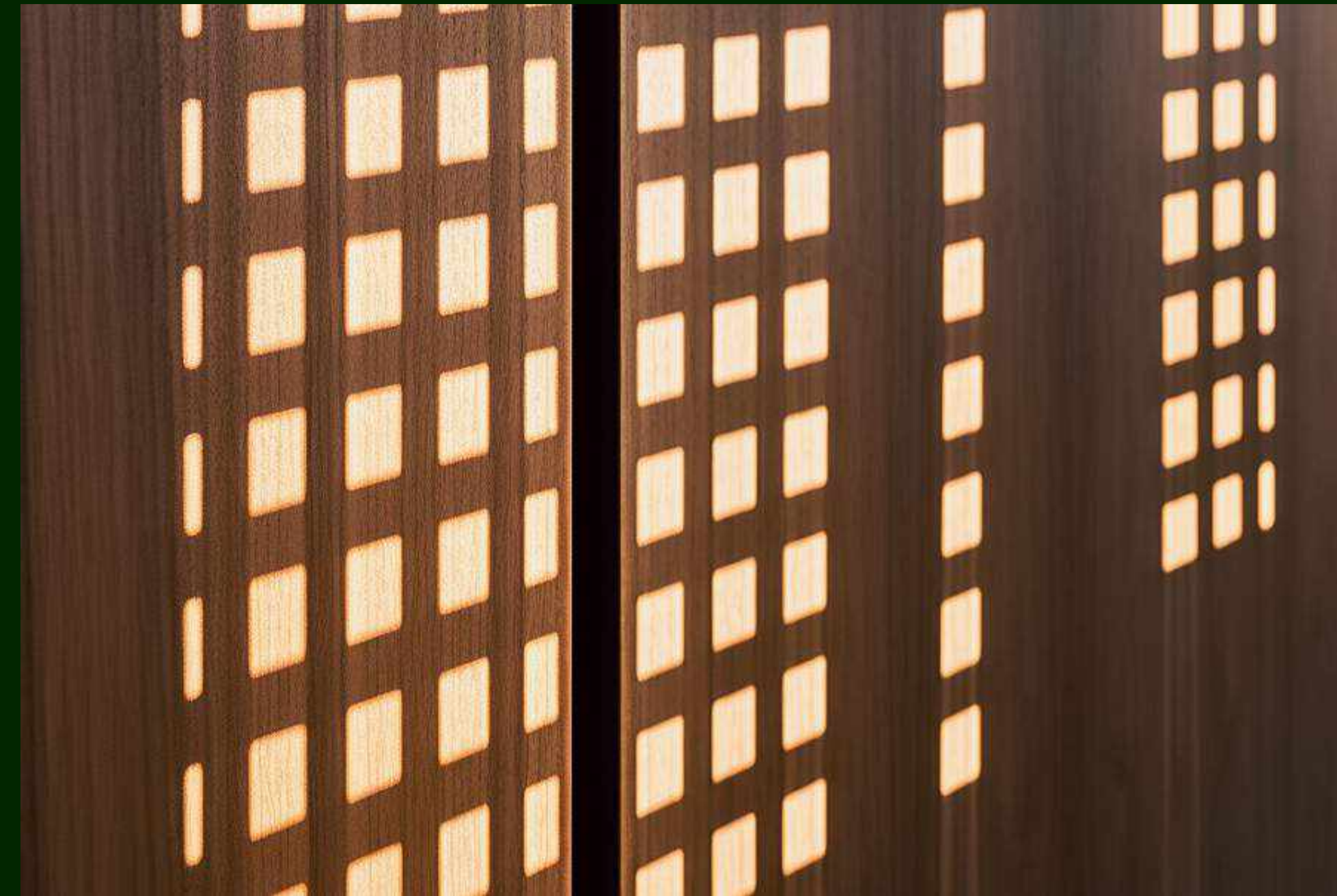


4

FOUR BEDROOM VILLAS

Nestled amidst the serene landscape, indulge in the extraordinary; surrounded by the ultimate in comfort and style.

With its sleek, modern architecture that seamlessly blends with the tranquil oasis setting, 4 bedroom villas are an intimate living experience for those who desire modernity and liveability. Elegant curves are subtly integrated into a contemporary design adding an element of softness and fluidity to create a modern, welcoming appearance.



# WADI VILLAS

By ARISTA PROPERTIES  
DISTRICT 11 MEYDAN

FOUR BEDROOM VILLAS



# WADI VILLAS

By ARISTA PROPERTIES  
DISTRICT 11 MEYDAN

FOUR BEDROOM VILLAS



WADI

VILLAS

BY ARISTA PROPERTIES  
DISTRICT 11 MEYDAN



Stepping into the stunning double height entrance, the breathtaking impact and sense of pristine environment from the generous use of glass sets a majestic tone.

#### ADMIRE THE SCULPTURED GRACE

A sweeping spiral staircase serves as a sculptural centrepiece and modern lighting fixtures add a warm and welcoming glow, beckoning residents and guests into the heart of this exquisite home. Light colours accentuated with dark finishings create sophisticated elegance underscored by the use superior materials and craftsmanship.

WADI  
VILLAS

BY AUSTIN PROPERTIES  
DISTRICT OF MEYDAN



# WADI VILLAS

BY ARISTA PROPERTIES  
DISTRICT 11 MEYDAN



FOUR BEDROOM VILLAS



# WADI VILLAS

BY ARISTA PROPERTIES  
DISTRICT 11 MEYDAN

FOUR BEDROOM VILLAS







# 4 Bedroom Villa

## GROUND FLOOR

TOTAL AREA

**3,645** SQ.FT

APPROX



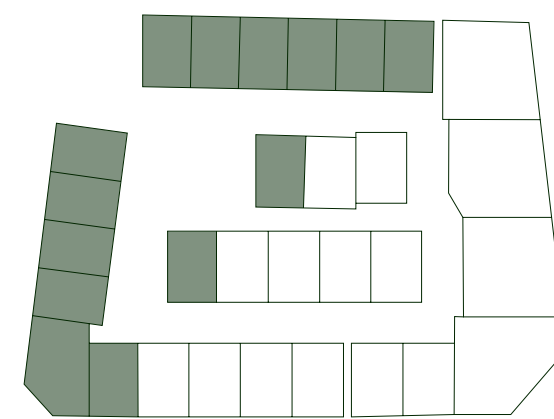
TOTAL BUILT UP AREA

**6,545** SQ.FT

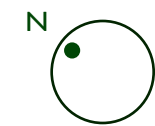
APPROX

DISCLAIMER: All measurements, dimensions, coordinates and drawings, given as the Floor Plans in the literature are approximate and provided only for the purpose of marketing, illustration, information and general guidance as such drawings are not to scale. All the rooms, sizes, locations, orientations, dimensions, fixtures, fittings, finishes and specifications (including materials for, placement, size of rooms, windows, doors, balcony, furniture's inbuilt wardrobe etc.) provided in the floor plans may vary as the same have been taken from concept designs prior the actual development/construction and therefore their accuracy in relation to actual construction cannot be confirmed. Hence, we make no guarantee, warranty or representation as to the accuracy and completeness of the floor plan information as changes may be made during the development process, without notice. Always refer to latest IFC design available in the sales office for the most accurate representation of all construction details.

FOUR BEDROOM VILLAS



KEY PLAN



# 4 Bedroom Villa

## FIRST FLOOR

TOTAL AREA

**2,095** SQ.FT

APPROX



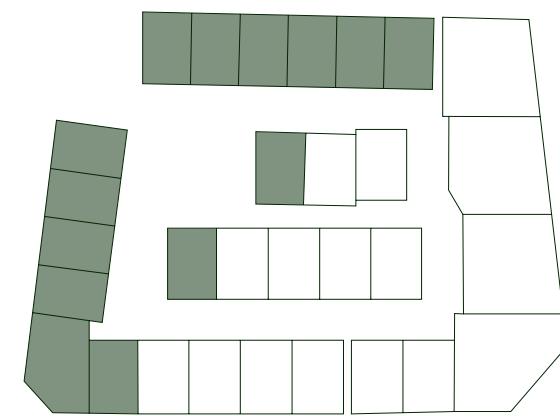
TOTAL BUILT UP AREA

**6,545** SQ.FT

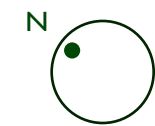
APPROX

FOUR BEDROOM VILLAS

DISCLAIMER: All measurements, dimensions, coordinates and drawings, given as the Floor Plans in the literature are approximate and provided only for the purpose of marketing, illustration, information and general guidance as such drawings are not to scale. All the rooms, sizes, locations, orientations, dimensions, fixtures, fittings, finishes and specifications (including materials for, placement, size of rooms, windows, doors, balcony, furniture's inbuilt wardrobe etc.) provided in the floor plans may vary as the same have been taken from concept designs prior the actual development/construction and therefore their accuracy in relation to actual construction cannot be confirmed. Hence, we make no guarantee, warranty or representation as to the accuracy and completeness of the floor plan information as changes may be made during the development process, without notice. Always refer to latest IFC design available in the sales office for the most accurate representation of all construction details.



KEY PLAN



## 4 Bedroom Villa

### SECOND FLOOR

TOTAL AREA

**805** SQ.FT

APPROX



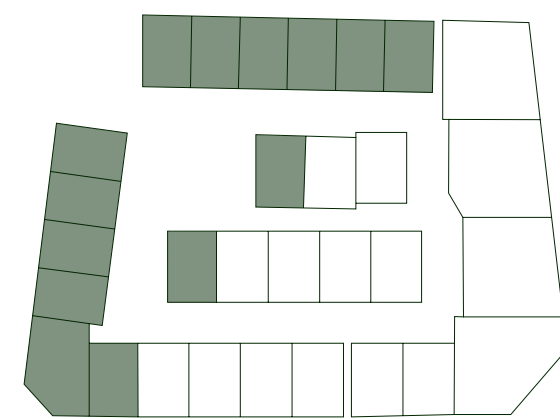
TOTAL BUILT UP AREA

**6,545** SQ.FT

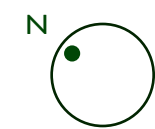
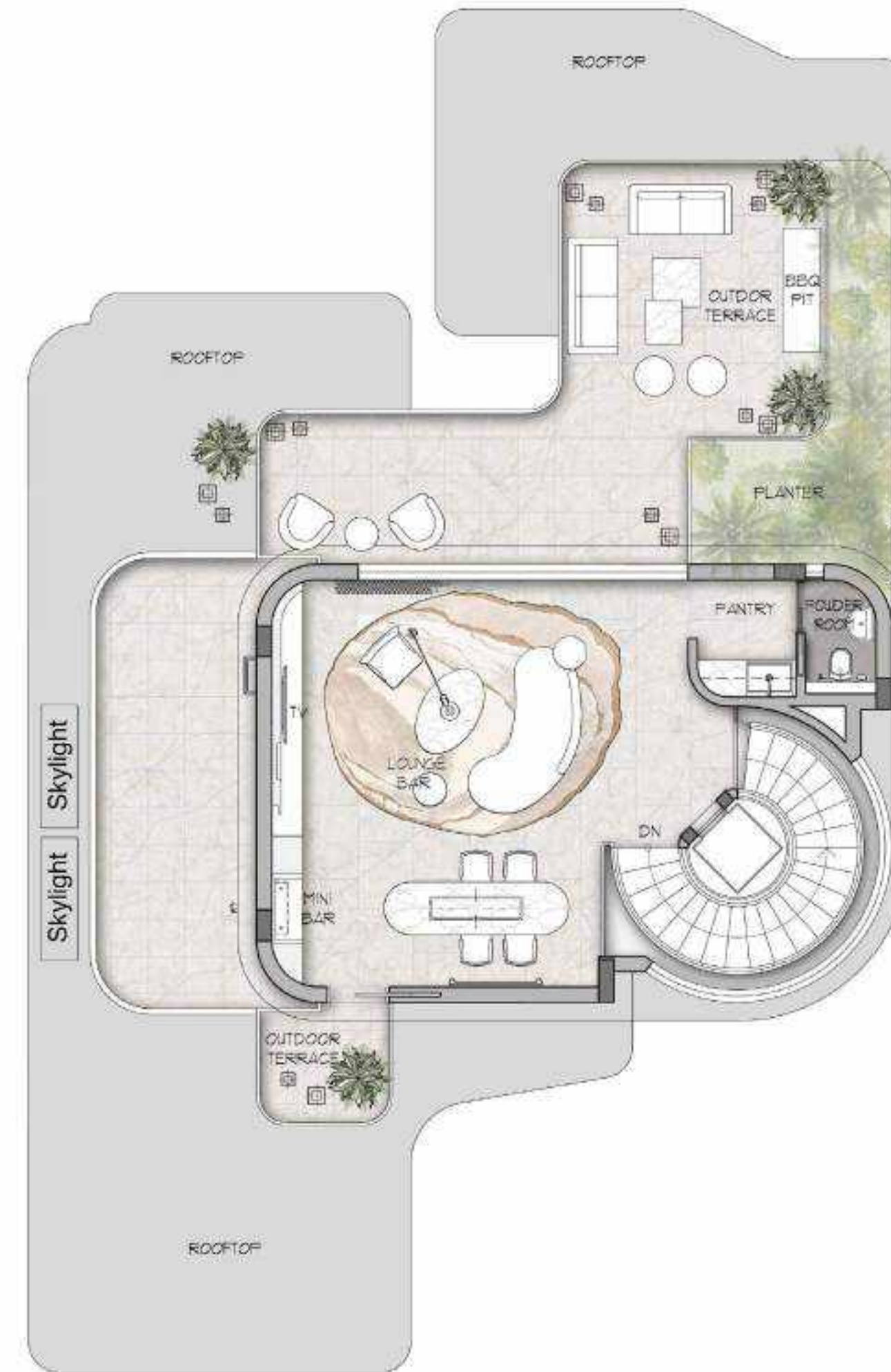
APPROX

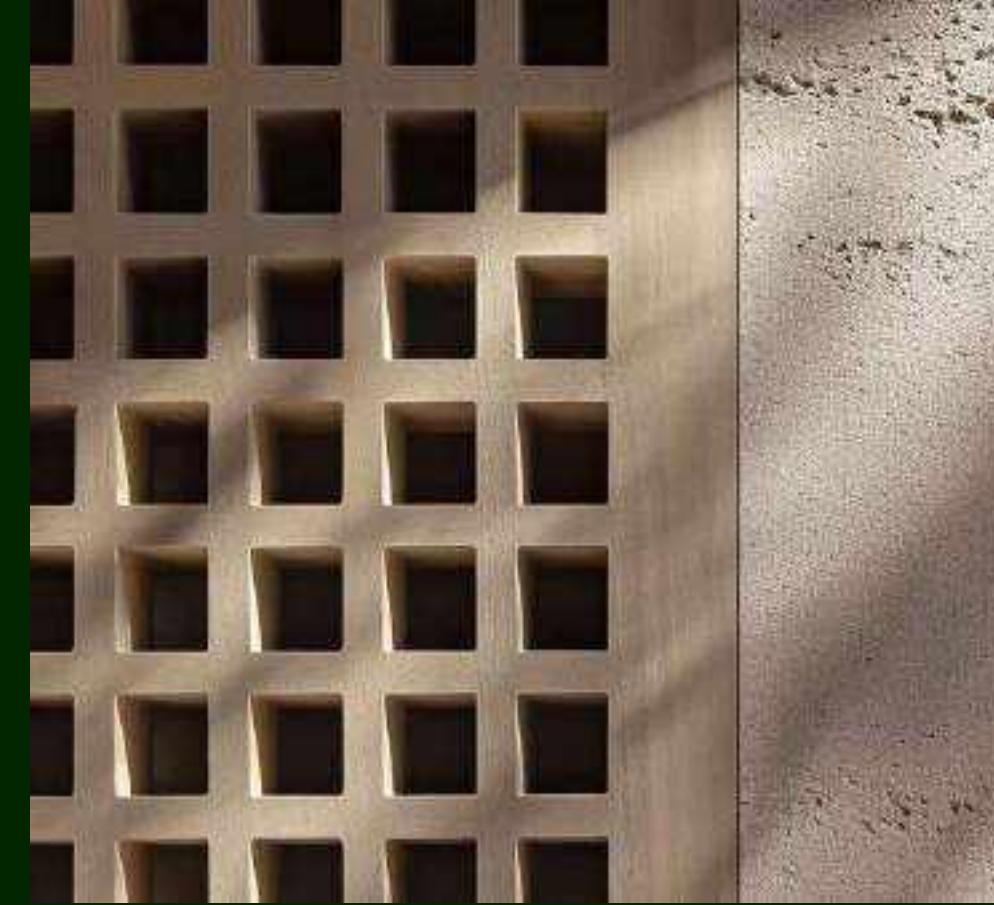
FOUR BEDROOM VILLAS

DISCLAIMER: All measurements, dimensions, coordinates and drawings, given as the Floor Plans in the literature are approximate and provided only for the purpose of marketing, illustration, information and general guidance as such drawings are not to scale. All the rooms, sizes, locations, orientations, dimensions, fixtures, fittings, finishes and specifications (including materials for, placement, size of rooms, windows, doors, balcony, furniture's inbuilt wardrobe etc.) provided in the floor plans may vary as the same have been taken from concept designs prior the actual development/construction and therefore their accuracy in relation to actual construction cannot be confirmed. Hence, we make no guarantee, warranty or representation as to the accuracy and completeness of the floor plan information as changes may be made during the development process, without notice. Always refer to latest IFC design available in the sales office for the most accurate representation of all construction details.



KEY PLAN



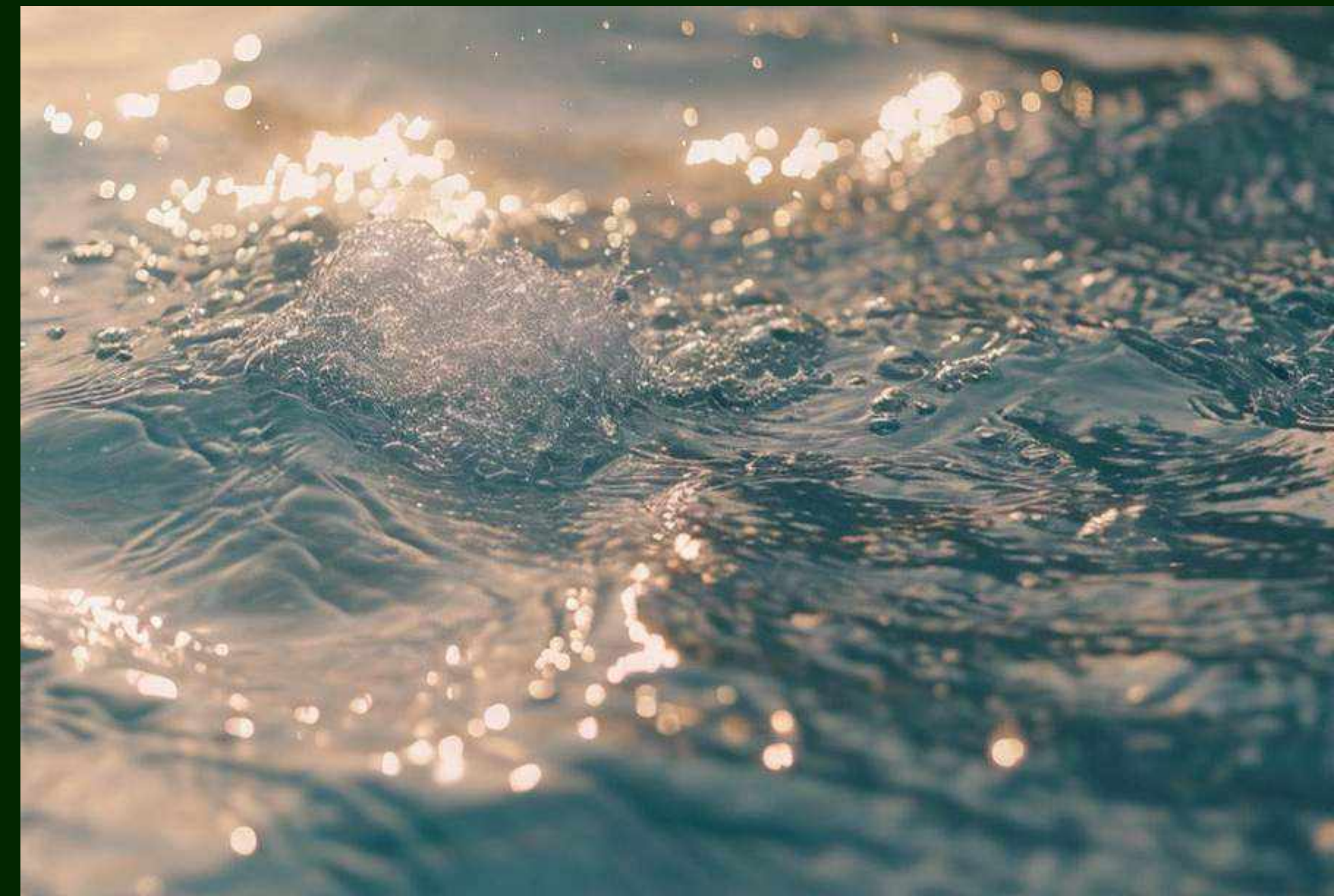


# 5

## FIVE BEDROOM VILLAS

Be greeted by an atmosphere where grandeur meets minimalistic elegance, an interplay of form and structure with bold, cantilevered terraces and smooth geometric outlines.

A striking poolside façade provides a canvas where sunlight and shadow paint an ever-changing picture throughout the day, highlighting the textural contrasts and creating a living artwork. These 5 bedroom villas will indulge your senses every day.



# WADI VILLAS

By ARISTA PROPERTIES  
DISTRICT 11 MEYDAN



FIVE BEDROOM VILLAS



# WADI VILLAS

By ARISTA PROPERTIES  
DISTRICT 11 MEYDAN

FIVE BEDROOM VILLAS



# WADI VILLAS

BY ARISTA PROPERTIES  
DISTRICT 11 MEYDAN



FIVE BEDROOM VILLAS





WADI

VILLAS

BY ARISTA PROPERTIES  
DISTRICT 11 MEYDAN



# WADI VILLAS

BY ARISTA PROPERTIES  
DISTRICT 11 MEYDAN

FIVE BEDROOM VILLAS





# WADI VILLAS

BY ARISTA PROPERTIES  
DISTRICT 11 MEYDAN



FIVE BEDROOM VILLAS



# 5 Bedroom Villa

## GROUND FLOOR

TOTAL AREA

**4,055** SQ.FT

APPROX



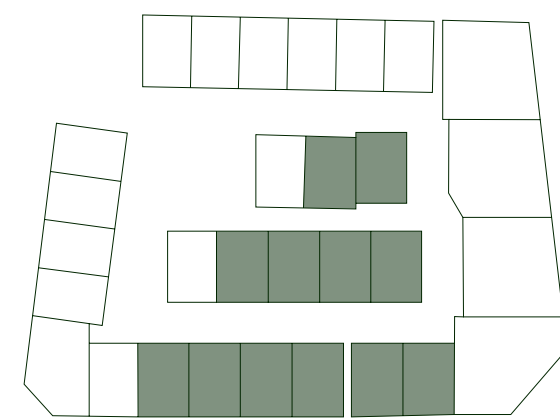
TOTAL BUILT UP AREA

**8,020** SQ.FT

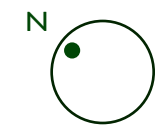
APPROX

FIVE BEDROOM VILLAS

DISCLAIMER: All measurements, dimensions, coordinates and drawings, given as the Floor Plans in the literature are approximate and provided only for the purpose of marketing, illustration, information and general guidance as such drawings are not to scale. All the rooms, sizes, locations, orientations, dimensions, fixtures, fittings, finishes and specifications (including materials for, placement, size of rooms, windows, doors, balcony, furniture's inbuilt wardrobe etc.) provided in the floor plans may vary as the same have been taken from concept designs prior the actual development/construction and therefore their accuracy in relation to actual construction cannot be confirmed. Hence, we make no guarantee, warranty or representation as to the accuracy and completeness of the floor plan information as changes may be made during the development process, without notice. Always refer to latest IFC design available in the sales office for the most accurate representation of all construction details.



KEY PLAN



# 5 Bedroom Villa

## FIRST FLOOR

TOTAL AREA

**2,280** SQ.FT

APPROX

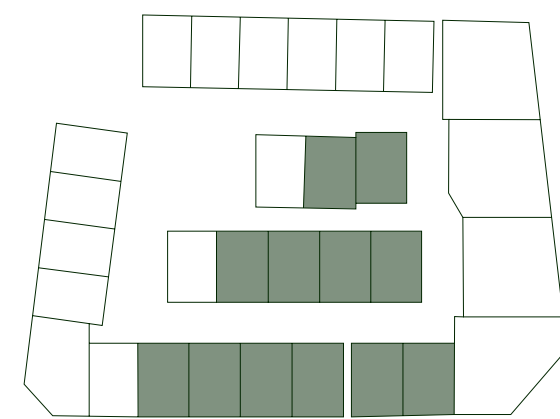


TOTAL BUILT UP AREA

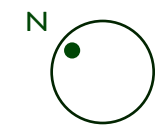
**8,020** SQ.FT

APPROX

DISCLAIMER: All measurements, dimensions, coordinates and drawings, given as the Floor Plans in the literature are approximate and provided only for the purpose of marketing, illustration, information and general guidance as such drawings are not to scale. All the rooms, sizes, locations, orientations, dimensions, fixtures, fittings, finishes and specifications (including materials for, placement, size of rooms, windows, doors, balcony, furniture's inbuilt wardrobe etc.) provided in the floor plans may vary as the same have been taken from concept designs prior the actual development/construction and therefore their accuracy in relation to actual construction cannot be confirmed. Hence, we make no guarantee, warranty or representation as to the accuracy and completeness of the floor plan information as changes may be made during the development process, without notice. Always refer to latest IFC design available in the sales office for the most accurate representation of all construction details.



KEY PLAN



# 5 Bedroom Villa

## SECOND FLOOR

TOTAL AREA

**1,685** SQ.FT

APPROX



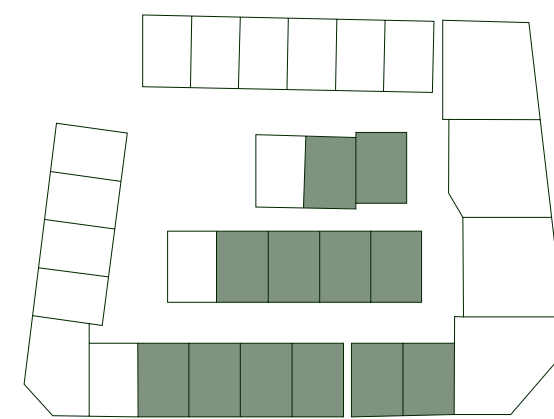
TOTAL BUILT UP AREA

**8,020** SQ.FT

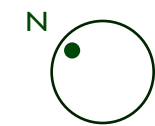
APPROX

FIVE BEDROOM VILLAS

DISCLAIMER: All measurements, dimensions, coordinates and drawings, given as the Floor Plans in the literature are approximate and provided only for the purpose of marketing, illustration, information and general guidance as such drawings are not to scale. All the rooms, sizes, locations, orientations, dimensions, fixtures, fittings, finishes and specifications (including materials for, placement, size of rooms, windows, doors, balcony, furniture's inbuilt wardrobe etc.) provided in the floor plans may vary as the same have been taken from concept designs prior the actual development/construction and therefore their accuracy in relation to actual construction cannot be confirmed. Hence, we make no guarantee, warranty or representation as to the accuracy and completeness of the floor plan information as changes may be made during the development process, without notice. Always refer to latest IFC design available in the sales office for the most accurate representation of all construction details.



KEY PLAN





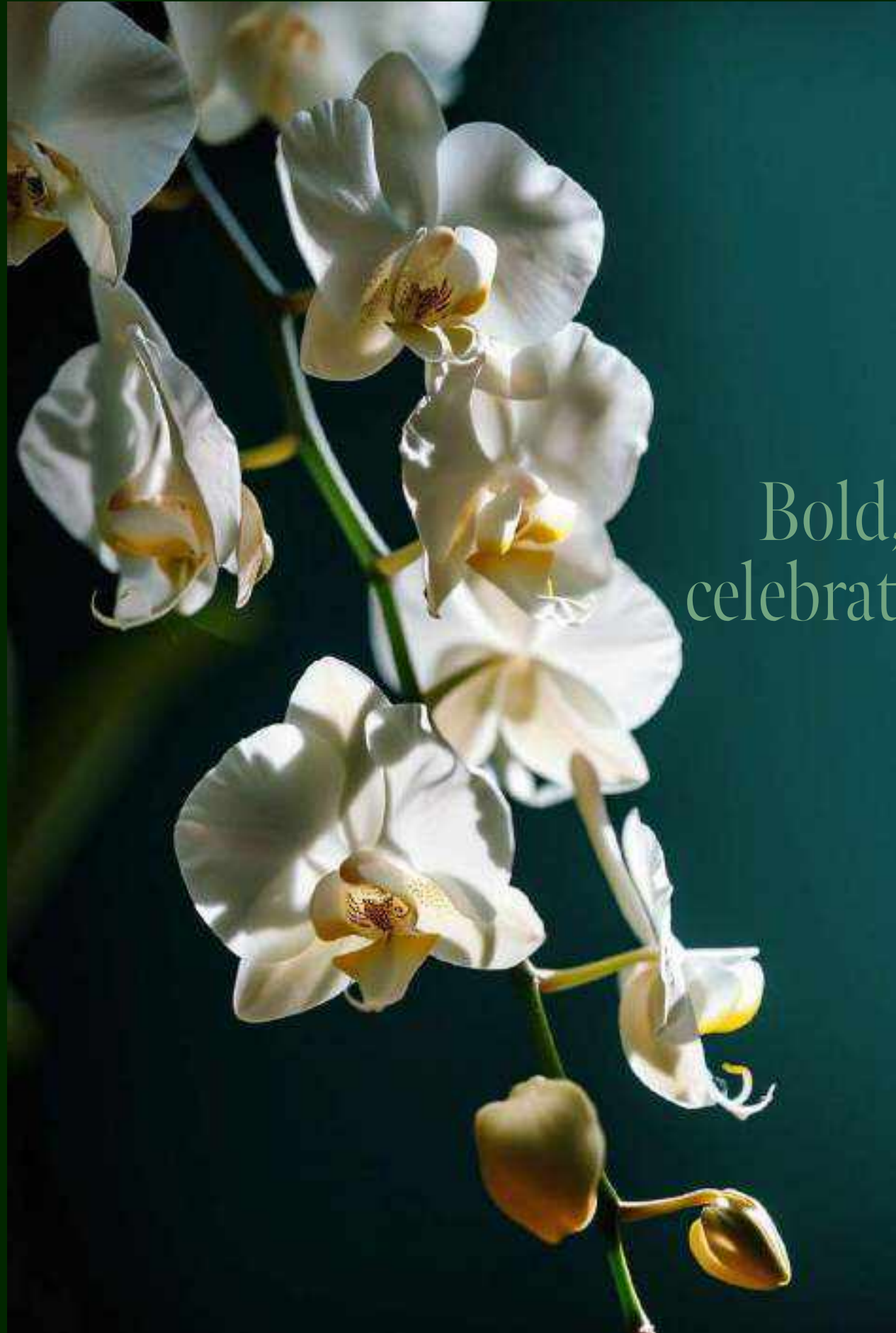
# 6

## SIX BEDROOM MANSIONS

Bold, gracious, exterior curves and designer water features celebrate the essence of luxury living where glass walls erase the boundaries between indoors and outdoors.

Sweeping lines and curved facades echo the natural contours of the landscape, creating a sense of movement and fluidity.

This elegance, elevated by the superior quality of exterior materials and craftsmanship, emphasises the grandeur of 3 levels of extravagant living. At night, the mansion comes alive with strategic lighting that underscores its architectural beauty.





# WADI VILLAS

BY ARISTA PROPERTIES  
DISTRICT 11 MEYDAN

SIX BEDROOM MANSIONS



WADI

VILLAS

BY ARISTA PROPERTIES  
DISTRICT 11 MEYDAN

COLOURS REFLECT UNDERSTATED  
GLAMOUR

Brilliant whites outlined  
by a gleaming metallic  
trim exude the simplicity  
of dignified taste.

Enter into a world where opulent living is redefined through curated details and a whisper of glamour in the golden accents that catch the light. An alluring exterior design sets the scene for style to flow inside through a graceful harmony of indoor-outdoor flow.



WADI  
VILLAS  
By ARISTA PROPERTIES  
DISTRICT 11 MEYDAN



SIX BEDROOM MANSIONS



WADI  
VILLAS

BY ARISTA PROPERTIES  
DISTRICT 11 MEYDAN

SIX BEDROOM MANSIONS

PERFECTION LIES IN THE DETAILS

Unerring attention to detail is testament to the level of craftsmanship and design in creating an experience of rare beauty.

The quintessence of water and the natural oasis are woven into the living space to craft an ambiance of exceptional allure. Interior finishings are characterised by a blend of natural stones and sophisticated design elements, an understated elegance that merges the interior spaces with the open greens.



# WADI VILLAS

BY ARISTA PROPERTIES  
DISTRICT 11 MEYDAN



SIX BEDROOM MANSIONS





Living areas are a testament to modern sophistication creating a tactile experience for intimate gatherings and coveted relaxed living.

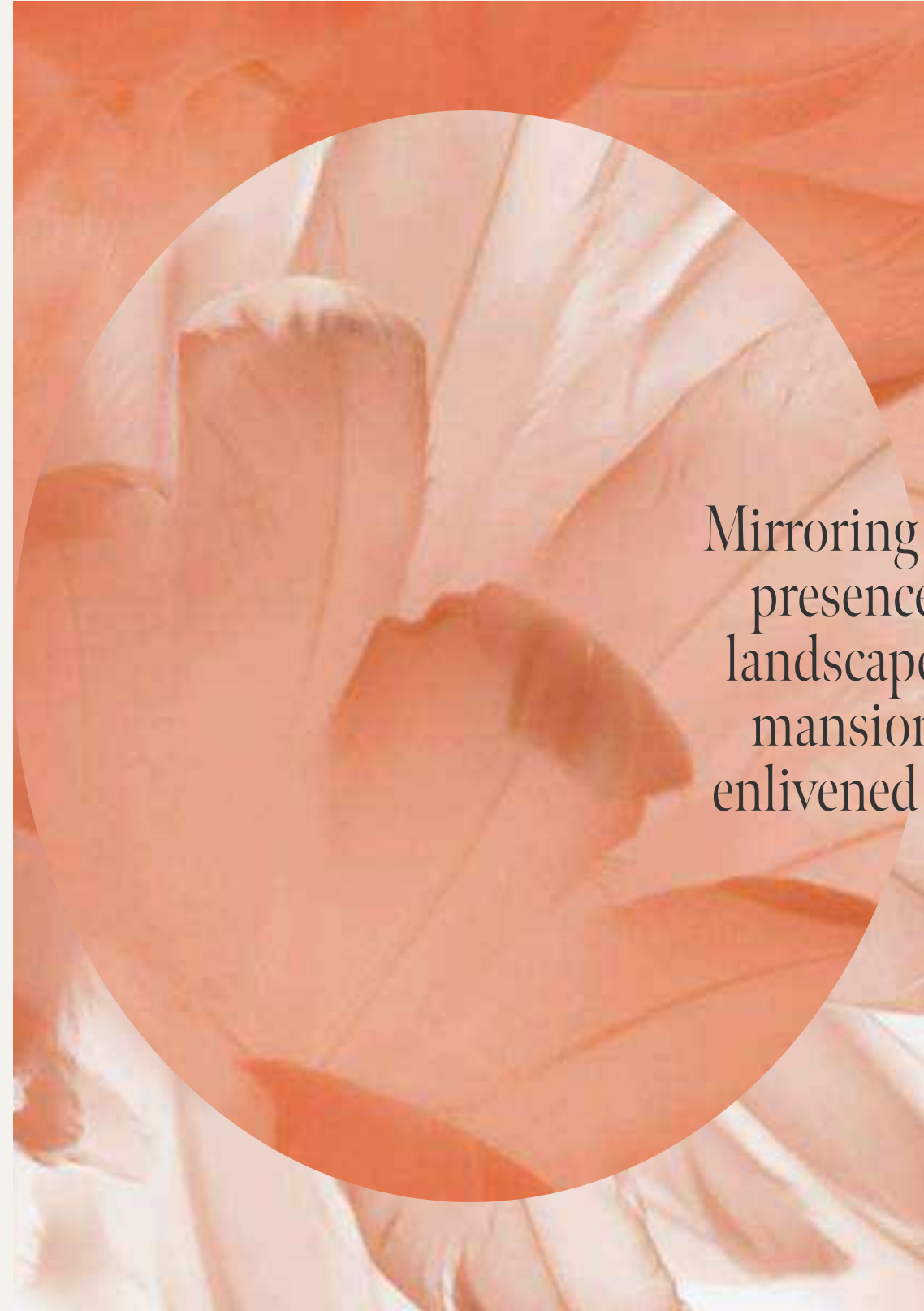
EXEMPLARY SPACES BLENDING  
THE BOUNDARIES BETWEEN NATURE  
AND DESIGN

Featuring a coveted 'glassed' lounge with three walls of windows providing both a sense of space and openness with the outdoors and a protected embrace. The epitome of opulent living where your senses will come alive and be refreshed by the integration of nature.

# WADI VILLAS

BY ARISTA PROPERTIES  
DISTRICT 11 MEYDAN





▼

Mirroring nature, where water's presence adds colour to the landscape and vegetation, the mansion's neutral palette is enlivened by touches of colour.

▲





# WADI VILLAS

BY ARISTA PROPERTIES  
DISTRICT 11 MEYDAN

SIX BEDROOM MANSIONS



## AN ENRICHING CONFLUENCE OF TEXTURES AND MATERIALS

Wooden elements bring warmth to cosy yet palatial rooms where the avant-garde lighting adds a touch of modernity. Throughout this extravagant mansion, space unfurls into indulgent comfort with materials selected for their prestigious quality and enriching textures.



# 6 Bedroom Mansion

## BASEMENT

TOTAL AREA  
**5,970** SQ.FT  
APPROX

TOTAL BUILT UP AREA  
**16,085** SQ.FT  
APPROX

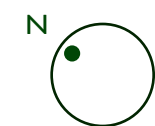
SIX BEDROOM MANSIONS



DISCLAIMER: All measurements, dimensions, coordinates and drawings, given as the Floor Plans in the literature are approximate and provided only for the purpose of marketing, illustration, information and general guidance as such drawings are not to scale. All the rooms, sizes, locations, orientations, dimensions, fixtures, fittings, finishes and specifications (including materials for, placement, size of rooms, windows, doors, balcony, furniture's inbuilt wardrobe etc.) provided in the floor plans may vary as the same have been taken from concept designs prior the actual development/construction and therefore their accuracy in relation to actual construction cannot be confirmed. Hence, we make no guarantee, warranty or representation as to the accuracy and completeness of the floor plan information as changes may be made during the development process, without notice. Always refer to latest IFC design available in the sales office for the most accurate representation of all construction details.



KEY PLAN



# 6 Bedroom Mansion

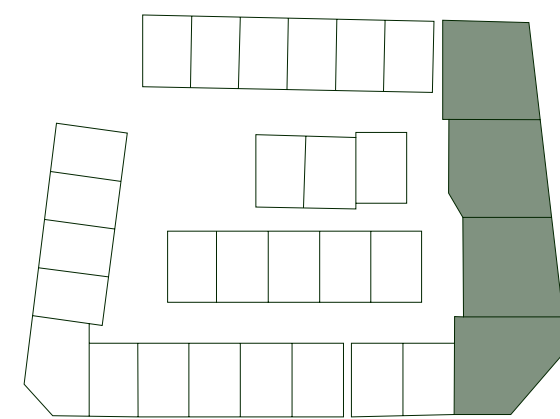
## GROUND FLOOR

TOTAL AREA  
**5,340** SQ.FT  
APPROX

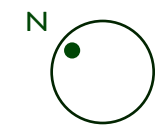
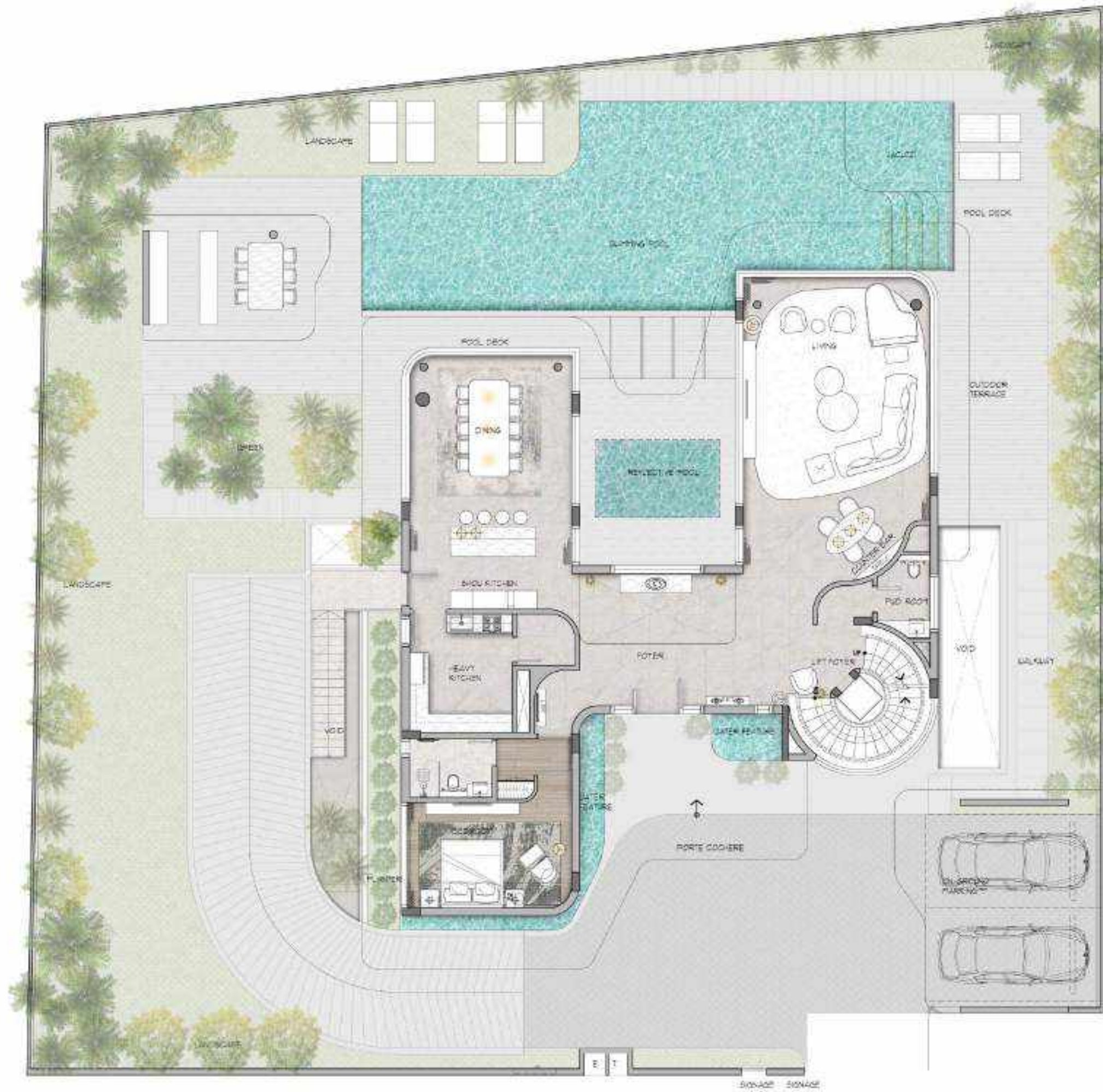
TOTAL BUILT UP AREA  
**16,085** SQ.FT  
APPROX

SIX BEDROOM MANSIONS

DISCLAIMER: All measurements, dimensions, coordinates and drawings, given as the Floor Plans in the literature are approximate and provided only for the purpose of marketing, illustration, information and general guidance as such drawings are not to scale. All the rooms, sizes, locations, orientations, dimensions, fixtures, fittings, finishes and specifications (including materials for, placement, size of rooms, windows, doors, balcony, furniture's inbuilt wardrobe etc.) provided in the floor plans may vary as the same have been taken from concept designs prior the actual development/construction and therefore their accuracy in relation to actual construction cannot be confirmed. Hence, we make no guarantee, warranty or representation as to the accuracy and completeness of the floor plan information as changes may be made during the development process, without notice. Always refer to latest IFC design available in the sales office for the most accurate representation of all construction details.



KEY PLAN



# 6 Bedroom Mansion

## FIRST FLOOR

TOTAL AREA

**2,845** SQ.FT

APPROX



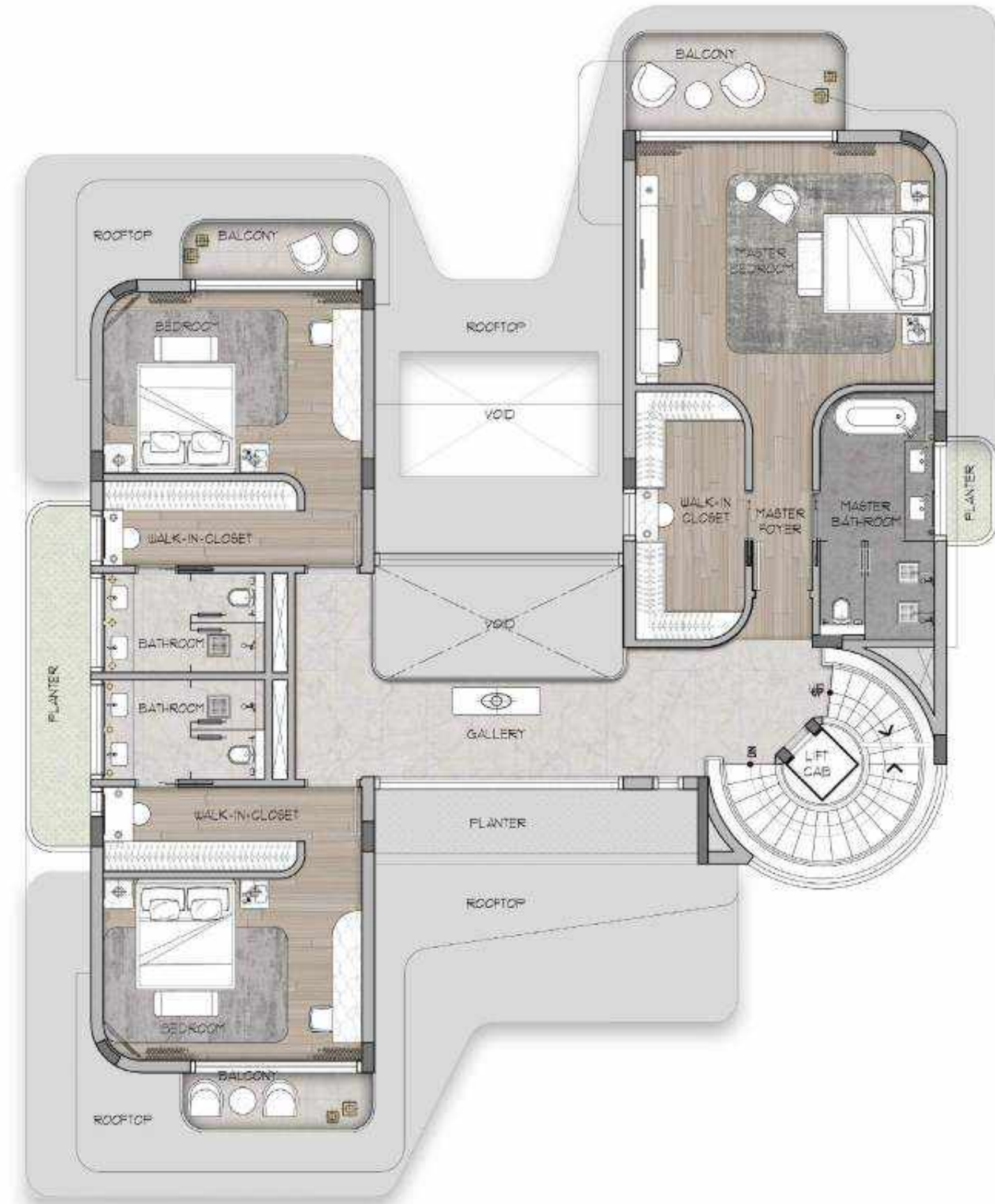
TOTAL BUILT UP AREA

**16,085** SQ.FT

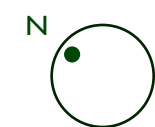
APPROX

SIX BEDROOM MANSIONS

DISCLAIMER: All measurements, dimensions, coordinates and drawings, given as the Floor Plans in the literature are approximate and provided only for the purpose of marketing, illustration, information and general guidance as such drawings are not to scale. All the rooms, sizes, locations, orientations, dimensions, fixtures, fittings, finishes and specifications (including materials for, placement, size of rooms, windows, doors, balcony, furniture's inbuilt wardrobe etc.) provided in the floor plans may vary as the same have been taken from concept designs prior the actual development/construction and therefore their accuracy in relation to actual construction cannot be confirmed. Hence, we make no guarantee, warranty or representation as to the accuracy and completeness of the floor plan information as changes may be made during the development process, without notice. Always refer to latest IFC design available in the sales office for the most accurate representation of all construction details.



KEY PLAN



# 6 Bedroom Mansion

## SECOND FLOOR

TOTAL AREA

**1,930** SQ.FT

APPROX



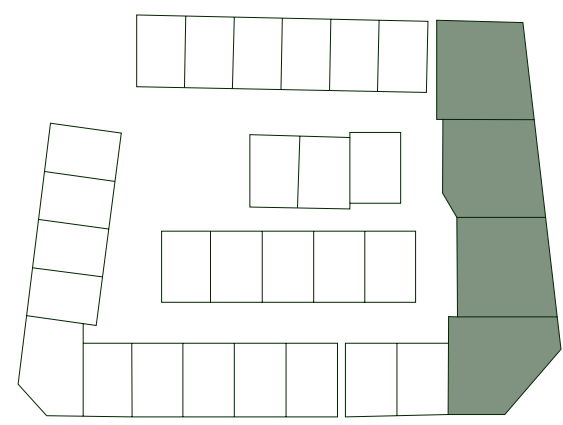
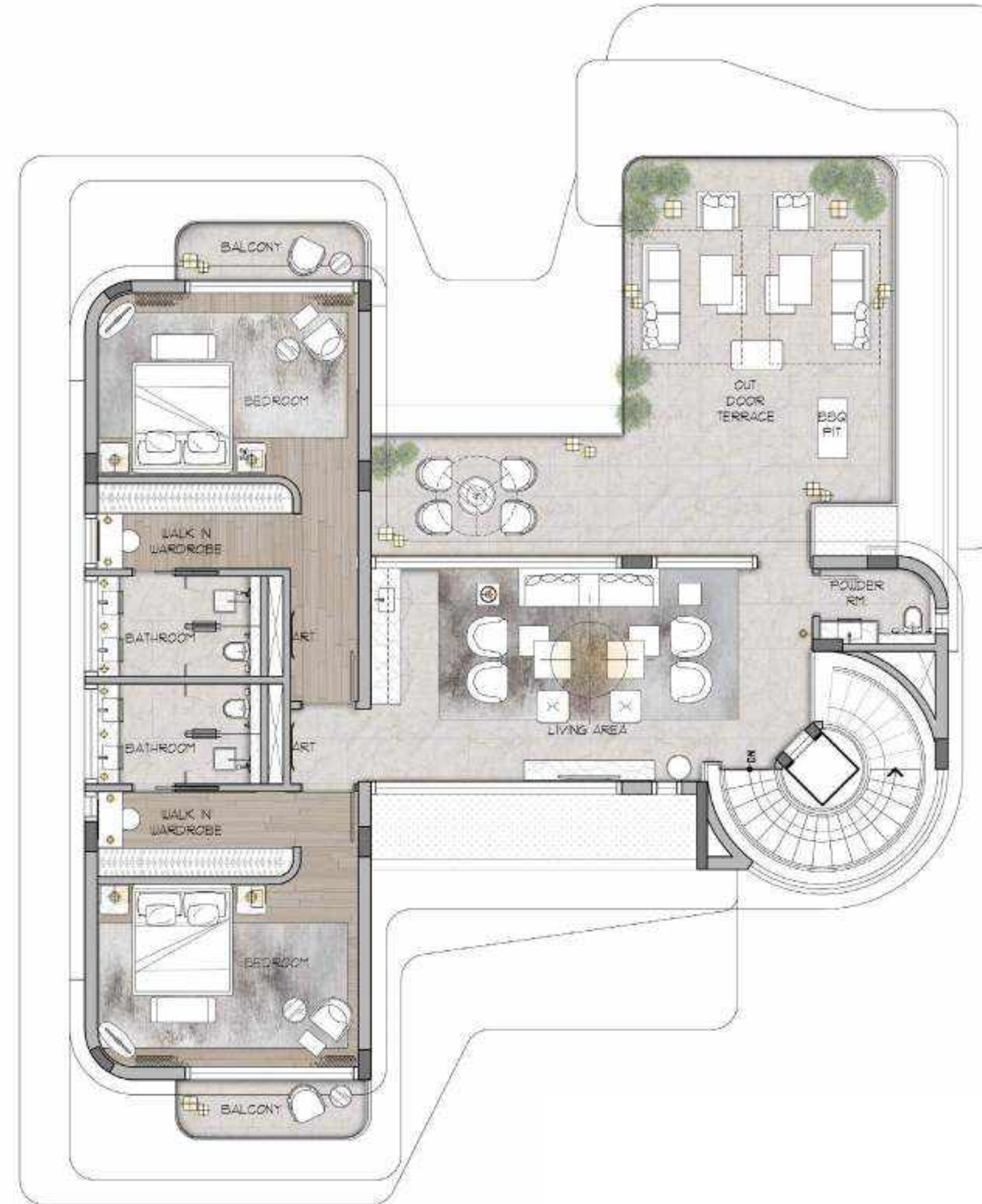
TOTAL BUILT UP AREA

**16,085** SQ.FT

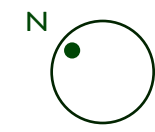
APPROX

SIX BEDROOM MANSIONS

DISCLAIMER: All measurements, dimensions, coordinates and drawings, given as the Floor Plans in the literature are approximate and provided only for the purpose of marketing, illustration, information and general guidance as such drawings are not to scale. All the rooms, sizes, locations, orientations, dimensions, fixtures, fittings, finishes and specifications (including materials for, placement, size of rooms, windows, doors, balcony, furniture's inbuilt wardrobe etc.) provided in the floor plans may vary as the same have been taken from concept designs prior the actual development/construction and therefore their accuracy in relation to actual construction cannot be confirmed. Hence, we make no guarantee, warranty or representation as to the accuracy and completeness of the floor plan information as changes may be made during the development process, without notice. Always refer to latest IFC design available in the sales office for the most accurate representation of all construction details.



KEY PLAN



RESIDENTIAL AMENITIES

Indulgent amenities to stimulate all your *senses*.



WADI  
VILLAS

BY ARISTA PROPERTIES  
DISTRICT 11 MEYDAN

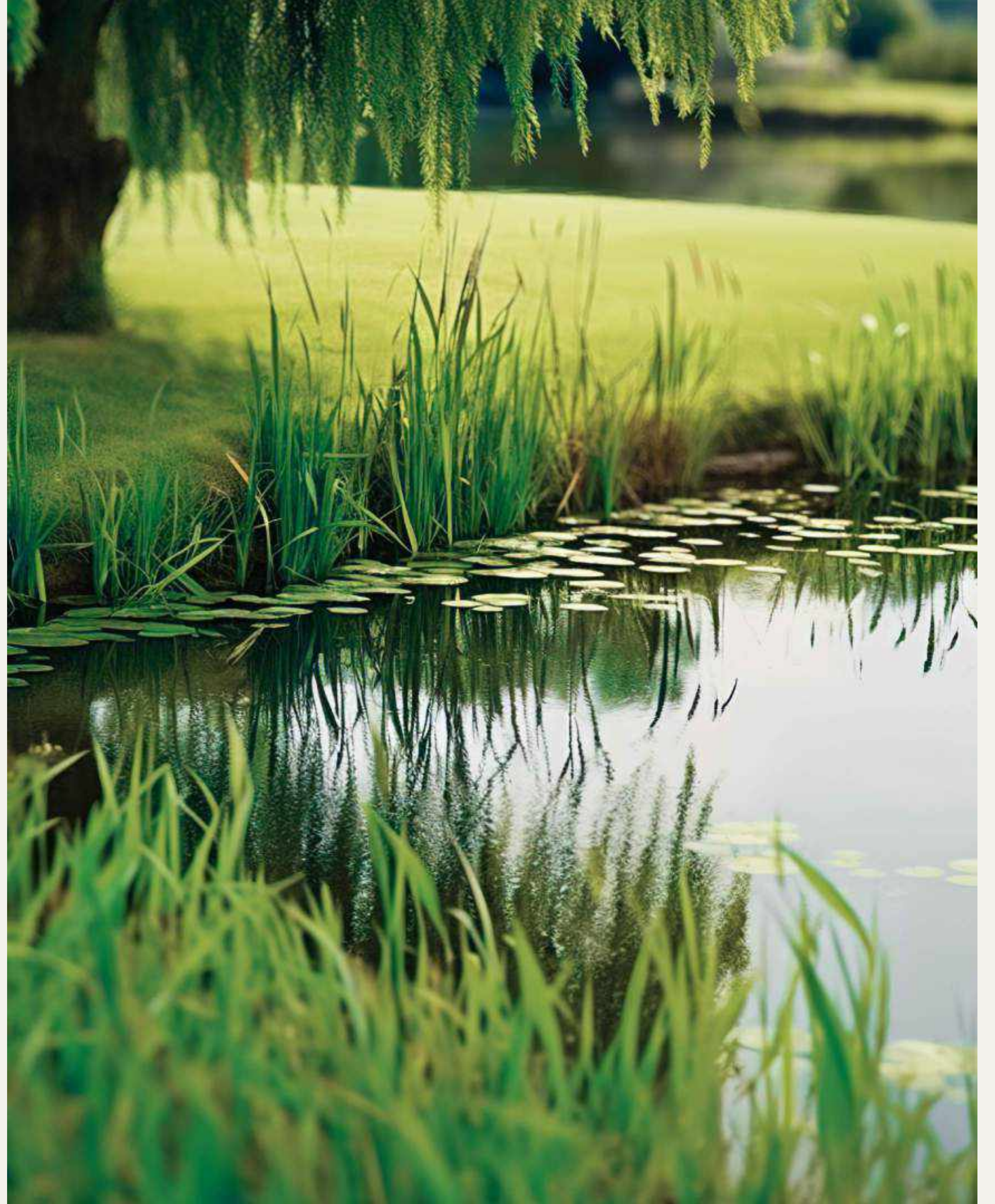


## EXCLUSIVE CLUBHOUSE

The centrepiece of the enclave is its exclusive clubhouse with its spectacular symmetrical design and inspiring double height entrance.

A distinctive hub providing residents with a perfect space for relaxation and socialising in style. Central to its design is a tranquil water feature set against wooden accents and stone floors, offering a serene communal space that connects the indoors with the lush exterior, symbolising the exclusive and refined lifestyle within.





WADI

VILLAS

by ARISTA PROPERTIES  
DISTRICT 11 MEYDAN

RESIDENTIAL AMENITIES

THE REJUVENATING ELIXIR OF WATER

The gem of the stylish clubhouse is a stunning infinity lap pool.

This 25-metre pool not only offers a stunning swimming experience but also serves as a visual masterpiece, seamlessly blending with the surrounding landscape and alluringly illuminated at night.

The pool area serves as the perfect spot after time spent either in the co-working lounge, the multi-purpose lounge, or the clubhouse café.



# WADI VILLAS

BY ARISTA PROPERTIES  
DISTRICT 11 MEYDAN

RESIDENTIAL AMENITIES



# WADI

VILLAS

BY ARISTA PROPERTIES  
DISTRICT 11 MEYDAN

RESIDENTIAL AMENITIES



Emphasising the oasis  
ambience, unique  
rainforest boardwalk  
offers an immersive  
nature experience for  
regenerative moments.

## FUN FOR THE ENTIRE FAMILY

The enclave is designed with families in mind, featuring a dedicated kids' play area and a game room. These spaces are safe and engaging, allowing children to play and socialise within the community.

# WADI VILLAS

BY ARISTA PROPERTIES  
DISTRICT 11 MEYDAN





AMENITIES THAT VALUE THE IMPORTANCE OF LIVING WELL

Designed to foster connections, it's a place where those who share a vision of luxury intertwined with nature come together.

A state-of-the-art fitness centre caters to the health and wellness of all residents. Equipped with modern exercise equipment and designed to house a variety of fitness routines, from intensive workouts to yoga and meditation, the convenience promotes a healthy lifestyle.



# WADI VILLAS

BY ARISTA PROPERTIES  
DISTRICT 11 MEYDAN

RESIDENTIAL AMENITIES



# WADI VILLAS

BY ARISTA PROPERTIES  
DISTRICT 11 MEYDAN



RESIDENTIAL AMENITIES







Project Design:  
HBA Architects is renowned for creating innovative and enduring design solutions that respect and embody community heritage.

 **HBA**architecture

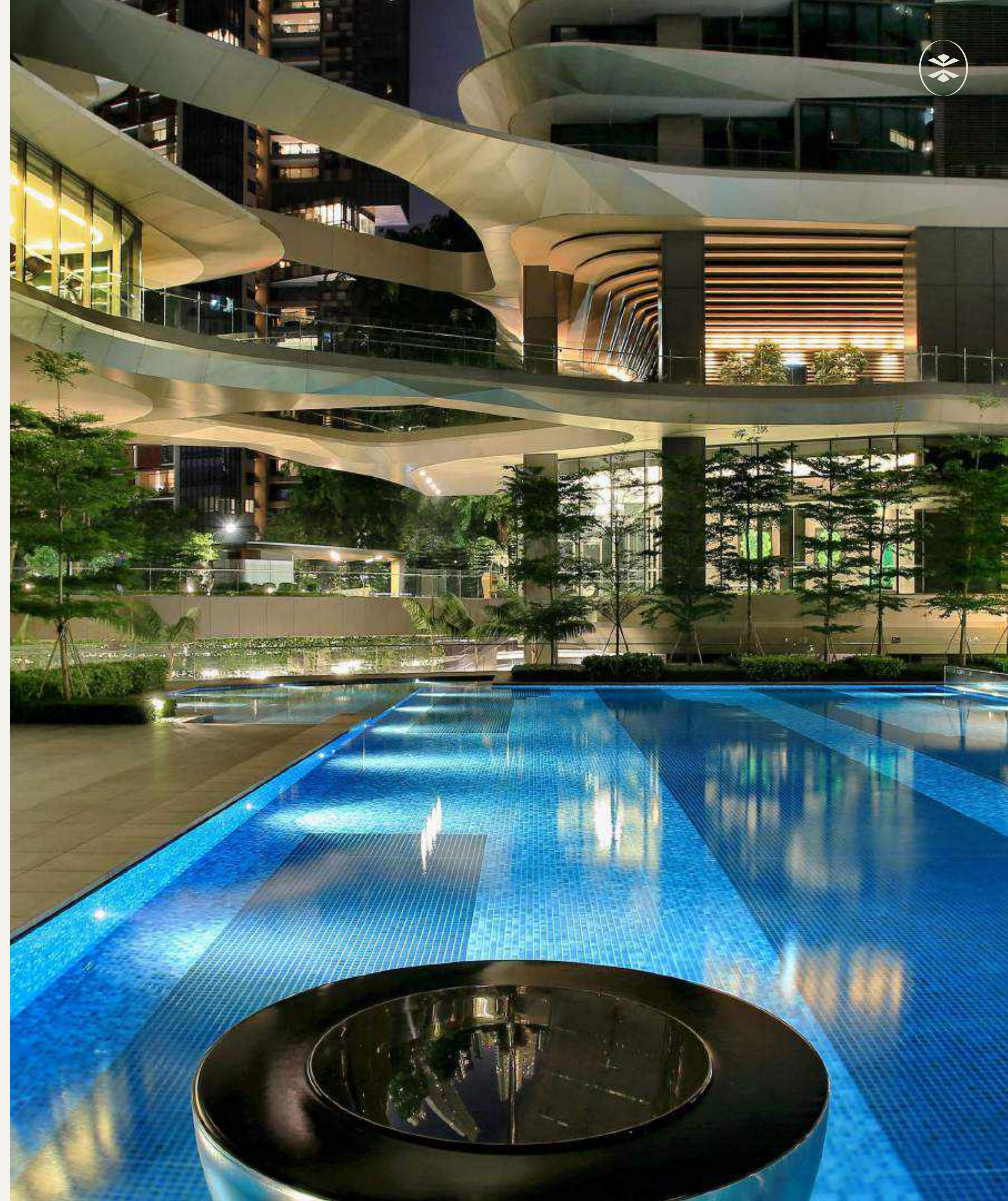
A diverse team of over 30 skilled architects, designers, and planners brings a wealth of expertise and local knowledge to each project. Selected for their ability to create inspirational architecture for landmark projects globally, HBA Architects specialises in meeting the unique needs of discerning clients in luxury markets, delivering designs that are exceptional and sustainably integrated into their surroundings.

Landscape Design:  
Artfully crafted by  
Coopers Hill who  
expertly help connect  
people to nature and  
nature to people.



COOPERS HILL

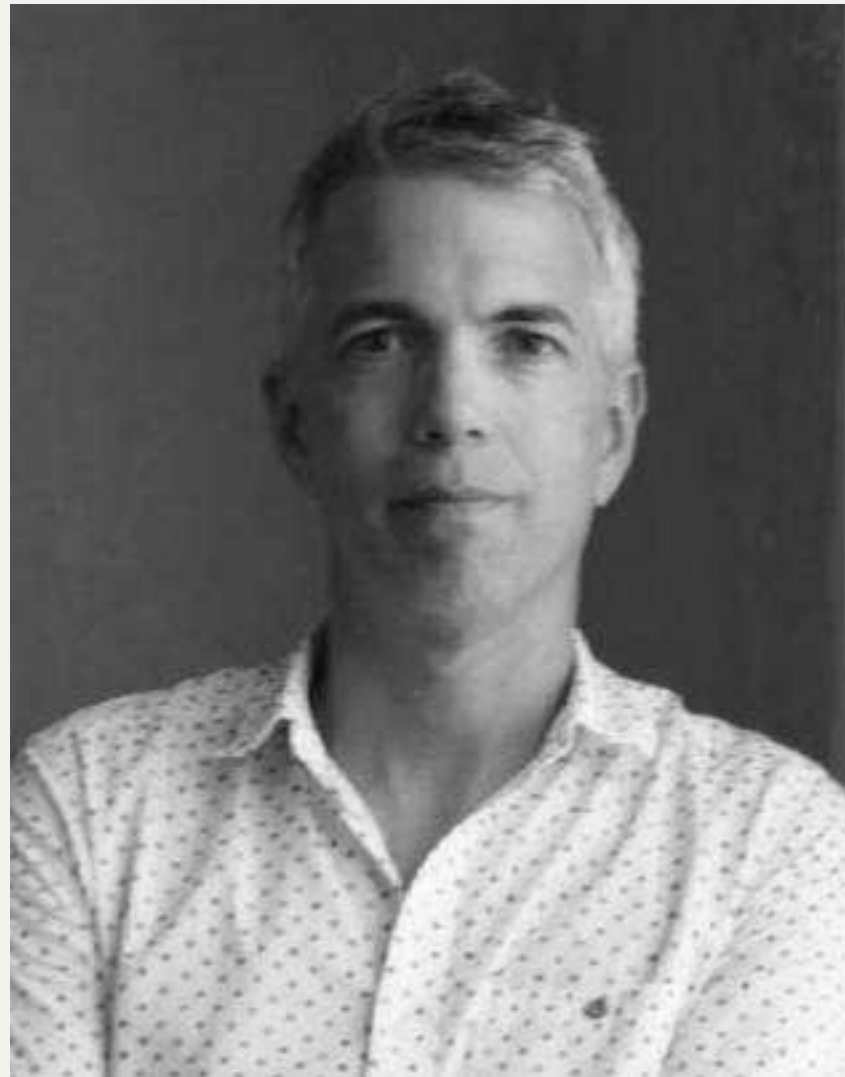
Coopers Hill, with over 40 years of experience in landscape design worldwide, is renowned for their culturally sensitive and responsible approach to harmonising the natural environment with human spaces. Their expertise lies in creating unique, award-winning designs with a focus on sustainable, timeless, and high-quality design that transcends fads and fashions, aligning the needs of mankind with the preservation of the natural world.





We have created an intimate neighbourhood oasis incorporating the theme of Water, this permeates the design of this *unique development*.

**ALEX THONISSEN**  
ASSOCIATE ARCHITECT  
HBA ARCHITECTURE



Evoked by the harmony of an oasis, we curated inviting spaces with soft lines, luxe textures, and earthy tones for a *sense of comfort*, accented by the gentle rhythm of water.

**ANDREW MOORE**  
PARTNER & PRESIDENT  
HBA MENA



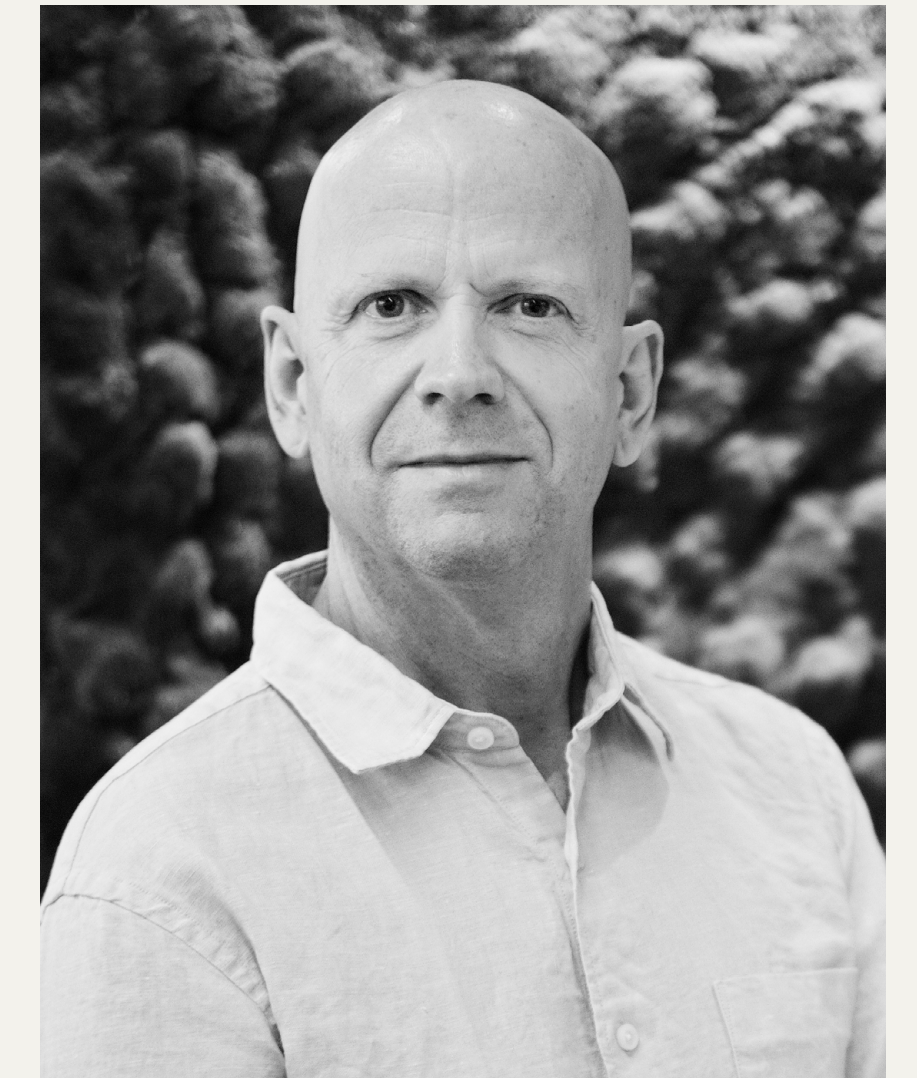
Upscale interiors designed with flow into *expansive living spaces* with streaming light, luxury details, and sophisticated palettes, blurring the lines between indoor and outdoor living.

**LESHA FERNANDO**  
ASSOCIATE  
HBA MENA



Inspired by nature, a stylized 'Wadi Landscape' of waterfalls, meandering streams, sculpted rock features and shady vegetation defines our landscape for the *'Residential Oasis'*.

**ALLEN KERTON**  
DESIGN PRINCIPAL & PARTNER  
COOPERS HILL





# WADI

VILLAS

BY ARISTA PROPERTIES  
DISTRICT 11 MEYDAN

A DEVELOPMENT BY:



# ARISTA

PROPERTIES



  
ARISTA  
PROPERTIES

 800 ARISTA

[WWW.ARISTAPROPERTIES.COM](http://WWW.ARISTAPROPERTIES.COM)